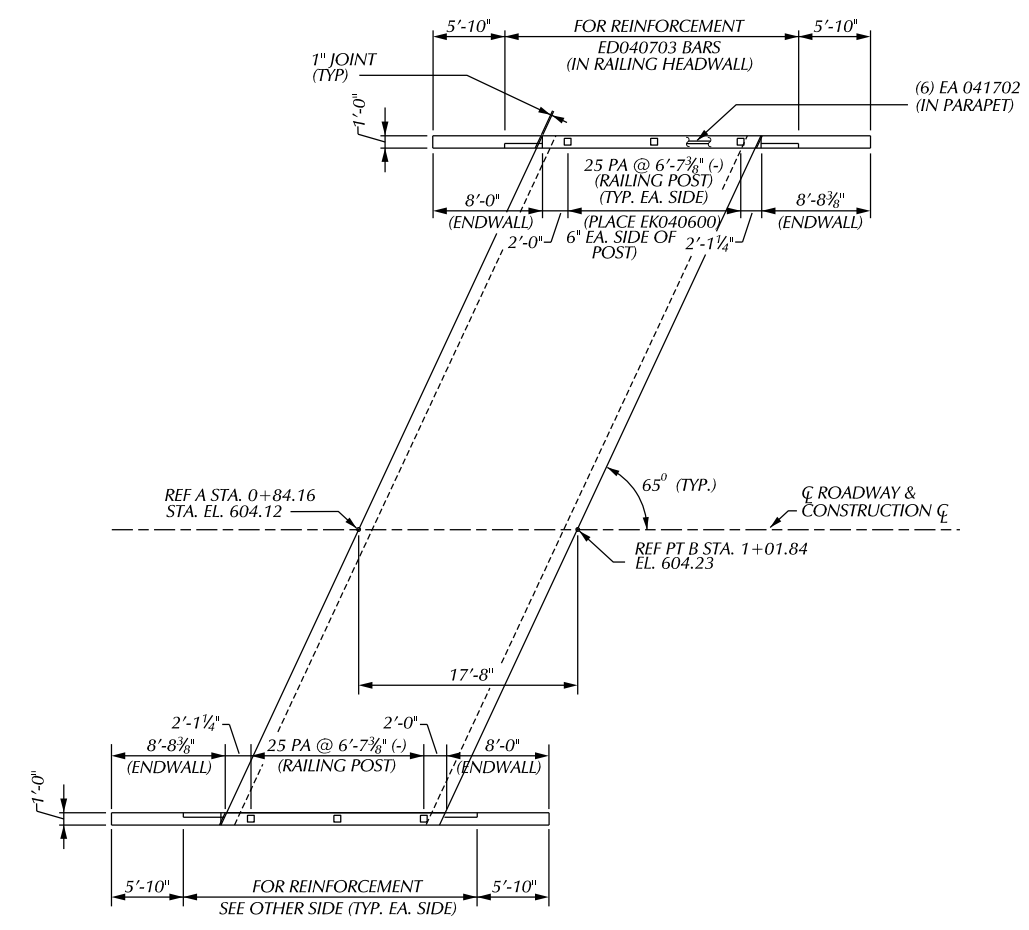
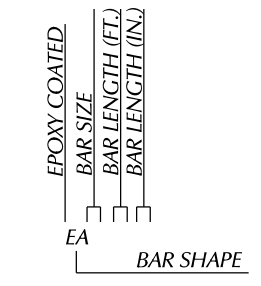
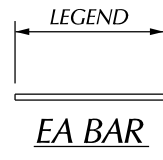
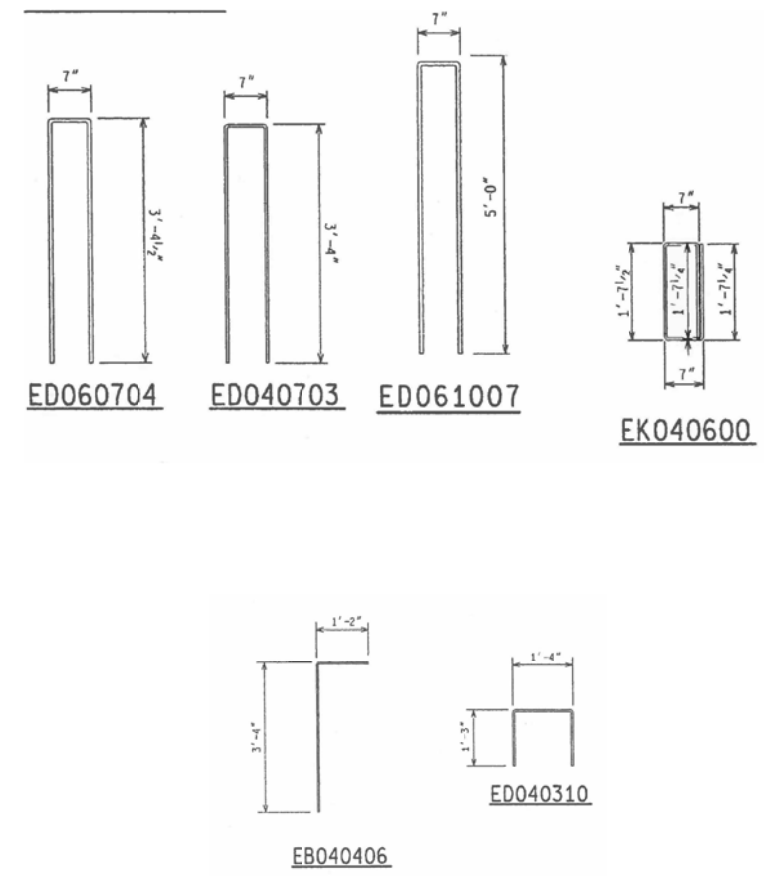


BENCH MARKS ELEV

MISCELLANEOUS QUANTITIES	
— FT	BRIDGE RAILING, AESTHETIC PARAPET TUB, MODIFIED
— CYD	SUBSTRUCTURE CONC.
— LS	SUBSTRUCTURE CONC. FORM FINISH AND CURE (C01 OF 63821)
— LB	REINFORCEMENT STEEL, EPOXY COATED
— FT	BENTONITE WATERSTOP



PLAN OF RAILING



EPOXY COATED STEEL REINFORCEMENT

BAR	NO. REQD	TOTAL WT

NOTES:

- FOR NAME PLATE LOCATION, SEE GENERAL PLAN OF STRUCTURE SHEETS.
- FOR BRIDGE RAILING, ANCHORAGE FOR GUARDRAIL AND NAME PLATE MOUNTING DETAILS, SEE STANDARD PLAN B-25 SERIES. FOR DETAILS OF NAME PLATES MOLDINGS AND BEVELS, SEE STANDARD PLAN B-103 SERIES.
- A RUBBED SURFACE FINISH ON THE VERTICAL AND TOP CONCRETE SURFACES OF THE PARAPET RAILING IS REQUIRED ON THIS STRUCTURE.
- LOW TEMPERATURE PROTECTION OF CONCRETE SHALL BE APPLIED ACCORDING TO SECTION 706.03J, OF THE STANDARD SPECIFICATIONS FOR CONSTRUCTION. LOW TEMPERATURE PROTECTION OF CONCRETE WILL NOT BE PAID FOR SEPARATELY, BUT WILL BE INCLUDED IN THE BID "SUPERSTRUCTURE CONC".
- THE LIGHT STANDARD ANCHOR BOLT ASSEMBLIES & POLES SHALL BE PROVIDED BY DETROIT EDISON AND INSTALLED BY THE CONTRACTOR. INSTALLATION IS INCLUDED IN PAYMENT FOR "BRIDGE RAILING, AESTHETIC PARAPET, TUBE, MODIFIED".
- THE UTILITY COMPANY SHALL BE NOTIFIED 10 WORKING DAYS IN ADVANCE FOR REMOVAL OF EXISTING LIGHT STANDARDS AND 10 WORKING DAYS IN ADVANCE OF THE TIME OF INSTALLATION OF THE PROPOSED DUCTS IN THE SIDEWALK.

DESCRIPTION	DR	CHK	APPY	DATE	BY	CHECKED BY	APPROVED:
PLAN							
GRADE							
ESTIMATE							
FINAL							

CITY OF DETROIT
CITY ENGINEERING DIVISION - D.P.W.
BUREAUS OF STREETS AND HIGHWAYS
FOR

WEST PARKWAY CULVERT OVER ASHCROFT - SHERWOOD DRAIN
CULVERT & RETAINING WALL RAILING DETAILS

SHEET	OF	SHEETS
CONTRACT NO.		
ASSIGNMENT NO.		
DATE		