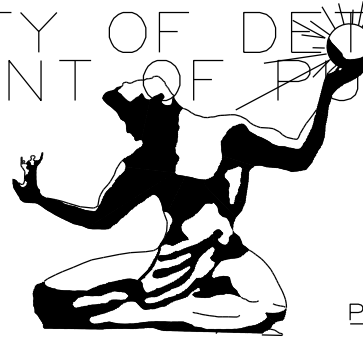


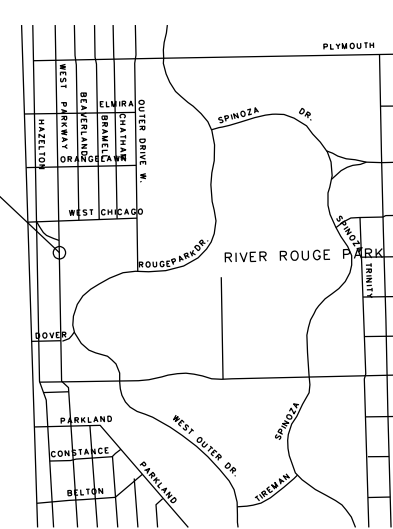
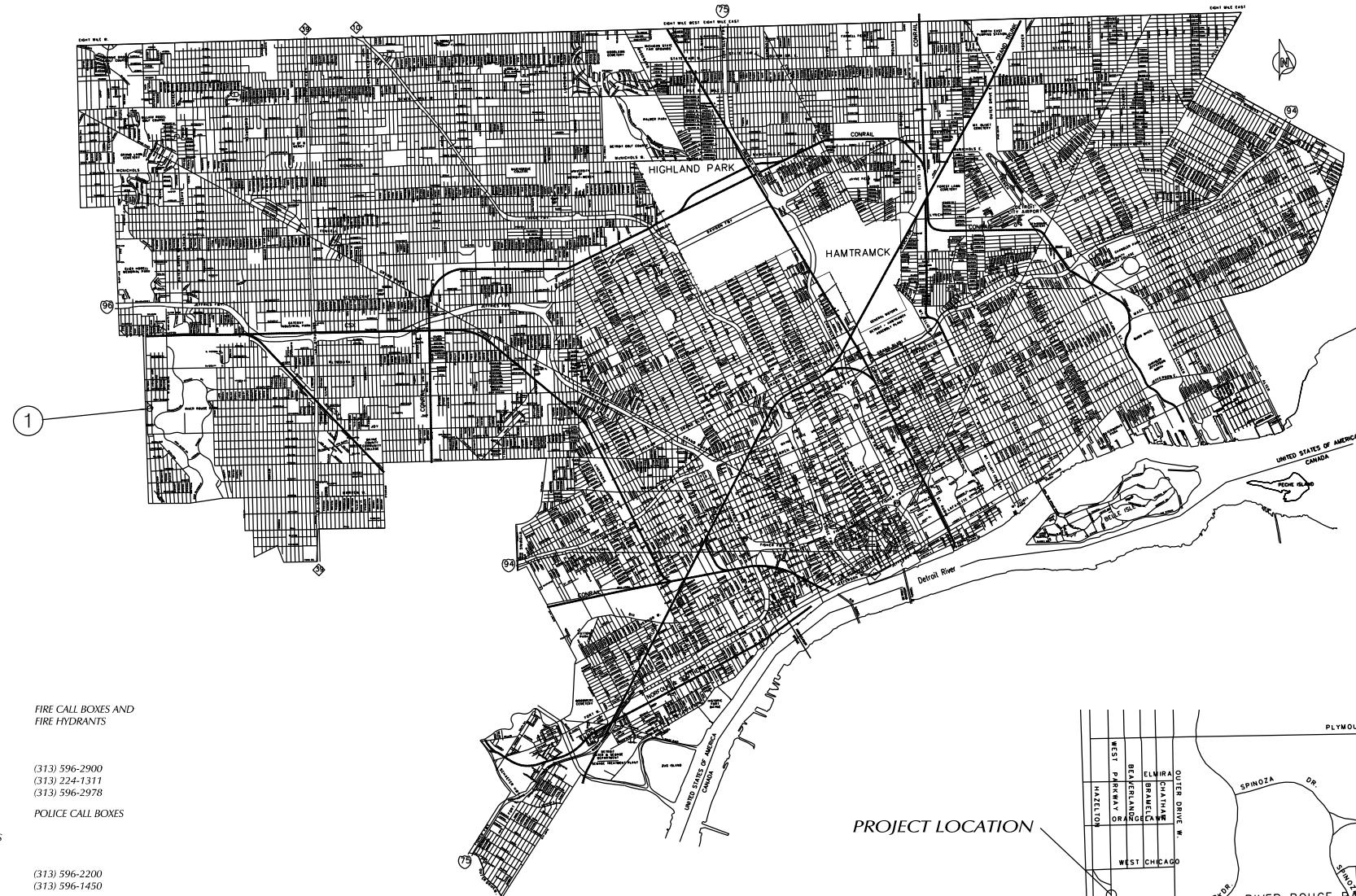
# CITY OF DETROIT DEPARTMENT OF PUBLIC WORKS



CONTROL SECTION  
XXX XXXXX

PROJECT JOB NO.  
PW-6987

## CULVERT REPLACEMENT PROJECT REPLACEMENT OF THE W. PARKWAY CULVERT OVER ROUGE RIVER



THE DESIGN OF THIS STRUCTURE IS BASED ON CURRENT AMERICAN ASSOCIATION OF THE STATE HIGHWAY AND TRANSPORTATION OFFICIALS, (AASHTO), FOR HIGHWAY BRIDGES HS 25 LOADING. LIVE LOAD PLUS IMPACT DEFLECTION DOES NOT EXCEED 1/800 OF THE SPAN LENGTH. THE LOAD FACTOR METHOD OF DESIGN WAS USED FOR THIS STRUCTURE.

EXCEPT WHERE OTHERWISE INDICATED ON THESE PLANS, THE PROPOSAL AND SUPPLEMENTAL SPECIFICATIONS CONTAINED HEREIN, ALL MATERIALS AND WORKMANSHIP SHALL BE ACCORDANCE WITH THE MICHIGAN DEPARTMENT OF TRANSPORTATION STANDARDS SPECIFICATIONS FOR CONSTRUCTION 2003 EDITION.

ALL EXPOSED CONCRETE CORNERS SHOWN SQUARE ON THE PLANS SHALL BE BELIEVE WITH 1/2" TRIANGULAR MOLDINGS EXCEPT AS OTHERWISE NOTED.

THE DESIGN OF THE STRUCTURAL MEMBERS IS BASED ON MATERIALS OF THE FOLLOWING GRADES AND STRESSES.

- CONCRETE: GRADE S2  $f'c = 3,000$  PSI
- CONCRETE: GRADE D  $f'c = 4,000$  PSI
- STEEL REINFORCEMENT:  $f_y = 60,000$  PSI
- PRESTRESSED CONCRETE:  $f'c = 5,000$  PSI

ALL DIMENSIONS ON THESE PLANS ARE IN INCHES EXCEPT AS NOTED.

### INDEX OF SHEETS

SHEET NO.	DESCRIPTION	# OF SHEET
1	TITLE SHEET	1
2		1
3		1
4		1
5		1
6		1

### STANDARD PLANS

WHERE THE FOLLOWING ITEMS ARE CALLED FOR ON THE PLANS THEY ARE TO BE CONSTRUCTED ACCORDING TO THE STANDARDS PLAN GIVEN BELOW OPPOSITE EACH ITEM UNLESS OTHERWISE INDICATED

### PUBLIC UTILITIES

<p>AT&amp;T METRO EAST 100 S MAIN ST, SUITE 314 MT CLEMENS, MI 487043-2374 JOE SIKOKI</p> <p>RIGHT OF WAY- METRO WEST 17631 MICHIGAN AVE., RM 301 DEARBORN, MI 48126 KEVIN LOGAN</p> <p>CELL FAX K129152att.com MARK BRANAM Mark.branam@att.com BRADLEY HALL Bradley.x.hall@att.com DEREK BULKLEY Derek.m.bulkley@att.com</p> <p>NOTE: AT&amp;T WILL REQUIRE FIVE TO SEVEN BUSINESS DAYS ADVANCE NOTICE PRIOR TO ADJUSTING FRAMES AND COVERS. CONTACT AT&amp;T AT (734) 523-6883.</p> <p>CITY OF DETROIT PUBLIC LIGHTING AUTHORITY OF DETROIT 65 CADILLAC SQUARE, SUITE 3100 DETROIT, MI 48226 PHONE WEBSITE: www.pladetroit.org</p> <p>CITY OF DETROIT DETROIT WATER &amp; SEWERAGE DEPARTMENT 6425 HUBER (CSF) A-219 DETROIT, MI 48211 DEBRA SINGLETON dsingleton@dvsd.org EMERGENCY 24 HOUR SERVICE</p>	<p>TELEPHONE (586) 466-6310</p> <p>(313) 240-5482 (734) 223-5645 (313) 982-1029</p> <p>(313) 240-5390 (313) 466-1049</p> <p>(313) 240-5480</p> <p>(313) 324-8290</p> <p>(313) 267-8309 (313) 267-7401</p>	<p>CITY OF DETROIT DETROIT FIRE DEPARTMENT FIRE MARSHAL'S DIVISION 1301 THIRD STREET DETROIT, MI 48226 PHONE CHIEF OTIS B. HOLT FAX</p> <p>CITY OF DETROIT, DETROIT POLICE DEPARTMENT DETROIT PUBLIC SAFETY HEADQUARTERS 1301 THIRD STREET DETROIT, MI 48226 PHONE FAX</p> <p>CITY OF DETROIT TRAFFIC ENGINEERING, D.P.W. 2633 MICHIGAN AVENUE DETROIT, MI 48207 ASHOK PATEL FAX AshPat@detroitmi.gov JUBI CHACKUNKAL Jubi.Cha@detroitmi.gov KIRIT PATEL Patelki@detroitmi.gov</p> <p>SIGN SHOP 2425 FENKELL DETROIT, MI 48238 SIGN SHOP MANAGE FAX</p> <p>COMCAST CABLEVISION 12775 LYNDON DETROIT, MI 48227 BENE CUMMINGS FAX</p>	<p>FIRE CALL BOXES AND FIRE HYDRANTS (313) 596-2900 (313) 224-1311 (313) 596-2978</p> <p>POLICE CALL BOXES (313) 596-2200 (313) 596-1450</p> <p>PAVEMENT MARKINGS, SIGNS &amp; TRAFFIC SIGNALS (313) 224-1610 (313) 224-1304</p> <p>(313) 224-1315 (313) 407-4124 (313) 628-5641</p> <p>SIGNS REMOVALS &amp; INSTALLATIONS (313) 628-2923 (313) 628-4966</p> <p>TV CABLES (313) 934-2600 (313) 934-4824</p>	<p>DTE, GAS COMPANY ONE ENERGY PLAZA-WCB1722 DETROIT, MI 48226 DAVE ORZEL orzeld@dteenergy.com</p> <p>DTE, ELECTRIC COMPANY ONE ENERGY PLAZA ICS GROUP, 5188B DETROIT, MI 48226 ROBIN O'CONNELL FAX</p> <p>DTE, ENERGY/MICHIGAN GAS DATA INTEGRITY GAS ONE ENERGY PLAZA-WCB1836 DETROIT, MI 48226 BARBARA SAUNDERS CELL EXPOSED OR DAMAGED FACILITIES</p>	<p>HIGH PRESSURE GAS TRANSMISSION (313) 235-1135</p> <p>ELECTRIC POWER (313) 235-5632 (313) 235-9366 (313) 237-9564</p> <p>GAS MAINS (313) 235-5111 (313) 920-4488 (800) 477-4747</p>	<p>NOTE: CONTACT DTE TEN (10) WORKING DAYS PRIOR TO THE CONSTRUCTION START DATE TO COORDINATE ADJUSTMENTS FOR DETROIT EDISON MANHOLES.</p> <p>DETROIT THERMAL LLC 541 MADISON DETROIT, MI 48226 TOM MONRO FAX</p> <p>ITC HOLDINGS CORP. 27175 ENERGY WAY NOVI, MI 48377 BRIANNA KOTELES bkoteles@icttransco.com</p> <p>MISS DIG CALL THREE (3) WORKING DAYS BEFORE YOU DIG (800) 482-7171 OR 811</p> <p>WAYNE COUNTY TRAFFIC OFFICE 29900 GODDARD RD. DETROIT, MI 48242 PHONE (734) 955-2154</p>	<p>STEAM LINES (313) 921-1922 (313) 921-1972</p> <p>ELECTRICITY TRANSMISSION COMPANY (248) 946-3322</p> <p>ALL UNDERGROUND UTILITIES</p>
--	---	---	---	---	---	--	--



DESIGNED BY LA		Date: 12/04/2017
Drawn WLW	Checked By: ---	Approved By: ---
Job No: PW-6987		
CONTRACT FOR: <b>REPLACEMENT OF THE W. PARKWAY CULVERT OVER ROUGE RIVER</b>		
LOCAL AUTHORITY APPROVAL CITY OF DETROIT DEPARTMENT OF PUBLIC WORKS CITY ENGINEERING DIVISION		
APPROVED BY: _____ DATE: _____		
PREPARED UNDER THE SUPERVISION OF		
_____ REGISTERED PROFESSIONAL ENGINEER		_____ REGISTRATION NO.
CITY OF DETROIT ORGANIZATION		
CITY ENGINEERING DIVISION, D.P.W. 2 WOODWARD AVE., SUITE 601 DETROIT MI 48216 ADDRESS		
SHEET ___ OF ___		

CONTROL SECTION NO.: XXX XXXXX  
JOB NO.: PW-6987

**BENCHMARKS**

BM#1 ELEV = 616.82  
CHISEL MARK 26.4 FEET  
RIGHT OF STA 4+81

BM#2 ELEV = 605.44  
CHISEL MARK SW COR.  
W. PARKWAY & MEADOWPARK

**WITNESSES**

WITNESSES TO CP#2 EAST - W. PARKWAY, NORTH HAZELTON  
55' FRONT LIGHTPOLE NORTH

CP#86 SW COR. W. PARKWAY & MEADOWPARK  
5' N. FIRE HYDRANT  
7' W. CURB LINE  
30' S. SOUTH CURB LINE OF MEADOWPARK

**REF PT COORDINATES**

REF PT A X=5000.00  
Y=5092.93

REF PT B X=5040.57  
Y=4555.99

**NOTES:**

THE WORK COVERED BY THESE PLANS INCLUDED REMOVAL OF THE EXISTING METAL CORRUGATED STEEL CULVERT, CONSTRUCTION OF THE PROPOSED CULVERT & RETAINING WALL AND PLACING RIPRAP TO THE LIMITS SHOWN, ALL OTHER WORK IS INCLUDED IN THE ROAD PLANS THAT ARE PART OF THE PACKAGE.

THE STATIONING SHOWN IS UNIQUE TO THIS PROJECT AND CANNOT BE RELATED TO ANY OTHER EXISTING STATIONING.

W. PARKWAY TRAFFIC IS TO BE DETOURED OVER OTHER EXISTING ROADS.

THE CONTRACTOR SHALL LOCATE ALL ACTIVE UNDERGROUND UTILITIES PRIOR TO STARTING WORK AND SHALL CONDUCT HIS OPERATIONS IN SUCH A MANNER AS TO ENSURE THAT THOSE UTILITIES NOT REQUIRING RELOCATION WILL NOT BE DISTURBED.

WATER LEVEL IS SUBJECT TO CHANGE. THE CONTRACTOR IS RESPONSIBLE FOR MAKING A DETERMINATION OF WATER LEVELS THAT MAY EXIST DURING CONSTRUCTION.

MEASURES SHALL BE TAKEN TO PREVENT DEBRIS FROM FALLING FROM THE STRUCTURES, IF DEBRIS FALLS INTO THE THE WATERWAY, IT SHALL BE REMOVED WITHIN 24 HOURS. SINCE DISTURBANCE OF THE WATERWAY BOTTOM MAY BE AS HARMFUL AS THE DEBRIS ITSELF, THE PREVENTIVE MEASURES MUST BE EFFECTIVE.

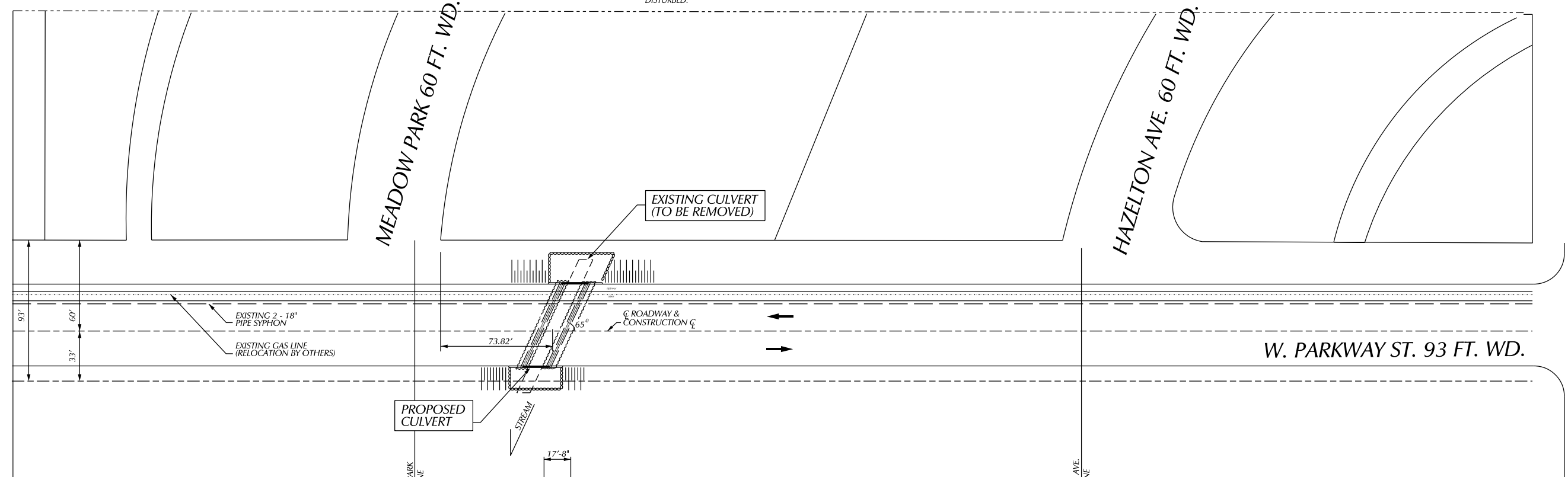
IMMEDIATELY AFTER THE CONSTRUCTION OF A CULVERT SLOPE IS COMPLETED, SLOPE PROTECTION AND SEEDING OR SODDING SHALL BE PLACED ON THE ADJACENT EMBANKMENT SLOPES.

PLANS REFER TO THE NAVD88 DATUM.

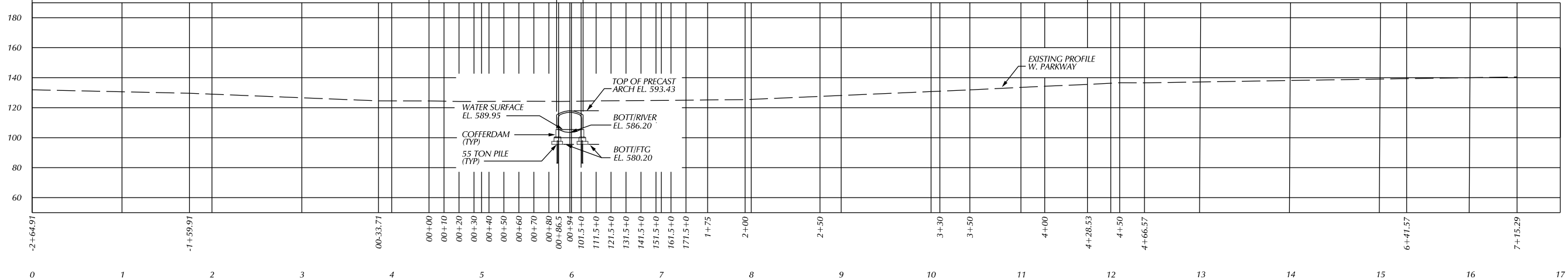
THE SURVEY INFORMATION ON THIS PROJECT WAS ACQUIRED BE THE CITY OF DETROIT DEPARTMENT OF PUBLIC WORKS, CITY ENGINEER DIVISION SURVEYOR.

SCALE	HORIZONTAL	BOOK NO.	PG.	LEVEL DATE	CONTRACTOR
	VERTICAL	PAVING COMPLETED			MUST CHECK WITH UTILITIES FOR LOCATIONS OF EXISTING STRUCTURES WHETHER OR NOT INDICATED ON PLANS.

BENCH MARKS ELEV



**SITUATION PLAN**  
SCALE: 1"=40'-0"



**PROPOSED PROFILE ALONG W. PARKWAY GRADE**  
VERT. SCALE: 1"=10'  
HOR. SCALE: 1"=40'

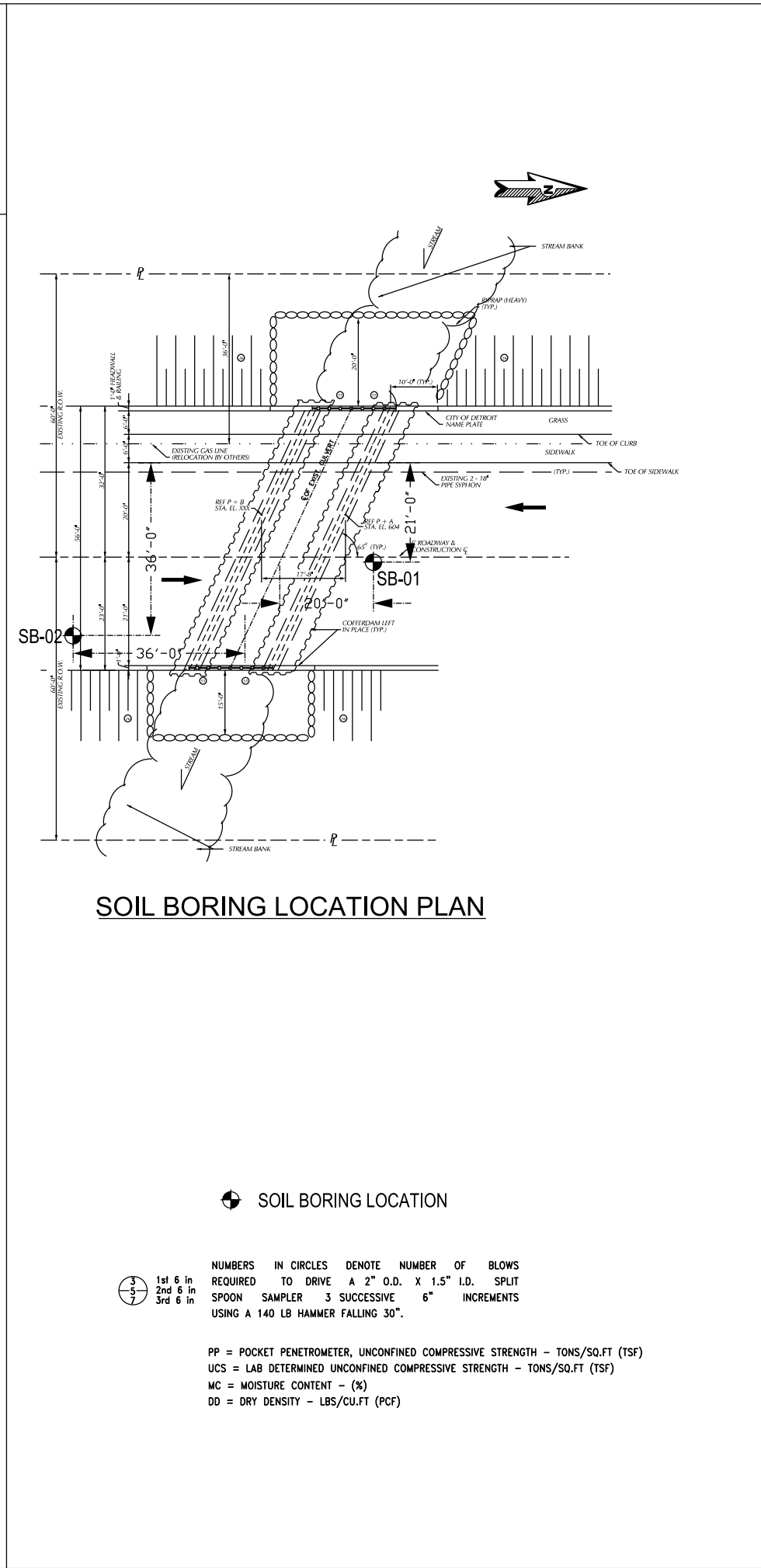
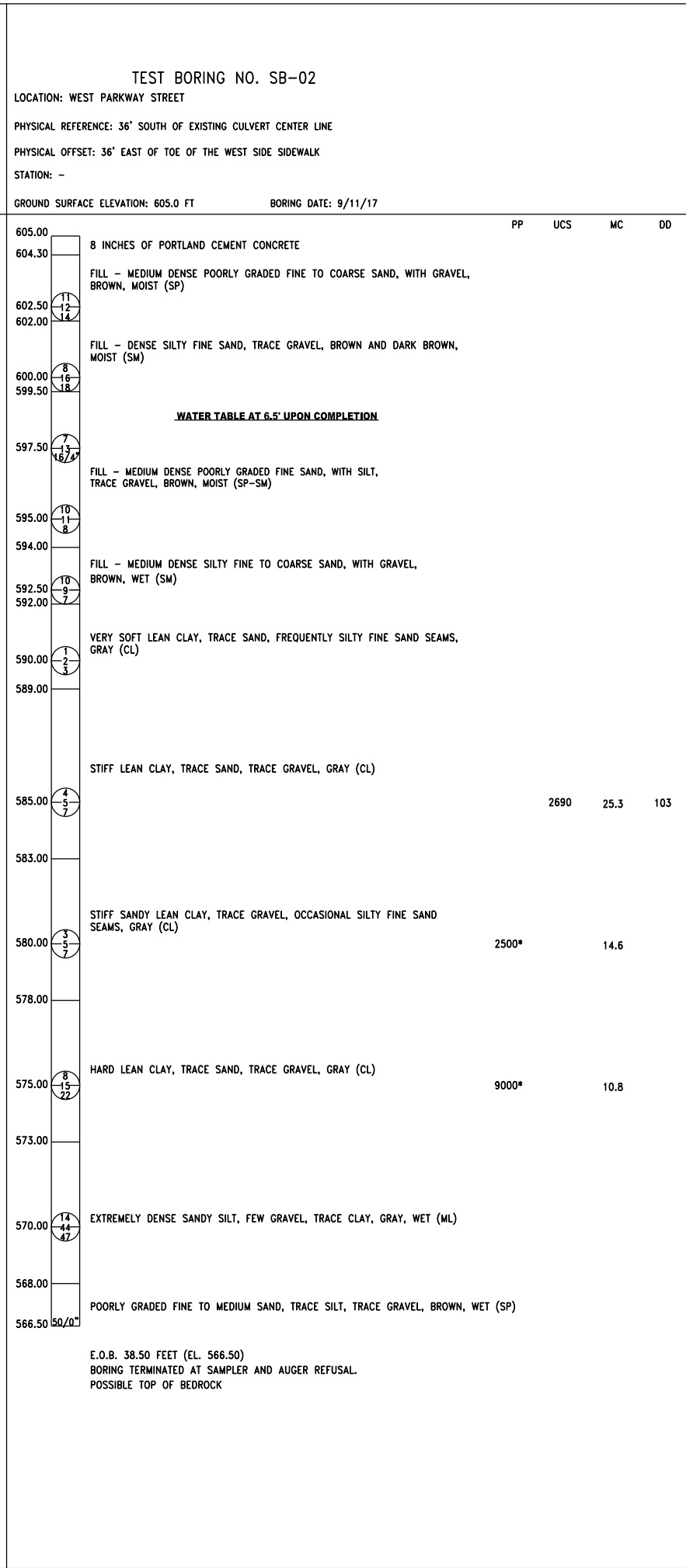
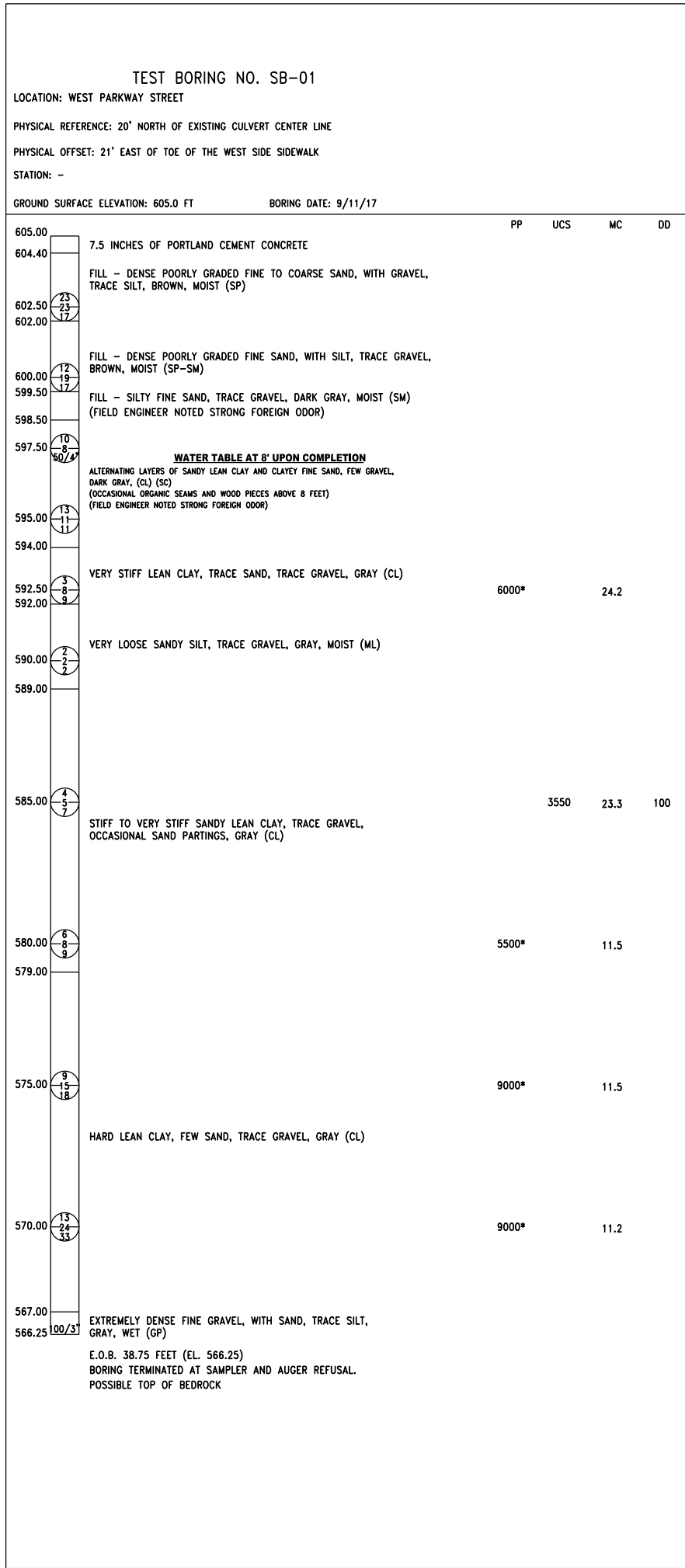
BY	CHECKED BY	APPROVED
PLAN		
GRADE		
ESTIMATE		
DESCRIPTION	DR	CHK
REVISIONS	DATE	DATE

CITY OF DETROIT  
CITY ENGINEERING DIVISION - D.P.W.  
BUREAUS OF STREETS AND HIGHWAYS  
FOR

**WEST PARKWAY CULVERT OVER ROUGE RIVER**

**GENERAL PLAN OF SITE**

SHEET OF SHEETS
CONTRACT NO.
ASSIGNMENT NO.
DATE



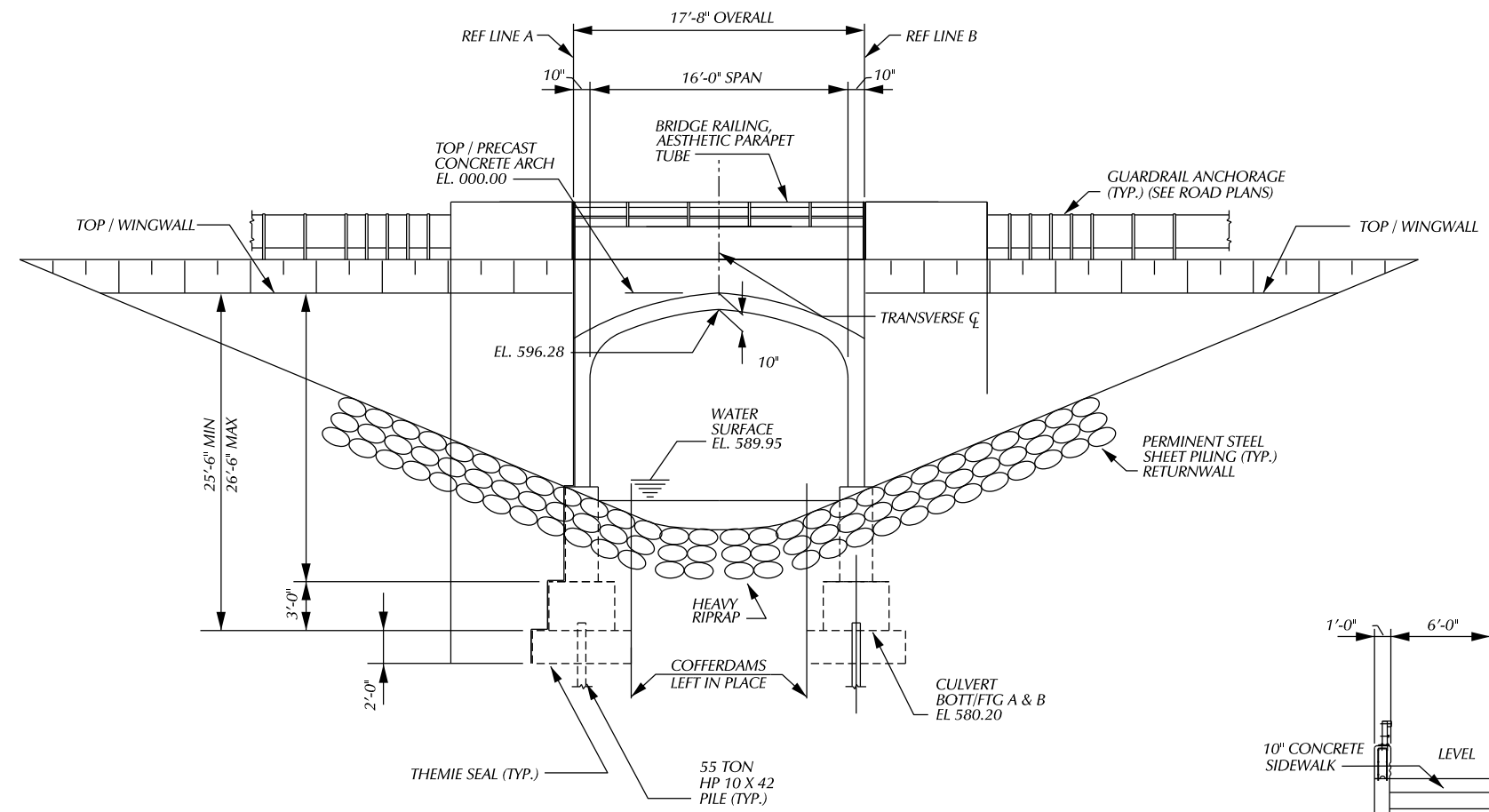
REV#	DATE	DESCRIPTION

**CITY OF DETROIT  
 DEPARTMENT OF PUBLIC WORKS  
 CITY ENGINEERING DIVISION  
 WEST PARKWAY CULVERT REPLACEMENT  
 SOIL BORING LOG PLAN**

ISSUED FOR:  
 DATE:  
 BY:  
 JOB NO.:  
 SHEET: 1 OF 1

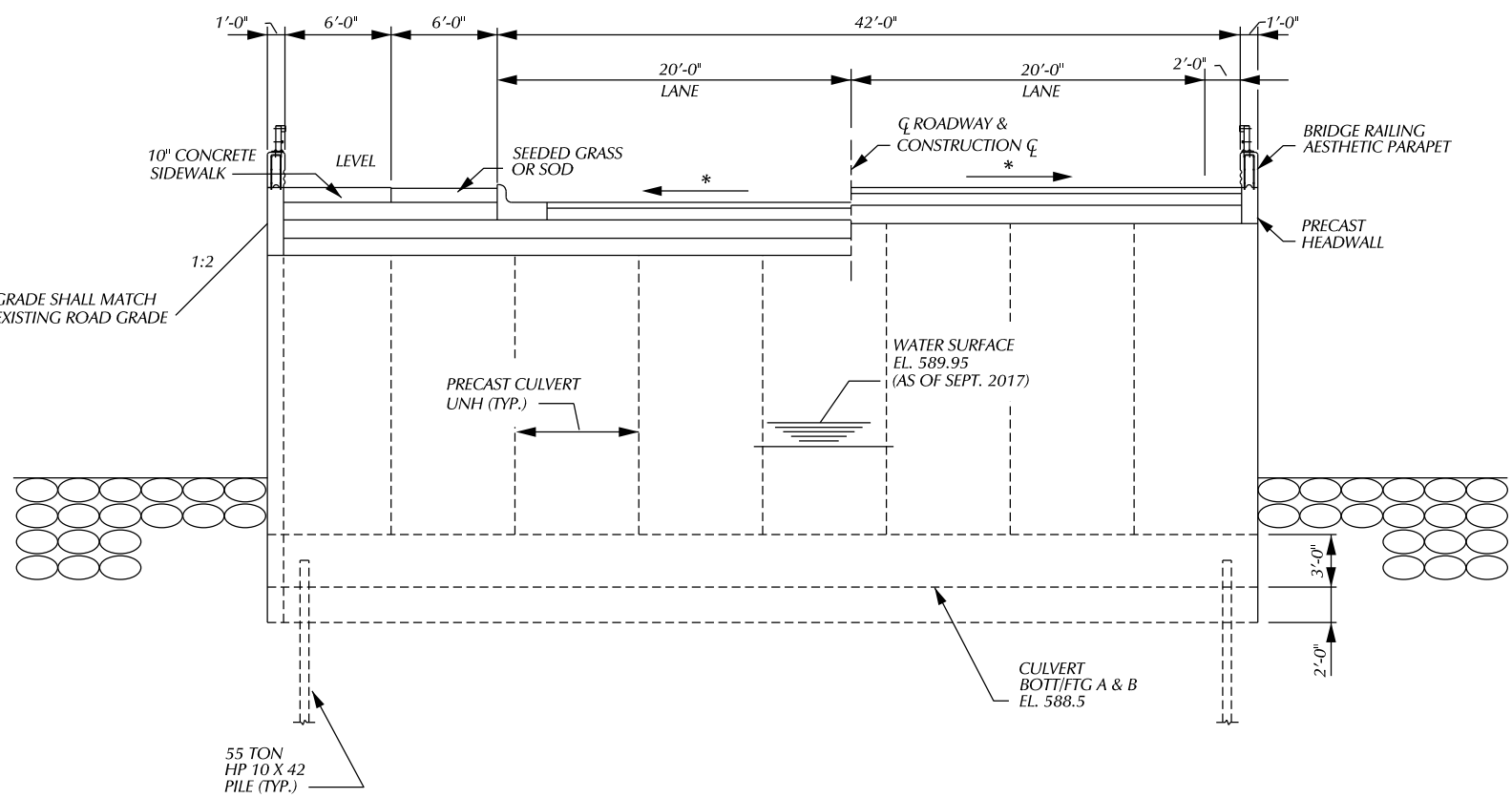
3031 W. Grand Blvd., Ste. 228  
 Detroit, MI 48202  
 Tel: 313-963-2731  
 Fax: 313-963-2736  
 www.somaterial.com





**ELEVATION**

NOTE: \* - GRADE SHALL MATCH EXISTING ROAD GRADE



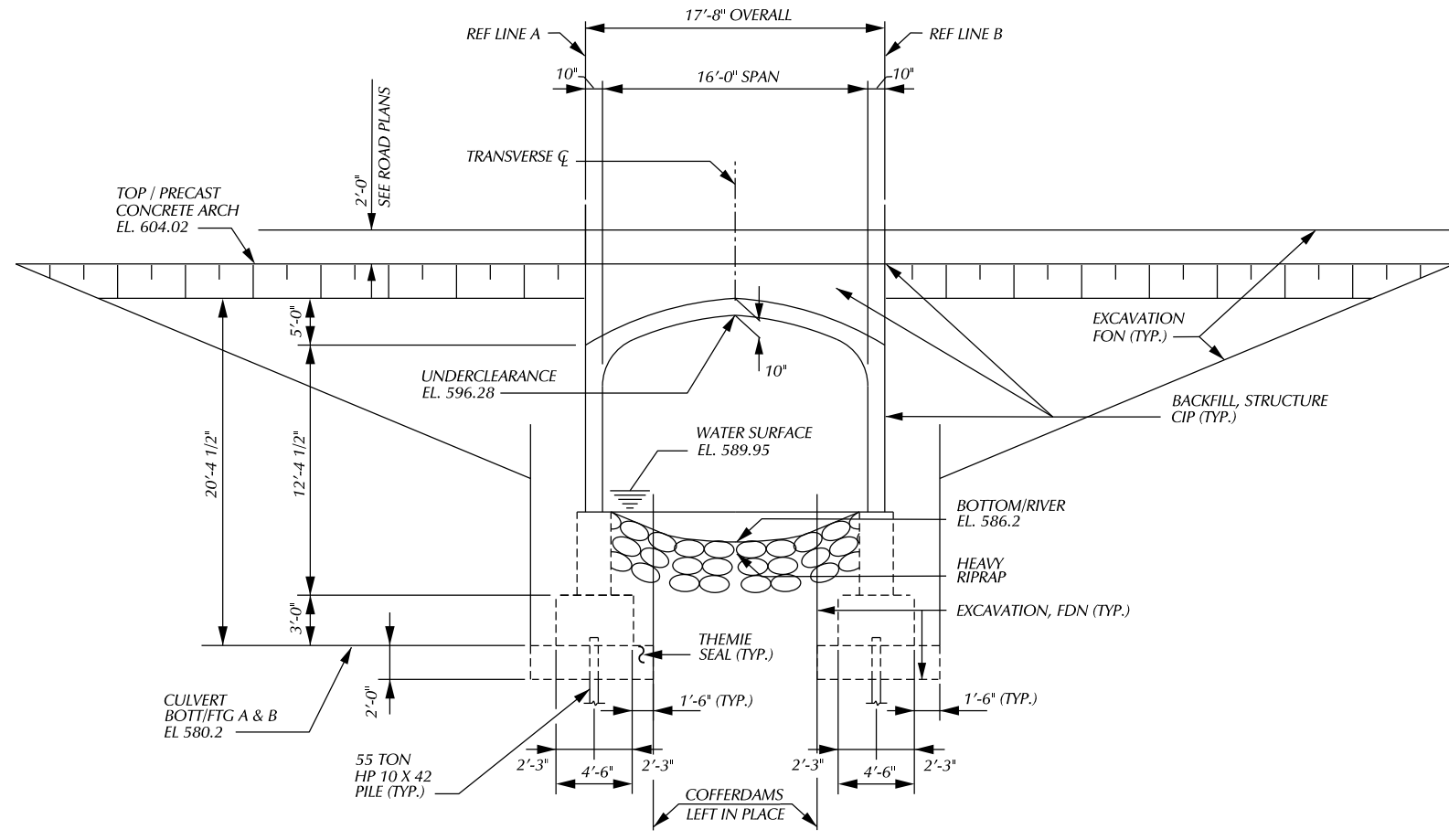
**SECTION A - A**

BY	CHECKED BY	APPROVED:
PLAN		
GRADE		
ESTIMATE		
DESCRIPTION	DR	CHK
REVISIONS	DATE	

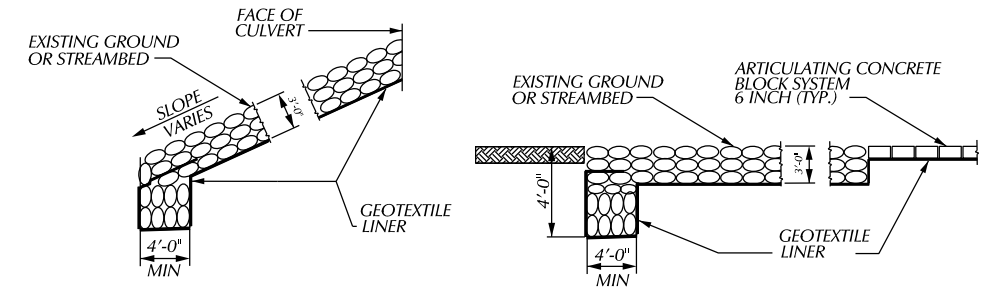
CITY OF DETROIT  
 CITY ENGINEERING DIVISION - D.P.W.  
 BUREAUS OF STREETS AND HIGHWAYS  
 FOR

**WEST PARKWAY CULVERT OVER ROUGE RIVER**  
**GENERAL PLAN OF STRUCTURE**

SHEET	OF	SHEETS
CONTRACT		
NO.		
ASSIGNMENT		
NO.		
DATE		



**CULVERT SECTION**



**RIPRAP HEADER DETAILS**

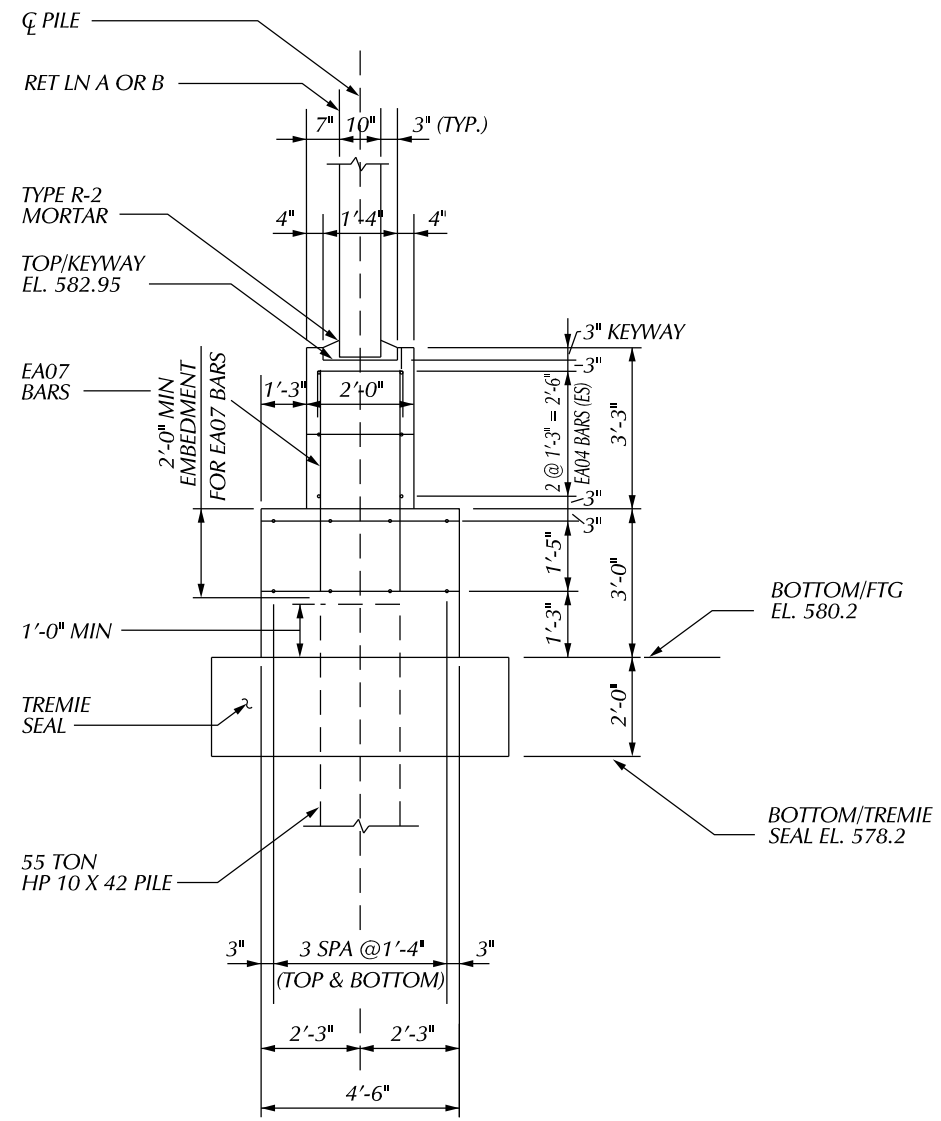
RIPRAP SHALL BE BURIED BELOW TOP OF EXISTING SLOPE

PLAN GRADE ESTIMATE DESCRIPTION REVISIONS		BY CHECKED BY APPROVED:	CITY OF DETROIT CITY ENGINEERING DIVISION - D.P.W. BUREAUS OF STREETS AND HIGHWAYS FOR	WEST PARKWAY CULVERT OVER ROUGE RIVER GENERAL PLAN OF STRUCTURE	SHEET OF SHEETS CONTRACT NO. ASSIGNMENT NO. DATE
---	--	-------------------------------	---	--	---

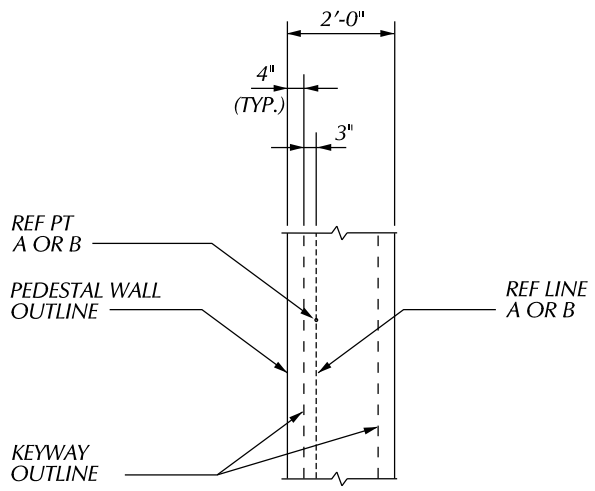
SCALE	HORIZONTAL	BOOK NO.	PG.	LEVEL
	VERTICAL			DATE
		PAVING COMPLETED		

BEFORE STARTING CONSTRUCTION CONTRACTOR  
MUST CHECK WITH UTILITIES FOR LOCATIONS OF EXISTING  
STRUCTURES WHETHER OR NOT INDICATED ON PLANS.

BENCH MARKS ELEV



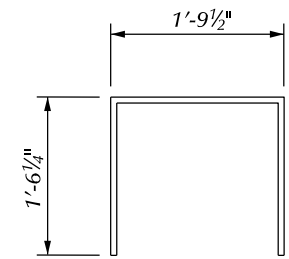
**SECTION THRU PEDESTAL WALL**



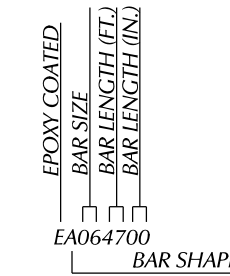
**DETAIL A**

**EPOXY COATED  
STEEL REINFORCEMENT**

BAR	NO. REQ'D	TOTAL WT FTG A	TOTAL WT FTG B

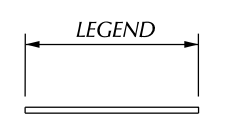


**ED060410**



**EA064700  
BAR SHAPE**

**BAR LEGEND**



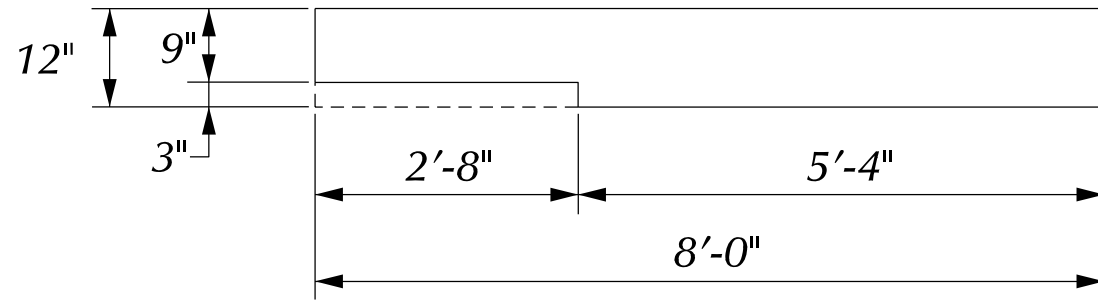
**EA BAR**

					BY	CHECKED BY	APPROVED
DESCRIPTION	DR	CHK	APP	DATE	FINAL	####	####
REVISIONS							

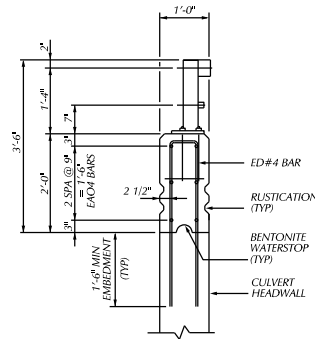
CITY OF DETROIT  
CITY ENGINEERING DIVISION - D.P.W.  
BUREAUS OF STREETS AND HIGHWAYS  
FOR

WEST PARKWAY CULVERT OVER ROUGE RIVER  
CULVERT SUBSTRUCTURE DETAILS

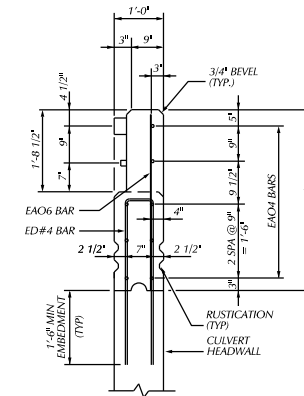
SHEET	OF	SHEETS
CONTRACT NO.		
ASSIGNMENT NO.		
DATE		



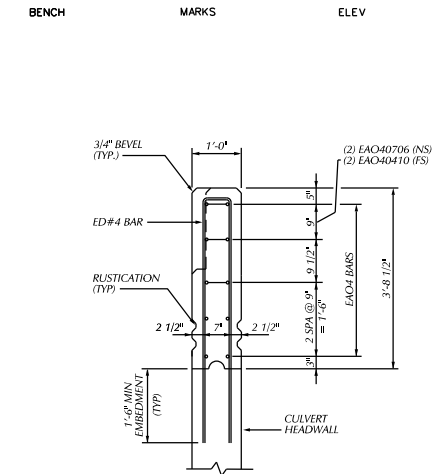
**PLAN - CULVERT END WALL**



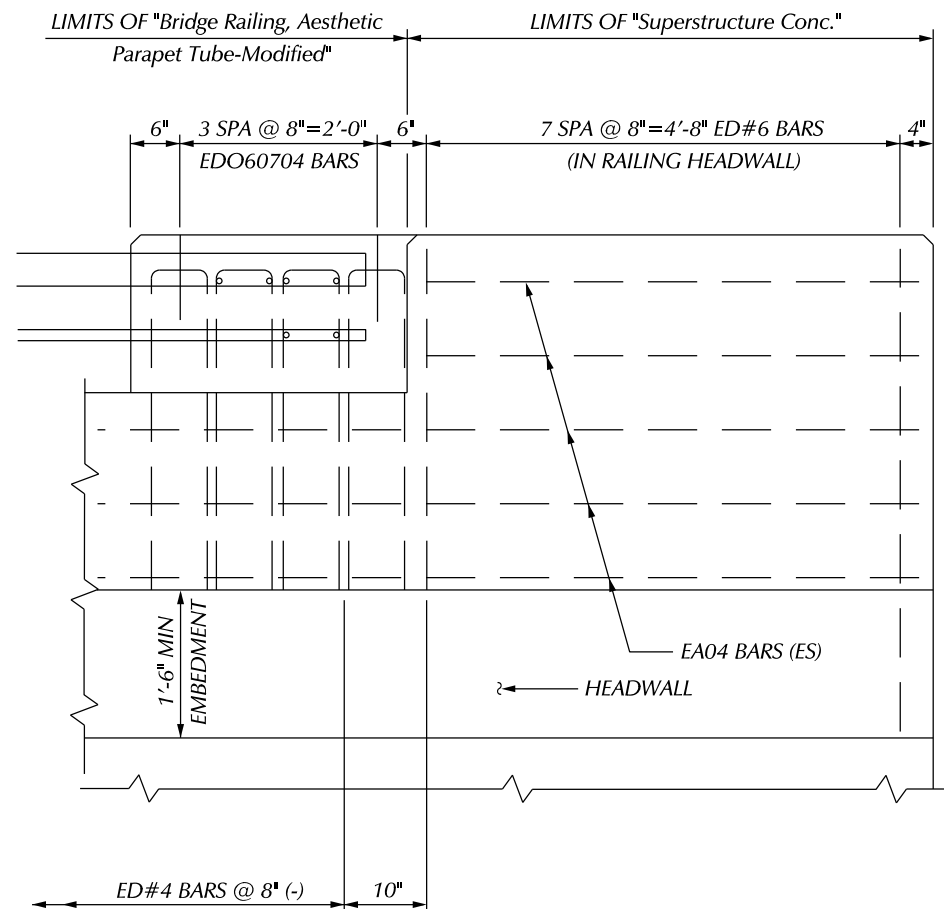
**TYPICAL CULVERT RAILING SECTION**



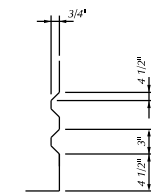
**SECTION AT CULVERT END WALL (TUBE CONNECTION AREA)**



**SECTION AT CULVERT END WALL (FULL CONCRETE AREA)**



**PLAN - CULVERT END WALL DETAIL**



**RUSTICATION DETAIL (SHOWING RUSTICATION)**

BY	CHECKED BY	APPROVED:
PLAN		
GRADE		
ESTIMATE		
DESCRIPTION	DR	CHK
REVISIONS	DATE	

CITY OF DETROIT  
CITY ENGINEERING DIVISION - D.P.W.  
BUREAUS OF STREETS AND HIGHWAYS  
FOR

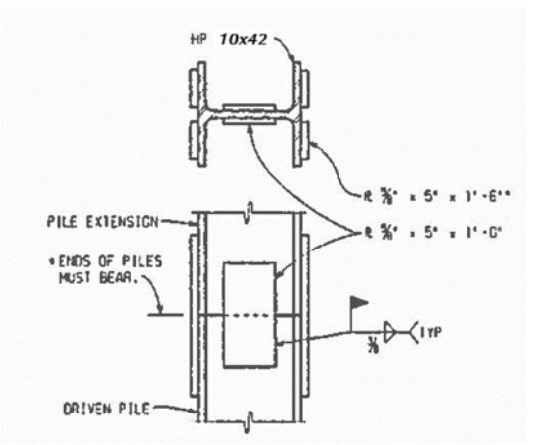
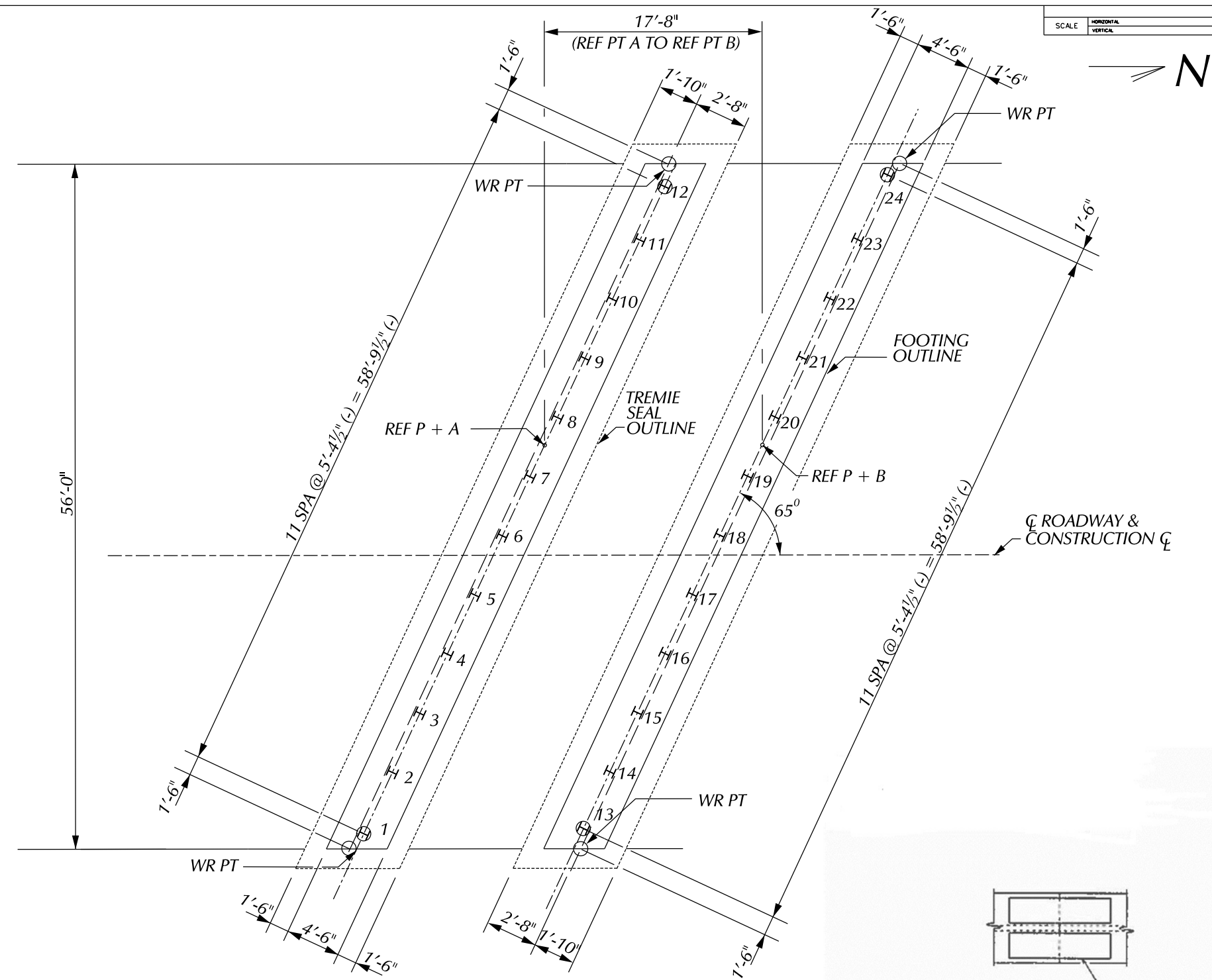
WEST PARKWAY CULVERT OVER ROUGE RIVER

CULVERT RAILING DETAILS

SHEET	OF	SHEETS
CONTRACT NO.		
ASSIGNMENT NO.		
DATE		



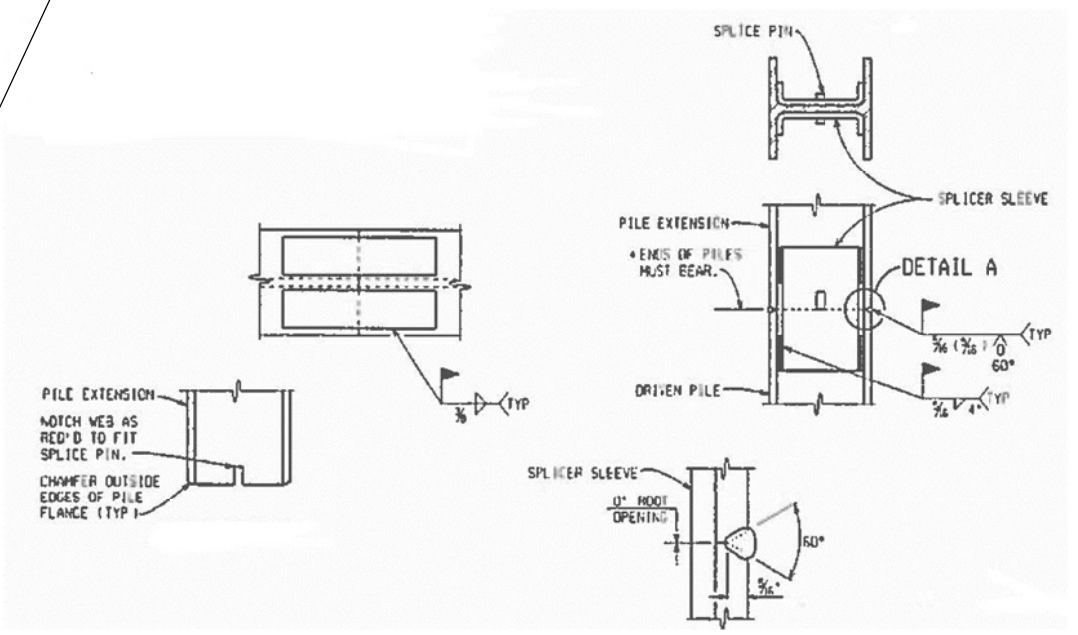
BENCH MARKS ELEV



**SPlice DETAILS**  
\* SET PILE EXTENSION IN PLACE WITH SPlice PLATES ATTACHED. TAP SEVERAL TIMES WITH THE HAMMER TO IMPROVE BEARING CONTACT, THEN COMPLETE WELDING OF PLATES TO THE LOWER SECTION.

55 TON STEEL "H" PILES					
LOCATION	PILE TYPE	NUMBER OF PILES	ESTIMATED LENGTH FURNISHED & DRIVEN EACH LFT	TOTAL LFT	CUT-OFF ELEV.
FTG A	TEST	2	50	100	669.00
	VERTICAL	22	40	720	669.00
FTG B	TEST	2	50	100	669.00
	VERTICAL	22	40	720	669.00
TOTAL				1640	

MISCELLANEOUS QUANTITIES	
1 LS	PILE DRIVING EQUIPMENT, FURN
1640 FT	PILE STEEL, FURN AND DRIVEN, 10 INCH
4 EA	TEST PILE STEEL 10 INCH



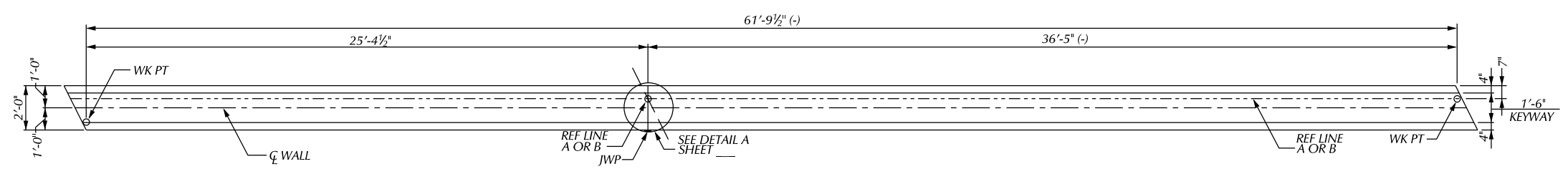
**ALTERNATE SPlice DETAILS**  
\* SET PILE EXTENSION IN PLACE WITH SPlice PLATES ATTACHED. TAP SEVERAL TIMES WITH THE HAMMER TO IMPROVE BEARING CONTACT, THEN COMPLETE WELDING OF PLATES TO THE LOWER SECTION.

**NOTES:**  
 H - DENOTES VERTICAL PILES.  
 ⊕ - DENOTES VERTICAL TEST PILES.  
 ALL PILES SHALL BE DRIVEN TO A MINIMUM BEARING CAPACITY OF 55 TONS.  
 STEEL PILES SHALL BE HP 10 X 42.  
 ESTIMATED PILE PENETRATIONS HAVE BEEN DETERMINED BY USE OF THE STATIC FORMULA.  
 THE PILE DRIVING FORMULAS IN THE STANDARD SPECIFICATIONS ARE NOT TO BE USED TO DETERMINE BATTERED PILE CAPACITY. BATTERED PILES ARE TO BE DRIVEN TO THE ELEVATION ESTABLISHED FOR VERTICAL FILES.  
 THE USE OF VIBRATORY HAMMERS FOR INSTALLING H-PILES SHALL NOT BE ALLOWED.

PLAN	BY	CHECKED BY	APPROVED
GRADE			
ESTIMATE			
FINAL	****	****	

CITY OF DETROIT  
 CITY ENGINEERING DIVISION - D.P.W.  
 BUREAUS OF STREETS AND HIGHWAYS  
 FOR

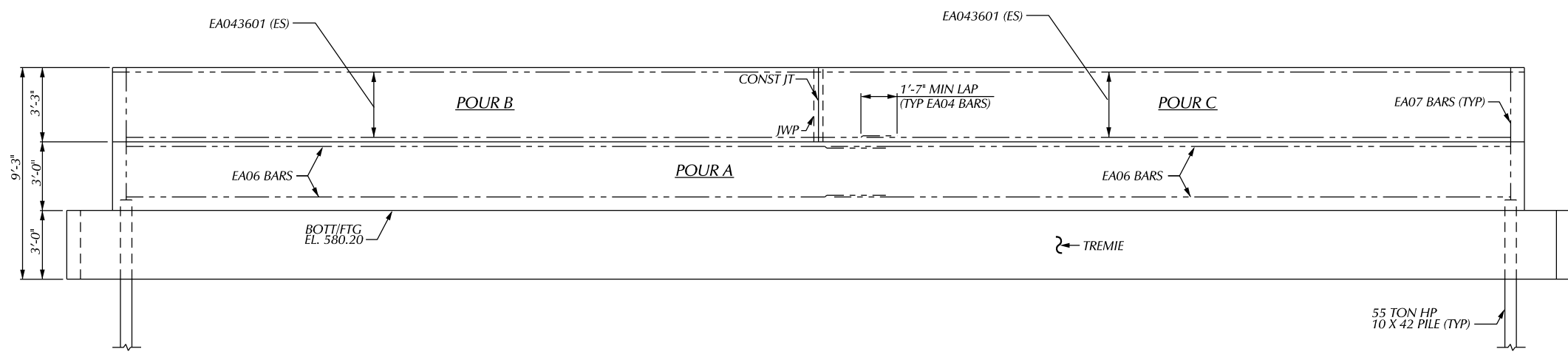
WEST PARKWAY CULVERT OVER ROUGE RIVER	SHEET OF SHEETS
CULVERT H PILE DETAILS	CONTRACT NO.
	ASSIGNMENT NO.
	DATE



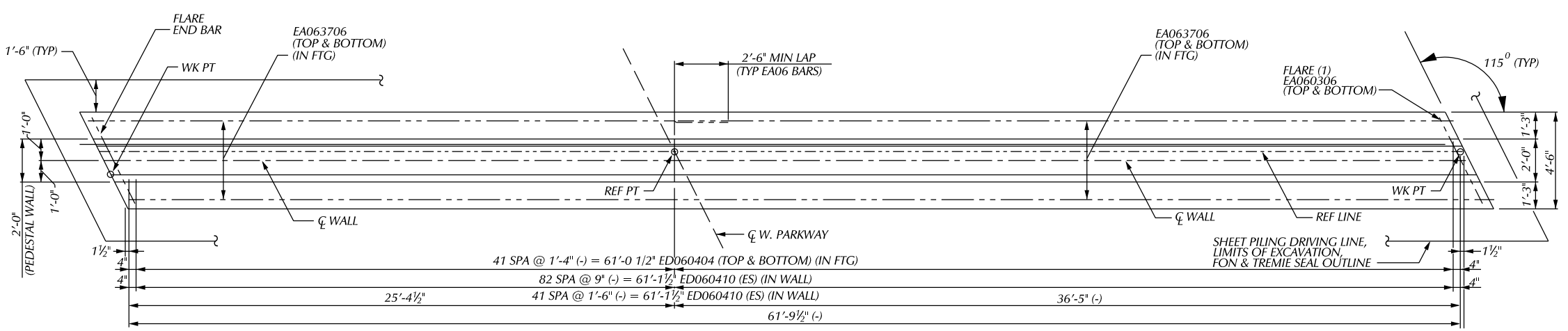
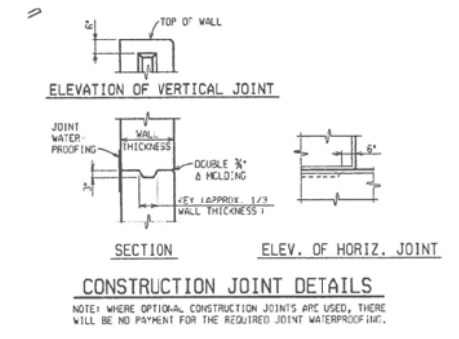
PLAN OF PEDESTAL WALL

MISCELLANEOUS QUANTITIES			
WALL A	WALL B	TOTAL	
36	36	158 CYD	CONC. GRADE T
—	—	171 CYD	SUBSTRUCTURE CONC.
—	—	14610 LB	REINFORCEMENT STEEL, EPOXY COATED
28	28	56 SFT	JOINT WATERPROOFING

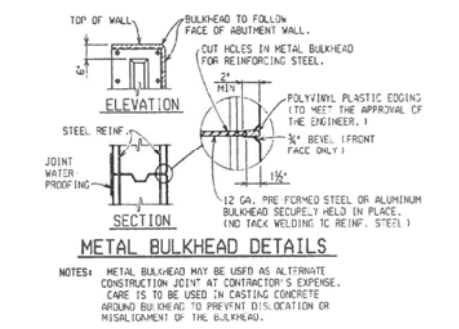
SUBSTRUCTURE CONCRETE QUANTITIES		
POUR	FTG A	FTG B
A	32.2	32.2
B	18	18
C	17.3	17.3
D	18	18



ELEVATION - PEDESTAL WALL

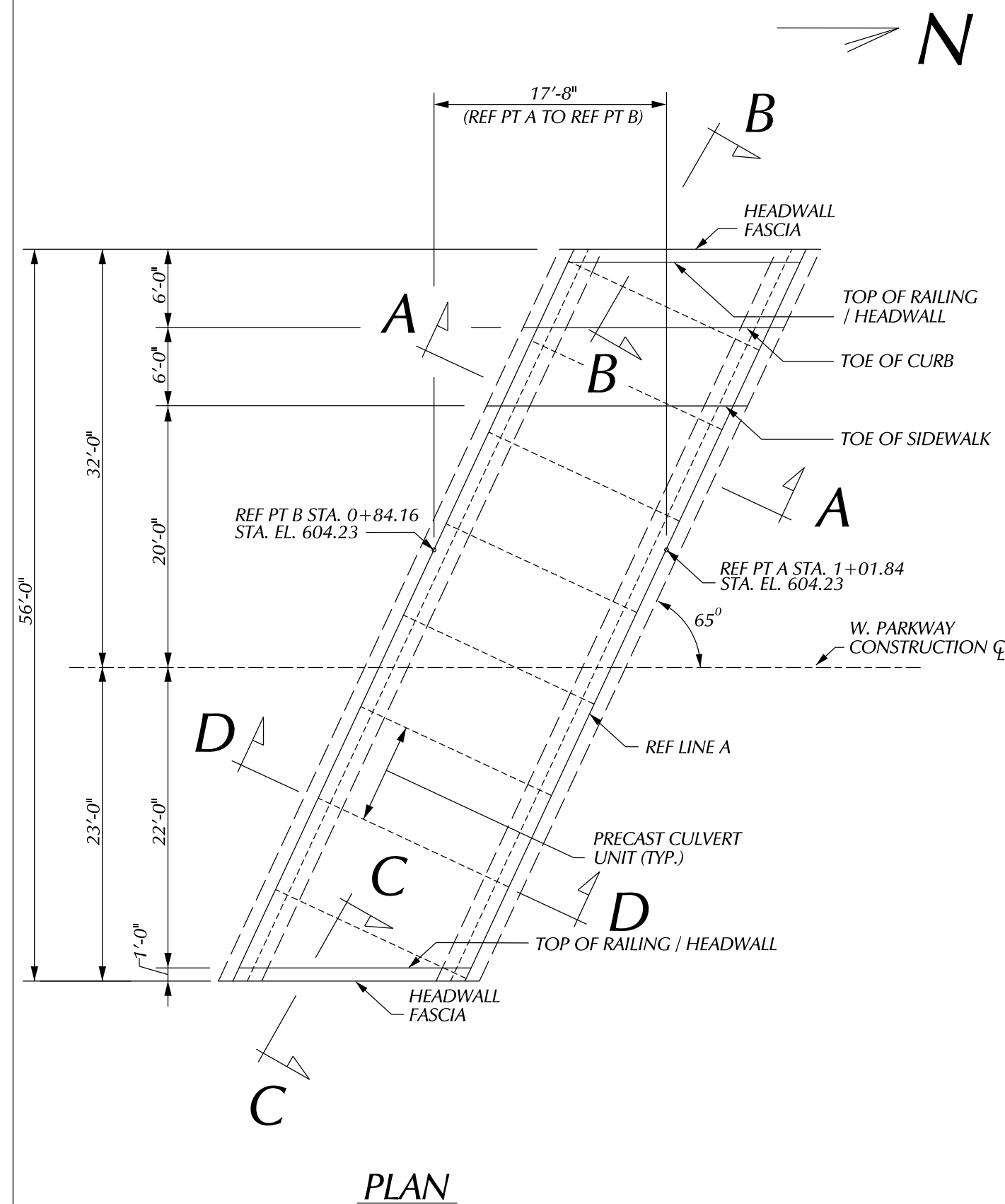


PLAN OF FOOTINGS  
(FTG A SHOWN, FTG B OPPOSITE)

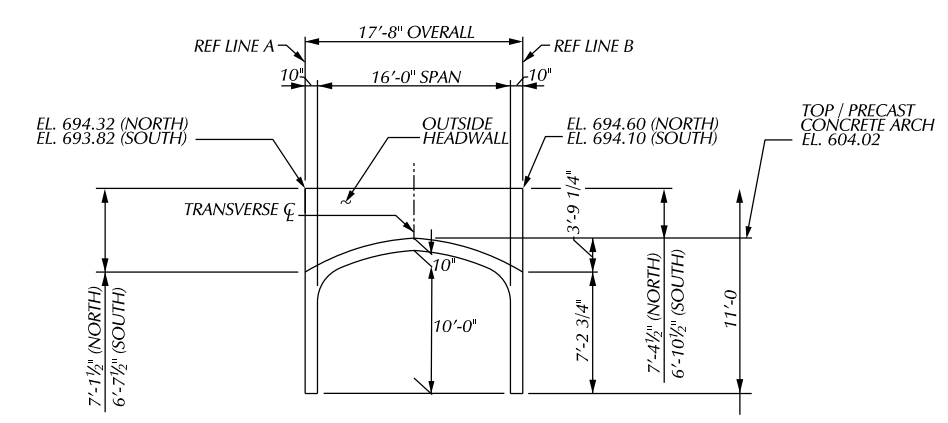


**NOTES:**  
 THE SUBSTRUCTURE DESIGN IS BASED ON A FACTORED MAXIMUM VERTICAL LOAD OF 20 KIPS/FT AND A HORIZONTAL LOAD OF 8 KIPS/FT.  
 JWP DENOTES JOINT WATERPROOFING.  
 FOR PILE QUANTITIES, LAYOUT AND NOTES, SEE SHEET \_\_\_\_.  
 LOW TEMPERATURE PROTECTION OF CONCRETE SHALL BE APPLIED ACCORDING TO SECTION 706.03J OF THE STANDARD SPECIFICATIONS FOR CONSTRUCTION.  
 LOW TEMPERATURE PROTECTION OF CONCRETE WILL NOT PAID FOR SEPARATELY BUT WILL INCLUDED IN THE BID ITEM FOR "SUBSTRUCTURE CONC" AND "CONCRETE GRADE T".

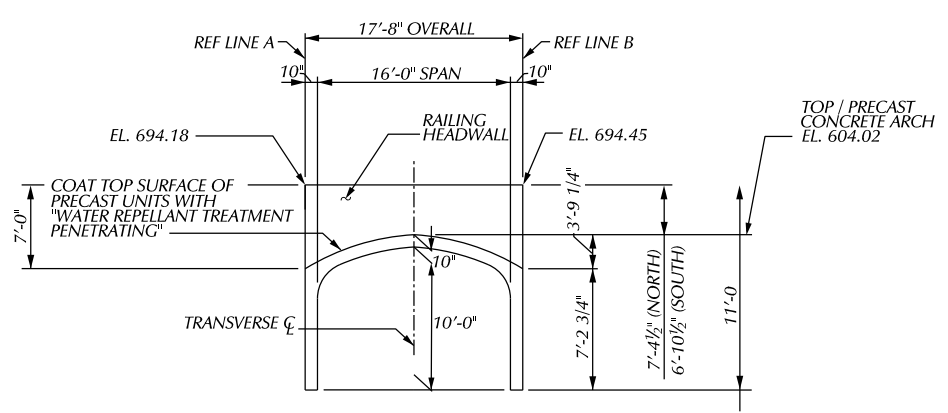
PLAN	BY	CHECKED BY	APPROVED:	CITY OF DETROIT CITY ENGINEERING DIVISION - D.P.W. BUREAUS OF STREETS AND HIGHWAYS FOR	WEST PARKWAY CULVERT OVER ROUGE RIVER CULVERT SUBSTRUCTURE DETAILS	SHEET	OF	SHEETS	
GRADE						CONTRACT			
ESTIMATE						NO.			
DESCRIPTION	OR	NO	DATE			ASSIGNMENT			
REVISIONS	FINAL	*****	*****			NO.		DATE	



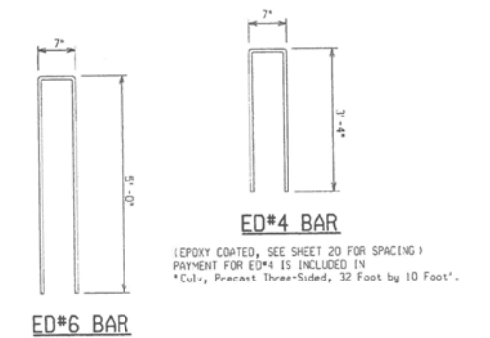
**PLAN**



**SECTION A-A**  
(ED BARS NOT SHOWN FOR NORTH HEADWALL)

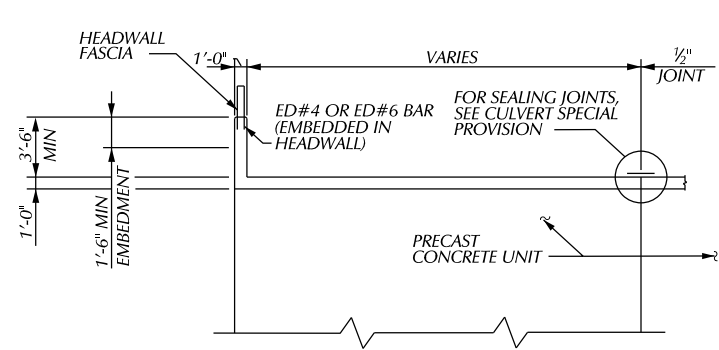


**SECTION D-D**  
(ED BARS NOT SHOWN)

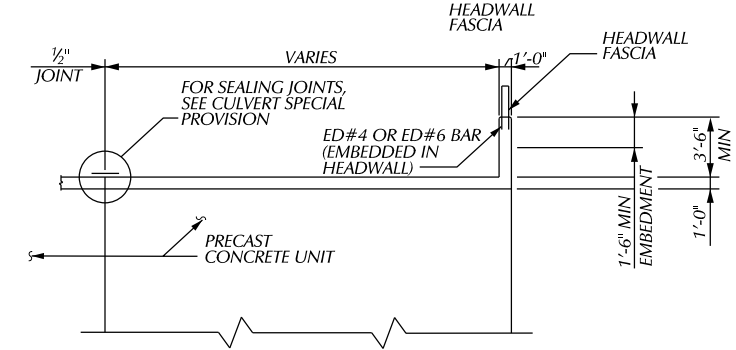


MISCELLANEOUS QUANTITIES	
___ FT	CULV, PRECAST THREE-SIDED OR ARCH, ___ FOOT BY ___ FOOT
___ SYD	WATER REPELLANT TREATMENT, PENETRATING

**NOTES:**  
DESIGN ALL CULVERT / HEADWALL CONNECTIONS FOR TRAFFIC LOADS.  
PAYMENT FOR TEXTURING ON HEADWALLS SHALL BE INCLUDED IN, \*CULV, PRECAST THREE-SIDED, \_\_\_ FOOT BY \_\_\_ FOOT. SEE SPECIAL PROVISION FOR TEXTURING CONCRETE. THE FORM LINERS FOR THE HEADWALL MUST BE THE SAME AS THOSE USED ON THE SHEET PILING WALLS.



**SECTION B-B**



**SECTION C-C**

PLAN	BY	CHECKED BY	APPROVED:
GRADE			ENGINEER BY STREET
ESTIMATE			
DESCRIPTION	DR	CHK	DATE
REVISIONS	FINAL	****	****

CITY OF DETROIT  
CITY ENGINEERING DIVISION - D.P.W.  
BUREAUS OF STREETS AND HIGHWAYS  
FOR

**WEST PARKWAY CULVERT OVER ROUGE RIVER**  
**CONCRETE ARCH DETAILS**

SHEET	OF	SHEETS
CONTRACT		
NO.		
ASSIGNMENT		
NO.		
DATE		

DATE	REVISIONS
	OLD MAP 3-30-15
6-25-58	Added Note 'X' 6-12-58 J.E. QUANTITY CHANGE FOR ALLEY RETURN REMOVAL SEE SHEET 22 FOR QUANTITIES

ADJUST W.M.H. (EASE, M.H. 10'S) EA. REMOVED CONC. WALK. TOP LYS PAVING 8'x6' 30 YDS 432' 13' FULL SAND FRAIL " 2712' 364' 4027' 1-1' 625'

BEFORE STARTING CONSTRUCTION CONTRACTOR MUST CHECK WITH UTILITIES FOR LOCATIONS OF EXISTING STRUCTURES WHETHER OR NOT INDICATED ON PLANS.

SCALE  
LOTS & ALLEYS 1" = 60'  
STREET WIDTH 1" = 60'  
VERTICAL 1" = 10'

DRAINAGE COMPLETED  
PAVING COMPLETED C.C. 8-4-59

QUANTITIES		ESTIMATED	
EXCAVATION	CU. YDS.	LOTS	CITY
NEW CURB	11	761	713
PAVING 10'-8" 10'	30 YDS	4008	269
2" 10" UNIF. 30 YD			218
2" 18" UNIF. 25 YD			218
TEST CORES	24	5	
SIDEWALK 4" CONC. 30 FT.		2836	
MANHOLES		120	
CONSTRUCT CONC. RECONSTRUCT		2-21	
ADJUST		1	
BASINS		10	
SEWER-12" LIN. FT.		500	

58-4 ✓

INDEX NO. 77  
117

CONTRACT NO. P.W. 3249 F

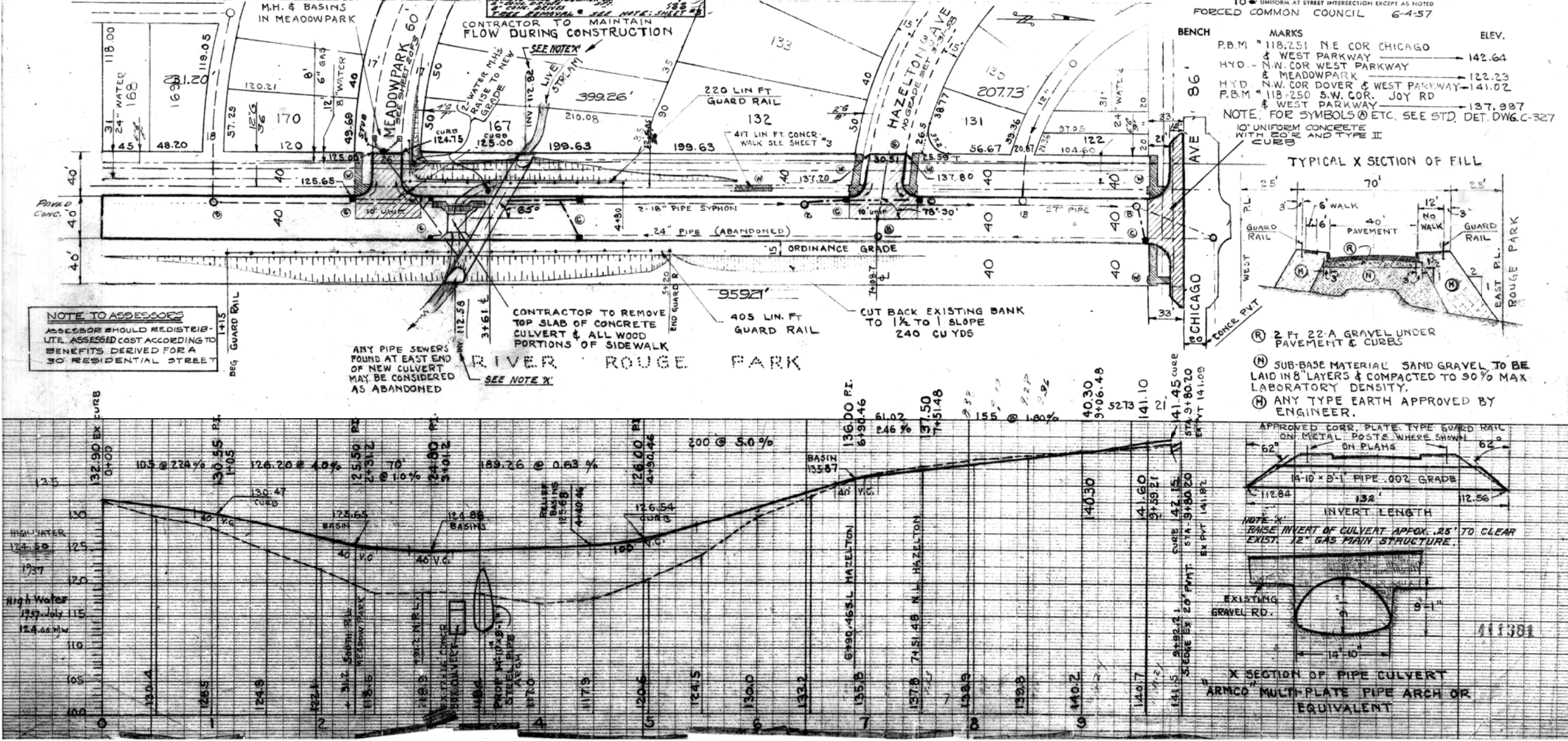
STREET PAVING PLAN  
CITY OF DETROIT  
DEPARTMENT OF PUBLIC WORKS - CITY ENGINEERS OFFICE

NAME OF STREET WEST PARKWAY

FROM 959.21' S. OF S.L. CHICAGO  
TO 33' N. OF S.L. CHICAGO

TYPE OF PAVEMENT 10'-8" 10' ONE COURSE CONCRETE INTEGRAL CURB 40 FT. WD.  
10' UNIFORM AT STREET INTERSECTION EXCEPT AS NOTED  
FORCED COMMON COUNCIL 6-4-57

MADE BY H. J. SMITH  
CHECKED BY J. E. SMITH  
ESTIMATE H. J. SMITH  
SEWER APPROVED J. E. SMITH  
FINAL CHECK J. E. SMITH  
APPROVED B. J. SMITH  
ENGINEER OF STREETS  
CITY ENGINEER



EXISTING

FOR INFORMATION ONLY

DO NOT WORK FROM THIS SHEET. THE INFORMATION SHOWN HERE IS FOR REFERENCE ONLY. NO PAY ITEMS ARE SHOWN.



DATE	REVISIONS
OLD MAP	3-20-63
	Added Sec. AA 6-12-58 J.E.

SUPPLEMENTARY DETAILS			
C-325	C-324	C-323	C-928
C-326A	C-325	C-329	C-1608
C-327	C-326	C-329A	C-1783
C-390	C-387	C-329B	

**BEFORE STARTING CONSTRUCTION**  
CONTRACTOR MUST CHECK WITH UTILITIES FOR LOCATIONS OF EXISTING STRUCTURES WHETHER OR NOT INDICATED ON PLANS.

SCALE

LOTS & ALLEYS

STREET WIDTH

VERTICAL

DRAINAGE COMPLETED

PAVING COMPLETED C.C. 8-4-59

QUANTITIES	ESTIMATED	
	LOTS	CITY
EXCAVATION CU. YDS.		
NEW CURB LIN. FT.		
PAVING SQ. YDS.		
TEST CORES		
SIDEWALK		
MANHOLES	ADJUST	
	CONSTRUCT	
ASINS	ADJUST	
	CONSTRUCT	
SEWER-12"	LIN. FT.	

REVISION NO. FCC	REVISION DATE 6-4-57
ASSIGNMENT NO.	GROUP NO.
BOOK NO.	LEVEL DATE
LOTS 21	LENGTH
CITY 21	LENGTH
TOTAL	LENGTH
DATE OF DRAWING	

MADE BY	CHECKED BY
PLANNED BY	
DESIGNED BY	
ESTIMATE	
SEWER APPROVED	
FINAL CHECK	
APPROVED	
CITY ENGINEER	

CONTRACT NO. P.W. 3249 F

**STREET PAVING PLAN**  
CITY OF DETROIT

DEPARTMENT OF PUBLIC WORKS - CITY ENGINEERS OFFICE

NAME OF STREET WEST PARKWAY

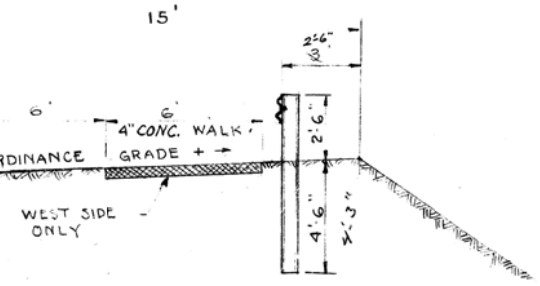
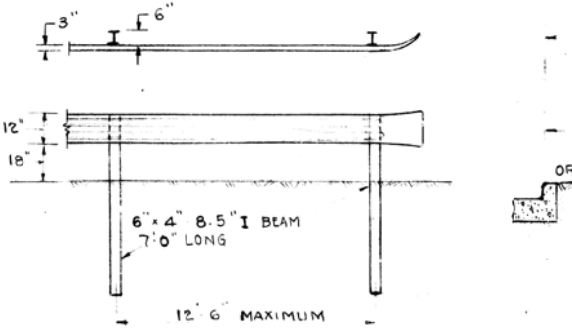
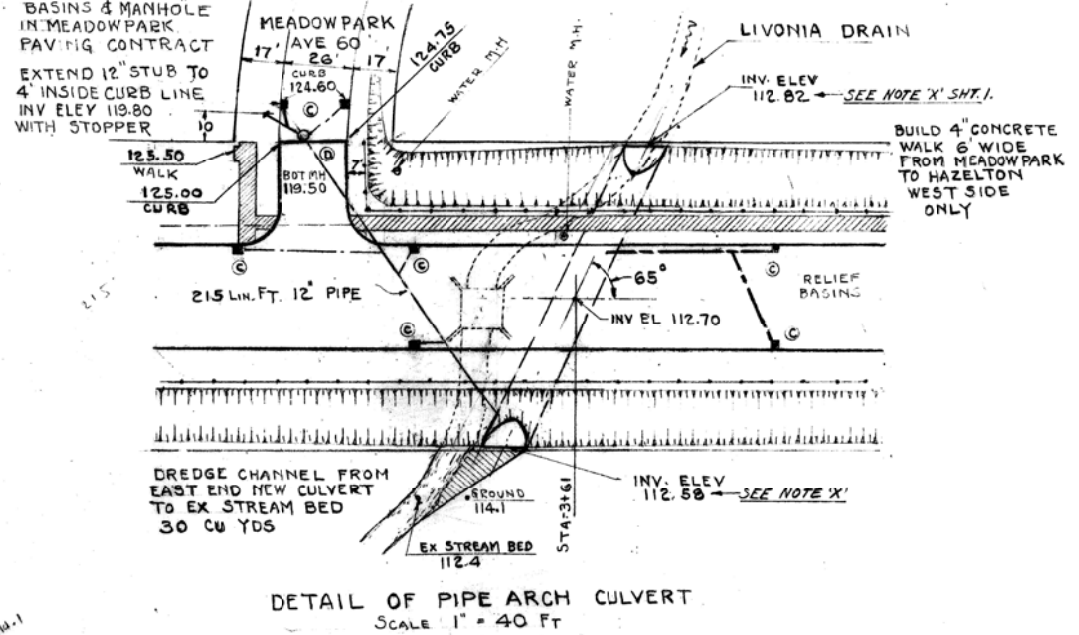
FROM 959.2' S OF S.L. CHICAGO

TO 33' N OF S.L. CHICAGO

TYPE OF FAVEMENT 8 & 8 ONE COURSE CONCRETE INTEGRAL CURB  
8" UNIFORM AT STREET INTERSECTION EXCEPT AS NOTED

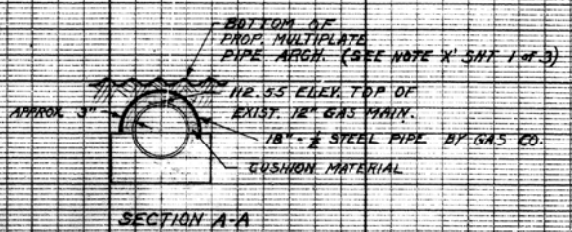
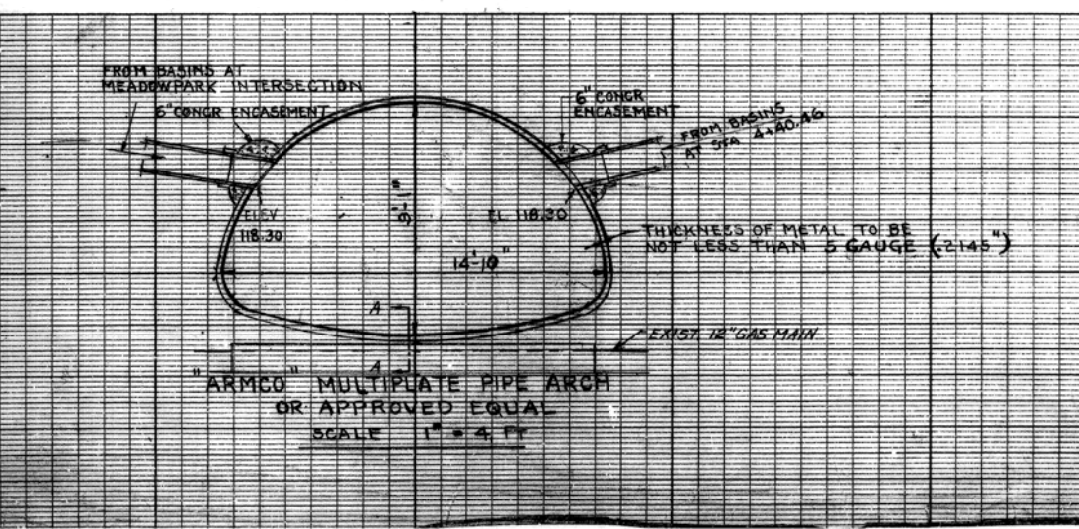
FORCED COMMON COUNCIL 6-4-57

BENCH MARKS ELEV.



FOR LOTS ONLY

STA.	SIZE	NO.
0173	6" ASH	1
0177	6" ASH	2
0185	6" ASH	1
2110	8" ASH	1
2116	10" OAK	1
2127	10" OAK	1
2135	12" OAK	1
2177	8" ASH	1
2185	8" ASH	1
3122	8" ASH	1
3125	8" ASH	1
3126	8" ASH	1
3127	8" ASH	1
3128	8" ASH	1
3129	8" ASH	1
3130	8" ASH	1
3131	8" ASH	1
3132	8" ASH	1
3133	8" ASH	1
3134	8" ASH	1
3135	8" ASH	1
3136	8" ASH	1
3137	8" ASH	1
3138	8" ASH	1
3139	8" ASH	1
3140	8" ASH	1
3141	8" ASH	1
3142	8" ASH	1
3143	8" ASH	1
3144	8" ASH	1
3145	8" ASH	1
3146	8" ASH	1
3147	8" ASH	1
3148	8" ASH	1
3149	8" ASH	1
3150	8" ASH	1
3151	8" ASH	1
3152	8" ASH	1
3153	8" ASH	1
3154	8" ASH	1
3155	8" ASH	1



411392

EXISTING

FOR INFORMATION ONLY

DO NOT WORK FROM THIS SHEET. THE INFORMATION SHOWN HERE IS FOR REFERENCE ONLY. NO PAY ITEMS ARE SHOWN.