

INDEX OF SHEETS

SHEET NO.	DESCRIPTION	# OF SHEET
1	TITLE SHEET	1
2	GENERAL PLAN OF SITE	1
3	MAINTAINING TRAFFIC	1
4	ROAD - REMOVAL	1
5	ROAD - CONSTRUCTION	1
6 - 25	ROAD - DETAILS	20
26	SOIL BORINGS	1
27 - 29	GENERAL PLAN OF STRUCTURES	3
30 - 31	EXISTING PLAN	2
32	CULVERT H-PILE LAYOUT	1
33 - 34	CULVERT SUBSTRUCTURE DETAILS	2
35	CONCRETE ARCH DETAILS	1
36 - 37	SHEET PILE WALLS DETAILS	2
38 - 39	CULVERT & RETAINING WALL RAILING DETAILS	2

STANDARD PLANS

WHERE THE FOLLOWING ITEMS ARE CALLED FOR ON THE PLANS THEY ARE TO BE CONSTRUCTED ACCORDING TO THE STANDARDS PLAN GIVEN BELOW OPPOSITE EACH ITEM UNLESS OTHERWISE INDICATED

ROAD

- SIDEWALK RAMP DETAILS
- DRIVEWAY OPENINGS & APPROACHES AND CONCRETE SIDEWALKS
- CONCRETE CURB AND CONCRETE CURB & GUTTERS
- LONGITUDINAL PAVEMENT JOINTS
- TYPICAL JOINT LAYOUT FOR CONCRETE PAVEMENT
- LOCATION OF TRANSVERSE JOINTS IN PLAIN CONCRETE PAVEMENT
- CONCRETE PAVEMENT REPAIR
- GUARDRAIL TYPES A, B, BD, T AND TD
- GUARDRAIL ANCHORAGE, BRIDGE, DETAILS
- GRANULAR BLANKET, UNDERDRAINS AND OUTLET ENDINGS FOR UNDERDRAINS
- SOIL EROSION & SEDIMENTATION CONTROLS MEASURES
- SCODING, SEEDING AND TREE PLANTING
- SUPERELEVATION AND PAVEMENT CROWNS
- TEMPORARY TRAFFIC CONTROL DEVICES
- GUARDRAIL AT INTERSECTIONS

BRIDGE

- BRIDGE RAILING, AESTHTIC PARAPET TUBE
- MOLDING, BEVEL, LIGHT STANDARD ANCHOR BOLT ASSEMBLY AND NAME PLATE DETAILS
- SEE ROAD PLANS FOR ADDITIONAL STANDARD PLANS & SPECIAL DETAILS.

PUBLIC UTILITIES

<p>AT&T METRO EAST 100 S MAIN ST, SUITE 314 MT CLEMENS, MI 487043-2374 JOE SIKOKI</p> <p>RIGHT OF WAY- METRO WEST 17651 MICHIGAN AVE., RM 301 DEARBORN, MI 48126 KEVIN LOGAN CELL FAX K129152att.com MARK BRANAM Mark.branam@att.com BRADLEY HALL Bradley.hall@att.com DEREK BULKLEY Derek.m.bulkley@att.com</p> <p>NOTE: AT&T WILL REQUIRE FIVE TO SEVEN BUSINESS DAYS ADVANCE NOTICE PRIOR TO ADJUSTING FRAMES AND COVERS. CONTACT AT&T AT (734) 523-6883.</p> <p>CITY OF DETROIT PUBLIC LIGHTING AUTHORITY OF DETROIT 65 CADILLAC SQUARE, SUITE 3100 DETROIT, MI 48226 PHONE WEBSITE: www.pladetroit.org</p> <p>CITY OF DETROIT DETROIT WATER & SEWERAGE DEPARTMENT 6425 HUBER (CSF) A-219 DETROIT, MI 48211 DEBRA SINGLETON dsingleton@dwsd.org EMERGENCY 24 HOUR SERVICE</p>	<p>TELEPHONE</p> <p>(586) 466-6310</p> <p>(313) 240-5482 (734) 223-5645 (313) 982-1029</p> <p>(313) 240-5390</p> <p>(313) 466-1049</p> <p>(313) 240-5480</p> <p>(313) 324-8290</p> <p>(313) 267-8309</p> <p>(313) 267-7401</p>	<p>CITY OF DETROIT DETROIT FIRE DEPARTMENT FIRE MARSHAL'S DIVISION 1301 THIRD STREET DETROIT, MI 48226 PHONE CHIEF OTIS B. HOLT FAX</p> <p>CITY OF DETROIT, DETROIT POLICE DEPARTMENT DETROIT PUBLIC SAFETY HEADQUARTERS 1301 THIRD STREET DETROIT, MI 48226 PHONE FAX</p> <p>CITY OF DETROIT TRAFFIC ENGINEERING, D.P.W. 2633 MICHIGAN AVENUE DETROIT, MI 48207 ASHOK PATEL FAX AshPat@detroitmi.gov JUBI CHACKUNKAL JubCha@detroitmi.gov KIRIT PATEL Patelki@detroitmi.gov</p> <p>SIGN SHOP 2425 FENKELL DETROIT, MI 48238 SIGN SHOP MANAGE FAX</p> <p>COMCAST CABLEVISION 12775 LYNDON DETROIT, MI 48227 BENE CUMMINGS FAX</p>	<p>FIRE CALL BOXES AND FIRE HYDRANTS</p> <p>(313) 596-2900 (313) 224-1311 (313) 596-2978</p> <p>POLICE CALL BOXES</p> <p>(313) 596-2200 (313) 596-1450</p> <p>PAVEMENT MARKINGS, SIGNS & TRAFFIC SIGNALS</p> <p>(313) 224-1610 (313) 224-1304</p> <p>(313) 224-1315 (313) 407-4124 (313) 628-5641</p> <p>SIGNS REMOVALS & INSTALLATIONS</p> <p>(313) 628-2923 (313) 628-4966</p> <p>TV CABLES</p> <p>(313) 934-2600 (313) 934-4824</p>	<p>DTE, GAS COMPANY ONE ENERGY PLAZA-WCB1722 DETROIT, MI 48226 DAVE ORZEL orzeld2@teenergy.com</p> <p>DTE, ELECTRIC COMPANY ONE ENERGY PLAZA IGS GROUP, 5185B DETROIT, MI 48226 ROBIN O'CONNELL FAX EXPOSED OR DAMAGED FACILITIES</p> <p>DTE, ENERGY/MICHIGAN GAS DATA INTEGRITY GAS ONE ENERGY PLAZA-WCB1836 DETROIT, MI 48226 BARBARA SAUNDERS CELL EXPOSED OR DAMAGED FACILITIES</p> <p>HIGH PRESSURE GAS TRANSMISSION</p> <p>(313) 235-1135</p> <p>ELECTRIC POWER</p> <p>(313) 235-5632 (313) 235-9366 (313) 237-9564</p> <p>GAS MAINS</p> <p>(313) 235-5111 (313) 920-4488 (800) 477-4747</p>	<p>NOTE: CONTACT DTE TEN (10) WORKING DAYS PRIOR TO THE CONSTRUCTION START DATE TO COORDINATE ADJUSTMENTS FOR DETROIT EDISON MANHOLES.</p> <p>DETROIT THERMAL LLC 541 MADISON DETROIT, MI 48226 TOM MONRO FAX</p> <p>STEAM LINES</p> <p>(313) 921-1922 (313) 921-1972</p> <p>ELECTRICITY TRANSMISSION COMPANY</p> <p>(248) 946-3322</p> <p>ALL UNDERGROUND UTILITIES</p> <p>MISS DIG CALL THREE (3) WORKING DAYS BEFORE YOU DIG (800) 482-7171 OR 811</p> <p>WAYNE COUNTY TRAFFIC OFFICE 29900 GODDARD RD. DETROIT, MI 48242 PHONE</p> <p>(734) 955-2154</p>
---	--	---	--	--	--

CITY OF DETROIT
DEPARTMENT OF PUBLIC WORKS



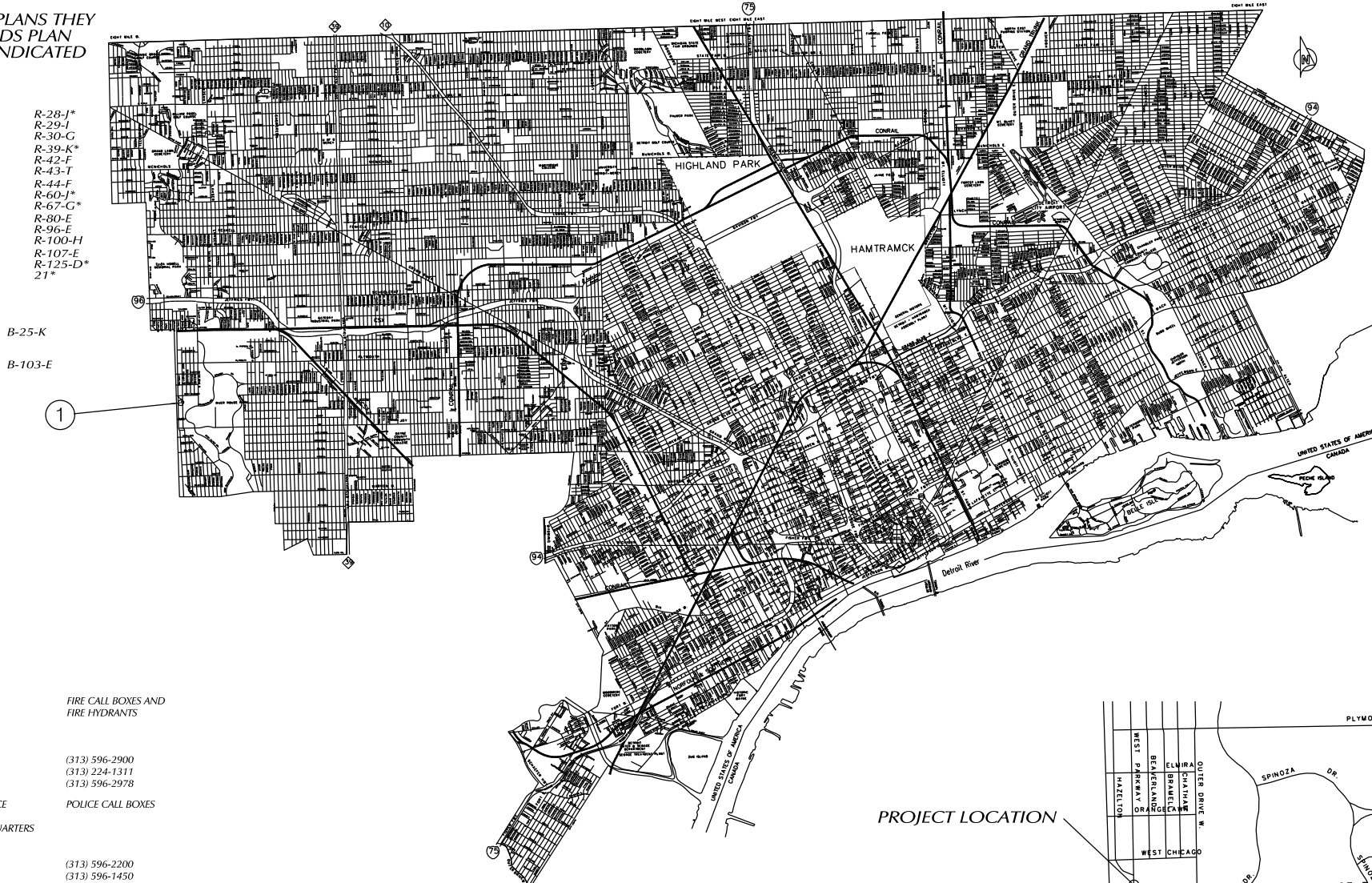
CONTROL SECTION

XXX XXXXX

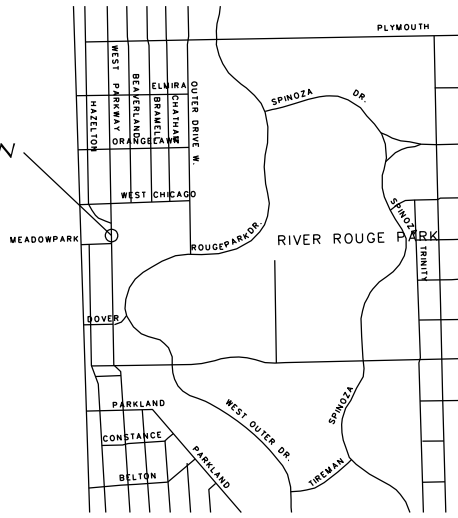
PROJECT JOB NO.

PW-6987

CULVERT REPLACEMENT PROJECT
REPLACEMENT OF THE W. PARKWAY CULVERT OVER
ASHCROFT - SHERWOOD DRAIN



PROJECT LOCATION



THE DESIGN OF THIS STRUCTURE IS BASED ON CURRENT AMERICAN ASSOCIATION OF THE STATE HIGHWAY AND TRANSPORTATION OFFICIALS, (AASHTO), FOR HIGHWAY BRIDGES HS 25 LOADING. LIVE LOAD PLUS IMPACT DEFLECTION DOES NOT EXCEED 1/800 OF THE SPAN LENGTH. THE LOAD FACTOR METHOD OF DESIGN WAS USED FOR THIS STRUCTURE.

EXCEPT WHERE OTHERWISE INDICATED ON THESE PLANS, THE PROPOSAL AND SUPPLEMENTAL SPECIFICATIONS CONTAINED HEREIN, ALL MATERIALS AND WORKMANSHIP SHALL BE ACCORDANCE WITH THE MICHIGAN DEPARTMENT OF TRANSPORTATION STANDARDS SPECIFICATIONS FOR CONSTRUCTION 2003 EDITION.

ALL EXPOSED CONCRETE CORNERS SHOWN SQUARE ON THE PLANS SHALL BE BELIEVE WITH 1/2" TRIANGULAR MOLDINGS EXCEPT AS OTHERWISE NOTED.

THE DESIGN OF THE STRUCTURAL MEMBERS IS BASED ON MATERIALS OF THE FOLLOWING GRADES AND STRESSES.

- CONCRETE: GRADE S2 f'c = 3,000 PSI
- CONCRETE: GRADE D f'c = 4,000 PSI
- STEEL REINFORCEMENT: fy = 60,000 PSI
- PRESTRESSED CONCRETE: f'c = 5,000 PSI

ALL DIMENSIONS ON THESE PLANS ARE IN INCHES EXCEPT AS NOTED.



DESIGNED BY LA		Date: 01/24/2018
Drawn WLW		
Checked By ---	Approved By ---	Job No: PW-6987

CONTRACT FOR:
REPLACEMENT OF THE W. PARKWAY CULVERT OVER
ASHCROFT - SHERWOOD DRAIN

LOCAL AUTHORITY APPROVAL
CITY OF DETROIT
DEPARTMENT OF PUBLIC WORKS
CITY ENGINEERING DIVISION

APPROVED BY _____ DATE _____

PREPARED UNDER THE SUPERVISION OF

REGISTERED PROFESSIONAL ENGINEER REGISTRATION NO. _____
CITY OF DETROIT ORGANIZATION
CITY ENGINEERING DIVISION, D.P.W.
2 WOODWARD AVE. SUITE 601 DETROIT MI 48216
ADDRESS

CONTROL SECTION NO.: XXX XXXXX
JOB NO.: PW-6987

BENCHMARKS

BM#1 ELEV = 616.82
CHISEL MARK 26.4 FEET
RIGHT OF STA 4+81

BM#2 ELEV = 605.44
CHISEL MARK SW COR.
W. PARKWAY & MEADOWPARK

WITNESSES

WITNESSES TO CP#2 EAST - W. PARKWAY, NORTH HAZELTON
55' FRONT LIGHTPOLE NORTH

CP#86 SW COR. W. PARKWAY & MEADOWPARK
5' N. FIRE HYDRANT
7' W. CURB LINE
30' S. SOUTH CURB LINE OF MEADOWPARK

REF PT COORDINATES

REF PT A X=5000.00
Y=5092.93

REF PT B X=5040.57
Y=4555.99

NOTES:

THE WORK COVERED BY THESE PLANS INCLUDED REMOVAL OF THE EXISTING METAL CORRUGATED STEEL CULVERT, CONSTRUCTION OF THE PROPOSED CULVERT & RETAINING WALL, PLACING RIPRAP TO THE LIMITS SHOWN, RE-WORK APPROACHES AND MAINTAINING TRAFFIC. ALL OTHER WORK NOT INCLUDED IN THESE PLANS THAT AREN'T PART OF THE PACKAGE.

THE STATIONING SHOWN IS UNIQUE TO THIS PROJECT AND CANNOT BE RELATED TO ANY OTHER EXISTING STATIONING.

W. PARKWAY TRAFFIC IS TO BE DETOURED OVER OTHER EXISTING ROADS.

THE CONTRACTOR SHALL LOCATE ALL ACTIVE UNDERGROUND UTILITIES PRIOR TO STARTING WORK AND SHALL CONDUCT HIS OPERATIONS IN SUCH A MANNER AS TO ENSURE THAT THOSE UTILITIES NOT REQUIRING RELOCATION WILL NOT BE DISTURBED.

WATER LEVEL IS SUBJECT TO CHANGE. THE CONTRACTOR IS RESPONSIBLE FOR MAKING A DETERMINATION OF WATER LEVELS THAT MAY EXIST DURING CONSTRUCTION.

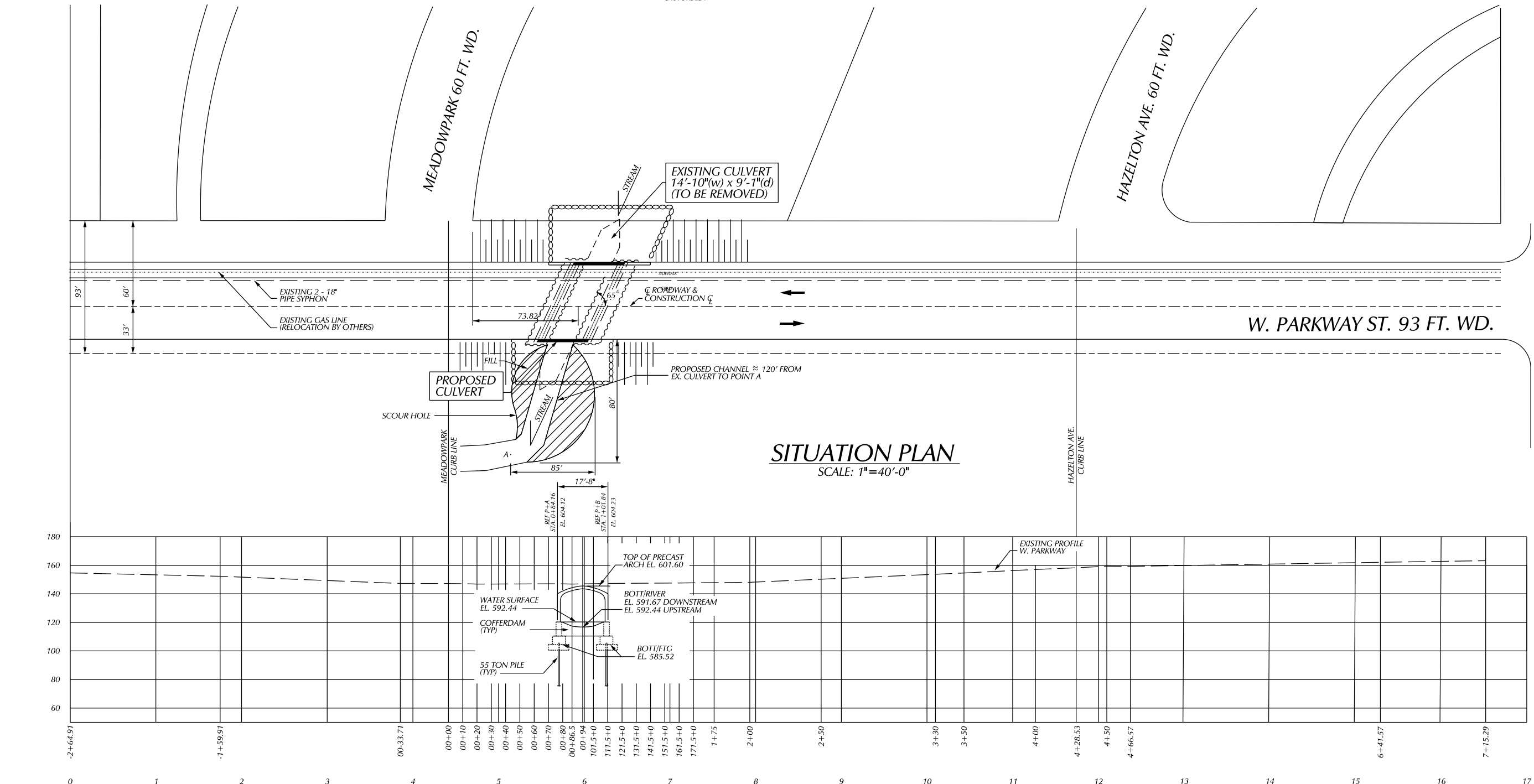
MEASURES SHALL BE TAKEN TO PREVENT DEBRIS FROM FALLING FROM THE STRUCTURES. IF DEBRIS FALLS INTO THE WATERWAY, IT SHALL BE REMOVED WITHIN 24 HOURS. SINCE DISTURBANCE OF THE WATERWAY BOTTOM MAY BE AS HARMFUL AS THE DEBRIS ITSELF, THE PREVENTIVE MEASURES MUST BE EFFECTIVE.

IMMEDIATELY AFTER THE CONSTRUCTION OF A CULVERT SLOPE IS COMPLETED, SLOPE PROTECTION AND SEEDING OR SODDING SHALL BE PLACED ON THE ADJACENT EMBANKMENT SLOPES.

PLANS REFER TO THE NAVD88 DATUM.

THE SURVEY INFORMATION ON THIS PROJECT WAS ACQUIRED BY THE CITY OF DETROIT DEPARTMENT OF PUBLIC WORKS, CITY ENGINEER DIVISION SURVEYOR.

SCALE	HORIZONTAL	VERTICAL	BOOK NO.	PG.	LEVEL	DATE



SITUATION PLAN
SCALE: 1"=40'-0"

PROPOSED PROFILE ALONG W. PARKWAY GRADE
VERT. SCALE: 1"=10'
HOR. SCALE: 1"=40'

W. CHICAGO AVE. 86 FT. WD.

PLAN	BY	CHECKED BY	APPROVED:
GRADE			
ESTIMATE			
FINAL	DATE	DATE	

CITY OF DETROIT
CITY ENGINEERING DIVISION - D.P.W.
BUREAU OF STREETS AND HIGHWAYS
FOR

WEST PARKWAY CULVERT OVER ASHCROFT - SHERWOOD DRAIN

GENERAL PLAN OF SITE

SHEET	2	OF	39	SHEETS
CONTRACT NO.	PW-6987			
ASSIGNMENT NO.				
DATE	01/24/2018			