

DATE	REVISIONS
	OLD MAP 3-30-15
6-25-58	Added Note 'X' 6-12-58 J.E. QUANTITY CHANGE FOR ALLEY RETURN REMOVAL SEE SHEET 22 FOR QUANTITIES

QUANTITIES	ESTIMATED
EXCAVATION CU. YDS.	761 713
NEW CURB LIN. FT.	105
PAVING 10'-8" 10 SQ. YDS.	4008 269
2" 10" UNIF. 30 YD	598
2" 18" UNIF. 25 YD	218
TEST CORES EA.	5
SIDEWALK 4" CONC. 30 FT.	2836
MANHOLES CONSTRUCT	12
CONSTR. CONC. RECONSTRUCT	1
ADJUST	
CONSTRUCT	
SEWER-12" LIN. FT.	10
SEWER-12" LIN. FT.	500

LOT NO.	CITY
2039.62	1019.81
232.88	116.44
TOTAL	1136.25

ASSIGNMENT NO.	DATE
225-CO-2	6-4-57

INDEX NO.	INDEXED
77	
117	

CONTRACT NO. P.W. 3249 F
STREET PAVING PLAN
CITY OF DETROIT
 DEPARTMENT OF PUBLIC WORKS - CITY ENGINEERS OFFICE

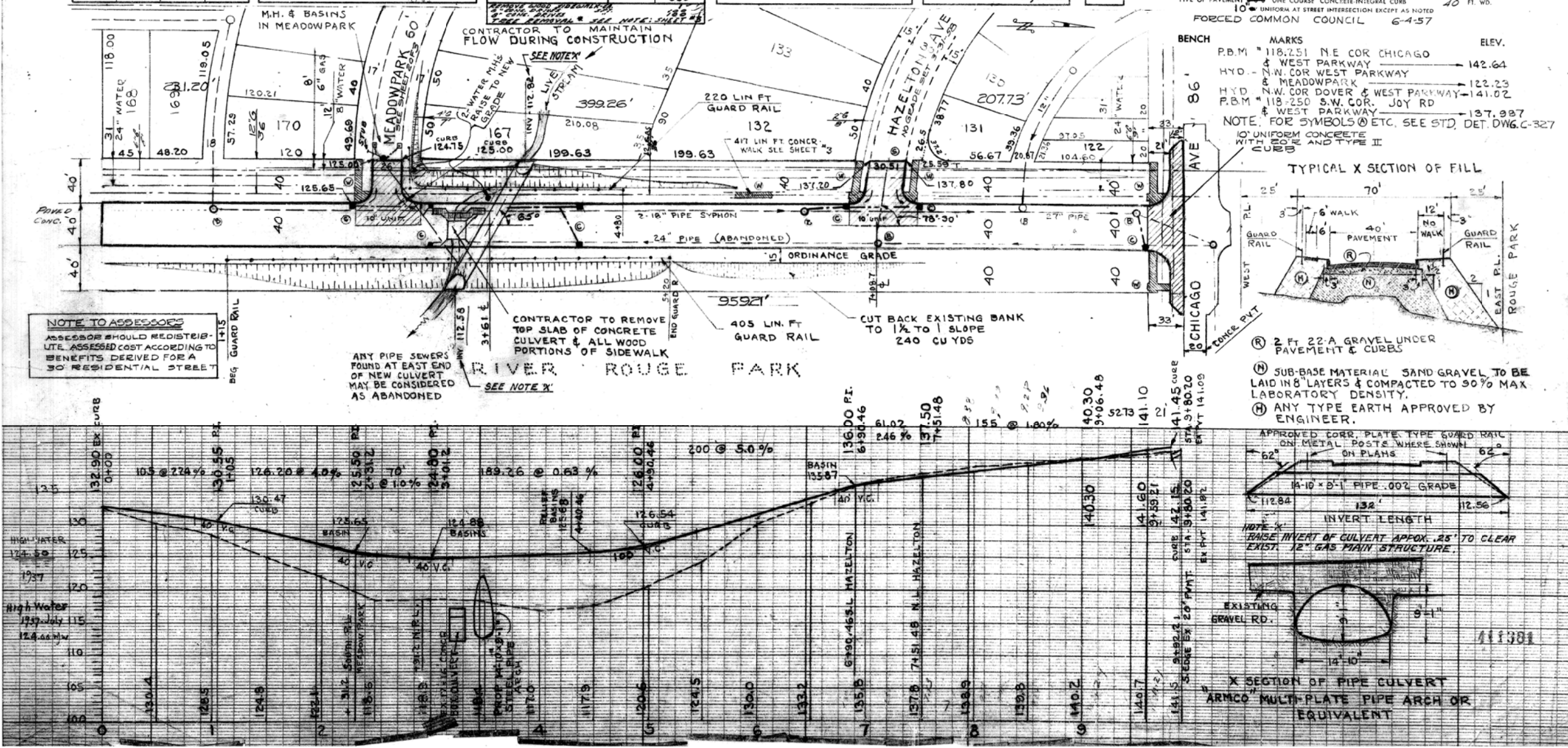
NAME OF STREET **WEST PARKWAY**

FROM **959.21' S. OF S.L. CHICAGO**

TO **33 N. OF S.L. CHICAGO**

TYPE OF PAVEMENT **10'-8" 10 ONE COURSE CONCRETE INTEGRAL CURB 40 FT. WD.**

FORCED COMMON COUNCIL 6-4-57



NOTE TO ASSESSORS
 ASSESSOR SHOULD REDISTRIBUTE ASSESSED COST ACCORDING TO BENEFITS DERIVED FOR A 30 RESIDENTIAL STREET

TYPICAL X SECTION OF FILL

① 2 FT 22-A GRAVEL UNDER PAVEMENT & CURBS

② SUB-BASE MATERIAL SAND GRAVEL TO BE LAID IN 8" LAYERS & COMPACTED TO 90% MAX. LABORATORY DENSITY.

③ ANY TYPE EARTH APPROVED BY ENGINEER.

X SECTION OF PIPE CULVERT
 ARMCO MULTI-PLATE PIPE ARCH OR EQUIVALENT

APPROVED CORR. PLATE TYPE GUARD RAIL ON METAL POSTS WHERE SHOWN ON PLANS

14'-10" x 8'-1" PIPE .002 GRADE

INVERT LENGTH

NOTE: BASE INVERT OF CULVERT APPROX. .25' TO CLEAR EXIST. 12" GAS MAIN STRUCTURE.

EXISTING

FOR INFORMATION ONLY

DO NOT WORK FROM THIS SHEET. THE INFORMATION SHOWN HERE IS FOR REFERENCE ONLY. NO PAY ITEMS ARE SHOWN.

DESCRIPTION	REVISIONS	OR CHECK APPROVATE	FINAL	DATE
PLAN				
GRADE				
ESTIMATE				

CITY OF DETROIT
 CITY ENGINEERING DIVISION - D.P.W.
 BUREAUS OF STREETS AND HIGHWAYS
 FOR

WEST PARKWAY CULVERT OVER ROUGE RIVER

EXISTING STREET PAVING PLAN

SHEET NO.	OF SHEETS
1	3