

| DATE | REVISIONS |
|------|----------------------------|
| | OLD MAP 3-20-65 |
| | Added Sec. AA 6-12-58 J.E. |

| SUPPLEMENTARY DETAILS | | | |
|-----------------------|-------|--------|--------|
| C-325 | C-324 | C-733 | C-928 |
| C-328A | C-585 | C-739 | C-1608 |
| C-327 | C-586 | C-739A | C-1783 |
| C-330 | C-587 | C-739B | |

BEFORE STARTING CONSTRUCTION
CONTRACTOR MUST CHECK WITH UTILITIES FOR LOCATIONS OF EXISTING STRUCTURES WHETHER OR NOT INDICATED ON PLANS.

SCALE

LOTS & ALLEYS

STREET WIDTH

VERTICAL

DRAINAGE COMPLETED

PAVING COMPLETED C.C. 8-4-59

| QUANTITIES | ESTIMATED | |
|---------------------|-----------|-----------|
| | LOTS | CITY |
| EXCAVATION CU. YDS. | | |
| NEW CURS LIN. FT. | | |
| PAVING SQ. YDS. | | |
| TEST CORES | | |
| SIDWALK | | |
| MANHOLES | ADJUST | CONSTRUCT |
| ASINS | ADJUST | CONSTRUCT |
| SEWER-12" LIN. FT. | | |

SECTION NO. FCC DATE 6-4-57

ASSIGNMENT NO. GROUP NO.

BOOK NO. PG. LEVEL DATE

LOT 21 LENGTH CITY 21 LENGTH TOTAL LENGTH DATE OF DRAW

58-4 ✓

INDEX NO. 77

TOPO NO. 117

INDEXED

MADE BY: J. Wallace

CHECKED BY: J. Wallace

ESTIMATE: J. Wallace

SEWER APPROVED: J. Wallace

FINAL CHECKS: J. Wallace

APPROVED: J. Wallace

CITY ENGINEER

INDEX NO. 77

TOPO NO. 117

INDEXED

CONTRACT NO. P.W. 3249 F

STREET PAVING PLAN
CITY OF DETROIT

DEPARTMENT OF PUBLIC WORKS - CITY ENGINEERS OFFICE

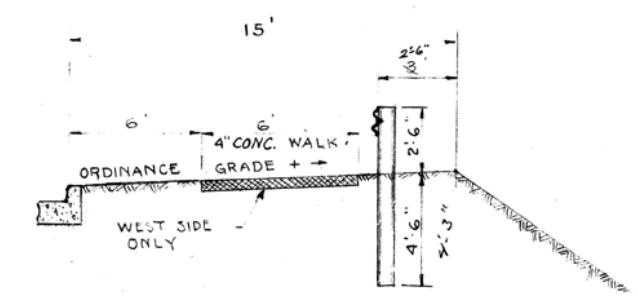
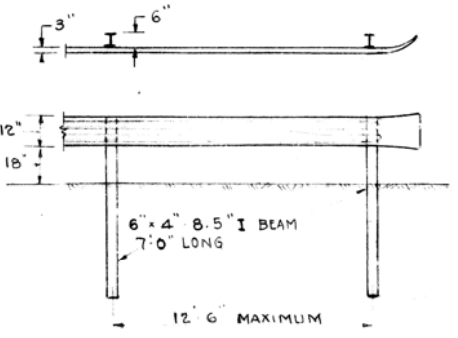
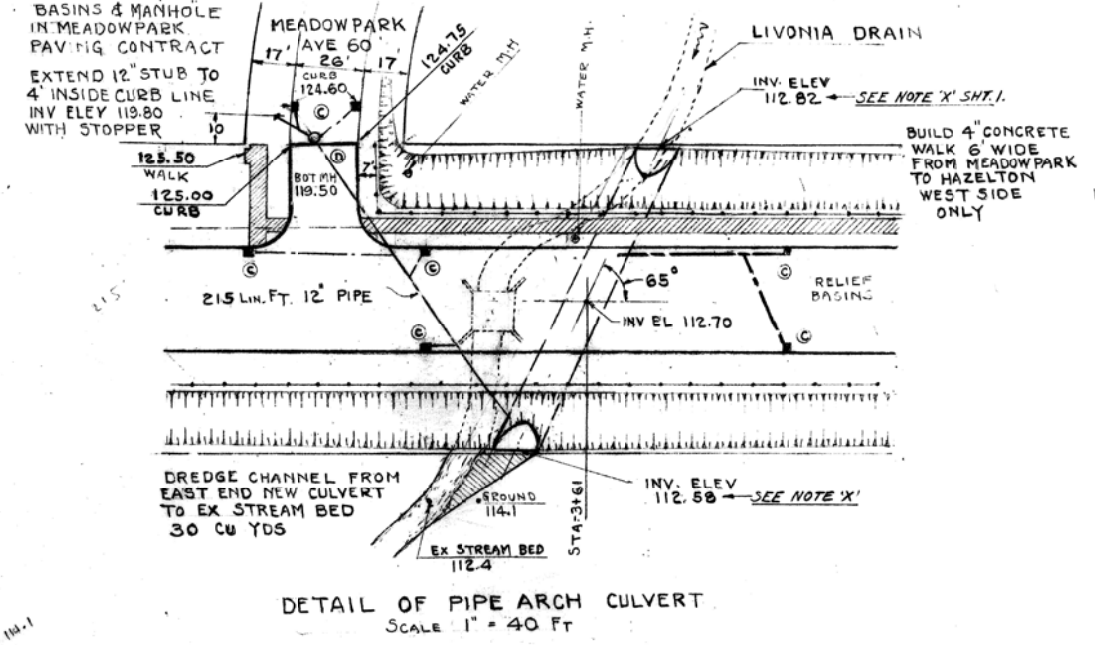
NAME OF STREET: WEST PARKWAY

FROM 959.2' S OF S.L. CHICAGO TO 33' N OF S.L. CHICAGO

TYPE OF PAVEMENT: 8 & 8 ONE COURSE CONCRETE INTEGRAL CURB 8" UNIFORM AT STREET INTERSECTION EXCEPT AS NOTED

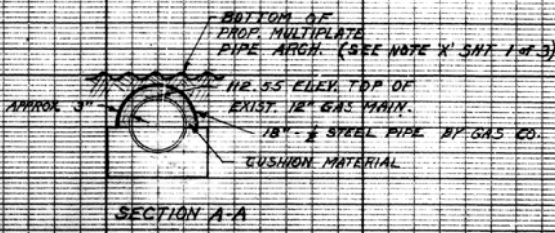
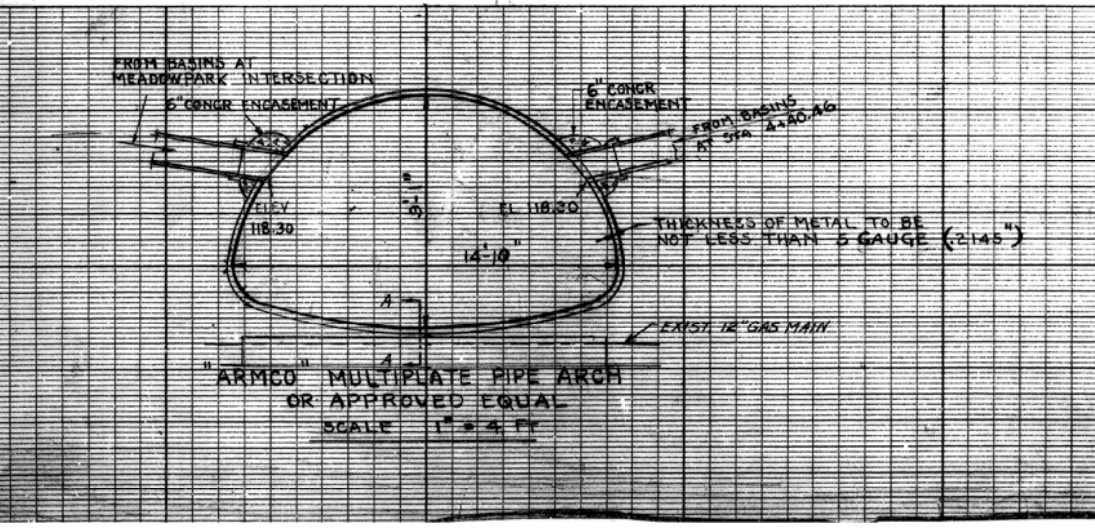
FORCED COMMON COUNCIL 6-4-57

BENCH MARKS ELEV.



FOR LOTS ONLY

| STA. | SIZE | NO. |
|------|---------|-----|
| 0173 | 6" ASH | 1 |
| 0177 | 6" ASH | 2 |
| 0185 | 6" ASH | 1 |
| 2110 | 8" ASH | 1 |
| 2116 | 14" OAK | 1 |
| 2127 | 18" OAK | 1 |
| 2153 | 18" OAK | 1 |
| 2177 | 8" ASH | 1 |
| 2185 | 8" ASH | 1 |
| 3122 | 8" ASH | 2 |
| 3128 | 8" ASH | 1 |
| 3170 | 8" ASH | 1 |
| 3176 | 8" ASH | 1 |
| 3186 | 8" ASH | 1 |
| 3196 | 8" ASH | 1 |
| 3200 | 8" ASH | 1 |
| 3202 | 8" ASH | 1 |
| 4117 | 8" ASH | 2 |
| 4121 | 8" ASH | 1 |
| 4136 | 8" ASH | 1 |
| 4156 | 8" ASH | 1 |
| 4187 | 12" ASH | 1 |
| 4187 | 8" ASH | 1 |
| 4188 | 8" ASH | 1 |
| 4190 | 8" ASH | 2 |
| 4198 | 14" ASH | 1 |
| 4198 | 8" ASH | 1 |
| 4198 | 20" ASH | 1 |
| 5128 | 8" ASH | 1 |
| 5130 | 8" ASH | 1 |
| 5147 | 24" ASH | 1 |



411392

EXISTING

FOR INFORMATION ONLY

DO NOT WORK FROM THIS SHEET. THE INFORMATION SHOWN HERE IS FOR REFERENCE ONLY. NO PAY ITEMS ARE SHOWN.