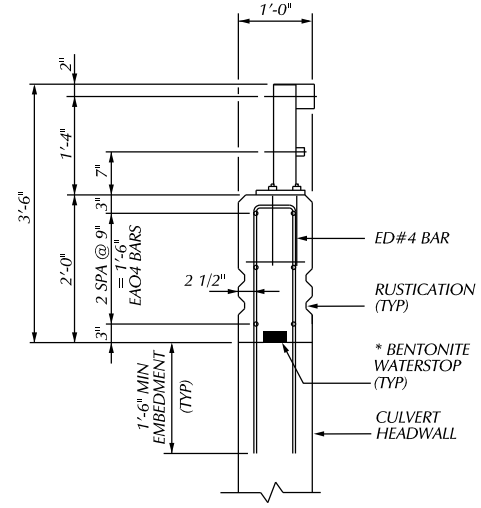
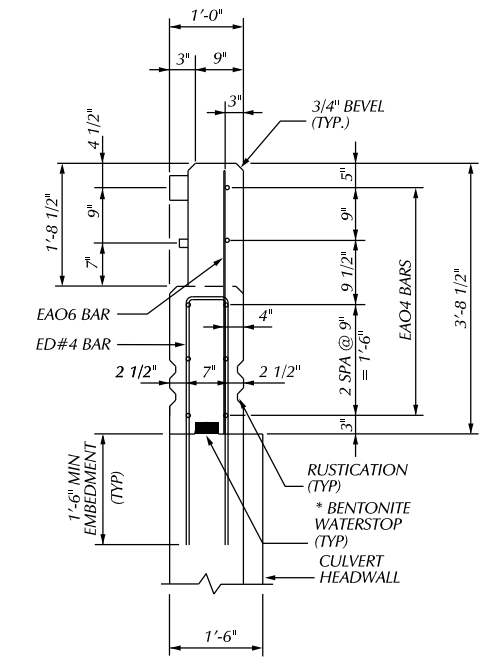


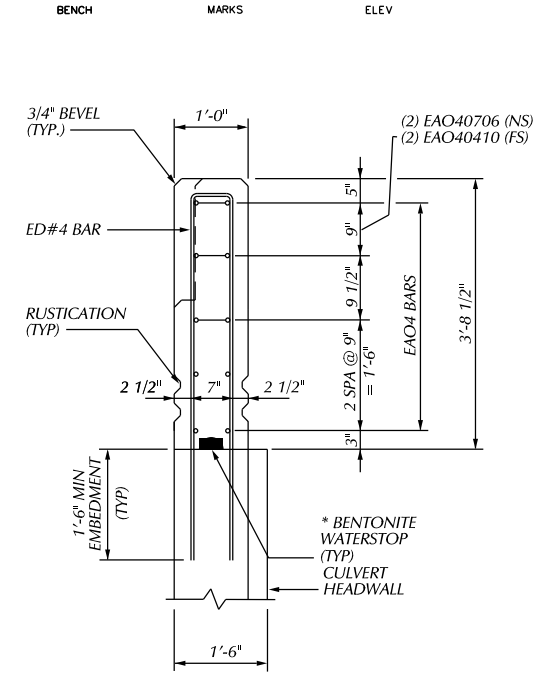
**PLAN - CULVERT END WALL DETAIL**  
 NS - DENOTES NEAR SIDE  
 FS - DENOTES FAR SIDE



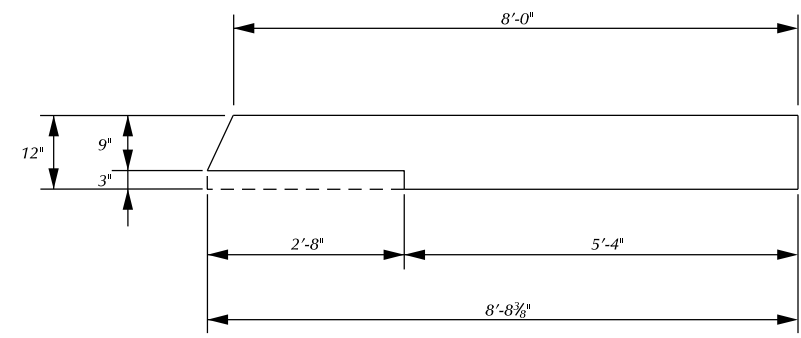
**TYPICAL CULVERT RAILING SECTION**



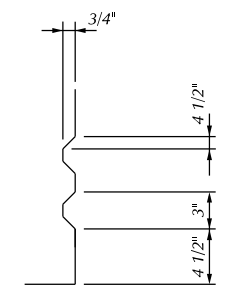
**SECTION AT CULVERT END WALL**  
 (TUBE CONNECTION AREA)



**SECTION AT CULVERT END WALL**  
 (FULL CONCRETE AREA)



**PLAN - CULVERT END WALL**  
 SEE PLAN OF RAILING FOR DETAILS  
 SHEET # \_\_\_\_\_



**RUSTICATION DETAIL**  
 (SHOWING RUSTICATION)

**NOTES:**  
 \* BENTONITE WATERSTOP SHALL NOT BE PAID SEPARATELY BUT ARE INCLUDED IN PAYMENT FOR 'BRIDGE RAILING, AESTHETIC PARAPET TUBE-MODIFIED'

PLAN		BY	CHECKED BY	APPROVED:	CITY OF DETROIT CITY ENGINEERING DIVISION - D.P.W. BUREAUS OF STREETS AND HIGHWAYS FOR	WEST PARKWAY CULVERT OVER ASHCROFT - SHERWOOD DRAIN	SHEET	OF	SHEETS	
GRADE							CONTRACT			
ESTIMATE							NO.			
DESCRIPTION		DR	CHK	DATE			ASSIGNMENT			
REVISIONS		FINAL	*****	*****			NO.			
							DATE			