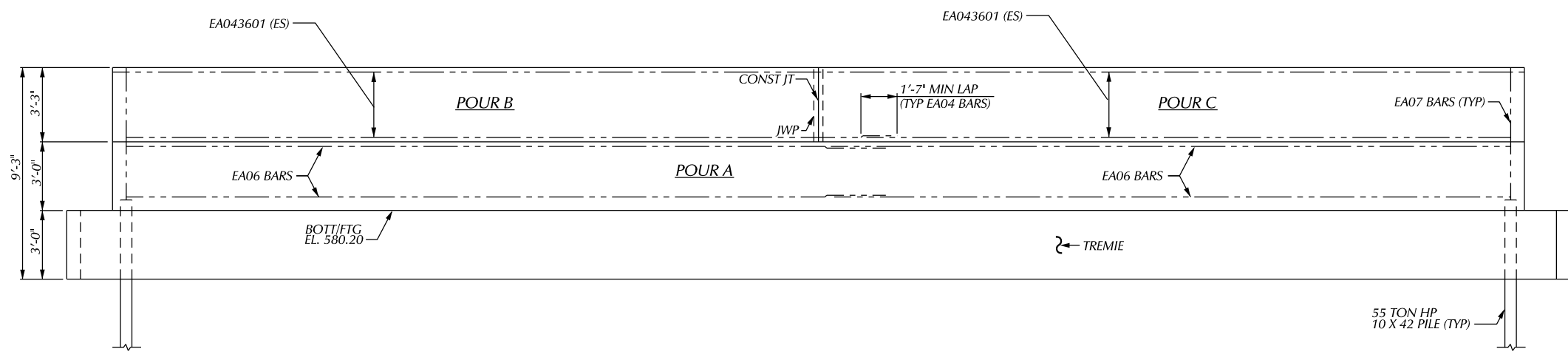


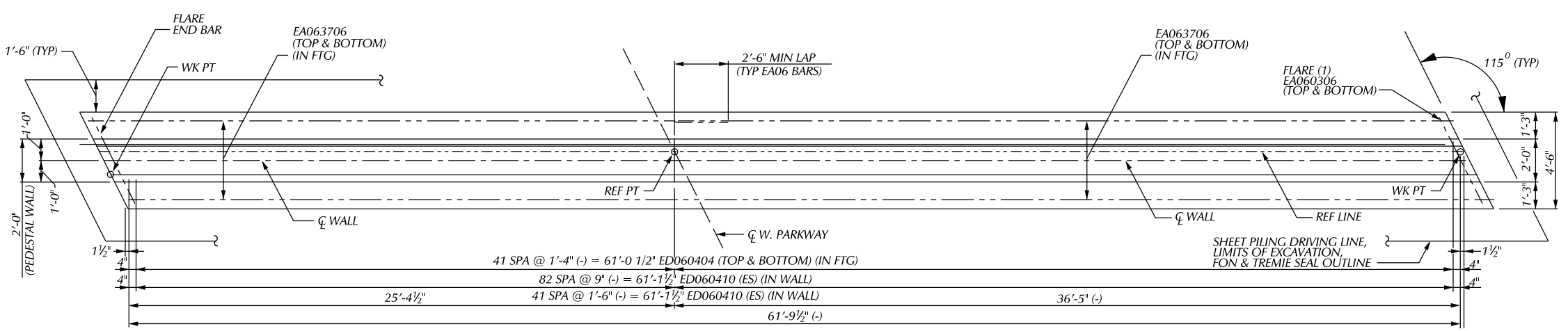
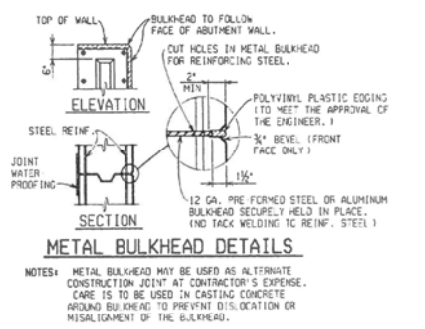
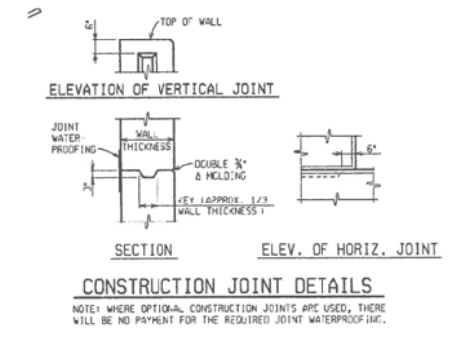
PLAN OF PEDESTAL WALL

MISCELLANEOUS QUANTITIES			
WALL A	WALL B	TOTAL	
36	36	158 CYD	CONC. GRADE T
—	—	171 CYD	SUBSTRUCTURE CONC.
—	—	14610 LB	REINFORCEMENT STEEL, EPOXY COATED
28	28	56 SFT	JOINT WATERPROOFING

SUBSTRUCTURE CONCRETE QUANTITIES		
POUR	FTG A	FTG B
A	32.2	32.2
B	18	18
C	17.3	17.3
D	18	18



ELEVATION - PEDESTAL WALL



PLAN OF FOOTINGS
(FTG A SHOWN, FTG B OPPOSITE)

NOTES:
 THE SUBSTRUCTURE DESIGN IS BASED ON A FACTORED MAXIMUM VERTICAL LOAD OF 20 KIPS/FT AND A HORIZONTAL LOAD OF 8 KIPS/FT.
 JWP DENOTES JOINT WATERPROOFING.
 FOR PILE QUANTITIES, LAYOUT AND NOTES, SEE SHEET ____.
 LOW TEMPERATURE PROTECTION OF CONCRETE SHALL BE APPLIED ACCORDING TO SECTION 706.03J OF THE STANDARD SPECIFICATIONS FOR CONSTRUCTION.
 LOW TEMPERATURE PROTECTION OF CONCRETE WILL NOT PAID FOR SEPARATELY BUT WILL INCLUDED IN THE BID ITEM FOR "SUBSTRUCTURE CONC" AND "CONCRETE GRADE T".

PLAN	BY	CHECKED BY	APPROVED:	CITY OF DETROIT CITY ENGINEERING DIVISION - D.P.W. BUREAUS OF STREETS AND HIGHWAYS FOR	WEST PARKWAY CULVERT OVER ROUGE RIVER	SHEET ____ OF ____ SHEETS
GRADE						CONTRACT NO.
ESTIMATE						ASSIGNMENT NO.
DESCRIPTION	OR	NO	DATE			DATE
REVISIONS	FINAL	*****	*****			