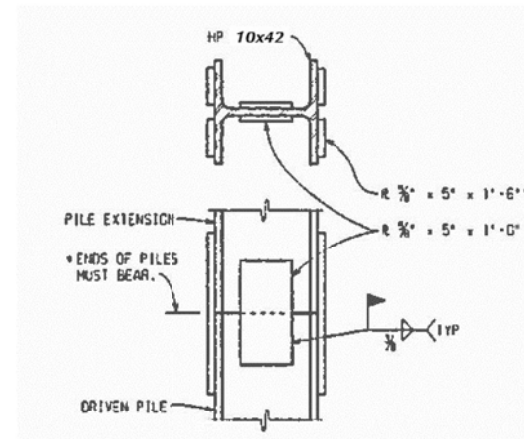
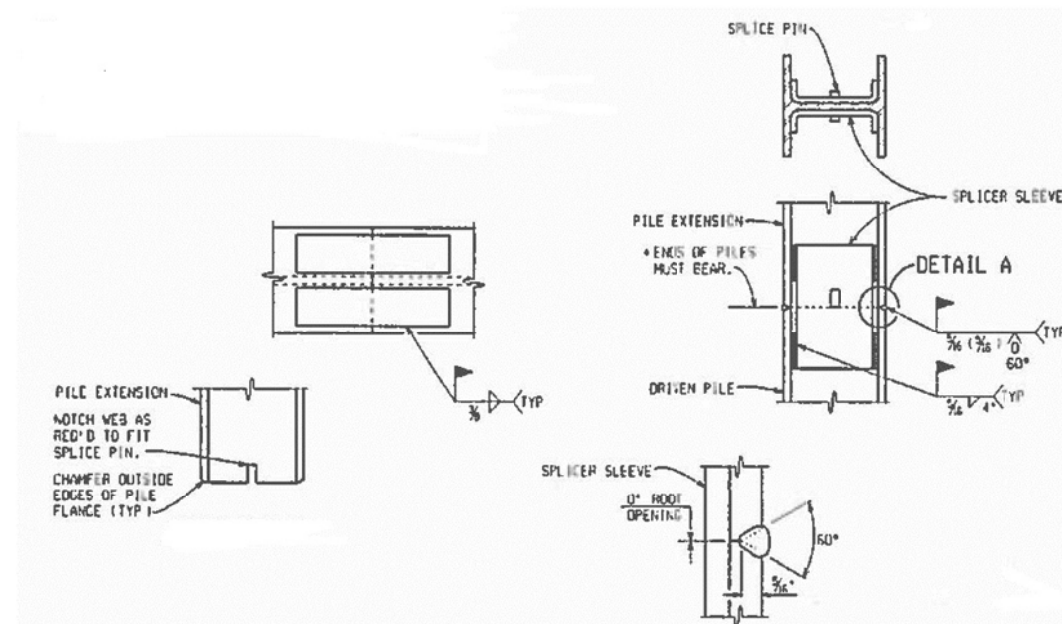


FTG A FTG B
PILE LAYOUT



SPlice DETAILS

* SET PILE EXTENSION IN PLACE WITH SPlice PLATES ATTACHED TAP SEVERAL TIMES WITH THE HAMMER TO IMPROVE BEARING CONTACT, THEN COMPLETE WELDING OF PLATES TO THE LOWER SECTION.



NOTCH DETAIL

DETAIL A

ALTERNATE SPlice DETAILS

* SET PILE EXTENSION IN PLACE WITH SPlice PLATES ATTACHED TAP SEVERAL TIMES WITH THE HAMMER TO IMPROVE BEARING CONTACT, THEN COMPLETE WELDING OF PLATES TO THE LOWER SECTION.

55 TON STEEL "H" PILES

LOCATION	PILE TYPE	NUMBER OF PILES	ESTIMATED LENGTH FURNISHED & DRIVEN		CUT-OFF ELEV.
			EACH LFT	TOTAL LFT	
FTG A	TEST	2	50	100	669.00
	VERTICAL	18	40	720	669.00
FTG B	TEST	2	50	100	669.00
	VERTICAL	18	40	720	669.00
TOTAL				1640	

MISCELLANEOUS QUANTITIES

- 1 LS PILE DRIVING EQUIPMENT, FURN
- 1640 FT PILE STEEL, FURN AND DRIVEN, 10 INCH
- 4 EA TEST PILE STEEL 10 INCH

NOTES:

- H - DENOTES VERTICAL PILES.
- (H) - DENOTES VERTICAL TEST PILES.
- ALL PILES SHALL BE DRIVEN TO A MINIMUM BEARING CAPACITY OF 55 TONS.
- STEEL PILES SHALL BE HP 10 X 42.
- ESTIMATED PILE PENETRATIONS HAVE BEEN DETERMINED BY USE OF THE STATIC FORMULA.
- THE PILE DRIVING FORMULAS IN THE STANDARD SPECIFICATIONS ARE NOT TO BE USED TO DETERMINE BATTERED PILE CAPACITY. BATTERED PILES ARE TO BE DRIVEN TO THE ELEVATION ESTABLISHED FOR VERTICAL FILES.
- THE USE OF VIBRATORY HAMMERS FOR INSTALLING H-PILES SHALL NOT BE ALLOWED.

PLAN	BY	CHECKED BY	APPROVED:
GRADE			ENGINEER OF STREETS
ESTIMATE			
DESCRIPTION	DR	CHK	DATE
REVISIONS	FINAL	*****	*****

CITY OF DETROIT
CITY ENGINEERING DIVISION - D.P.W.
BUREAUS OF STREETS AND HIGHWAYS
FOR

WEST PARKWAY CULVERT OVER ROUGE RIVER

CULVERT H PILE DETAILS

SHEET OF SHEETS
CONTRACT NO.
ASSIGNMENT NO.
DATE