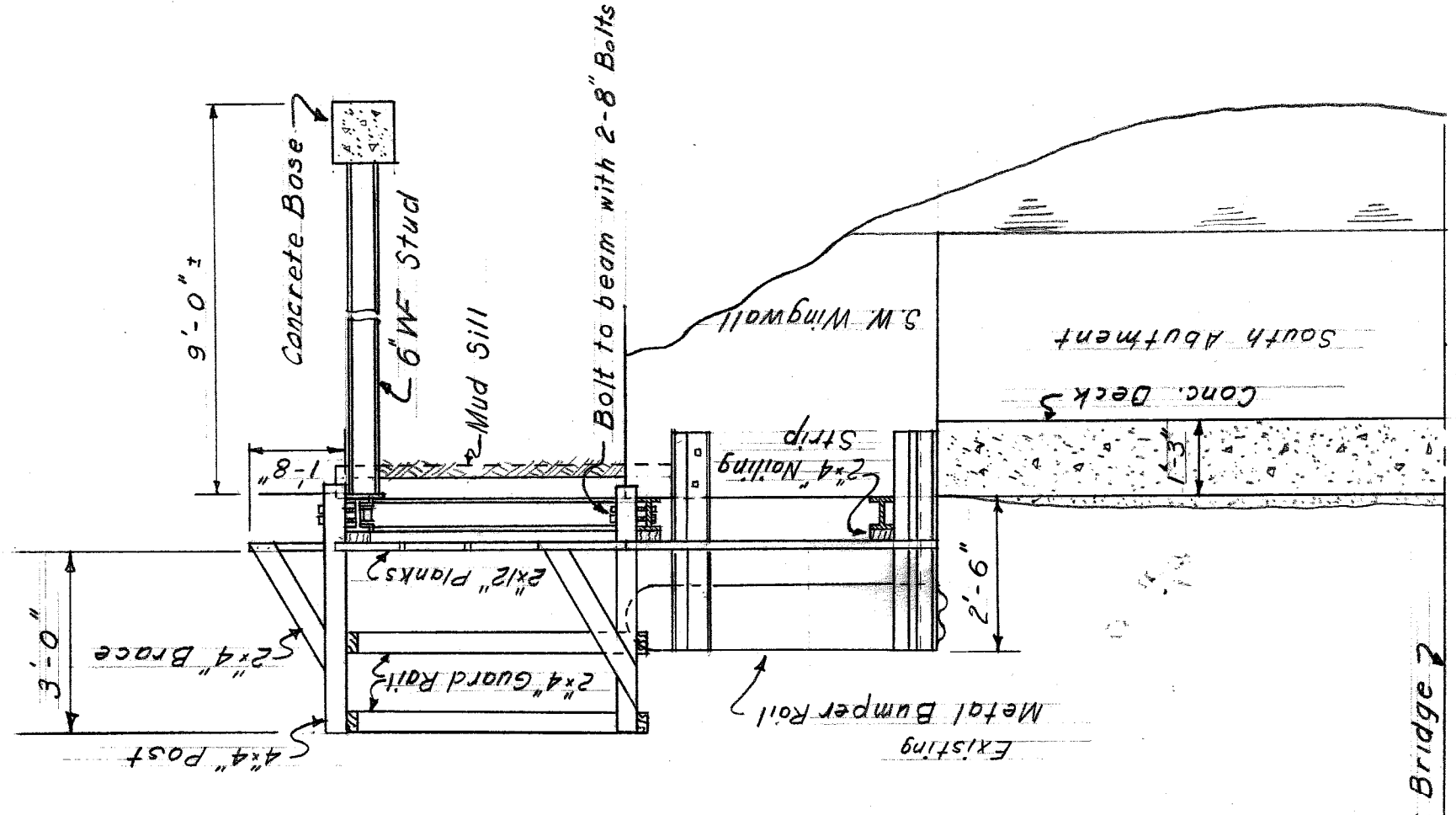


GENERAL PLAN OF BRIDGE

Scale: $3/8" = 1'-0"$

General Notes:
 All timber to be surface treated with "Penta" wood preservative or an approved equal.
 All timber fastenings to be with $5/8"$ screws except where otherwise noted.
 Spacing of handrail posts shall not be more than 6'.
 The amount of splice material may vary depending upon the number of field splices required.

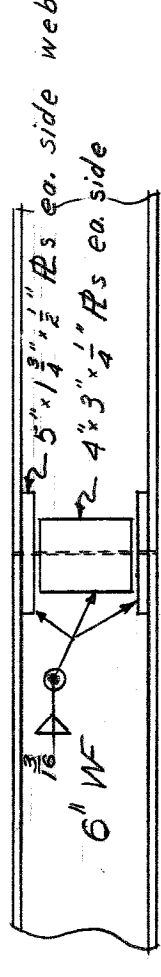


HALF-SECTION THROUGH BRIDGE LOOKING SOUTH

Scale: $3/8" = 1'-0"$

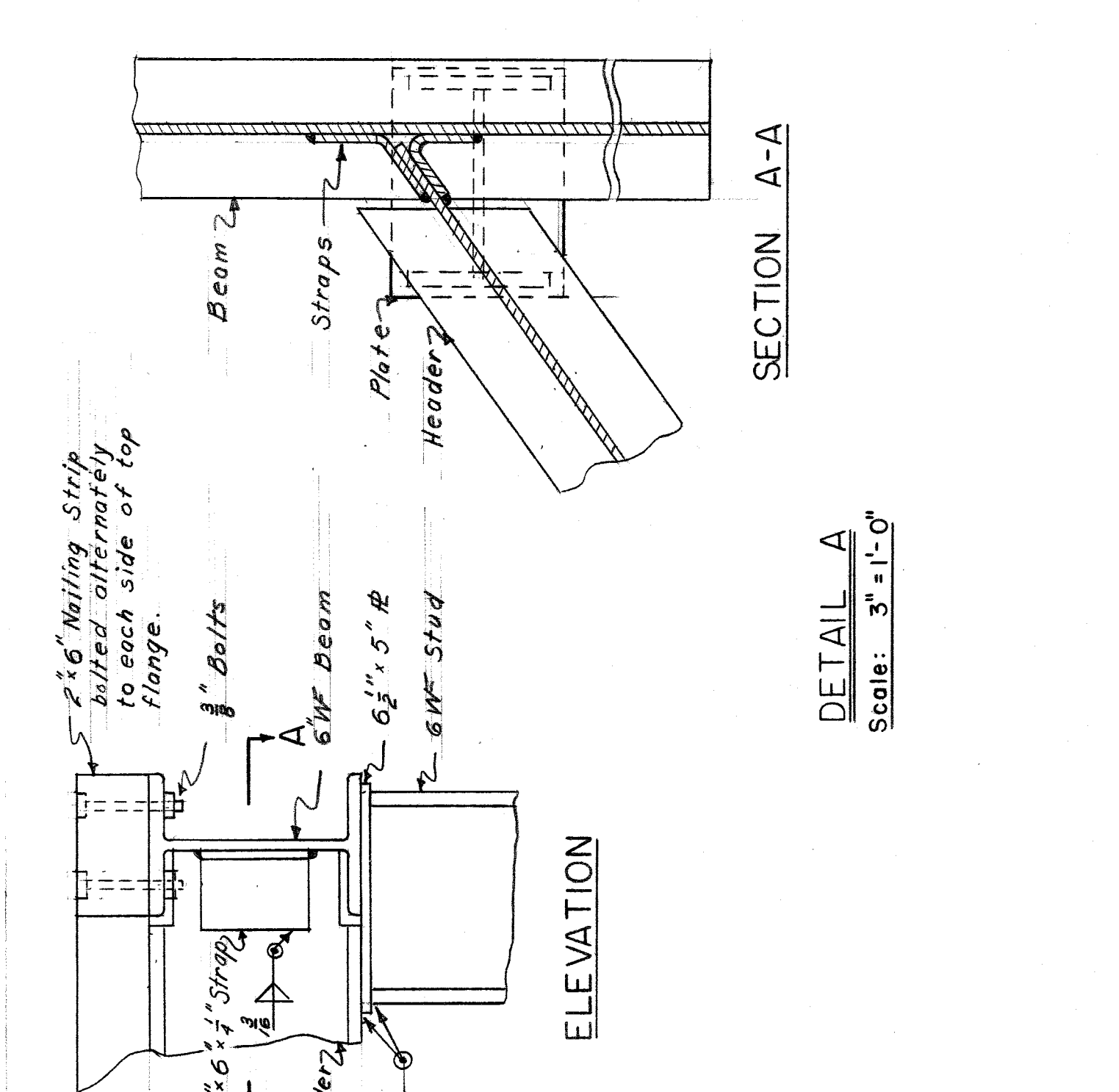
DETAIL AT MUD SILL

Scale: $3/4" = 1'-0"$



SPLICE DETAIL

Scale: $1/2" = 1'-0"$



DETAIL A

Scale: $3" = 1'-0"$

BILL OF MATERIAL

TIMBER REQ'D		STEEL REQ'D		Total	
No.	Unit	Size	Description	Wt. in Lb.	FBM
260	Lin.-Ft.	2"x12"	Sidewalk Planks		520
100	Do.	2"x4"	Handrails		66 2/3
9	Ea.	4"x4"x48"	Handrail Posts		48
95	Lim.-Ft.	2"x4"x42"	Nailing Strip, Beams		21
2	Ea.	4"x8"	Braces		95
2	Ea.	6"x12"x74"	Mud Sills		24
2	Ea.	2"x12"x74"	Backwalls		74
24	Do.	2"x12"x74"	Backwalls		24 3/8
Total				873 1/2	

TIMBER REQ'D		STEEL REQ'D		Total	
No.	Unit	Size	Description	Wt. in Lb.	FBM
95	Lim.-Ft.	6WF	Floor Beams	1900	
2	Ea.	6WF 9'	Columns	360	
*16	"	5 1/2" x 3/4"	Flange Splice Plate	19.9	
*8	"	4" x 3/4"	Web Splice Plate	6.8	
8	"	6" x 3/4"	Web Strap	10.2	
2	"	6 1/2" x 5 1/2"	Column Plate	9.2	
Total				2306.1	

HARDWARE REQ'D		CONCRETE REQ'D	
No.	Unit	Size	Description
8	Ea.	1/4" x 4"	Cinch Anchor
27	"	1/4" x 4"	Bolt w/nut & washer
18	"	1/4" x 6"	Bolt " "
8	"	1/4" x 8"	Drift Pin
200	"	1/2" x 3"	Lag Screw
Total			
No.	Unit	Size	Description
2	Ea.	1' x 1' x 1'	Concrete Base

* Amount of material billed is for 4 splices.
 See General Notes.

NO.	DESCRIPTION	REV.	DATE

REVISIONS LOCATED BY COORDINATES ON SHEET

APRAGO STREET, 23
MR. KELLY, 76 E-8725
DETROIT, MICH. 10

Beason



Vertical text on the right edge of the page, including project details and a signature.