

MICHIGAN  
 STATE HIGHWAY DEPARTMENT  
 CHARLES M. ZIEGLER  
 STATE HIGHWAY COMMISSIONER

PLANS OF REPAIRS TO FENDERS  
 AT  
 W. FORT STREET BASCULE BRIDGE  
 OVER THE ROUGE RIVER

STATE PROJECT NO. BI of 82-22-2

CITY OF DETROIT  
 WAYNE COUNTY

PLAN INDEX

SHEET NO.	DESCRIPTION
1	TITLE SHEET
2	BILL OF MATERIAL
3	REPAIRS TO FENDERS

GENERAL NOTES

EXCEPT WHERE OTHERWISE INDICATED ON THESE PLANS OR IN THE PROPOSAL AND SUPPLEMENTAL SPECIFICATIONS CONTAINED THEREIN, ALL MATERIALS AND WORKMANSHIP SHALL BE IN ACCORDANCE WITH MICHIGAN STATE HIGHWAY DEPARTMENT'S STANDARD SPECIFICATIONS FOR ROAD AND BRIDGE CONSTRUCTION, 1942 EDITION.

PILE CUT-OFF AT ELEVATION 578.83 - TOP OF PITWALL.

NOTE  
 TEMPORARY DETOUR TO BE USED FOR SHORT PERIOD NOT EXCEEDING ONE WEEK - SEE SUPPLEMENTAL SPECIFICATIONS



STATE HIGHWAY DEPARTMENT APPROVAL

APPROVED CHARLES M. ZIEGLER  
 STATE HIGHWAY COMMISSIONER

BY *H. R. Pappas* 9/5/49  
 DEPUTY COMMISSIONER - CHIEF ENGINEER DATE

BRIDGE DIVISION APPROVAL

CHECKED *H. R. Pappas* 9-1-49  
 CHIEF BRIDGE DRAFTSMAN DATE

RECOMMENDED FOR APPROVAL *H. R. Pappas* 9-1-49  
 ENGINEER OF BRIDGE DESIGN DATE

APPROVED *S. M. Foster* 9-1-49  
 BRIDGE ENGINEER DATE

REVISIONS	DRAWN BY	CHECKED BY	DATE	APPROVED
	V. R. B.	M. K.	JUNE 29 '49	<i>[Signature]</i>
	CORRECT	<i>[Signature]</i>		<i>[Signature]</i>
	ENGINEER OF STRUCTURAL DESIGN			COUNTY HIGHWAY ENGINEER

BOARD OF  
 WAYNE COUNTY ROAD COMMISSIONERS  
 DETROIT, MICHIGAN

MICHAEL J. O'BRIEN  
 JOHN P. O'HARA  
 CHARLES L. WILSON

TITLE SHEET  
 W. FORT STREET BASCULE BRIDGE  
 OVER ROUGE RIVER

STATE FILE	COUNTY JOB
BI of 82-22-2	571
ISSUE NO.	SHEET NO.
1	1
DATE	
9-1-49	

Job 571 - FORT B110

ITEM	UNIT	DATE	PLAN EXTRAS		
			DESCRIPTION	UNIT	QUANTITY ESTIMATE
1	REMOVING OLD 35-FOOT PILES OVER TUNNELS	EACH	23		
2	REMOVING OLD TIMBER WALES	LUMP SUM			
3	RECONDITIONING SINGLE TIMBER PILES	EACH	65		
4	RECONDITIONING INTERIOR PILE CLUMPS	EACH	4		
5	NEW 35-FOOT PILES OVER TUNNELS - FURNISHED AND DRIVEN	EACH	23		
6	12"x12" TIMBER WALES - FURNISHED AND PLACED	M.B.M.	17.90		
7	RECONDITIONING FENDER PLATES ON CORNER CLUMPS	EACH	4		
8	MISCELLANEOUS HARDWARE	LBS.	9040		
9	4" TOOTHED RING TIMBER CONNECTORS - FURNISHED AND INSTALLED	EACH	200		

FORT-B111

STATE FILE	BRIDGE ROAD	BI of 82-22-2
------------	-------------	---------------

REVISIONS

DRAWN BY W.G.L.	CHECKED BY M.K.	DATE AUG. 16 '49	APPROVED <i>[Signature]</i> ENGINEER OF BRIDGES AND STRUCTURES
CORRECT	<i>[Signature]</i>	APPROVED <i>[Signature]</i> COUNTY HIGHWAY ENGINEER	

BOARD OF  
**WAYNE COUNTY ROAD COMMISSIONERS**  
DETROIT, MICHIGAN

MICHAEL J. O'BRIEN      JOHN P. O'HARA      CHARLES L. WILSON

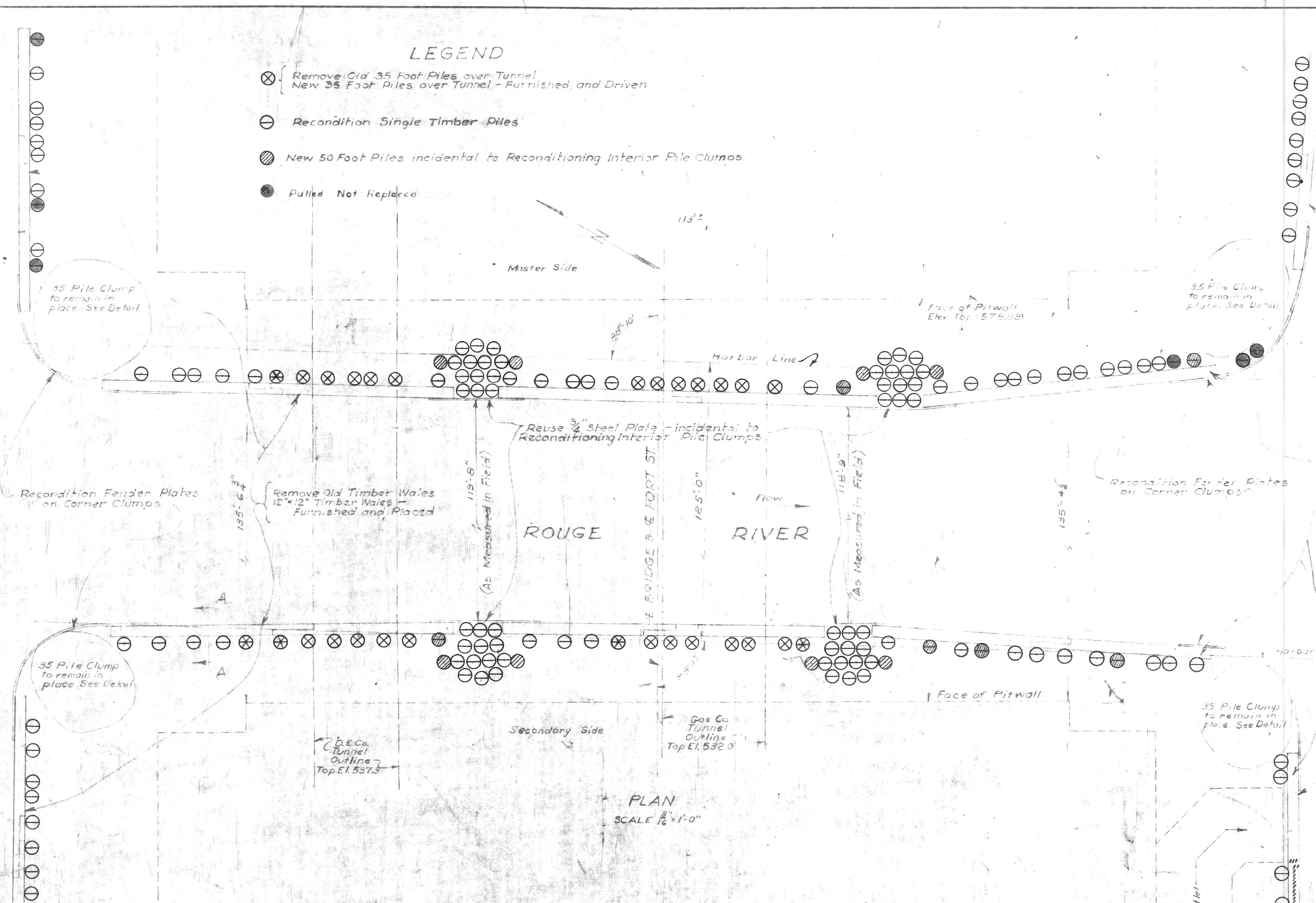
<b>BILL OF MATERIAL</b>		STATE PROJECT	COUNTY JOB
W. FORT STREET BASCULE BRIDGE			571
OVER ROUGE RIVER		ISSUE NO. 1	SHEET NO. 2
		DATE 8-16-49	

Job 571 - FORT B111

FED. ROAD DIST. NO.	STATE	PROJECT NO.	FISCAL YEAR	SHEET NO.	TOTAL SHEETS
ROUTE	STATE PROJECT	COUNTY	TOWNSHIP	SHEET NO.	TOTAL SHEETS

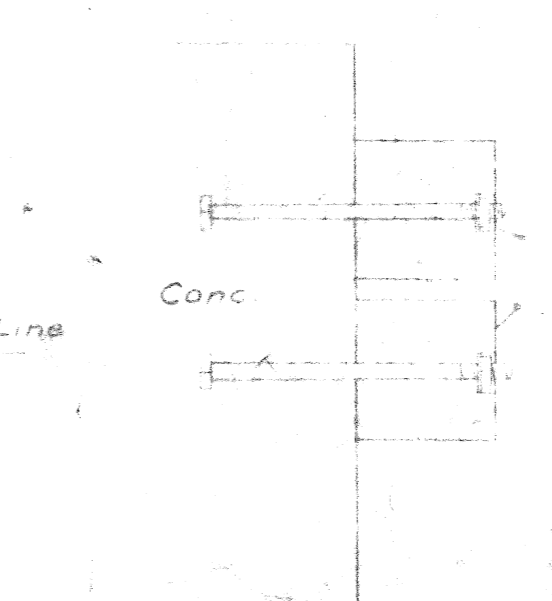
**LEGEND**

- ⊗ Remove Old 35 Foot Piles over Tunnel  
New 35 Foot Piles over Tunnel - Furnished and Driven
- ⊖ Recondition Single Timber Piles
- ⊙ New 50 Foot Piles incidental to Reconditioning Interior Pile Clumps.
- Pulled Not Replaced

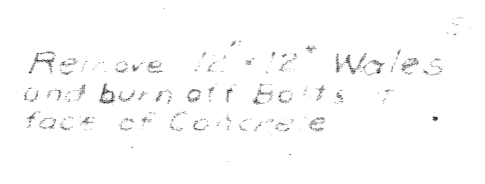


**PLAN**  
SCALE 1/8" = 1'-0"

**SECTION B-B**



**DETAIL 35 PILE CLUMP**  
SCALE 1/2" = 1'-0"



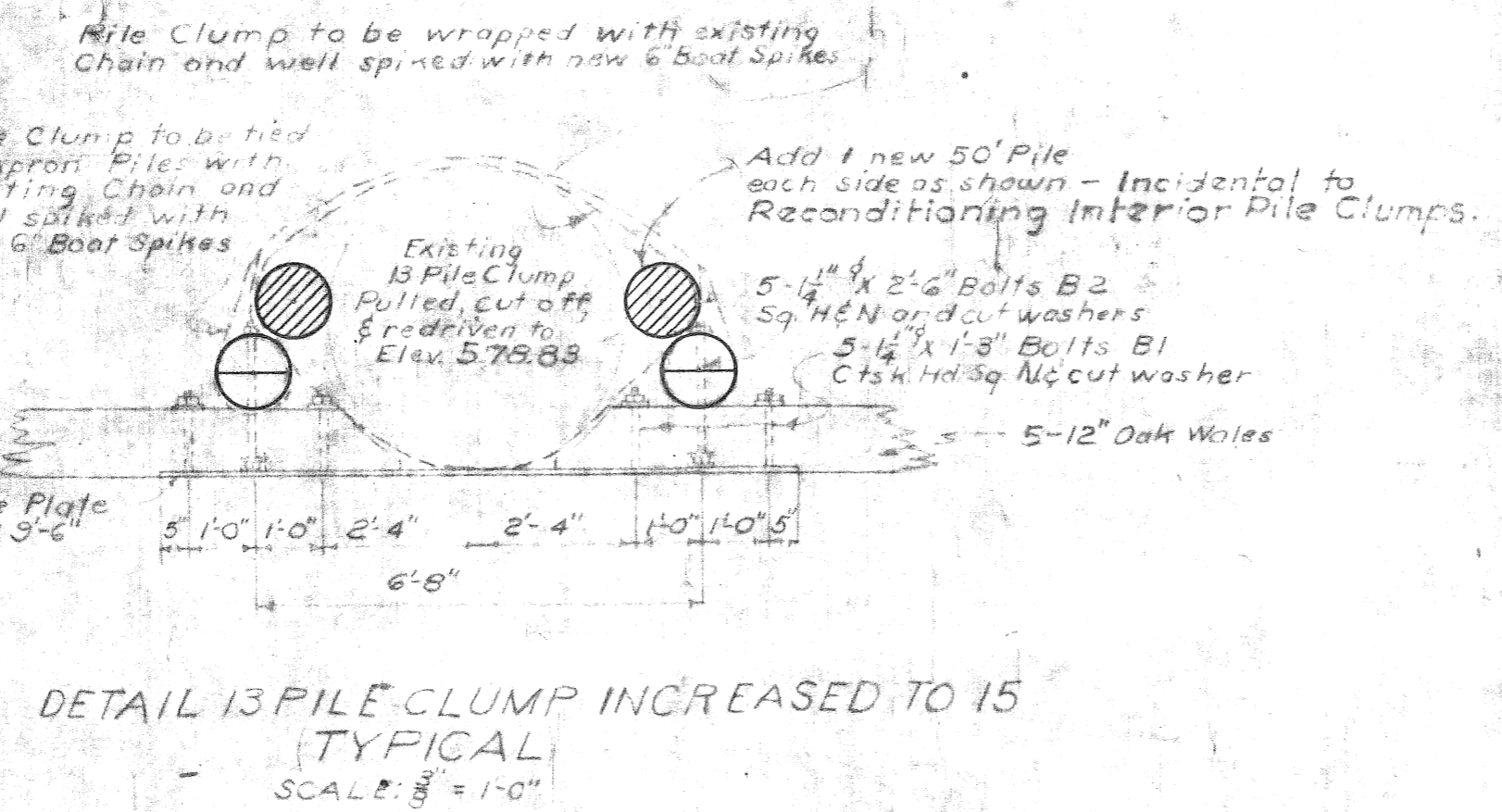
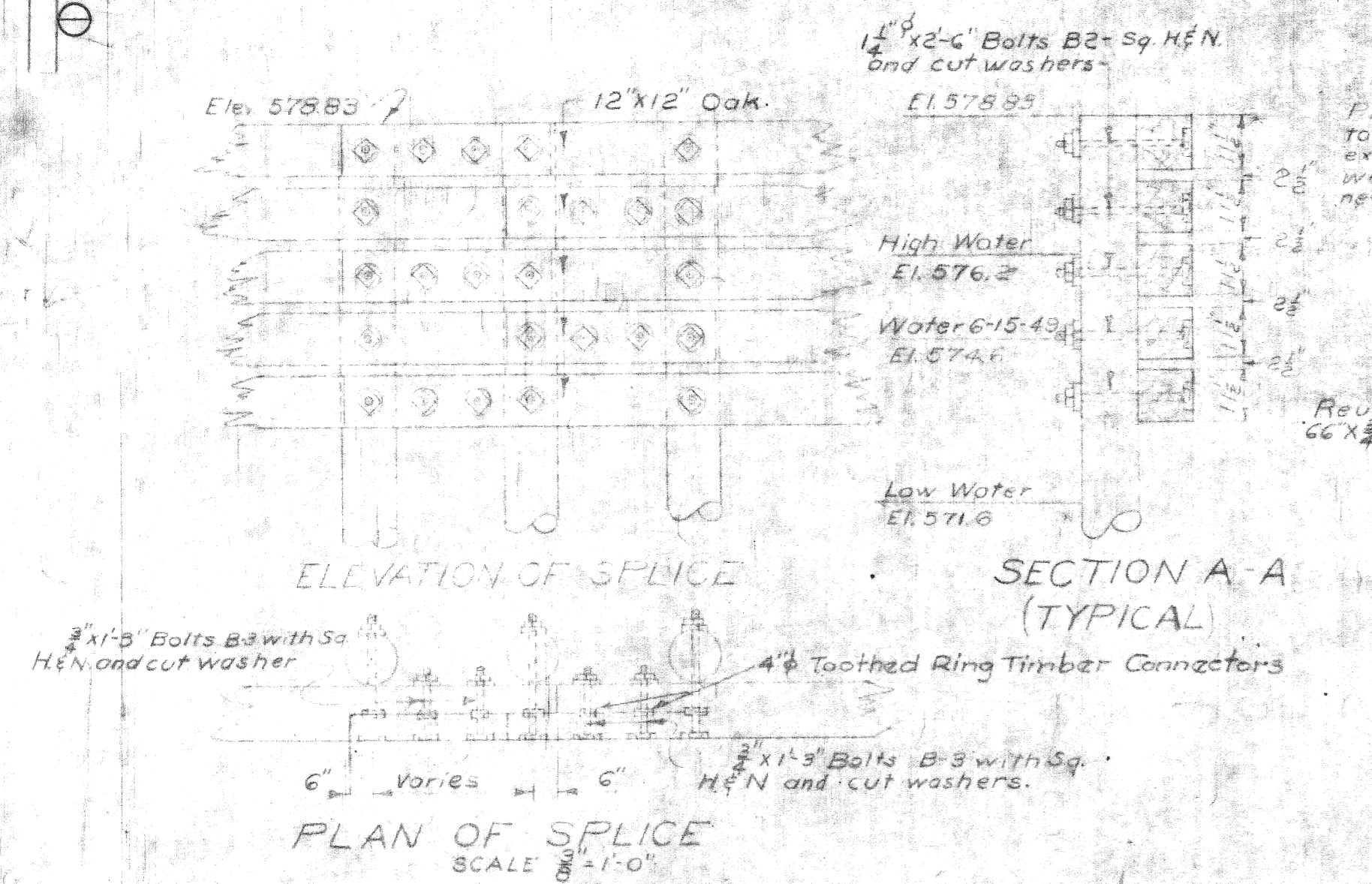
**BILL OF HARDWARE**

NO.	SIZE	LENGTH	ITEM	REMARKS	WT. LBS.
144	1/4"	1'-3"	Bolts Ctsk lid & Sq Nut	B-1 Bolt Plates to Oak Wales	950
559	1/4"	2'-6"	Bolts - 4H & Nut	B-2 Bolt Piles to Wale & Bolt Corner Timbers	6660
96	3/4"	3"	Bolts - 4H & Nut	B-3 Bolt Wale Splices	215
1234	1/8"	3' x 5' x 3"	Cut Washers	2 ea. B-2 of Piles, 1 ea. B-1	935
16	1/8"	3' x 4 1/2"	Cost Bevel Washers	2 ea. B-2 top corner Timber	25
192	3/8"	3' x 3' x 3"	Cut Washers	2 ea. Splice	170
80	1"	6"	Boat Spikes	Spike Chain to Piles	35
<b>Total</b>					<b>9040</b>

**QUANTITIES**

ITEMS OF WORK	QUANTITY	UNIT
Removing Old 35 Foot Piles over Tunnel	23	Each
Removing Old Timber Wale	17.82	L.S.
Reconditioning Single Timber Piles	25	Each
Reconditioning Interior Pile Clumps	4	Each
New 35 Foot Piles over Tunnel - Furnished and Driven	23	Each
12" x 12" Timber Wale - Furnished and Placed	17.82	M.B.M.
Reconditioning Fender Plates on Corner Clumps	4	Each
Miscellaneous Hardware	9040	Lbs.
4" Toothed Ring Timber Connectors - Furnished and Installed	200	Each

New 50' Piles 6  
Pulled Not Replaced 6



**NOTE**  
Removal, repair, painting and replacement of Chain and Steel Plates incidental to Reconditioning Interior Pile Clumps Pulling up, cutting off and re-driving of old 50 Foot Piles is incidental to Reconditioning Single Timber Piles.

REVISIONS	DRAWN BY	CHECKED BY	DATE	APPROVED
2. Field Revisions 3-29-50 R.A.M.V.M.K.	V.R.B.	M.K.	May 31 1949	<i>[Signature]</i>
	CORRECT			<i>[Signature]</i>
	ENGINEER OF DESIGN			COUNTY HIGHWAY ENGINEER

**WAYNE COUNTY ROAD COMMISSIONERS**  
DETROIT, MICHIGAN

MICHAEL J. O'BRIEN      JOHN P. OHARA      CHARLES L. WILSON

**W. FORT ST. BASCULE BRIDGE OVER ROUGE RIVER REPAIRS TO FENDERS - 1949**

STATE PROJECT	COUNTY JOB
ISSUE NO.	SHEET NO.
DATE	

Job 571 - FORT B112