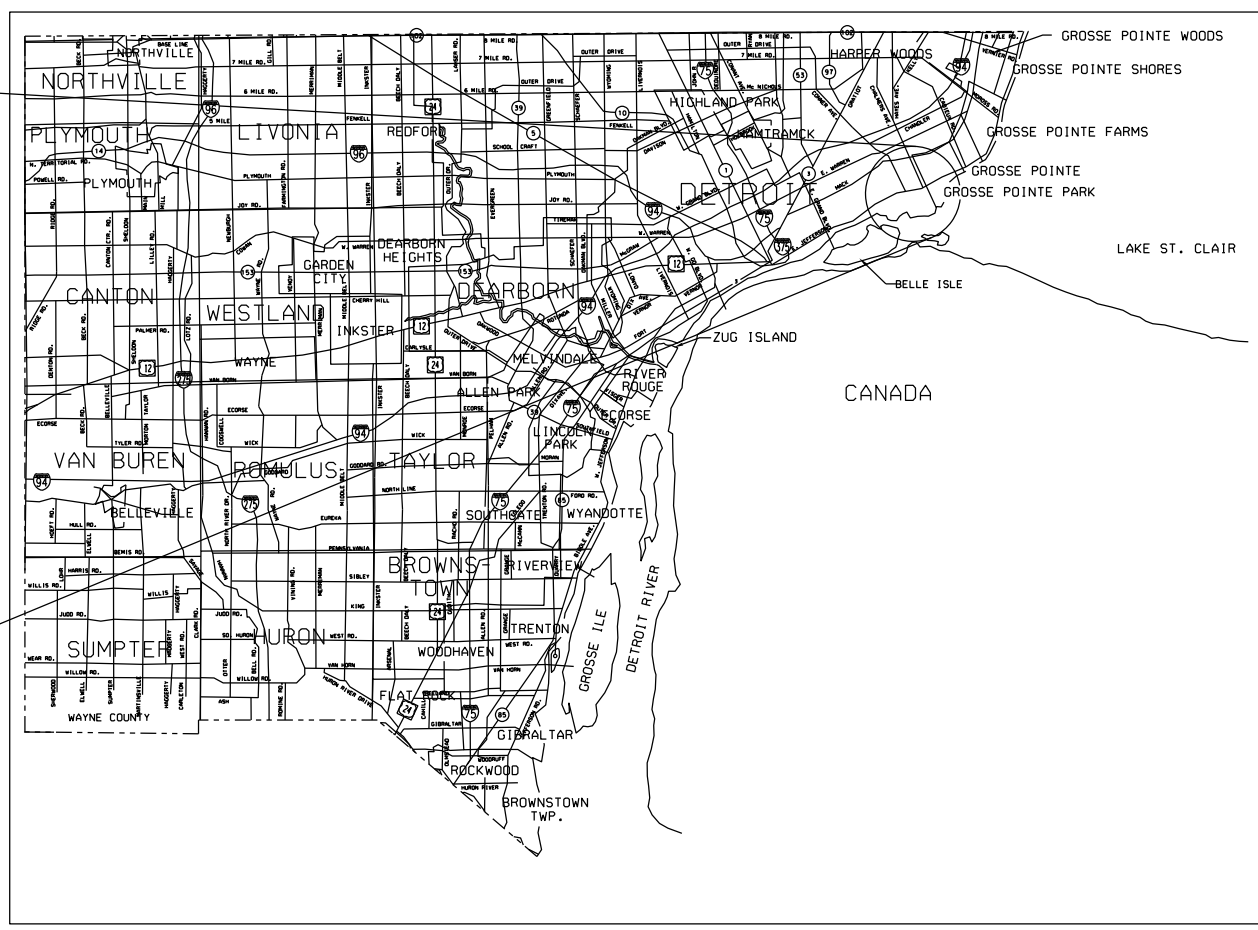
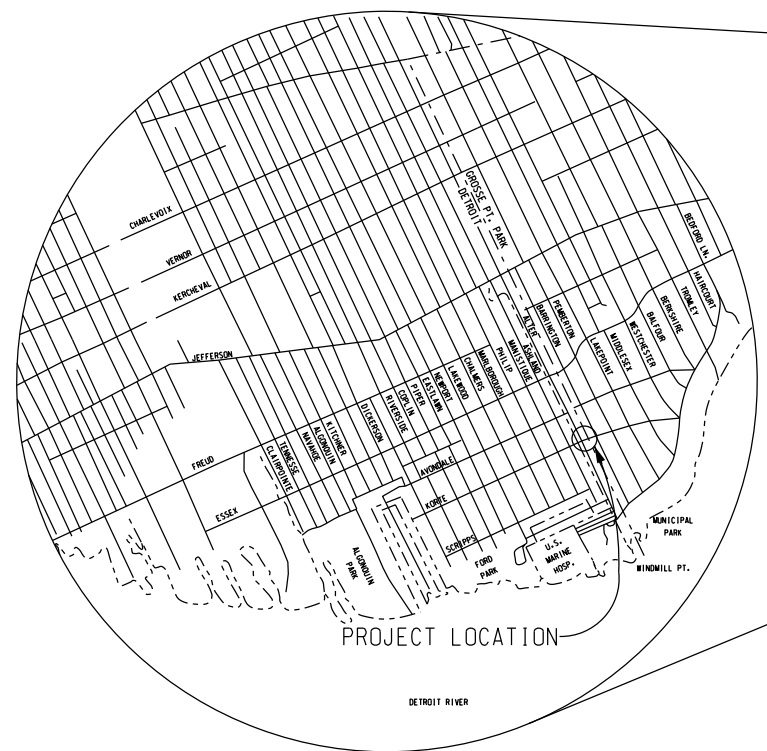


INDEX OF SHEETS

PLANS	SHEET No.
TITLE SHEET	1
GENERAL PLAN OF SITE	2
LOG OF BORINGS	3
GENERAL PLAN OF STRUCTURE	4
FOOTING PLAN AND DETAILS	5
MISCELLANEOUS DETAILS	6
PRECAST CULVERT SPECIFICATIONS	7
STEEL REINFORCEMENT AND QUANTITIES	8
DETOUR ROUTE DETAILS	9
MDOT STANDARD PLANS	
LIGHTED ARROWS AND BARRICADES	R-125A
SOIL EROSION AND SEDIMENTATION CONTROL MEASURES	R-96A
MOLDING, BEVEL, LIGHT STANDARD ANCHOR BOLT ASSEMBLY AND NAME PLATE DETAILS	B-103B
BRIDGE RAILING, SOLID PARAPET TYPE	B-18B
BRIDGE RAILING, 1 TUBE	B-24A

CITY OF DETROIT
MICHIGAN
DEPARTMENT OF PUBLIC SERVICE
PLAN AND PROFILE OF PROPOSED
BRIDGE REPLACEMENT PROJECT
NO. _____
JOB NO. _____
REPLACEMENT OF THE KORTE AVENUE
BRIDGE OVER FOX CREEK



THE DESIGN OF THIS STRUCTURE IS BASED ON CURRENT AASHTO STANDARD SPECIFICATIONS FOR HIGHWAY BRIDGES MS18 LOADING. LIVE LOAD PLUS IMPACT DEFLECTION DOES NOT EXCEED 1/1000 OF THE SPAN LENGTH.

EXCEPT WHERE OTHERWISE INDICATED ON THESE PLANS, THE PROPOSAL, AND SUPPLEMENTAL SPECIFICATIONS CONTAINED HEREIN, ALL MATERIALS AND WORKMANSHIP SHALL BE IN ACCORDANCE WITH THE MICHIGAN DEPARTMENT OF TRANSPORTATION STANDARD SPECIFICATIONS FOR CONSTRUCTION 1996 EDITION.

THE STATIONING AS SHOWN ON THESE PLANS FOR THE INTERSECTION OF THE CENTERLINE OF BRIDGE AND ROADWAY CENTERLINE IS BELIEVED TO BE CORRECT. IT SHALL, HOWEVER, BE CHECKED AT THE TIME OF STARTING CONSTRUCTION, AND IF THE STATIONING SHOWN ON THE PLANS IS INCORRECT IT SHALL BE REPORTED TO THE DESIGN OFFICE IN DETROIT, AND THE STRUCTURE SHALL BE STAKED OUT USING THE ACTUAL INTERSECTION OF THE CENTERLINE OF THE BRIDGE AND ROADWAY CENTERLINE AS THE CONTROL POINT.

ALL EXPOSED CONCRETE CORNERS SHOWN SQUARE ON THE PLANS SHALL BE BEVELED WITH 13 mm TRIANGULAR MOLDINGS EXCEPT AS OTHERWISE NOTED.

THE DESIGN OF THE STRUCTURAL MEMBERS IS BASED ON MATERIAL OF THE FOLLOWING GRADES AND STRESSES.

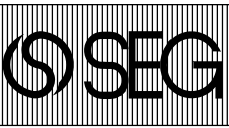
CONCRETE: GRADE S2	f'c = 21 MPa
CONCRETE: GRADE D	f'c = 28 MPa
STEEL REINFORCEMENT:	fy = 400 MPa

ALL DIMENSIONS ON THESE PLANS ARE IN MILLIMETERS EXCEPT AS NOTED.

METRIC

DIMENSIONS ARE IN MILLIMETERS UNLESS OTHERWISE SHOWN. ELEVATIONS, COORDINATES, CURVE AND ALIGNMENT DATA ARE IN METERS. STATIONS ARE IN KILOMETERS + METERS.

REVISIONS	DSGN BY	F. T.	7-97
	DR'N BY	J. E.	7-97
	CK'D BY	CDP	7-97
	APP'D BY		



SNELL ENVIRONMENTAL GROUP, INC. A DLZ Company
151 W. CONGRESS, SUITE 328
DETROIT, MICHIGAN 48226
TELEPHONE (313) 961-4040

FTA
FEMI TALABI & ASSOCIATES INC.
615 CRISWOLD, SUITE 1506, DETROIT, MICHIGAN, 48226



CITY OF DETROIT MICHIGAN

KORTE AVE. OVER THE FOX CREEK

TITLE SHEET

SCALE	NOT TO SCALE
PROJECT NO.	9641-5160-02
SHEET NO.	1 OF 9

FILE NAME: 01KRCOV.DGN

60 61 62 63
50 51 52 53 54 55 56 57 58 59
40 41 42 43 44 45 46 47 48 49
30 31 32 33 34 35 36 37 38 39
20 21 22 23 24 25 26 27 28 29
11 12 13 14 15 16 17 18 19
1 2 3 4 5 6 7 8 9 10

UTILITIES	
AMERITECH 4000 ALLEN RD. ROOM 101 ALLEN PARK, MICHIGAN 48101 ATTN: DAVE BUCIENSKI PHONE No.: (313) 389-9819	TELEPHONE
CITY OF DETROIT WATER & SEWERAGE DEPT 735 RANDOLPH ST. DETROIT, MICHIGAN 48226 PHONE No.: (313) 224-4800	WATER & SEWERAGE
DETROIT EDISON 2000 SECOND AVE. ROOM 607 G.O. DETROIT, MICHIGAN 48226 ATTN: JOHN SQUIRES PHONE No.: (313) 235-6597	ELECTRIC
MICHIGAN CONSOLIDATED GAS CO. DRAFTING CLERK MAIN REPLACEMENT TEAM NOBLE SECOND FLOOR 3200 HOBSON DETROIT, MICHIGAN 48201 PHONE No.: (313) 577-7236	GAS

EXISTING STRUCTURE
 ONE SPAN REINFORCED CONCRETE ARCH STRUCTURE MEASURING 10.67 m AND RISE 1.52 m BUILT IN 1924.
 7925mm CLEAR ROADWAY.

BENCHMARK
 B.M. #62-254A ELEV. 174.852
 CITY OF DETROIT, N.E. QUAD PHILIP RD. AND AVONDALE RD. INTERSECTION OF SIDEWALKS
 B.M. #61-255 ELEV. 174.605
 CITY OF DETROIT, N.E. QUAD CHALMERS RD. AND SCRIPPS RD. INTERSECTION OF SIDEWALKS

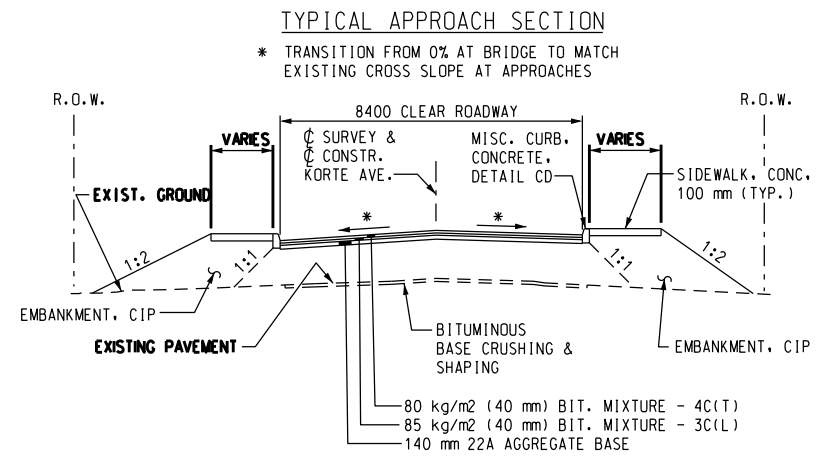
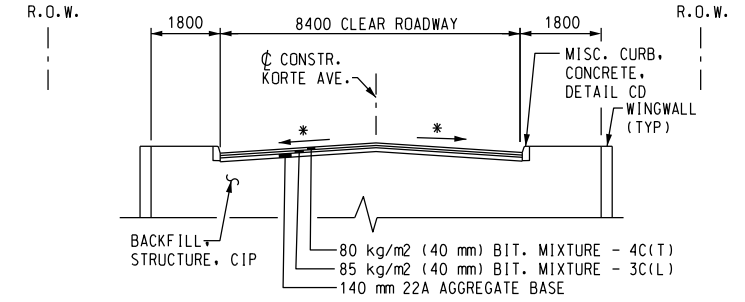
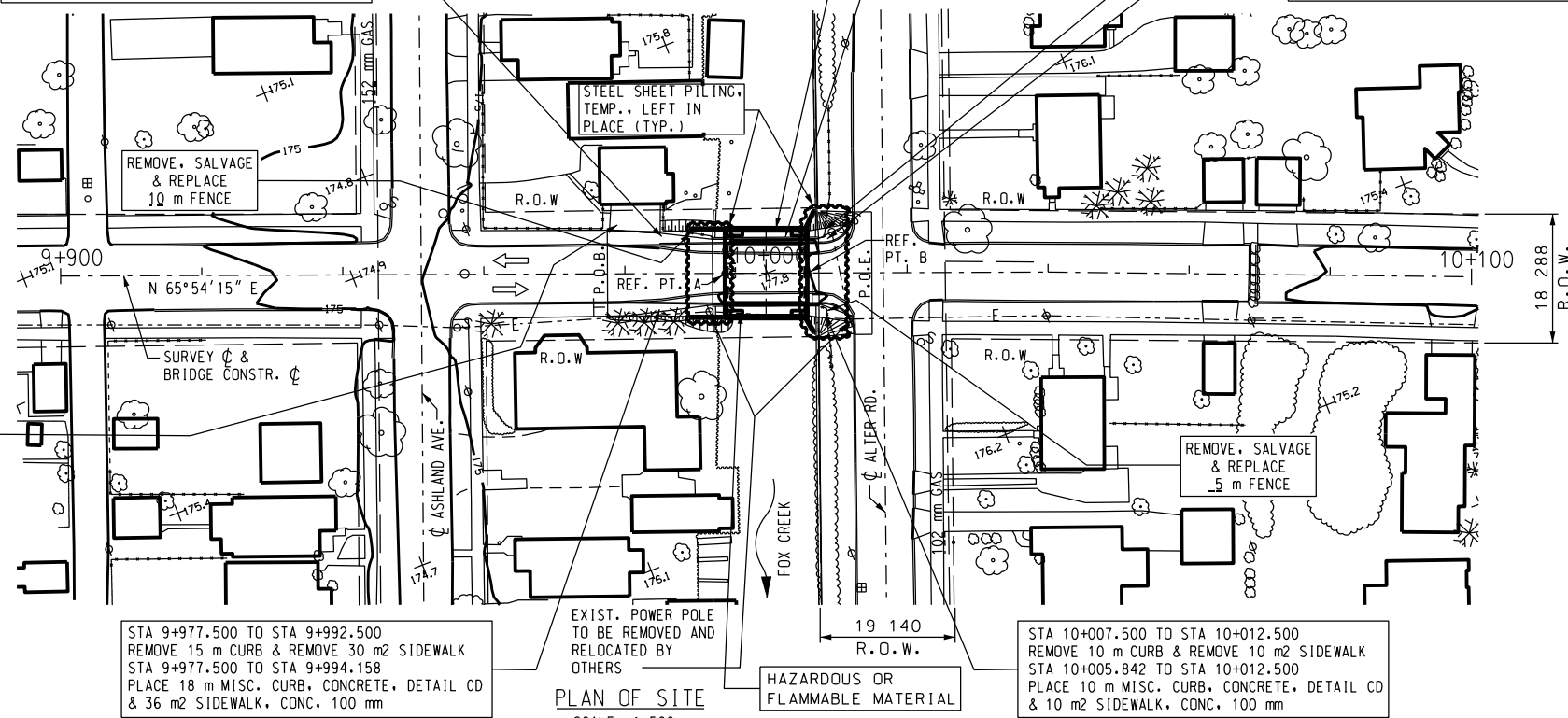
PROPOSED REPLACEMENT
 KORTE AVE. BRIDGE
 MDOT - B01 OF 1086
 CITY - BW-249

REMOVE, SALVAGE & REPLACE
 5 m FENCE

STA 10+007.500 TO STA 10+012.500
 REMOVE 10 m CURB & REMOVE 10 m² SIDEWALK
 STA 10+005.842 TO STA 10+012.500
 PLACE 10 m MISC. CURB, CONCRETE, DETAIL CD & 10 m² SIDEWALK, CONC. 100 mm

WITNESSES		
WITNESS TO CONTROL POINT 102: STA. 9+900 (MAG. NAIL)		
N 80° W	SE CORNER HOUSE	18.92 m
S 50° W	POWER POLE	15.99 m
S 60° E	POWER POLE	10.15 m
WITNESS TO CONTROL POINT 103: STA. 10+040 (MAG. NAIL)		
N 85° W	762 mm ELM	13.36 m
S 10° E	POWER POLE	6.25 m
N 30° W	SW CORNER HOUSE	12.10 m

DRIVEWAYS TO BE PAVED TO PROVIDE A SMOOTH TRANSITION BETWEEN PROPOSED PAVEMENT AND EXISTING DRIVEWAY AS DIRECTED BY ENGINEER.



STA 9+977.500 TO STA 9+992.500
 REMOVE 15 m CURB & REMOVE 30 m² SIDEWALK
 STA 9+977.500 TO STA 9+994.158
 PLACE 18 m MISC. CURB, CONCRETE, DETAIL CD & 36 m² SIDEWALK, CONC. 100 mm

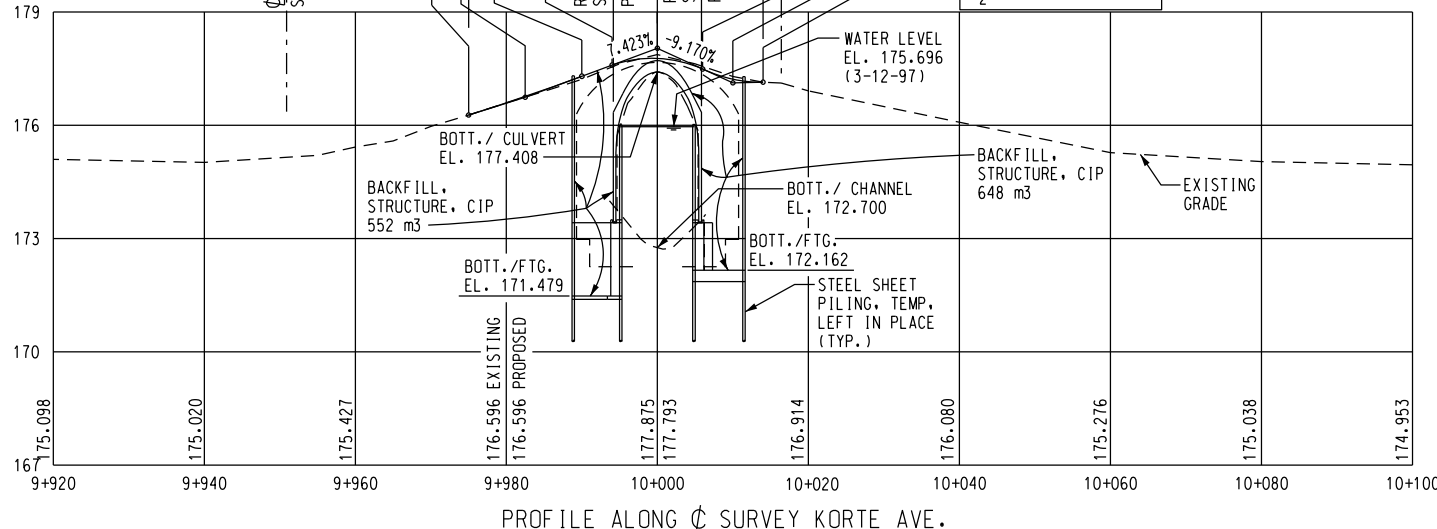
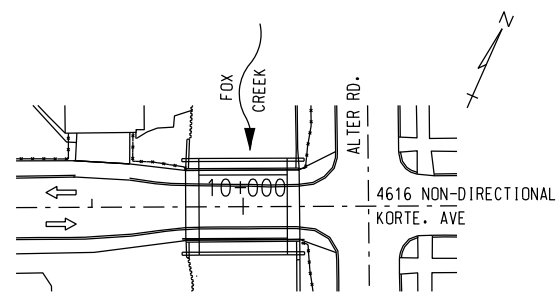
EXIST. POWER POLE TO BE REMOVED AND RELOCATED BY OTHERS
 HAZARDOUS OR FLAMMABLE MATERIAL

STA 10+007.500 TO STA 10+012.500
 REMOVE 10 m CURB & REMOVE 10 m² SIDEWALK
 STA 10+005.842 TO STA 10+012.500
 PLACE 10 m MISC. CURB, CONCRETE, DETAIL CD & 10 m² SIDEWALK, CONC. 100 mm

VPI STA = 9+982.500
 VPI EL. = 176.743
 CURVE LEN = 15.000
 K = 13.125
 E = 0.021
 G₁ = +16.280%
 G₂ = +17.423%

LIMITS OF CONSTRUCTION
 11 684
 VPC STA = 9+990.000
 VPT STA = 9+994.000
 VPC STA = 9+994.000
 VPT STA = 9+994.000
 REF. PT. A STA. 9+994.158
 P/G EL. 177.608
 REF. PT. B STA. 10+005.842
 P/G EL. 177.506
 VPI STA = 10+000.00
 VPI EL. = 178.042
 CURVE LEN = 12.000
 K = 0.723
 E = -0.249
 G₁ = +7.423%
 G₂ = -19.170%

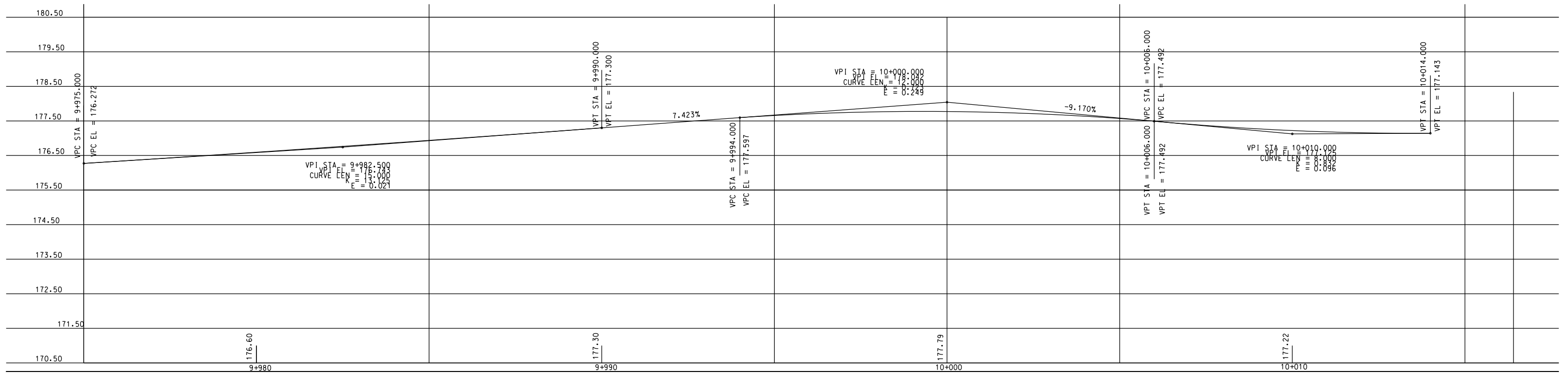
VPI STA = 10+010.000
 VPI EL. = 177.125
 CURVE LEN = 8.000
 K = 0.832
 E = 0.096
 G₁ = -19.170%
 G₂ = +10.450%



NOTES:
 THE WORK COVERED BY THESE PLANS INCLUDES MAINTAINING TRAFFIC, REMOVAL OF EXISTING BRIDGE, CONSTRUCTION OF THE PROPOSED BRIDGE AND APPROACH WORK.
 THE CONTRACTOR SHALL LOCATE ALL ACTIVE UNDERGROUND UTILITIES PRIOR TO STARTING WORK AND SHALL CONDUCT HIS OPERATIONS IN SUCH A MANNER AS TO ENSURE THAT THOSE UTILITIES NOT REQUIRING RELOCATION WILL NOT BE DISTURBED.
 KORTE AVE. TRAFFIC IS TO BE DETOURED OVER THE EXISTING ROADS.
 DATUM REFERS TO N.A.V.D. DATUM.
 WATER LEVEL IS SUBJECT TO CHANGE. THE CONTRACTOR IS RESPONSIBLE FOR MAKING HIS OWN DETERMINATION OF WATER LEVELS THAT WILL EXIST DURING CONSTRUCTION.
 MEASURES SHALL BE TAKEN TO PREVENT DEBRIS FROM FALLING FROM THE STRUCTURE. IF DEBRIS FALLS INTO THE WATERWAY, IT SHALL BE REMOVED WITHIN 24 HOURS. SINCE DISTURBANCE OF THE WATERWAY BOTTOM MAY BE AS HARMFUL AS THE DEBRIS ITSELF, THE PREVENTIVE MEASURES MUST BE MADE AS EFFECTIVE AS POSSIBLE.
 TEMPORARILY STORED EXCAVATED MATERIAL SHALL NOT BE ALLOWED TO ERODE INTO THE WATERCOURSE.
 ALL DISTURBED EXISTING GROUND AND ANY NEW FILL SLOPES SHALL BE SEED, FERTILIZED, AND MULCHED AS DIRECTED BY THE ENGINEER. TO BE INCLUDED IN THE PAY ITEMS "SEEDING, MIXTURE TUF," "FERTILIZER, CHEMICAL NUTRIENT, CLASS A," AND "MULCH BLANKET."

METRIC
 DIMENSIONS ARE IN MILLIMETERS UNLESS OTHERWISE SHOWN. ELEVATIONS, COORDINATES, CURVE AND ALIGNMENT DATA ARE IN METERS. STATIONS ARE IN KILOMETERS + METERS.

REVISIONS 1 2 3 4 5 6 7 8 9 10	DSGN BY: E.I.: 7-97 DR'N BY: J.E.: 7-97 CK'D BY: C.D.P.: 7-97 APP'D BY:		SNELL ENVIRONMENTAL GROUP, INC. A DLZ Company 151 W. CONGRESS, SUITE 328 DETROIT, MICHIGAN 48226 TELEPHONE (313) 961-4040		FEMI TALABI & ASSOCIATES INC. 615 CRISWOLD, SUITE 1505, DETROIT, MICHIGAN, 48226		CITY OF DETROIT MICHIGAN	KORTE AVE. OVER THE FOX CREEK	GENERAL PLAN OF SITE	SCALE NOT TO SCALE
	PROJECT NO. 9641-5160-02									
	SHEET NO. 2 OF 9									
	FILE NAME: 02080511.DGN									



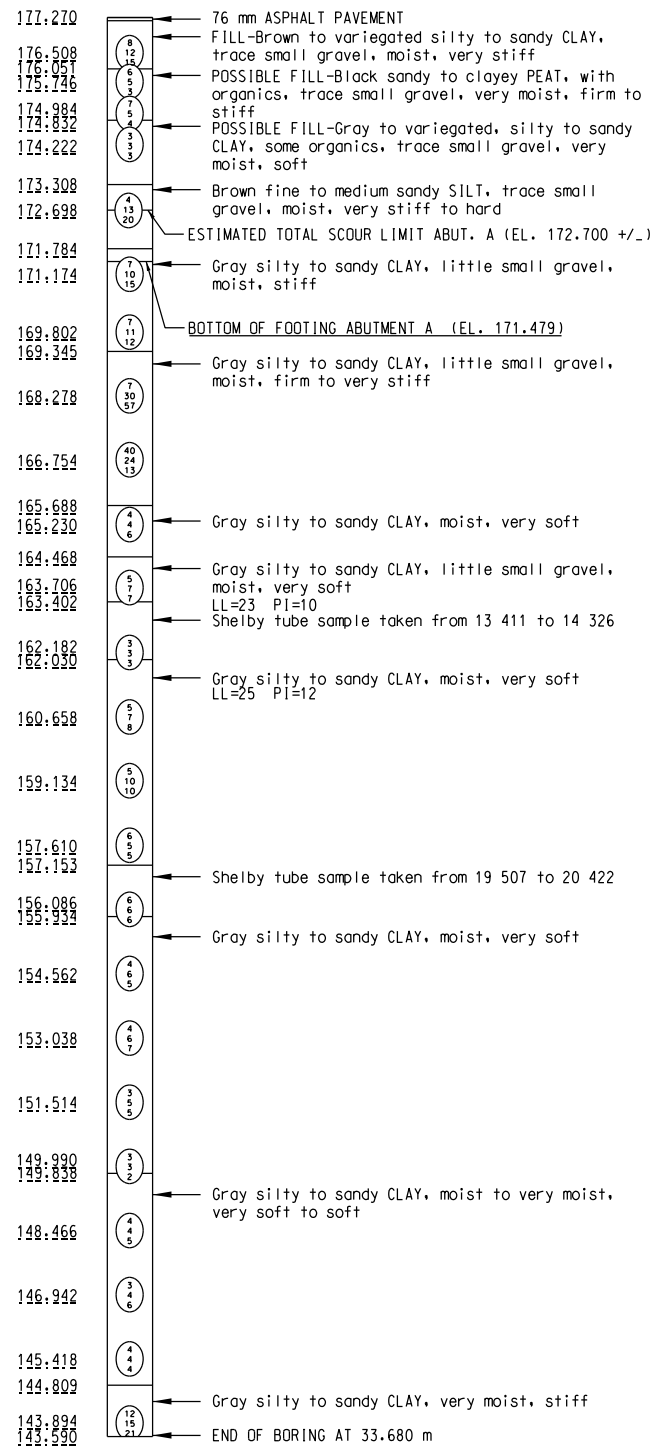
60 61 62 63
50 51 52 53 54 55 56 57 58 59
40 41 42 43 44 45 46 47 48 49
30 31 32 33 34 35 36 37 38 39
20 21 22 23 24 25 26 27 28 29
11 12 13 14 15 16 17 18 19
1 2 3 4 5 6 7 8 9 10

TEST HOLE SB-1

LOCATION STATION 9+990.834 1150 LT

KORTE AVE. OVER FOX CREEK

ELEV. GROUND SURFACE ELEVATION 177.270



NOTE: WATER LEVEL AT COMPLETION: 25.6 m

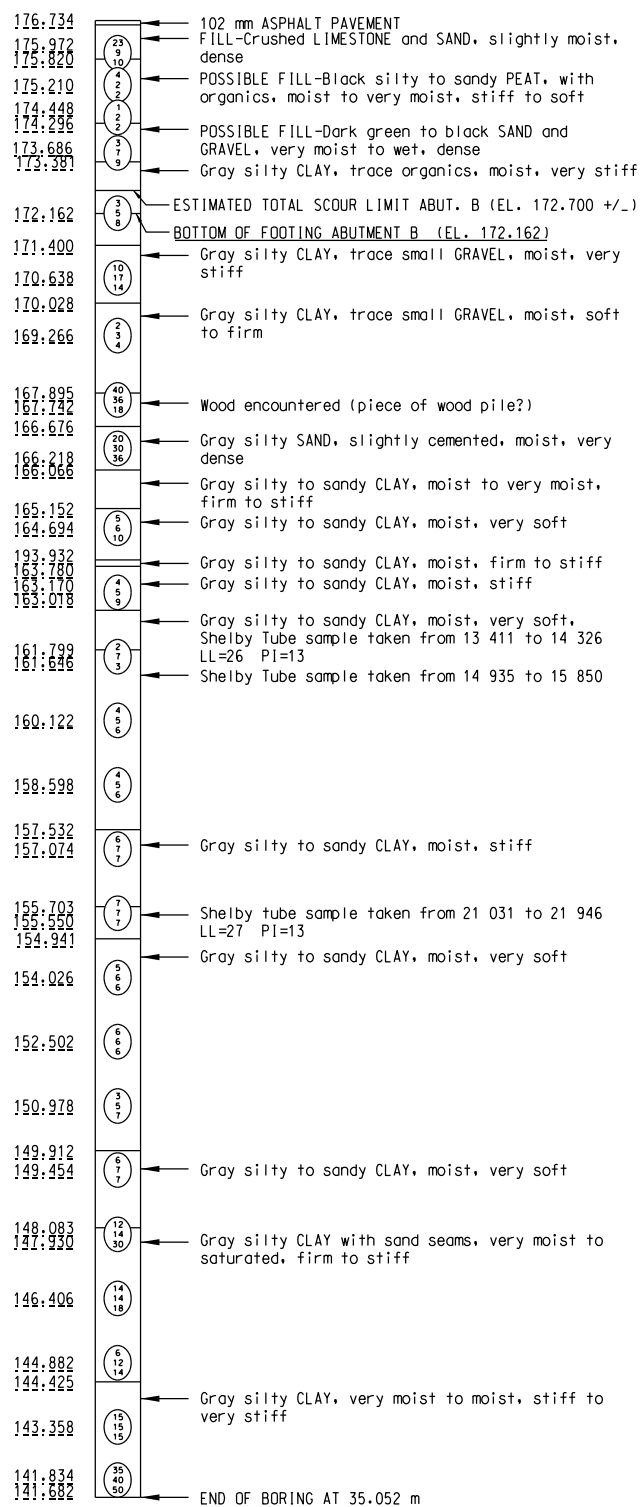
BORING DATE 10/12/94

TEST HOLE SB-2

LOCATION STATION 10+023.384 158 RT

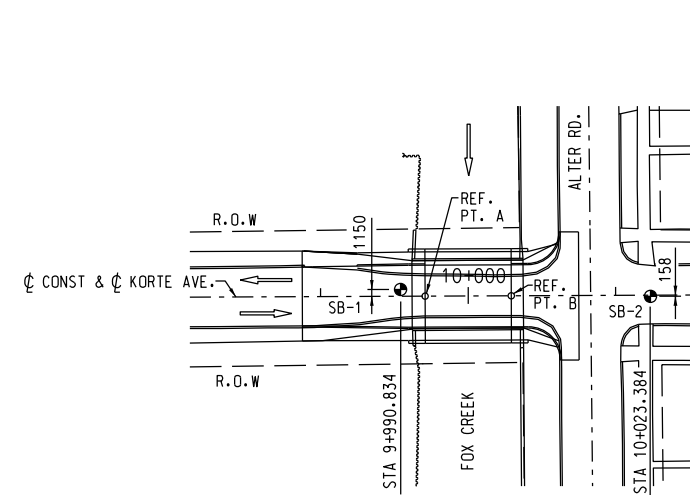
KORTE AVE. OVER FOX CREEK

ELEV. GROUND SURFACE ELEVATION 176.734



NOTE: WATER LEVEL AT COMPLETION: 11.3 m

BORING DATE 10/19/94



NOTES:

NUMBERS IN CIRCLES DENOTE NUMBER OF BLOWS REQUIRED TO DRIVE A 50.8 mm SPLIT SPOON SAMPLER 3 SUCCESSIVE 0.15 m INCREMENTS USING A 63.5 kg HAMMER FALLING 0.76 m. WHERE THE SAMPLER IS DRIVEN DISTANCES OTHER THAN THE 0.15 m INCREMENT, THE DISTANCE IS SHOWN IN PARENTHESIS TO THE RIGHT OF THE NUMBER OF BLOWS.

- (X) NUMBER OF BLOWS PER 0.15 m
- (X) NUMBER OF BLOWS PER 0.15 m
- (X) NUMBER OF BLOWS PER 0.15 m
- (X) NUMBER OF BLOWS PER 0.15 m
- (X) NUMBER OF BLOWS PER 0.15 m
- XX(XX) NUMBER OF BLOWS PER DISTANCE (mm)
- XX(XX) NUMBER OF BLOWS PER DISTANCE (mm)

CONSISTENCY WAS DETERMINED BY INSPECTION OF SAMPLES AND SUBSTANTIATED BY SOILS RESISTANCE TO DRILLING TOOLS.

WATER LEVELS MAY BE INFLUENCED BY RESIDUAL BORING WATER.

THE SOIL BORING LOGS REPRESENT POINT INFORMATION. PRESENTATION OF THIS INFORMATION IN NO WAY IMPLIES THAT SUBSURFACE CONDITIONS ARE THE SAME AT LOCATIONS OTHER THAN THE EXACT LOCATION OF THE BORING.

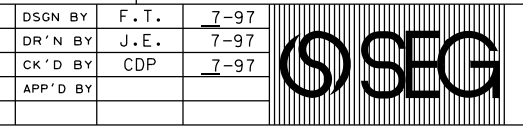
SOIL BORINGS WERE PERFORMED ON DATES SHOWN BELOW BORING.

BY: PROFESSIONAL SERVICES INDUSTRIES, INC.
24355 Capitol Ave.
Detroit, Mich. 48239
Phone: (313) 255-4200

METRIC

DIMENSIONS ARE IN MILLIMETERS UNLESS OTHERWISE SHOWN. ELEVATIONS, COORDINATES, CURVE AND ALIGNMENT DATA ARE IN METERS. STATIONS ARE IN KILOMETERS + METERS.

REVISIONS	DSGN BY	F. T.	7-97
	DR'N BY	J. E.	7-97
	CK'D BY	CDP	7-97
	APP'D BY		



SNELL ENVIRONMENTAL GROUP, INC. A DLZ Company
151 W. CONGRESS, SUITE 328
DETROIT, MICHIGAN 48226
TELEPHONE (313) 961-4040

F.T.A. FEMI TALABI & ASSOCIATES INC.
615 CRISWOLD, SUITE 1600, DETROIT, MICHIGAN, 48226



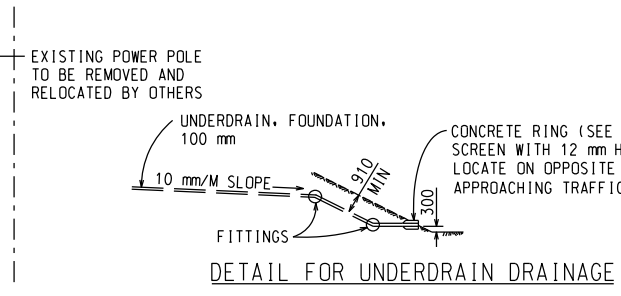
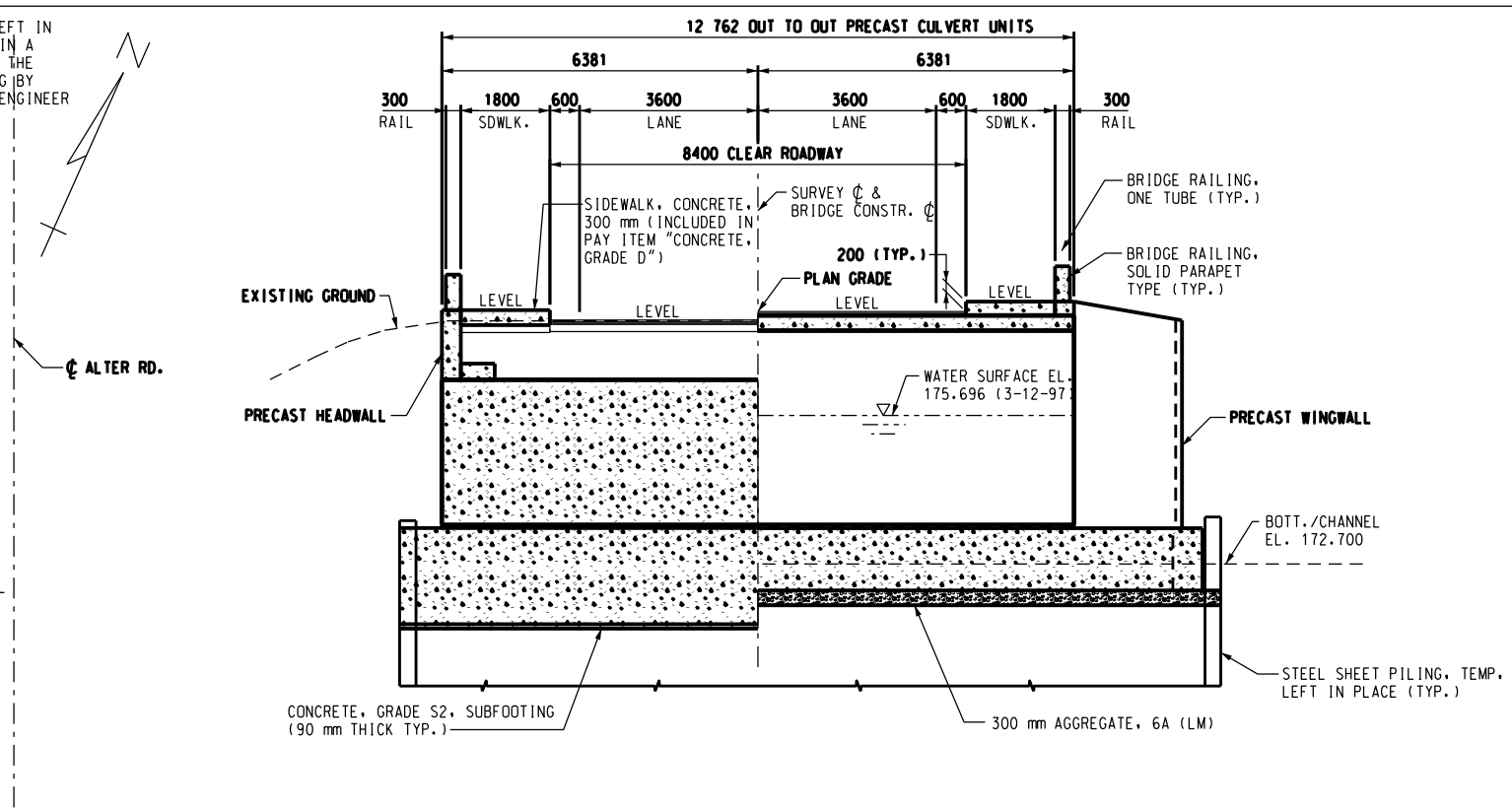
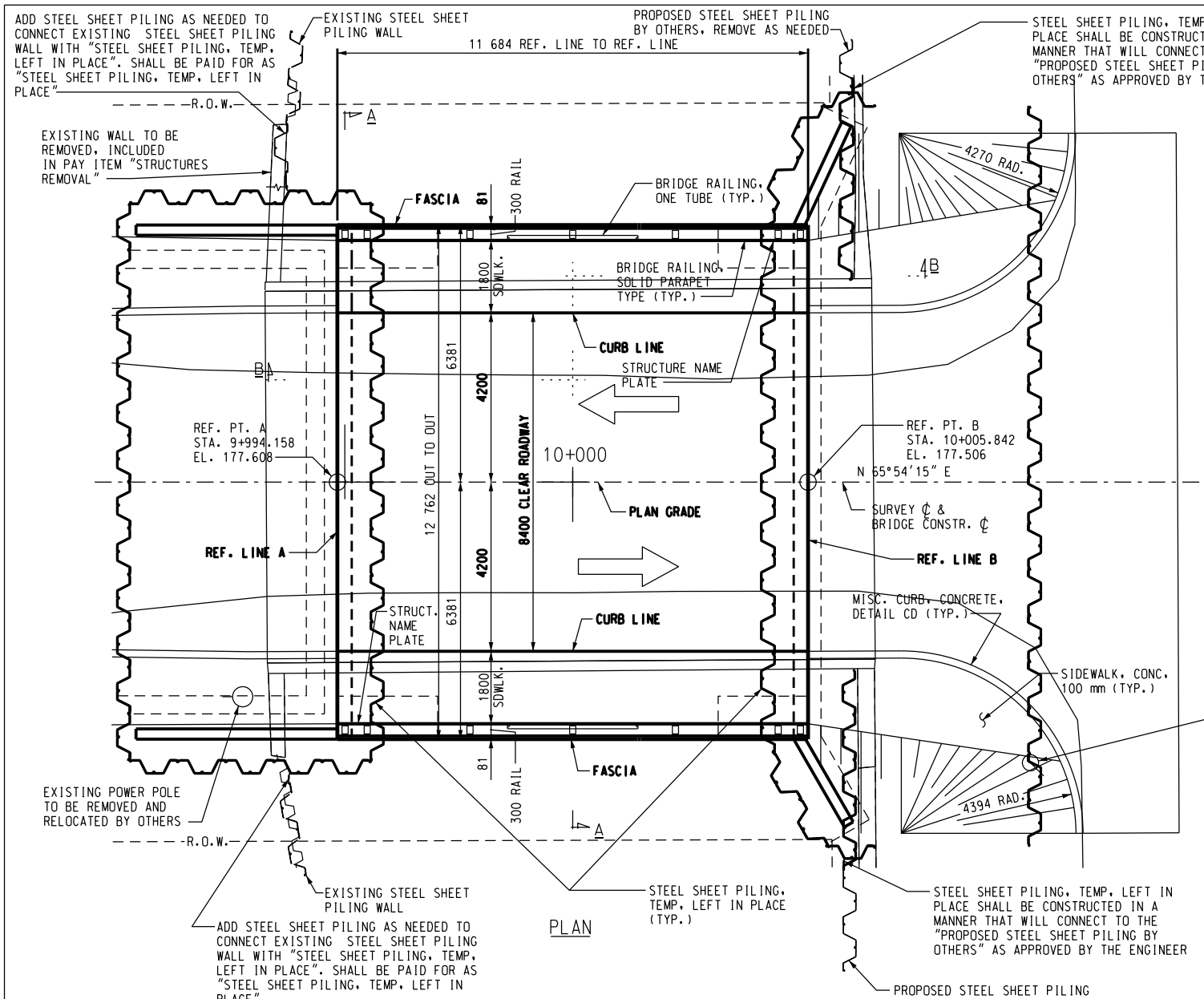
KORTE AVE. OVER THE FOX CREEK

LOG OF BORINGS

SCALE	NOT TO SCALE
PROJECT NO.	9641-5160-02
SHEET NO.	3 OF 9

FILE NAME: 02KORBOR.DGN

60 61 62 63
 50 51 52 53 54 55 56 57 58 59
 40 41 42 43 44 45 46 47 48 49
 30 31 32 33 34 35 36 37 38 39
 20 21 22 23 24 25 26 27 28 29
 18 19
 11 12 13 14 15 16
 1 2 3 4 5 6 7 8 9 10

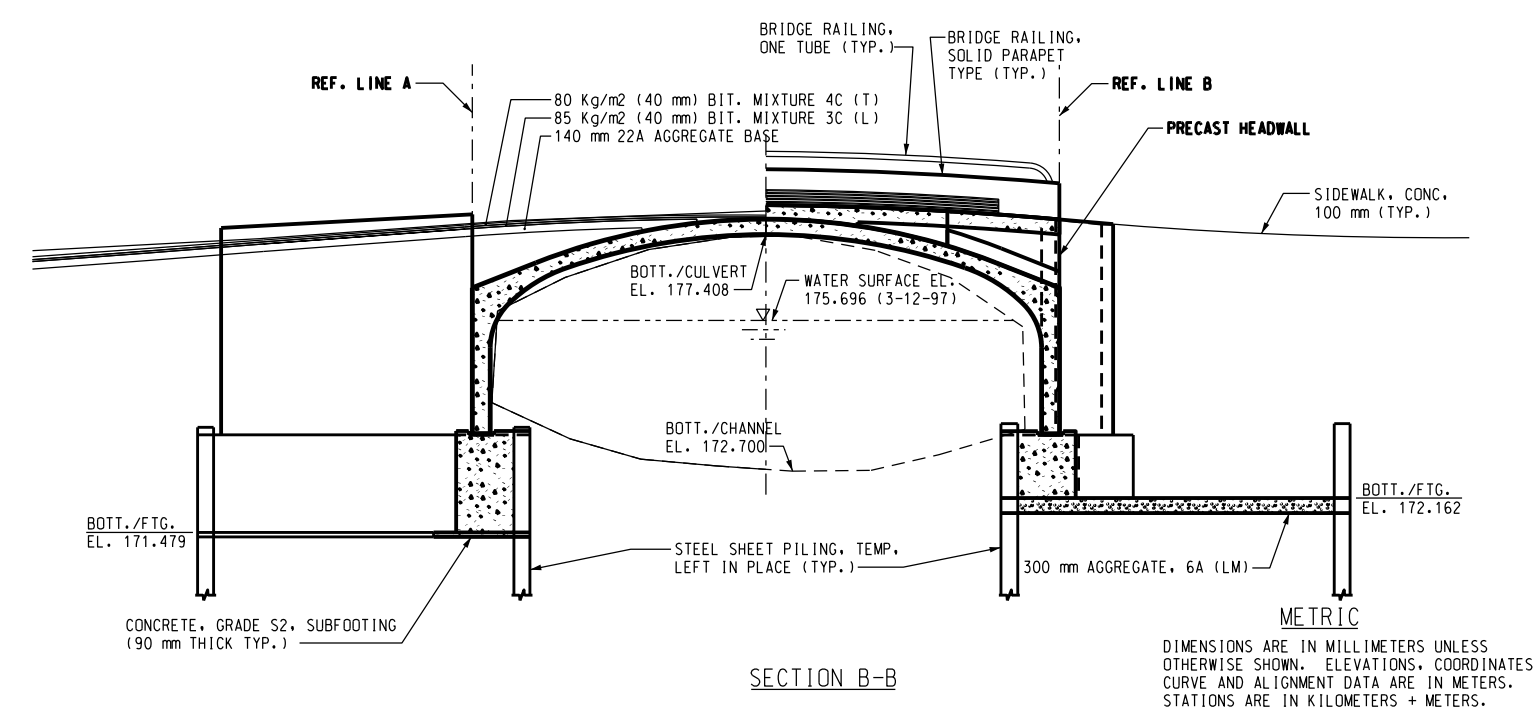
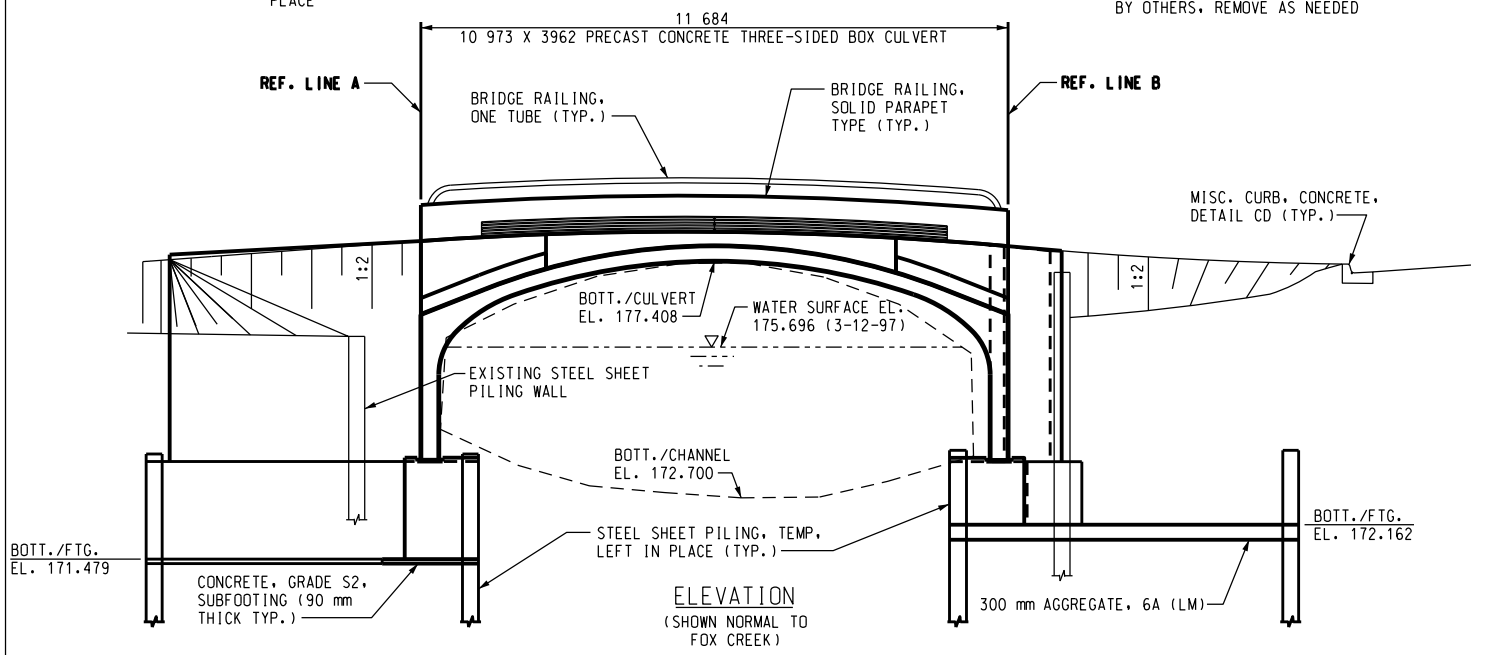


NOTES:

THE DESIGN OF THIS STRUCTURE IS BASED ON CURRENT AASHTO STANDARD SPECIFICATIONS FOR HIGHWAY BRIDGES MS18 LOADING. LIVE LOAD PLUS IMPACT DEFLECTION DOES NOT EXCEED 1/1000 OF SPAN LENGTH. THE TOP OF THE ROADWAY AND TOPS OF SIDEWALKS ARE PARALLEL TO THE VERTICAL CURVE.

STEEL SHEET PILING, TEMP. LEFT IN PLACE SHALL BE CUT OFF AS DIRECTED BY THE ENGINEER.

ALL DEWATERING OPERATIONS, MATERIAL AND LABOR SHALL BE INCLUDED IN THE PAY ITEM "STEEL SHEET PILING, TEMP. LEFT IN PLACE".



METRIC

DIMENSIONS ARE IN MILLIMETERS UNLESS OTHERWISE SHOWN. ELEVATIONS, COORDINATES, CURVE AND ALIGNMENT DATA ARE IN METERS. STATIONS ARE IN KILOMETERS + METERS.

REVISIONS	DSGN BY	E. I.	7-97
	DR'N BY	J. E.	7-97
	CK'D BY	C. D. P.	7-97
	APP'D BY		

SEG

SNELL ENVIRONMENTAL GROUP, INC. A DLZ Company
 151 W. CONGRESS, SUITE 328
 DETROIT, MICHIGAN 48226
 TELEPHONE (313) 961-4040

FTA

FEMI TALABI & ASSOCIATES INC.
 615 GREENWOOD, SUITE 1505, DETROIT, MICHIGAN, 48226

DETROIT

CITY OF DETROIT MICHIGAN

KORTE AVE. OVER THE FOX CREEK

GENERAL PLAN OF STRUCTURE

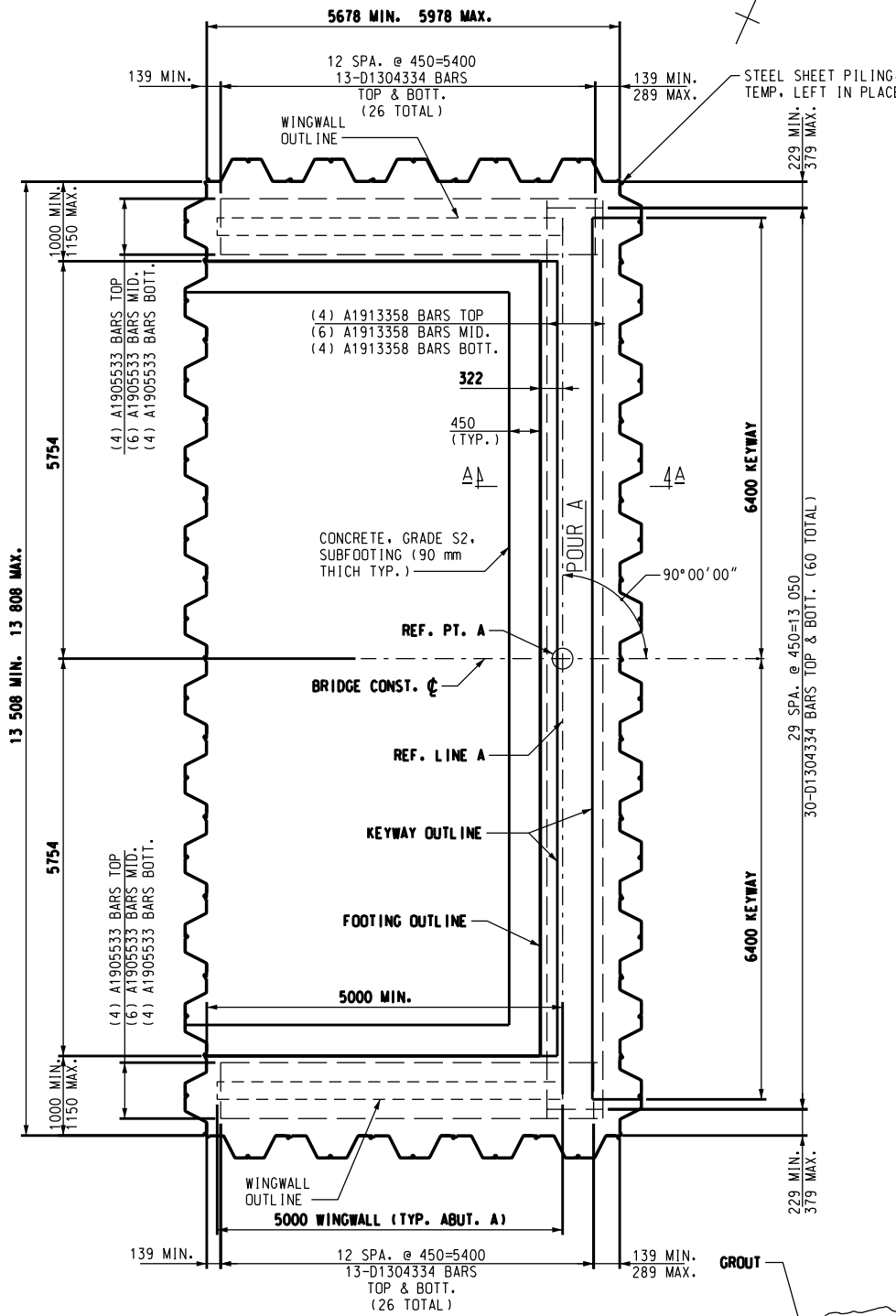
SCALE NOT TO SCALE

PROJECT NO. 9641-5160-02

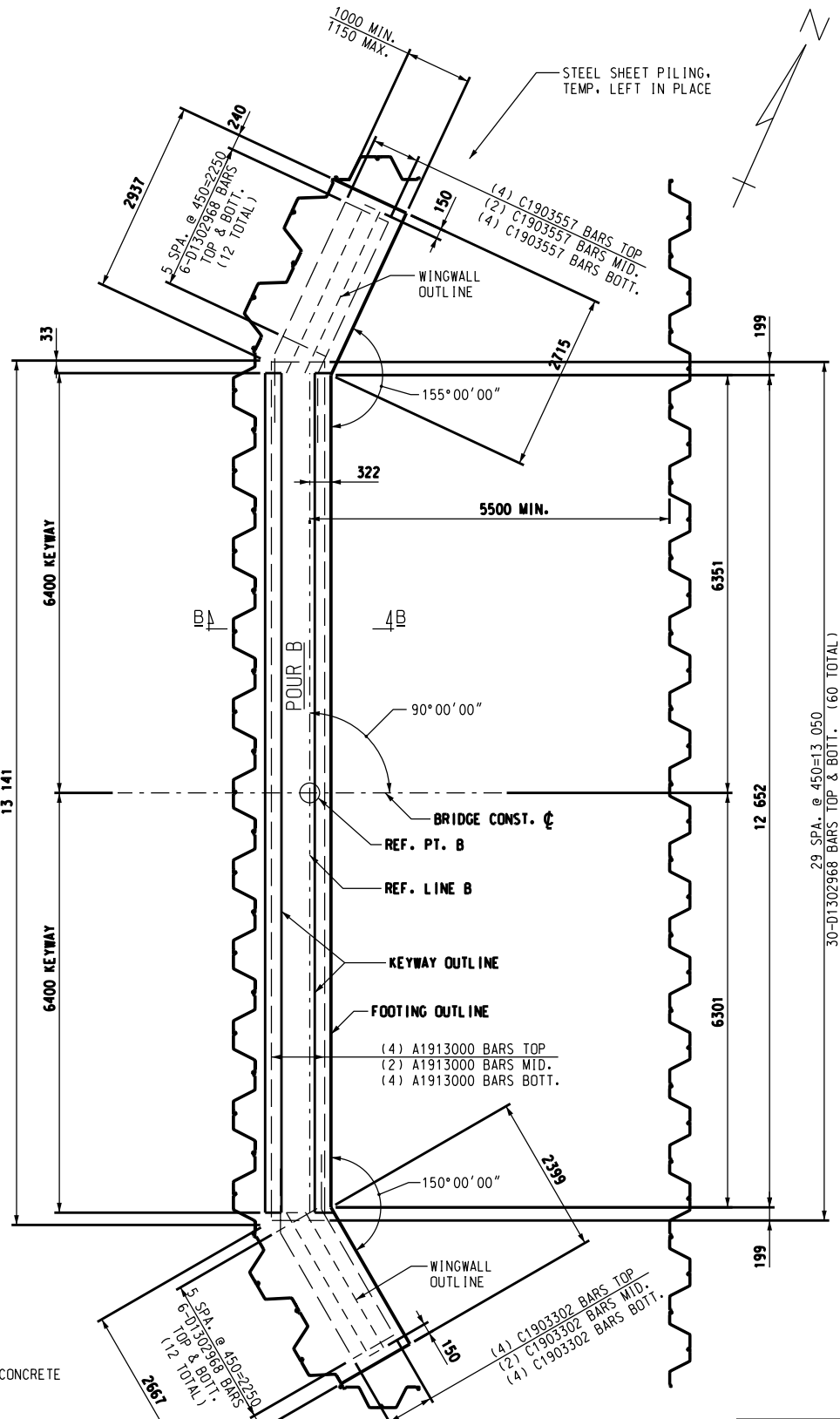
SHEET NO. 4 OF 9

FILE NAME: .DCN

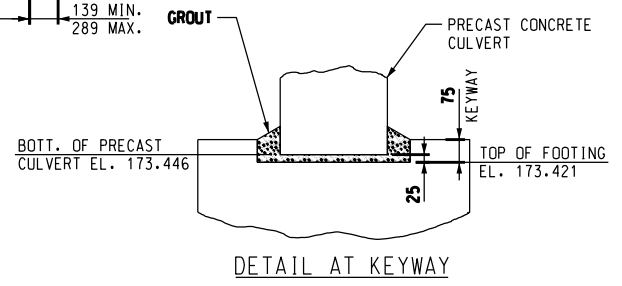
1 2 3 4 5 6 7 8 9 10 11 12 13 14 15 16 17 18 19 20 21 22 23 24 25 26 27 28 29 30 31 32 33 34 35 36 37 38 39 40 41 42 43 44 45 46 47 48 49 50 51 52 53 54 55 56 57 58 59 60 61 62 63



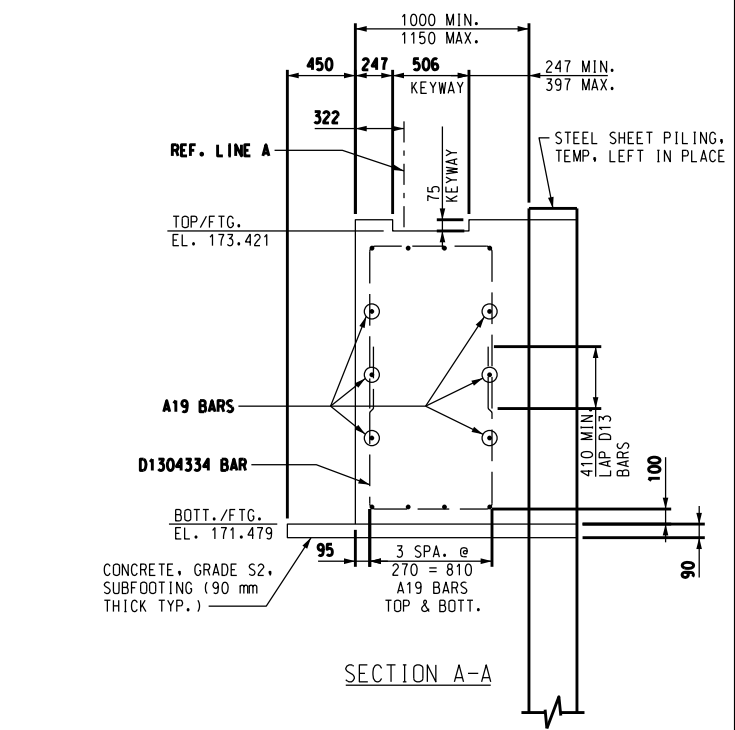
PLAN OF FOOTING (ABUTMENT A)



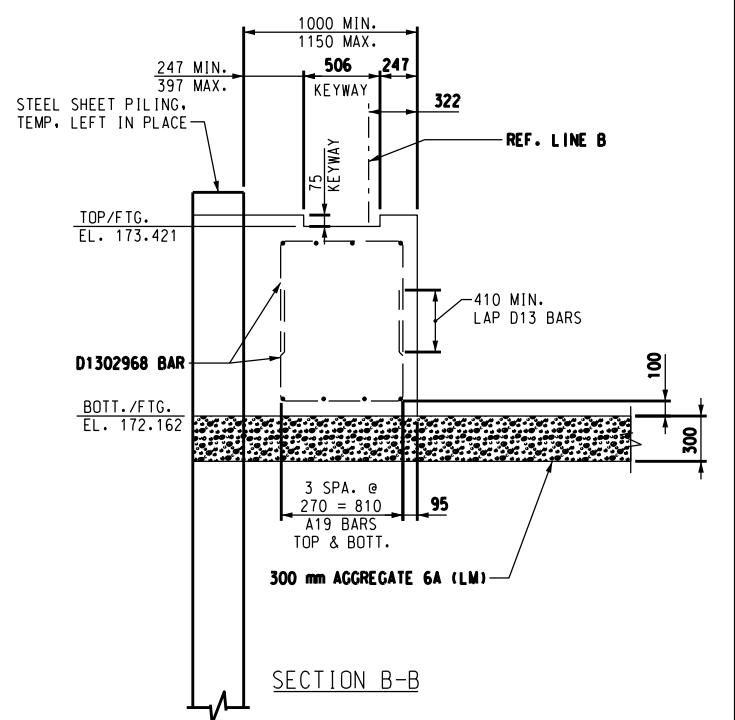
PLAN OF FOOTING (ABUTMENT B)



DETAIL AT KEYWAY



SECTION A-A



SECTION B-B

NOTES:
FOR ABUTMENT A AND B THE MAXIMUM FOUNDATION PRESSURE IS CALCULATED TO BE 278 kPa AVERAGE DEAD LOAD PLUS LIVE LOAD PRESSURE.

SUBSTRUCTURE CONCRETE QUANTITIES	
POUR	AMOUNT
A	59.4 m ³
B	29.9 m ³
TOTALS	89.0 m ³

METRIC
DIMENSIONS ARE IN MILLIMETERS, UNLESS OTHERWISE SHOWN. ELEVATIONS, COORDINATES, CURVE AND ALIGNMENT DATA ARE IN METERS. STATIONS ARE IN KILOMETERS + METERS.

REVISIONS	DSGN BY	E: I: _	7-97
	DR'N BY	J: E: _	7-97
	CK'D BY	C: D: E: _	7-97
	APP'D BY		

SNELL ENVIRONMENTAL GROUP, INC. • A DLZ Company
151 W. CONGRESS, SUITE 328
DETROIT, MICHIGAN 48226
TELEPHONE (313) 961-4040

FEMI TALABI & ASSOCIATES INC.
615 CROSFORD, SUITE 1500, DETROIT, MICHIGAN 48226

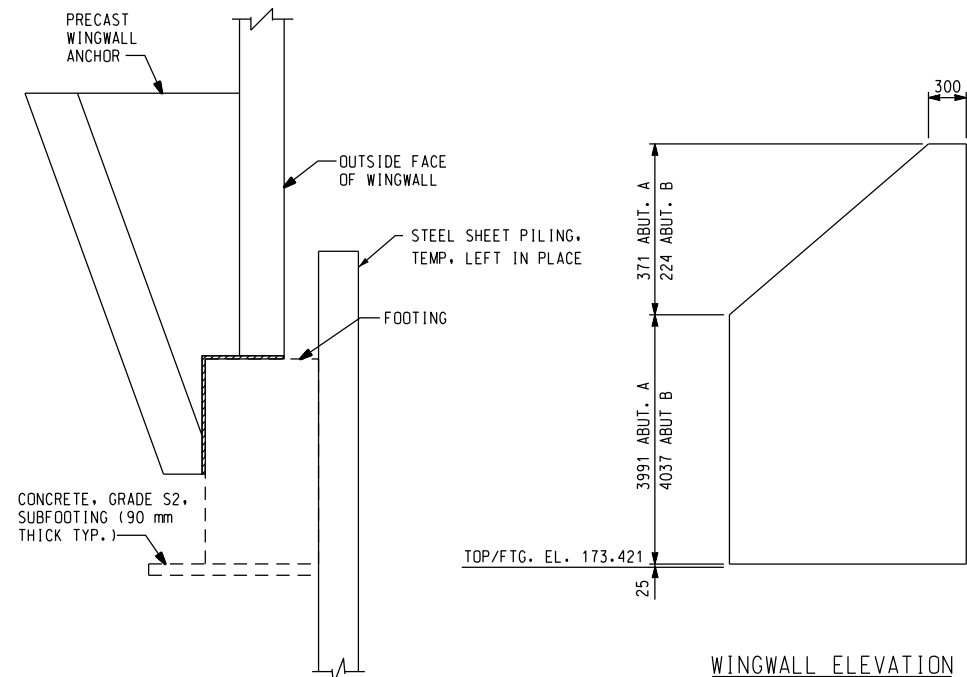
CITY OF DETROIT
MICHIGAN

KORTE AVE.
OVER THE
FOX CREEK

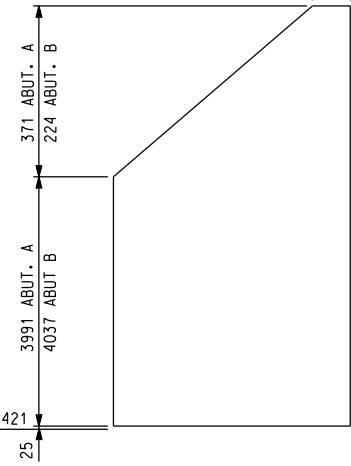
FOOTING DETAILS
SCALE NOT TO SCALE
PROJECT NO. 9641-5160-02
SHEET NO. 5 OF 9

FILE NAME: Q660E10.DGN

60 61 62 63
50 51 52 53 54 55 56 57 58 59
40 41 42 43 44 45 46 47 48 49
30 31 32 33 34 35 36 37 38 39
20 21 22 23 24 25 26 27 28 29
11 12 13 14 15 16 17 18 19
1 2 3 4 5 6 7 8 9 10

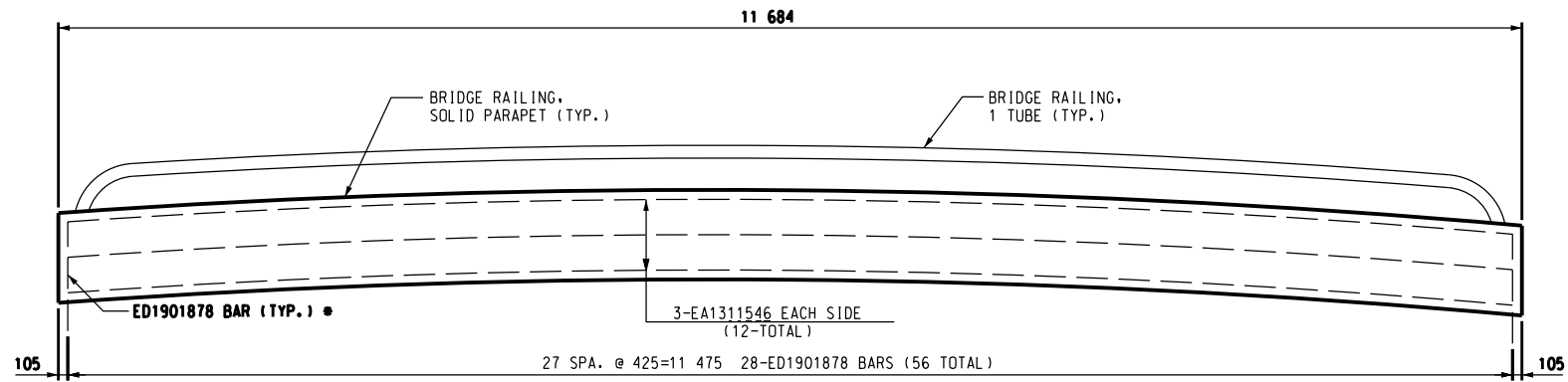


TYPICAL SECTION THRU PRECAST WINGWALL



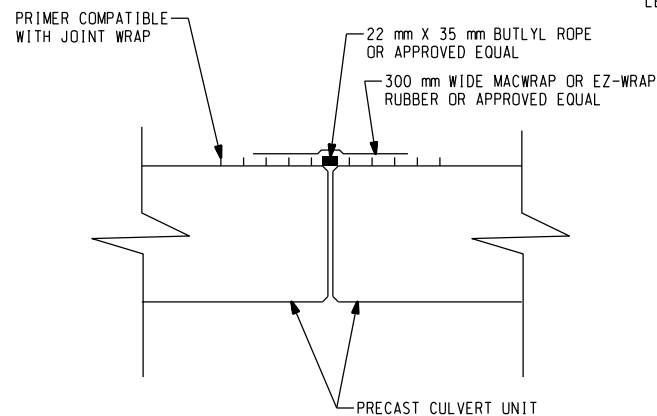
WINGWALL ELEVATION
(SHOWN PARALLEL TO WALL)

LENGTH OF WINGWALL SHALL BE DERIVED FROM PLAN OF FOOTING SHEET 5)

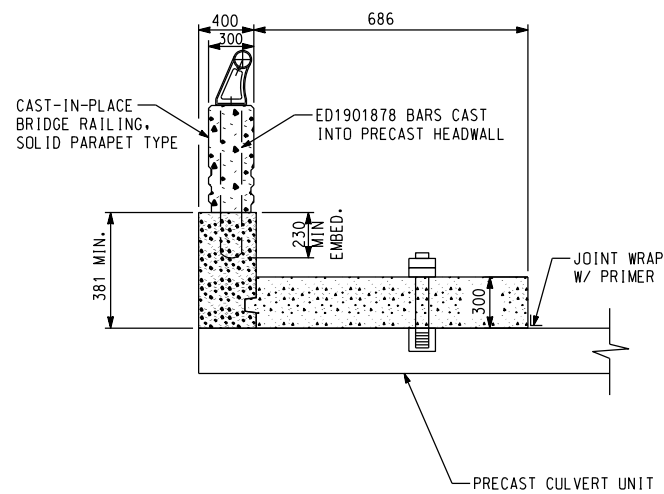


* SHALL BE CAST INTO PRECAST HEADWALL

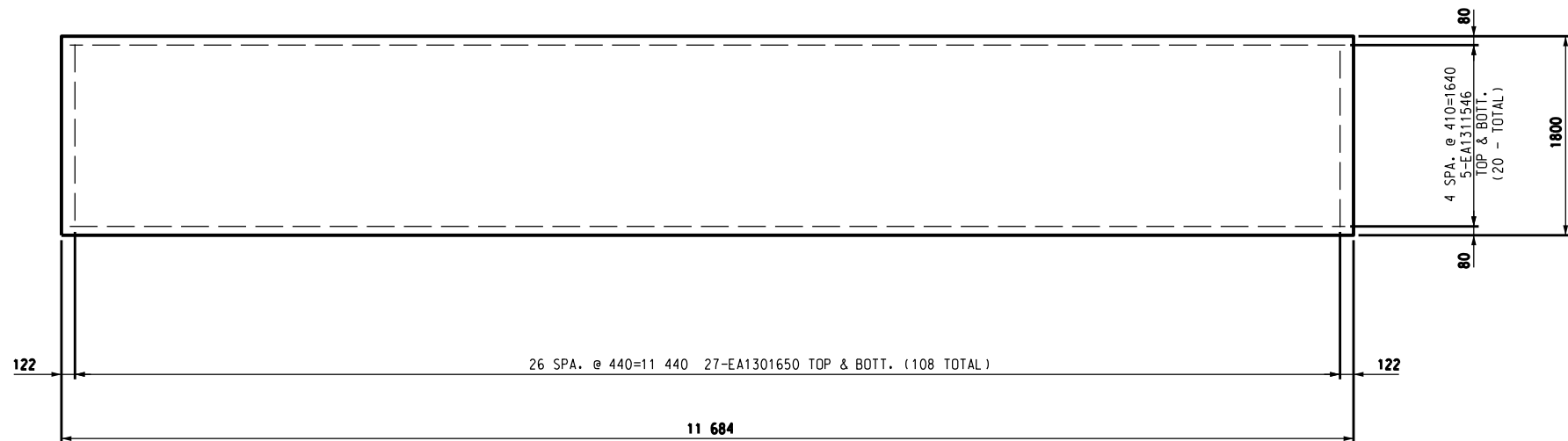
BRIDGE RAILING ELEVATION



STANDARD PRECAST JOINT DETAIL



DETAIL A

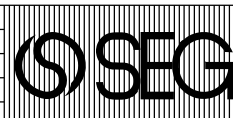


TYPICAL PLAN OF SIDEWALK

METRIC

DIMENSIONS ARE IN MILLIMETERS UNLESS OTHERWISE SHOWN. ELEVATIONS, COORDINATES, CURVE AND ALIGNMENT DATA ARE IN METERS. STATIONS ARE IN KILOMETERS + METERS.

REVISIONS	DSGN BY	H.J.	6-97
	DR'N BY <td>J.E. <td>6-97</td> </td>	J.E. <td>6-97</td>	6-97
	CK'D BY <td>C.D.E. <td>7-97</td> </td>	C.D.E. <td>7-97</td>	7-97
	APP'D BY <td></td> <td></td>		



SNELL ENVIRONMENTAL GROUP, INC. A DLZ Company
151 W. CONGRESS, SUITE 328
DETROIT, MICHIGAN 48226
TELEPHONE (313) 961-4040

F.T.A.
FEMI TALABI & ASSOCIATES INC.
615 CROSWOLD, SUITE 1506, DETROIT, MICHIGAN, 48226



CITY OF DETROIT MICHIGAN

KORTE AVE. OVER THE FOX CREEK

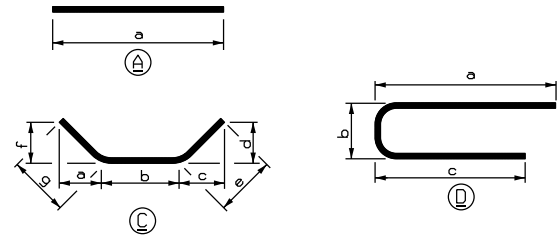
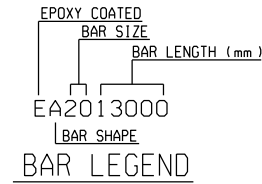
MISCELLANEOUS DETAILS

SCALE NOT TO SCALE
PROJECT NO. 9641-5160-02
SHEET NO. 6 OF 9

FILE NAME: 0606103.DGN

BAR	DIMENSIONS											NO. RED'D	TOTAL MASS	
	a	b	c	d	e	f	g	h	j	k	m			
A1905533	5533												28	346
A1913000	13000												10	291
A1913358	13358												14	418
C1903302	866	2302	0	0	0	500	1000						10	75
C1903557	906	2557	0	0	0	423	1000						10	79
D1302968	1059	850	1059										84	248
D1304334	1742	850	1742										112	482
SUBTOTAL = 1939 kg														
EA1301650	1650												108	177
EA1311546	11546												32	367
* ED1901878	870	138	870										56	235
EPOXY SUBTOTAL = 779 kg														

* SHALL BE CAST INTO PRECAST HEADWALL.



SUMMARY OF QUANTITIES			
ITEM NO.	ITEM DESCRIPTION	UNIT	QUANTITY
1500000	MOBILIZATION, MAX.	Lsum	1
2040005	CURB, REMOVE	m	50
2040013	SIDEWALK, REMOVE	m2	80
2040020	STRUCTURES, REMOVE	Lsum	1
2047102	FENCE, REMOVAL, SALVAGE AND REPLACE	m	20
2050010	EMBANKMENT, CIP	m3	100
2060002	BACKFILL, STRUCTURE, CIP	m3	1200
2060011	EXCAVATION, FOUNDATION	m3	500
2080025	EROSION CONTROL, SILT FENCE	m	40
3020014	AGGREGATE BASE, 140 mm	m2	92
3027000	AGGREGATE, 6A (LM)	m3	42
3050001	BITUMINOUS BASE CRUSHING AND SHAPING	m2	157
4017102	10 973 X 3962 PRECAST CONC THREE-SIDED BOX CULVERT	m	12.8
5020057	BIT MIXTURE 3C	t	30
5020059	BIT MIXTURE 4C	t	28
7040003	STEEL SHEET PILING, TEMP, LEFT IN PLACE	m2	514
7060007	CONCRETE, GRADE D	m3	13
7060010	CONCRETE, GRADE S2, SUBFOOTING	m3	4
7060020	SUBSTRUCTURE CONCRETE	m3	89
7060030	REINFORCEMENT, STEEL	kg	1939
7060031	REINFORCEMENT, STEEL, EPOXY COATED	kg	779
7060250	STRUCTURE NAME PLATE	ea	2
7100001	JOINT WATERPROOFING	m2	7
7110004	BRIDGE RAILING, SOLID PARAPET TYPE	m	24
7110007	BRIDGE RAILING, ONE TUBE	m	24
8027102	MISC. CURB, CONCRETE, DETAIL CD	m	56
8030002	SIDEWALK, CONCRETE, 100 mm	m2	92
8110241	PAVT MRKG, REGULAR DRY, 100 mm, WHITE	m	80
8110242	PAVT MRKG, REGULAR DRY, 100 mm, YELLOW	m	80
8120026	PLASTIC DRUM, LIGHTED, FURN	ea	20
8120027	PLASTIC DRUM, LIGHTED, OPER	ea	20
8120036	BARRICADE, TYPE III, LIGHTED, FURN.	ea	8
8120037	BARRICADE, TYPE III, LIGHTED, OPER.	ea	8
8120060	SIGN, TYPE B TEMPORARY, PRISMATIC RETRFLEC SHEETING	m2	32
8160007	SEEDING, MIXTURE TUF	kg	2
8160020	FERTILIZER, CHEMICAL NUTRIENT, CLASS A	kg	2
8160077	MULCH BLANKET	m2	70

REINFORCEMENT SHALL BE BUNDLED AND TAGGED AS TO THE LOCATION AS SHOWN ON THIS SHEET.

ALL BENDS IN REINFORCING STEEL TO BE MADE ABOUT A PIN OF THE MINIMUM DIAMETER ALLOWED BY THE STANDARD SPECIFICATIONS.

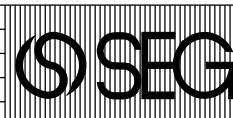
TOLERANCES IN CUTTING AND BENDING BARS ARE AS ESTABLISHED IN THE MANUAL OF STANDARD PRACTICE OF THE CONCRETE REINFORCING STEEL INSTITUTE AND DETAILING MANUAL OF THE AMERICAN CONCRETE INSTITUTE.

WHERE FIELD CUTTING OF EPOXY BARS IS REQUIRED, THE CONTRACTOR SHALL REPAIR THE EPOXY COATING AT THE CUT END AS PROVIDED FOR IN STANDARD SPECIFICATION 706.03.E.8.

METRIC

DIMENSIONS ARE IN MILLIMETERS UNLESS OTHERWISE SHOWN. ELEVATIONS, COORDINATES, CURVE AND ALIGNMENT DATA ARE IN METERS. STATIONS ARE IN KILOMETERS + METERS.

REVISIONS	DSGN BY	F.T.	7-97
	DR'N BY	J.E.	7-97
	CK'D BY	C.D.P.	7-97
	APP'D BY		



SNELL ENVIRONMENTAL GROUP, INC. A DLZ Company
151 W. CONGRESS, SUITE 328
DETROIT, MICHIGAN 48226
TELEPHONE (313) 961-4040

F.T.A. FEMI TALABI & ASSOCIATES INC.
615 CRISWOLD, SUITE 1505, DETROIT, MICHIGAN, 48226



CITY OF DETROIT MICHIGAN

KORTE AVE. OVER THE FOX CREEK

STEEL REINFORCEMENT AND QUANTITIES

SCALE NOT TO SCALE
PROJECT NO. 9641-5160-02
SHEET NO. 8 OF 9

1 2 3 4 5 6 7 8 9 10 11 12 13 14 15 16 17 18 19 20 21 22 23 24 25 26 27 28 29 30 31 32 33 34 35 36 37 38 39 40 41 42 43 44 45 46 47 48 49 50 51 52 53 54 55 56 57 58 59 60 61 62 63

MISCELLANEOUS QUANTITIES		
ITEM	UNIT	AMOUNT
BARRICADE, TYPE III, LIGHTED, OPER	ea	8
BARRICADE, TYPE III, LIGHTED, FURN	ea	8
PLASTIC DRUM, LIGHTED, FURN	ea	20
PLASTIC DRUM, LIGHTED, OPER	ea	20
SIGN, TYPE B, TEMPORARY, PRISMATIC RETROREFLECTIVE SHEETING	m2	32

SIGN TYPE LEGEND	
▲	SIGN, TYPE B
⇄	TYPE III BARRICADE

SIGN CHART				
I.D. NUMBER	SIGN	SIGN DESIGNATION	SIZE	NUMBER REQUIRED
1.		W20-3	1200X1200	1.
2.		W20-2	1200X1200	5.
3.		W20-3	1200X1200	1.
4.		D3-1 M6-1b	900X300 525X375	1.
5.		D3-1 M6-1b	900X300 525X375	1.
6.		R11-4 M4-10	1500X750 1200X450	1.
7.		R11-2 M4-10	1200X750 1200X450	1.
8.		D3-1 M4-9	900X300 750X600	4.
9.		D3-1 M4-9	900X300 750X600	7.
10.		D3-1 M4-9	900X300 750X600	2.
11.		M4-8a	600X450	2.
12.		R11-2	1200X750	1.
13.		W20-3 D3-1	1200X1200 900X300	4.

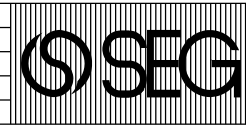


DETOUR PLAN KORTE AVE.

NOTES:
 THE CONTRACTOR WILL FURNISH AND ERECT THE SIGNS LISTED ON THE SIGN CHART AT THE LOCATIONS SHOWN.
 AS DIRECTED BY THE ENGINEER, THE CONTRACTOR SHALL PROVIDE AND MAINTAIN ANY ADDITIONAL SIGNS, BARRICADES AND LIGHTS WITHIN THE PROJECT TO PROTECT THE TRAFFIC AND WORK AREA.
 THE CONTRACTOR SHALL PLACE SANDBAGS ON BARRICADES TO PREVENT MOVEMENT OF THE BARRICADES. THE CONTRACTOR SHALL ATTACH AND MAINTAIN THREE (3) STEADY BURN AMBER LIGHTS (TYPE "C") ON EACH OF THE BARRICADES.
 THE CONTRACTOR SHALL ATTACH AND MAINTAIN ONE (1) BATTERY OPERATED AMBER FLASHER LIGHTS (TYPE "A") AND ONE (1) ORANGE FLUORESCENT DAY-GLO FLAG ON EACH ADVANCE CONSTRUCTION SIGN (SIGNS ①, ② & ③).
 TRAFFIC CONTROL SIGNS WHICH ARE REMOVED FROM THE VICINITY OF THE PROJECT DUE TO INTERFERENCE SHALL BE TURNED OVER TO THE CITY. UPON COMPLETION OF THE PROJECT, TRAFFIC CONTROL SIGNS AND STREET NAME SIGNS WILL BE RESET IN THEIR PROPER POSITION BY THE CONTRACTOR.
 THE CONTRACTOR SHALL NOT BEGIN ANY OPERATIONS ON THE PROJECT UNTIL ALL OF THE SIGNS HAVE BEEN POSITIONED AND FLASHER LIGHTS AND FLAGS ARE ATTACHED TO ALL REQUIRED SIGNS AND BARRICADES.
 ANY OTHER SIGNS WHICH THE CONTRACTOR MAY BE REQUIRED TO FURNISH SHALL CONFORM TO THE MICHIGAN MANUAL OF UNIFORM TRAFFIC CONTROL DEVICES.
 ALL CONSTRUCTION SIGNS SHALL CONFORM TO MDT 1996 STANDARD SPECIFICATIONS FOR CONSTRUCTION 812.02.B.1.

METRIC
 DIMENSIONS ARE IN MILLIMETERS UNLESS OTHERWISE SHOWN. ELEVATIONS, COORDINATES, CURVE AND ALIGNMENT DATA ARE IN METERS. STATIONS ARE IN KILOMETERS + METERS.

REVISIONS	DSGN BY	E.I.:	7-97
	DR'N BY	J.E.:	7-97
	CK'D BY	C.D.P.:	7-97
	APP'D BY		



SNELL ENVIRONMENTAL GROUP, INC. • A DLZ Company
 151 W. CONGRESS, SUITE 328
 DETROIT, MICHIGAN 48226
 TELEPHONE (313) 961-4040

FTA
 FEMI TALABI & ASSOCIATES INC.
 615 CRAWFORD, SUITE 1505, DETROIT, MICHIGAN, 48226



CITY OF DETROIT
 MICHIGAN
 KORTE AVE. OVER

DETOUR ROUTE
 DETAILS

SCALE	NOT TO SCALE
PROJECT NO.	9641-5160-02
SHEET NO.	9 OF 9

FILE NAME: 02101402.DGN

