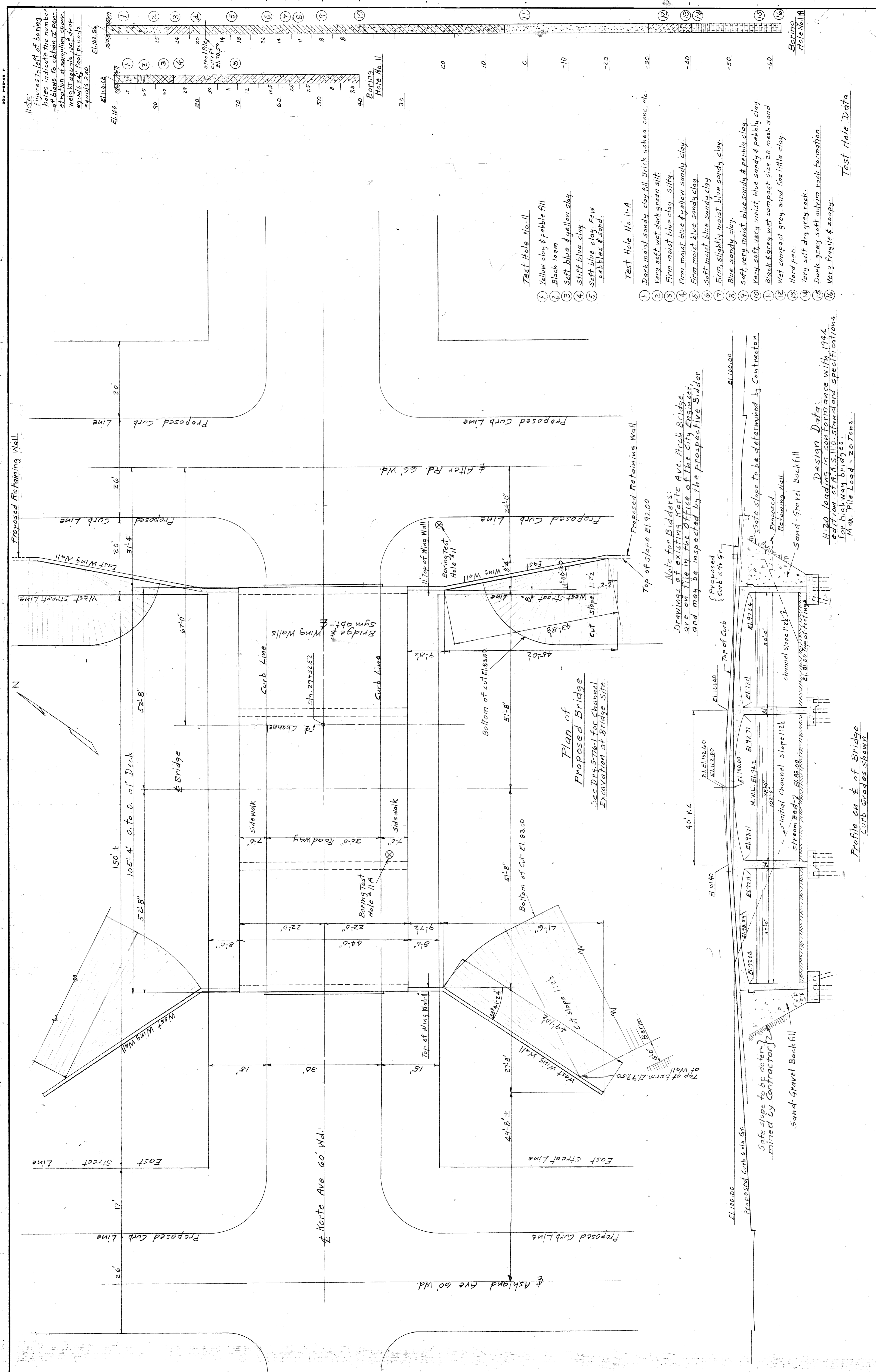
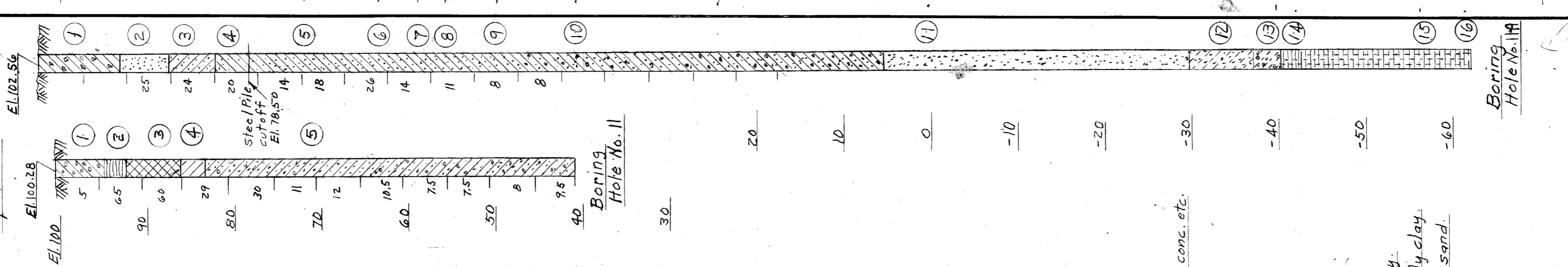


1-BP 10-22-45
1-n 11/17

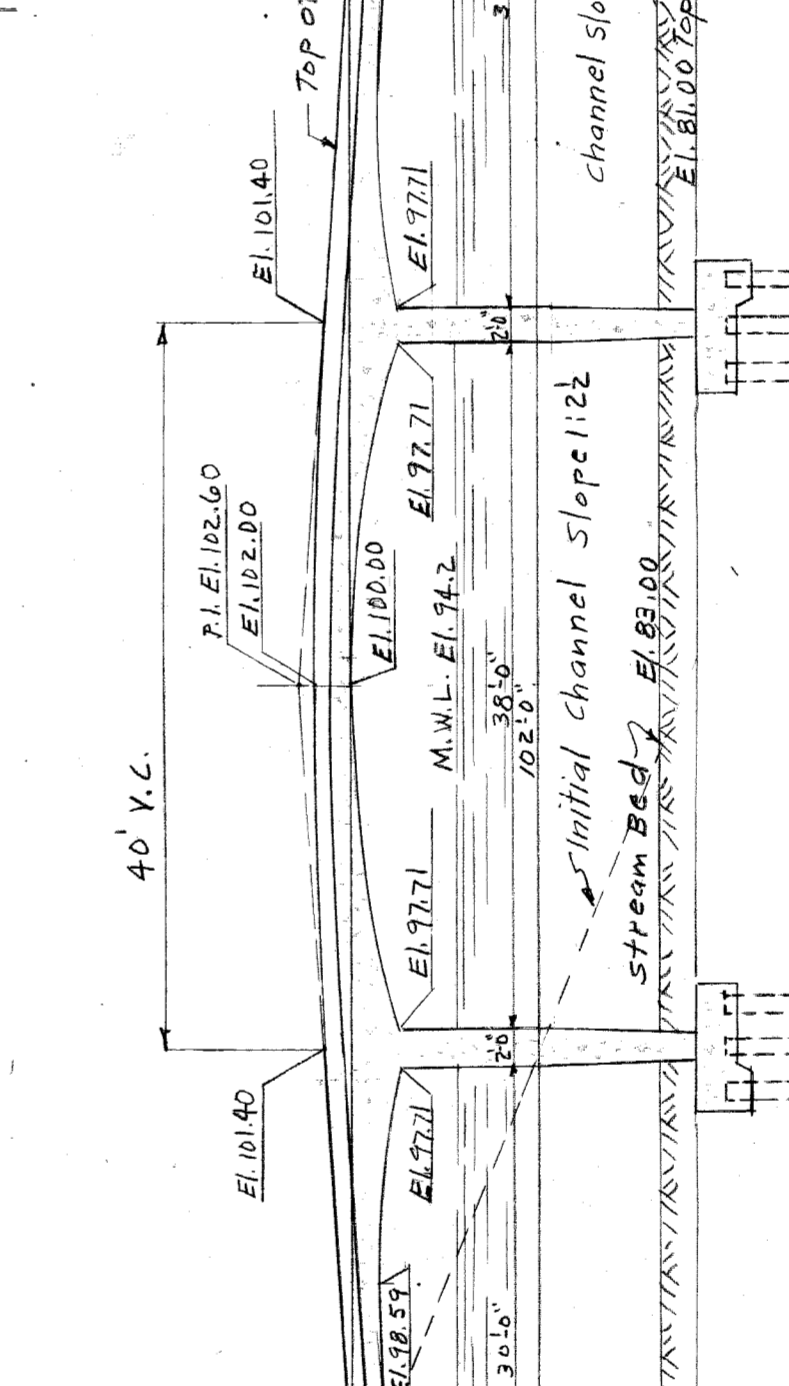


Note:
Figures to left of boring holes indicate the number of blows to obtain 12 penetration of sampling spoon. Weight equals 160 drop equals 24 foot pounds equals 320.



Note for Bidders:
Drawings of existing Korte Ave. Arch Bridge are on file in the Office of the City Engineer and may be inspected by the prospective Bidder.

Design Data:
4:20 loading in conformance with 1944 edition of A.S.H.O. standard specifications for highway bridges.
Max. File Load = 20 Tons.



REVISIONS		DATE		BY	
NO.	DESCRIPTION	DATE	BY	DATE	BY

DESIGNED BY	P. Schuch
DRAWN BY	OSBORN
TRACED BY	
CHECKED BY	H.O. Little

APPROVED:	J.P. Barton	CITY ENGINEER
ENGINEER OF 1919	J. Lawrence	CITY ENGINEER

CITY OF DETROIT	FOX CREEK DISTRICT
DEPARTMENT OF PUBLIC WORKS	OPEN CHANNEL IMPROVEMENT
CITY ENGINEERS OFFICE	KORTE AVE. BRIDGE
FOR THE DEPARTMENT OF PUBLIC WORKS	GENERAL PLAN

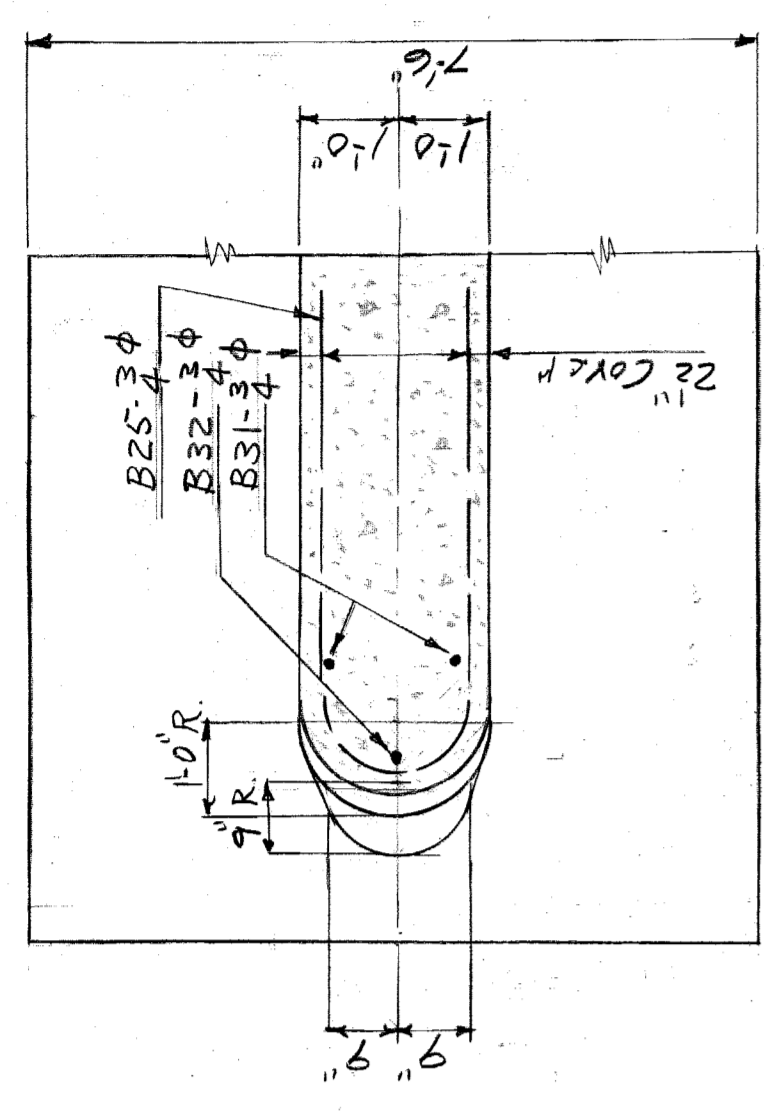
SHEET	OF	SHEETS
JOB NO.	67-1A	
DRWG NO.	S-776-1	
DATE	OCT. 23, 1945	

SCALE 3" = 10'

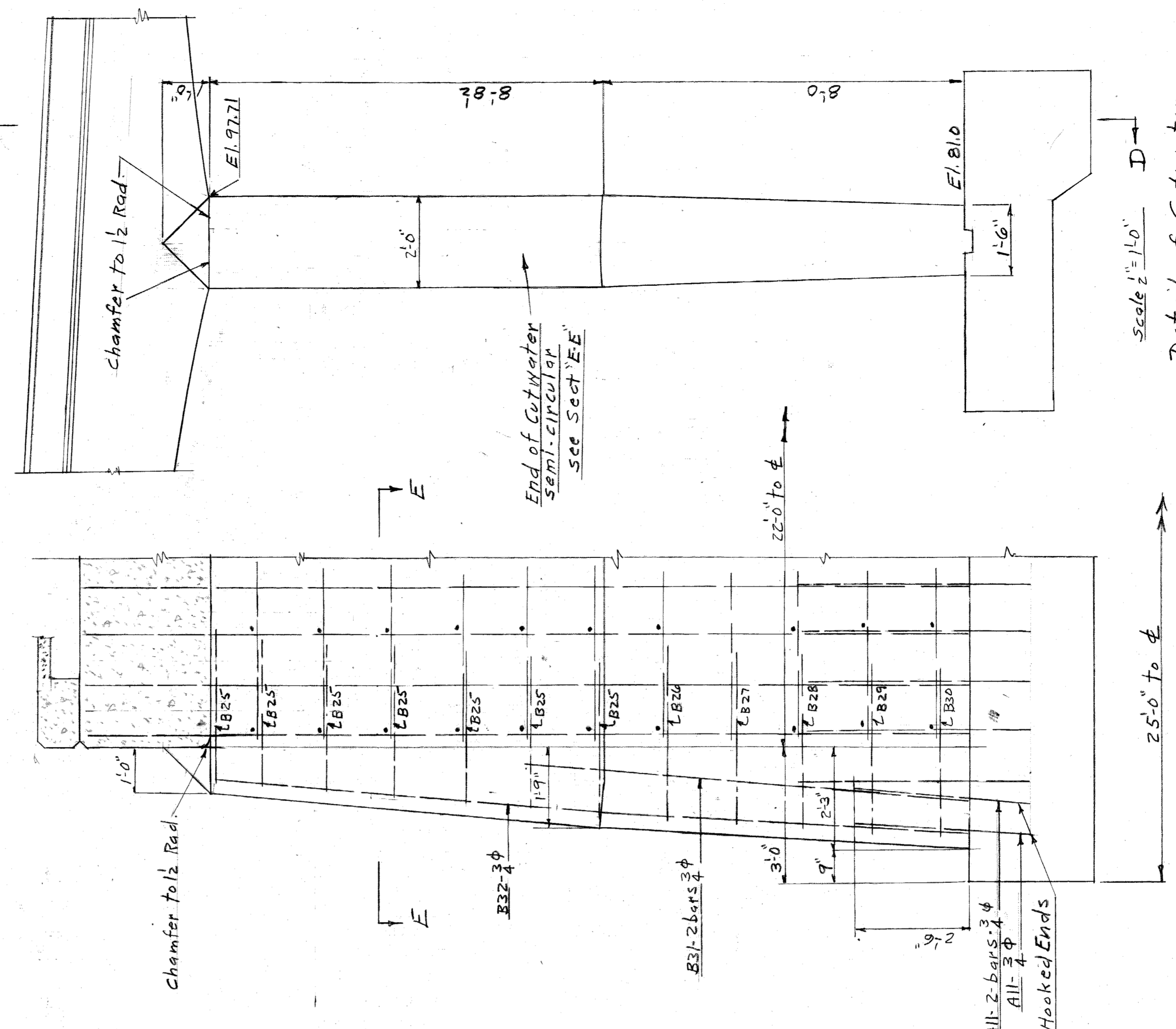
BOOK NO.

DRAWING # 4

1-B/P 10-23-45
1-BP 11/3/47

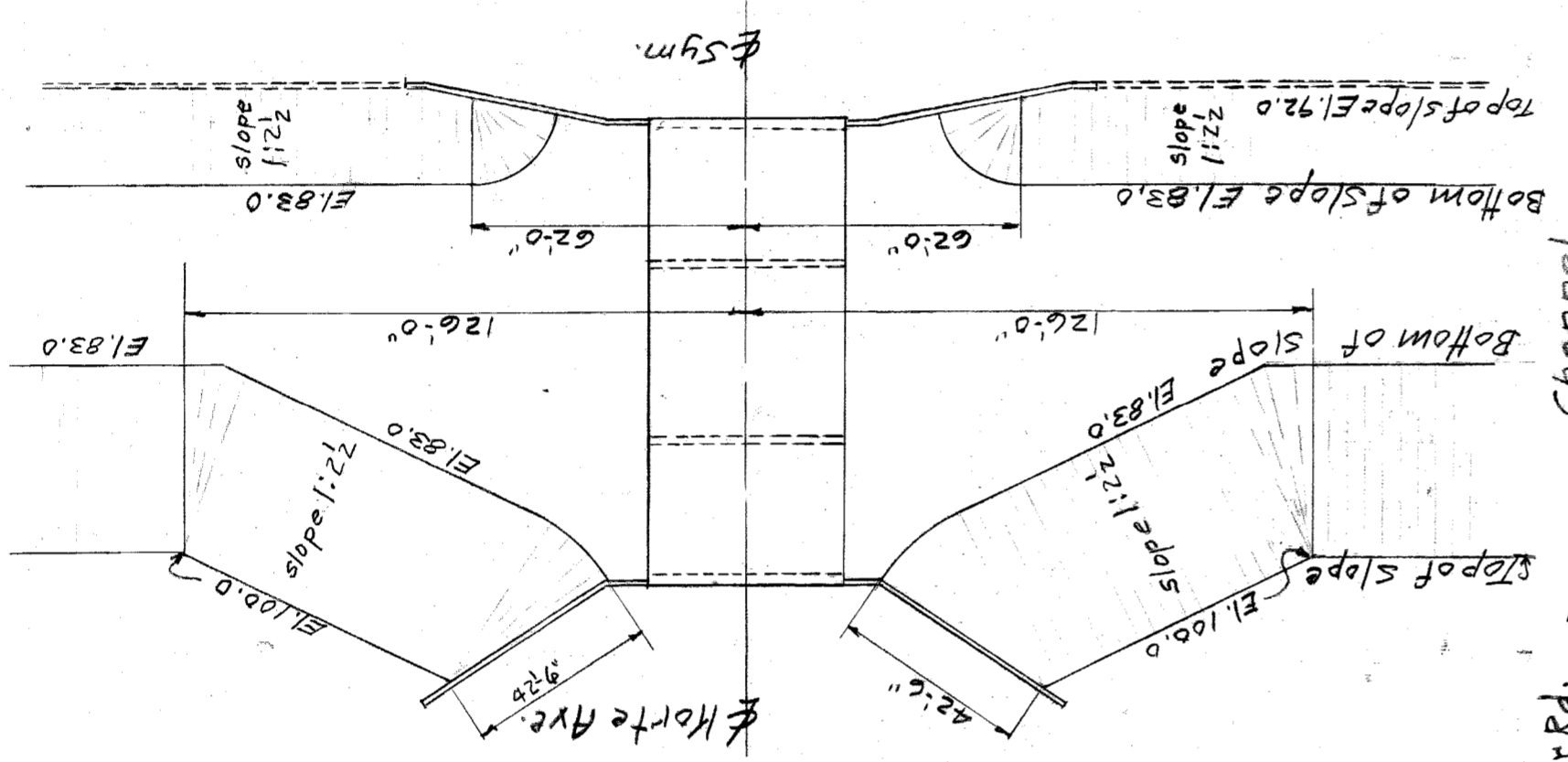


Plan Sect 'EE'
Scale 1/2" = 1'-0"

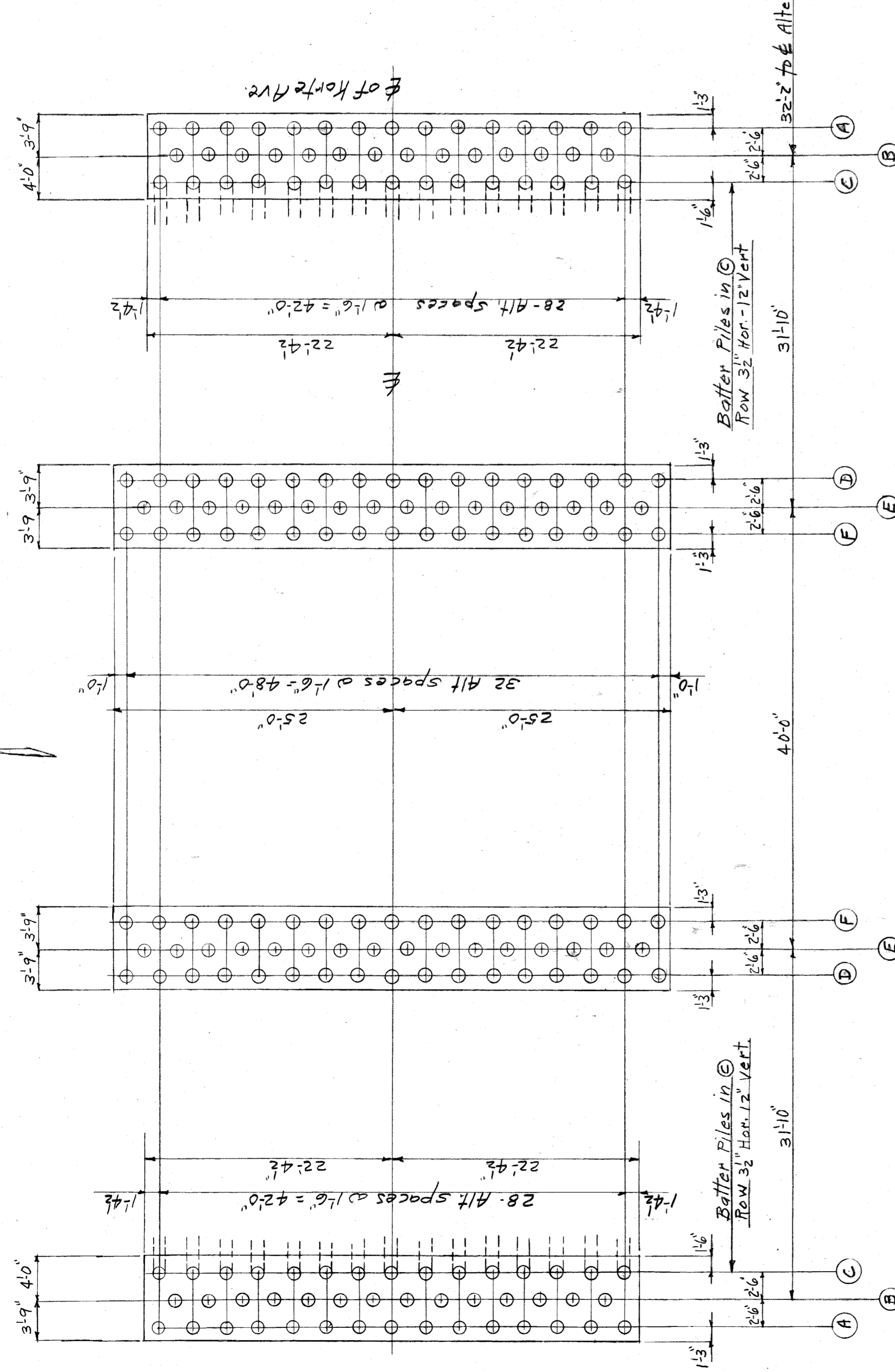


Sect 'D-D'
Scale 1/2" = 1'-0"

Scale 1/2" = 1'-0"
Detail of Cutwater
At Interior Pier Ends
Note: See DWG. S-776-3 for further Pier Details

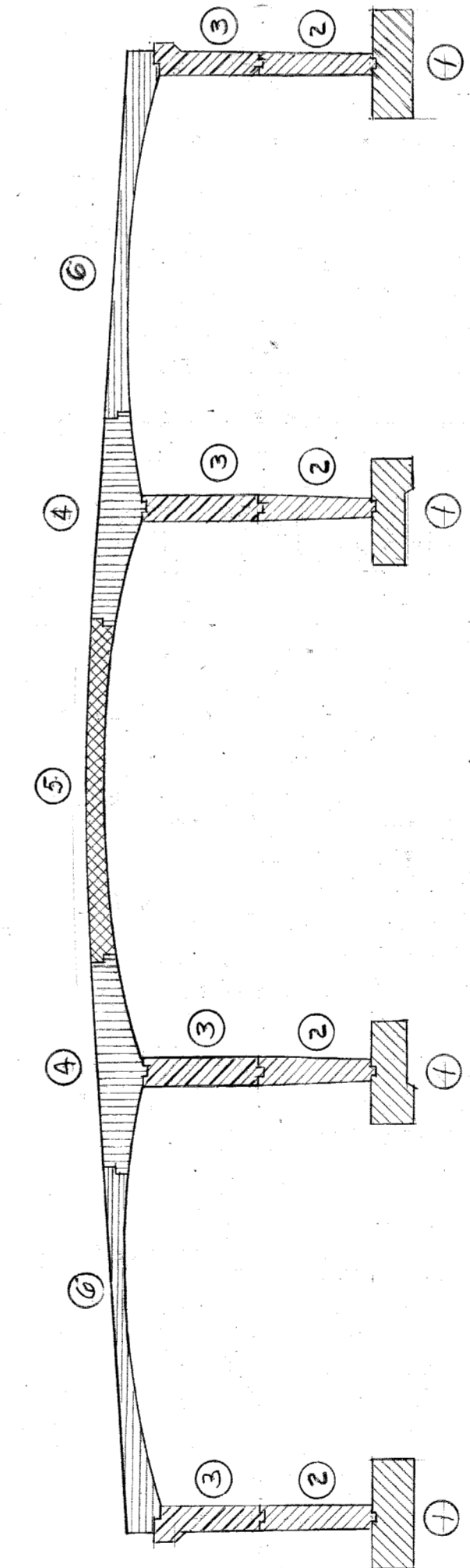


Excavation At Bridge Site
Scale 1/2" = 4'-0"



Foundation & Pile Plan
Scale 1/8" = 1'-0"

Note: Pile cutoff, E1.79.58.
Piles for Wing Walls not shown see DWG. S-776-7 & S-776-8
All Piles in Bridge Foundations shown on this drawing
shall be driven to safely sustain a bearing load
of 20 Tons each.

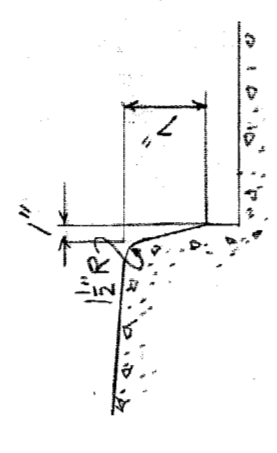
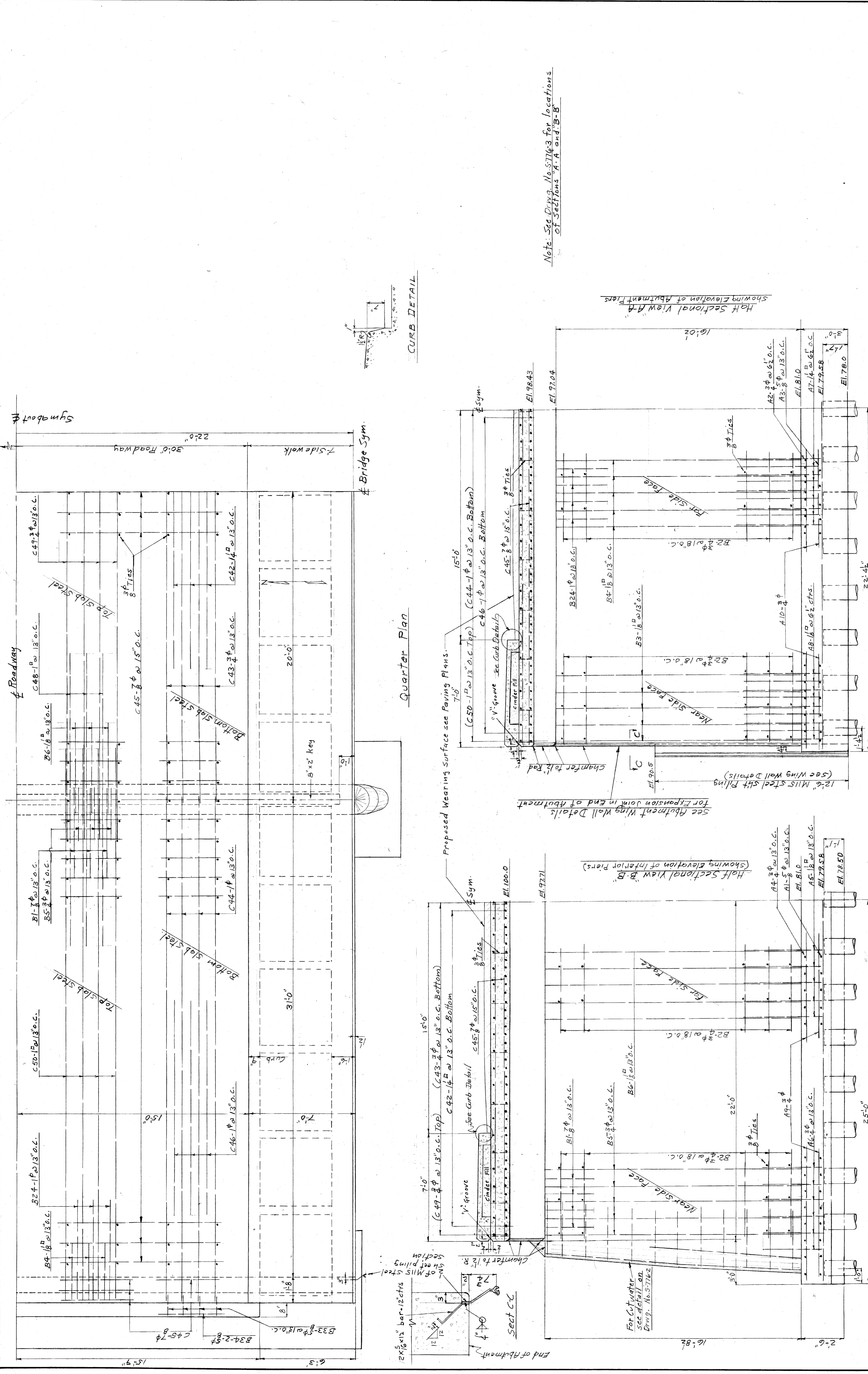


Scale 3/2" = 1'-0"
Concrete Placement Schedule
Order of placement as follows:
1st Operation
3rd "
4th "
5th "
6th "

SHEET OF SHEETS		JOB NO. 67-1-A		DRWG NO. S-776-2		DATE OCT. 23, 1945	
FOX CREEK DISTRICT OPEN CHANNEL IMPROVEMENT				KORTE AVE. BRIDGE FOUNDATION PLAN-PIER DETAILS - 3			
CITY OF DETROIT DEPARTMENT OF PUBLIC WORKS CITY ENGINEERS OFFICE				FOR THE DEPARTMENT OF PUBLIC WORKS			
DESIGNED BY	APPROVED	TRACED BY	CHECKED BY	ENGINEER OF	CITY ENGINEER	PAGE	
DESIGNED BY R. H. Hullop	APPROVED J. L. Barton	TRACED BY H. O. Litus	CHECKED BY H. O. Litus	ENGINEER OF 04417	CITY ENGINEER	SCALE AS NOTED	
DESIGNER	DRAWN	TRACED	CHECKED	DATE	DATE	DATE	DATE
REVISIONS				DRAW #4			

10-23-45

1-20-48 P



CURB DETAIL

Quarter Plan

Note: See Dwg. No. 57163 for locations of Sections A-A and B-B

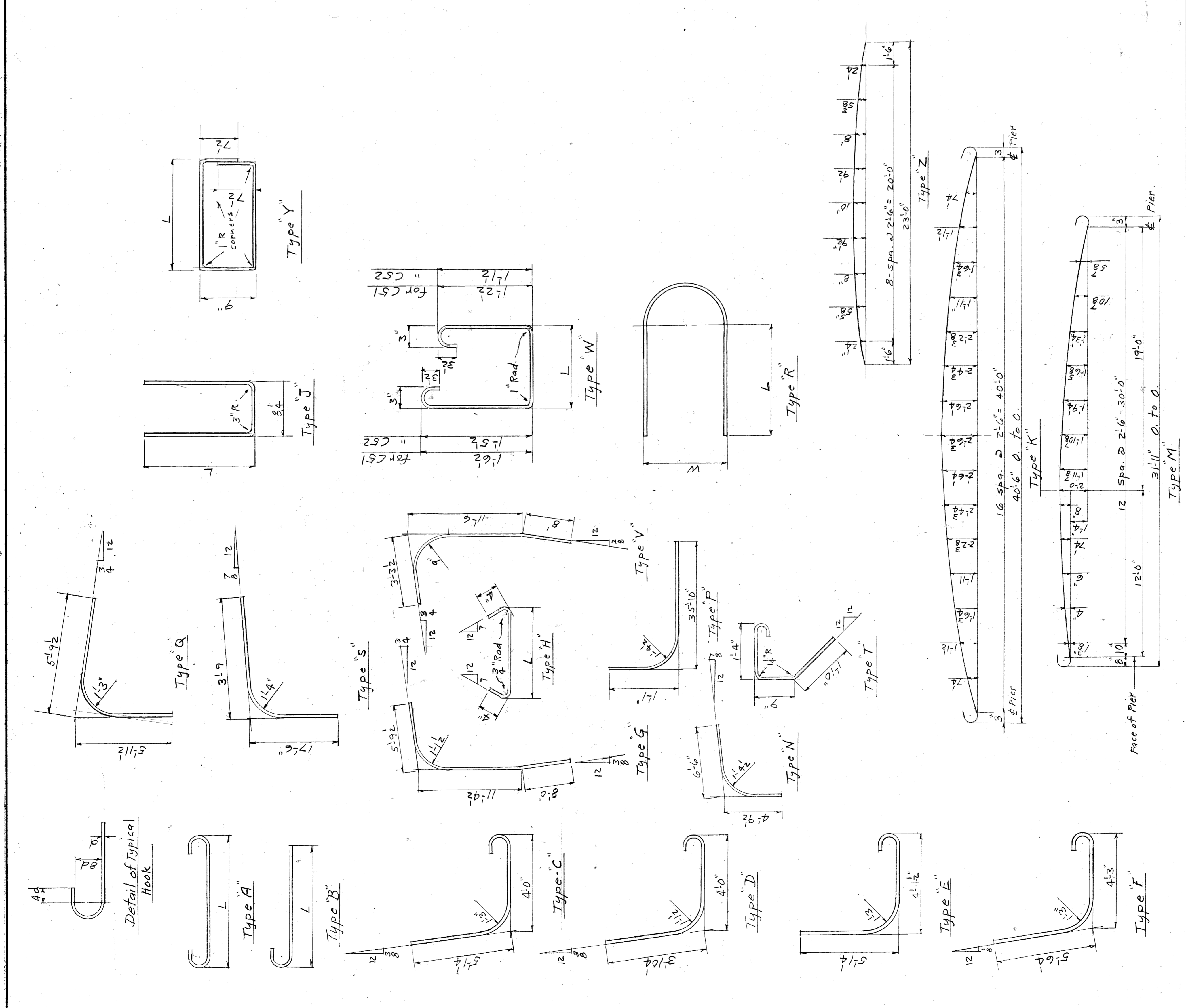
Half Sectional View A-A Showing Elevation of Abutment Piers

Half Sectional View B-B (Showing Elevation of Interior Piers)

<p>CITY OF DETROIT DEPARTMENT OF PUBLIC WORKS CITY ENGINEERS OFFICE</p>		<p>FOX CREEK DISTRICT OPEN CHANNEL IMPROVEMENT</p>	
<p>THE DEPARTMENT OF PUBLIC WORKS</p>		<p>KORTE AVE. BRIDGE DECK AND PIER DETAILS-2</p>	
<p>APPROVED: <i>J. L. Barton</i> ENGINEER OF PUBLIC WORKS</p>	<p>DESIGNED BY: <i>R. Schultz</i></p>	<p>DATE: OCT. 23, 1945.</p>	<p>SCALE: 3/8" = 1'-0"</p>
<p>DRAWN BY: <i>R. A. Speck</i></p>	<p>TRACED BY: <i>H. O. Titus</i></p>	<p>JOB NO. 67-1-A</p>	<p>DRWG NO. S-7764</p>
<p>CHECKED BY: <i>H. O. Titus</i></p>	<p>REVISIONS</p>	<p>BOOK NO.</p>	<p>DRAWING # 4</p>

1-B/P 10-23-45

Mark	No.	Size	Length	Type	Distance L	Distance W	Remarks	Mark	No.	Size	Length	Type	Distance L	Distance W	Remarks
C6	30	3/8"	1'-9"	H	1'-0"		Deck, Center Span	A1	94	5/8"	8'-6"	A	7'-0"		Interior Footings
C7	30	3/8"	1'-9"	H	1'-1"		"	A2	166	3/4"	9'-0"	A	7'-3"		Abutment
C8	30	3/8"	2'-0"	H	1'-24"		"	A3	84	5/8"	8'-9"	A	7'-3"		"
C9	30	3/8"	2'-0"	H	1'-32"		"	A4	94	3/4"	8'-0"	B	7'-0"		Interior
C10	30	3/8"	2'-3"	H	1'-54"		"	A5	86	1/8"	9'-9"	C			"
C11	30	3/8"	2'-3"	H	1'-7"		"	A6	86	3/4"	8'-3"	D			"
C12	30	3/8"	2'-6"	H	1'-9"		"	A7	162	1/4"	10'-6"	F			Abutment
C13	30	3/8"	2'-9"	H	1'-11"		"	A8	162	1/8"	10'-0"	E			"
C14	30	3/8"	2'-9"	H	2'-18"		"	A9	20	3/4"	4'-6"	straight			Interior
C15	30	3/8"	3'-0"	H	2'-38"		"	A10	22	3/4"	4'-3"	"			Abutment
C16	30	3/8"	3'-3"	H	2'-64"		"	A11	12	3/4"	4'-9"	B	3'-1/2"		Interior
C17	30	3/8"	3'-6"	H	2'-98"		"	B1	80	7/8"	1'-13"	Q			Interior Piers
C18	30	3/8"	3'-3"	H	2'-43"		Deck, End spans	B2	88	3/4"	4'-3"	straight			Abutment Interior
C19	30	3/8"	3'-0"	H	2'-18"		"	B3	82	1/8"	1'-0"	B	1'-7"		Abut. Piers.
C20	30	3/8"	2'-9"	H	1'-14"		"	B4	82	1/8"	20'-9"	S			"
C21	30	3/8"	2'-6"	H	1'-84"		"	B5	82	3/4"	22'-6"	V			Interior Piers
C22	30	3/8"	2'-3"	H	1'-62"		"	B6	82	1/8"	24'-6"	G			"
C23	30	3/8"	2'-0"	H	1'-42"		"	B7	252	3/8"	2'-3"	H	1'-58"		"
C24	30	3/8"	1'-9"	H	1'-16"		"	B8	42	3/8"	2'-3"	H	1'-48"		"
C25	30	3/8"	1'-9"	H	1'-16"		"	B9	42	3/8"	2'-0"	H	1'-37"		"
C26	30	3/8"	1'-6"	H	1'-12"		"	B10	42	3/8"	2'-0"	H	1'-28"		"
C27	30	3/8"	1'-6"	H	1'-8"		"	B11	42	3/8"	1'-9"	H	1'-12"		"
C28	30	3/8"	1'-6"	H	1'-8"		"	B12	42	3/8"	1'-9"	H	1'-08"		"
C29	30	3/8"	1'-6"	H	1'-8"		"	B13	42	3/8"	2'-0"	H	1'-2		Abutment
C30	30	3/8"	1'-6"	H	1'-8"		"	B14	42	3/8"	2'-0"	H	1'-4		"
C31	30	3/8"	1'-6"	H	1'-8"		"	B15	42	3/8"	1'-9"	H	1'-2		"
C32	60	3/8"	1'-6"	H	1'-8"		"	B16	42	3/8"	1'-9"	H	1'-2		"
C33	30	3/8"	1'-6"	H	1'-8"		"	B17	42	3/8"	1'-9"	H	1'-4		"
C34	30	3/8"	1'-6"	H	1'-8"		"	B18	42	3/8"	1'-9"	H	1'-4		"
C35	30	3/8"	1'-6"	H	1'-8"		"	B19	42	3/8"	1'-9"	H	1'-07"		"
C36	30	3/8"	1'-6"	H	1'-8"		"	B20	42	3/8"	1'-9"	H	1'-08"		"
C37	30	3/8"	1'-6"	H	1'-8"		"	B21	42	3/8"	1'-9"	H	1'-08"		"
C38	30	3/8"	1'-9"	H	1'-8"		"	B22	42	3/8"	1'-9"	H	1'-04"		"
C39	30	3/8"	1'-9"	H	1'-8"		"	B23	42	3/8"	1'-9"	H	1'-0		"
C40	30	3/8"	2'-0"	H	1'-28"		"	B24	80	1/4"	10'-9"	N			"
C41	60	3/8"	2'-0"	H	1'-17"		"	B25	28	3/4"	7'-6"	R	2'-6"	17	Interior
C42	40	1/4"	2'-3"	Z			Deck, Center Span	B26	4	3/4"	8'-3"	R	3'-0"	16	"
C43	41	3/4"	4'-9"	K			"	B27	4	3/4"	8'-3"	R	3'-0	148	"
C44	82	1/4"	3'-4"	M			Deck, End Spans	B28	4	3/4"	8'-0"	R	3'-0	137	"
C45	170	7/8"	4'-6"	straight			Deck	B29	4	3/4"	8'-0"	R	3'-0	128	"
C46	80	1/4"	1'-4"	"			Decks, End Spans	B30	4	3/4"	7'-9"	R	3'-0	112	"
C48	80	1/4"	1'-0"	straight			over Interior Piers	B31	8	3/4"	10'-0"	straight			"
C49	41	3/4"	4'-5"	"			Deck, Center Span	B32	4	3/4"	16'-9"	"			"
C50	82	1/4"	3'-6"	P			Deck, End Spans	B33	60	5/8"	4'-6"	T			Abutment
C51	170	1/2"	4'-9"	W	1'-3		Sidewalk Fascia	B34	4	5/8"	3'-0"	straight			"
C52	170	1/2"	3'-9"	W	6		Sidewalk Curb	C1	15	3/8"	1'-6"	H	9/4		Deck Center span
C53	60	1/2"	18'-9"	straight			Sidewalk Curb & Fascia	C2	30	3/8"	1'-6"	H	9/8		"
D1	40	3/4"	8'-3"	J	3'-11"		Flailing Posts	C3	30	3/8"	1'-6"	H	108		"
D2	60	3/8"	4'-0"	Y	1'-1"		"	C4	30	3/8"	1'-6"	H	102		"
D3	12	3/8"	7'-0"	Y	2'-68"		"	C5	30	3/8"	1'-9"	H	114		"
D4	16	3/4"	8'-9"	J	4'-2"		"								"



CITY OF DETROIT
DEPARTMENT OF PUBLIC WORKS
CITY ENGINEERS OFFICE

DESIGNED BY: R. Shulhof
DRAWN BY: [Signature]
TRACED BY: [Signature]
CHECKED BY: H.O. Sitka

FOX CREEK DISTRICT
OPEN CHANNEL IMPROVEMENT

KORTE AVE. BRIDGE
DECK AND PIER DETAILS-4

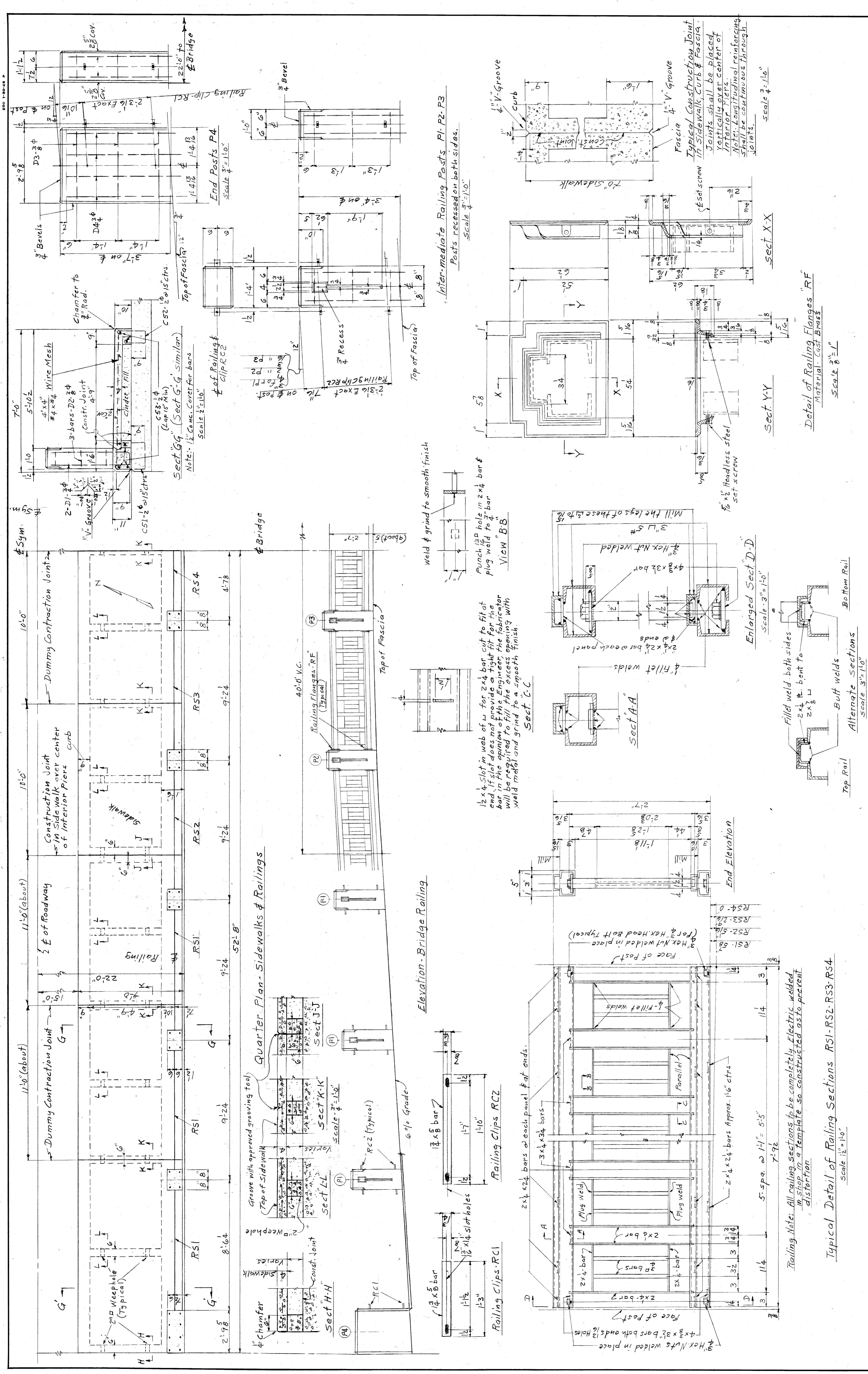
APPROVED: [Signature]
ENGINEER OF DESIGN
CITY ENGINEER

REVISIONS

NO.	DATE	DESCRIPTION

SHEET OF SHEETS
JOB NO. 67-1-A
DRWG NO. S776-5
DATE OCT 23, 1945

SCALE No. scale
Draw # 4



SHEET — OF — SHEETS		JOB NO. 671-A		DRWG NO. S-776-6		DATE OCT. 23, 1945.	
FOX CREEK DISTRICT OPEN CHANNEL IMPROVEMENT				KORTE AVE. BRIDGE SIDEWALKS-CURBS AND RAILINGS			
CITY OF DETROIT DEPARTMENT OF PUBLIC WORKS CITY ENGINEERS OFFICE				FOR THE DEPARTMENT OF PUBLIC WORKS			
APPROVED:	<i>J. L. Bantam</i>			DESIGNED BY:	<i>P. Schuller</i>		
ENGINEER OF DESIGN:	<i>W. J. Quire</i>			DRAWN BY:	<i>W. J. Quire</i>		
CITY ENGINEER:	<i>H. O. Jeter</i>			TRACED BY:	<i>H. O. Jeter</i>		
REVISIONS	DATE	BY	DESCRIPTION	DATE	BY	DESCRIPTION	DATE

