

KLENK AVE. BRIDGE OVER FOX CREEK DEMOLITION AND RECONSTRUCTION

THE ENVIRONMENTAL PROTECTION AND MAINTENANCE DEPARTMENT

CITY OF DETROIT
ENVIRONMENTAL PROTECTION AND MAINTENANCE DEPARTMENT
CITY ENGINEERING DIVISION

RECOMMENDED FOR APPROVAL

J. F. Crane / T.E.G.M. 4/25/79 W. R. Samson 4/24/79
ENGINEER OF INSPECTION DATE HEAD ENGINEER DATE

APPROVED

J. Cant 4/23/79 Frankella 4-24-79
ASSISTANT CITY ENGINEER DATE CITY ENGINEER DATE

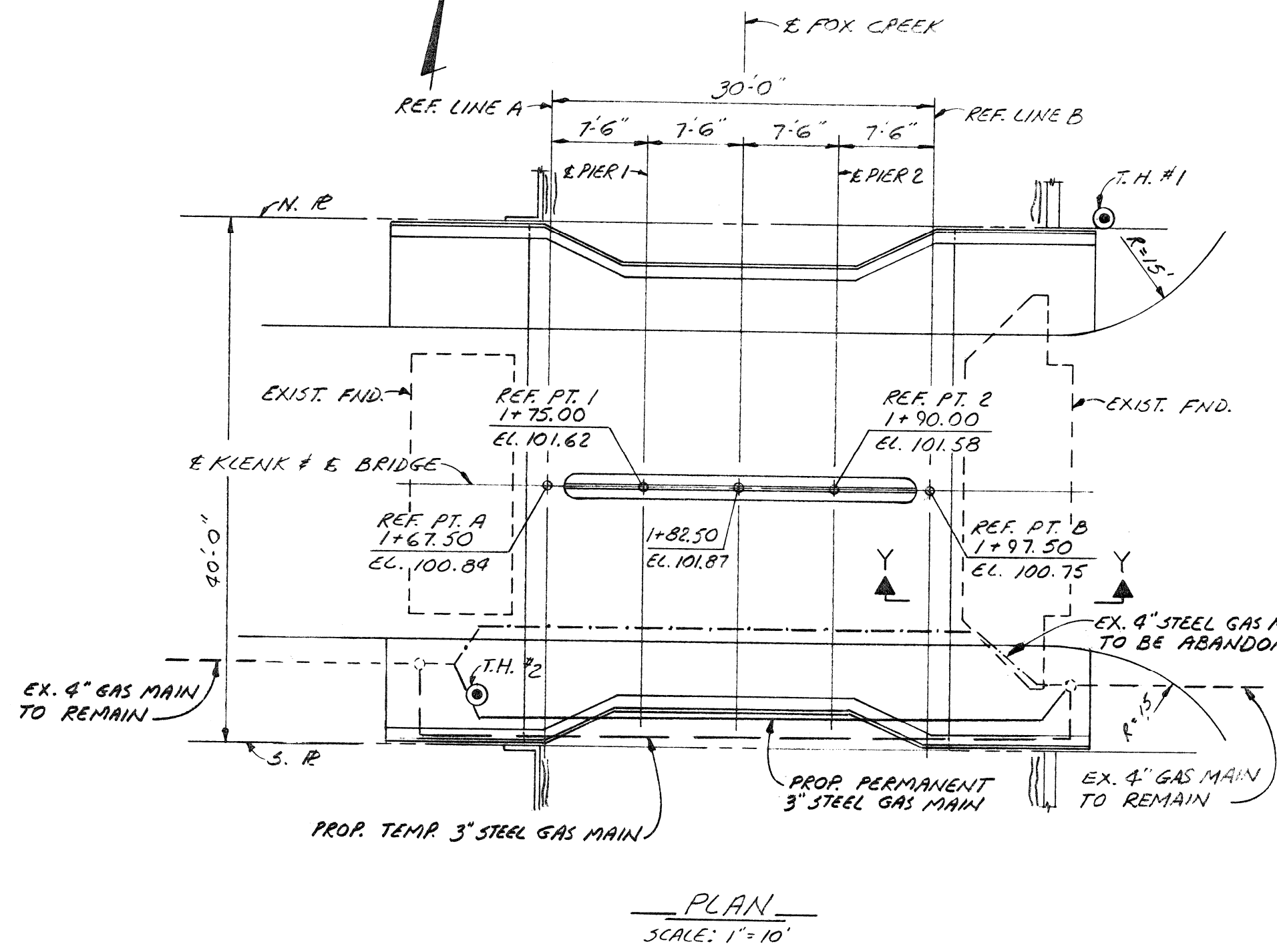
CONTRACT PW - 6602

JANUARY 1979

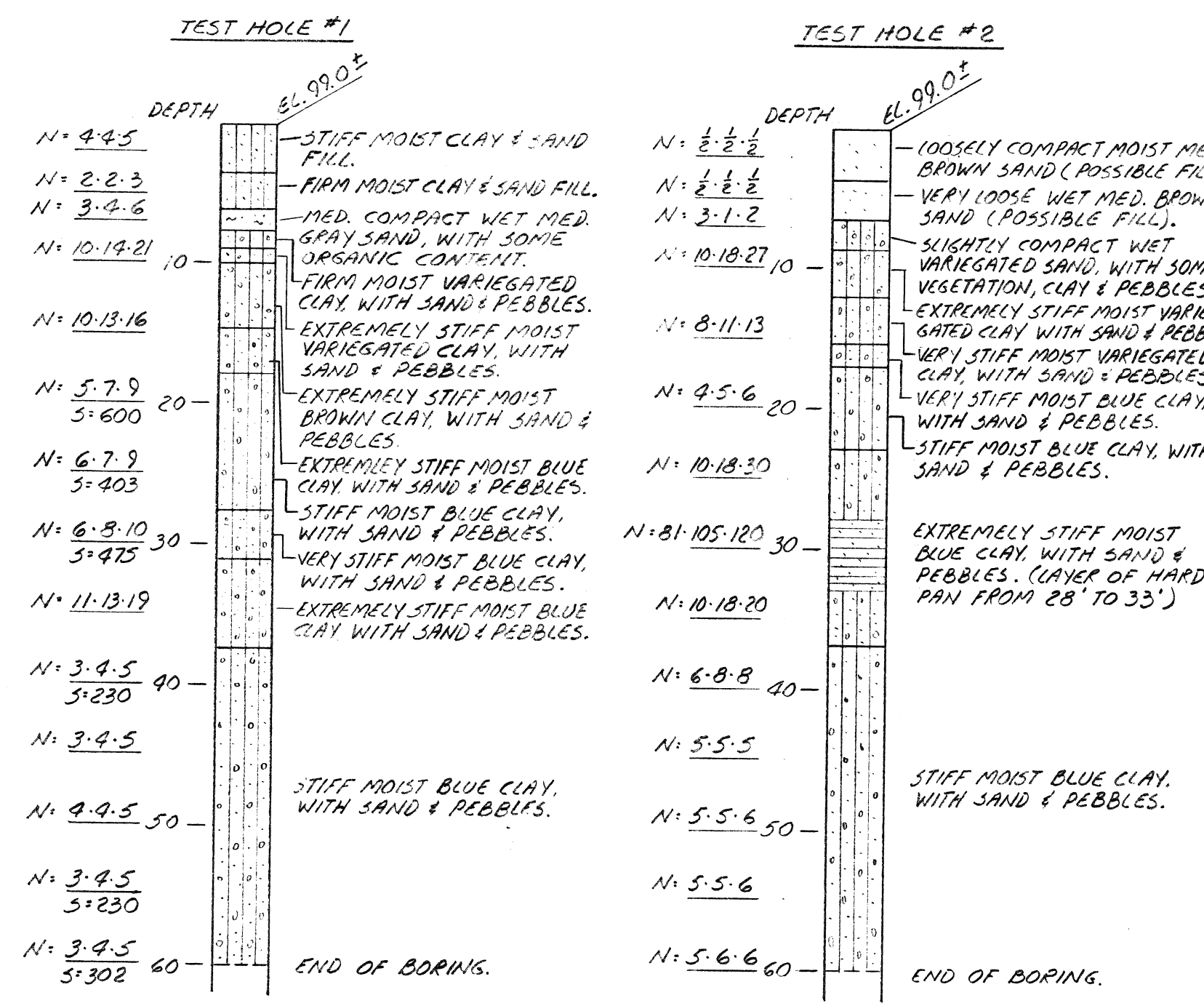
SOIL BORINGS

TOPD. SEC. NO. 61-A-10
BORING T.H. 13A
ON S. E. KLENK AVE. 110' W. OF E.
R. ALTER P.D.
FROM SEWER D.W.G. 2-W.S.H.#2 OF 13
DATED NOV. 1939

POST #	SLOPE
1#2	2:12
3	1 1/2:12
4	1:12
5	0:12



PLAN
SCALE: 1"=10'



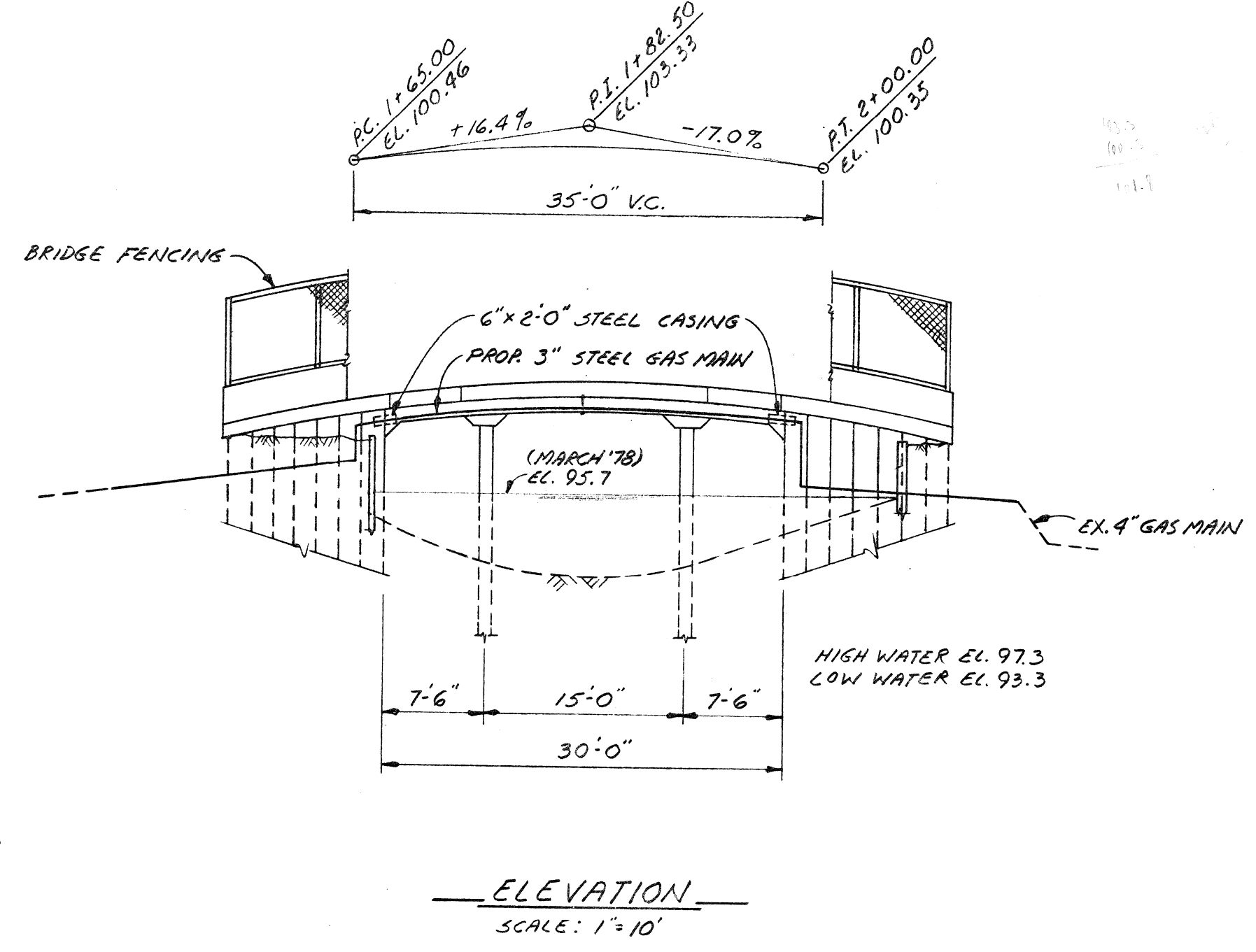
NOTES:
N = INDICATES THE NUMBER OF BLOWS REQUIRED TO DRIVE THE 2" Ø SAMPLER 6" (OR AS NOTED) USING A 140 LB. HAMMER FALLING 30".
S = INDICATES TRANSVERSE SHEARING RESISTANCE IN LBS. PER 50 FT. AS DETERMINED BY M.D.S.H. & T. STANDARD TEST.
THE CHARACTER OF ALL MATERIALS AND THE EXTENT THEREOF AS SHOWN BY BORINGS HAS BEEN OBTAINED BY METHODS AND FROM SOURCES BELIEVED TO BE RELIABLE. THE EXACTNESS OF THIS INFORMATION IS, HOWEVER, IN NO CASE GUARANTEED.

CONSTRUCTION BENCH MARKS

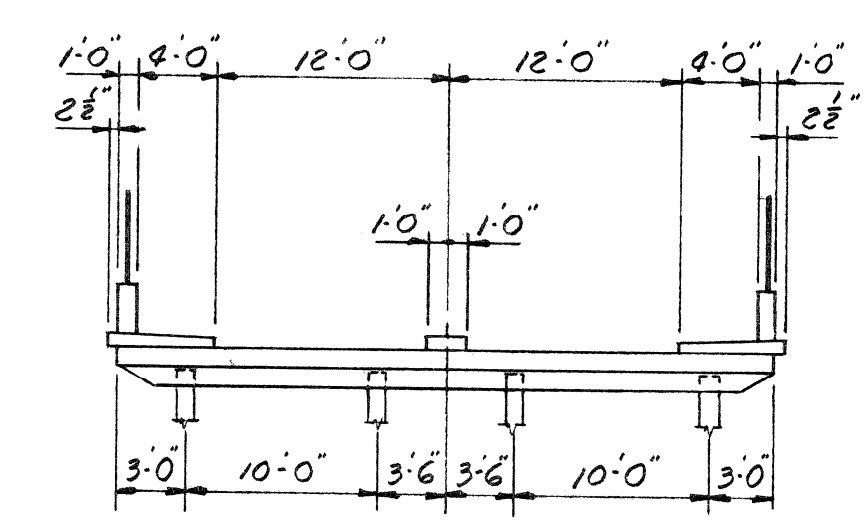
C.B.M. #1 - TOP OF ARROW ON HYDRANT S. SIDE KLENK AVE. OPP. HOUSE # 14705 EL. 99.60.
C.B.M. #2 - SPIKE IN POLE N. SIDE KLENK AVE. OPP. HOUSE # 14621 EL. 97.73.
GOVT. B.M. D-1 - S.W. CORNER OF FOX CREEK BRIDGE EL. 104.42.

GENERAL NOTES

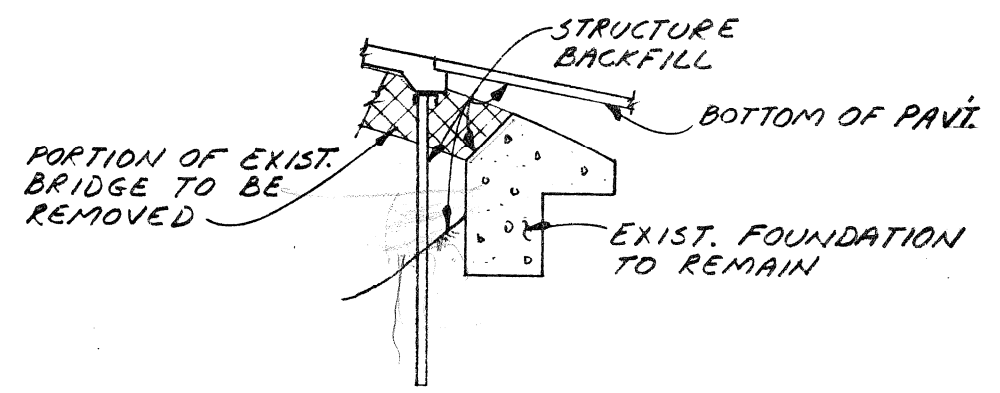
THE DESIGN OF THIS STRUCTURE IS BASED ON CURRENT AASHTO STANDARD SPECIFICATIONS FOR HIGHWAY BRIDGES H20-44 LOADINGS.
EXCEPT WHERE OTHERWISE INDICATED ON THESE PLANS OR IN THE PROPOSAL AND SUPPLEMENTAL SPECIFICATIONS CONTAINED THEREIN, ALL MATERIALS AND WORKMANSHIP SHALL BE IN ACCORDANCE WITH THE M.D.S.H. & T. STANDARD SPECIFICATIONS FOR HIGHWAY CONSTRUCTION 1976 EDITION.
THE DESIGN OF THE STRUCTURAL MEMBERS IS BASED ON MATERIAL OF THE FOLLOWING GRADES AND STRESSES:
CONCRETE: GRADE 450 $f_c' = 3000$ P.S.I.
STEEL REINFORCEMENT $f_y = 60,000$ P.S.I.
STRUCTURAL STEEL: A36 $f_y = 36,000$ P.S.I.
SILT AND OTHER UNSUITABLE MATERIAL BELOW ROADWAY SLAB, AND BETWEEN WINGWALLS AT ABUTMENTS ARE TO BE REMOVED, AND BACKFILLED WITH STRUCTURE BACKFILL AS DIRECTED BY THE ENGINEER.
WATER LEVEL IS SUBJECT TO CHANGE. THE CONTRACTOR IS RESPONSIBLE FOR MAKING HIS OWN DETERMINATION OF WATER LEVEL THAT WILL EXIST DURING CONSTRUCTION.



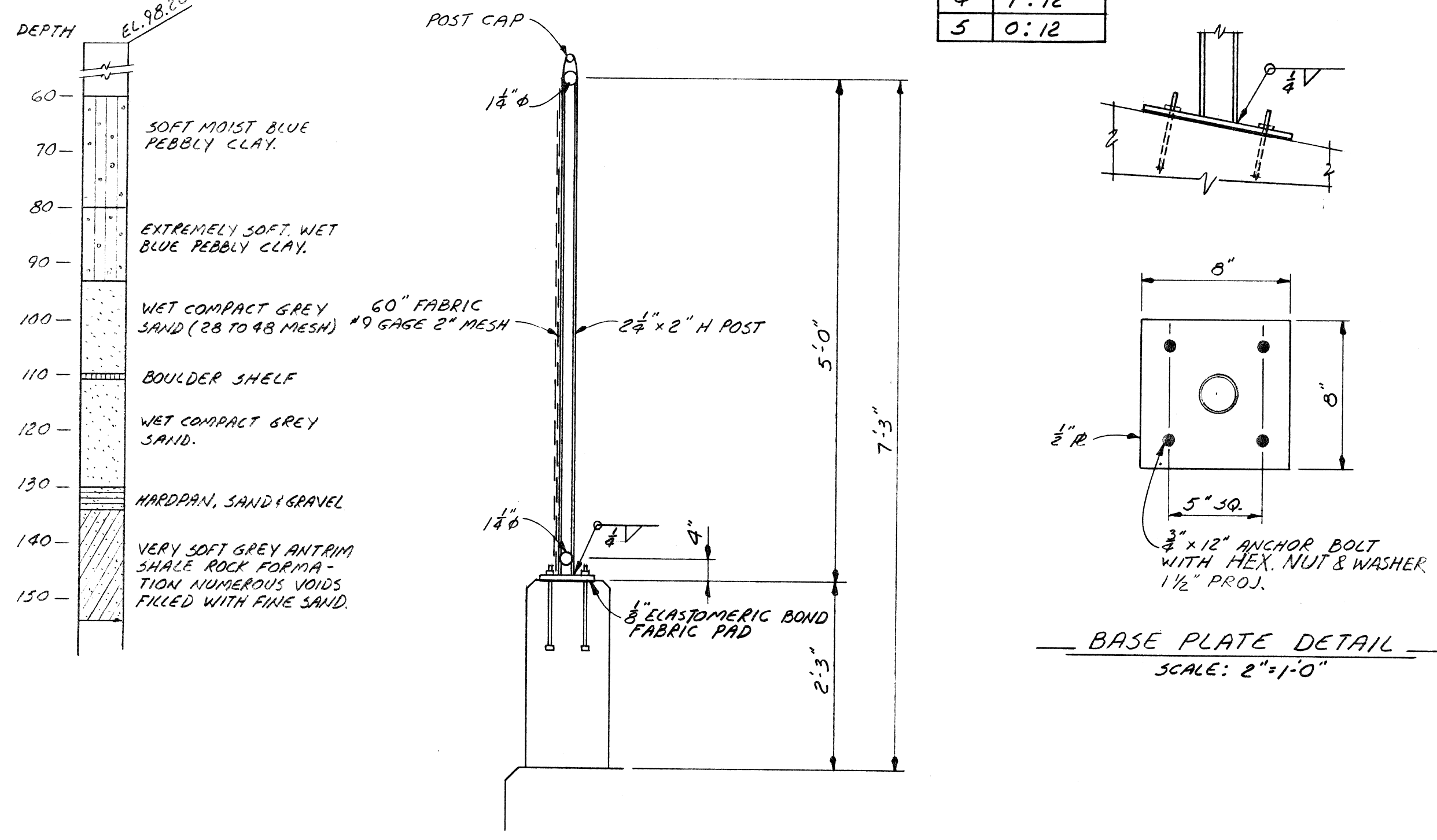
ELEVATION
SCALE: 1"=10'



SECTION
SCALE: 1"=10'

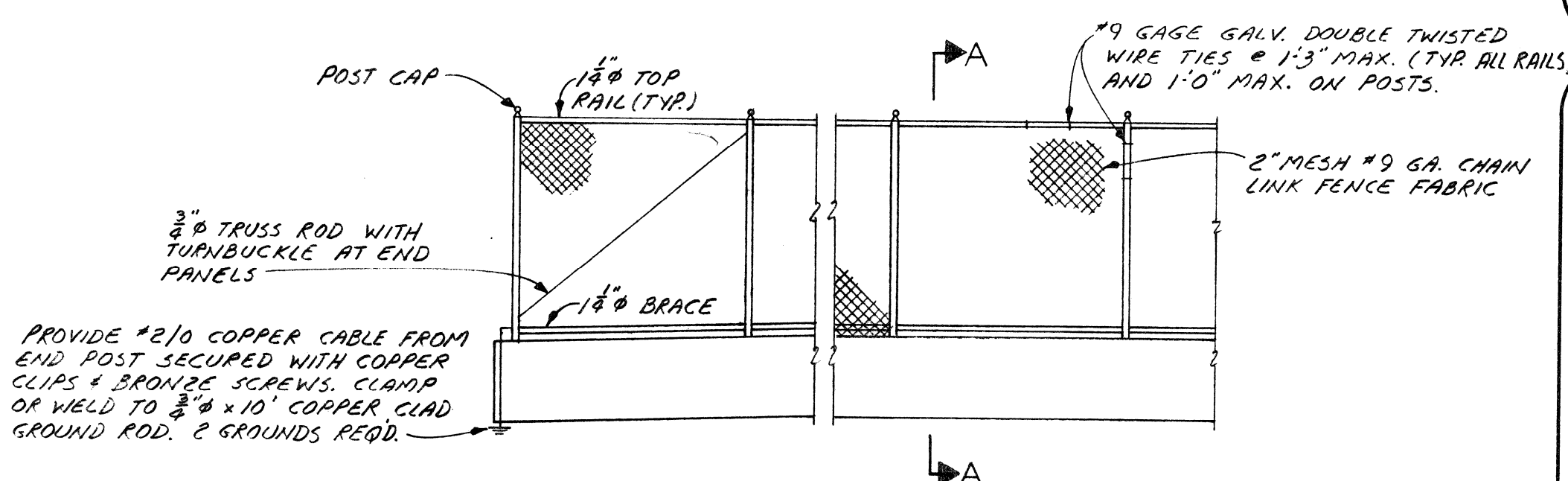


SECTION Y-Y
SCALE: 1"=10'

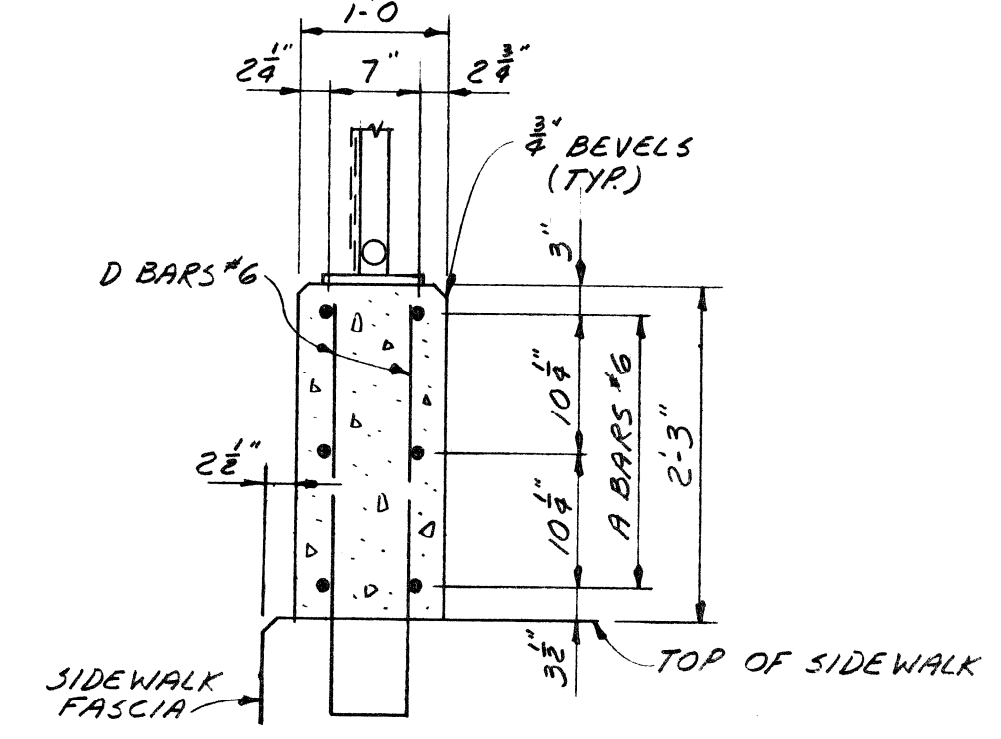


BASE PLATE DETAIL
SCALE: 2"=1'-0"

BRIDGE FENCING - SOLID PARAPET TYPE
(N.T.S.)



ELEVATION - BRIDGE FENCING
(N.T.S.)



SECTION A-A
SCALE: 3/8"=1'-0"

NOTES:
THE CHAIN LINK FENCE AND FRAMING SHALL CONFORM TO THE M.D.S.H. & T. SPECIFICATIONS FOR HIGHWAY CONSTRUCTION 1976 EDITION.
DIMENSIONS ARE HORIZONTAL ALONG & FENCING POSTS.
THE POSTS SHALL BE 2 1/2" x 2" STEEL H POSTS WEIGHING 9.1 LBS. PER FT. GALVANIZED, NOMINAL 1 1/2" PIPE SHALL BE 1 1/2" OUTSIDE DIAMETER STEEL PIPE OR TUBING WEIGHING 2.27 LBS. PER FT. GALVANIZED.
POSTS AND TUBING SHALL BE FURNISHED WITH THE MANUFACTURERS STANDARD CONNECTIONS AND ITS MINIMUM WEIGHT SHALL BE WITHIN 5% OF THAT SPECIFIED. TUBING SHALL BE BENT IN THE SHOP AS SHOWN ON THE PLANS. THE ENCLOSURE POSTS SHALL BE PLACED VERTICALLY.
ALL COMPONENTS ARE TO BE GALVANIZED AFTER FABRICATION. BOLTS, NUTS AND WASHERS ARE TO BE GALVANIZED IN ACCORDANCE WITH A.S.T.M. DESIGNATION A153.
ALL FABRIC FOR CHAIN LINK FENCE SHALL BE FURNISHED WITH KNUCKLING OF BOTH SELVAGES.
ALL FENCE FABRIC SHALL BE 19 GAGE 2" MESH.
POUND POSTS HAVING AN OUTSIDE DIAMETER OF 2.875" AND WEIGHT OF 5.79 LBS. PER FT. MAY BE USED AT THE TENSIONING POSTS.

revisions

approved
T. E. GAY
STRUCTURAL ENGINEER

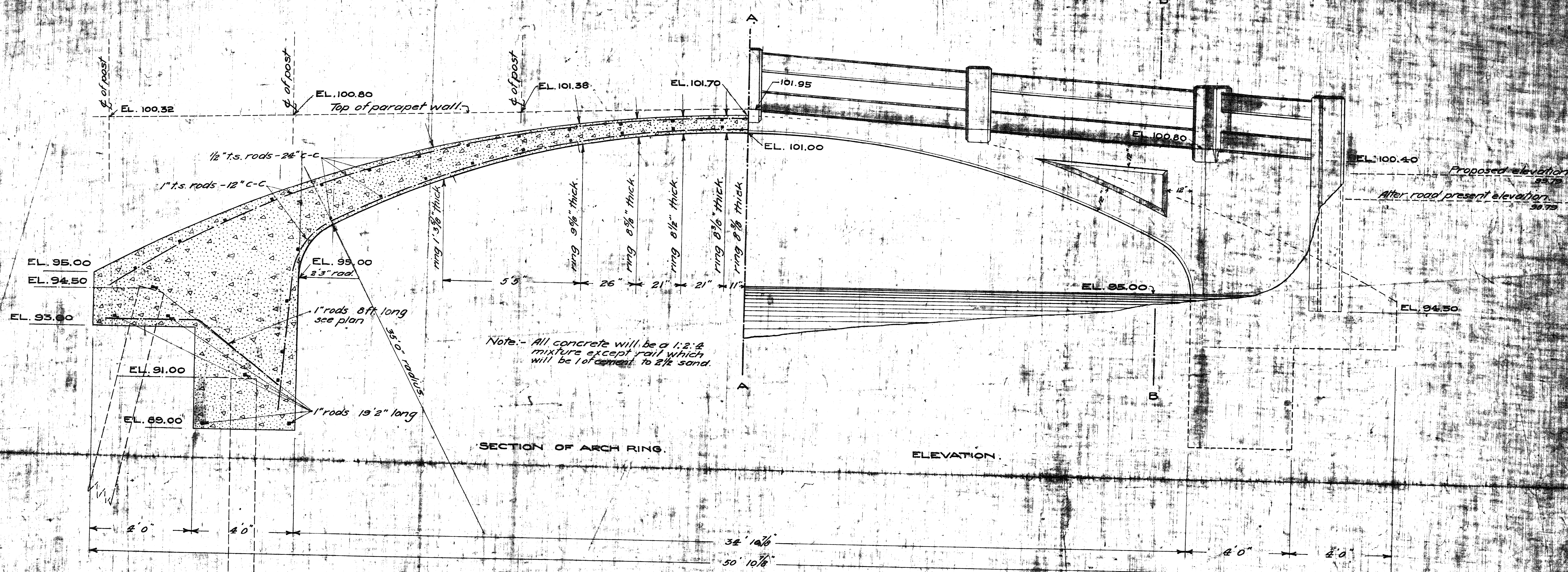
date 1-79
designed T.M./M.C.
drawn A.G.
checked M.C.

CITY OF DETROIT
CITY ENGINEERING
EP & MD
FOR THE ENVIRONMENTAL PROTECTION
& MAINTENANCE DEPARTMENT

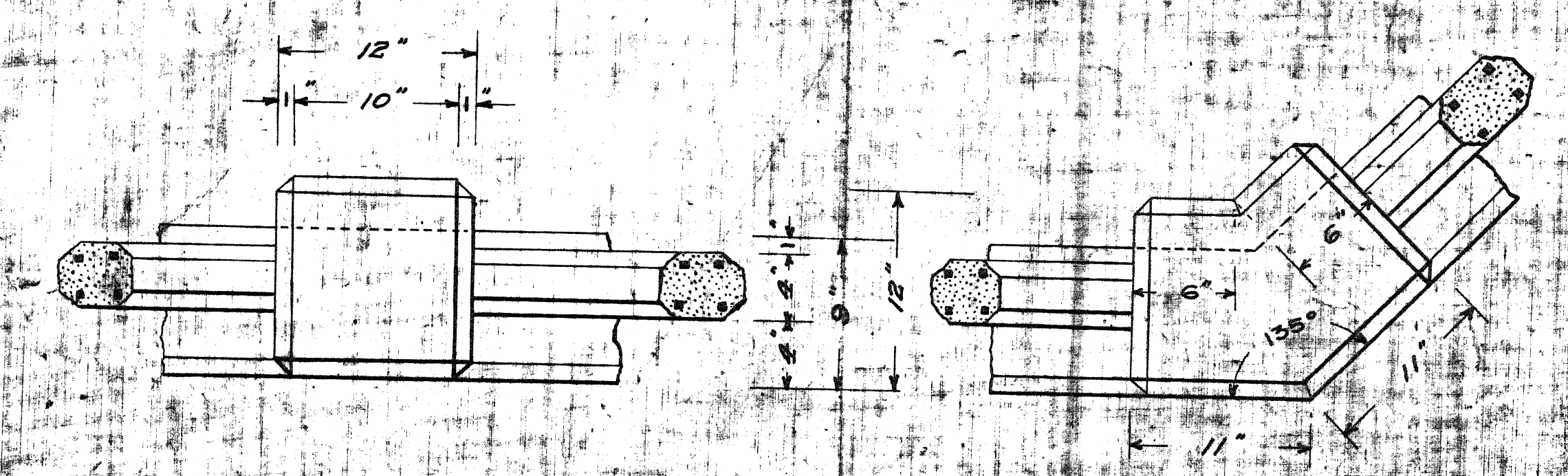
KLENK AVE. BRIDGE
OVER FOX CREEK

contract:
PW-6602

sheet: 2
of: 10
drawing:



NOTE:- Each bidder is expected to examine the drawings, to visit the locality of the work and to make his own estimate of the facilities and difficulties attending the execution of the work, including local conditions and all other contingencies.



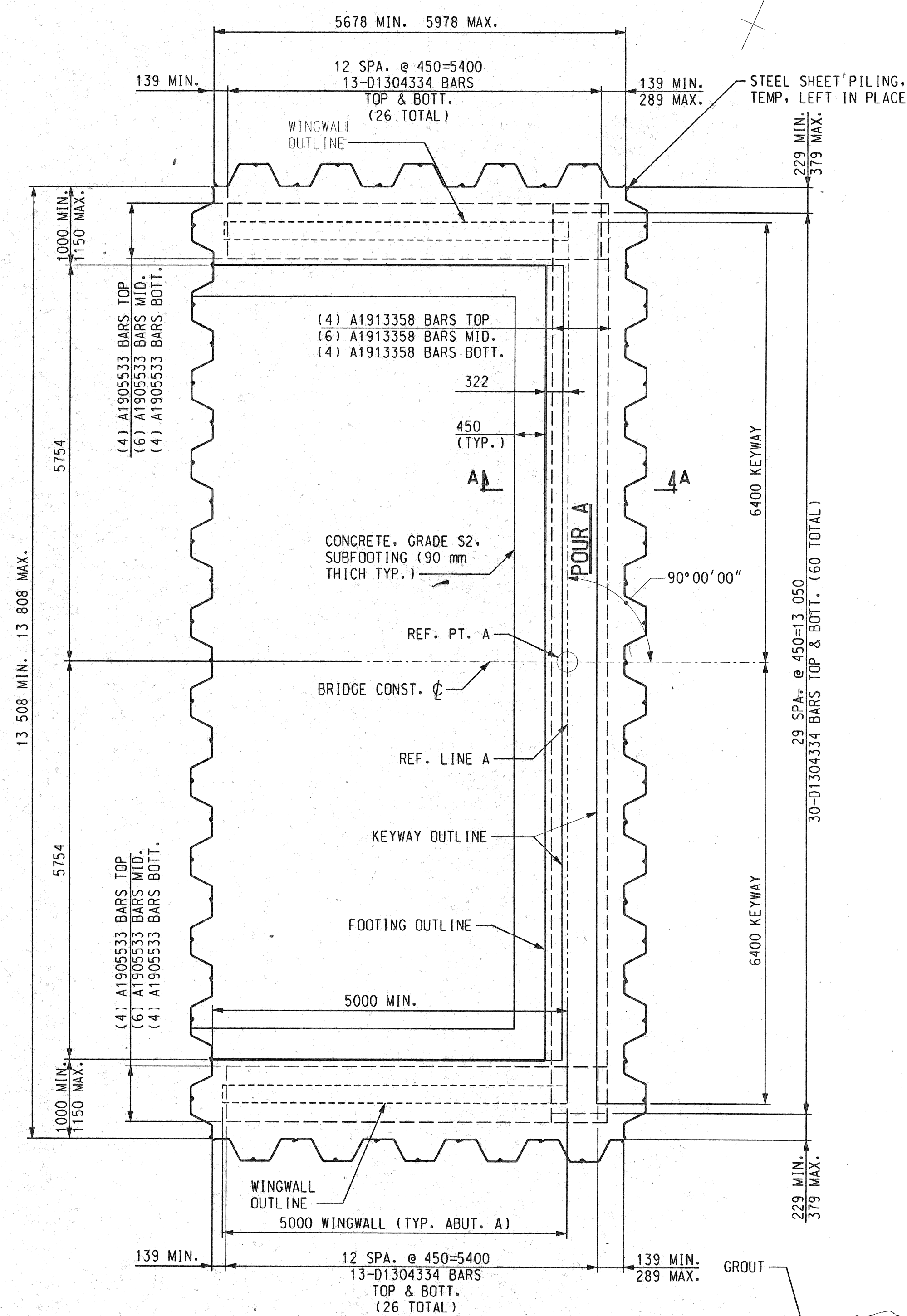
DETAIL PLAN OF RAIL POSTS
SCALE 3/4" = 1'

EXISTING
**REINFORCED CONCRETE BRIDGE
OVER FOX CREEK
AT KLENK AVE.**
CITY ENGINEER'S OFFICE

DATE
SCALE
SHEET 2 OF 2

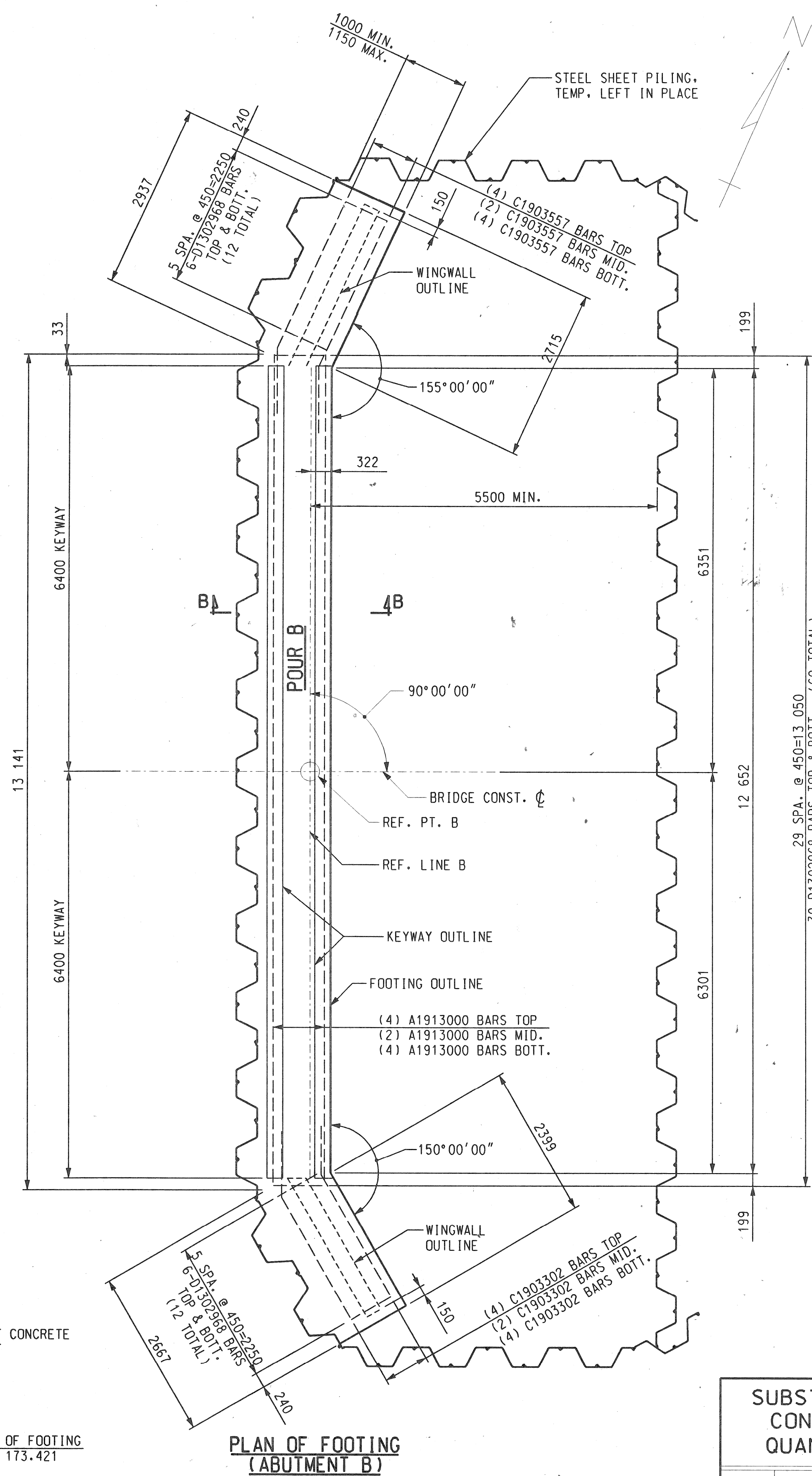
73936

FILE 81117



PLAN OF FOOTING (ABUTMENT A)

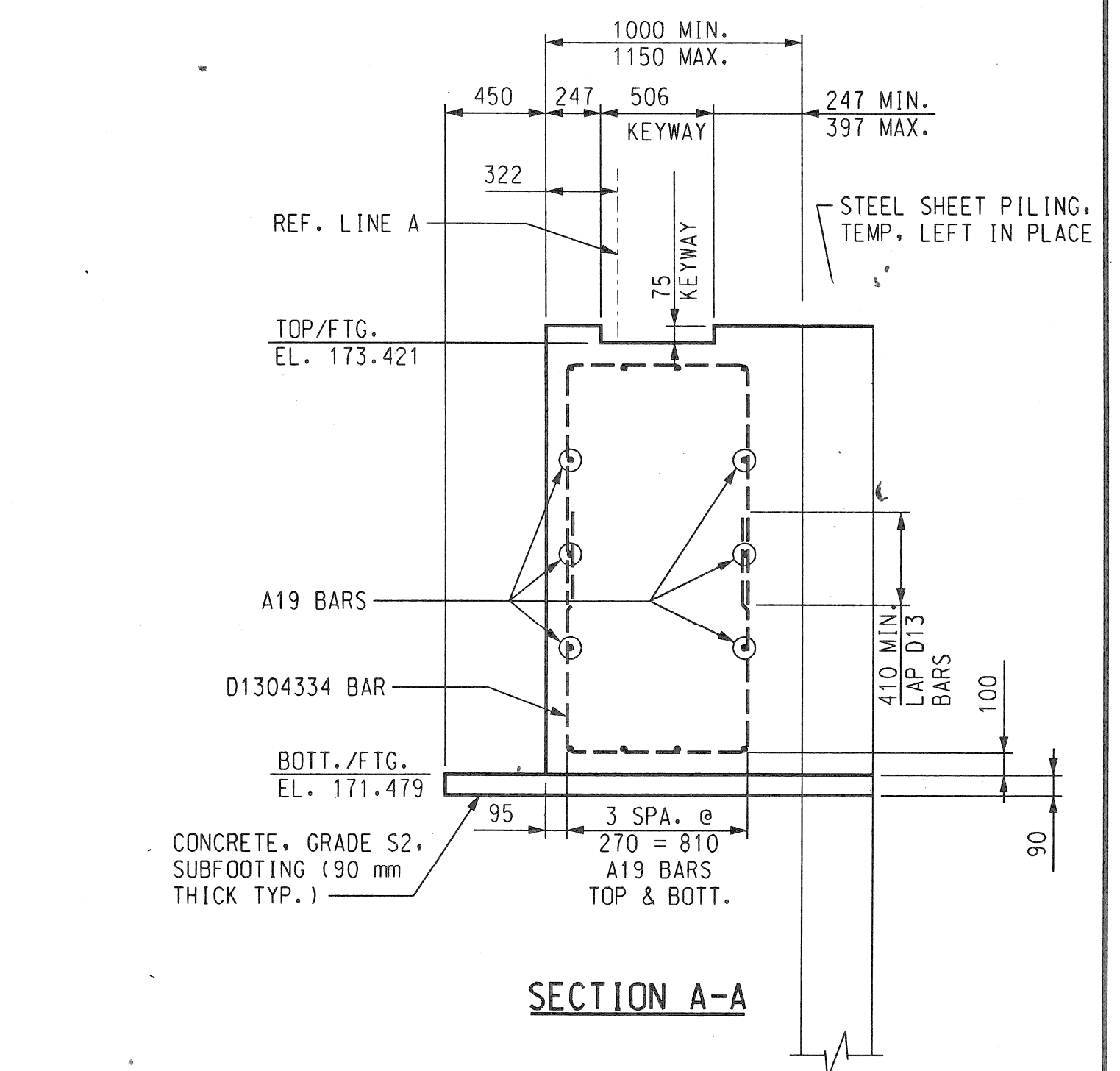
DETAIL AT KEYWAY



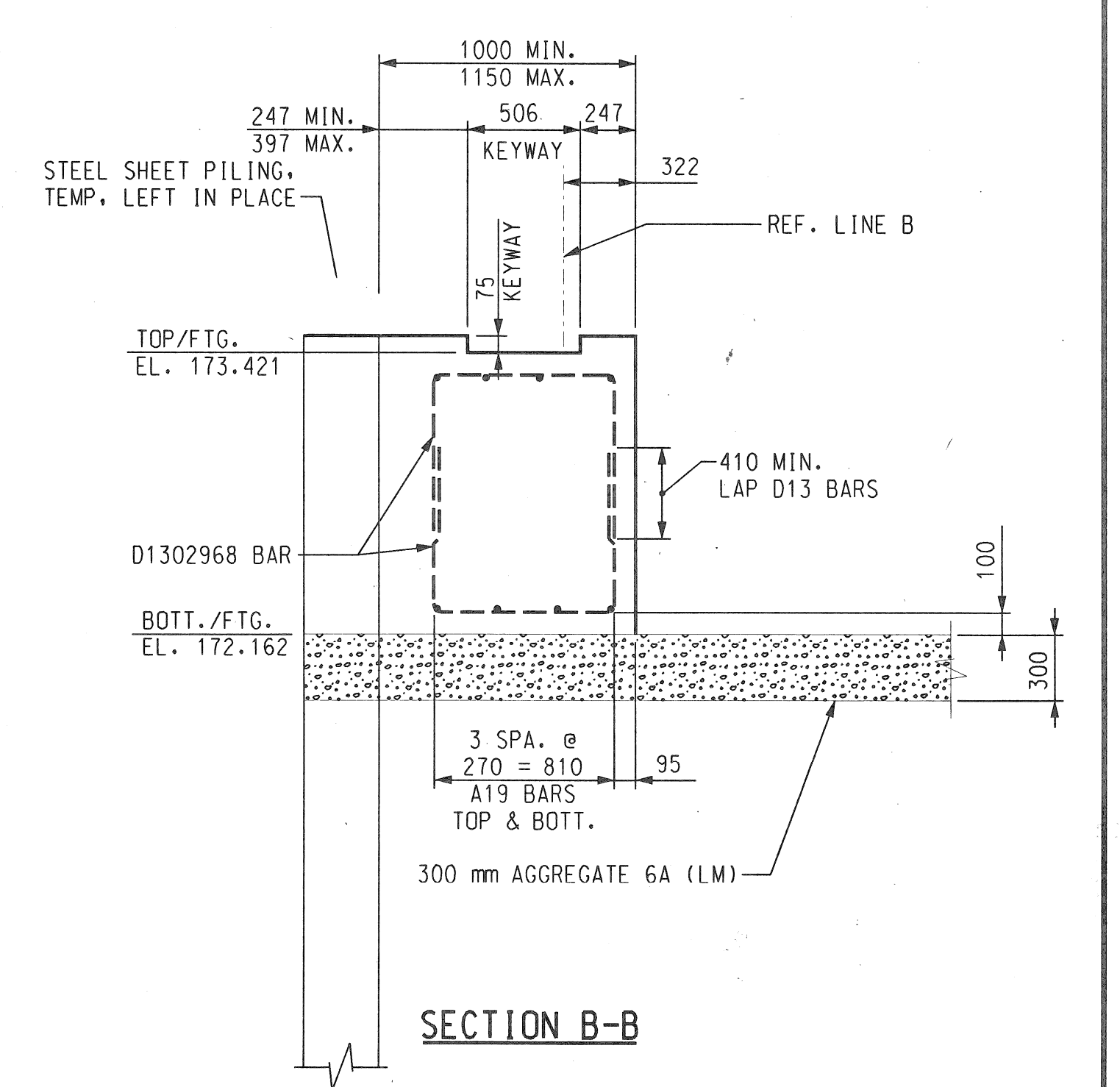
PLAN OF FOOTING (ABUTMENT B)

SUBSTRUCTURE CONCRETE QUANTITIES

POUR	AMOUNT
A	59.4 m3
B	29.9 m3
TOTALS	89.0 m3



SECTION A-A



SECTION B-B

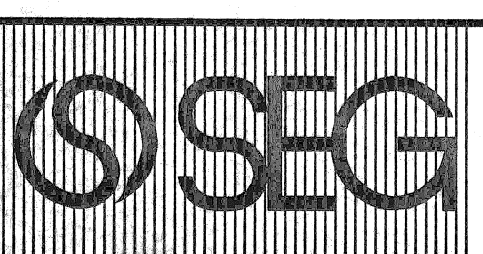
NOTES:
FOR ABUTMENT A AND B THE MAXIMUM FOUNDATION PRESSURE IS CALCULATED TO BE 278 kPa AVERAGE DEAD LOAD PLUS LIVE LOAD PRESSURE.

METRIC

DIMENSIONS ARE IN MILLIMETERS UNLESS OTHERWISE SHOWN. ELEVATIONS, COORDINATES, CURVE AND ALIGNMENT DATA ARE IN METERS. STATIONS ARE IN KILOMETERS + METERS.

REVISIONS	DESCRIPTION	DATE

DSGN BY	F.T.	7-97
DR'N BY	J.E.	7-97
CK'D BY	C.D.P.	7-97
APP'D BY		



SNELL ENVIRONMENTAL GROUP, INC.
151 W. CONGRESS, SUITE 328
DETROIT, MICHIGAN 48226
TELEPHONE (313) 961-4040

FEMTA
FEMI TALABI & ASSOCIATES INC.
615 GRESHOLD, SUITE 1505, DETROIT, MICHIGAN, 48226



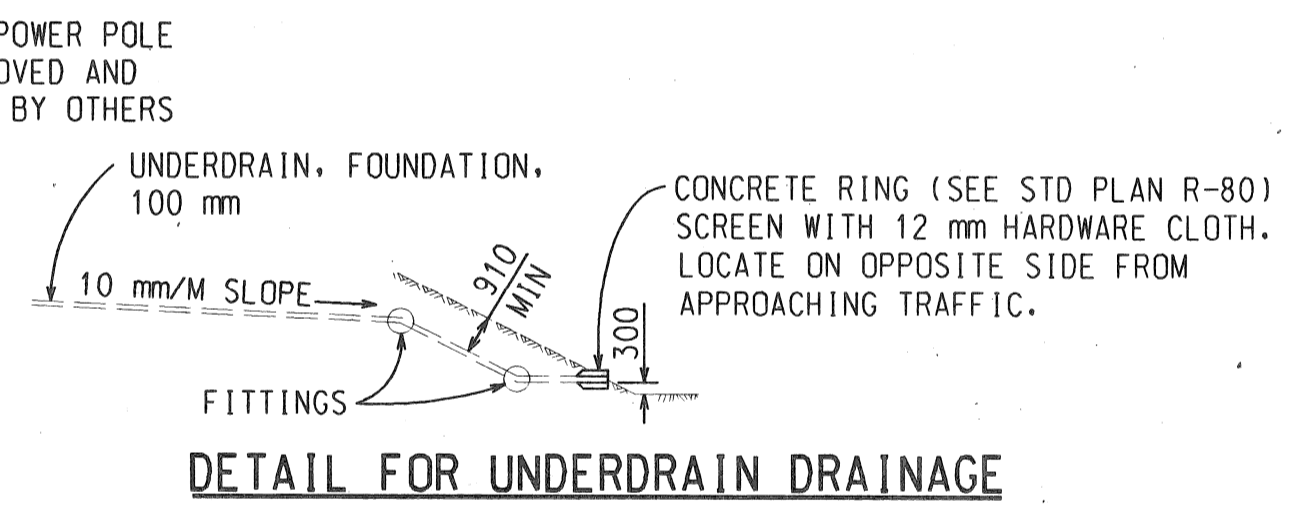
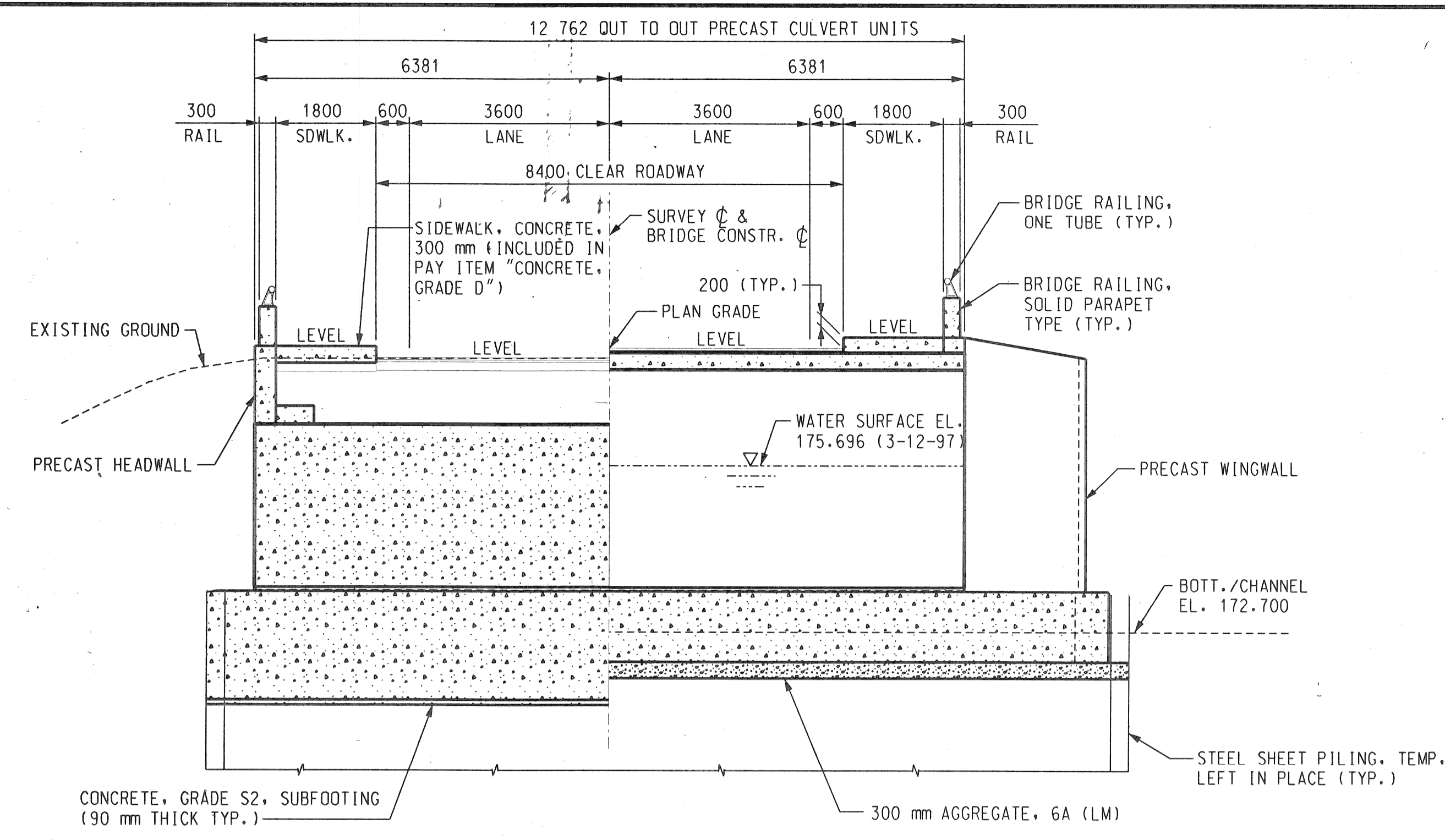
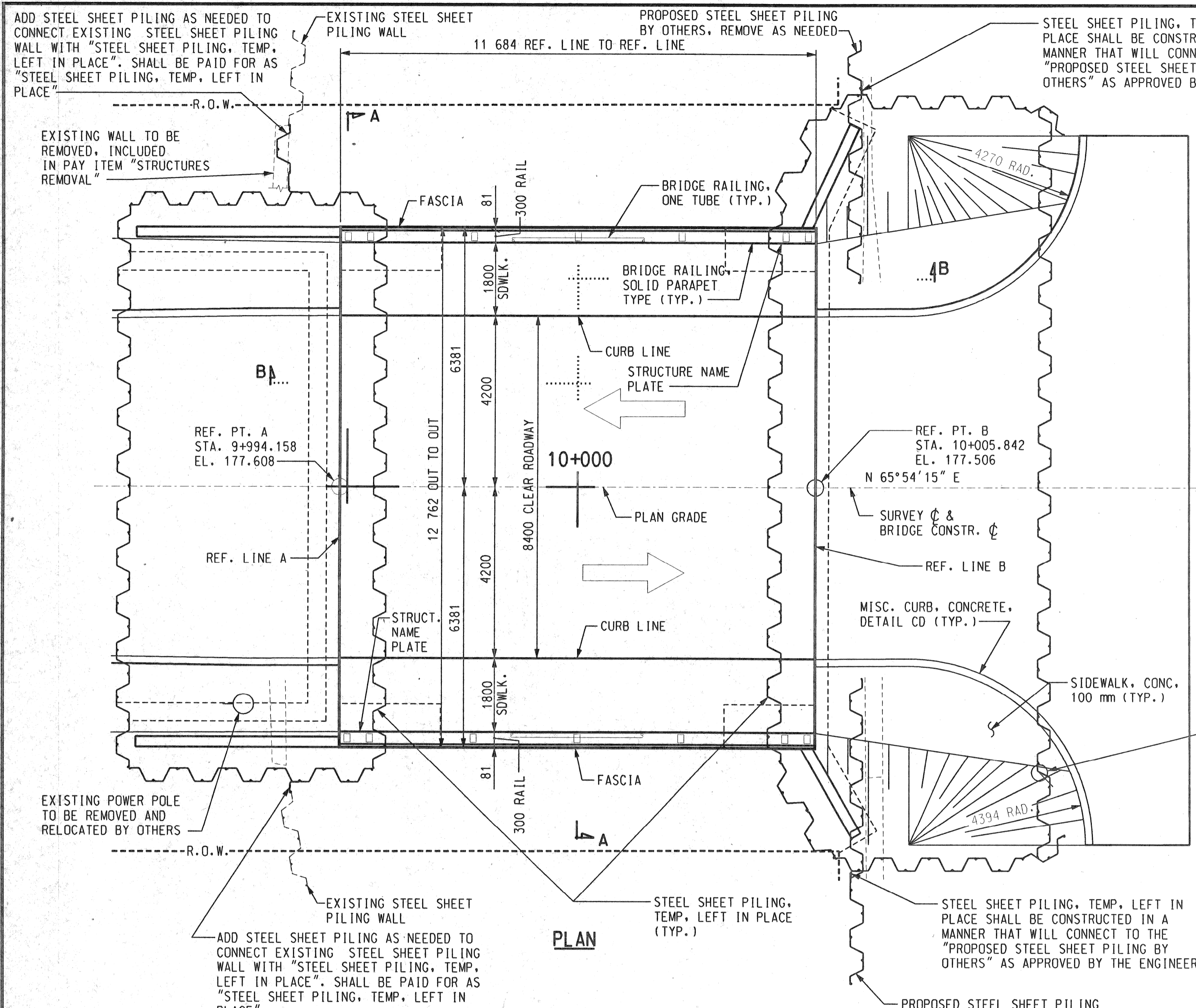
CITY OF DETROIT MICHIGAN

KORTE AVE. OVER THE FOX CREEK

FOOTING DETAILS

SCALE NOT TO SCALE
PROJECT NO. 9641-5160-02
SHEET NO. OF

FILE NAME: 06KORTFC.DGN



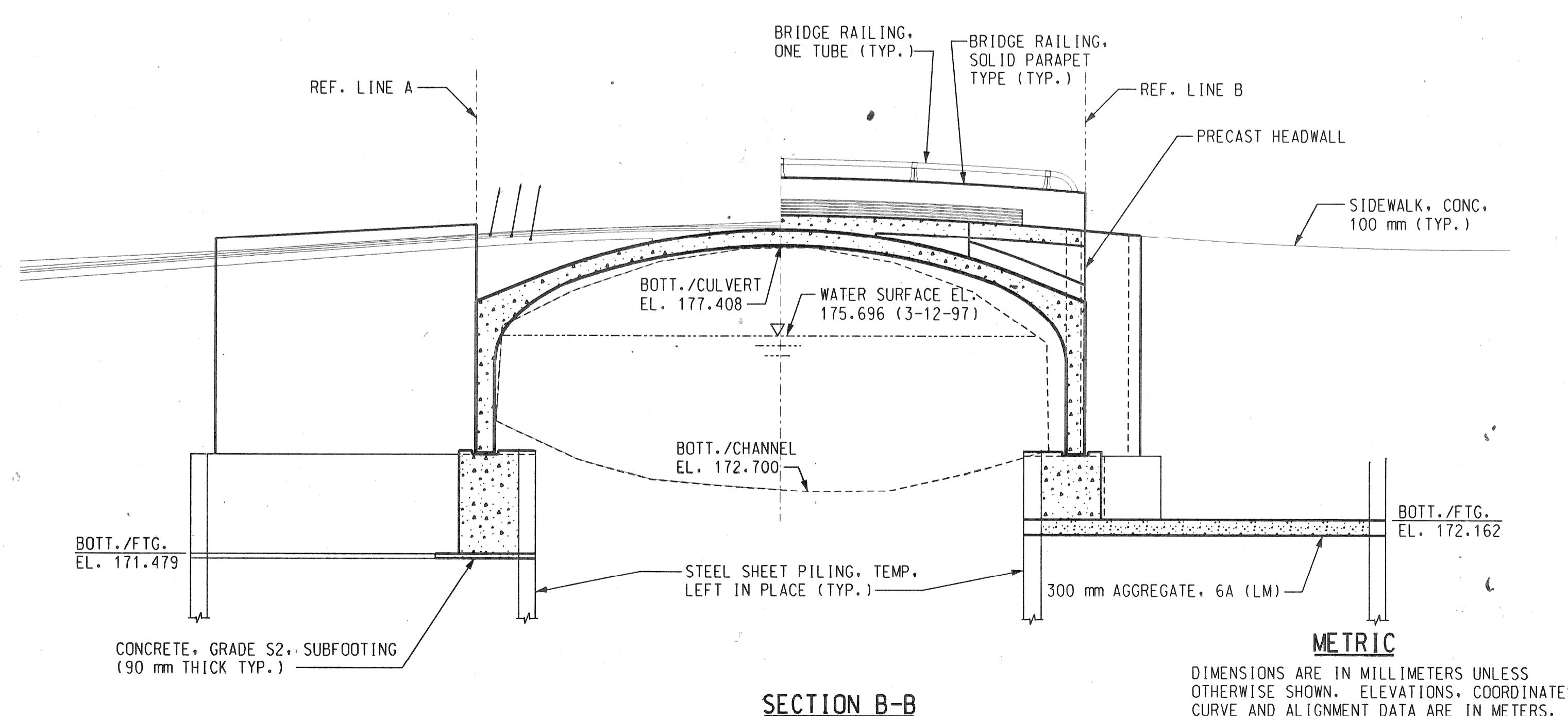
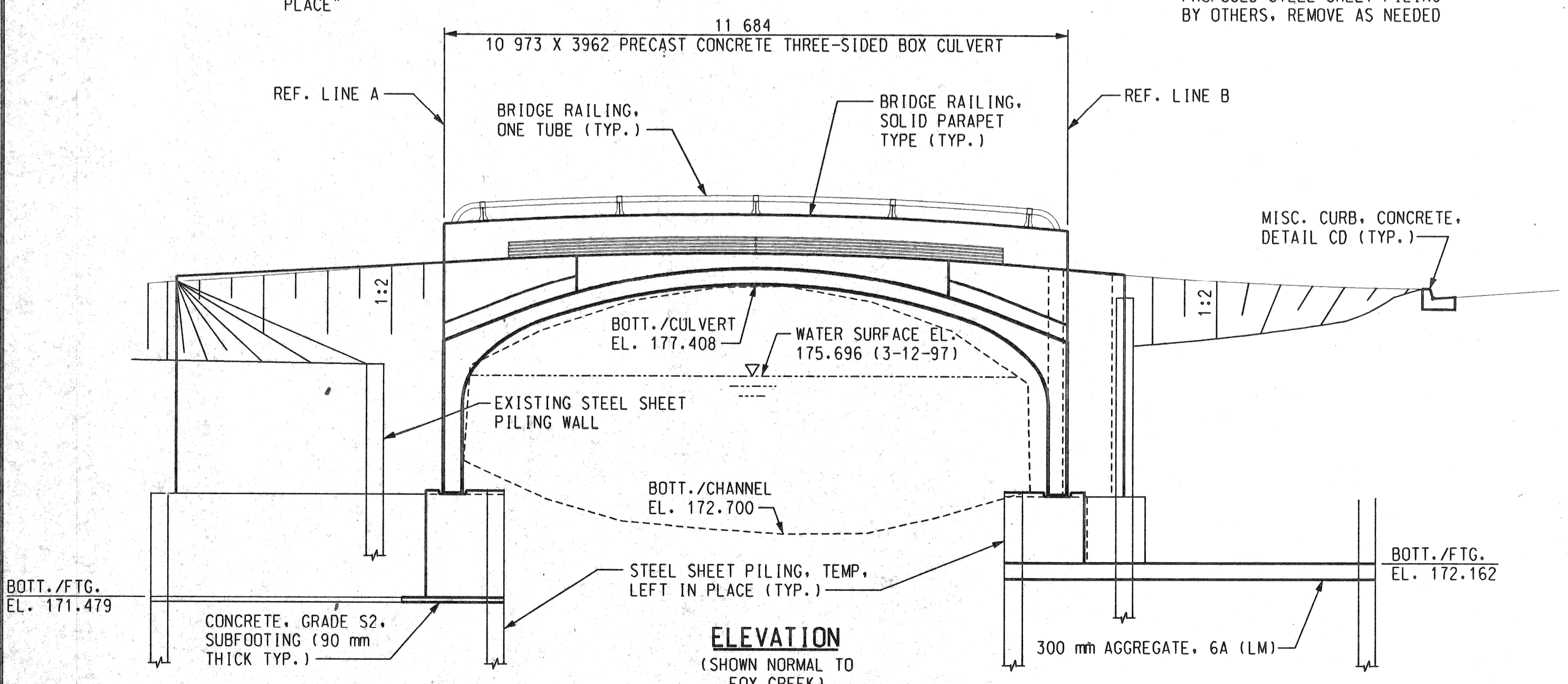
NOTES:

THE DESIGN OF THIS STRUCTURE IS BASED ON CURRENT AASHTO STANDARD SPECIFICATIONS FOR HIGHWAY BRIDGES MS18 LOADING. LIVE LOAD PLUS IMPACT DEFLECTION DOES NOT EXCEED 1/1000 OF SPAN LENGTH.

THE TOP OF THE ROADWAY AND TOPS OF SIDEWALKS ARE PARALLEL TO THE VERTICAL CURVE.

STEEL SHEET PILING, TEMP. LEFT IN PLACE SHALL BE CUT OFF AS DIRECTED BY THE ENGINEER.

ALL DEWATERING OPERATIONS, MATERIAL AND LABOR SHALL BE INCLUDED IN THE PAY ITEM "STEEL SHEET PILING, TEMP. LEFT IN PLACE".



REVISIONS	DSGN BY	F.T.	7-97		SNELL ENVIRONMENTAL GROUP, INC. A DLZ Company 151 W. CONGRESS, SUITE 328 DETROIT, MICHIGAN 48226 TELEPHONE (313) 961-4040		FEMI TALABI & ASSOCIATES INC. 615 GRENOLD, SUITE 1505, DETROIT, MICHIGAN, 48226		CITY OF DETROIT MICHIGAN	KORTE AVE. OVER THE FOX CREEK	GENERAL PLAN OF STRUCTURE	SCALE	NOT TO SCALE
	DR'N BY	J.E.	7-97									PROJECT NO.	9641-5160-02
	CK'D BY	C.D.P.	7-97									SHEET NO.	
	APP'D BY											OF	

UTILITIES	
AMERITECH 4000 ALLEN RD. ROOM 101 ALLEN PARK, MICHIGAN 48101 ATTN: DAVE BUCIENSKI PHONE No.: (313) 389-9819	TELEPHONE
CITY OF DETROIT WATER & SEWERAGE DEPT 735 RANDOLPH ST. DETROIT, MICHIGAN 48226 PHONE No.: (313) 224-4800	WATER & SEWAGE
DETROIT EDISON 2000 SECOND AVE. ROOM 607 G.O. DETROIT, MICHIGAN 48226 ATTN: JOHN SQUIRES PHONE No.: (313) 235-6597	ELECTRIC
MICHIGAN CONSOLIDATED GAS CO. DRAFTING CLERK MAIN REPLACEMENT TEAM NOBLE SECOND FLOOR 3200 HOBSON DETROIT, MICHIGAN 48201 PHONE No.: (313) 577-7236	GAS

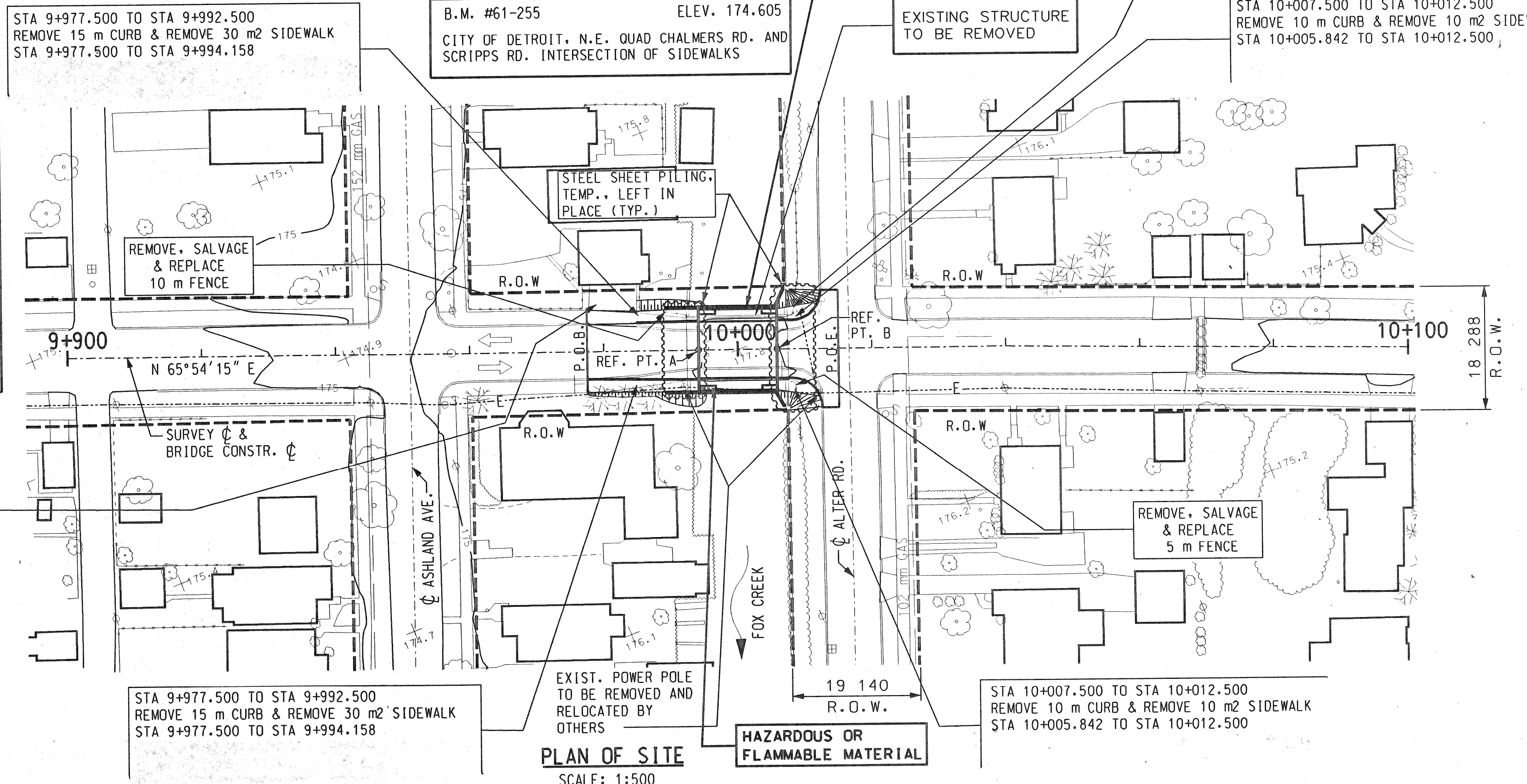
EXISTING STRUCTURE
ONE SPAN REINFORCED CONCRETE ARCH STRUCTURE
MEASURING 10.67 m AND RISE 1.52 m BUILT
IN 1924.
7925mm CLEAR ROADWAY.

BENCHMARK
B.M. #62-254A ELEV. 174.852
CITY OF DETROIT, N.E. QUAD PHILIP RD. AND
AVONDALE RD. INTERSECTION OF SIDEWALKS
B.M. #61-255 ELEV. 174.605
CITY OF DETROIT, N.E. QUAD CHALMERS RD. AND
SCRIPPS RD. INTERSECTION OF SIDEWALKS

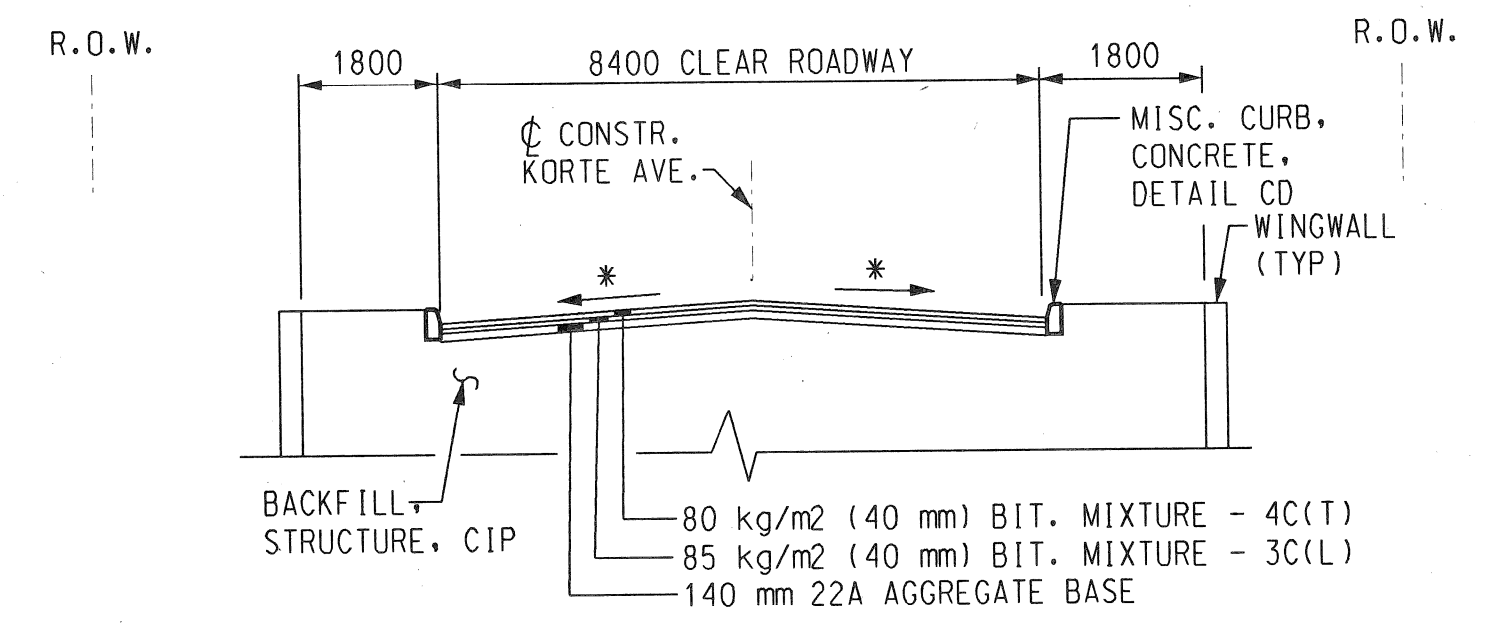
PROPOSED REPLACEMENT
KORTE AVE. BRIDGE
MDOT - B01 OF 1086
CITY - BW-249

REMOVE, SALVAGE
& REPLACE
5 m FENCE

WITNESSES		
WITNESS TO CONTROL POINT 102: STA. 9+900	(MAG. NAIL)	
N 80° W	SE CORNER HOUSE	18.92 m
S 50° W	POWER POLE	15.99 m
S 60° E	POWER POLE	10.15 m
WITNESS TO CONTROL POINT 103: STA. 10+040	(MAG. NAIL)	
N 85° W	762 mm ELM	13.36 m
S 10° E	POWER POLE	6.25 m
N 60° W	SW CORNER HOUSE	12.10 m

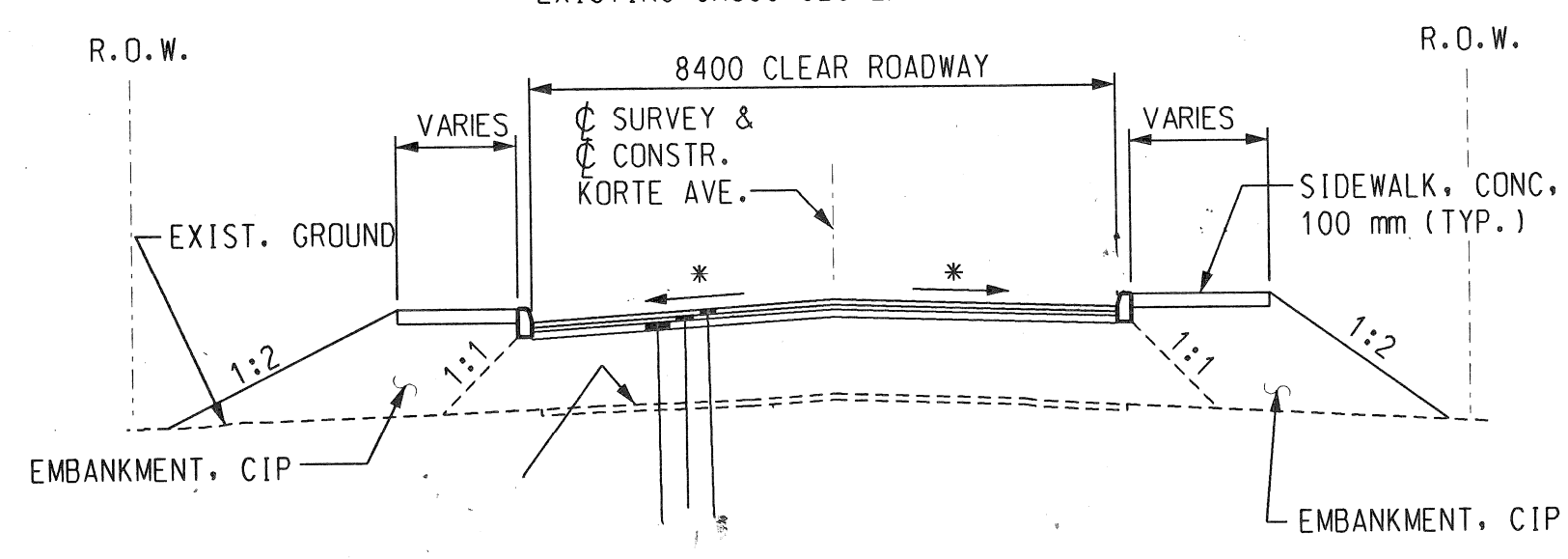


DRIVEWAYS TO BE PAVED TO PROVIDE A
SMOOTH TRANSITION BETWEEN PROPOSED
PAVEMENT AND EXISTING DRIVEWAY AS
DIRECTED BY ENGINEER.



TYPICAL APPROACH SECTION

* TRANSITION FROM 0% AT BRIDGE TO MATCH
EXISTING CROSS SLOPE AT APPROACHES



TYPICAL APPROACH SECTION

STA. 9+975 TO STA. 9+989.158 &
STA. 10+005.842 TO STA. 10+007

* TRANSITION FROM 0% AT BRIDGE TO MATCH
EXISTING CROSS SLOPE AT APPROACHES

NOTES:

THE WORK COVERED BY THESE PLANS INCLUDES MAINTAINING TRAFFIC, REMOVAL OF EXISTING BRIDGE, CONSTRUCTION OF THE PROPOSED BRIDGE AND APPROACH WORK.

THE CONTRACTOR SHALL LOCATE ALL ACTIVE UNDERGROUND UTILITIES PRIOR TO STARTING WORK AND SHALL CONDUCT HIS OPERATIONS IN SUCH A MANNER AS TO ENSURE THAT THOSE UTILITIES NOT REQUIRING RELOCATION WILL NOT BE DISTURBED.

KORTE AVE. TRAFFIC IS TO BE DETOURED OVER THE EXISTING ROADS.

DATUM REFERS TO N.A.V.D. DATUM.

WATER LEVEL IS SUBJECT TO CHANGE. THE CONTRACTOR IS RESPONSIBLE FOR MAKING HIS OWN DETERMINATION OF WATER LEVELS THAT WILL EXIST DURING CONSTRUCTION.

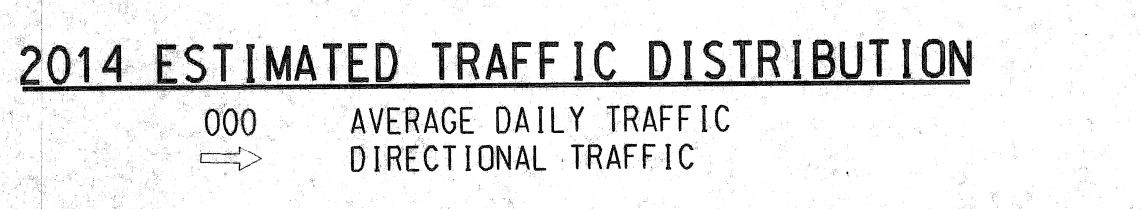
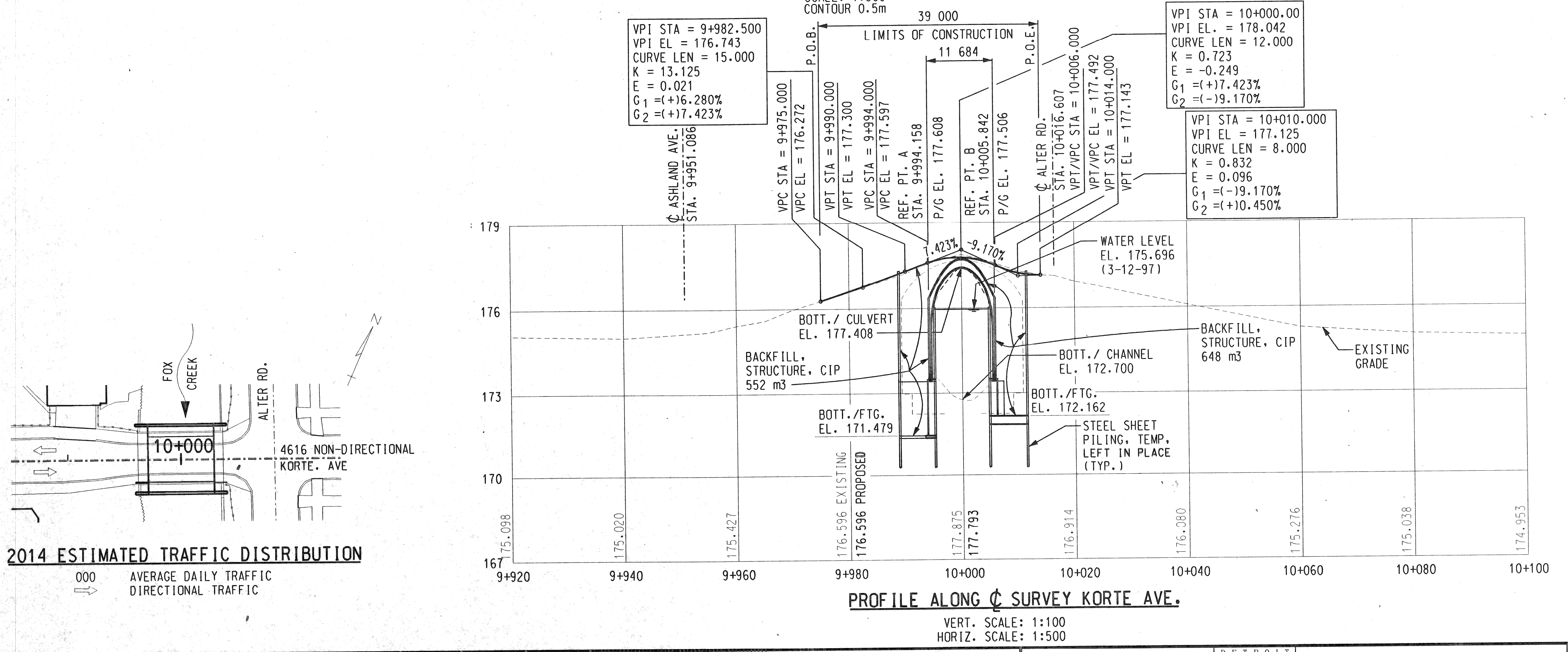
MEASURES SHALL BE TAKEN TO PREVENT DEBRIS FROM FALLING FROM THE STRUCTURE. IF DEBRIS FALLS INTO THE WATERWAY, IT SHALL BE REMOVED WITHIN 24 HOURS. SINCE DISTURBANCE OF THE WATERWAY BOTTOM MAY BE AS HARMFUL AS THE DEBRIS ITSELF, THE PREVENTIVE MEASURES MUST BE MADE AS EFFECTIVE AS POSSIBLE.

TEMPORARILY STORED EXCAVATED MATERIAL SHALL NOT BE ALLOWED TO ERODE INTO THE WATERCOURSE.

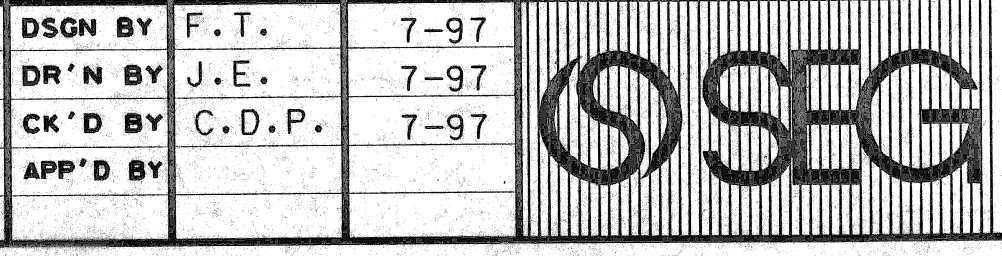
ALL DISTURBED EXISTING GROUND AND ANY NEW FILL SLOPES SHALL BE SEED, FERTILIZED, AND MULCHED AS DIRECTED BY THE ENGINEER. TO BE INCLUDED IN THE PAY ITEMS "SEEDING, MIXTURE TUF," "FERTILIZER, CHEMICAL NUTRIENT, CLASS A," AND "MULCH BLANKET."

METRIC

DIMENSIONS ARE IN MILLIMETERS UNLESS OTHERWISE SHOWN. ELEVATIONS, COORDINATES, CURVE AND ALIGNMENT DATA ARE IN METERS. STATIONS ARE IN KILOMETERS + METERS.



REVISIONS	DSGN BY	F.T.	7-97
	DR'N BY	J.E.	7-97
	CK'D BY	C.D.P.	7-97
	APP'D BY		



SNELL ENVIRONMENTAL GROUP, INC.
A DLZ Company
151 W. CONGRESS, SUITE 328
DETROIT, MICHIGAN 48226
TELEPHONE (313) 961-4040

F.T.A. FEMI TALABI & ASSOCIATES INC.
615 GRESHOLD, SUITE 1505, DETROIT, MICHIGAN 48226

CITY OF DETROIT MICHIGAN

KORTE AVE. OVER THE FOX CREEK

GENERAL PLAN OF SITE

SCALE	NOT TO SCALE
PROJECT NO.	9641-5160-02
SHEET NO.	OF

FILE NAME: 02KORST.DGN