

KLENK AVE. BRIDGE OVER FOX CREEK DEMOLITION AND RECONSTRUCTION

THE ENVIRONMENTAL PROTECTION AND MAINTENANCE DEPARTMENT

CITY OF DETROIT
ENVIRONMENTAL PROTECTION AND MAINTENANCE DEPARTMENT
CITY ENGINEERING DIVISION

RECOMMENDED FOR APPROVAL

J. F. Crane / T.E.G.M. 4/25/79 W. R. Samson 4/24/79
ENGINEER OF INSPECTION DATE HEAD ENGINEER DATE

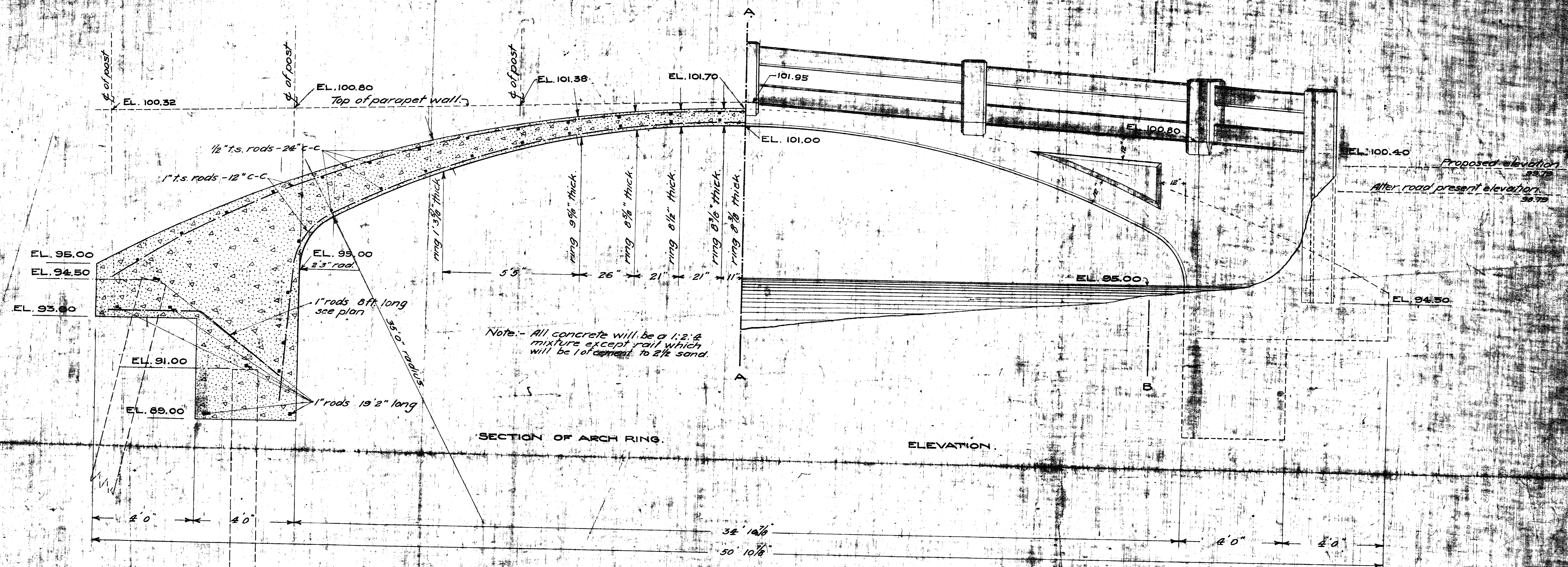
APPROVED

[Signature] 4/25/79 [Signature] 4-24-79
ASSISTANT CITY ENGINEER DATE CITY ENGINEER DATE

CONTRACT

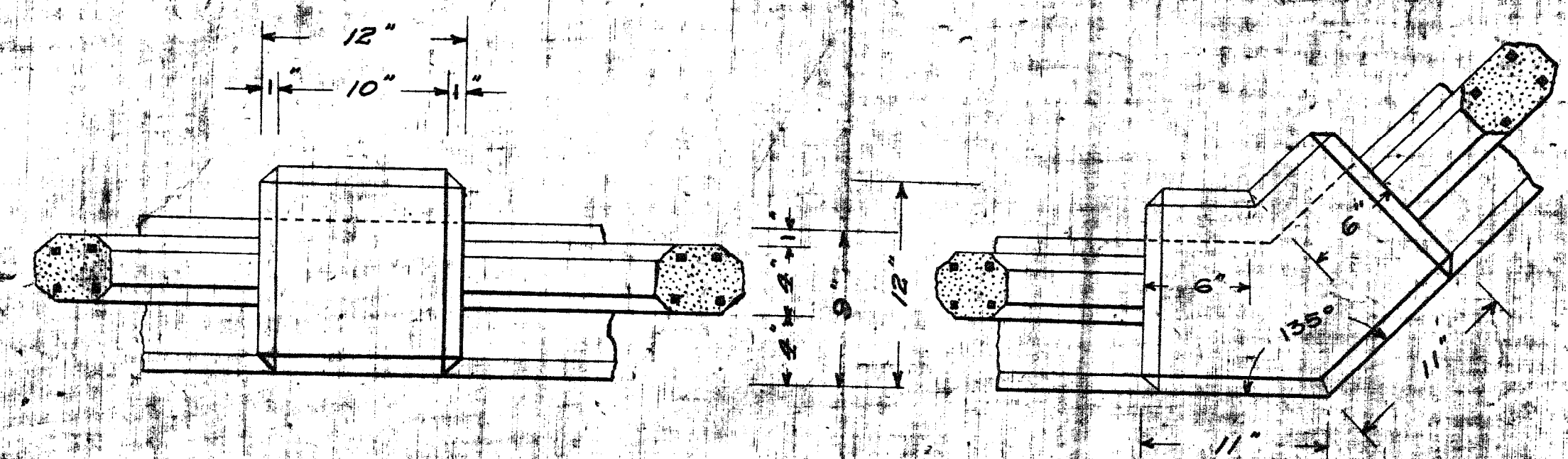
PW - 6602

JANUARY 1979



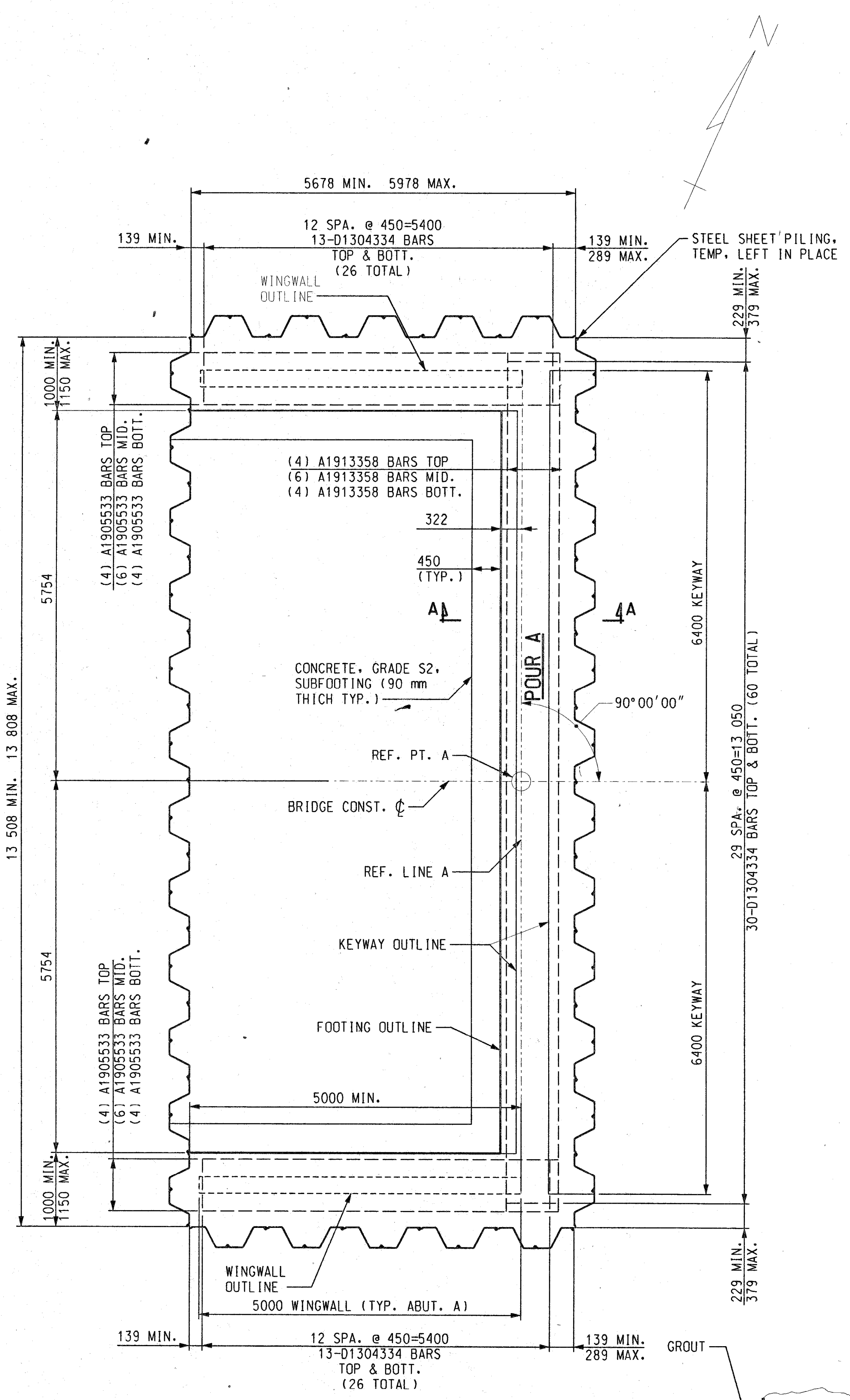
Note: - All concrete will be a 1:2:4 mixture except rail which will be 1 of cement to 2 1/2 sand.

NOTE: - Each bidder is expected to examine the drawings, to visit the locality of the work and to make his own estimate of the facilities and difficulties attending the execution of the work, including local conditions and all other contingencies.

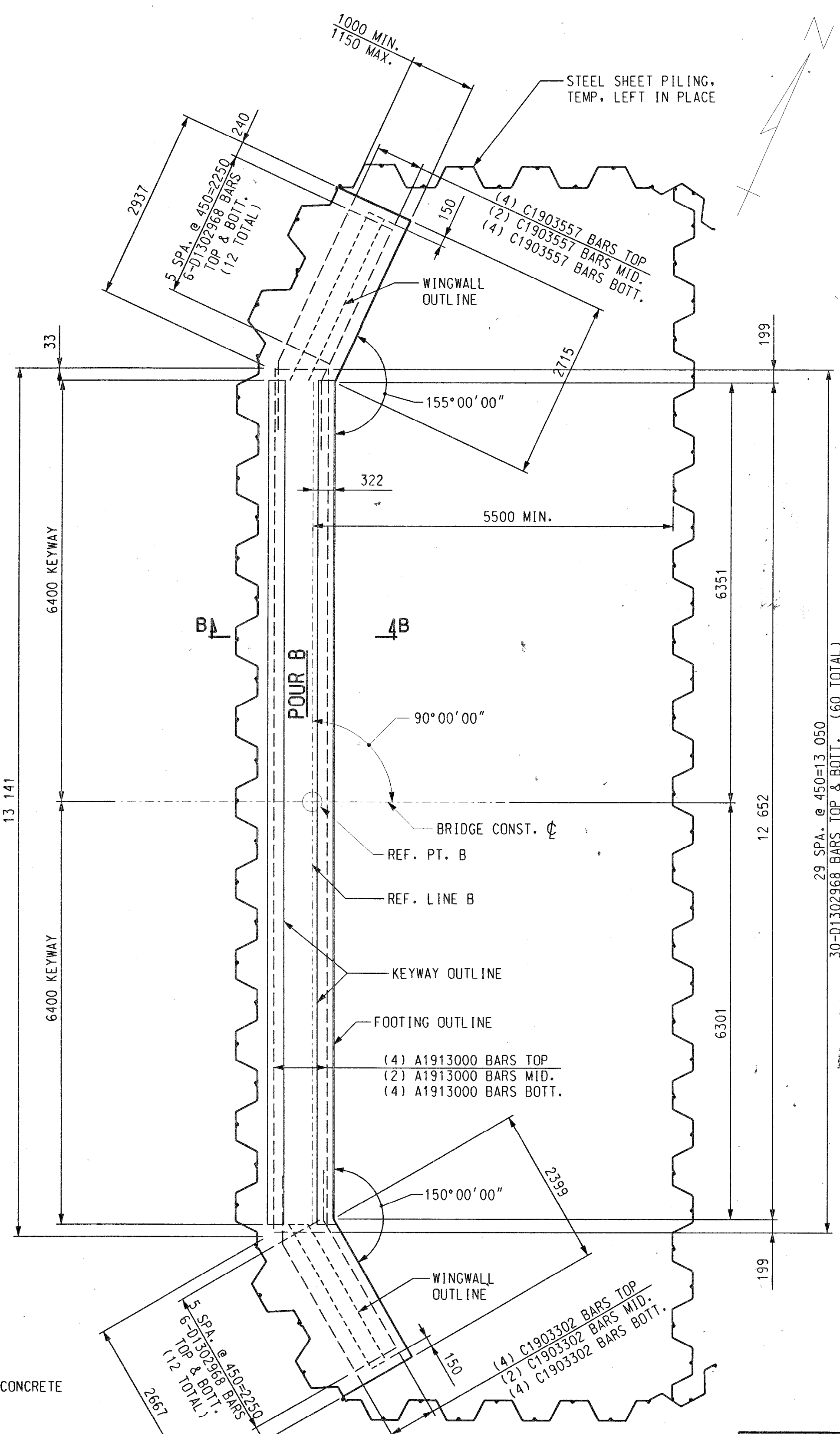


DETAIL PLAN OF RAIL POSTS
SCALE 1/4" = 1'-0"

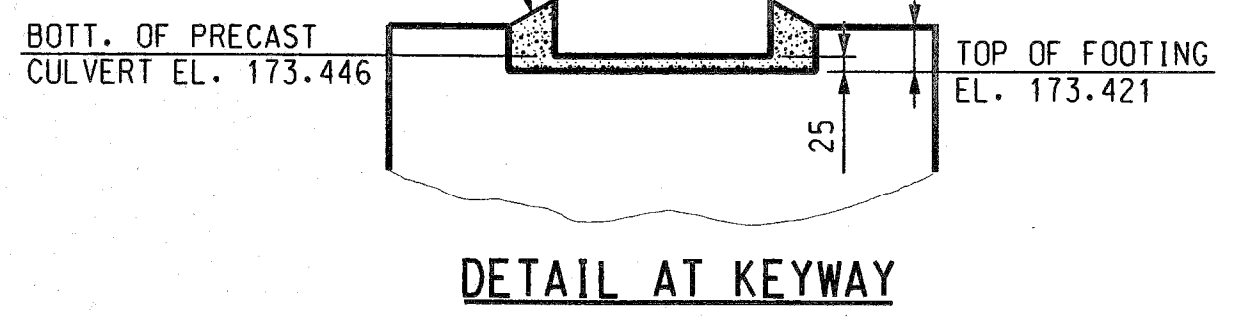
EXISTING
REINFORCED CONCRETE BRIDGE
OVER FOX CREEK
AT KLENK AVE.
CITY ENGINEER'S OFFICE



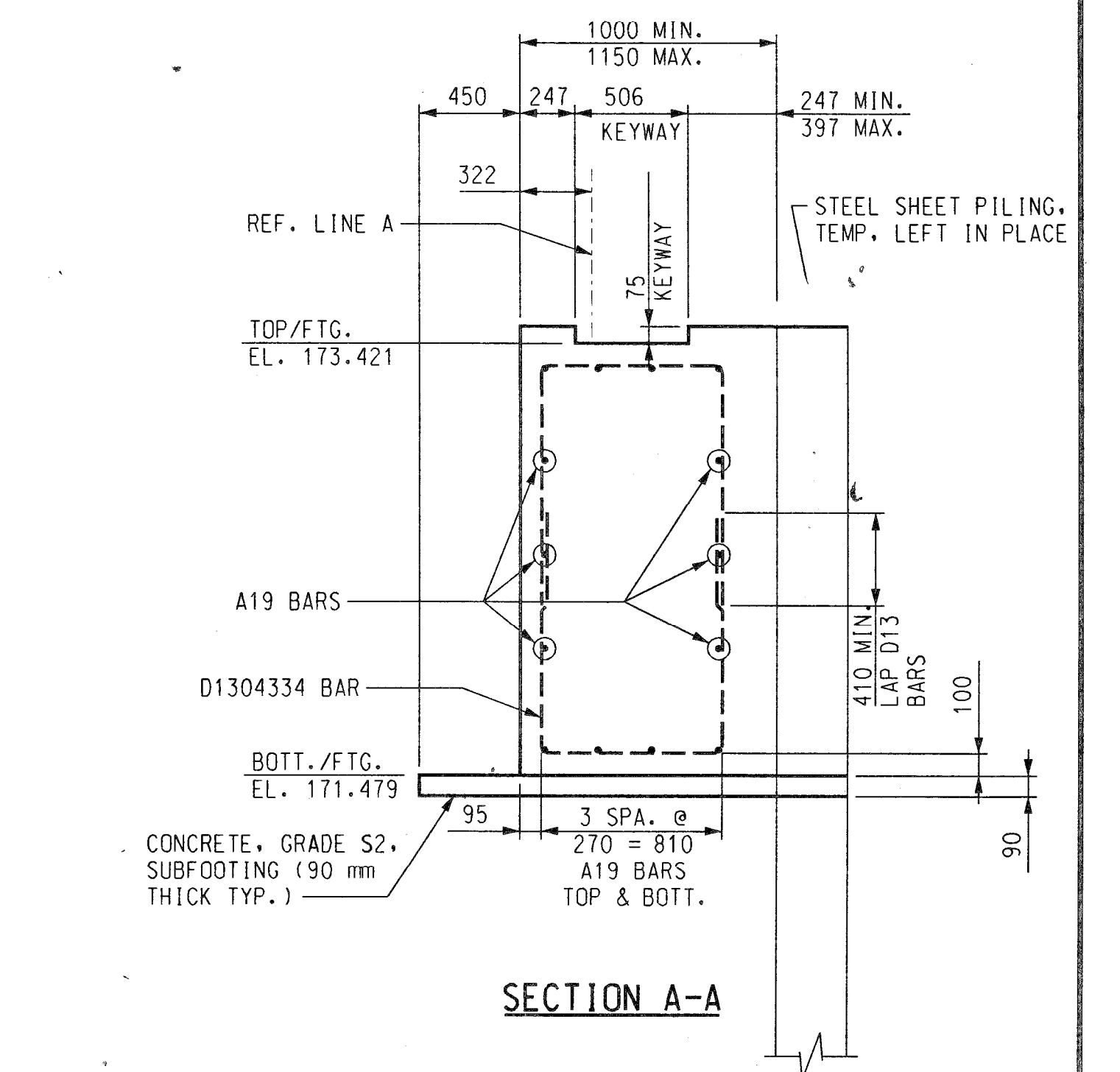
PLAN OF FOOTING (ABUTMENT A)



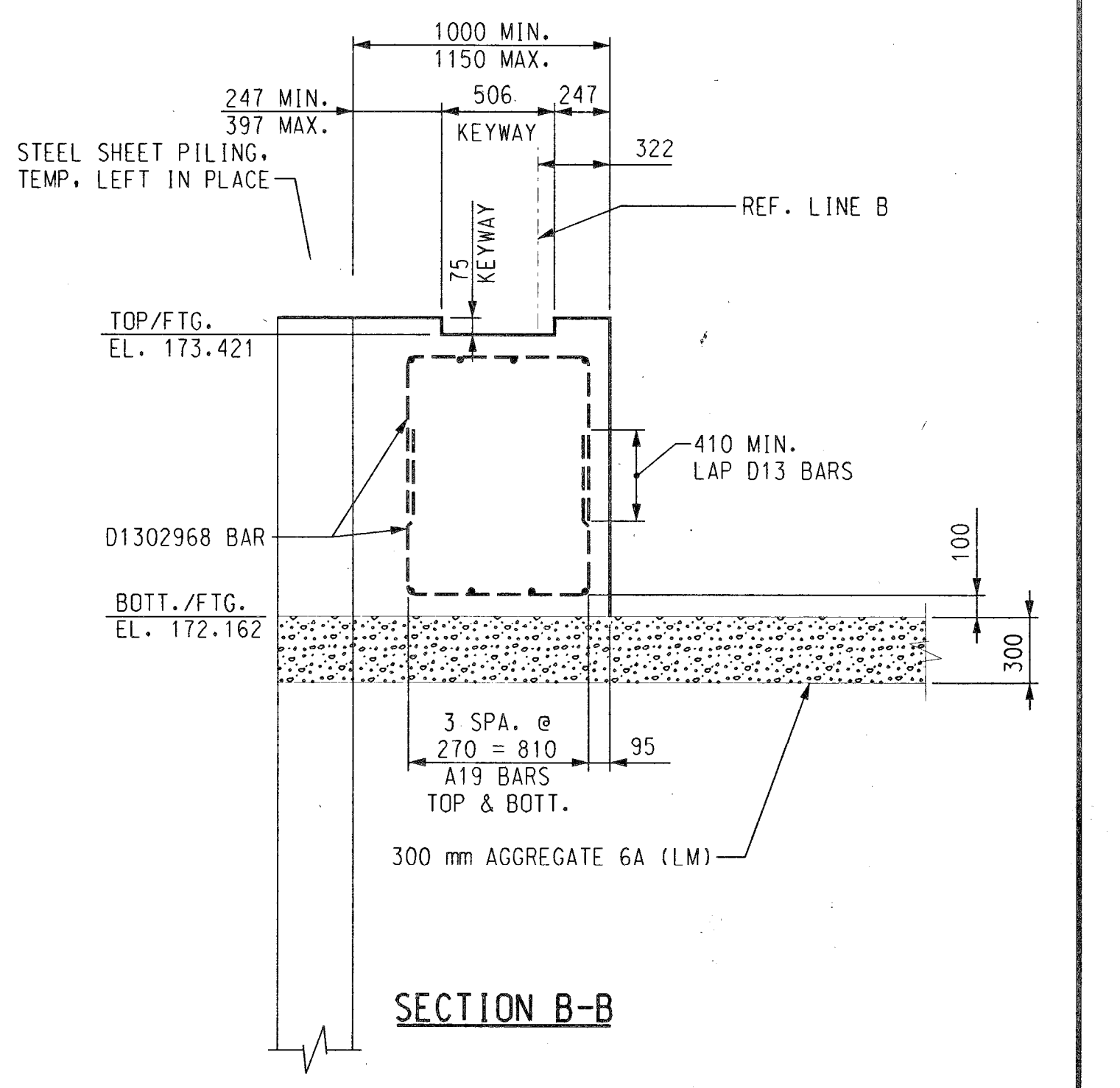
PLAN OF FOOTING (ABUTMENT B)



DETAIL AT KEYWAY



SECTION A-A



SECTION B-B

NOTES:
FOR ABUTMENT A AND B THE MAXIMUM FOUNDATION PRESSURE IS CALCULATED TO BE 278 kPa AVERAGE DEAD LOAD PLUS LIVE LOAD PRESSURE.

SUBSTRUCTURE CONCRETE QUANTITIES

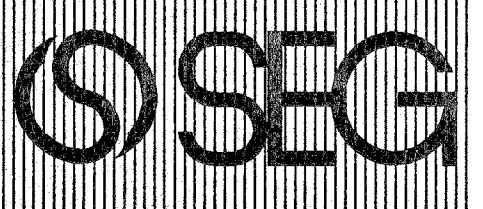
POUR	AMOUNT
A	59.4 m ³
B	29.9 m ³
TOTALS	89.0 m³

METRIC

DIMENSIONS ARE IN MILLIMETERS UNLESS OTHERWISE SHOWN. ELEVATIONS, COORDINATES, CURVE AND ALIGNMENT DATA ARE IN METERS. STATIONS ARE IN KILOMETERS + METERS.

REVISIONS	DESCRIPTION	DATE

DSGN BY	F.T.	7-97
DR'N BY	J.E.	7-97
CK'D BY	C.D.P.	7-97
APP'D BY		



SNELL ENVIRONMENTAL GROUP, INC.
151 W. CONGRESS, SUITE 328
DETROIT, MICHIGAN 48225
TELEPHONE (313) 961-4040

FEMI TALABI & ASSOCIATES INC.
615 GRIFFIN, SUITE 1505, DETROIT, MICHIGAN 48226



CITY OF DETROIT MICHIGAN

KORTE AVE. OVER THE FOX CREEK

FOOTING DETAILS

SCALE NOT TO SCALE
PROJECT NO. 9641-5160-02
SHEET NO. OF

FILE NAME: 06KORTFTG.DGN

UTILITIES

<p>AMERITECH 4000 ALLEN RD. ROOM 101 ALLEN PARK, MICHIGAN 48101 ATTN: DAVE BUCIENSKI PHONE No.: (313) 389-9819</p>	TELEPHONE
<p>CITY OF DETROIT WATER & SEWERAGE DEPT 735 RANDOLPH ST. DETROIT, MICHIGAN 48226 PHONE No.: (313) 224-4800</p>	WATER & SEWERAGE
<p>DETROIT EDISON 2000 SECOND AVE. ROOM 607 G.O. DETROIT, MICHIGAN 48226 ATTN: JOHN SQUIRES PHONE No.: (313) 235-6597</p>	ELECTRIC
<p>MICHIGAN CONSOLIDATED GAS CO. DRAFTING CLERK MAIN REPLACEMENT TEAM NOBLE SECOND FLOOR 3200 HOBSON DETROIT, MICHIGAN 48201 PHONE No.: (313) 577-7236</p>	GAS

EXISTING STRUCTURE

ONE SPAN REINFORCED CONCRETE ARCH STRUCTURE MEASURING 10.67 m AND RISE 1.52 m BUILT IN 1924. 7925mm CLEAR ROADWAY.

BENCHMARK

B.M. #62-254A ELEV. 174.852
CITY OF DETROIT, N.E. QUAD PHILIP RD. AND AVONDALE RD. INTERSECTION OF SIDEWALKS
B.M. #61-255 ELEV. 174.605
CITY OF DETROIT, N.E. QUAD CHALMERS RD. AND SCRIPPS RD. INTERSECTION OF SIDEWALKS

PROPOSED REPLACEMENT KORTE AVE. BRIDGE
MDOT - B01 OF 1086
CITY - BW-249

REMOVE, SALVAGE & REPLACE 5 m FENCE

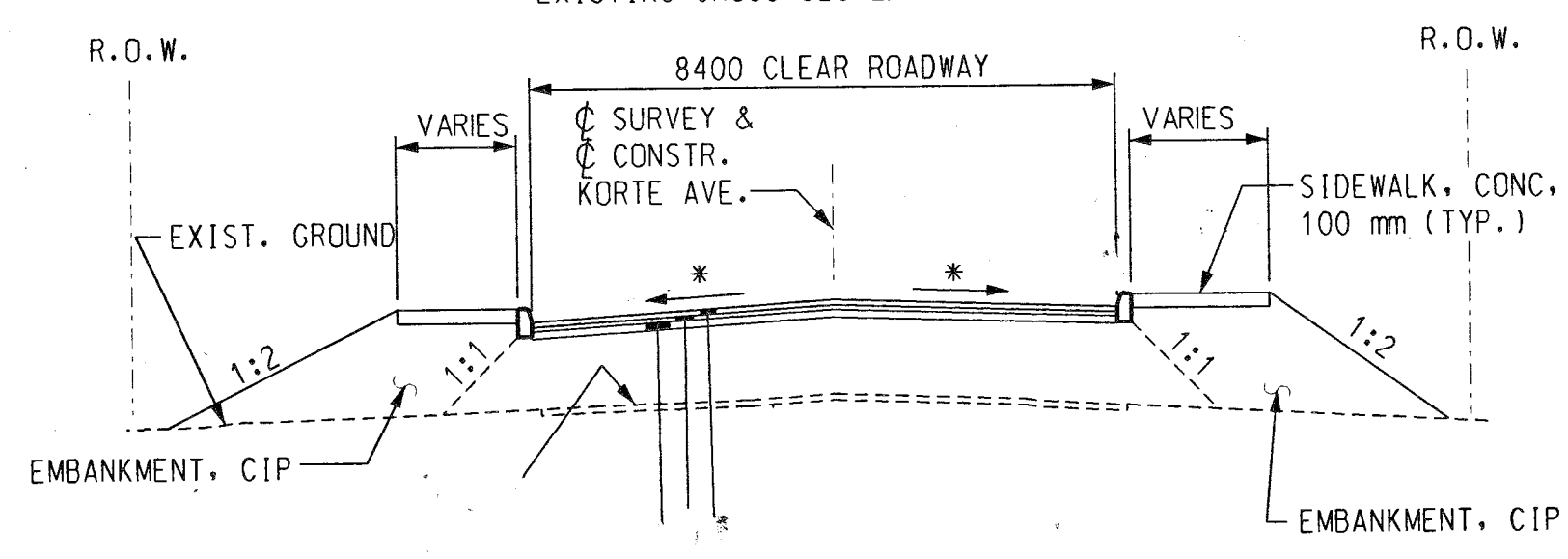
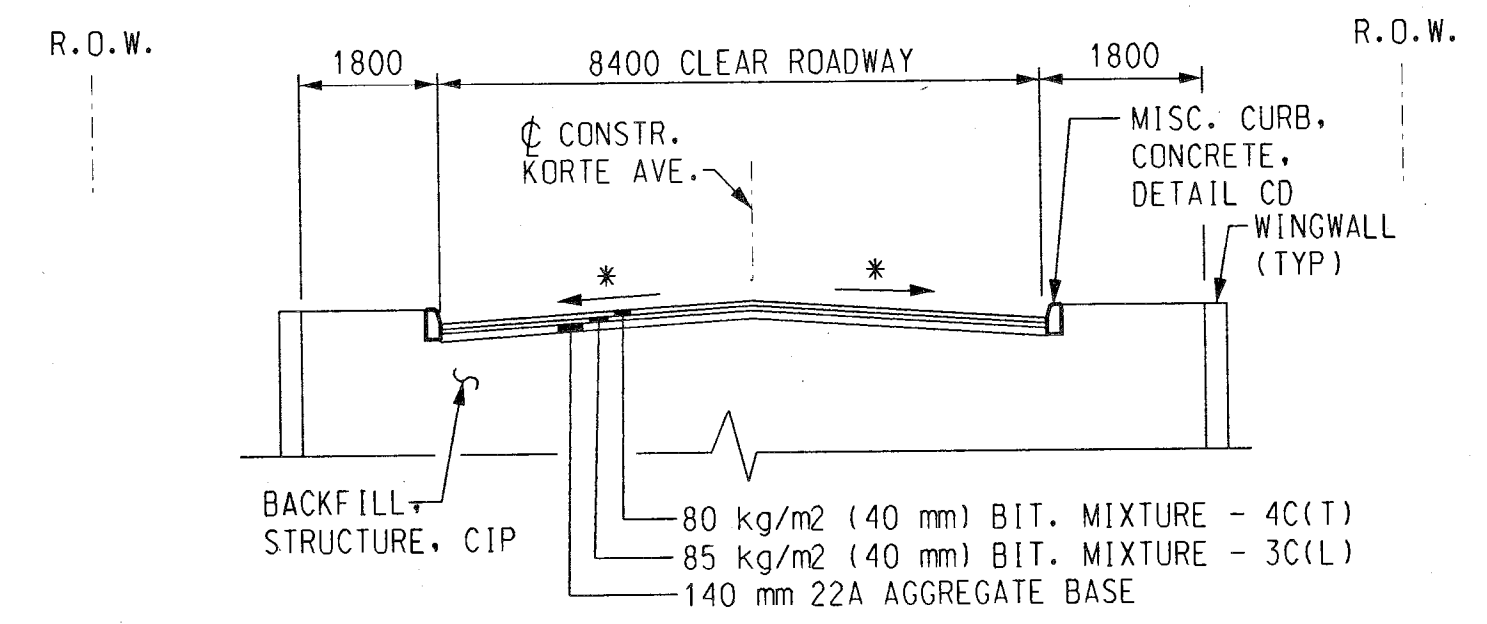
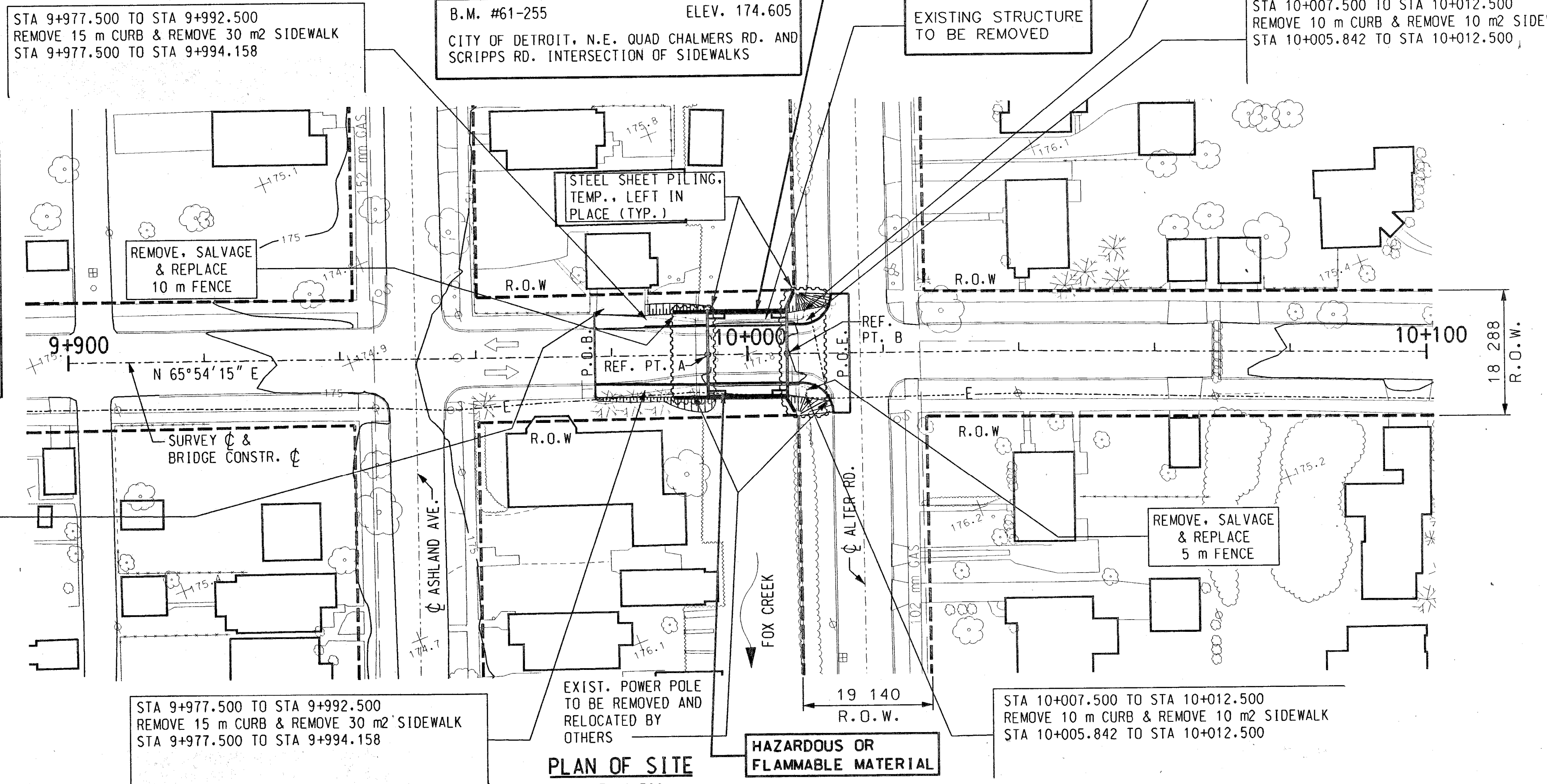
EXISTING STRUCTURE TO BE REMOVED

STA 10+007.500 TO STA 10+012.500 REMOVE 10 m CURB & REMOVE 10 m² SIDEWALK
STA 10+005.842 TO STA 10+012.500

WITNESSES

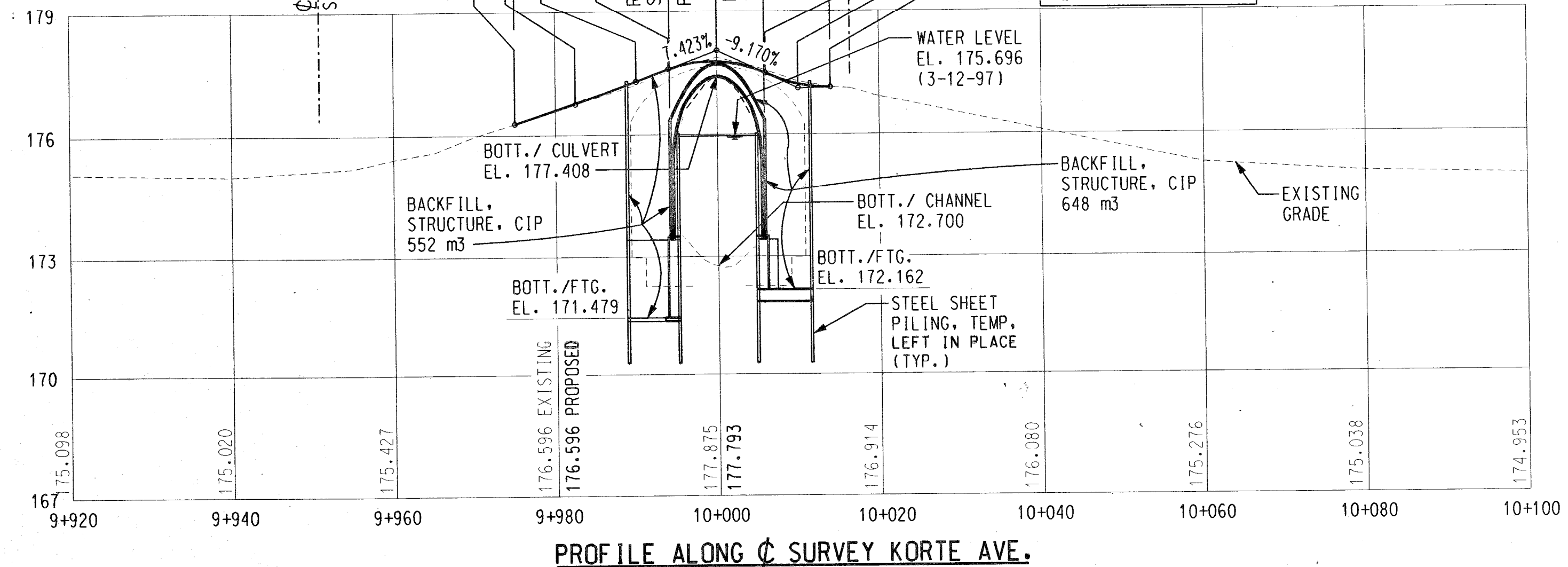
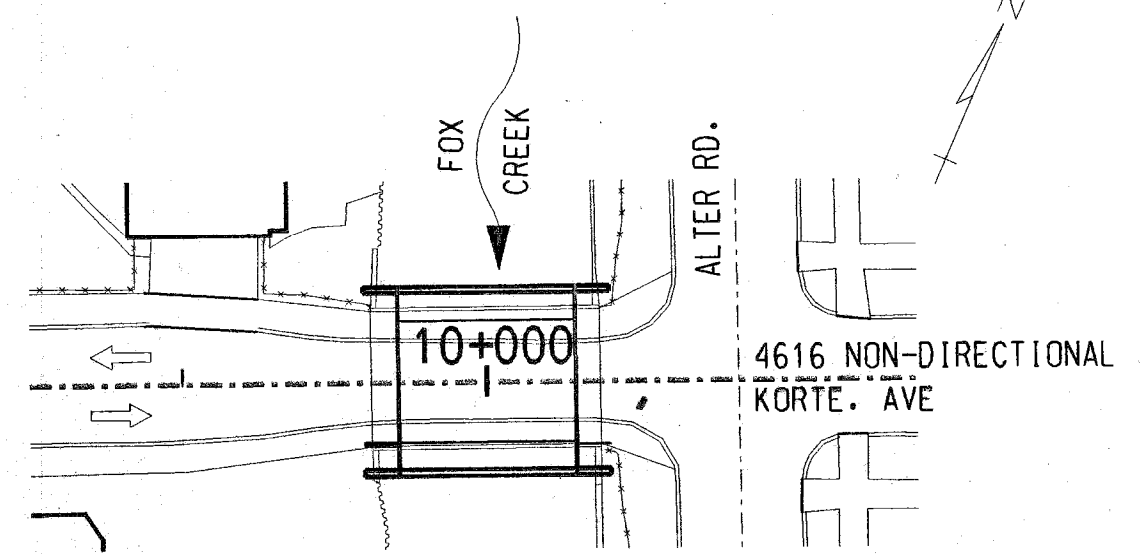
WITNESS TO CONTROL POINT 102: STA. 9+900 (MAG. NAIL)	
N 80° W SE CORNER HOUSE	18.92 m
S 50° W POWER POLE	15.99 m
S 60° E POWER POLE	10.15 m
WITNESS TO CONTROL POINT 103: STA. 10+040 (MAG. NAIL)	
N 85° W 762 mm ELM	13.36 m
S 10° E POWER POLE	6.25 m
N 60° W SW CORNER HOUSE	12.10 m

DRIVEWAYS TO BE PAVED TO PROVIDE A SMOOTH TRANSITION BETWEEN PROPOSED PAVEMENT AND EXISTING DRIVEWAY AS DIRECTED BY ENGINEER.



SCALE: 1:500
CONTOUR 0.5m

VPI STA = 9+982.500 VPI EL = 176.743 CURVE LEN = 15.000 K = 13.125 E = 0.021 G ₁ = (+)6.280% G ₂ = (+)7.423%	VPC STA = 9+975.000 VPC EL = 176.272	VPT STA = 9+990.000 VPT EL = 177.300	VPC STA = 9+994.000 VPC EL = 177.597	VPT STA = 10+016.607 VPT/AVC STA = 10+006.000 VPT/AVC EL = 177.492	VPI STA = 10+000.00 VPI EL = 178.042 CURVE LEN = 12.000 K = 0.723 E = -0.249 G ₁ = (+)7.423% G ₂ = (-)9.170%
VPC STA = 9+975.000 VPC EL = 176.272	VPT STA = 9+990.000 VPT EL = 177.300	VPC STA = 9+994.000 VPC EL = 177.597	VPT STA = 10+016.607 VPT/AVC STA = 10+006.000 VPT/AVC EL = 177.492	VPI STA = 10+010.000 VPI EL = 177.125 CURVE LEN = 8.000 K = 0.832 E = 0.096 G ₁ = (-)9.170% G ₂ = (+)10.450%	



TYPICAL APPROACH SECTION
STA. 9+975 TO STA. 9+989.158 & STA. 10+005.842 TO STA. 10+007

* TRANSITION FROM 0% AT BRIDGE TO MATCH EXISTING CROSS SLOPE AT APPROACHES

NOTES:

THE WORK COVERED BY THESE PLANS INCLUDES MAINTAINING TRAFFIC, REMOVAL OF EXISTING BRIDGE, CONSTRUCTION OF THE PROPOSED BRIDGE AND APPROACH WORK.

THE CONTRACTOR SHALL LOCATE ALL ACTIVE UNDERGROUND UTILITIES PRIOR TO STARTING WORK AND SHALL CONDUCT HIS OPERATIONS IN SUCH A MANNER AS TO ENSURE THAT THOSE UTILITIES NOT REQUIRING RELOCATION WILL NOT BE DISTURBED.

KORTE AVE. TRAFFIC IS TO BE DETOURED OVER THE EXISTING ROADS.

DATUM REFERS TO N.A.V.D. DATUM.

WATER LEVEL IS SUBJECT TO CHANGE. THE CONTRACTOR IS RESPONSIBLE FOR MAKING HIS OWN DETERMINATION OF WATER LEVELS THAT WILL EXIST DURING CONSTRUCTION.

MEASURES SHALL BE TAKEN TO PREVENT DEBRIS FROM FALLING FROM THE STRUCTURE. IF DEBRIS FALLS INTO THE WATERWAY, IT SHALL BE REMOVED WITHIN 24 HOURS. SINCE DISTURBANCE OF THE WATERWAY BOTTOM MAY BE AS HARMFUL AS THE DEBRIS ITSELF, THE PREVENTIVE MEASURES MUST BE MADE AS EFFECTIVE AS POSSIBLE.

TEMPORARILY STORED EXCAVATED MATERIAL SHALL NOT BE ALLOWED TO ERODE INTO THE WATERCOURSE.

ALL DISTURBED EXISTING GROUND AND ANY NEW FILL SLOPES SHALL BE SEED, FERTILIZED, AND MULCHED AS DIRECTED BY THE ENGINEER. TO BE INCLUDED IN THE PAY ITEMS "SEEDING, MIXTURE TUF," "FERTILIZER, CHEMICAL NUTRIENT, CLASS A," AND "MULCH BLANKET."

METRIC
DIMENSIONS ARE IN MILLIMETERS UNLESS OTHERWISE SHOWN. ELEVATIONS, COORDINATES, CURVE AND ALIGNMENT DATA ARE IN METERS. STATIONS ARE IN KILOMETERS + METERS.

DESIGN BY	F.T.	7-97
DR'N BY	J.E.	7-97
CK'D BY	C.D.P.	7-97
APP'D BY		

SEG
SNELL ENVIRONMENTAL GROUP, INC.
151 W. CONGRESS, SUITE 328
DETROIT, MICHIGAN 48226
TELEPHONE (313) 961-4040

FTA
FEMI TALABI & ASSOCIATES INC.
615 GRESHAM, SUITE 1505, DETROIT, MICHIGAN 48226

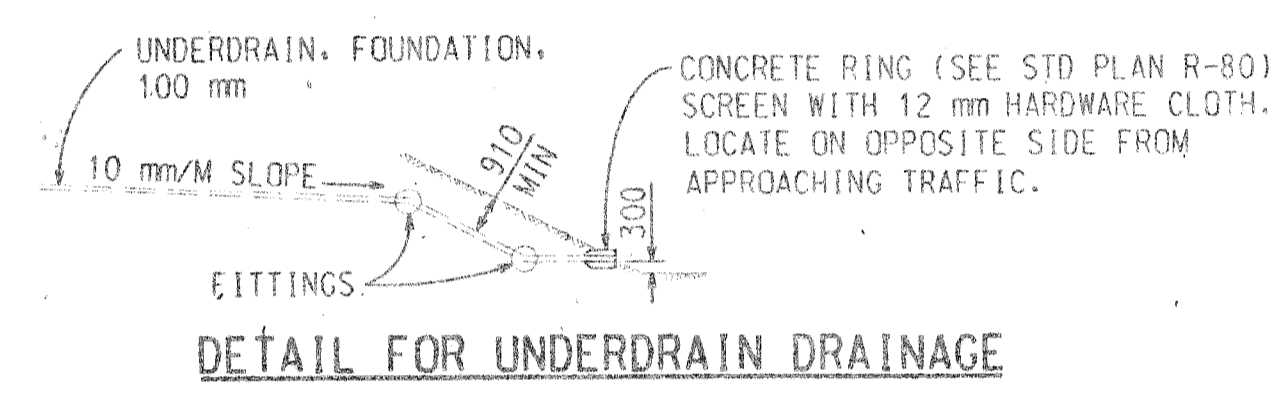
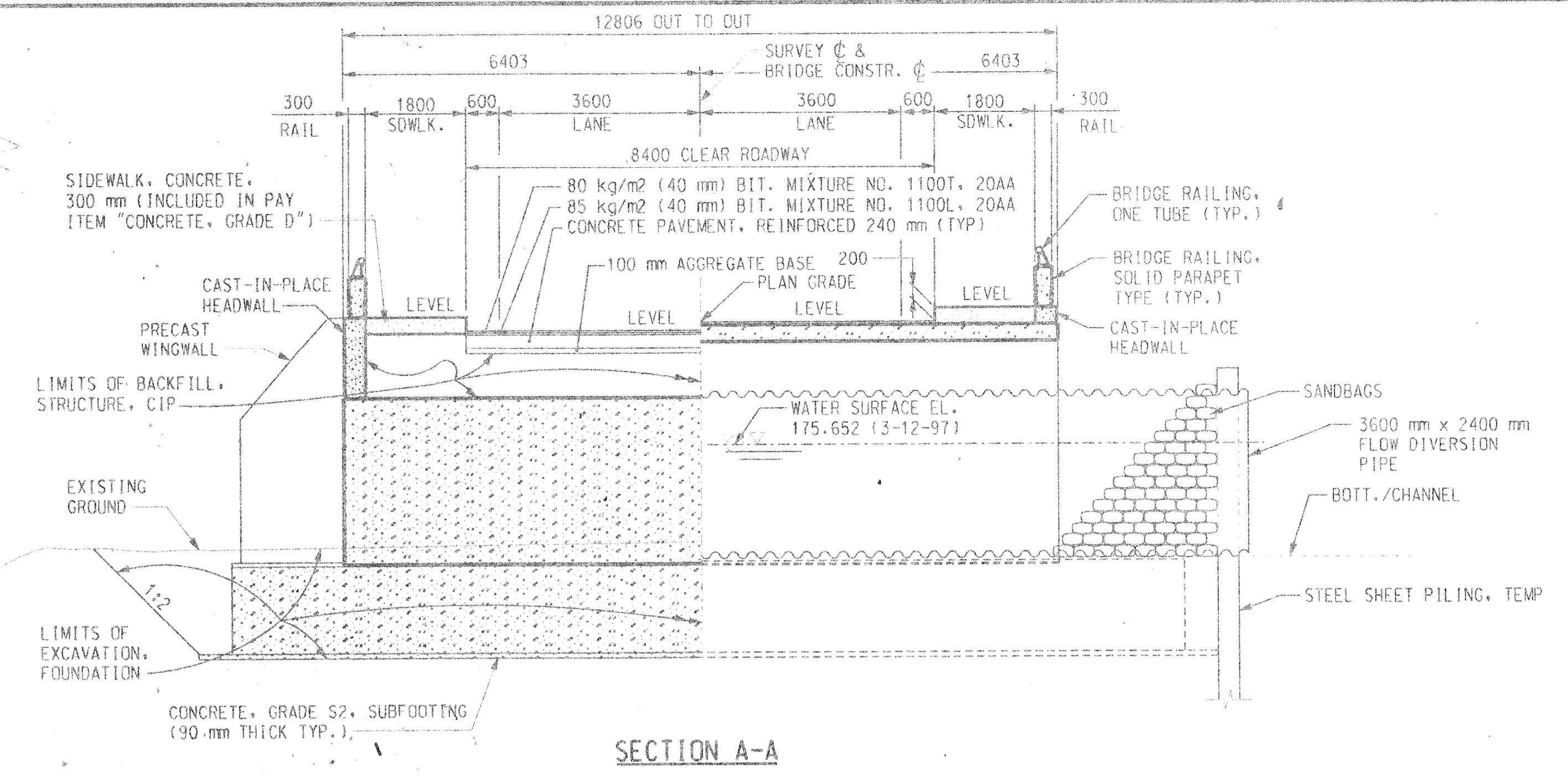
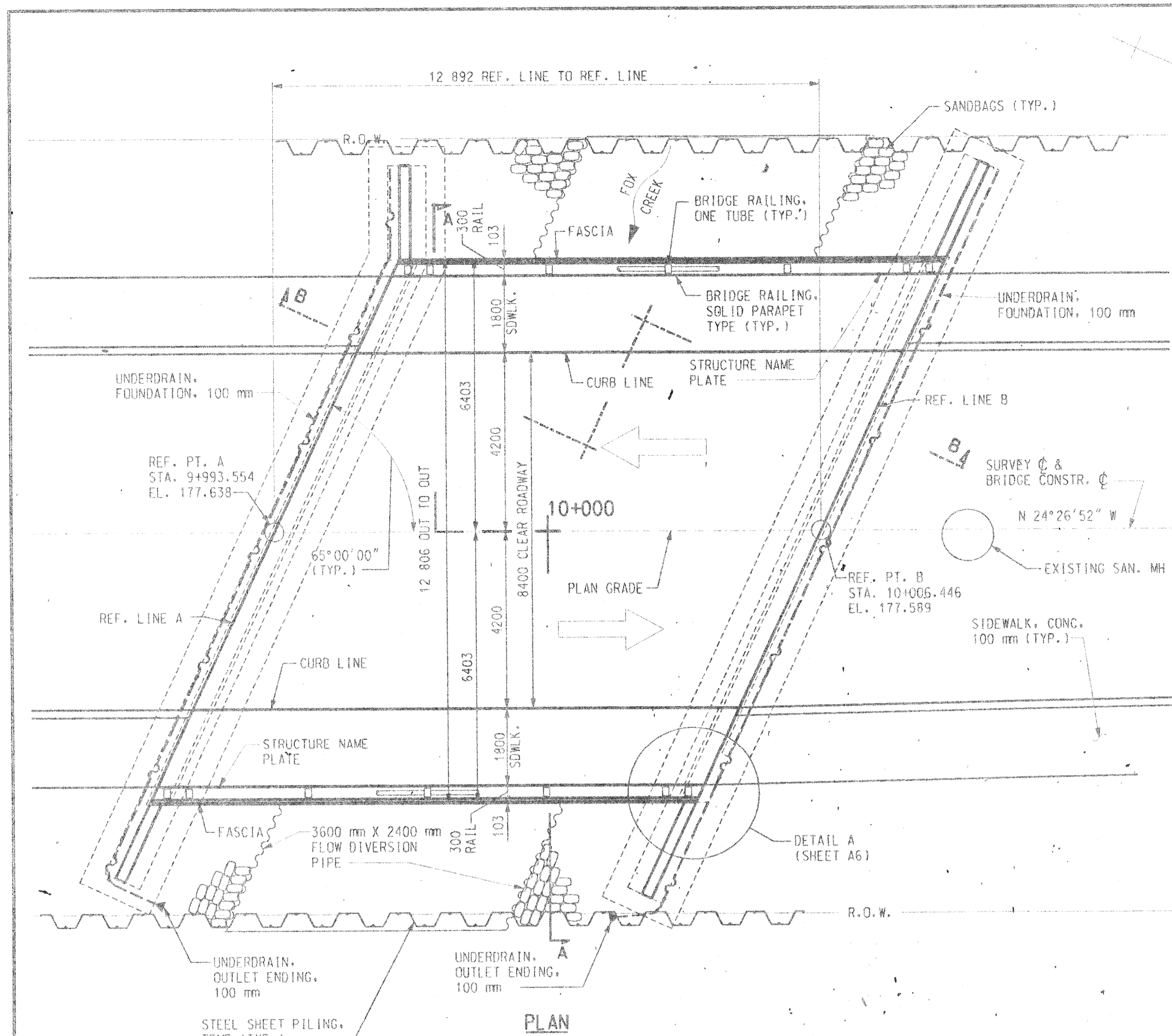
CITY OF DETROIT MICHIGAN

KORTE AVE. OVER THE FOX CREEK

GENERAL PLAN OF SITE

SCALE	NOT TO SCALE
PROJECT NO.	9641-5160-02
SHEET NO.	OF

FILE NAME: C:\CORS\IT-DGN



NOTES:

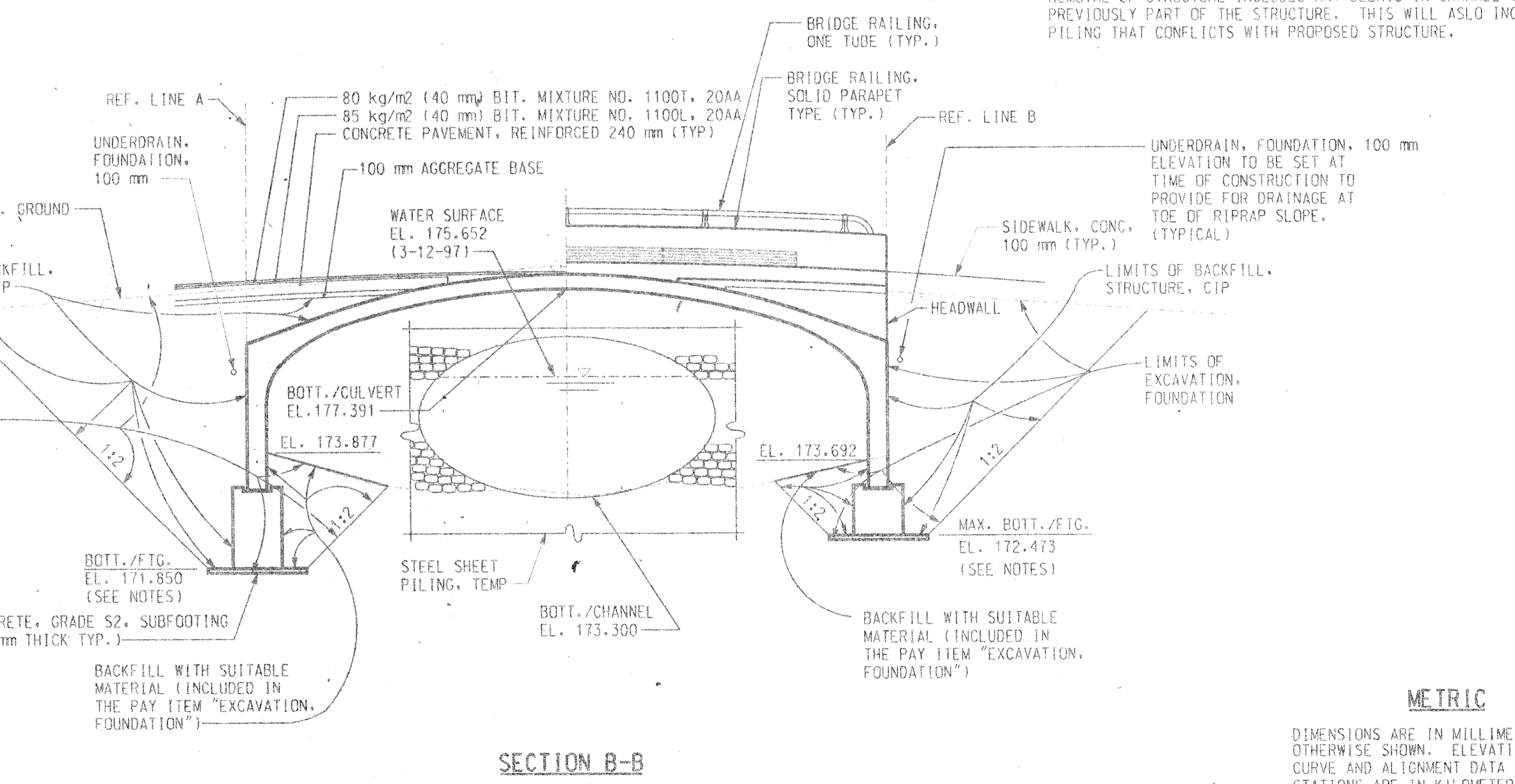
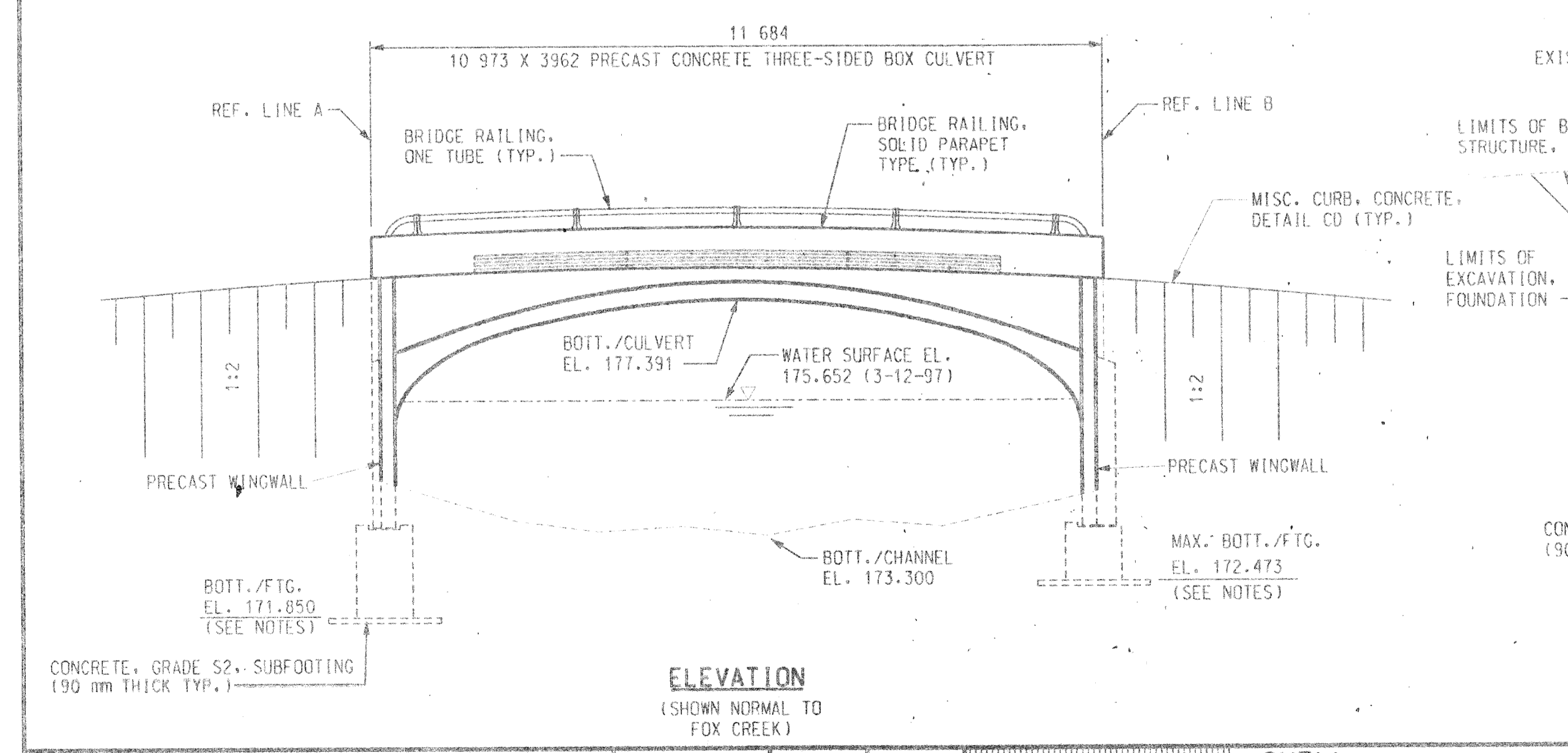
THE DESIGN OF THIS STRUCTURE IS BASED ON CURRENT AASHTO STANDARD SPECIFICATIONS FOR HIGHWAY BRIDGES MS18 LOADING. LIVE LOAD PLUS IMPACT DEFLECTION DOES NOT EXCEED 1/1000 OF SPAN LENGTH.

THE TOP OF THE ROADWAY AND TOPS OF SIDEWALKS ARE PARALLEL TO THE VERTICAL CURVE.

STEEL SHEET PILING, TEMP., FLOW DIVERSION PIPE, SANDBAGS, AND DEWATERING SHALL BE INCLUDED IN THE PAY ITEM "FLOW DIVERSION".

FOOTINGS SHALL BE EMBEDDED IN "HARD SILTY CLAY" AS DIRECTED BY ENGINEER.

REMOVAL OF STRUCTURE INCLUDES ANY DEBRIS IN CHANNEL THAT WAS PREVIOUSLY PART OF THE STRUCTURE. THIS WILL ALSO INCLUDE ANY PILING THAT CONFLICTS WITH PROPOSED STRUCTURE.



METRIC

DIMENSIONS ARE IN MILLIMETERS UNLESS OTHERWISE SHOWN. ELEVATIONS, COORDINATES, CURVE AND ALIGNMENT DATA ARE IN METERS. STATIONS ARE IN KILOMETERS + METERS.

REVISIONS	DESIGN BY	M.A.M.	6-97		SNELL ENVIRONMENTAL GROUP, INC. A PCL Company 151 W. CONGRESS ST., SUITE 328 DETROIT, MICHIGAN 48226 TELEPHONE (313) 561-2040		CITY OF DETROIT MICHIGAN	ASHLAND AVE. OVER THE FOX CREEK (BW-245)	GENERAL PLAN OF STRUCTURE	SCALE	NOT TO SCALE
	DR'N BY	R.J.D.	6-97							PROJECT NO.	9641-5160-03
	CK'D BY	R.G.W.	6-97							SHEET NO.	A4 OF 19
	FINAL CK'D BY	M.D.W.	2-99							APP'D BY	