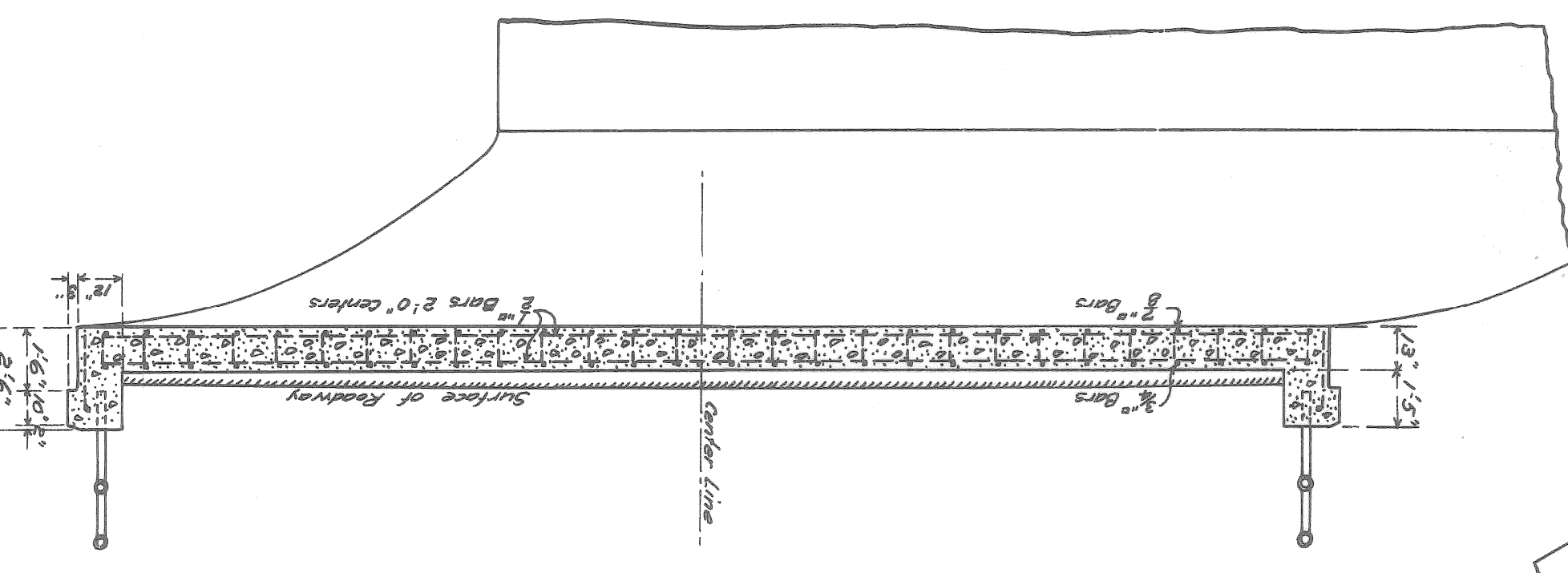
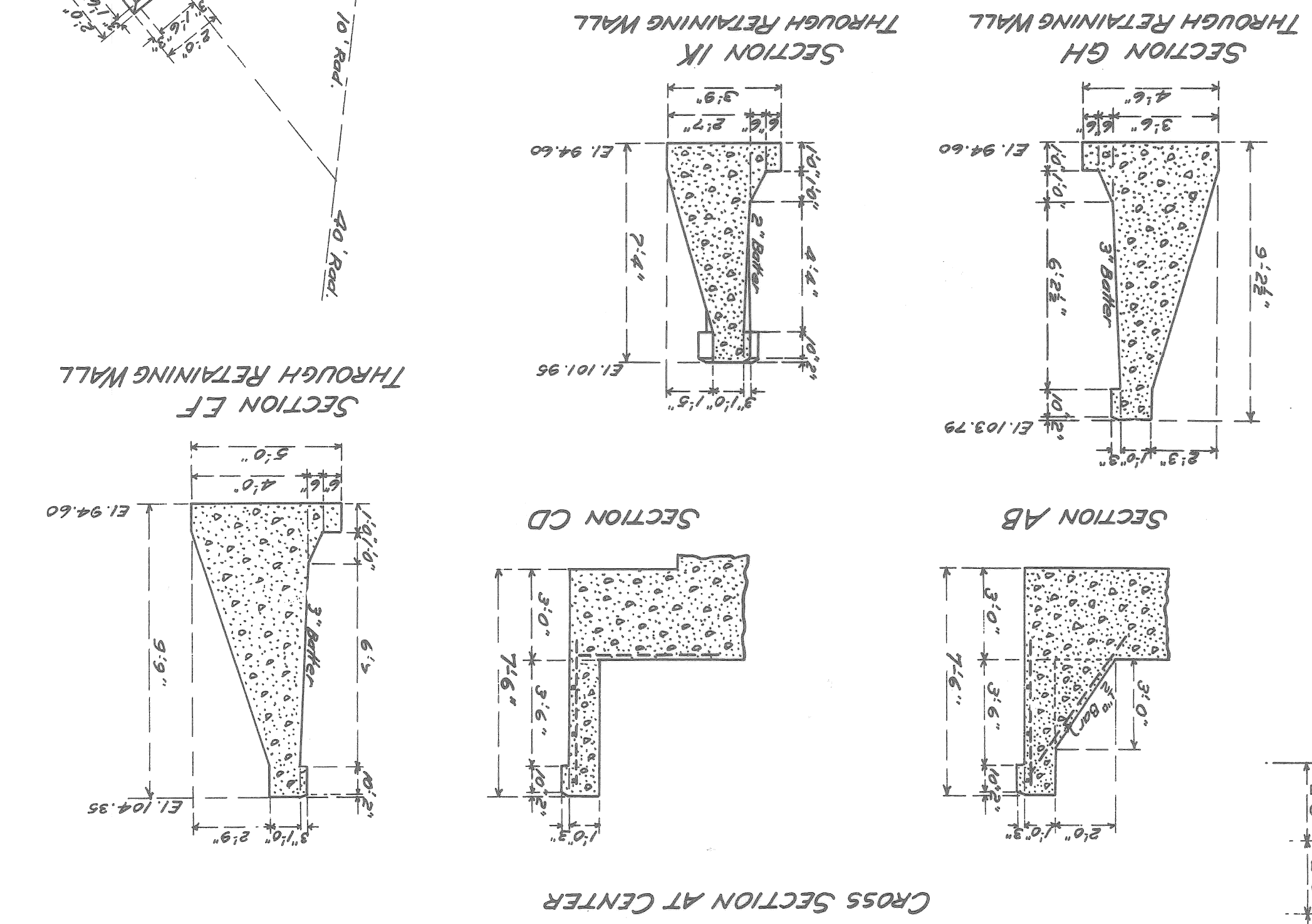
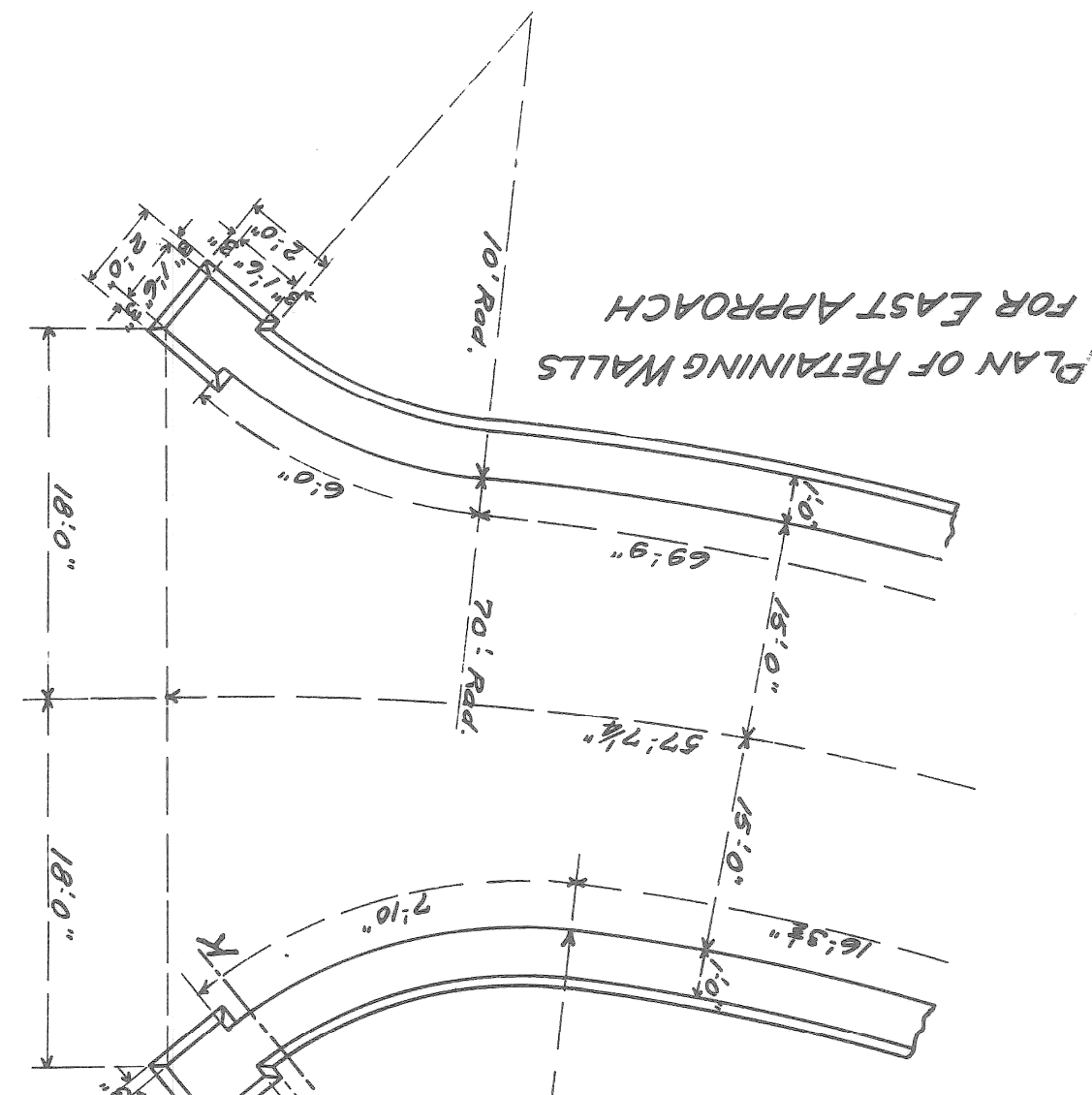


**REINFORCED CONCRETE SKEW ARCH
OVER FOX CREEK
ON RIVERSIDE BOULEVARD
OVER FOX CREEK**

PLAN OF 43'-0"

CITY ENGINEERS OFFICE
DETROIT, MICHIGAN
May, 26th, 1909
J.A.S.



All Copings to be 1:1:2 Concrete
Arch Rings and Wells-1:2:4 Concrete
Foundations and Retaining Walls-1:3:6 Concrete
Reinforcing to be Corrugated or Twisted Steel Bars
All material from excavations to be so placed that the surplus after back filling will be within the limits of contractor.

