

CITY OF DETROIT
DEPARTMENT OF PUBLIC WORKS
 OFFICE OF CITY ENGINEER

DIVISION OF GRADE SEPARATION AND BRIDGES

LOCATION MAP
RETAINING WALL ALONG FOX CREEK
 ON ASHLAND AVE.
 NORTH OF JEFFERSON AVE.

SCALE: AS SHOWN

SECTION A-A
 DETAIL OF EXPANSION JOINT
 Between Exp. Joint # 8 and # 9
 SECTION B-B
 DETAIL OF EXPANSION JOINT
 Between Exp. Joint # 9 and # 10
 SECTION C-C
 SECTION OF WALL
 AT Exp. Joint # 9
 SECTION D-D
 SECTION OF WALL
 AT Exp. Joint # 8

Hand rail to extend full length of wall
 1/2" dia. Pipe Plain Fittings
 Posts 10'-0" c.c.
 Horizontal runs railed to sliding fit Sliding cleave expansion joints to be provided 50' c.c.

Note
 Specifications for Ashland Ave Bridge for material of construction for Concrete Wall will be furnished.

Wall to be covered in alternate sections
 Bench Mark N.E. Corner Jefferson & Ashland Ave. and N.E. Corner Ashland & Jeffrey Ave. (See Grade Separation Book # 12, p. 28)

Increases uniformly from 6'-0" to 3'-6" at joint # 9
 Base increases uniformly from 5'-0" at joint # 8 to 6'-6" at joint # 9 and continues 6'-6" until it meets N.E. Corner of Jefferson Ave. Bridge

1/2" dia. Pipe Plain Fittings
 Posts 10'-0" c.c.
 Horizontal runs railed to sliding fit Sliding cleave expansion joints to be provided 50' c.c.

1/2" dia. Pipe Plain Fittings
 Posts 10'-0" c.c.
 Horizontal runs railed to sliding fit Sliding cleave expansion joints to be provided 50' c.c.

1/2" dia. Pipe Plain Fittings
 Posts 10'-0" c.c.
 Horizontal runs railed to sliding fit Sliding cleave expansion joints to be provided 50' c.c.

1/2" dia. Pipe Plain Fittings
 Posts 10'-0" c.c.
 Horizontal runs railed to sliding fit Sliding cleave expansion joints to be provided 50' c.c.

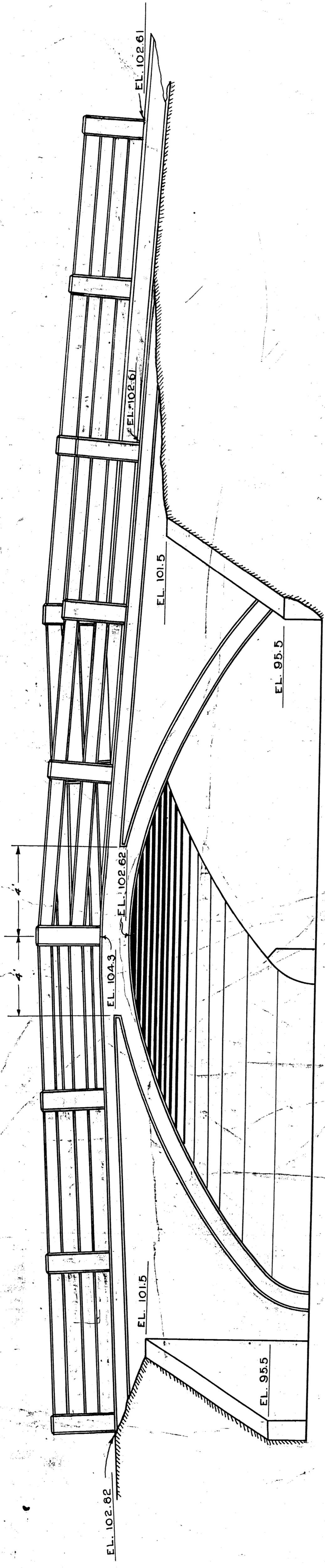
1/2" dia. Pipe Plain Fittings
 Posts 10'-0" c.c.
 Horizontal runs railed to sliding fit Sliding cleave expansion joints to be provided 50' c.c.

1/2" dia. Pipe Plain Fittings
 Posts 10'-0" c.c.
 Horizontal runs railed to sliding fit Sliding cleave expansion joints to be provided 50' c.c.

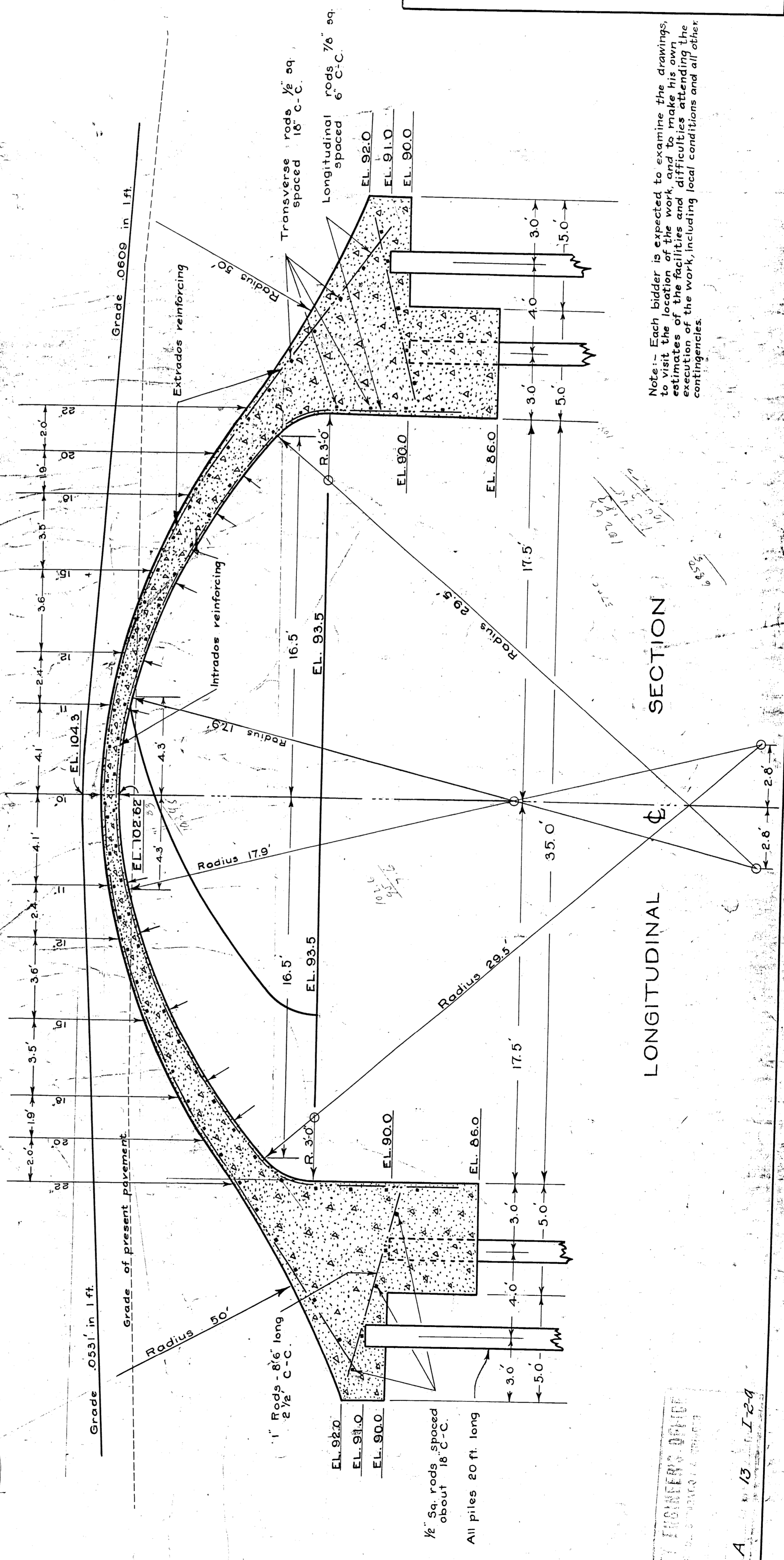
1/2" dia. Pipe Plain Fittings
 Posts 10'-0" c.c.
 Horizontal runs railed to sliding fit Sliding cleave expansion joints to be provided 50' c.c.

1/2" dia. Pipe Plain Fittings
 Posts 10'-0" c.c.
 Horizontal runs railed to sliding fit Sliding cleave expansion joints to be provided 50' c.c.

116



ELEVATION



LONGITUDINAL SECTION

Note: All pavements, sidewalks, and such portion of fill as is not obtained from excavations made in course of bridge construction, will be made by the City of Detroit.

APPROVED: *Charles C. Whittell*
City Engineer

APPROVED: *W. H. Wood*
Asst Engineer

**ASHLAND AVE. BRIDGE
OVER FOX CREEK
SOUTH OF EAST JEFFERSON
CONCRETE ARCH**

CITY OF DETROIT
CITY ENGINEERS OFFICE
AUGUST 21, 1917.

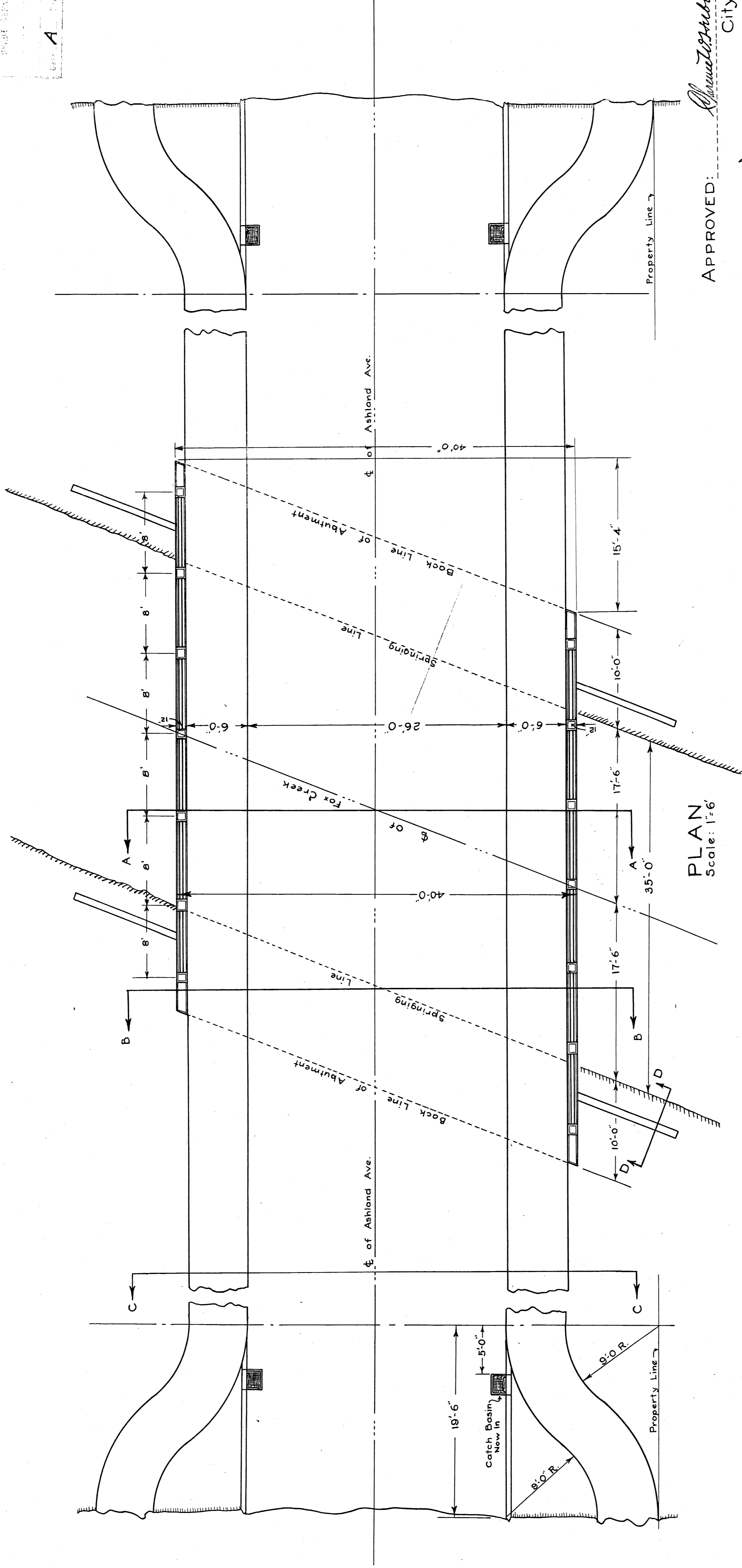
Scale: 1" = 3' Computed *W. H. Wood* Drawn: *M. S. G.* Checked: *W. H. Wood* Traced: *M. S. G.*

Note: Each bidder is expected to examine the drawings, to visit the location of the work, and to make his own estimates of the facilities and difficulties attending the execution of the work, including local conditions and all other contingencies.

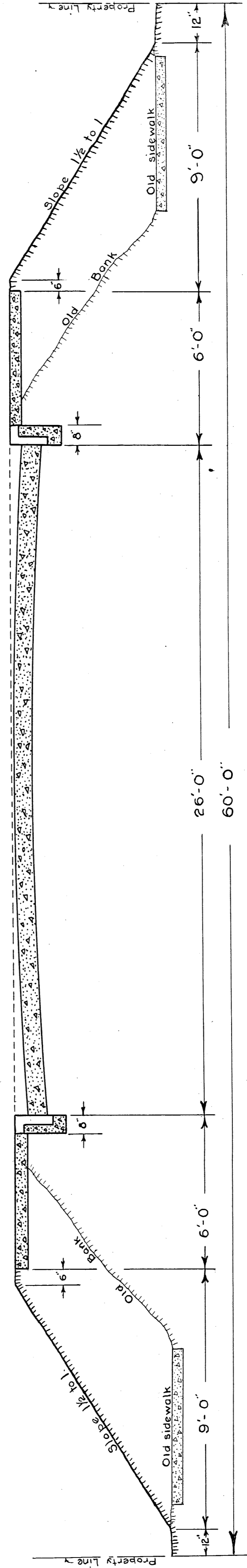
CITY ENGINEERS OFFICE
AUGUST 21, 1917

11-13
F. W. 245-5

CITY ENGINEERS OFFICE
DRAWING NO. 245-6
A 13 I-26



PLAN
Scale: 1" = 6'



SECTION C-C
Scale: 1" = 3'

APPROVED: *Alvanus H. M. Bell*
City Engineer

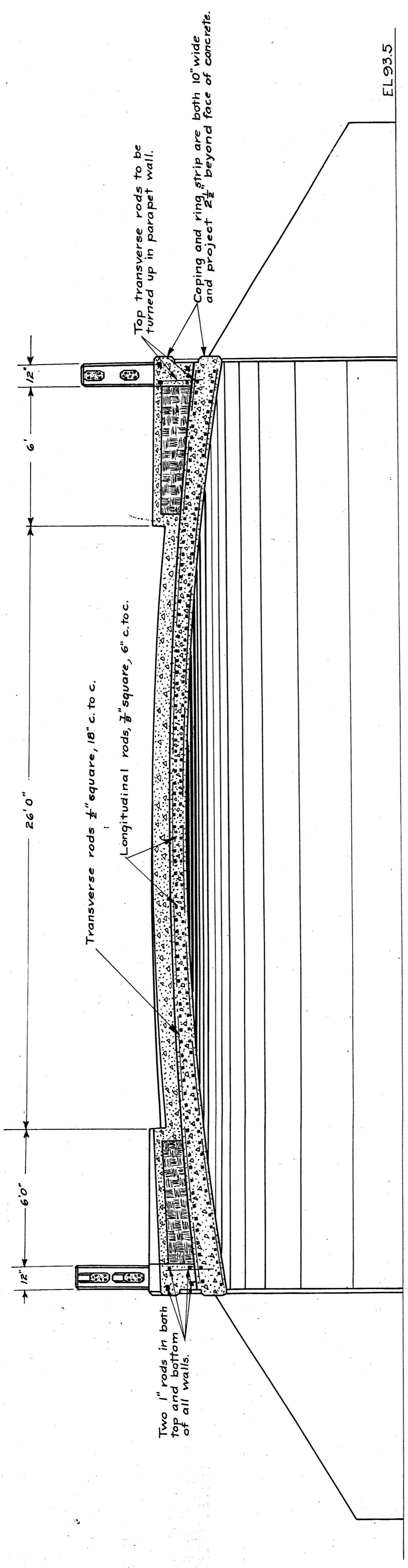
APPROVED: *W. H. Hubbard*
Asst. Engineer

ASHLAND AVE. BRIDGE OVER FOX CREEK SOUTH OF EAST JEFFERSON CONCRETE ARCH

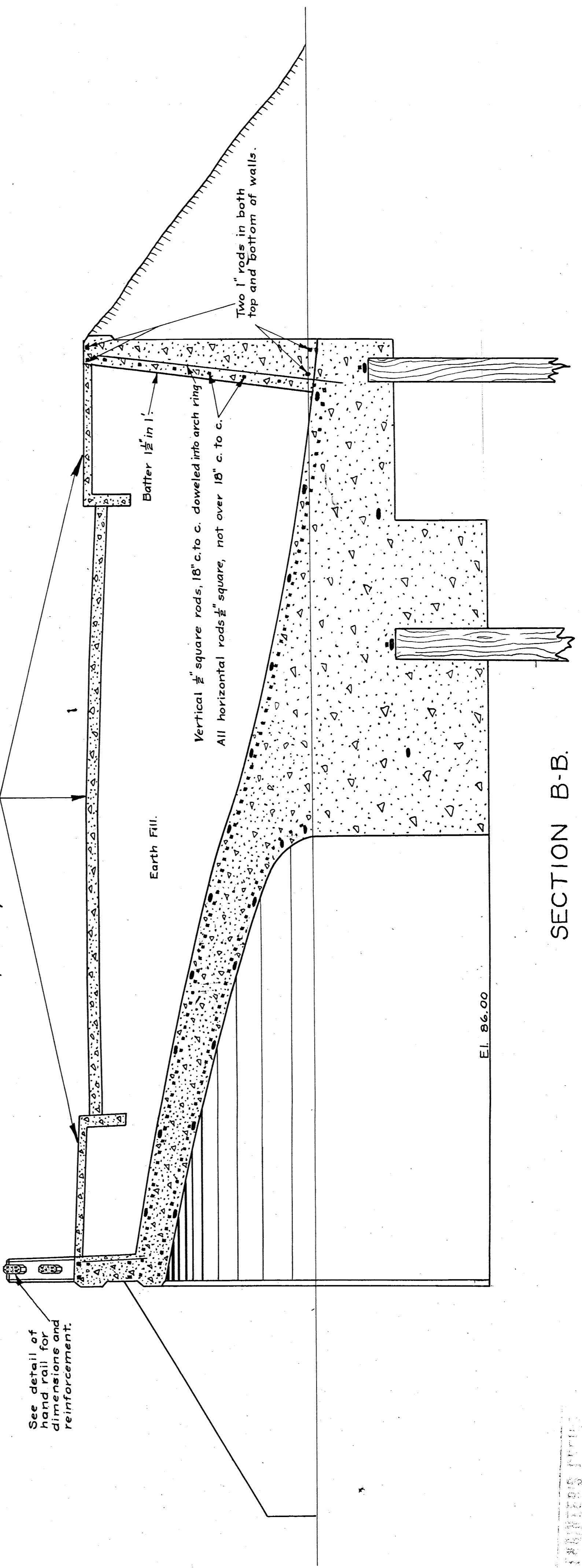
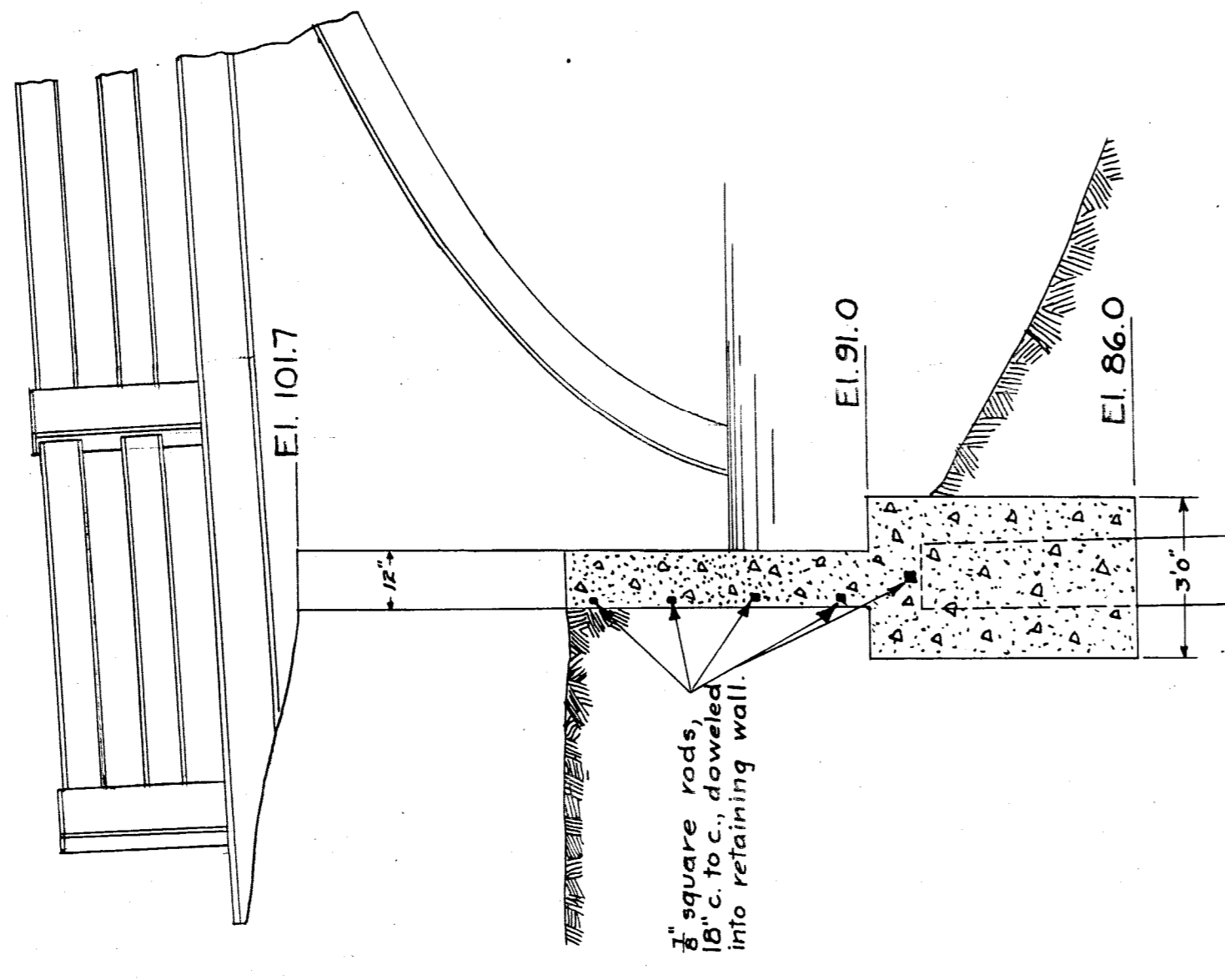
CITY OF DETROIT
CITY ENGINEERS OFFICE
AUGUST 21, 1917.

Scale: As Shown | Computed | Drawn: W.S.S. | Checked: J.H.H. | Traced: J.H.H.

A-13 II-2
File BW 245-6
Bw 245
3/6



SECTION A-A.



SECTION B-B.

SECTION D-D.

APPROVED: *Shaw-Walsh*
City Engineer.

APPROVED: *W. H. ...*
Asst. Engineer.

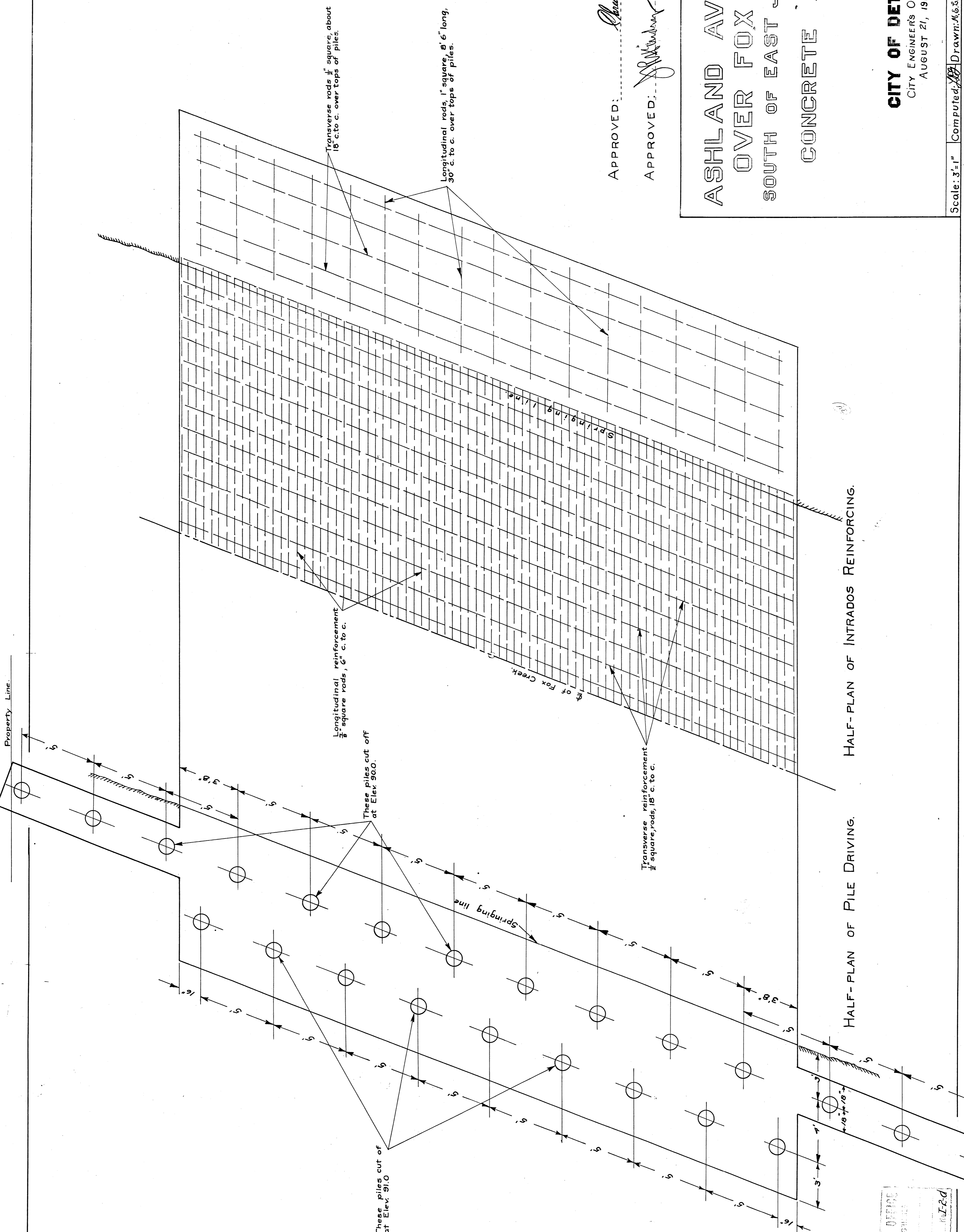
**ASHLAND AVE. BRIDGE
OVER FOX CREEK
SOUTH OF EAST JEFFERSON
CONCRETE ARCH**

CITY OF DETROIT
CITY ENGINEERS OFFICE.
AUGUST 21, 1917.

Scale: 3"=1' | Computed: *...* | Drawn: *...* | Checked: *...* | Traced: *...*

CITY ENGINEERS OFFICE
13 J-2c

A-13 17-3
File BW 245-7
DW 245
4/6



APPROVED: *Samuel S. Hubbell*
City Engineer.

APPROVED: *W. W. Johnson*
Asst. Engineer.

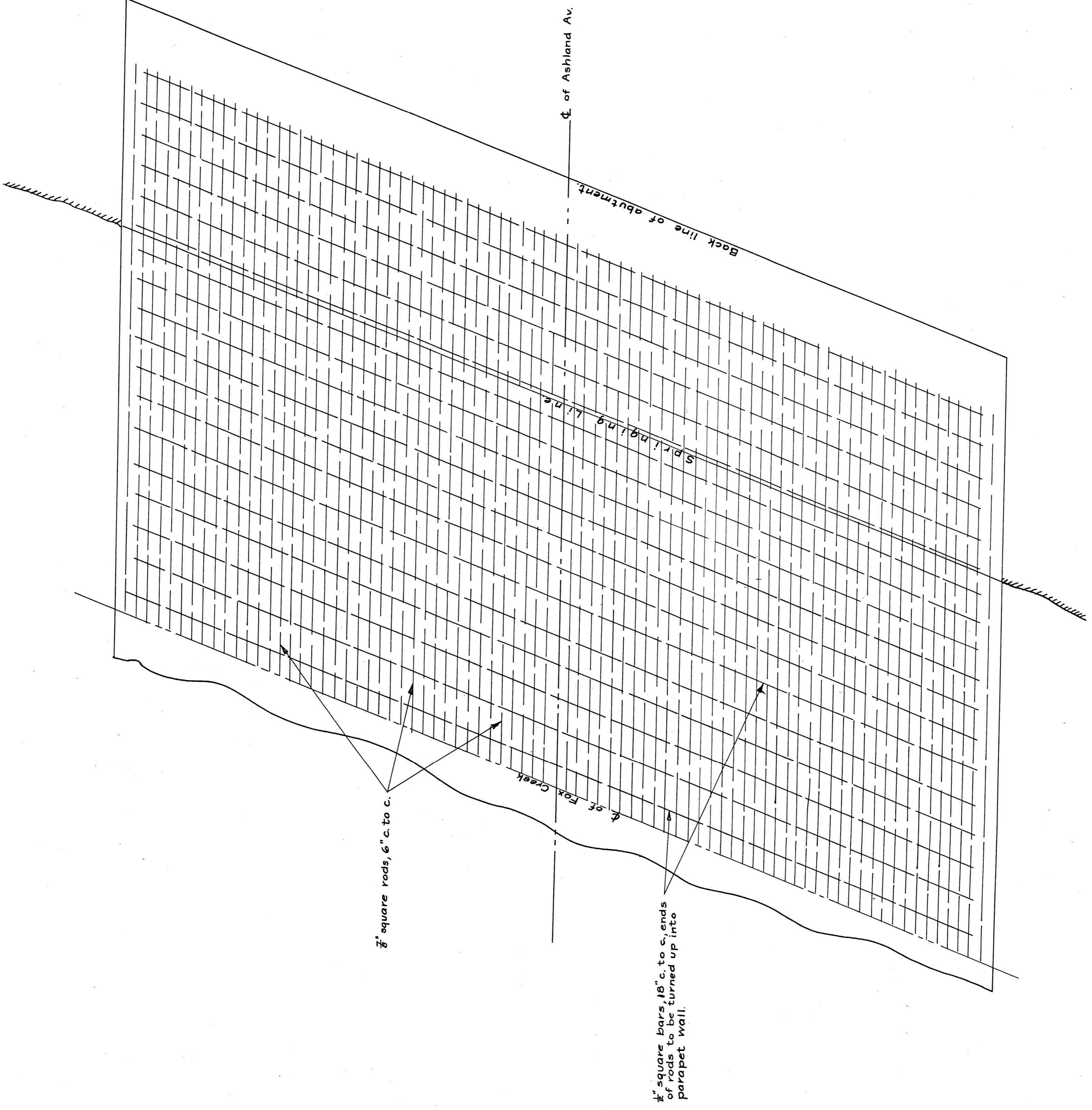
**ASHLAND AVE. BRIDGE
OVER FOX CREEK
SOUTH OF EAST JEFFERSON
CONCRETE ARCH**

CITY OF DETROIT
CITY ENGINEERS OFFICE
AUGUST 21, 1917

Scale: 3/4" = 1' Computed: *W. W. Johnson* Drawn: *M. S. S.* Checked: *W. W. Johnson* Traced: *H. H. C.*

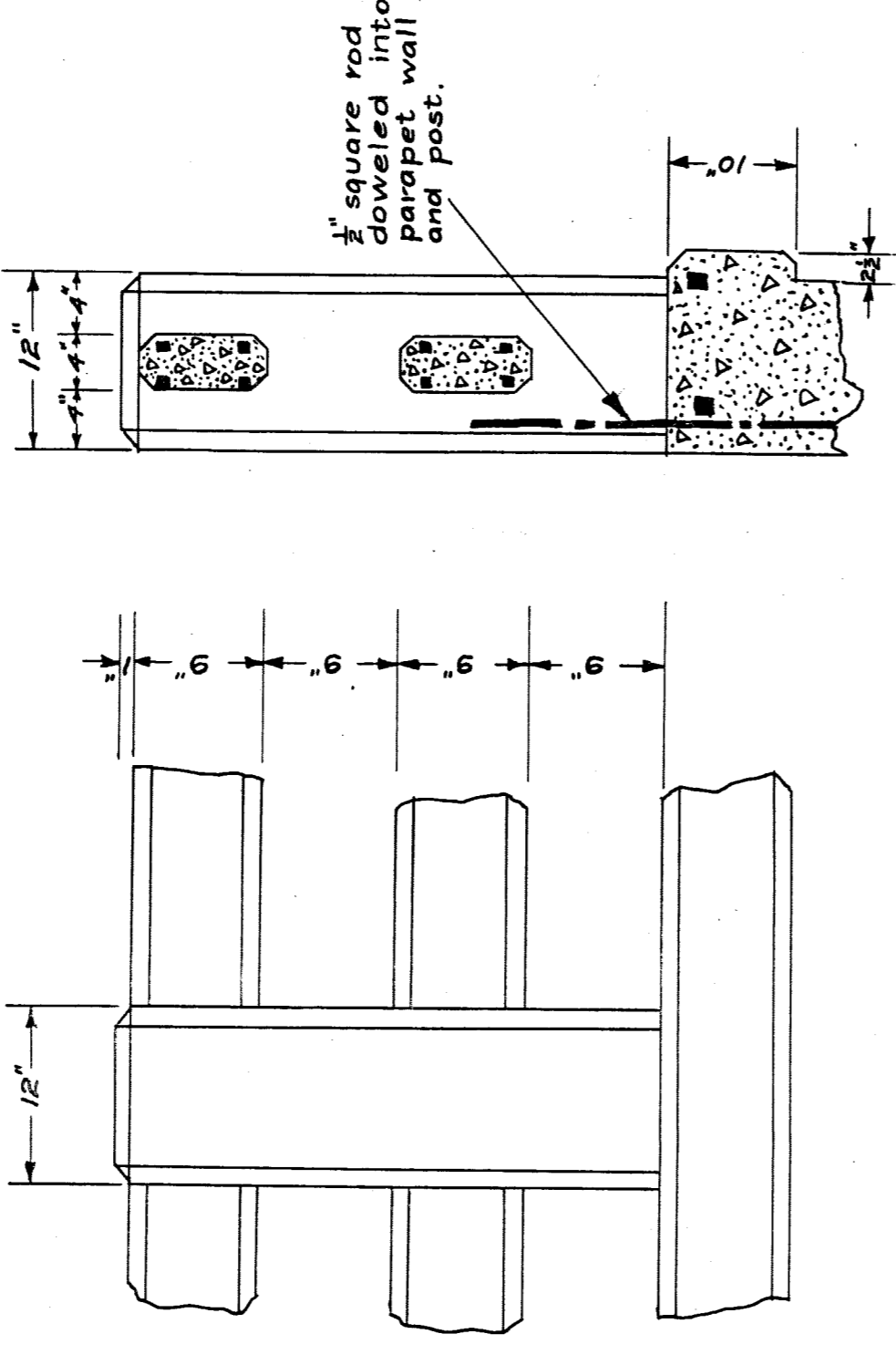
CITY ENGINEERS OFFICE
CIVIL ENGINEERING
CITY OF DETROIT
Case: A Sheet: 13 H.J.B.

File BW 245-8
5/10
II-4



HALF-PLAN OF EXTRADOS REINFORCEMENT.

Scale 3"=1'



DETAIL OF HAND RAIL

Scale 1"=1'

APPROVED: *Charles H. Haskell* City Engineer.

APPROVED: *W. W. Anderson* Asst. Engineer.

ASHLAND AVE. BRIDGE
OVER FOX CREEK
SOUTH OF EAST JEFFERSON
CONCRETE ARCH

CITY OF DETROIT
CITY ENGINEERS OFFICE
AUGUST 21, 1917

Scale: As Shown Computed: *W. W. Anderson* Drawn: *W. W. Anderson* Checked: *W. W. Anderson* Traced: *W. W. Anderson*

A-13 II-5

CITY ENGINEERS OFFICE
CITY OF DETROIT
GEN. A. DRAWING 13