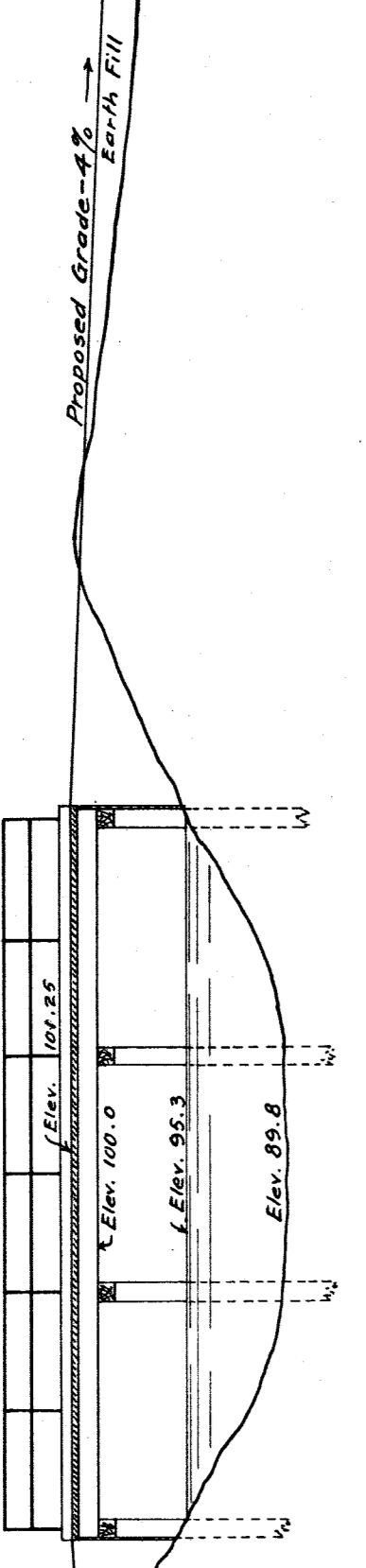
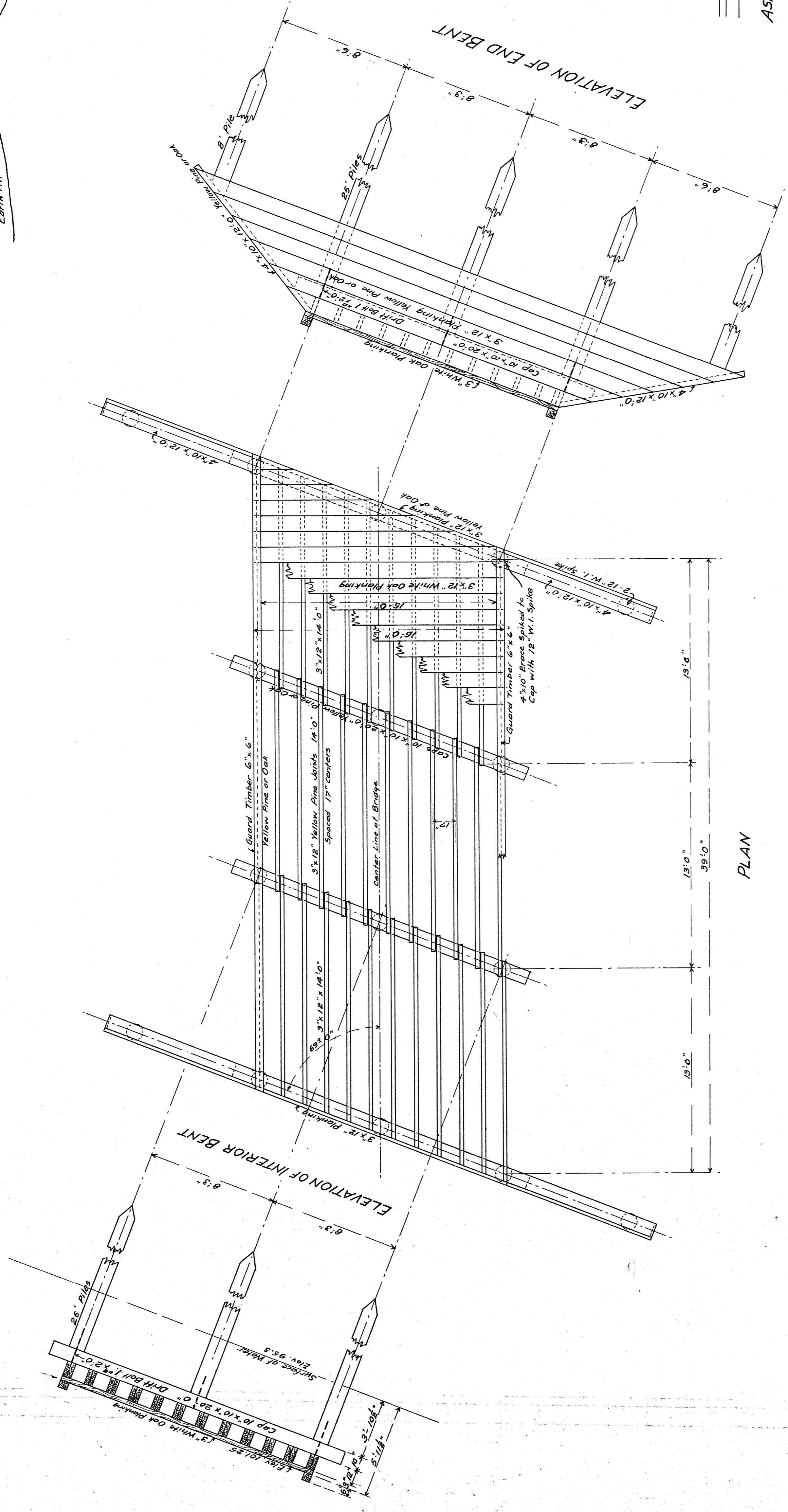


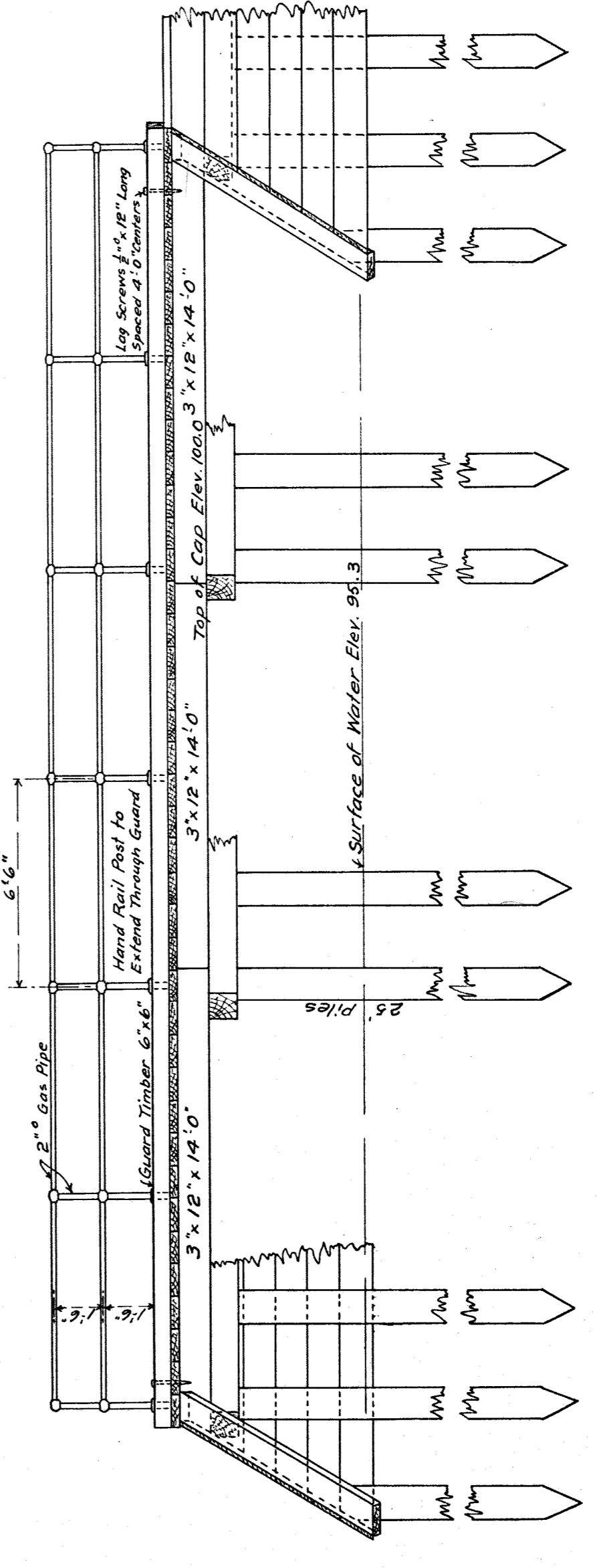
To Jefferson Ave. 400 Ft. →



PROFILE OF BRIDGE
Scale: 1 in. = 10 ft.



PLAN



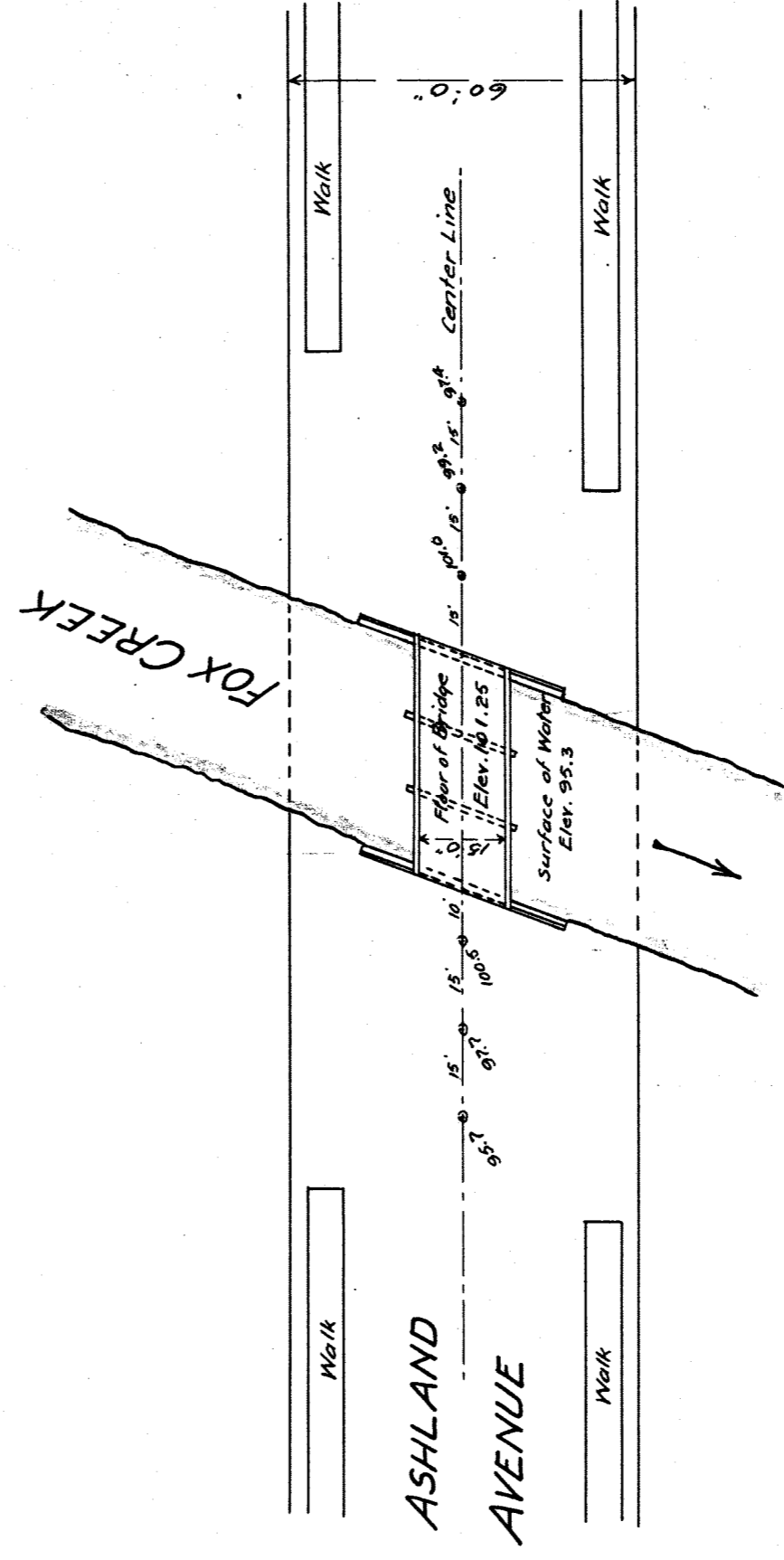
ELEVATION

Bill of Timber

Bulkhead	3x12	1080	ft.	B.M.
Flanking	3x12	1920	"	"
Stringers	3x12	1512	"	"
Whisks	3x12	240	"	"
Braces	4x10	160	"	"
Caps	10x10	660	"	"
Piles	12	25 ft. Long	"	"
	4	8	"	"

Bill of Iron

198	Lin. Ft.	2" Gas Pipe
12	Flanges	
10	Crosses	
14	Tees	
4	Angles	
12	Drift Bolts	1 1/2" x 2 1/2"
22	Log Screws	1 1/2" x 1 1/2"
24	W.I. Spikes	3/4" x 12"
24	W.I. Spikes	3/4" x 12"
56	Mood Screws	3" Long



PLAN SHOWING LOCATION OF BRIDGE
Scale: 1 in. = 30 ft.

PLAN OF
PROPOSED WOODEN BRIDGE 39'-0" LONG
OVER FOX CREEK

ON ASHLAND AVENUE SOUTH OF JEFFERSON AVE.

Scale 1/4 in. = 1 ft. Except Where Noted
CITY ENGINEER'S OFFICE DETROIT, MICHIGAN.
May 29, 1909.
B. 154 P. 59

11/3/14 U.A.S.

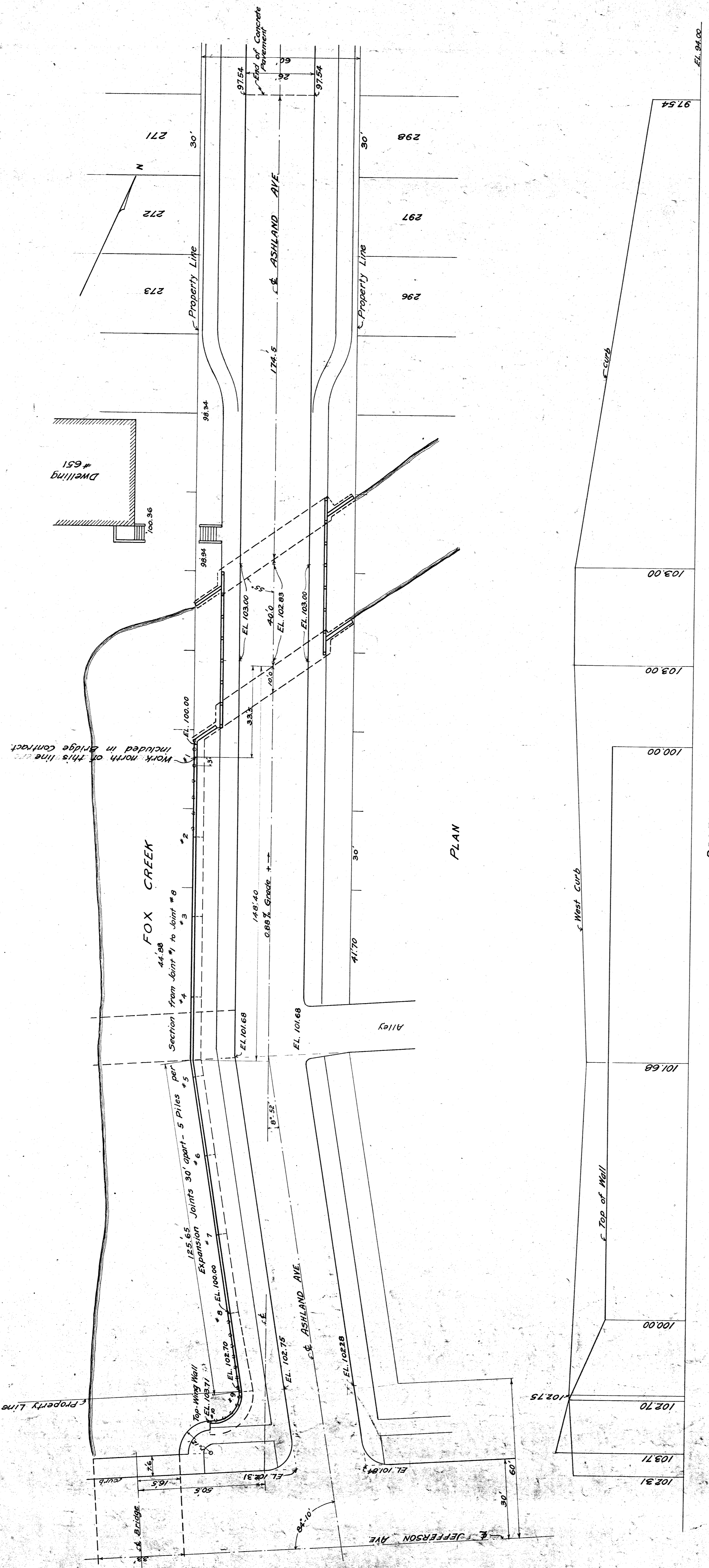
File BW 245-1

CITY ENGINEER'S OFFICE
DETROIT, MICHIGAN
1221
13

CITY OF DETROIT
DEPARTMENT OF PUBLIC WORKS
 OFFICE OF CITY ENGINEER
 DIVISION OF GRADE SEPARATION AND BRIDGES

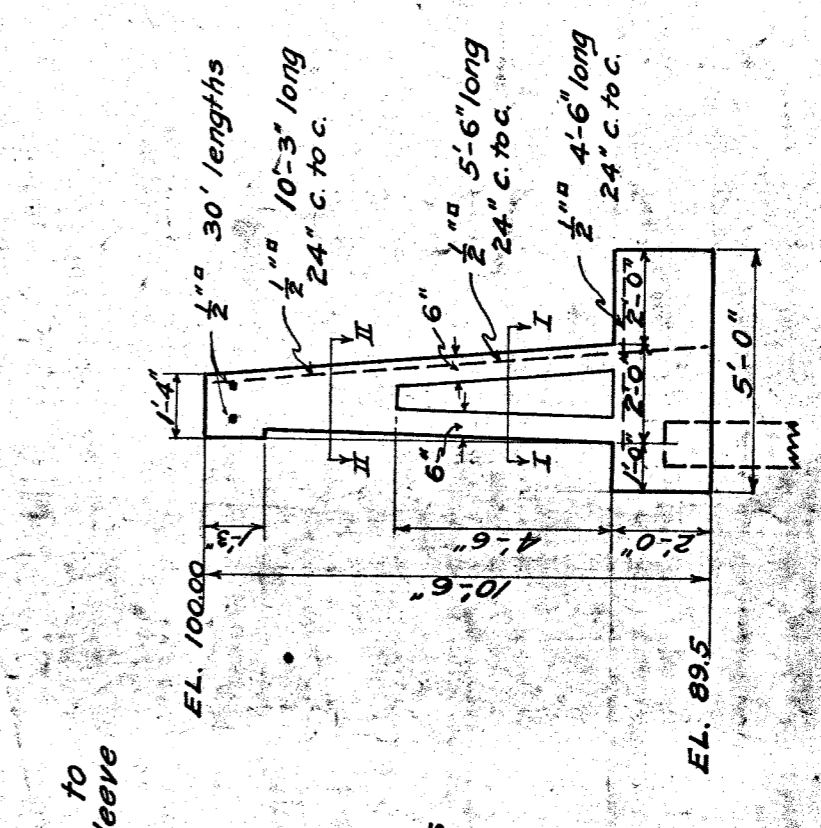
LOCATION MAP
RETAINING WALL ALONG FOX CREEK
ON ASHLAND AVE.
NORTH OF JEFFERSON AVE.

SCALE: 1" = 20'
 1918
 B.M. 245-2

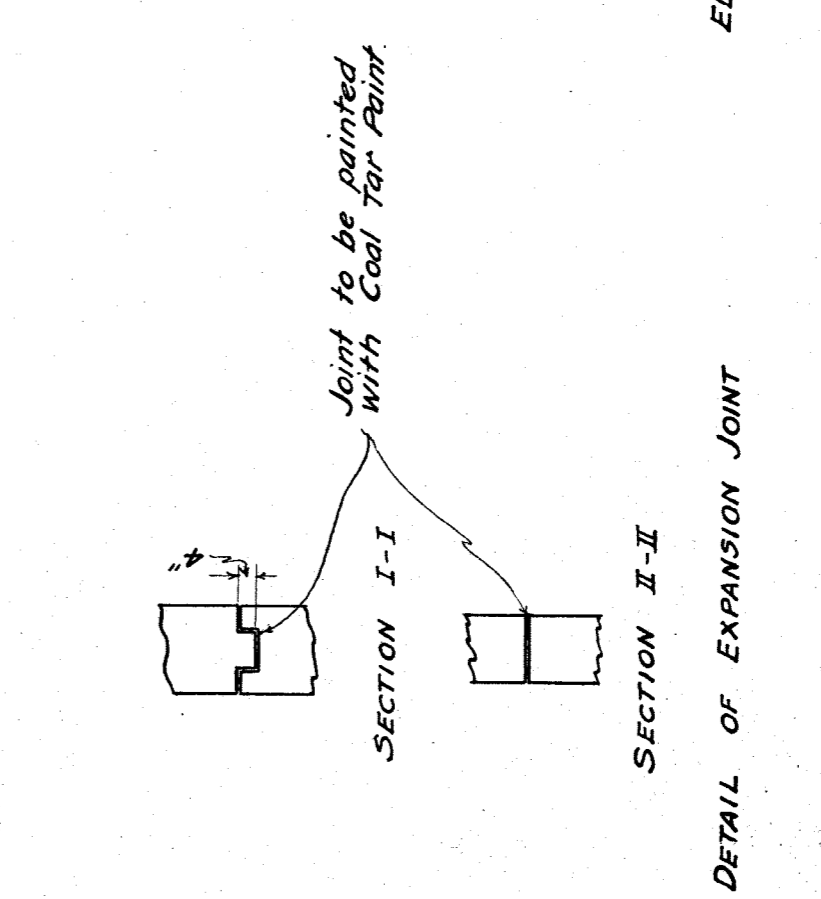


PROFILE

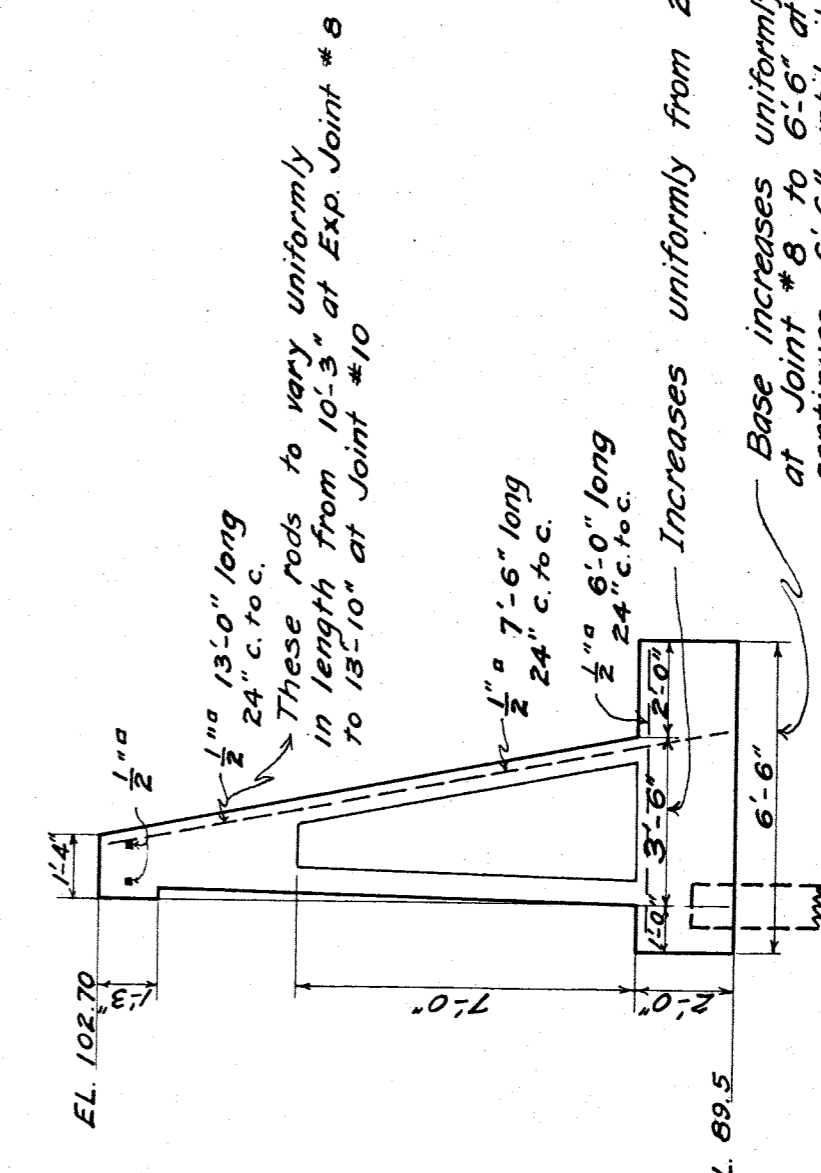
Hand rail to extend full length of wall
 1/2" Gas Pipe Plain Fittings
 Posts 10' c.c.
 Horizontal, nuts reamed to
 sliding sleeve
 provided 50' c.c.
 5/16" anchor bolts
 in wall
 when concrete is
 poured.



SECTION A-A



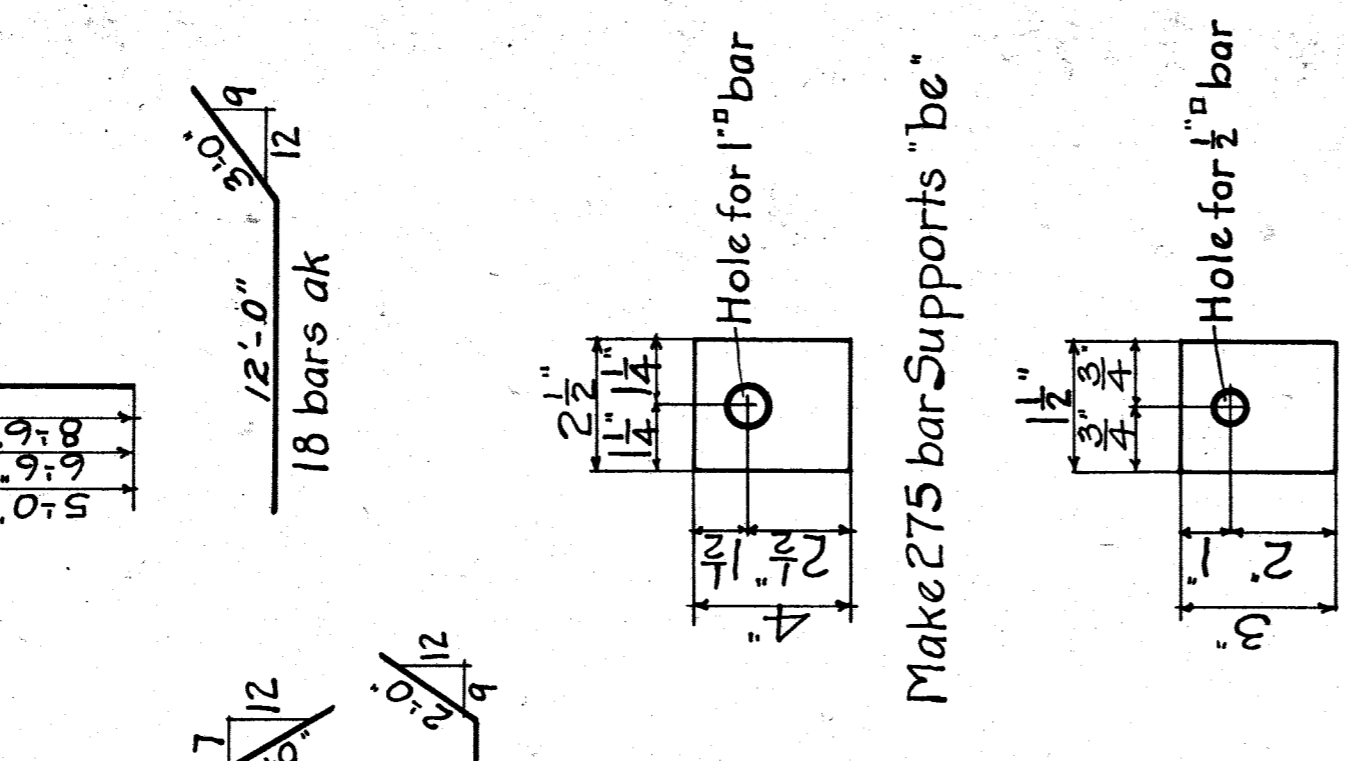
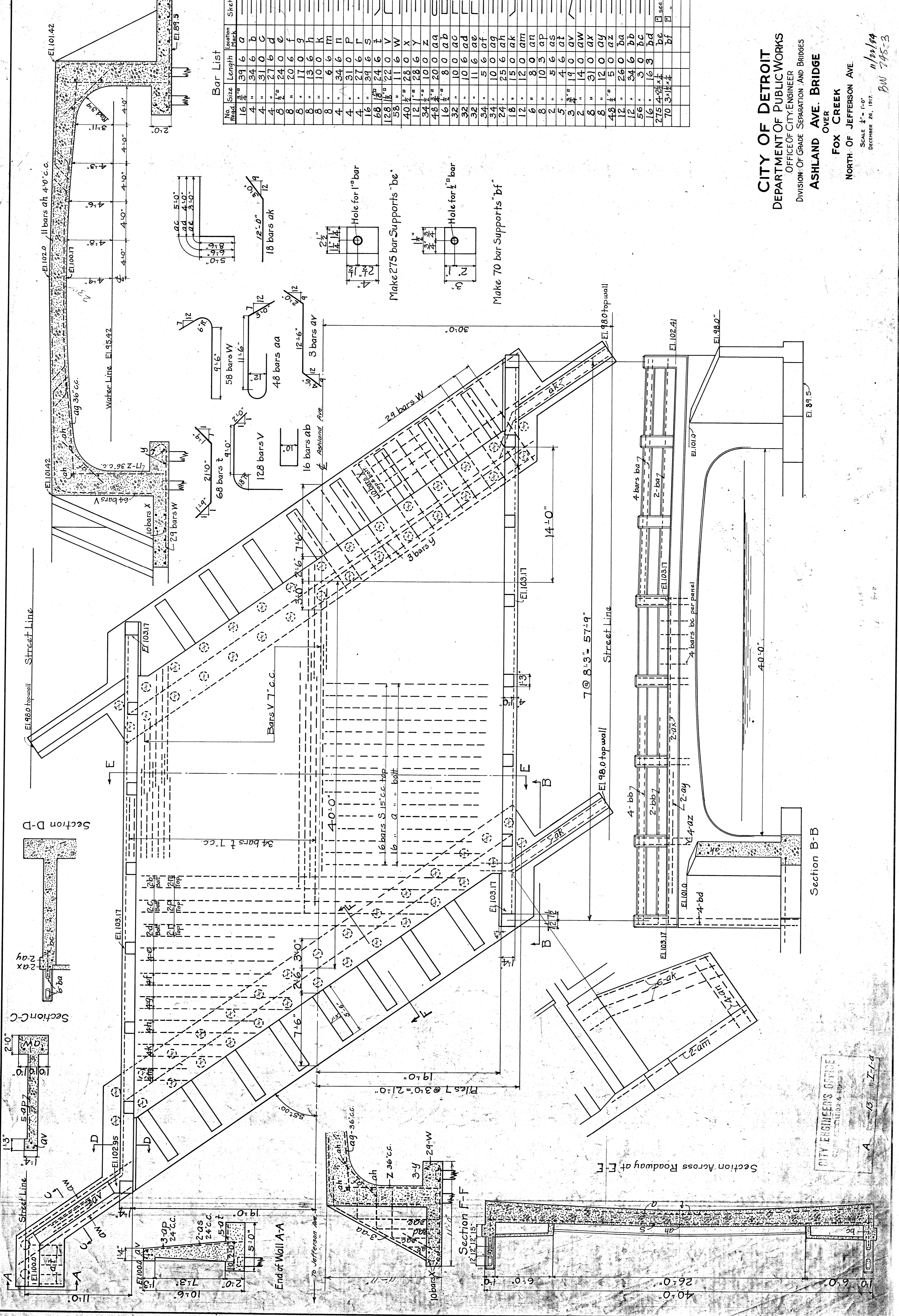
DETAIL OF EXPANSION JOINT



SECTION OF WALL At Exp. Joint #9

Note: Specifications for Ashland Ave. Bridge, North of Jefferson to be followed for material and workmanship for Concrete Wall.
 Wall to be poured in alternate sections
 Bench Mark: N.E. Corner Jefferson & Alter Road on top of stone EL. 102.172 brick column EL. 102.172 (see grade separation Book #12-P.39)

No.	Size	Length	Location	Sketch
16	3/4"	39	a	
4	"	34	b	
4	"	31	c	
4	"	27	d	
8	1/2"	24	e	
8	"	20	f	
8	"	17	g	
8	"	13	h	
8	"	10	i	
8	"	6	j	
4	"	34	k	
4	"	31	l	
4	"	27	m	
16	1/2"	34	n	
16	1/2"	24	o	
128	1/2"	22	p	
58	"	11	q	
40	1/2"	28	r	
12	1/2"	10	s	
34	1/2"	10	t	
48	1/2"	20	u	
16	1/2"	8	v	
32	"	10	w	
32	"	10	x	
34	"	5	y	
34	"	10	z	
24	"	25	aa	
18	"	15	ab	
12	"	12	ac	
6	"	8	ad	
8	"	10	ae	
2	"	5	af	
5	"	19	ag	
3	"	4	ah	
2	"	14	ai	
8	"	31	aj	
8	"	12	ak	
48	1/2"	5	al	
12	"	26	am	
12	"	26	an	
56	"	3	ao	
16	"	3	ap	
275	1/2"	4	aq	
70	3/4"	4	ar	



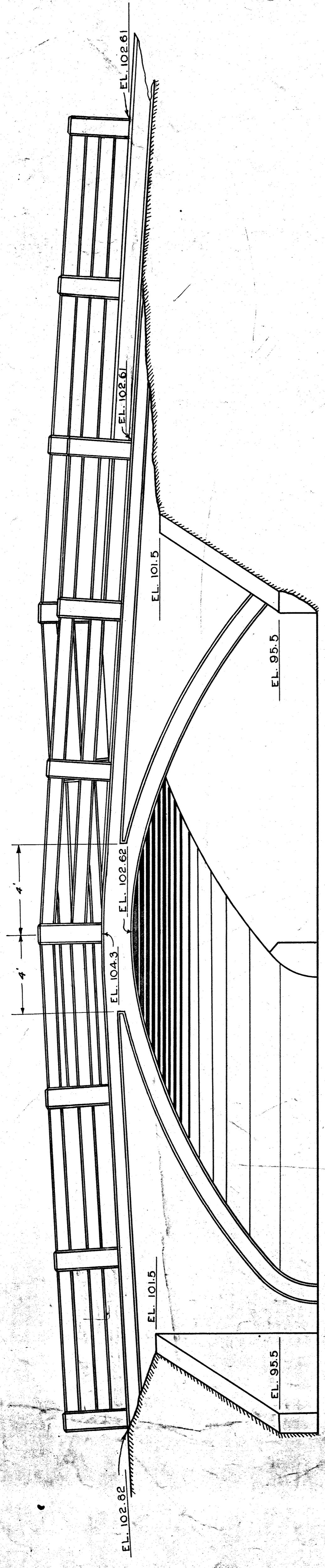
CITY OF DETROIT
 DEPARTMENT OF PUBLIC WORKS
 OFFICE OF CITY ENGINEER
 DIVISION OF GRADE SEPARATION AND BRIDGES

ASHLAND AVE. BRIDGE
 OVER
 FOX CREEK

NORTH OF JEFFERSON AVE.
 SCALE 1/2" = 1'-0"
 DECEMBER 26, 1917.

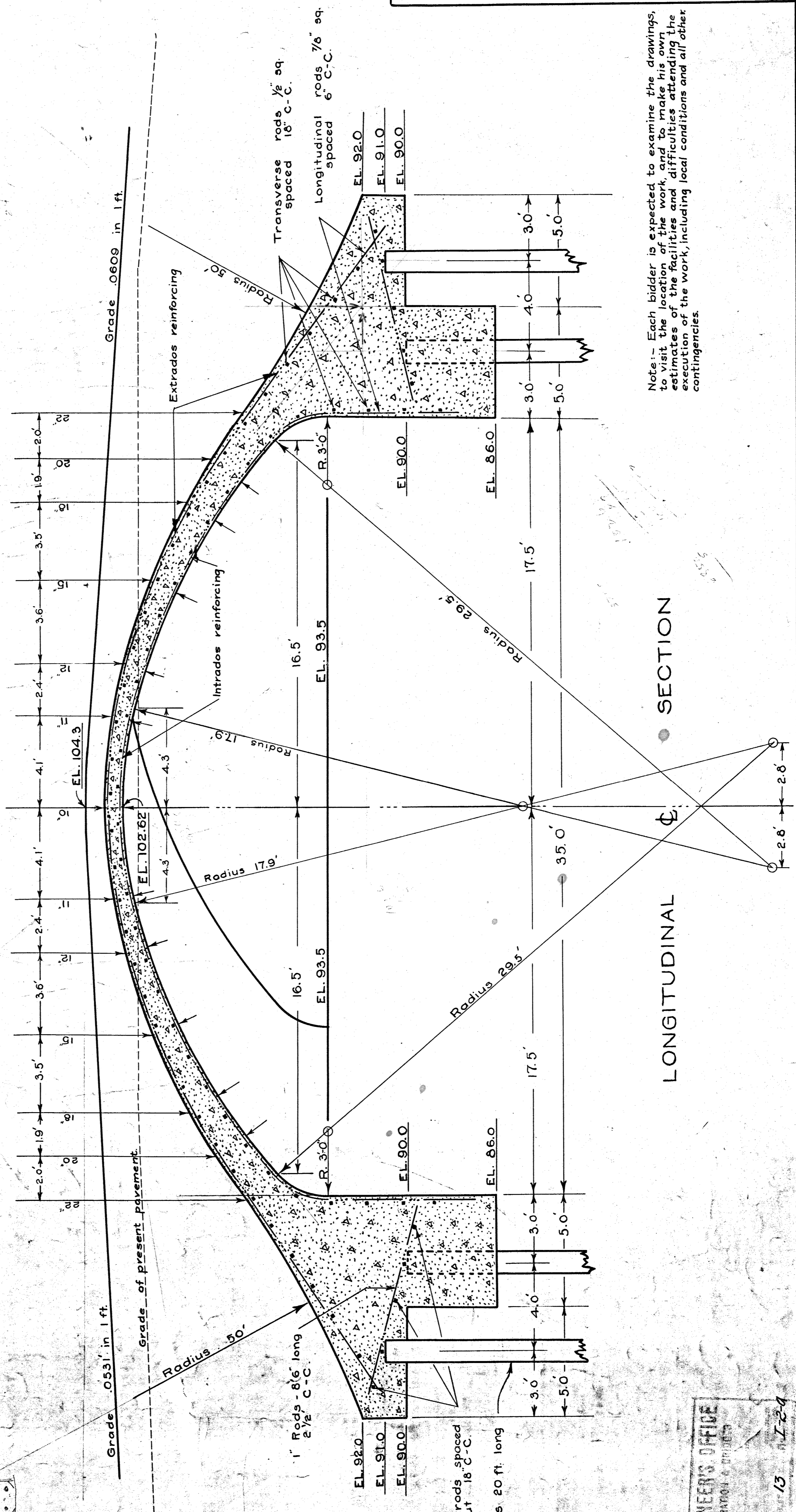
11/22/19
 BW 745-3

CITY ENGINEERS OFFICE
 GRADY, GILBERT & APPLESBY



ELEVATION

Note: All pavements, sidewalks, and such portion of fill as is not obtained from excavations made in course of bridge construction, will be made by the City of Detroit.



SECTION

LONGITUDINAL

Note: - Each bidder is expected to examine the drawings, to visit the location of the work, and to make his own estimate of the quantities of work, including local conditions and all other contingencies.

APPROVED: *Alvin H. Kell*
City Engineer.

APPROVED: *W. H. ...*
Asst. Engineer.

**ASHLAND AVE. BRIDGE
OVER FOX CREEK
SOUTH OF EAST JEFFERSON
CONCRETE ARCH**

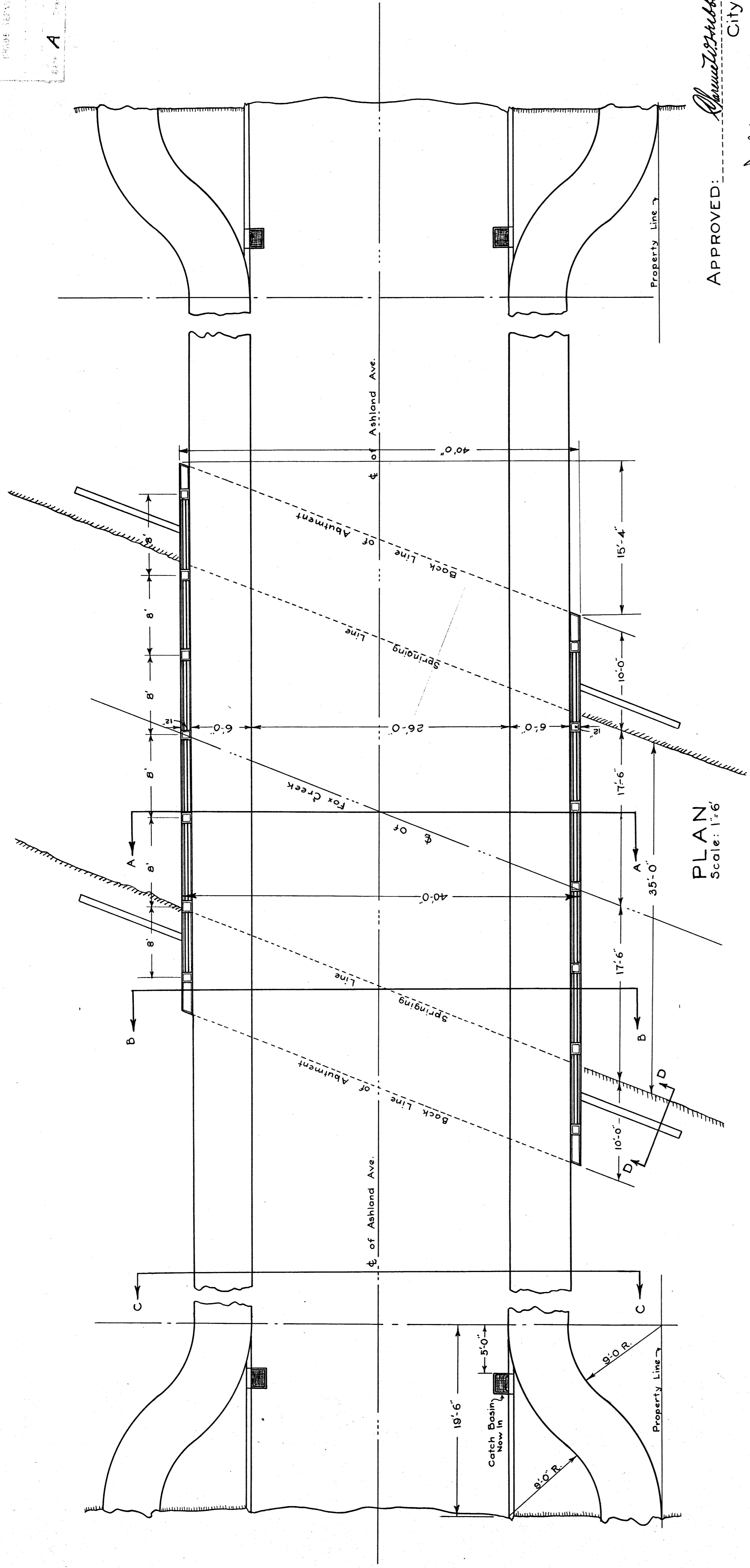
CITY ENGINEERS OFFICE
GRADE SEPARATION & BRIDGES
A 13 11-24

CITY OF DETROIT
CITY ENGINEERS OFFICE
AUGUST 21, 1917.

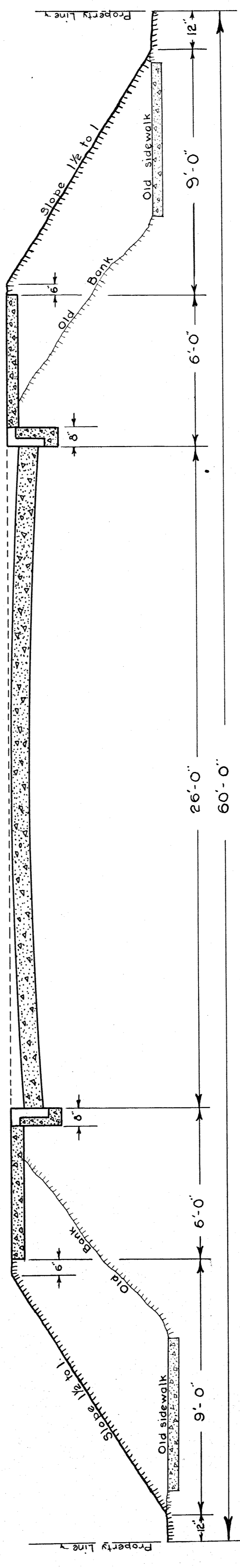
Scale: 1" = 3' Computed, Drawn, Checked, Traced.

File BW 245-5 11/13/17

CITY ENGINEER'S OFFICE
 ENGINE DRAWINGS & BRIDGES
 A 13 I-26



PLAN
 Scale: 1"=6'



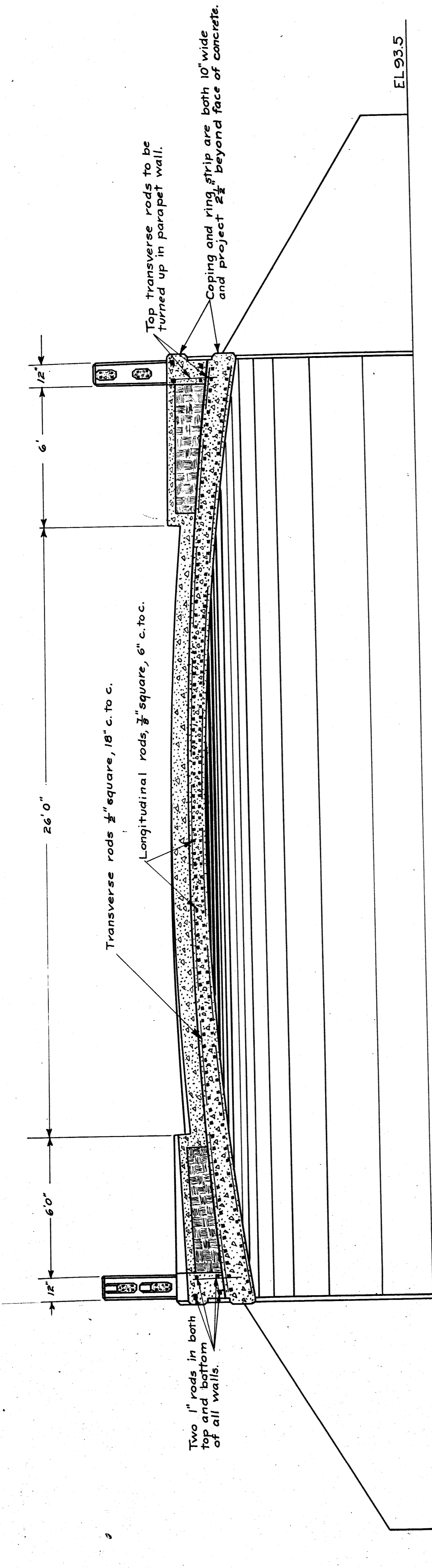
SECTION C-C
 Scale: 1"=3'

APPROVED: *Almont* City Engineer.
 APPROVED: *W. H. ...* Asst Engineer.

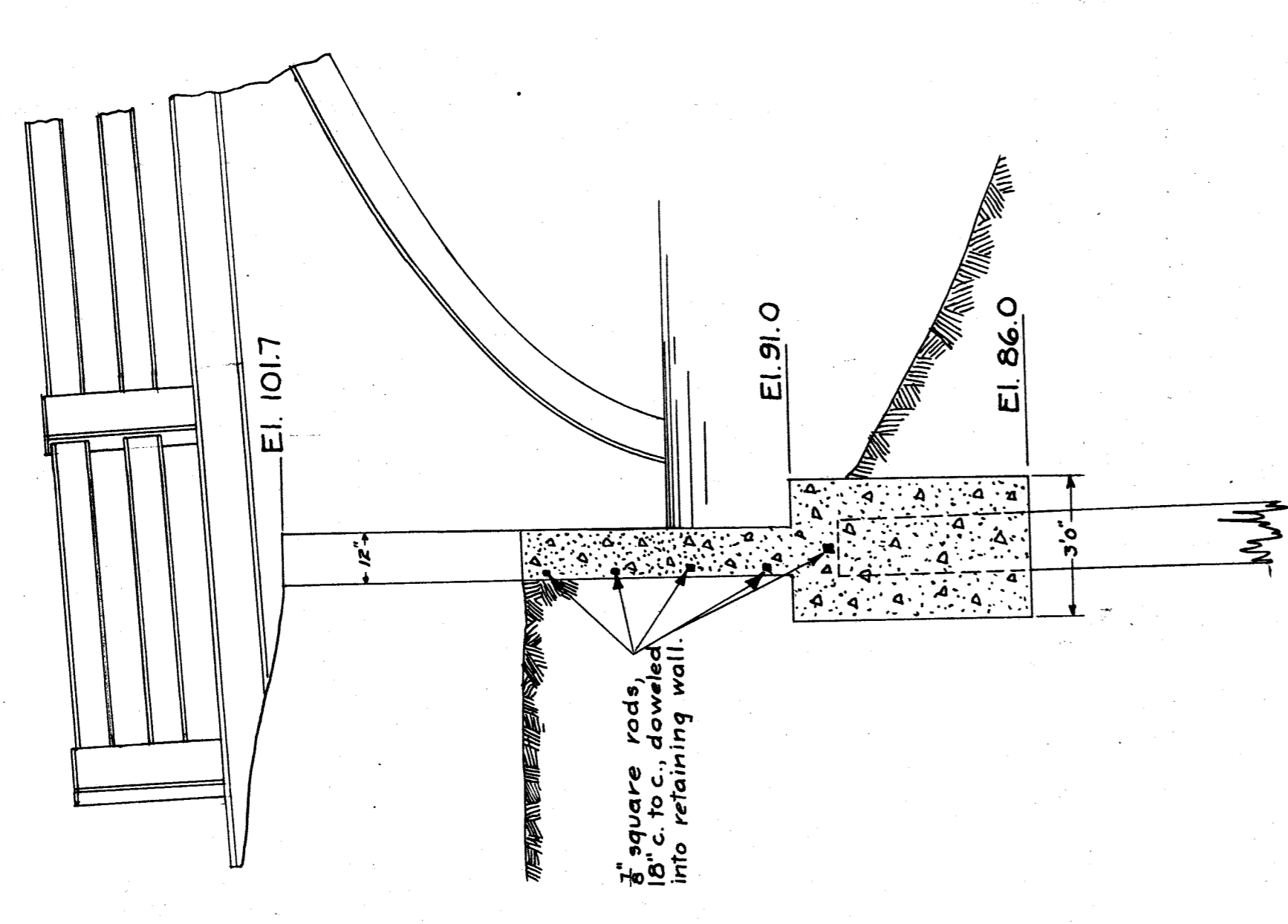
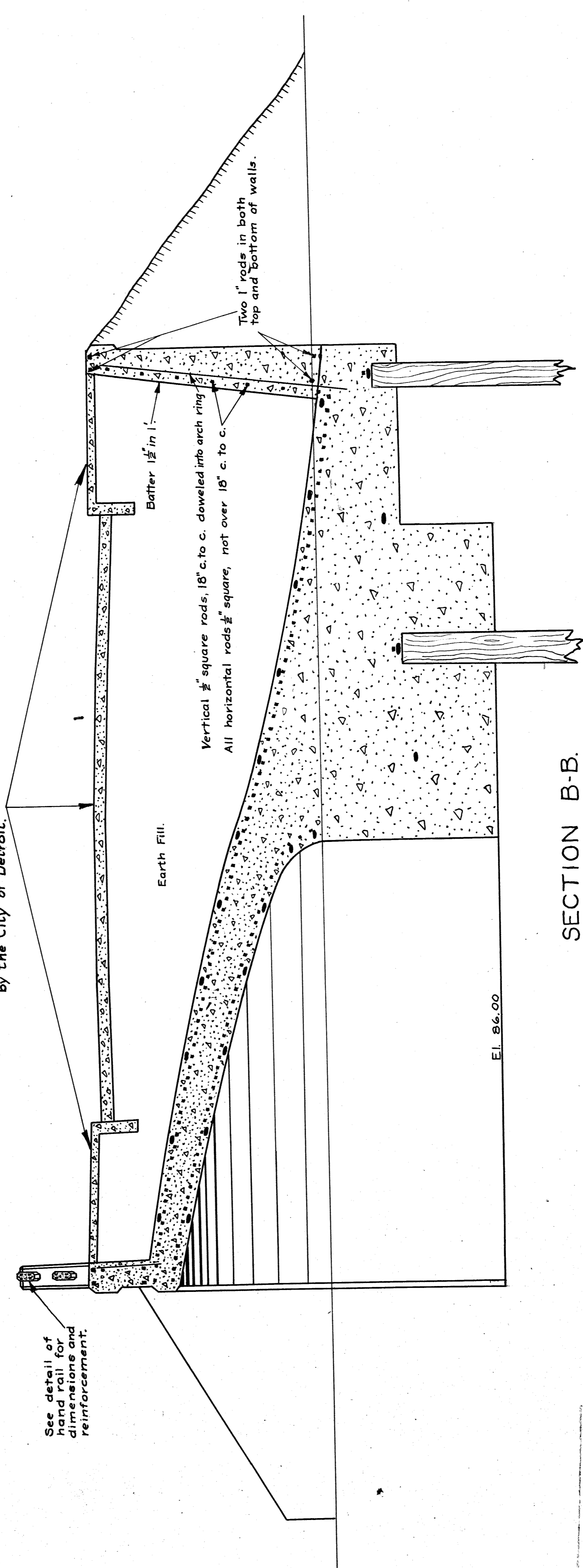
**ASHLAND AVE. BRIDGE
 OVER FOX CREEK
 SOUTH OF EAST JEFFERSON
 CONCRETE ARCH**

CITY OF DETROIT
 CITY ENGINEER'S OFFICE
 AUGUST 21, 1917.

Scale: As Shown Computed *AB* Drawn *MS&S* Checked *MS&S* Traced *MS&S*
 A-13 II-2 11/21/94
 File BW 245-6



Note: Pavement and sidewalk to be built by the City of Detroit.



APPROVED: *Samuel H. Harkell* City Engineer

APPROVED: *W. H. Anderson* Asst. Engineer

**ASHLAND AVE. BRIDGE
OVER FOX CREEK
SOUTH OF EAST JEFFERSON
CONCRETE ARCH**

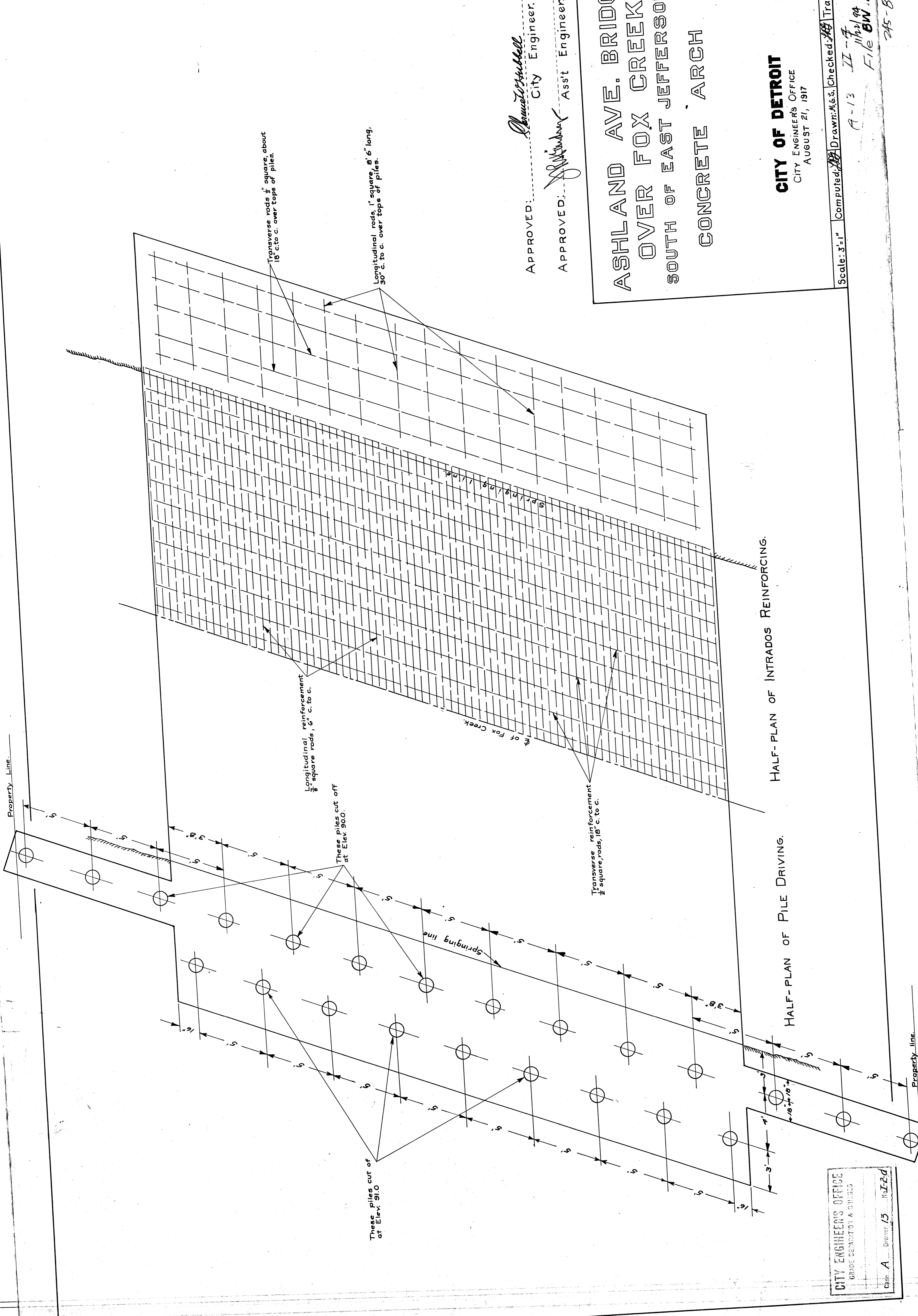
CITY OF DETROIT
CITY ENGINEERS OFFICE
AUGUST 21, 1917.

Scale: 3/4" = 1" Computed: *W. H. Anderson* Drawn: *W. H. Anderson* Checked: *W. H. Anderson* Traced: *W. H. Anderson*

A-13 II-3 11/11/44 File BW 2457

CITY ENGINEERS OFFICE
GRADE SURVEYING & BUILDING

Case A Drawn: 13 I-2-c



APPROVED: *Samuel S. Hubbell*
City Engineer.

APPROVED: *W. W. Hubbard*
Asst. Engineer.

**ASHLAND AVE. BRIDGE
OVER FOX CREEK
SOUTH OF EAST JEFFERSON
CONCRETE ARCH**

CITY OF DETROIT
CITY ENGINEERS OFFICE
AUGUST 21, 1917

Scale: 3"=1' Computed: *[initials]* Drawn: *M.S.* Checked: *[initials]* Traced: *[initials]*

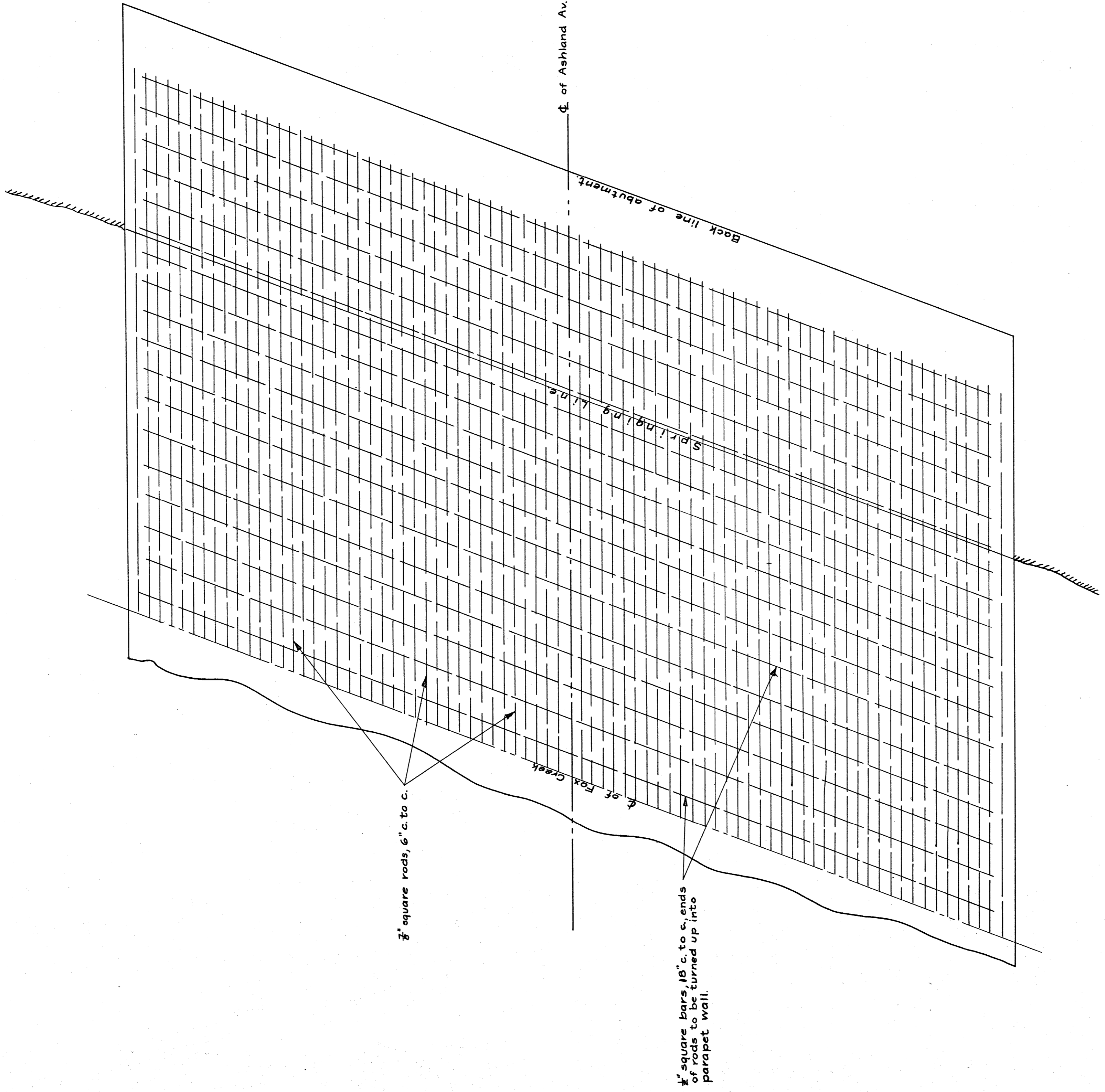
A-13 II-7 File **BW 24** 245-8

HALF-PLAN OF INTRADOS REINFORCING.

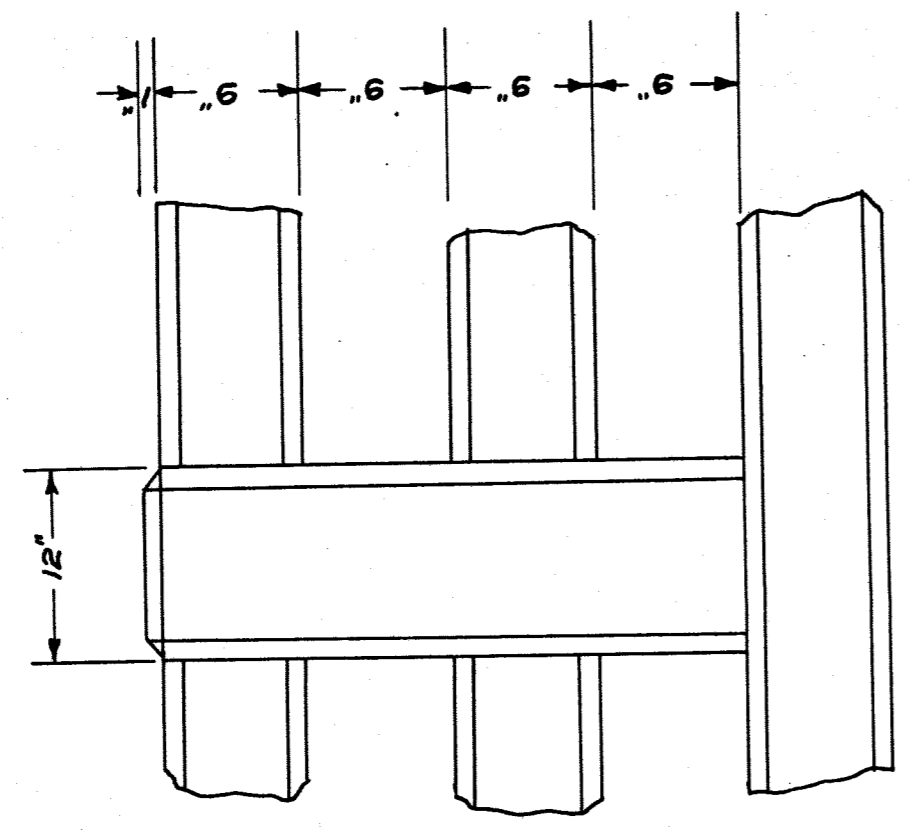
HALF-PLAN OF PILE DRIVING.

CITY ENGINEERS OFFICE
GRADE SURVEYING & STUDIES

Case: A Drawer: 15 No: I-2d



HALF-PLAN OF EXTRADOS REINFORCEMENT.
Scale 3"=1"



DETAIL OF HAND RAIL
Scale 1"=1'

1/2" square rod into doweled wall and past.

1/2" square bars 18" c. to c., ends of rods to be turned up into parapet wall.

1/2" square rods, 6" c. to c.

APPROVED: *Charles H. Hubbell* City Engineer
APPROVED: *W. H. ...* Asst. Engineer

ASHLAND AVE. BRIDGE
OVER FOX CREEK
SOUTH OF EAST JEFFERSON
CONCRETE ARCH

CITY OF DETROIT
CITY ENGINEERS OFFICE
AUGUST 21, 1917

CITY ENGINEERS OFFICE
BRIDGE DIVISION
Case A
Drawer B
10-128

Scale: As Shown
Computed: *...*
Drawn: *...*
Checked: *...*
Traced: *...*
11/22/1917

A-13 II-5
File BW 245-9