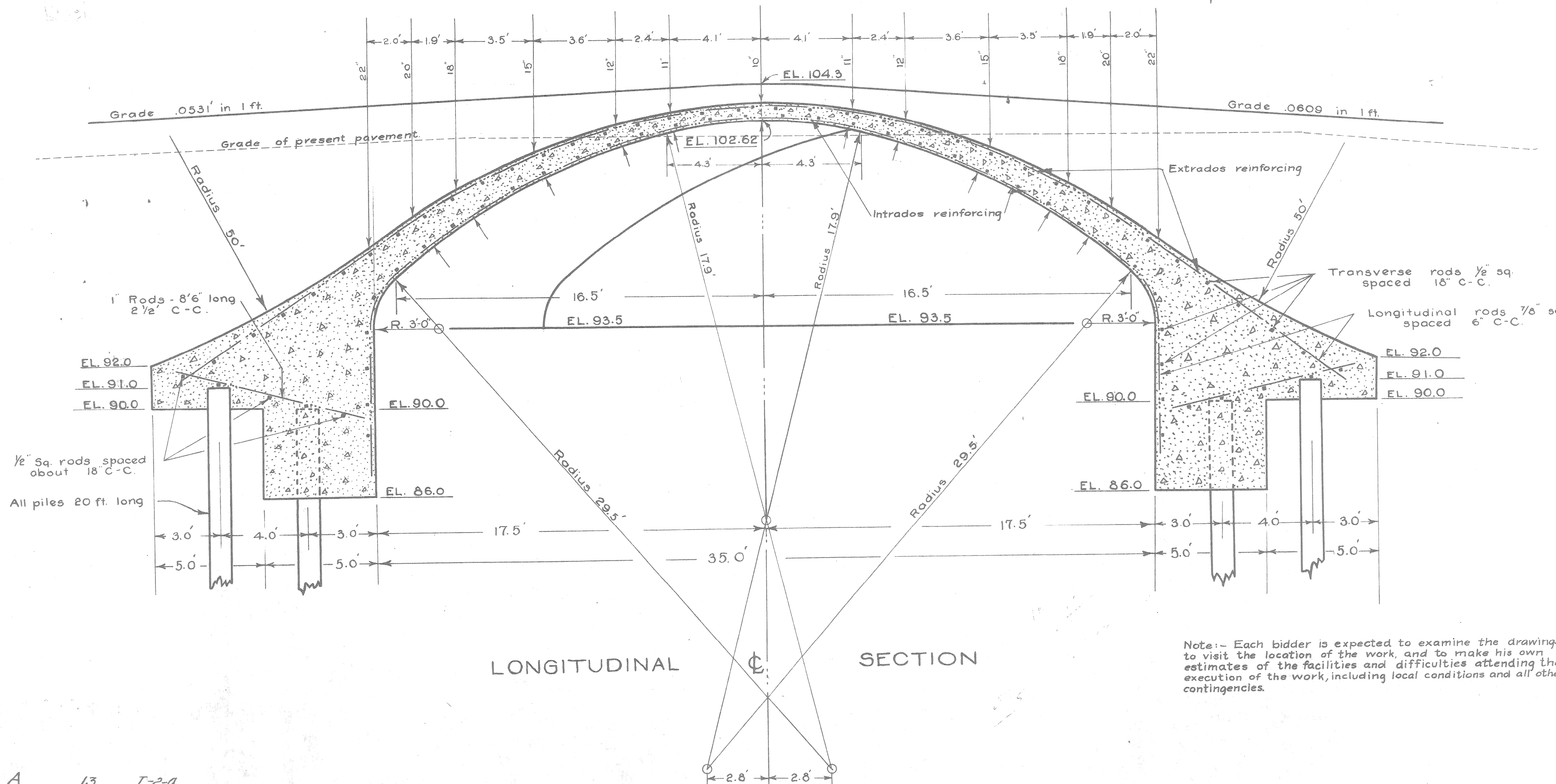


ELEVATION

Note: All pavements, sidewalks, and such portion of fill as is not obtained from excavations made in course of bridge construction, will be made by the City of Detroit.



LONGITUDINAL SECTION

Note: - Each bidder is expected to examine the drawings, to visit the location of the work, and to make his own estimates of the facilities and difficulties attending the execution of the work, including local conditions and all other contingencies.

APPROVED: *Charles W. Hubbell*  
City Engineer  
APPROVED: *J. H. Anderson*  
Asst Engineer

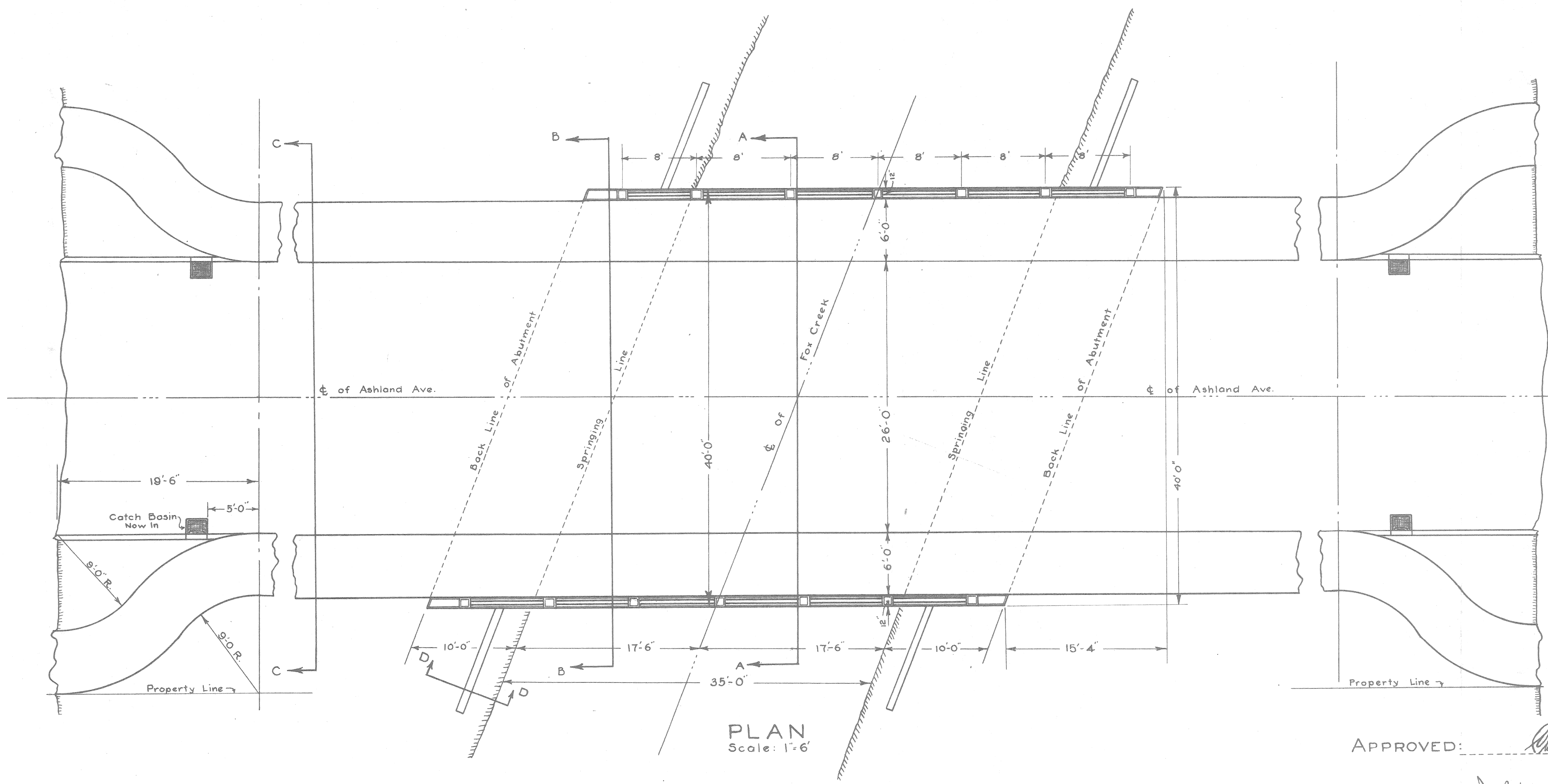
**ASHLAND AVE. BRIDGE  
OVER FOX CREEK  
SOUTH OF EAST JEFFERSON  
CONCRETE ARCH**

**CITY OF DETROIT**  
CITY ENGINEER'S OFFICE  
AUGUST 21, 1917.

Scale: 1"=3' Computed: *W.E.B.* Drawn: *M.E.B.* Checked: *W.E.B.* Traced: *M.E.B.*

File **BW 245-5**

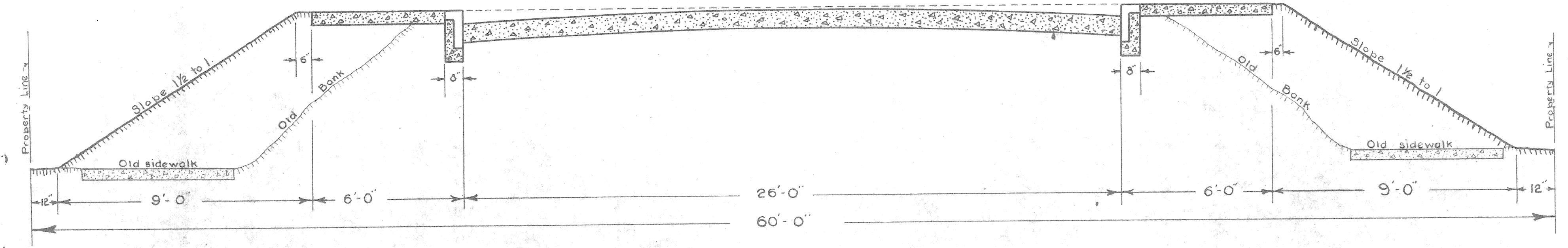
A 13 I-26



PLAN  
Scale: 1" = 6'

APPROVED: *Charles H. Hubbell*  
City Engineer

APPROVED: *J. H. Anderson*  
Ass't Engineer



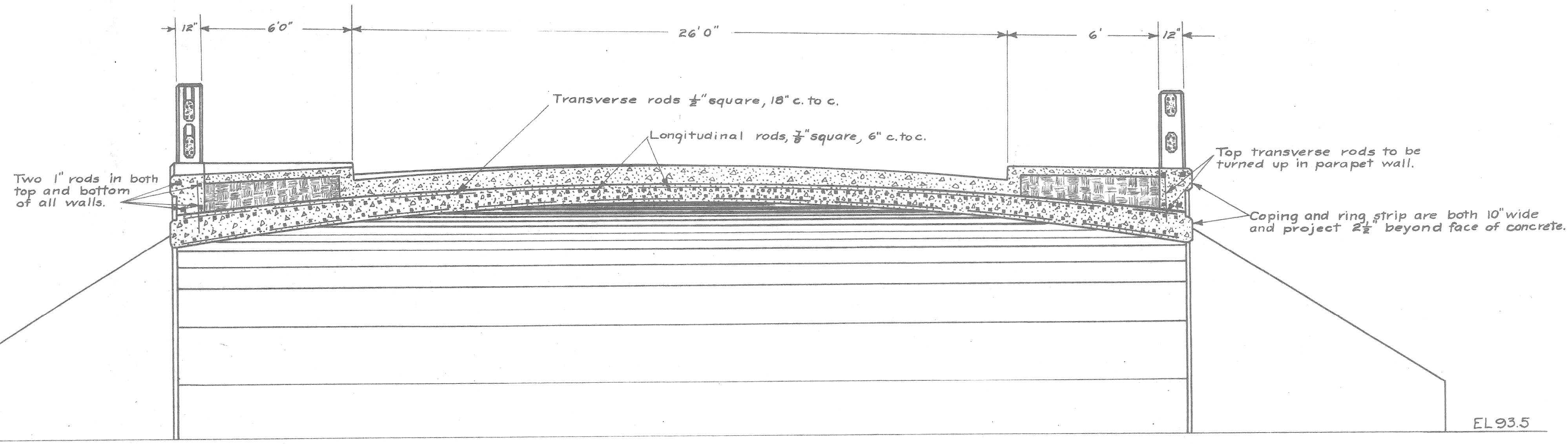
SECTION C-C  
Scale: 1" = 3'

**ASHLAND AVE. BRIDGE  
OVER FOX CREEK  
SOUTH OF EAST JEFFERSON  
CONCRETE ARCH**

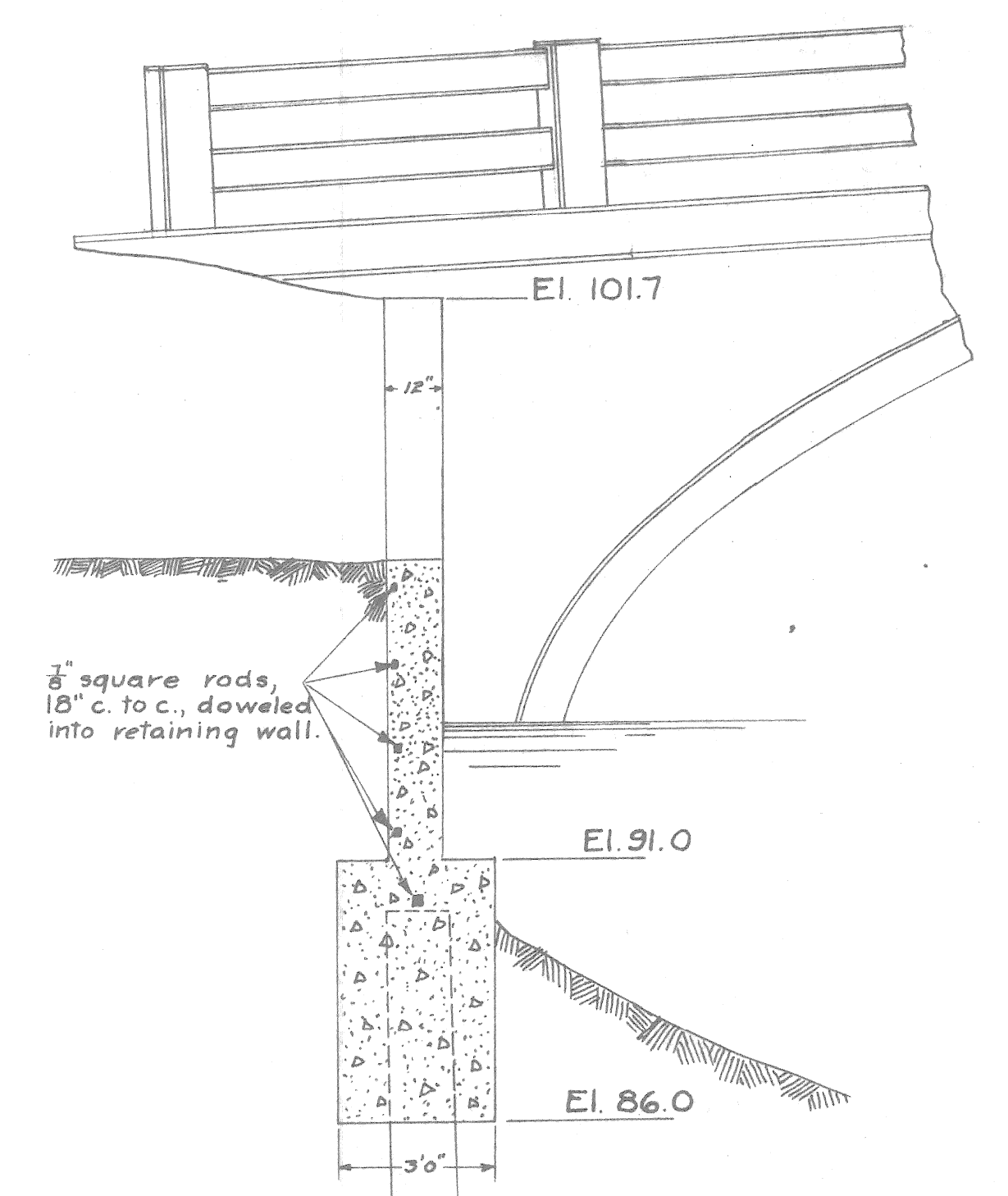
**CITY OF DETROIT**  
CITY ENGINEER'S OFFICE  
AUGUST 21, 1917.

Scale: As Shown Computed *MB* Drawn: *MB* Checked: *MB* Traced: *MB*

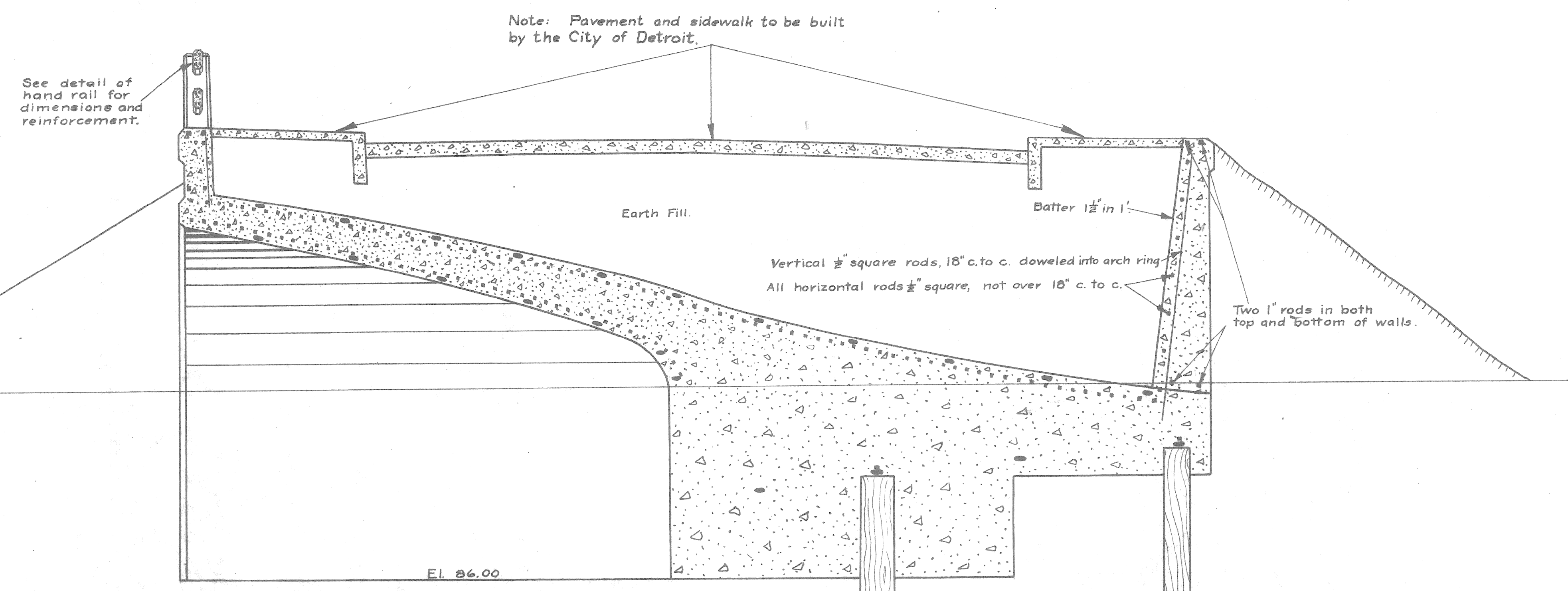
A 13 II-2  
File BW 245-6



SECTION A-A.



SECTION D-D.



SECTION B-B.

APPROVED: *Charles H. Hubbell*  
City Engineer.  
APPROVED: *J. R. Anderson*  
Ass't. Engineer.

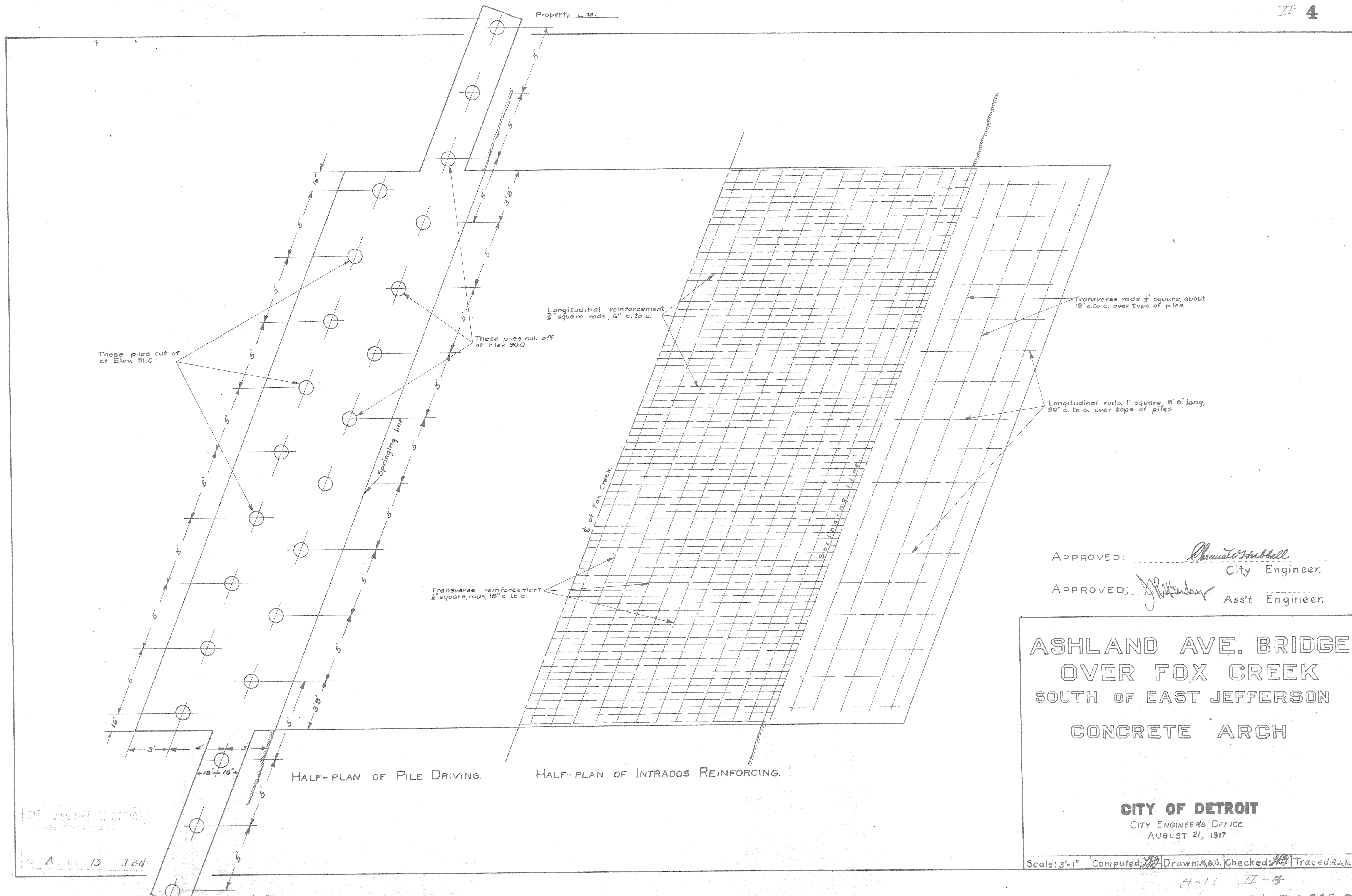
**ASHLAND AVE. BRIDGE  
OVER FOX CREEK  
SOUTH OF EAST JEFFERSON  
CONCRETE ARCH**

**CITY OF DETROIT**  
CITY ENGINEER'S OFFICE.  
AUGUST 21, 1917.

Scale: 3"=1" Computed *MB* Drawn *MB&A* Checked *MB* Traced *MB*

H-13 T-3  
C.L. Box 245-7

A 13 I-2c



These piles cut off at Elev. 91.0

These piles cut off at Elev. 90.0

Longitudinal reinforcement 1/2" square rods, 6" c. to c.

Transverse rods 1/2" square, about 18" c. to c. over tops of piles.

Longitudinal rods, 1" square, 8' 6" long, 30" c. to c. over tops of piles.

Transverse reinforcement 1/2" square rods, 18" c. to c.

APPROVED: *Arnold Stubbell*  
City Engineer.

APPROVED: *J. W. Anderson*  
Ass't Engineer.

**ASHLAND AVE. BRIDGE  
OVER FOX CREEK  
SOUTH OF EAST JEFFERSON  
CONCRETE ARCH**

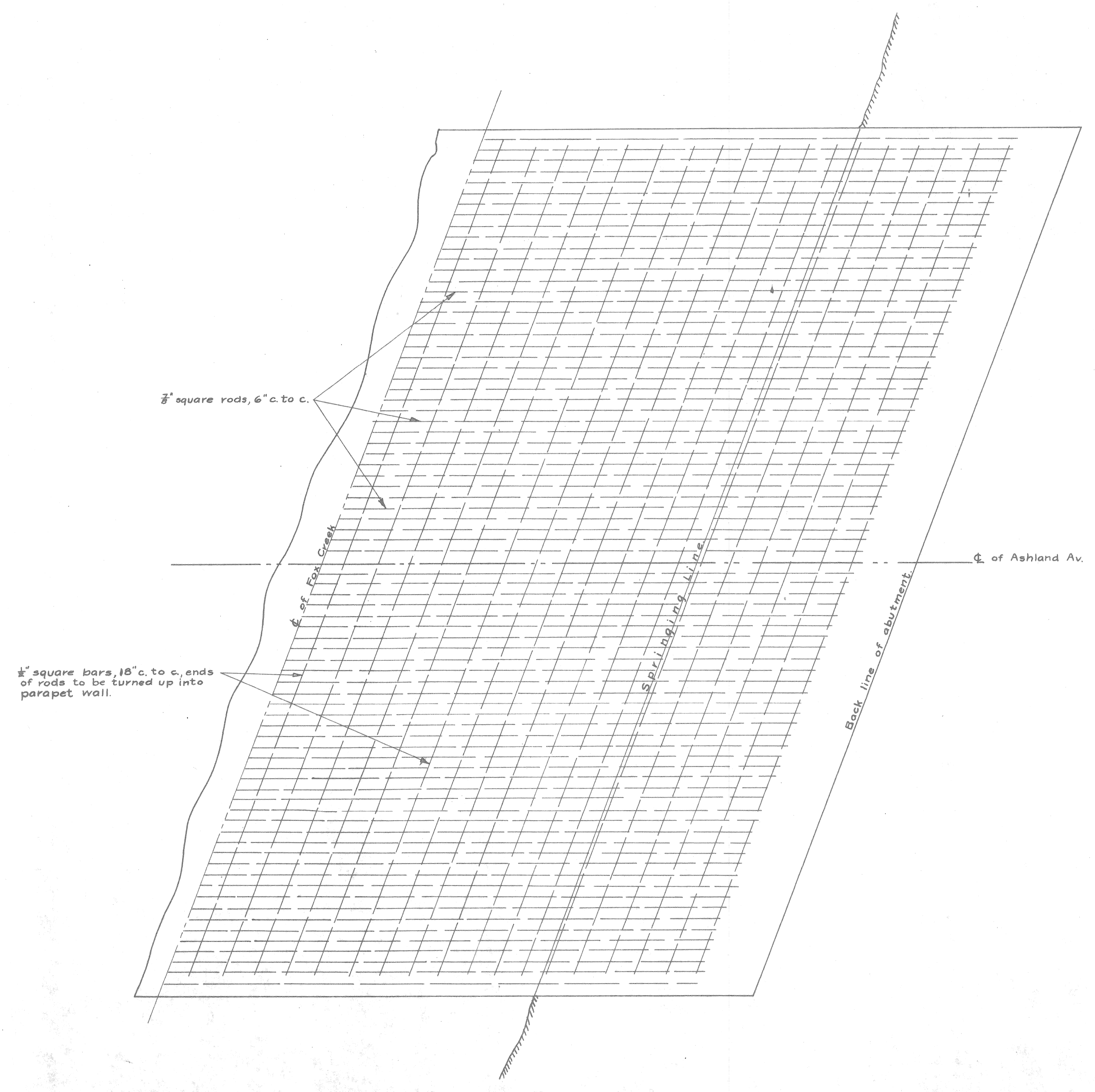
**CITY OF DETROIT**  
CITY ENGINEER'S OFFICE  
AUGUST 21, 1917

Scale: 3"=1" Computed: *[Signature]* Drawn: *[Signature]* Checked: *[Signature]* Traced: *[Signature]*

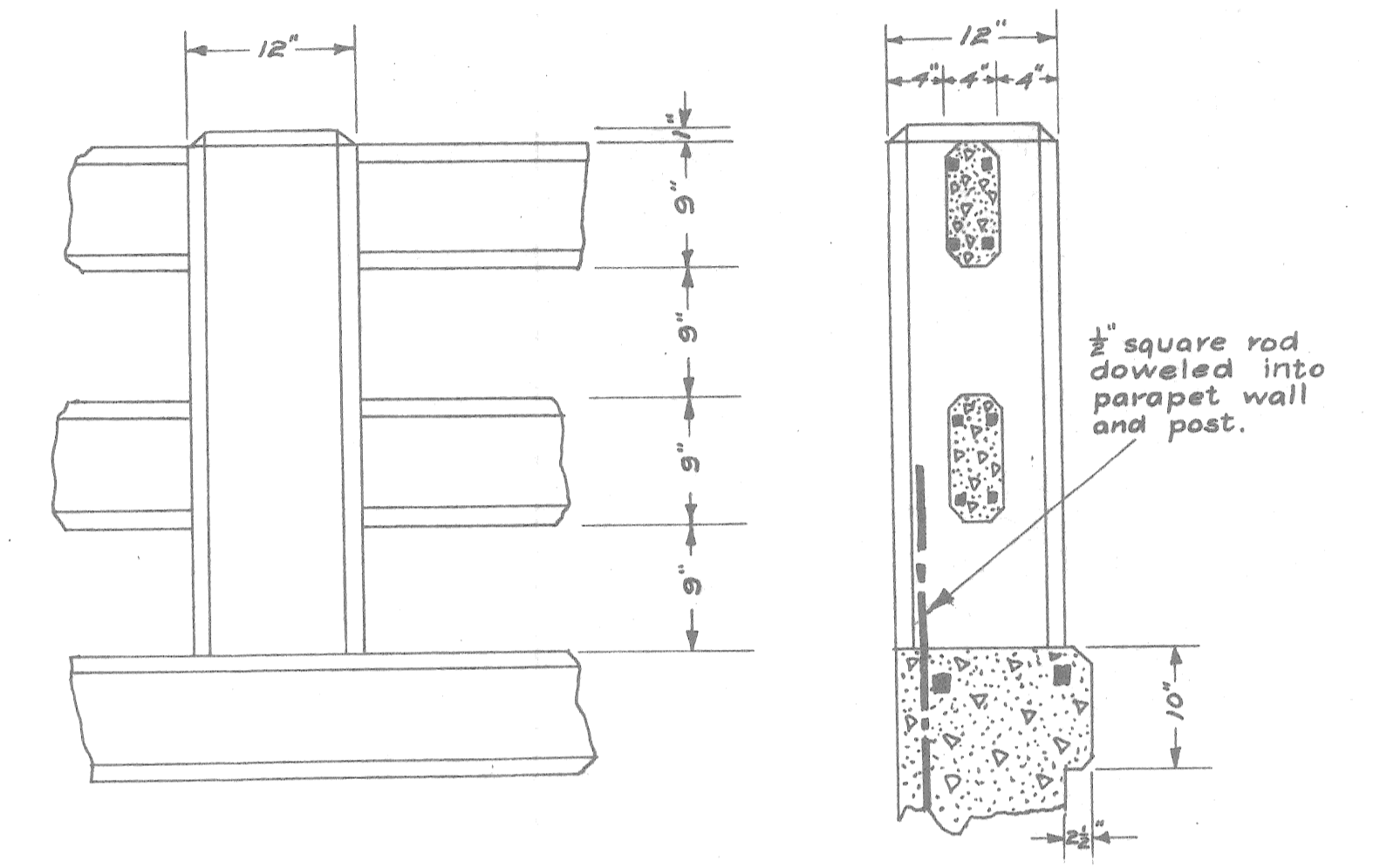
CITY ENGINEER'S OFFICE  
3000 WESTERN AVENUE

Case: A Draw: 13 I-2d

A-13 II-4  
File BW 245-8



HALF-PLAN OF EXTRADOS REINFORCEMENT.  
Scale 3' = 1"



DETAIL OF HAND RAIL  
Scale 1" = 1'

APPROVED: *Chromet Subbell*  
City Engineer

APPROVED: *J. H. Anderson*  
Asst Engineer

ASHLAND AVE. BRIDGE  
OVER FOX CREEK  
SOUTH OF EAST JEFFERSON  
CONCRETE ARCH

**CITY OF DETROIT**  
CITY ENGINEERS OFFICE  
AUGUST 21, 1917

Scale: As Shown Computed: *ASB* Drawn: *M.B.Z.* Checked: *ASB* Traced: *A. de la C.*

CITY ENGINEERS OFFICE  
A 13 I20