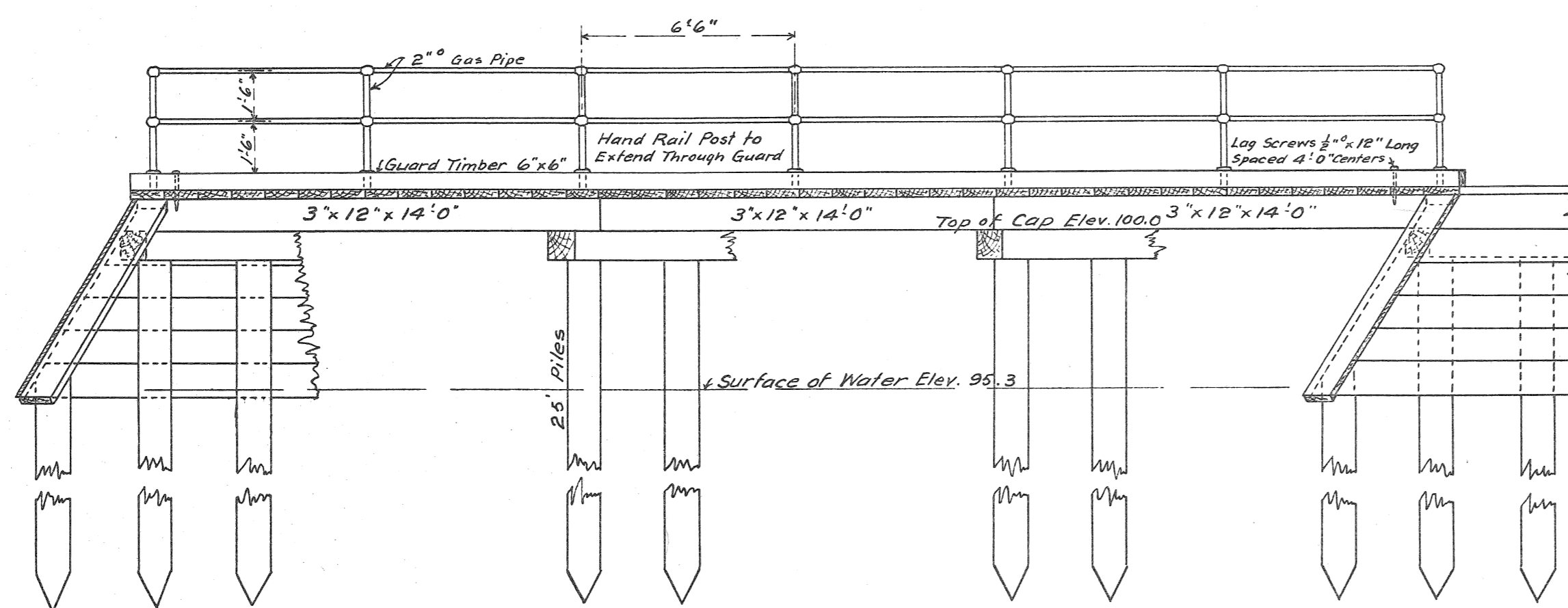
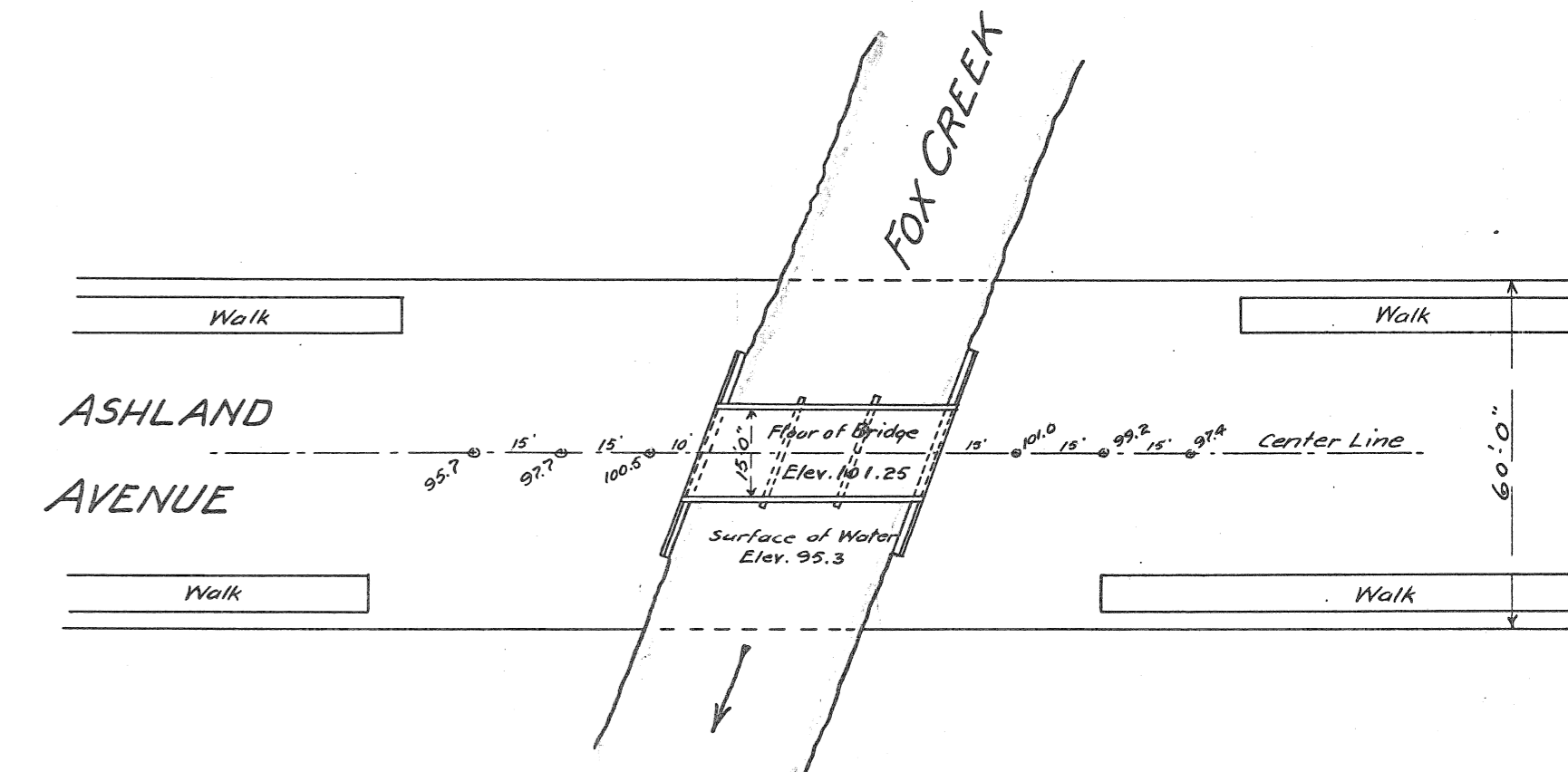


PLAN



ELEVATION



Bill of Timber

Bulkhead	3"x12"	1080	Ft. B.M.
Flooring	3"x12"	1920	" "
Joists	3"x12"	1512	" "
Guard	6"x6"	240	" "
Braces	4"x10"	160	" "
Caps	10"x10"	668	" "
Total		5580	" "
Piles	12 - 25 Ft. Long		
"	4 - 8 " "		

Bill of Iron

198	Lin. Ft.	2" Gas Pipe
14	Flanges	
10	Crosses	
14	Toes	
4	Angles	
12	Drift Bolts	1" x 24"
22	Lag Screws	1/2" x 12"
22	Cut Washers	1 1/2"
24	W.I. Spike	1/2" x 12"
Wire Spike	6"	150 lbs.
56	Wood Screws	3" Long

PLAN OF
PROPOSED WOODEN BRIDGE 39'-0" LONG
OVER FOX CREEK
ON ASHLAND AVENUE SOUTH OF JEFFERSON AVE.

Scale 1/4 in. = 1 ft. Except Where Noted

CITY ENGINEER'S OFFICE

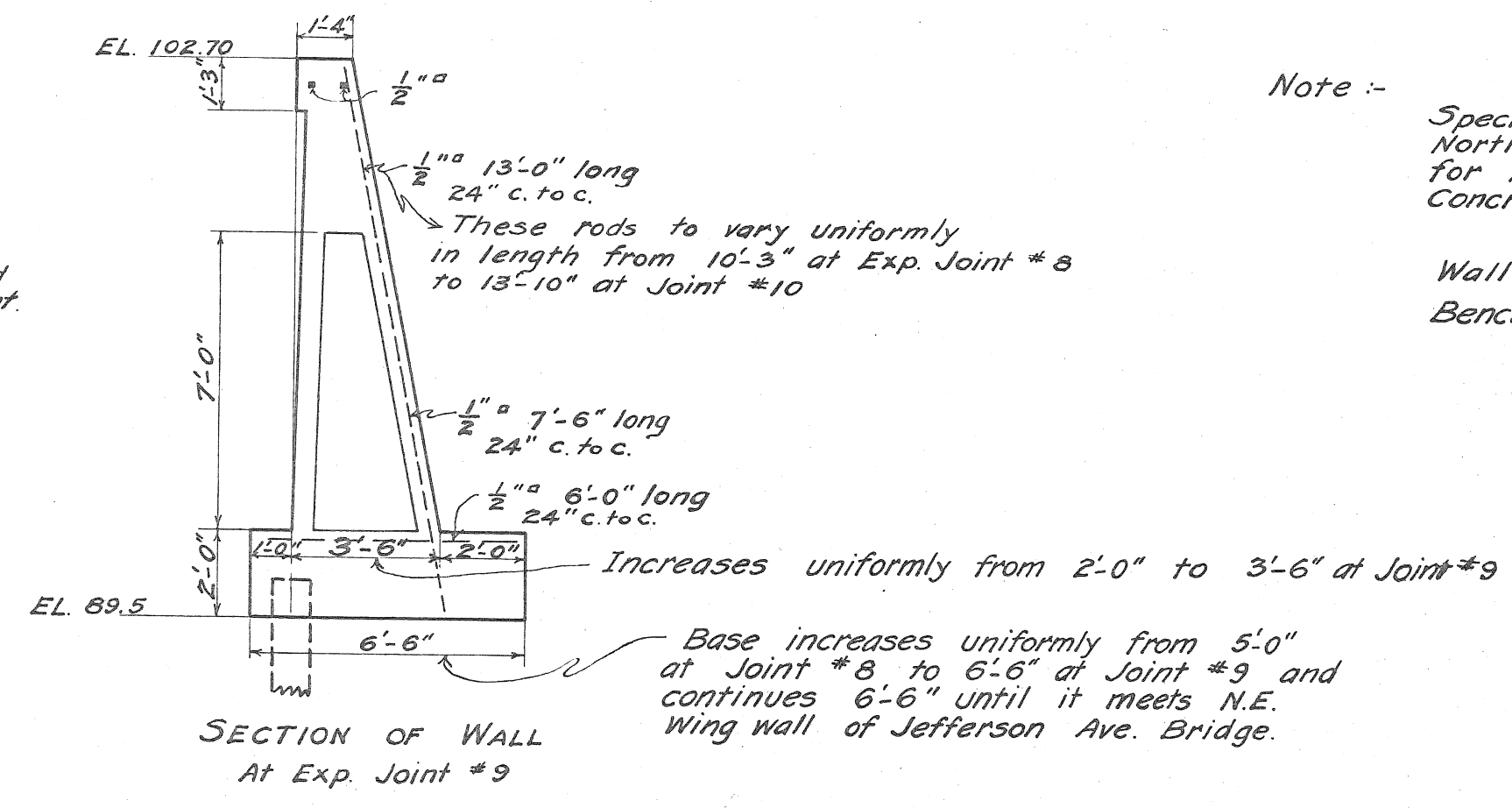
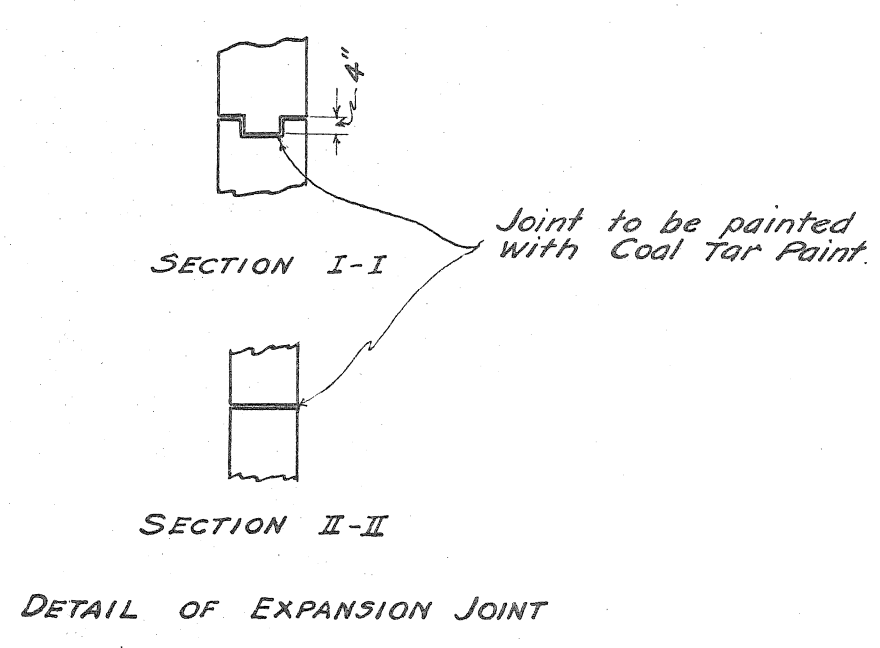
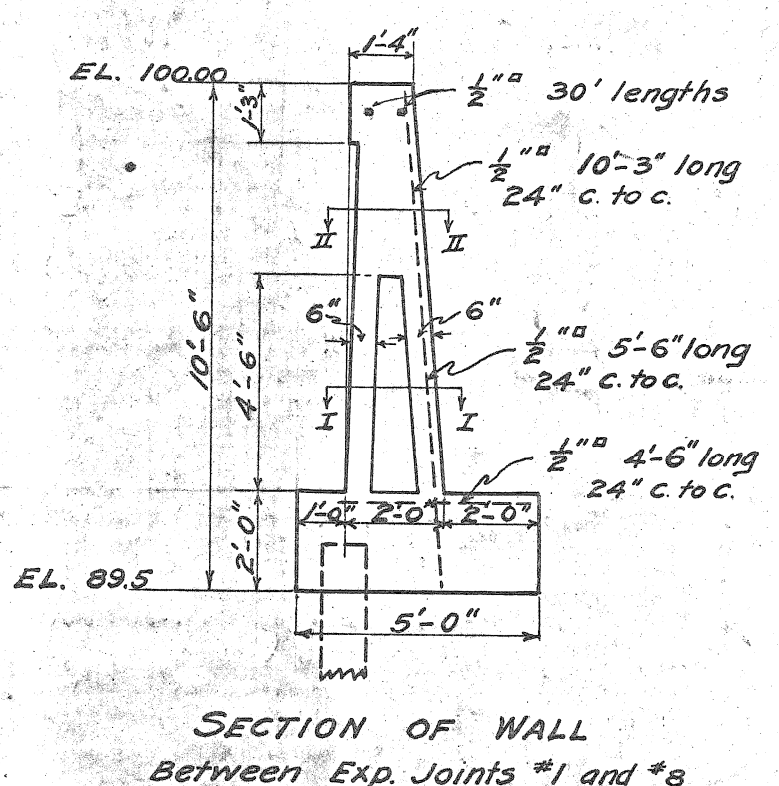
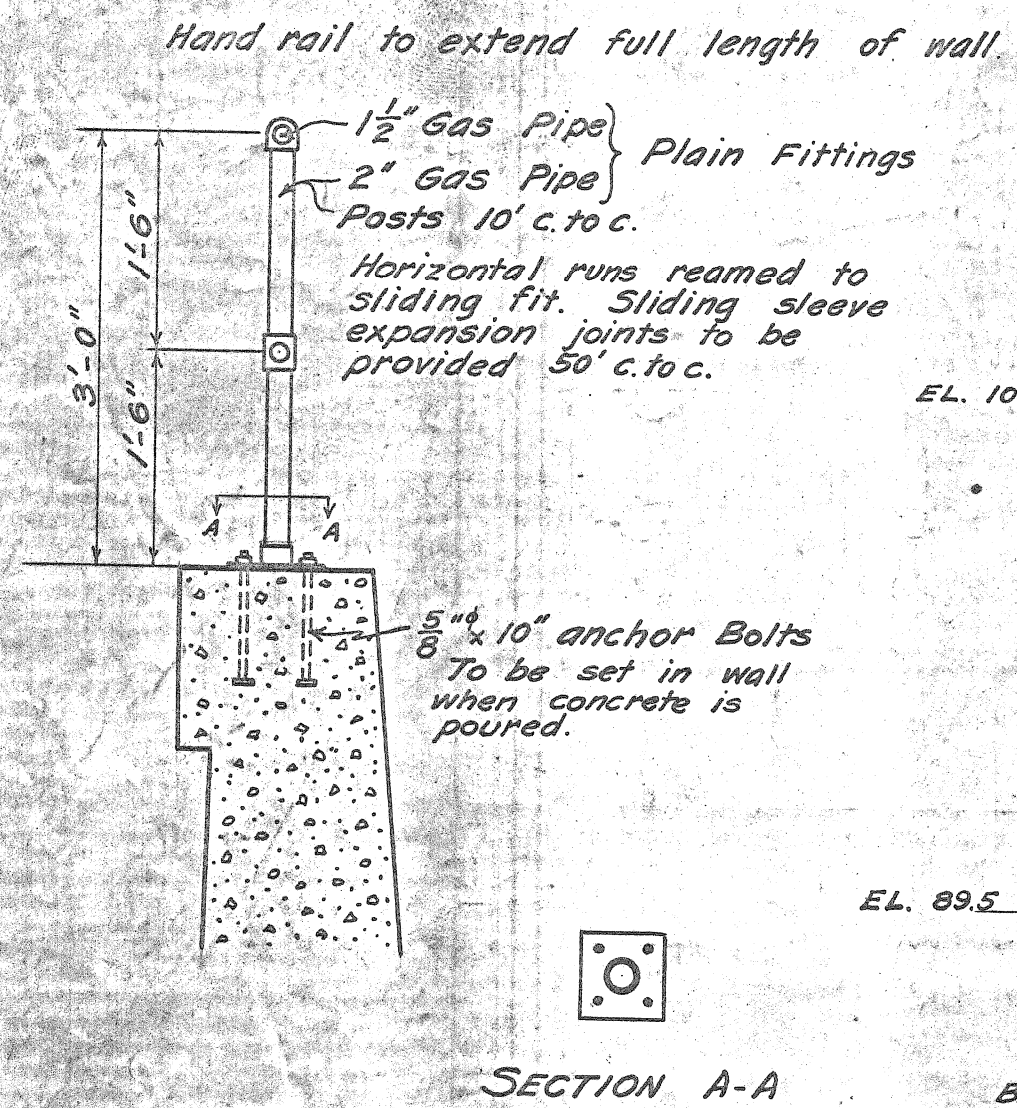
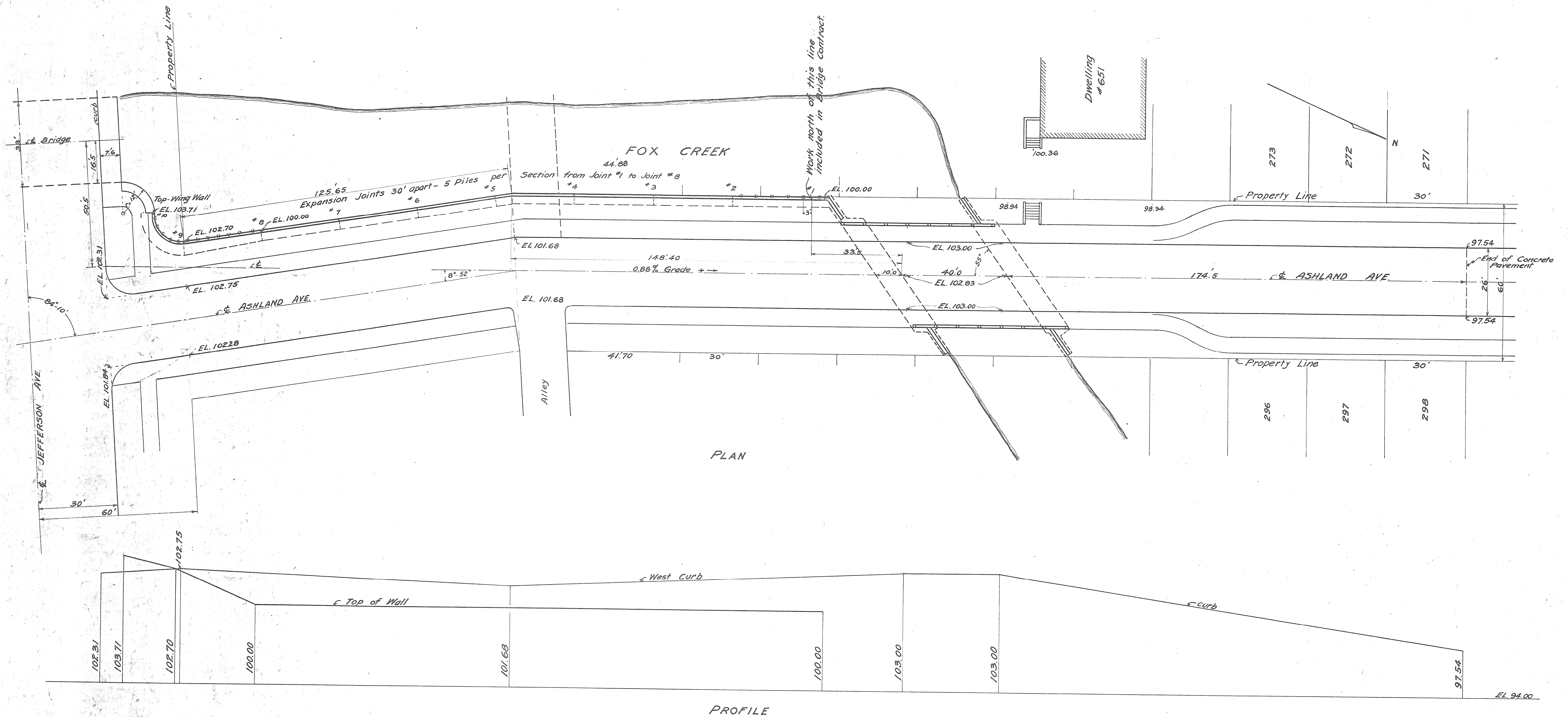
DETROIT, MICHIGAN.

B. 154 P. 59

May 29, 1909.

CITY ENGINEER'S OFFICE
LANSING, MICHIGAN
Case A, Drawn 13, No. I-21

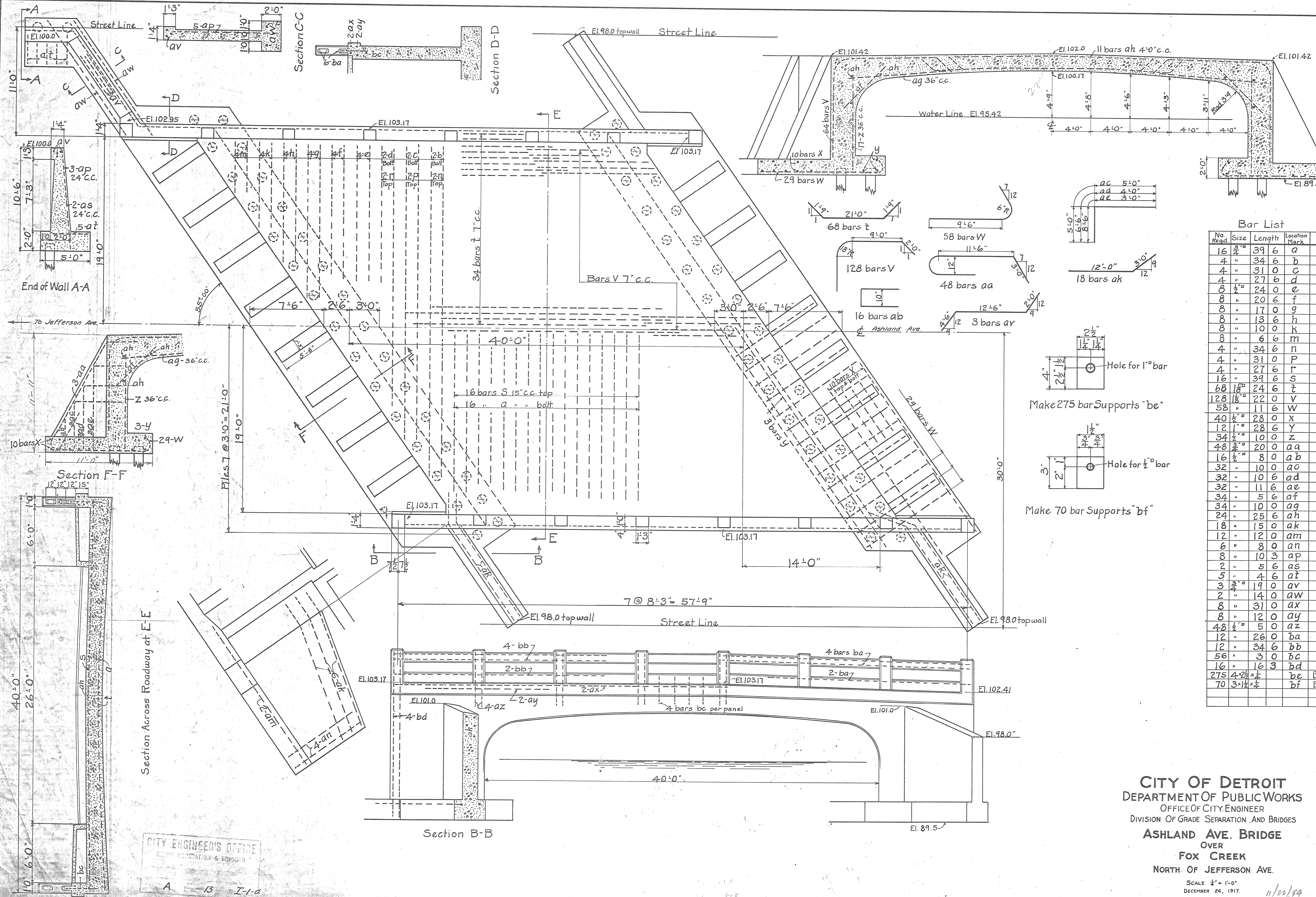
File BW 245-1



Note :-
Specifications for Ashland Ave. Bridge, North of Jefferson, to be followed for material and workmanship for Concrete Wall.
Wall to be poured in alternate sections
Bench Mark : N.E. Corner Jefferson & Alton Road on top of stone base of stone and brick column EL. 102.172 (see Grade Separation Book #12-P.39.)

CITY ENGINEER'S OFFICE
GRADE SEPARATION & BRIDGES
15-I No. 1

CITY OF DETROIT
DEPARTMENT OF PUBLIC WORKS
OFFICE OF CITY ENGINEER
DIVISION OF GRADE SEPARATION AND BRIDGES
LOCATION MAP
RETAINING WALL ALONG FOX CREEK
ON ASHLAND AVE.
NORTH OF JEFFERSON AVE.
SCALE: 1" = 20'
1918. 11/21/94
BW 245-2



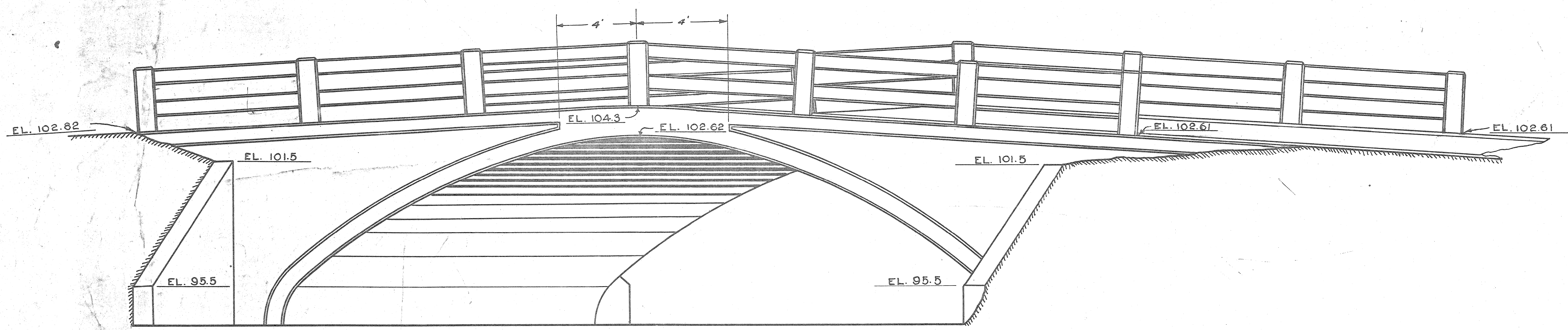
Bar List

No. Reqd.	Size	Length	Location Mark	Sketch
16	3/4"	39 6	a	
4	"	34 6	b	
4	"	31 0	c	
4	"	27 6	d	
8	1/2"	24 0	e	
8	"	20 6	f	
8	"	17 0	g	
8	"	13 6	h	
8	"	10 0	k	
8	"	6 6	m	
4	"	34 6	n	
4	"	31 0	p	
4	"	27 6	r	
16	"	34 6	s	
68	1/8"	24 6	t	
128	1/8"	22 0	v	
58	"	11 6	w	
40	1/2"	28 0	x	
12	1/2"	28 6	y	
34	1/2"	10 0	z	
48	1/2"	20 0	aa	
16	1/2"	8 0	ab	
32	"	10 0	ac	
32	"	10 6	ad	
32	"	11 6	ae	
34	"	5 6	af	
34	"	10 0	ag	
24	"	25 6	ah	
18	"	15 0	ak	
12	"	12 0	am	
6	"	8 0	an	
8	"	10 3	ap	
2	"	5 6	as	
5	"	4 6	at	
3	1/2"	19 0	av	
2	"	14 0	aw	
8	"	31 0	ax	
8	"	12 0	ay	
48	1/2"	5 0	az	
12	"	26 0	ba	
12	"	34 6	bb	
56	"	3 0	bc	
16	"	16 3	bd	
275	4/8" x 1/4"		be	see
70	3/4" x 1/4"		bf	"

CITY OF DETROIT
 DEPARTMENT OF PUBLIC WORKS
 OFFICE OF CITY ENGINEER
 DIVISION OF GRADE SEPARATION AND BRIDGES
ASHLAND AVE. BRIDGE
 OVER
FOX CREEK
 NORTH OF JEFFERSON AVE.
 SCALE 1/4" = 1'-0"
 DECEMBER 26, 1917.

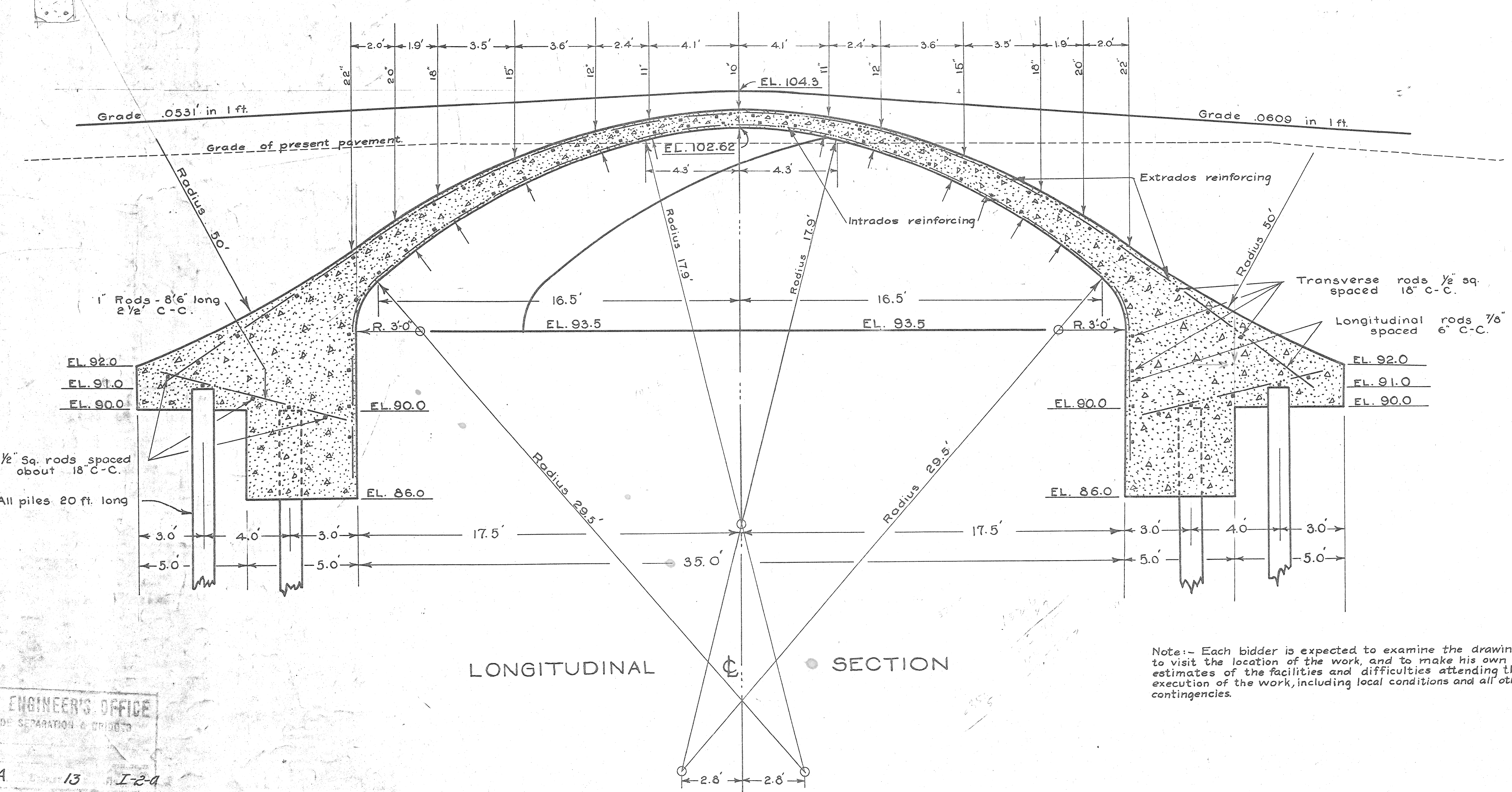
CITY ENGINEER'S OFFICE
 GRADE SEPARATION & BRIDGES
 A 13 I-1-a

1/22/19
 BW 745-3



ELEVATION

Note: All pavements, sidewalks, and such portion of fill as is not obtained from excavations made in course of bridge construction, will be made by the City of Detroit.



LONGITUDINAL SECTION

Note: - Each bidder is expected to examine the drawings, to visit the location of the work, and to make his own estimates of the facilities and difficulties attending the execution of the work, including local conditions and all other contingencies.

APPROVED: *Charles H. Hubbell*
City Engineer

APPROVED: *J. H. ...*
Asst Engineer

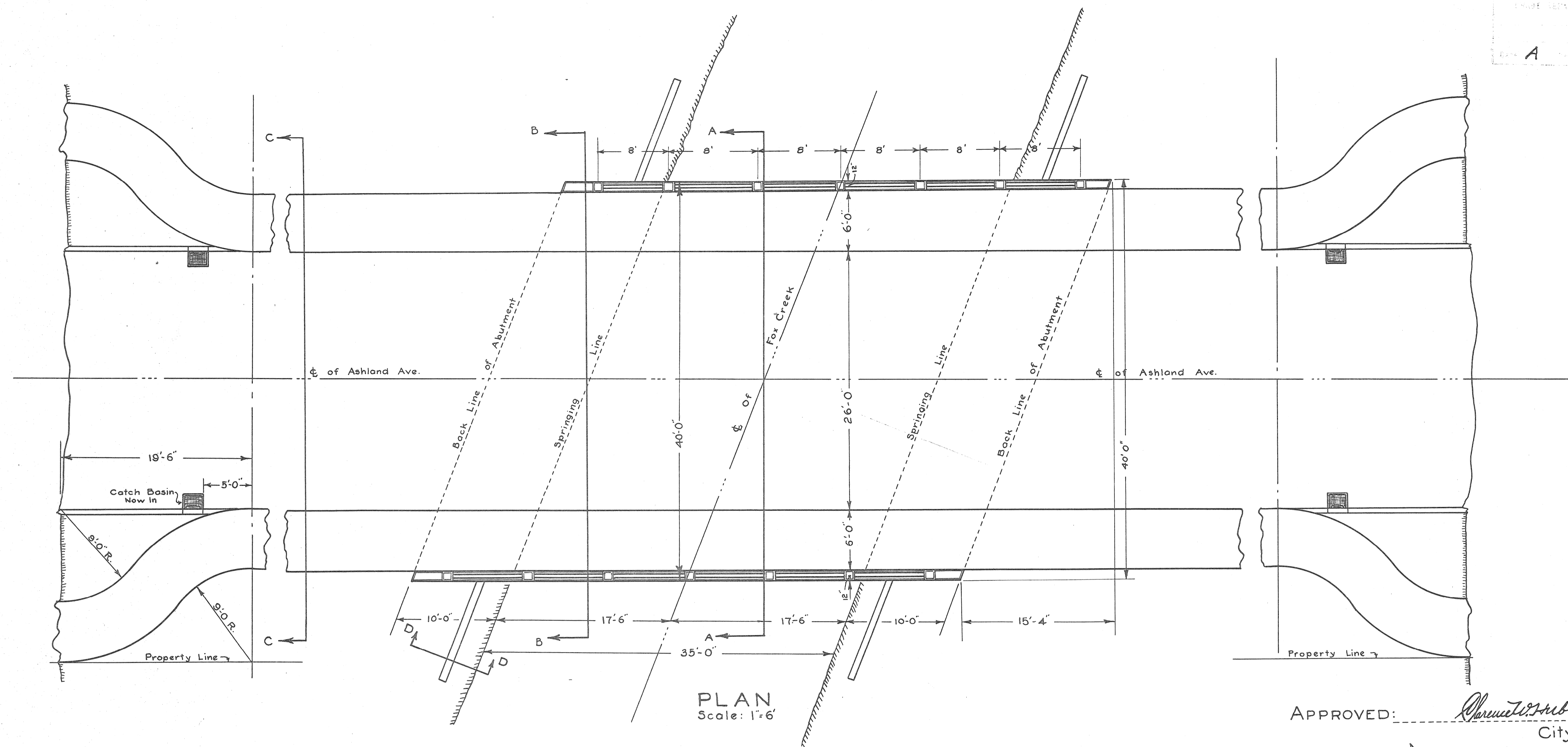
**ASHLAND AVE. BRIDGE
OVER FOX CREEK
SOUTH OF EAST JEFFERSON
CONCRETE ARCH**

CITY OF DETROIT
CITY ENGINEER'S OFFICE
AUGUST 21, 1917.

CITY ENGINEER'S OFFICE
GRADE SEPARATION & BRIDGES
A 13 I-24

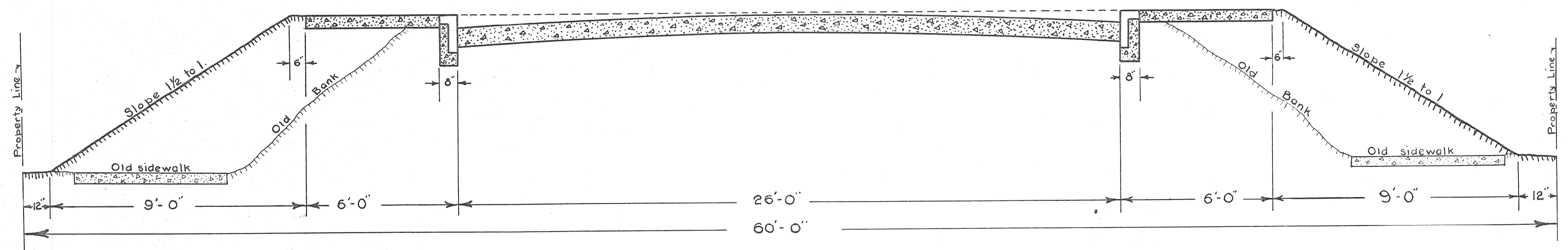
Scale: 1" = 3' Computed: *...* Drawn: *...* Checked: *...* Traced: *...*

File *BW 245-5* 11/22/1917



PLAN
 Scale: 1" = 6'

APPROVED: *Charles H. Hubbell*
 City Engineer
 APPROVED: *J. H. Anderson*
 Asst Engineer



SECTION C-C
 Scale: 1" = 3'

**ASHLAND AVE. BRIDGE
 OVER FOX CREEK
 SOUTH OF EAST JEFFERSON
 CONCRETE ARCH**

CITY OF DETROIT
 CITY ENGINEER'S OFFICE
 AUGUST 21, 1917.

Scale: As Shown Computed *MB* Drawn: *MB & Z* Checked: *Z* Traced: *MB & Z*

A-13 II-2 11/2/19
 File BW 245-6