

INDEX OF SHEETS

PLANS	SHEET No.
TITLE SHEET	1
GENERAL PLAN OF SITE	2
LOG OF BORINGS	3
GENERAL PLAN OF STRUCTURE	4
FOOTING DETAILS	5
MISCELLANEOUS DETAILS	6
SUPERSTRUCTURE DETAILS	7-8
PRECAST CULVERT SPECIFICATIONS	9
STEEL REINFORCEMENT	10
STEEL REINFORCEMENT AND QUANTITIES	11
DETOUR PLAN	12

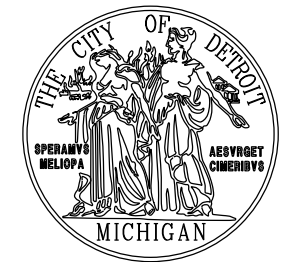
MDOT STANDARD PLANS

LIGHTED ARROWS AND BARRICADES	R-125A
SOIL EROSION AND SEDIMENTATION CONTROL MEASURES	R-96A
MOLDING, BEVEL, LIGHT STANDARD ANCHOR BOLT ASSEMBLY AND NAME PLATE DETAILS	B-103B
BRIDGE RAILING, SOLID PARAPET TYPE	B-18B
BRIDGE RAILING, 1 TUBE	B-24A

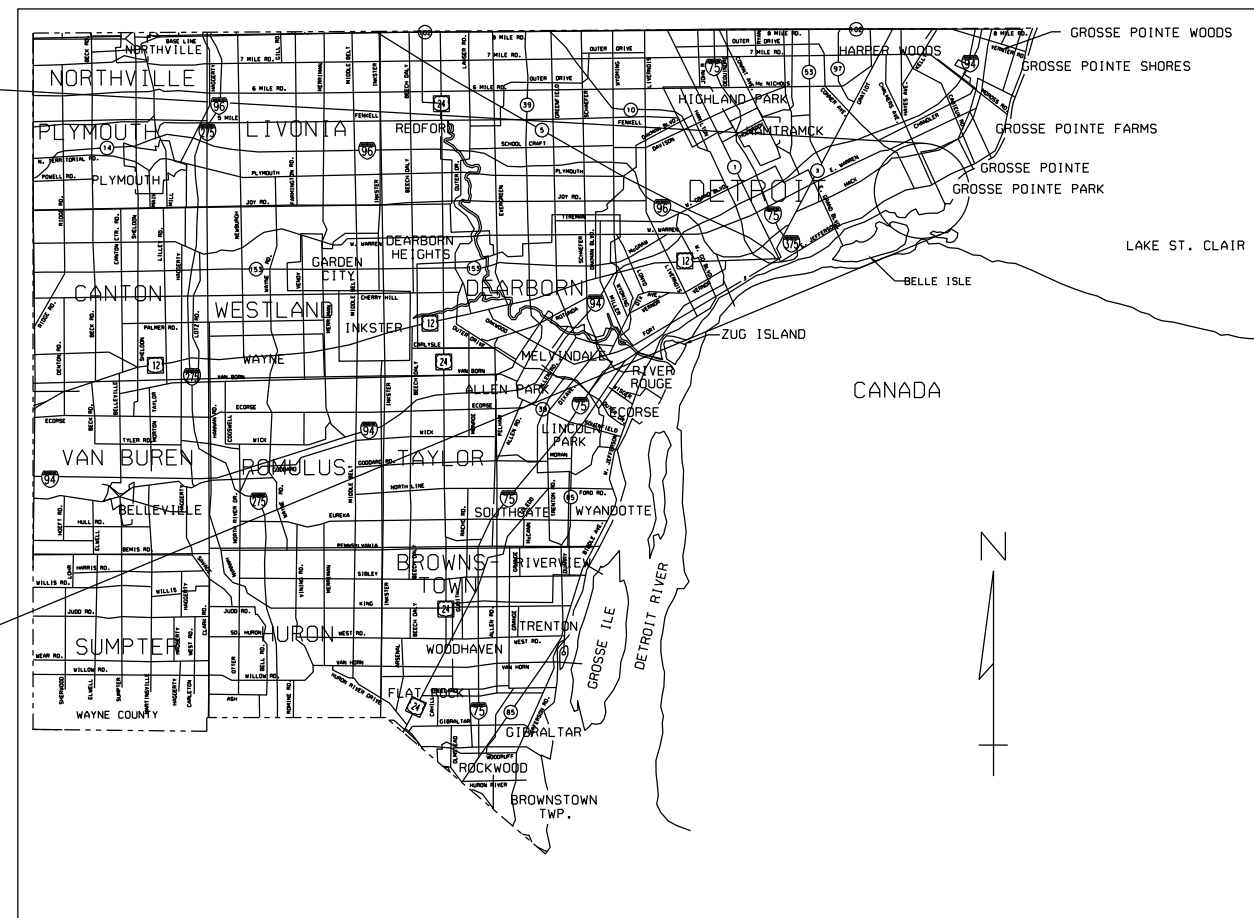
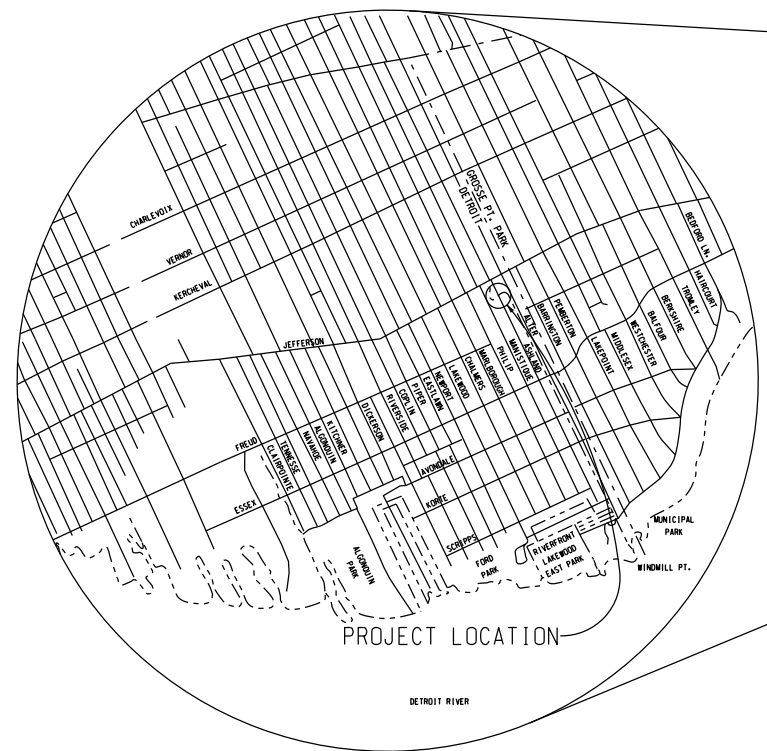
CITY OF DETROIT MICHIGAN DEPARTMENT OF PUBLIC SERVICE

PLAN AND PROFILE OF PROPOSED BRIDGE REPLACEMENT PROJECT

NO. _____
JOB NO.



REPLACEMENT OF THE ASHLAND AVE. BRIDGE OVER THE FOX CREEK



NOTES:

- THE DESIGN OF THIS STRUCTURE IS BASED ON CURRENT AASHTO STANDARD SPECIFICATIONS FOR HIGHWAY BRIDGES MS18 LOADING. LIVE LOAD PLUS IMPACT DEFLECTION DOES NOT EXCEED 1/1000 OF THE SPAN LENGTH.
- EXCEPT WHERE OTHERWISE INDICATED ON THESE PLANS, OR IN THE PROPOSAL AND SUPPLEMENTAL SPECIFICATIONS CONTAINED HEREIN, ALL MATERIALS AND WORKMANSHIP SHALL BE IN ACCORDANCE WITH THE MICHIGAN DEPARTMENT OF TRANSPORTATION STANDARD SPECIFICATIONS FOR CONSTRUCTION 1996 EDITION.
- THE STATIONING AS SHOWN ON THESE PLANS FOR THE INTERSECTION OF THE CENTERLINE OF BRIDGE AND ROADWAY CENTERLINE IS BELIEVED TO BE CORRECT. IT SHALL, HOWEVER, BE CHECKED AT THE TIME OF STARTING CONSTRUCTION, AND IF THE STATION SHOWN ON THE PLANS IS INCORRECT IT SHALL BE REPORTED TO THE DESIGN OFFICE IN DETROIT, AND THE STRUCTURE SHALL BE STAKED OUT USING THE ACTUAL INTERSECTION OF THE CENTERLINE OF THE BRIDGE AND ROADWAY CENTERLINE AS THE CONTROL POINT.
- ALL EXPOSED CONCRETE CORNERS SHOWN SQUARE ON THE PLANS SHALL BE BEVELED WITH 13 mm TRIANGULAR MOLDINGS EXCEPT AS OTHERWISE NOTED.
- THE DESIGN OF THE STRUCTURAL MEMBERS IS BASED ON MATERIAL OF THE FOLLOWING GRADES AND STRESSES.

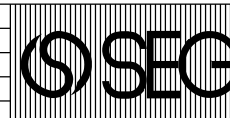
CONCRETE: GRADE S2	f'c = 21 MPa
CONCRETE: GRADE D	f'c = 28 MPa
STEEL REINFORCEMENT:	fy = 400 MPa

ALL DIMENSIONS ON THESE PLANS ARE IN MILLIMETERS EXCEPT AS NOTED.

METRIC

DIMENSIONS ARE IN MILLIMETERS UNLESS OTHERWISE SHOWN. ELEVATIONS, COORDINATES, CURVE AND ALIGNMENT DATA ARE IN METERS. STATIONS ARE IN KILOMETERS + METERS.

REVISIONS	DSGN BY	C.D.P.	6-97
	DR'N BY	R.J.D.	6-97
	CK'D BY	R.G.W.	6-97
	APP'D BY		-97



SNELL ENVIRONMENTAL GROUP, INC. • A DLZ Company
151 W. CONGRESS, SUITE 328
DETROIT, MICHIGAN 48226
TELEPHONE (313) 961-4040



**CITY OF DETROIT
MICHIGAN**

**ASHLAND AVE.
OVER THE
FOX CREEK**

TITLE SHEET

SCALE	NOT TO SCALE
PROJECT NO.	9641-5160-03
SHEET NO.	1 OF 12

FILE NAME: 011TILE3.DGN

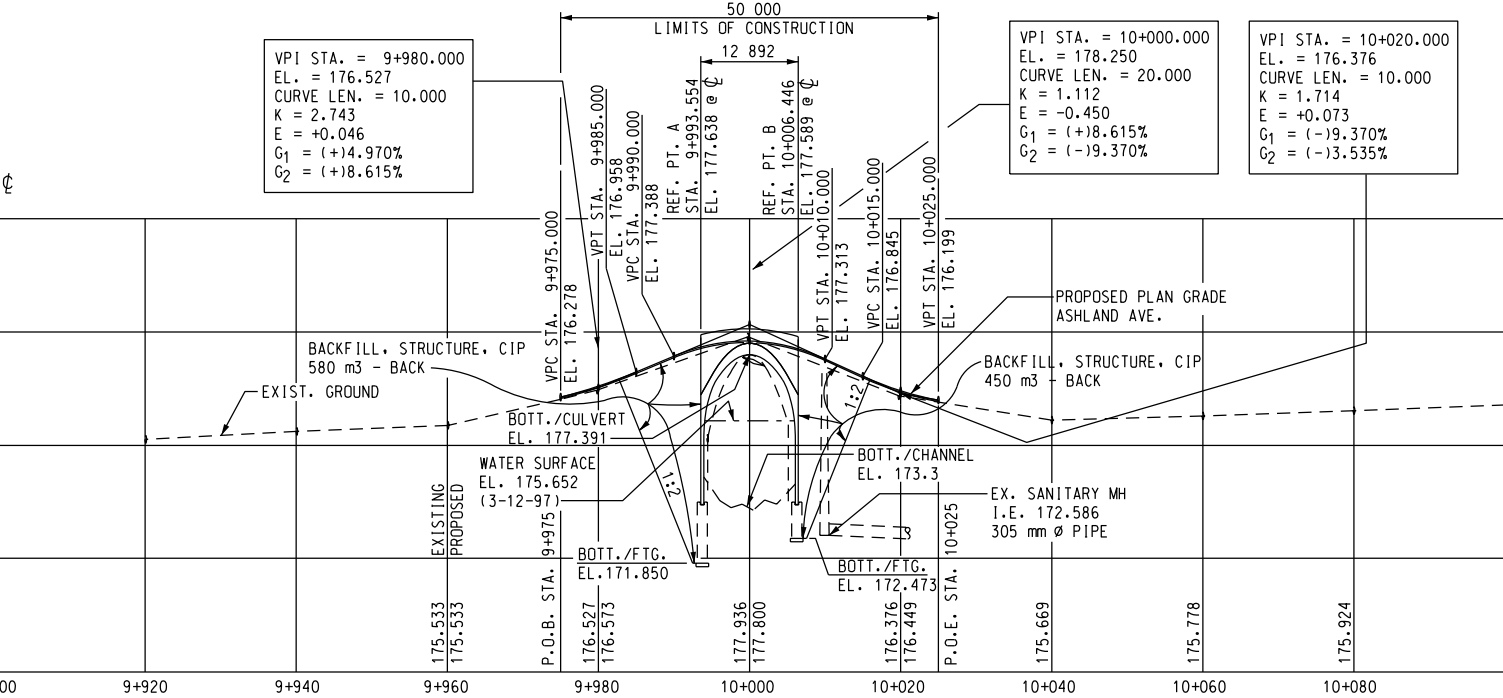
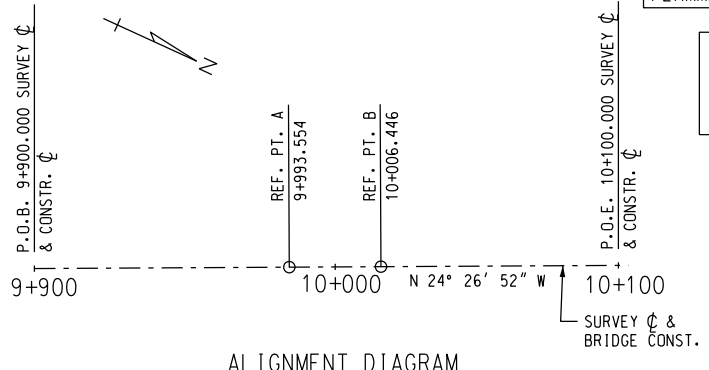
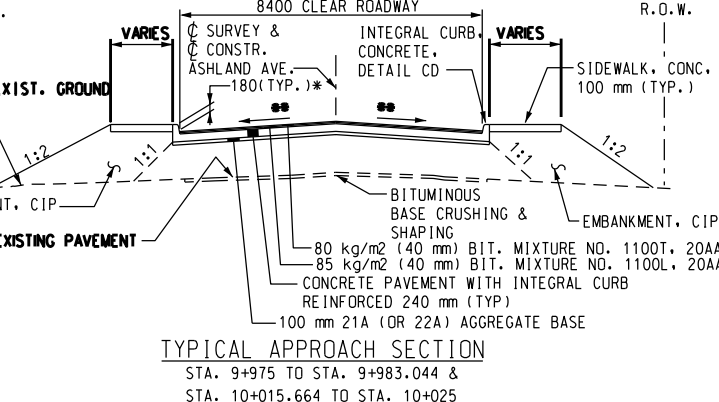
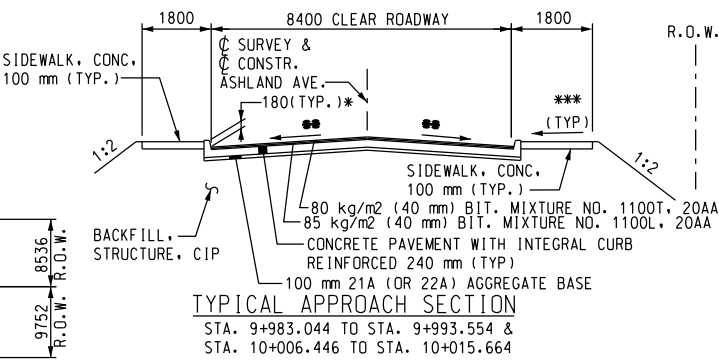
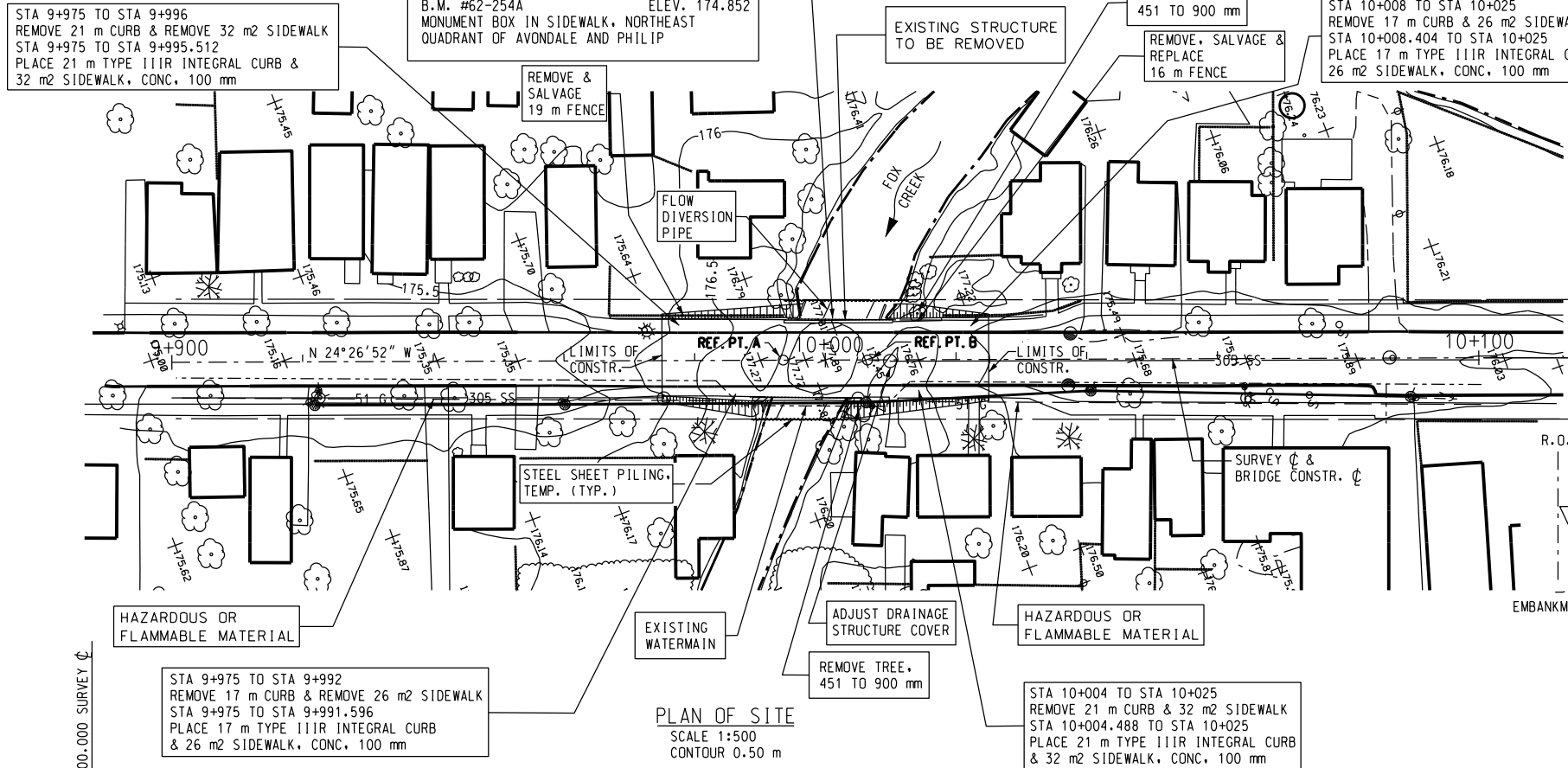
UTILITIES	
DETROIT EDISON 2000 SECOND AVE. ROOM 607 G.O., DETROIT, MICHIGAN 48226 ATTN.: JOHN SQUIRES PHONE No.: (313) 235-6597	ELECTRIC
AMERITECH 4000 ALLEN RD., ROOM 101 ALLEN PARK, MICHIGAN 48101 ATTN.: DAVE BUCIENSKI PHONE No.: (313) 389-9819	TELEPHONE
MICHIGAN CONSOLIDATED GAS CO. DRAFTING CLERK MAIN REPLACEMENT TEAM NOBLE SECOND FLOOR 3200 HOBSON DETROIT, MICHIGAN 48201 PHONE No.: (313) 577-7236	GAS
CITY OF DETROIT WATER & SEWERAGE DEPARTMENT 735 RANDOLPH ST. DETROIT, MICHIGAN 48226 PHONE No.: (313) 224-4800	WATER & SEWAGE
CITY OF DETROIT PUBLIC LIGHTING DEPARTMENT 9449 GRINNEL DETROIT, MICHIGAN 48226 PHONE No.: (313) 267-7336	LIGHTING

EXISTING STRUCTURE
ONE - SPAN REINFORCED CONCRETE ARCH STRUCTURE MEASURING 11.28 METERS REFERENCE LINE TO REFERENCE LINE. BUILT IN 1917, 7925 mm CLEAR ROADWAY.

BENCH MARK
B.M. #61-255A ELEV. 174.776
MONUMENT BOX IN SIDEWALK, NORTHEAST QUADRANT OF SCRIPPS AND PHILIP
B.M. #62-254A ELEV. 174.852
MONUMENT BOX IN SIDEWALK, NORTHEAST QUADRANT OF AVONDALE AND PHILIP

PROPOSED REPLACEMENT
ASHLAND AVE. BRIDGE
MDOT - B01 OF 244
CITY - BW-245

WITNESSES		
WITNESS TO SURVEY ϕ STA. 9+900	(MAG NAIL)	
N 20° E	N & S IN W. SIDE 508 mm MAPLE	8.580 m
S 50° E	N & S IN W. SIDE 508 mm MAPLE	9.370 m
S 20° W	POWER POLE	8.334 m
WITNESS TO SURVEY ϕ STA. 10+100	(MAG NAIL)	
N 10° E	CENTER OF PHONE BOX	22.050 m
S 50° E	N & S IN W. SIDE POWER POLE	12.100 m
S 20° W	FENCE CORNER	14.430 m



- NOTES:
- * FEATHER APPROACH CURB ELEV. TO BRIDGE CURB ELEV.
 - ** TRANSITION FROM 0% AT BRIDGE TO MATCH EXISTING CROSS-SLOPE AT APPROACHES.
 - *** 31 mm/m OR AS DIRECTED BY THE ENGINEER (21 mm/m MIN., 62 mm/m MAX.), TRANSITION TO 0% AT BRIDGE.

CONTRACTOR IS ALERTED THAT AN ACTIVE WATERMAIN CURRENTLY EXISTS ON THE BRIDGE. IT IS CURRENTLY ATTACHED TO THE EAST FASCIA. THE WATERMAIN SHALL BE RELOCATED BY THE UTILITY COMPANY.

THE WORK COVERED BY THESE PLANS INCLUDES MAINTAINING TRAFFIC, REMOVAL OF EXISTING BRIDGE, CONSTRUCTION OF THE PROPOSED BRIDGE AND APPROACH WORK.

THE CONTRACTOR SHALL LOCATE ALL ACTIVE UNDERGROUND UTILITIES PRIOR TO STARTING WORK AND SHALL CONDUCT HIS OPERATIONS IN SUCH A MANNER AS TO ENSURE THAT THOSE UTILITIES NOT REQUIRING RELOCATION WILL NOT BE DISTURBED.

ASHLAND AVE. TRAFFIC IS TO BE DETOURED OVER EXISTING ROADS.

DATUM REFERS TO N.A.V.D. DATUM.

WATER LEVEL IS SUBJECT TO CHANGE. THE CONTRACTOR IS RESPONSIBLE FOR MAKING HIS OWN DETERMINATION OF WATER LEVELS THAT WILL EXIST DURING CONSTRUCTION.

MEASURES SHALL BE TAKEN TO PREVENT DEBRIS FROM FALLING FROM THE STRUCTURE. IF DEBRIS FALLS INTO THE WATERWAY, IT SHALL BE REMOVED WITHIN 24 HOURS. SINCE DISTURBANCE OF THE WATERWAY BOTTOM MAY BE AS HARMFUL AS THE DEBRIS ITSELF, THE PREVENTIVE MEASURES MUST BE MADE AS EFFECTIVE AS POSSIBLE. DEBRIS WHICH HAS PREVIOUSLY FALLEN FROM THE BRIDGE SHALL ALSO BE REMOVED AS DIRECTED BY THE ENGINEER.

TEMPORARILY STORED EXCAVATED MATERIAL SHALL NOT BE ALLOWED TO ERODE INTO THE WATERCOURSE.

ALL DISTURBED EXISTING GROUND AND ANY NEW FILL SLOPES SHALL BE SEED, FERTILIZED, AND MULCHED AS DIRECTED BY THE ENGINEER. TO BE INCLUDED IN THE PAY ITEMS "SEEDING, MIXTURE TUF," "FERTILIZER, CHEMICAL NUTRIENT, CLASS A," AND "MULCH BLANKET."

THE PAY ITEM "FLOW DIVERSION" SHALL INCLUDE DEWATERING, STEEL SHEET PILING, TEMPORARY, SANDBAGS AND FLOW DIVERSION PIPE.

2014 ESTIMATED TRAFFIC DISTRIBUTION



REVISIONS	DESCRIPTION	DATE

DSGN BY M.A.M. 6-97
DR'N BY R.J.D. 6-97
CK'D BY R.G.W. 6-97
FINAL CK'D BY M.D.W. 2-99
APP'D BY

SNELL ENVIRONMENTAL GROUP, INC. • A DLZ Company
151 W. CONGRESS, SUITE 328
DETROIT, MICHIGAN 48226
TELEPHONE (313) 961-4040



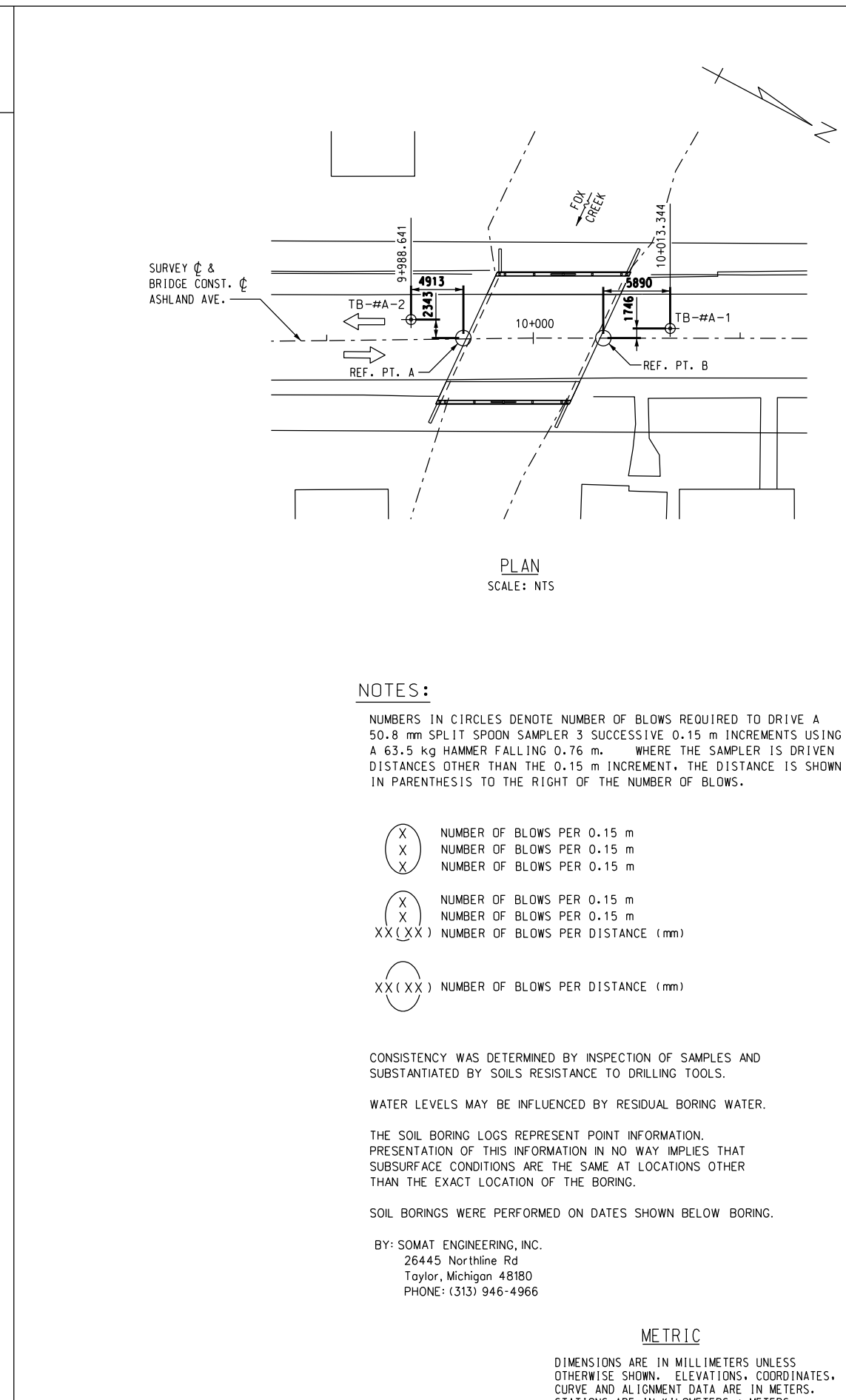
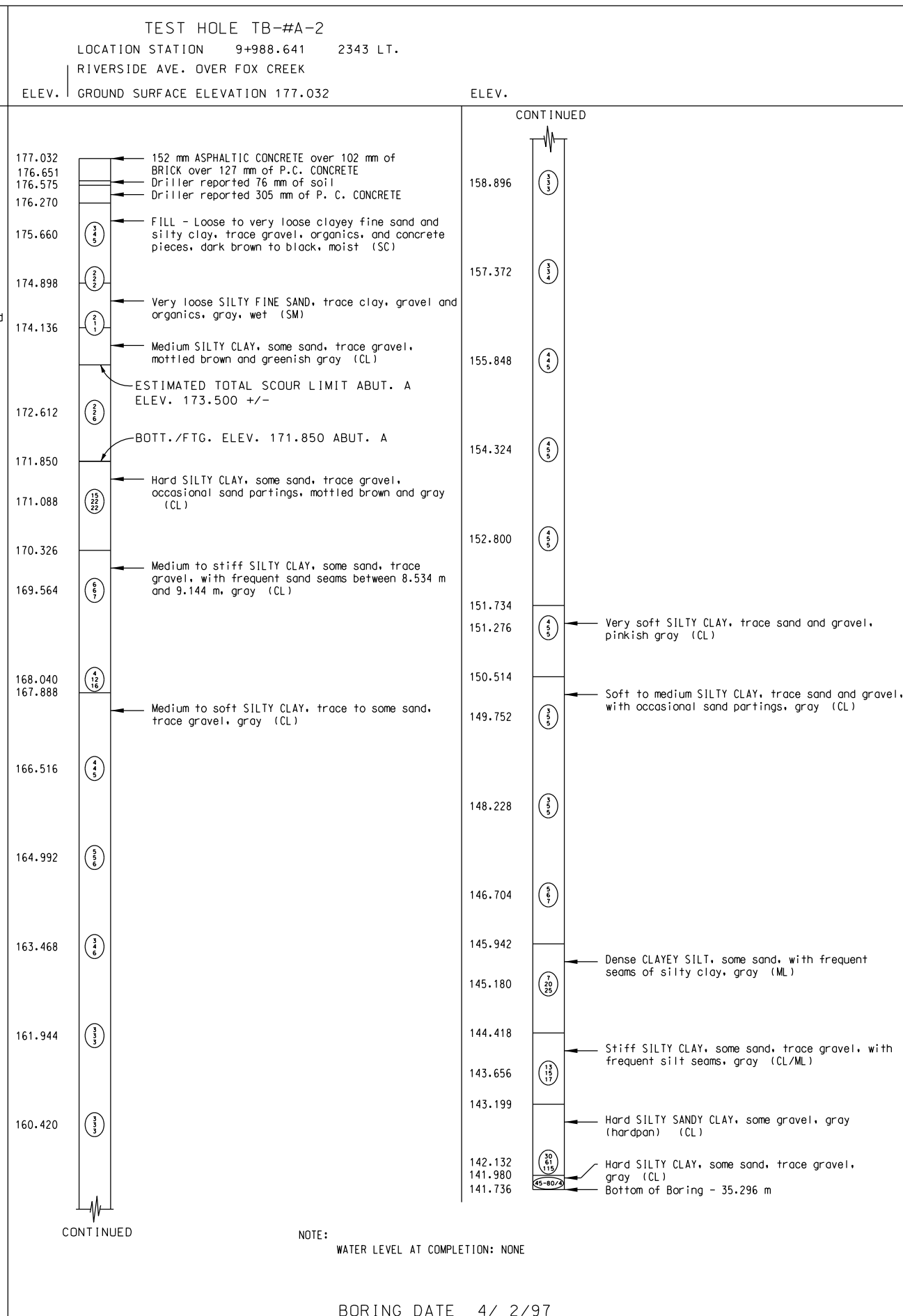
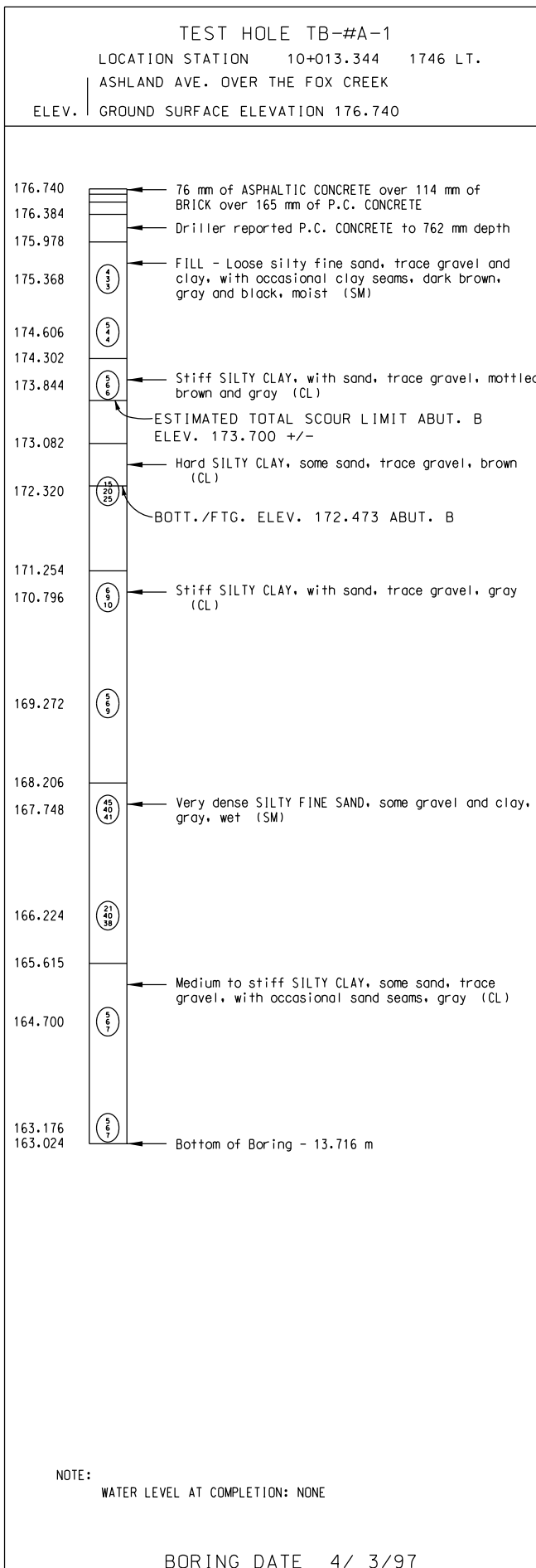
CITY OF DETROIT
MICHIGAN

ASHLAND AVE.
OVER THE FOX CREEK
(BW-245)

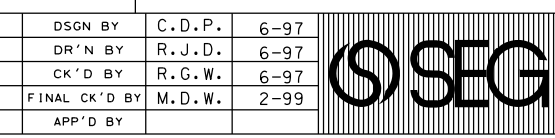
GENERAL
PLAN OF
SITE

SCALE	NOT TO SCALE
PROJECT NO.	9641-5160-03
SHEET NO.	A2 OF 19

FILE NAME: 0251TE03.DGN



REVISIONS	DSGN BY	C.D.P.	6-97
	DR'N BY	R.J.D.	6-97
	CK'D BY	R.G.W.	6-97
	FINAL CK'D BY	M.D.W.	2-99
	APP'D BY		



SNELL ENVIRONMENTAL GROUP, INC. A DLZ Company
151 W. CONGRESS, SUITE 328
DETROIT, MICHIGAN 48226
TELEPHONE (313) 961-4040



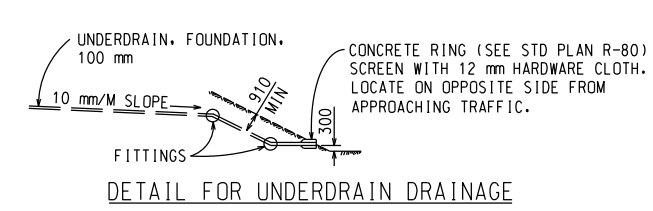
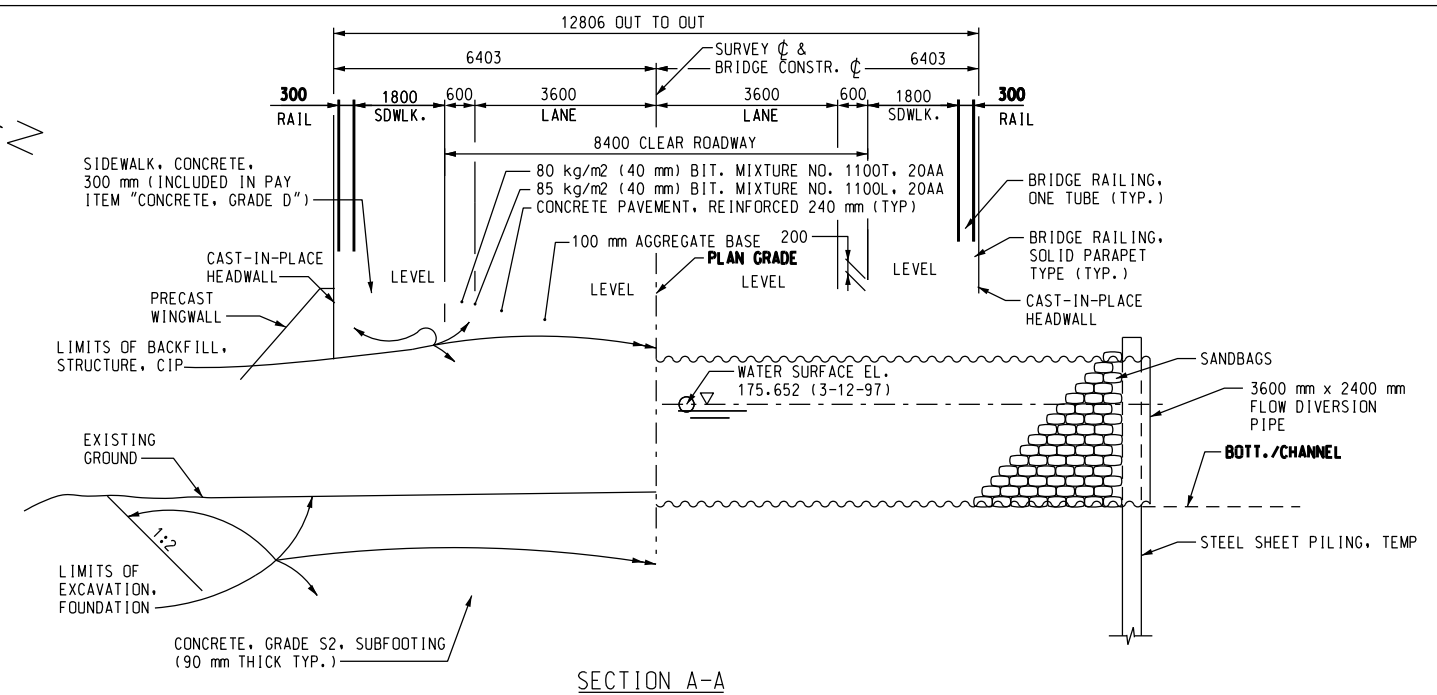
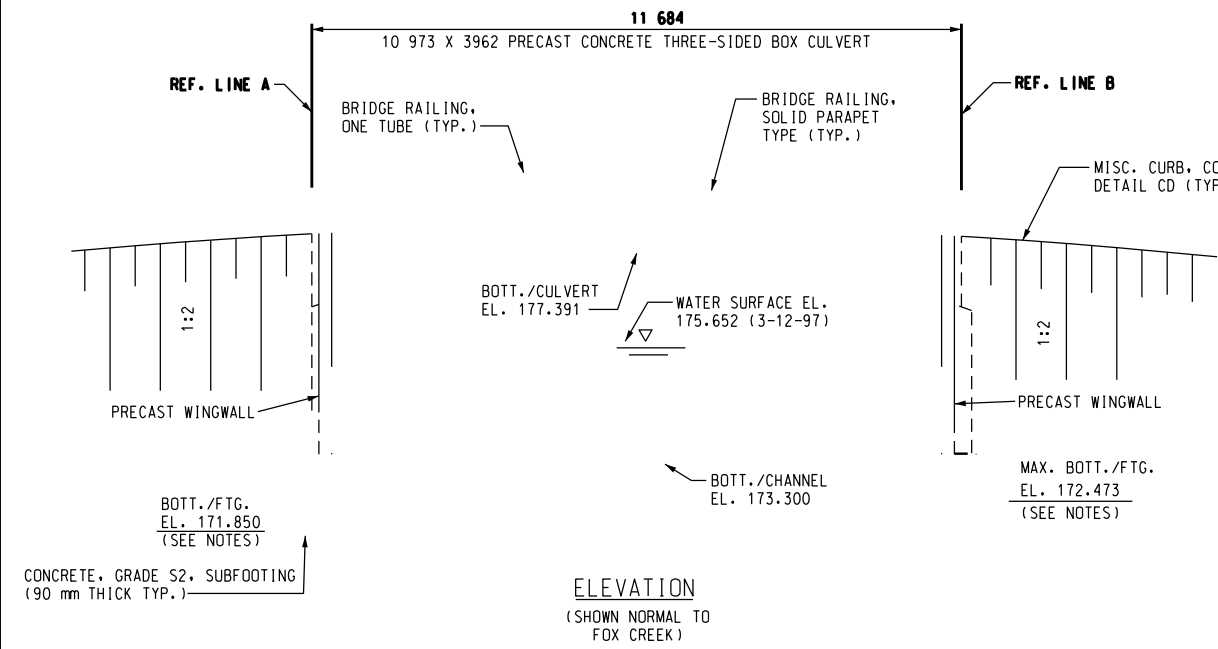
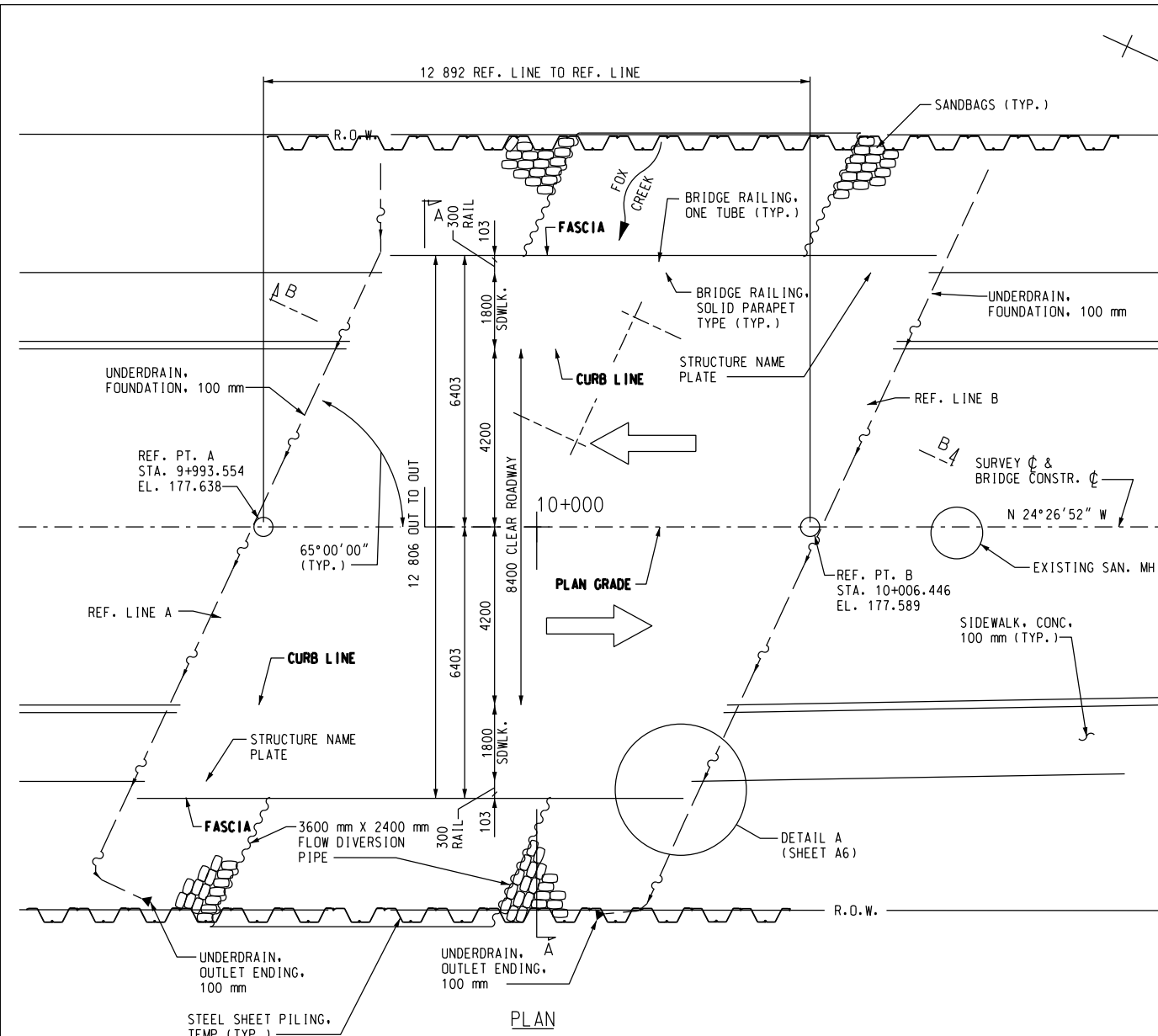
CITY OF DETROIT
MICHIGAN

ASHLAND AVE.
OVER THE FOX CREEK
(BW-245)

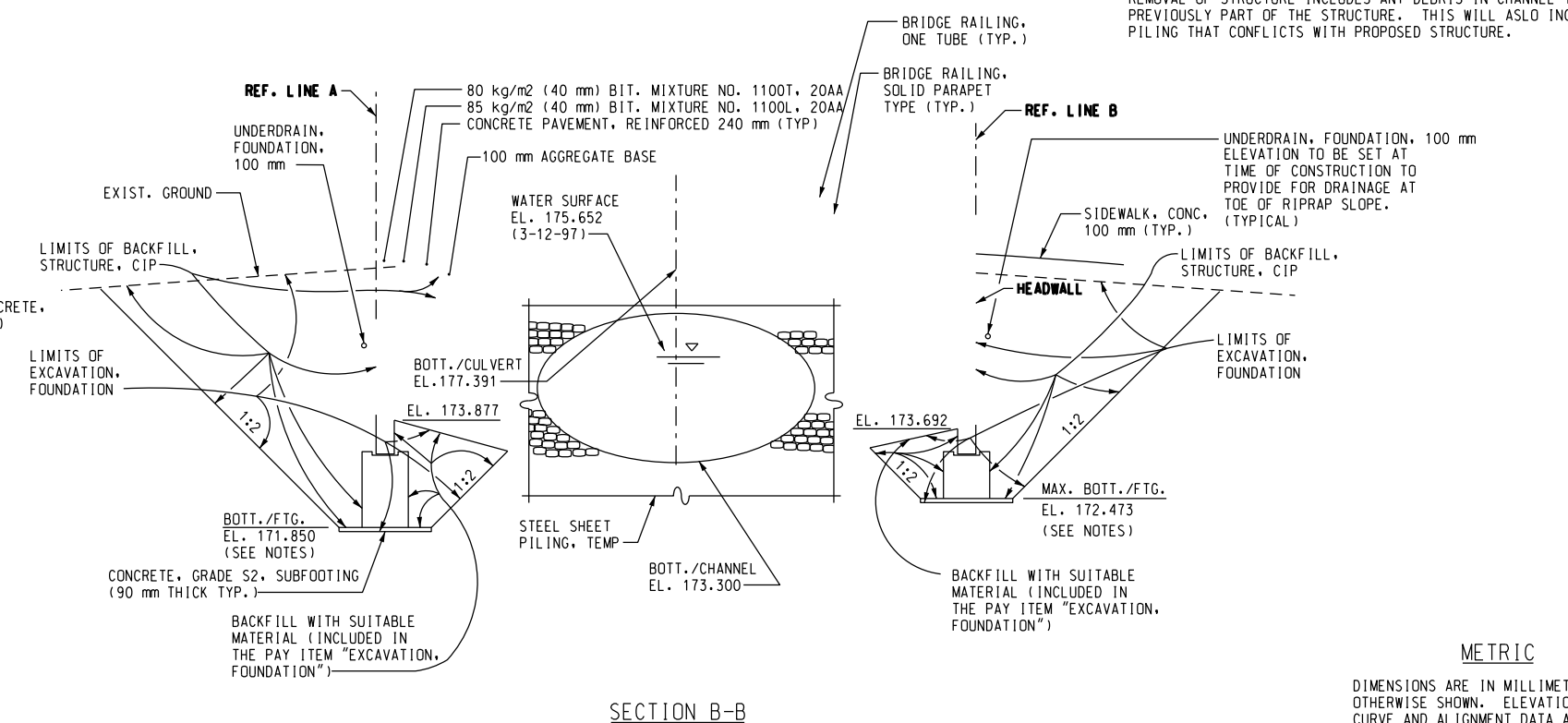
LOG OF BORINGS

SCALE	NOT TO SCALE
PROJECT NO.	9641-5160-03
SHEET NO.	A3 OF 19

FILE NAME: 02BORING.DGN



NOTES:
 THE DESIGN OF THIS STRUCTURE IS BASED ON CURRENT AASHTO STANDARD SPECIFICATIONS FOR HIGHWAY BRIDGES MS18 LOADING. LIVE LOAD PLUS IMPACT DEFLECTION DOES NOT EXCEED 1/1000 OF SPAN LENGTH. THE TOP OF THE ROADWAY AND TOPS OF SIDEWALKS ARE PARALLEL TO THE VERTICAL CURVE.
 STEEL SHEET PILING, TEMP., FLOW DIVERSION PIPE, SANDBAGS, AND DEWATERING SHALL BE INCLUDED IN THE PAY ITEM "FLOW DIVERSION".
 FOOTINGS SHALL BE EMBEDDED IN "HARD SILTY CLAY" AS DIRECTED BY ENGINEER.
 REMOVAL OF STRUCTURE INCLUDES ANY DEBRIS IN CHANNEL THAT WAS PREVIOUSLY PART OF THE STRUCTURE. THIS WILL ALSO INCLUDE ANY PILING THAT CONFLICTS WITH PROPOSED STRUCTURE.



METRIC
 DIMENSIONS ARE IN MILLIMETERS UNLESS OTHERWISE SHOWN. ELEVATIONS, COORDINATES, CURVE AND ALIGNMENT DATA ARE IN METERS. STATIONS ARE IN KILOMETERS + METERS.

REVISIONS	DESCRIPTION	DATE

DESIGNED BY	DATE
M. A. M.	6-97
R. J. D.	6-97
R. G. W.	6-97
M. D. W.	2-99

SEG
 SNELL ENVIRONMENTAL GROUP, INC. • A DLZ Company
 151 W. CONGRESS, SUITE 328
 DETROIT, MICHIGAN 48226
 TELEPHONE (313) 961-4040



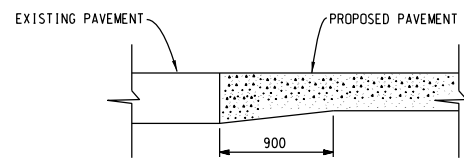
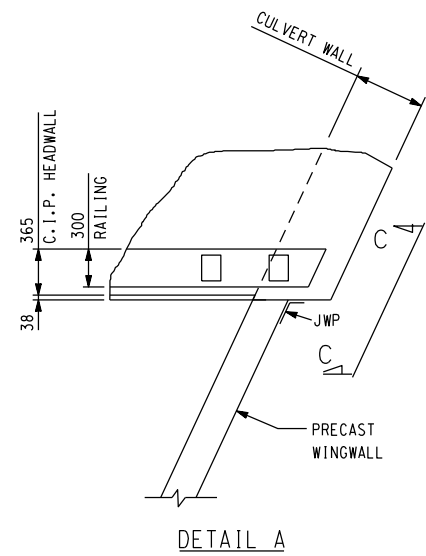
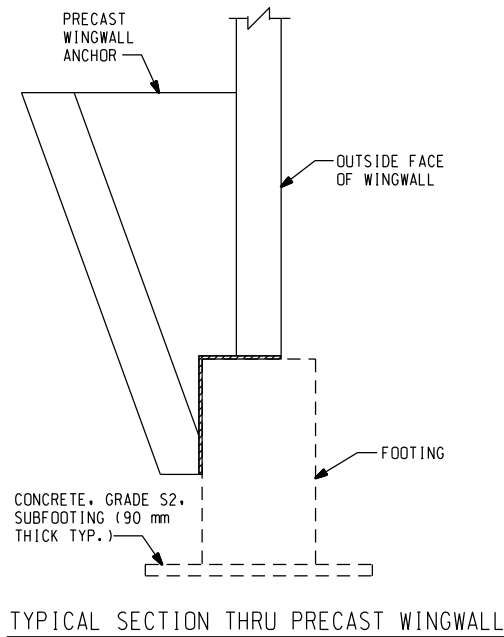
CITY OF DETROIT
 MICHIGAN

ASHLAND AVE.
 OVER THE FOX CREEK
 (BW-245)

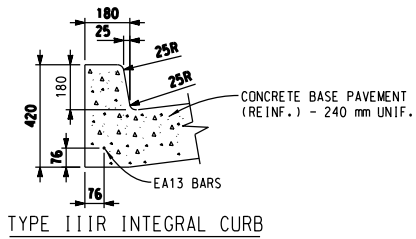
GENERAL PLAN OF
 STRUCTURE

SCALE	NOT TO SCALE
PROJECT NO.	9641-5160-03
SHEET NO.	A4 OF 19

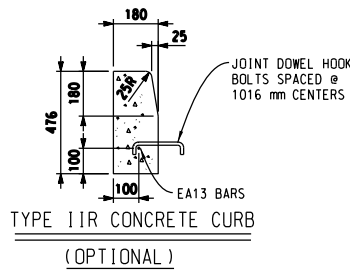
FILE NAME: 040PSTR3.DGN



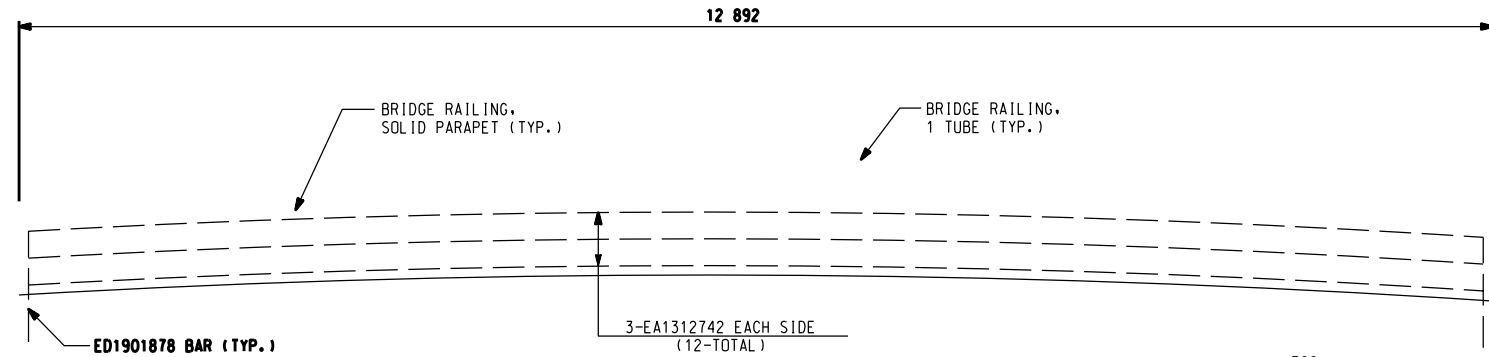
PROVIDE THIS THICKENED EDGE WHERE PROPOSED PAVEMENT MEETS EXIST. PAVEMENT
DETAIL OF THICKENED EDGE



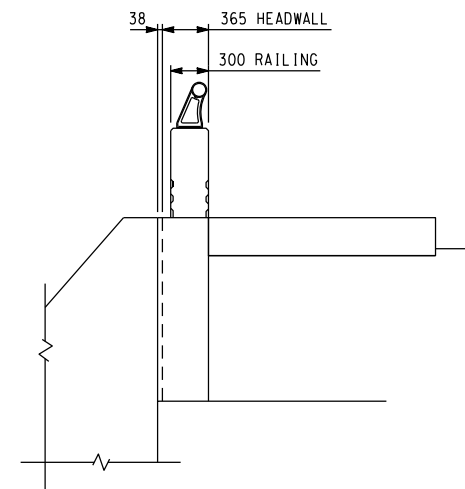
TYPE IIR INTEGRAL CURB



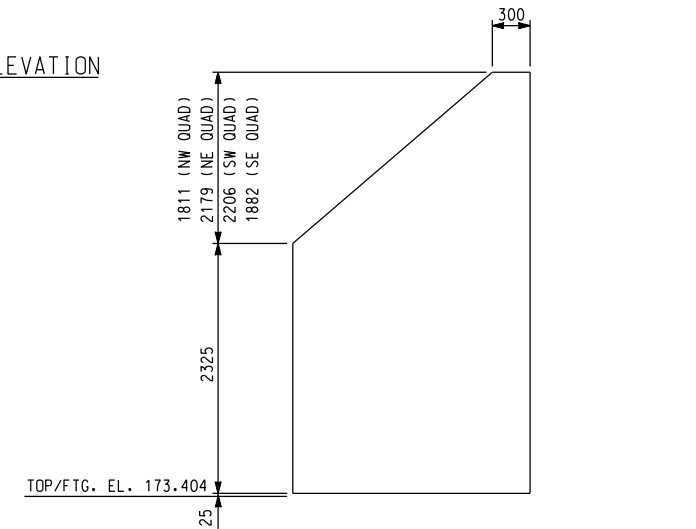
TYPE IIR CONCRETE CURB
(OPTIONAL)



BRIDGE RAILING ELEVATION



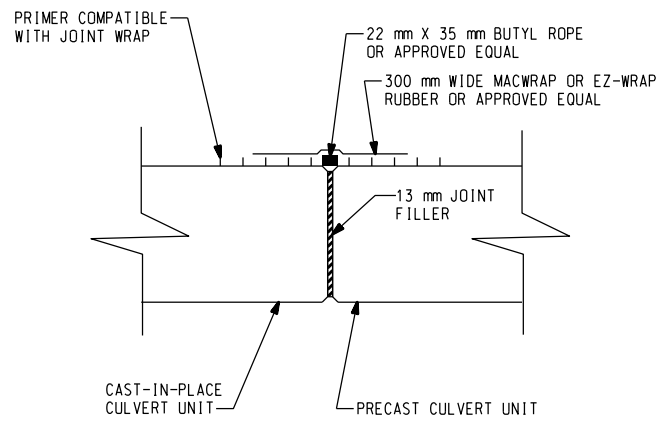
SECTION C-C



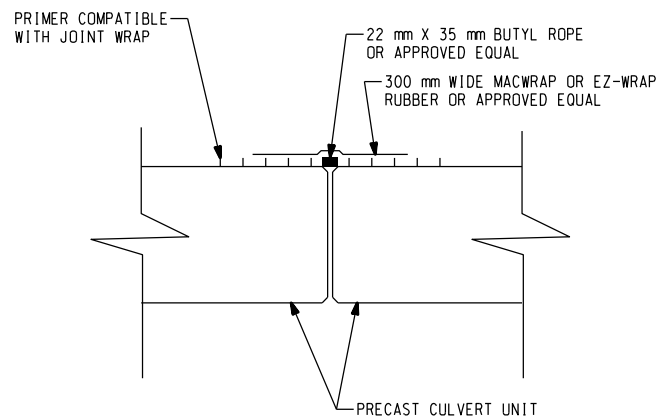
WINGWALL ELEVATION

(SHOWN PARALLEL TO WALL)

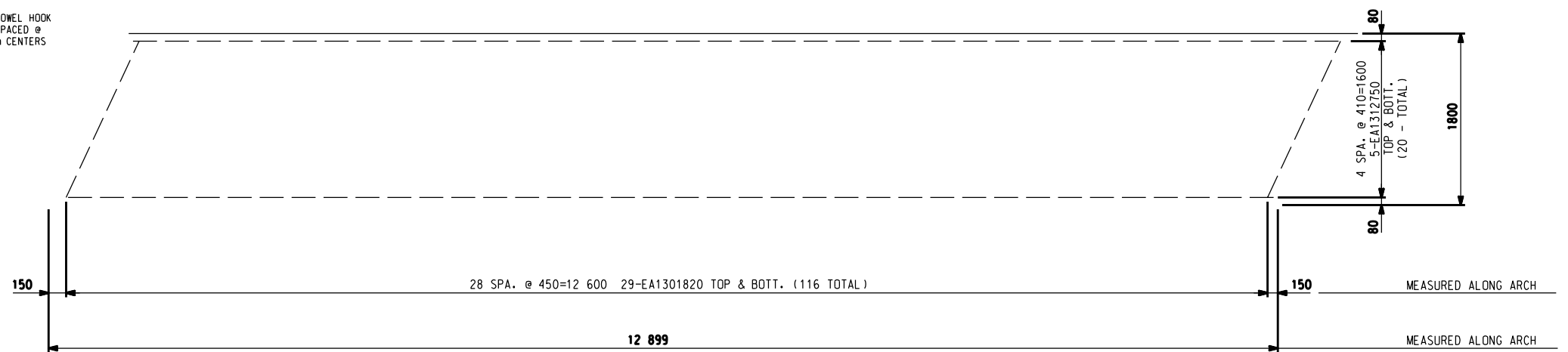
LENGTH OF WINGWALL SHALL BE DERIVED FROM PLAN OF FOOTING SHEET 5)



STANDARD CAST-IN-PLACE/PRECAST JOINT DETAIL



STANDARD PRECAST JOINT DETAIL



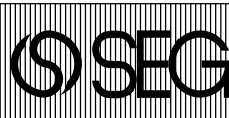
TYPICAL PLAN OF SIDEWALK

METRIC

DIMENSIONS ARE IN MILLIMETERS UNLESS OTHERWISE SHOWN. ELEVATIONS, COORDINATES, CURVE AND ALIGNMENT DATA ARE IN METERS. STATIONS ARE IN KILOMETERS + METERS.

REVISIONS	DESCRIPTION	DATE

DSGN BY	C.D.P.	6-97
DR'N BY	R.J.D.	6-97
CK'D BY	R.G.W.	6-97
FINAL CK'D BY	M.D.W.	2-99
APP'D BY		



SNELL ENVIRONMENTAL GROUP, INC. • A DLZ Company
151 W. CONGRESS, SUITE 328
DETROIT, MICHIGAN 48226
TELEPHONE (313) 961-4040

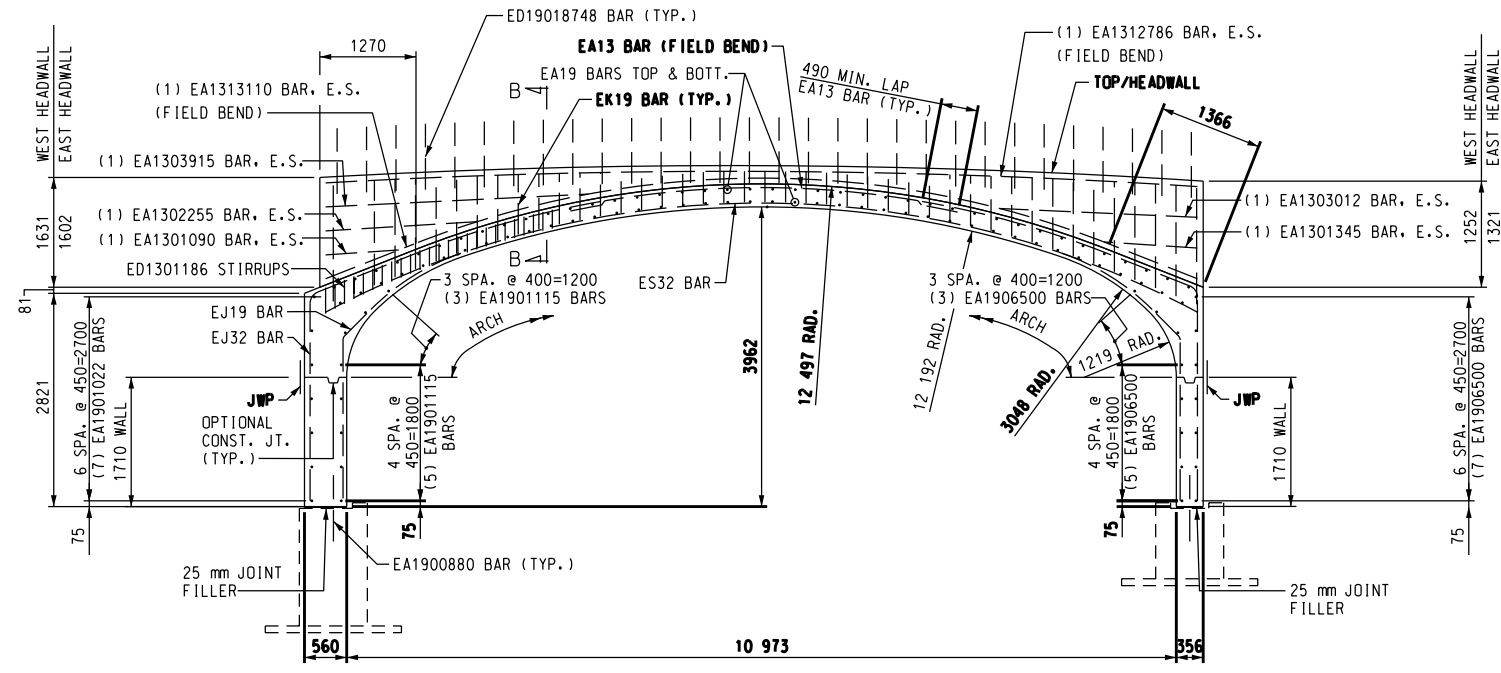


CITY OF DETROIT MICHIGAN

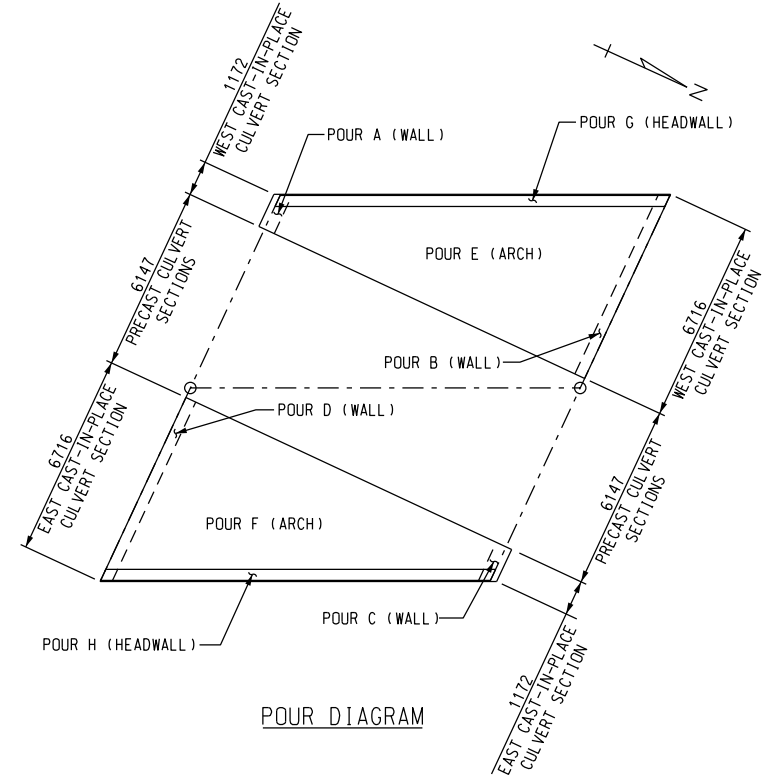
ASHLAND AVE. OVER THE FOX CREEK (BW-245)

MISCELLANEOUS DETAILS

SCALE	NOT TO SCALE
PROJECT NO.	9641-5160-01
SHEET NO.	A6 OF 19

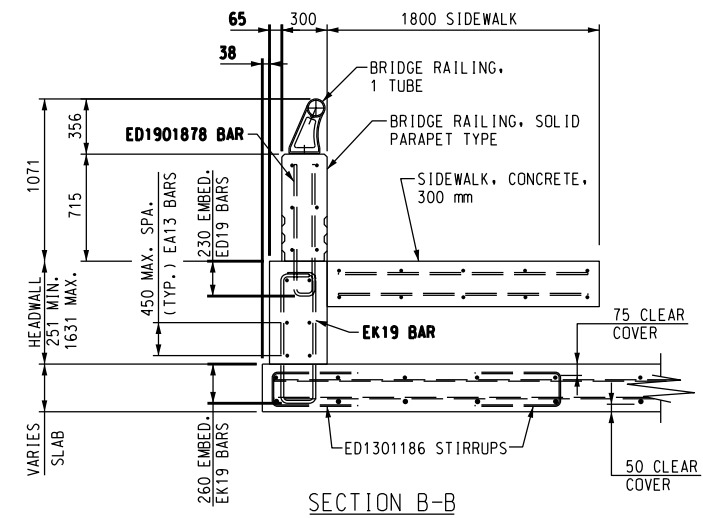


SECTION A-A



POUR DIAGRAM

SUPERSTRUCTURE CONCRETE QUANTITIES	
POUR	AMOUNT
A	1.5 m ³
B	4.1 m ³
C	1.5 m ³
D	4.1 m ³
E	16.4 m ³
F	16.4 m ³
G	4.9 m ³
H	4.9 m ³
TOTALS	54.0 m³



SECTION B-B

NOTES:

- FOR NAME PLATE MOUNTING, MOLDING AND BEVEL DETAILS, SEE STANDARD B-103-B. FOR BRIDGE RAILING, SOLID PARAPET TYPE, SEE STANDARD B-18-B. FOR BRIDGE RAILING ONE TUBE, SEE STANDARD B-24-A.
- FOR NAME PLATE LOCATION, SEE SHEET 4.
- A RUBBED SURFACE FINISH ON THE VERTICAL AND TOP CONCRETE SURFACES OF THE PARAPET RAILING IS REQUIRED ON THIS STRUCTURE.
- DUE TO THE "HINGED" CONNECTION BETWEEN THE CAST-IN-PLACE WALL AND THE FOOTING, THE CAST-IN-PLACE WALL SHALL BE SUPPORTED FROM BOTH FACES DURING ITS CONSTRUCTION AND DURING THE CONSTRUCTION OF THE "ARCH".
- BACKFILLING SHALL NOT BE PERMITTED PRIOR TO BOTH OF THE CAST-IN-PLACE "ARCHES" AND HEADWALLS ATTAINING THEIR RESPECTIVE MINIMUM 28 DAY COMPRESSIVE STRENGTHS.
- CAST-IN-PLACE CULVERT SECTIONS SHALL BE CONNECTED TO THE ADJACENT PRECAST CULVERT SECTIONS IN A MANNER THAT IS SIMILAR TO THE CONNECTION BETWEEN TWO ADJACENT PRECAST CULVERT SECTIONS. THE CONTRACTOR SHALL SUPPLY DETAILS OF SAID CONNECTION TO THE ENGINEER FOR APPROVAL.
- TOP OF HEADWALL IS PARALLEL TO THE VERTICAL CURVE.

METRIC
DIMENSIONS ARE IN MILLIMETERS UNLESS OTHERWISE SHOWN. ELEVATIONS, COORDINATES, CURVE AND ALIGNMENT DATA ARE IN METERS. STATIONS ARE IN KILOMETERS + METERS.

REVISIONS	DSGN BY	C.D.P.	6-97		SNELL ENVIRONMENTAL GROUP, INC. • A DLZ Company 151 W. CONGRESS, SUITE 328 DETROIT, MICHIGAN 48226 TELEPHONE (313) 961-4040		CITY OF DETROIT MICHIGAN	ASHLAND AVE. OVER THE FOX CREEK (BW-245)	SUPERSTRUCTURE DETAILS	SCALE	NOT TO SCALE
	DR'N BY	R.J.D.	6-97							PROJECT NO.	9641-5160-03
	CK'D BY	R.G.W.	6-97							SHEET NO.	A8 OF 19
	FINAL CK'D BY	M.D.W.	2-99							APP'D BY	

FILE NAME: 05SPRO3.DGN

BAR	DIMENSIONS										NO. REQ'D	TOTAL MASS
	a	b	c	d	e	f	g	h	j			
A1908520	8520										20	381
C1902768	444	2278	0	0	0	207	490				10	62
D1303458	1354	750	1354								84	289
SUBTOTAL =											732	kg
EA1900880	880										18	35
EPOXY SUBTOTAL =											35	kg
A1909935	9935										16	355
D1302212	731	750	731								86	189
SUBTOTAL =											544	kg
EA1900880	880										18	35
EPOXY SUBTOTAL =											35	kg
EA1301022	1022										7	7
EA1301090	1090										4	4
EA1301115	1115										8	9
EA1301345	1345										4	5
EA1301820	1820										116	210
EA1302255	2255										4	9
EA1303012	3012										4	12
EA1303915	3915										4	16
EA1305070	5070										30	151
EA1306500	6500										15	97
EA1312742	12742										12	152
EA1312750	12750										20	253
EA1312786	12786										4	51
EA1313110	13110										4	52
EJ1904097	2159	371	370	524	1414	3098					4	37
EJ1904098	2159	371	370	524	1415	3100					2	18
EJ1904101	2159	371	371	525	1417	3105					4	37
EJ1904103	2159	371	372	525	1419	3115					4	37
EJ1904108	2159	371	373	526	1423	3129					4	37
EJ1904116	2159	372	376	529	1428	3146					2	18
EJ1904124	2159	372	378	531	1434	3167					4	37
EJ1904133	2159	372	381	533	1441	3193					2	18
EJ1904144	2159	373	385	536	1449	3222					4	37
EJ1904156	2159	373	388	539	1458	3255					2	19
EJ1904170	2159	374	393	543	1468	3292					4	37
EJ1904184	2159	374	397	546	1479	3333					2	19
EJ1904199	2159	375	402	550	1490	3378					4	38
EJ1904216	2159	375	407	554	1503	3427					2	19
EJ1904235	2159	376	413	559	1517	3480					4	38
EJ3206888	2776	482	1223	1314	2798	12422					2	88
EJ3206891	2776	482	1223	1315	2800	12433					2	88
EJ3206897	2776	482	1225	1317	2804	12473					2	88
EJ3206907	2776	482	1229	1320	2811	12534					2	88
EJ3206921	2776	482	1233	1324	2821	12635					2	89
EJ3206940	2776	482	1239	1329	2835	12733					2	89
EJ3206963	2776	482	1246	1336	2851	12902					2	89

BAR	DIMENSIONS										NO. REQ'D	TOTAL MASS
	a	b	c	d	e	f	g	h	j			
EJ3206989	2776	482	1254	1344	2869	13030					2	90
EJ3207019	2776	481	1263	1352	2891	13276					2	90
EJ3207027	2695	563	1428	1535	2797	12422					2	90
EJ3207036	2695	563	1431	1538	2803	12473					2	90
EJ3207054	2776	481	1275	1362	2916	13427					2	90
EJ3207062	2695	563	1439	1546	2821	12635					2	90
EJ3207091	2776	481	1286	1373	2942	13760					2	91
EJ3207105	2695	563	1455	1560	2850	12902					2	91
EJ3207133	2777	481	1299	1385	2971	13962					2	91
EJ3207166	2696	562	1475	1579	2891	13276					2	92
EJ3207177	2777	481	1313	1398	3002	14346					2	92
EJ3207225	2777	480	1328	1412	3036	14523					2	93
EJ3207241	2696	562	1502	1604	2941	13760					2	93
EJ3207277	2777	480	1344	1427	3073	15044					2	93
EJ3207331	2696	561	1533	1633	3002	14346					2	94
EJ3207433	2696	561	1570	1667	3070	15044					2	95
EK1901367	436	140	140	215							1	3
EK1901373	439	140	140	215							2	6
EK1901387	446	140	140	215							1	3
EK1901389	447	140	140	215							1	3
EK1901413	459	140	140	215							1	3
EK1901417	461	140	140	215							2	6
EK1901419	462	140	140	215							1	3
EK1901427	466	140	140	215							1	3
EK1901431	468	140	140	215							1	3
EK1901445	475	140	140	215							1	3
EK1901449	477	140	140	215							1	3
EK1901453	479	140	140	215							2	6
EK1901477	491	140	140	215							1	3
EK1901485	495	140	140	215							1	3
EK1901497	501	140	140	215							1	3
EK1901501	503	140	140	215							1	3
EK1901517	511	140	140	215							1	3
EK1901529	517	140	140	215							1	3
EK1901555	530	140	140	215							1	3
EK1901559	532	140	140	215							1	3
EK1901569	537	140	140	215							1	4
EK1901583	544	140	140	215							1	4
EK1901623	564	140	140	215							1	4
EK1901629	567	140	140	215							1	4
EK1901631	568	140	140	215							1	4
EK1901647	576	140	140	215							1	4
EK1901705	605	140	140	215							2	8
EK1901709	607	140	140	215							1	4
EK1901723	614	140	140	215							1	4
EK1901789	647	140	140	215							1	4
EK1901795	650	140	140	215							1	4
EK1901799	652	140	140	215							1	4
EK1901809	657	140	140	215							1	4
EK1901885	695	140	140	215							1	4
EK1901899	702	140	140	215							1	4
EK1901901	703	140	140	215							1	4

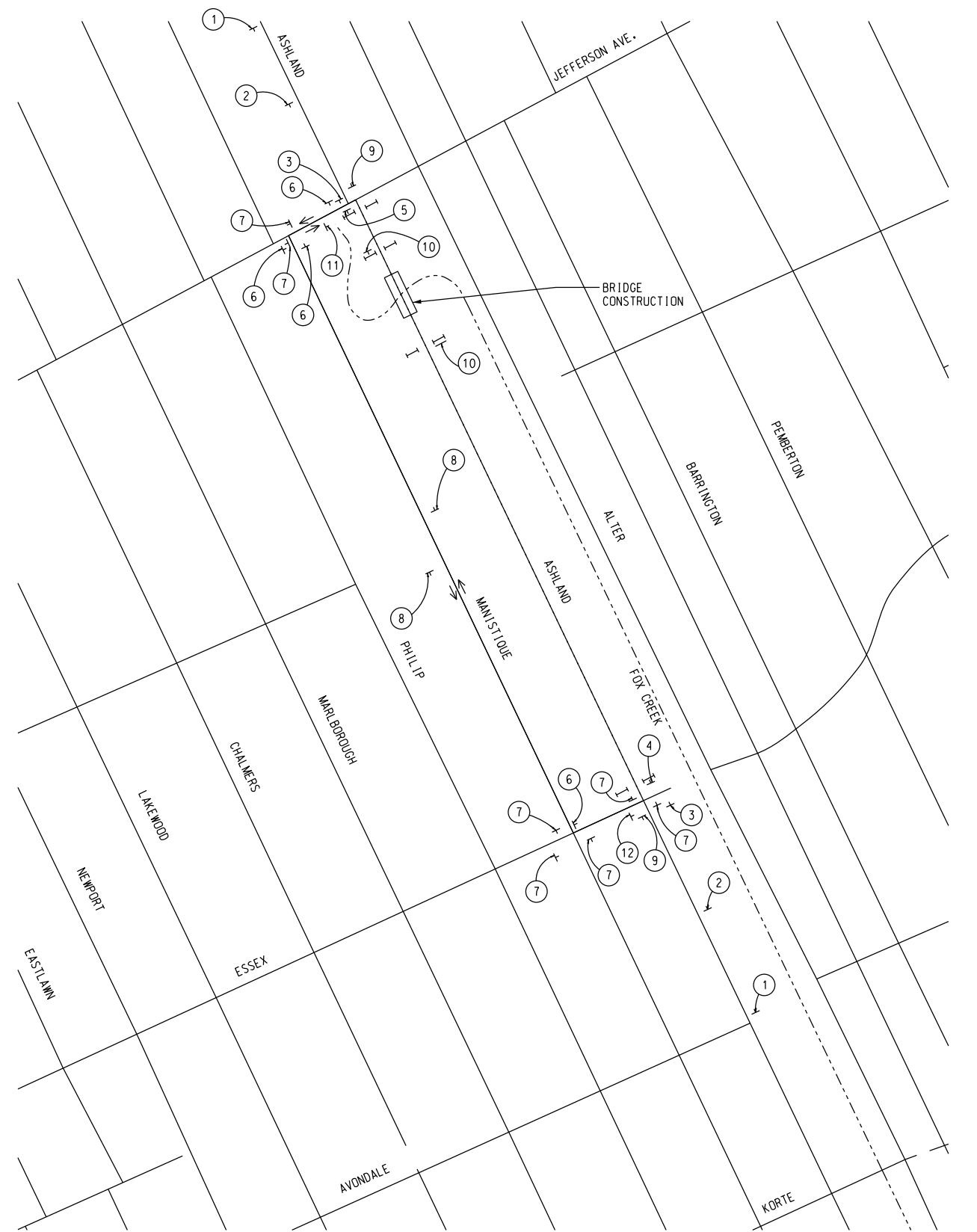
BAR	DIMENSIONS										NO. REQ'D	TOTAL MASS
	a	b	c	d	e	f	g	h	j			
EK1901905	705	140	140	215							1	4
EK1901993	749	140	140	215							1	4
EK1902013	759	140	140	215							2	9
EK1902113	809	140	140	215							2	9
EK1902133	819	140	140	215							1	5
EK1902137	821	140	140	215							1	5
EK1902141	823	140	140	215							1	5
EK1902243	874	140	140	215							1	5
EK1902263	884	140	140	215							1	5
EK1902271	888	140	140	215							1	5
EK1902279	892	140	140	215							1	5
EK1902387	946	140	140	215							1	5
EK1902405	955	140	140	215							1	5
EK1902419	962	140	140	215							1	5
EK1902431	968	140	140	215							1	5
EK1902543	1024	140	140	215							1	6
EK1902561	1033	140	140	215							1	6
EK1902577	1041	140	140	215							1	6
EK1902597	1051	140	140	215							1	6
EK1902713	1109	140	140	215							1	6
EK1902727	1116	140	140	215							1	6
EK1902749	1127	140	140	215							1	6
EK1902765	1135	140	140	215							1	6
EK1902887	1196	140	140	215							1	6
EK1902907	1206	140	140	215							1	6
EK1902931	1218	140	140	215							1	7
EK1902933	1219	140	140	215							1	7
EK1903059	1282	140	140	215							1	7
EK1903099	1302	140	140	215							1	7
EK1903101	1303	140	140	215							1	7
EK1903129	1317	140	140	215							1	7
EK1903231	1368	140	140	215							1	7
EK1903265	1385	140	140	215							2	15
EK1903299	1402	140	140	215							1	7
EK1903335	1420	140	140	215							1	7
EK1903399	1452	140	140	215							2	15
EK1903499	1502	140	140	215							1	8
EK1903539	1522	140										

MISCELLANEOUS QUANTITIES		
ITEM	UNIT	AMOUNT
BARRICADE, TYPE III, LIGHTED, OPER	ea	8
BARRICADE, TYPE III, LIGHTED, FURN	ea	8
PLASTIC DRUM, LIGHTED, FURN	ea	20
PLASTIC DRUM, LIGHTED, OPER	ea	20
SIGN, TYPE B, TEMPORARY, PRISMATIC RETROREFLECTIVE SHEETING	m2	26.8
PAVT MRKG, REGULAR DRY, 100 mm, WHITE	m	100
PAVT MRKG, REGULAR DRY, 100 mm, YELLOW	m	100
* CONCRETE BARRIER, TEMPORARY, FURNISHED	m	36.5
* CONCRETE BARRIER, TEMPORARY, OPERATED	m	36.5
MINOR TRAFFIC DEVICES	LS	1

* CONCRETE BARRIER, TEMPORARY IS TO BE PLACED BEHIND TYPE III BARRICADES.

SIGN TYPE LEGEND	
△	SIGN, TYPE B
⇄	TYPE III BARRICADE

SIGN CHART				
I.D. NUMBER	SIGN	SIGN DESIGNATION	SIZE	NUMBER REQUIRED
1		W20-3	1200X1200	2
2		W20-2	1200X1200	2
3		W20-3	1200X1200	2
4		R11-4 M4-10	1500X750 1200X450	1
5		R11-4 M4-10	1500X750 1200X450	1
6		D3-1 M4-9	1200X300 750X600	4
7		D3-1 M4-9	1200X300 750X600	8
8		D3-1 M4-9	1200X300 750X600	2
9		M4-8a	600X450	2
10		R11-2	1200X750	2
11		D3-1 M6-1b	1200X300 525X375	1
12		D3-1 M6-1b	1200X300 525X375	1



NOTES:

THE CONTRACTOR WILL FURNISH AND ERECT THE SIGNS LISTED ON THE SIGN CHART AT THE LOCATIONS SHOWN.

AS DIRECTED BY THE ENGINEER, THE CONTRACTOR SHALL PROVIDE AND MAINTAIN ANY ADDITIONAL SIGNS, BARRICADES AND LIGHTS WITHIN THE PROJECT TO PROTECT THE TRAFFIC AND WORK AREA.

THE CONTRACTOR SHALL PLACE SANDBAGS ON BARRICADES TO PREVENT MOVEMENT OF THE BARRICADES. THE CONTRACTOR SHALL ATTACH AND MAINTAIN THREE (3) STEADY BURN AMBER LIGHTS (TYPE "C") ON EACH OF THE BARRICADES.

THE CONTRACTOR SHALL ATTACH AND MAINTAIN ONE (1) BATTERY OPERATED AMBER FLASHER LIGHTS (TYPE "A") AND ONE (1) ORANGE FLUORESCENT DAY-GLO FLAG ON EACH ADVANCE CONSTRUCTION SIGN (SIGNS ①, ② & ③).

TRAFFIC CONTROL SIGNS WHICH ARE REMOVED FROM THE VICINITY OF THE PROJECT DUE TO INTERFERENCE SHALL BE TURNED OVER TO THE CITY. UPON COMPLETION OF THE PROJECT, TRAFFIC CONTROL SIGNS AND STREET NAME SIGNS WILL BE RESET IN THEIR PROPER POSITION BY THE CONTRACTOR.

THE CONTRACTOR SHALL NOT BEGIN ANY OPERATIONS ON THE PROJECT UNTIL ALL OF THE SIGNS HAVE BEEN POSITIONED AND FLASHER LIGHTS AND FLAGS ARE ATTACHED TO ALL REQUIRED SIGNS AND BARRICADES.

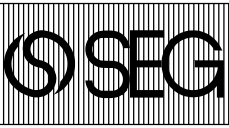
ANY OTHER SIGNS WHICH THE CONTRACTOR MAY BE REQUIRED TO FURNISH SHALL CONFORM TO THE MICHIGAN MANUAL OF UNIFORM TRAFFIC CONTROL DEVICES.

ALL CONSTRUCTION SIGNS SHALL CONFORM TO MDT 1996 STANDARD SPECIFICATIONS FOR CONSTRUCTION 812.02.B.1.

METRIC
DIMENSIONS ARE IN MILLIMETERS UNLESS OTHERWISE SHOWN. ELEVATIONS, COORDINATES, CURVE AND ALIGNMENT DATA ARE IN METERS. STATIONS ARE IN KILOMETERS + METERS.

REVISIONS	DATE	BY	DESCRIPTION

DSGN BY	C.D.P.	6-97
DR'N BY	R.J.D.	6-97
CK'D BY	R.G.W.	6-97
FINAL CK'D BY	M.D.W.	2-99
APP'D BY		



SNELL ENVIRONMENTAL GROUP, INC. • A DLZ Company
151 W. CONGRESS, SUITE 328
DETROIT, MICHIGAN 48226
TELEPHONE (313) 961-4040



CITY OF DETROIT
MICHIGAN

ASHLAND AVE.
OVER THE FOX CREEK
(BW-245)

DETOUR PLAN

SCALE	NOT TO SCALE
PROJECT NO.	9641-5160-03
SHEET NO.	A12 OF 19

FILE NAME: .JDN

