

CITY OF DETROIT
DEPARTMENT OF PUBLIC WORKS
CITY ENGINEER'S OFFICE
DEPARTMENT OF GRADE SEPARATION & BRIDGES
JEFFERSON AVE. BRIDGE
OVER
FOX CREEK

Harry L. Green
 CITY ENGINEER

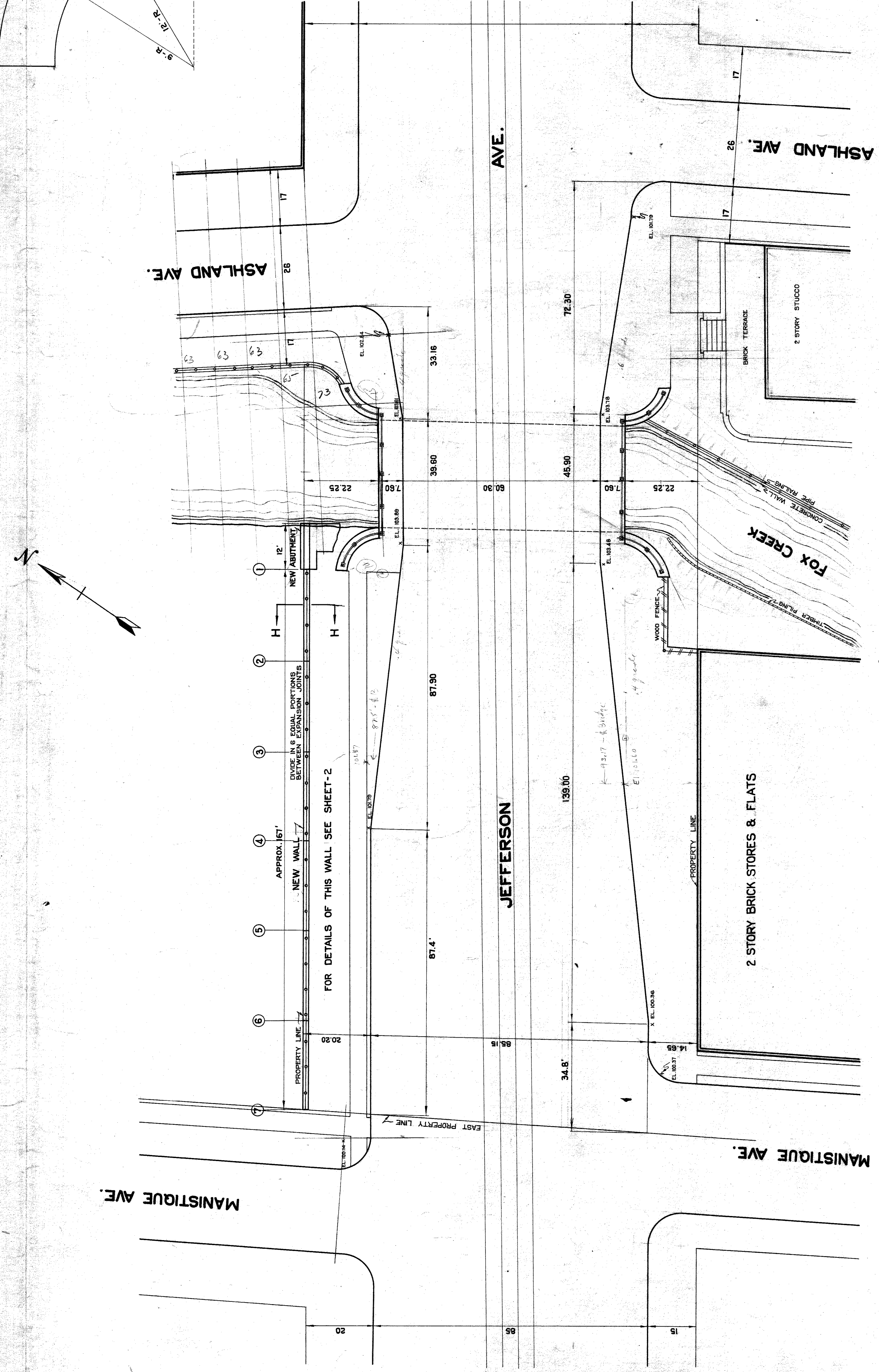
APPROVED

GENERAL PLAN
 JUNE 1928

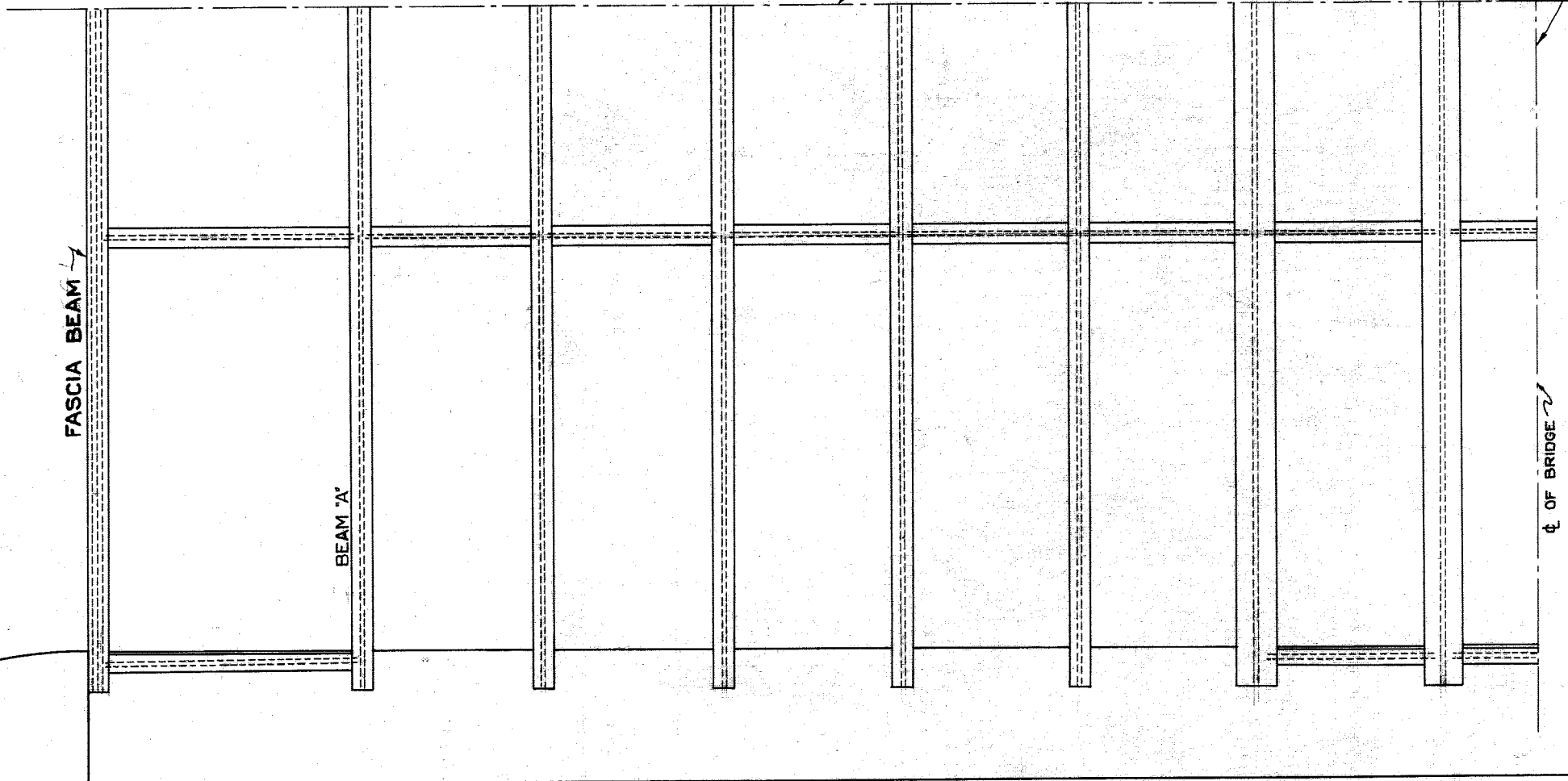
SCALES AS SHOWN
 DRAWN BY: R.S. 2/27/28
 CHECKED BY: R.S. 2/27/28
 TRACED BY: C.U.U.

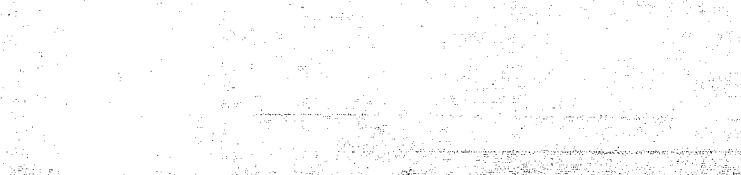
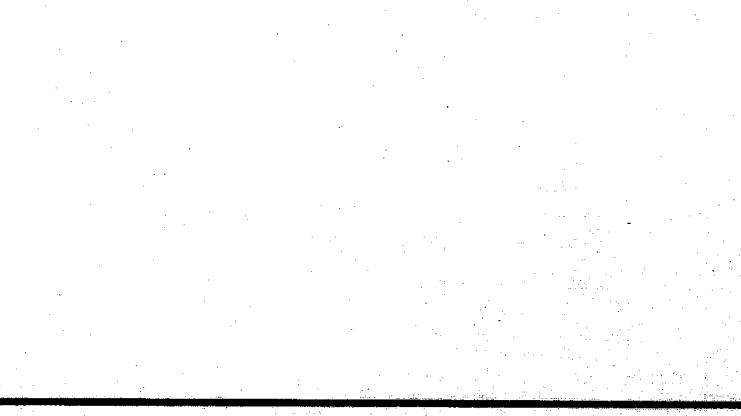
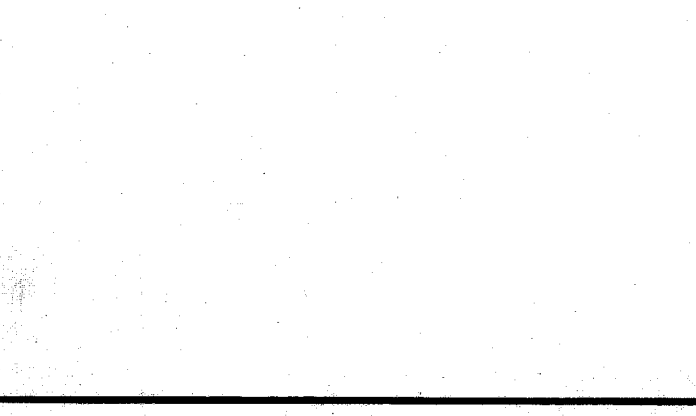
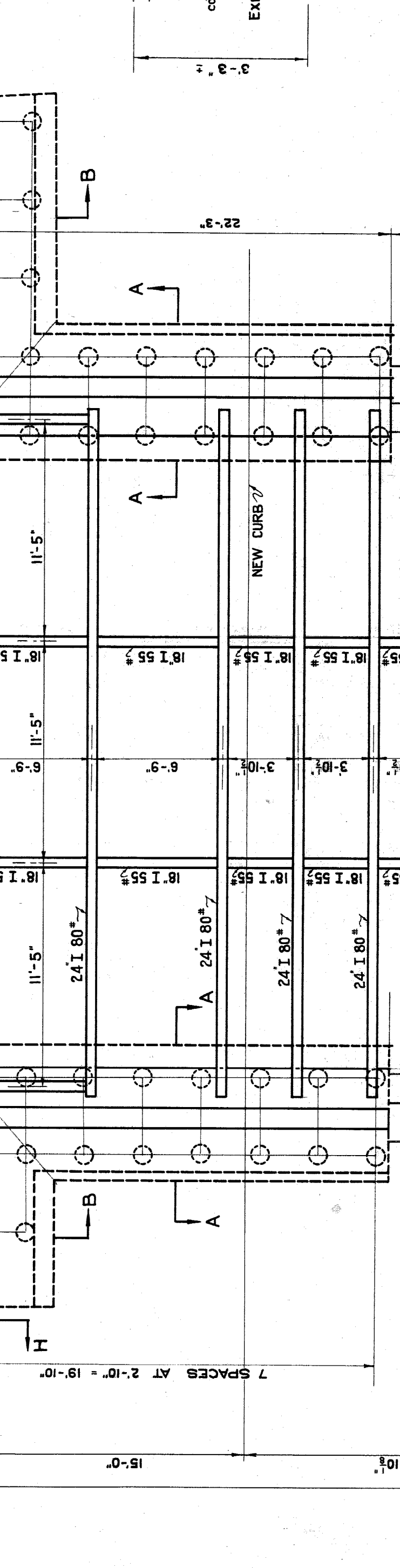
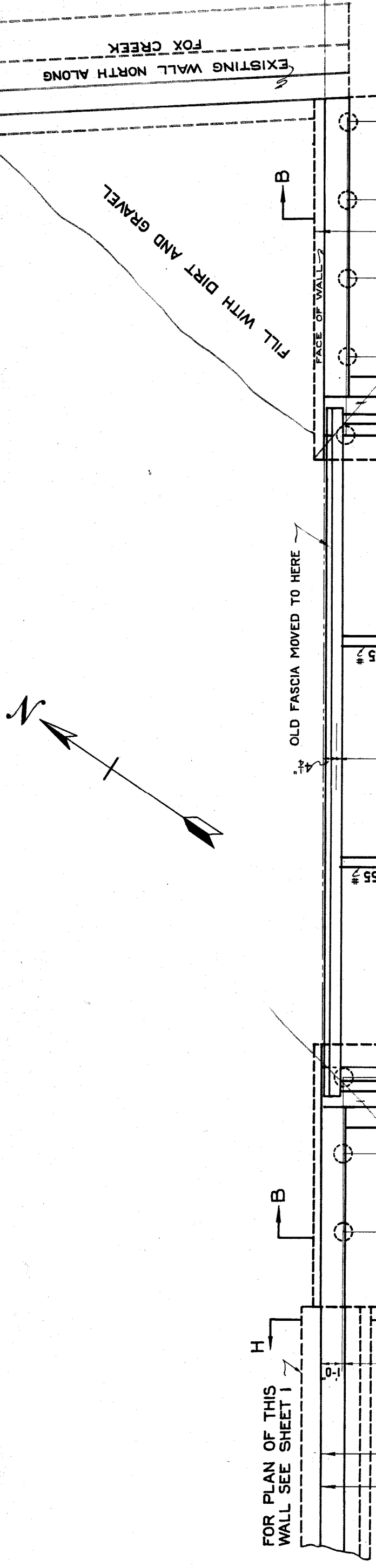
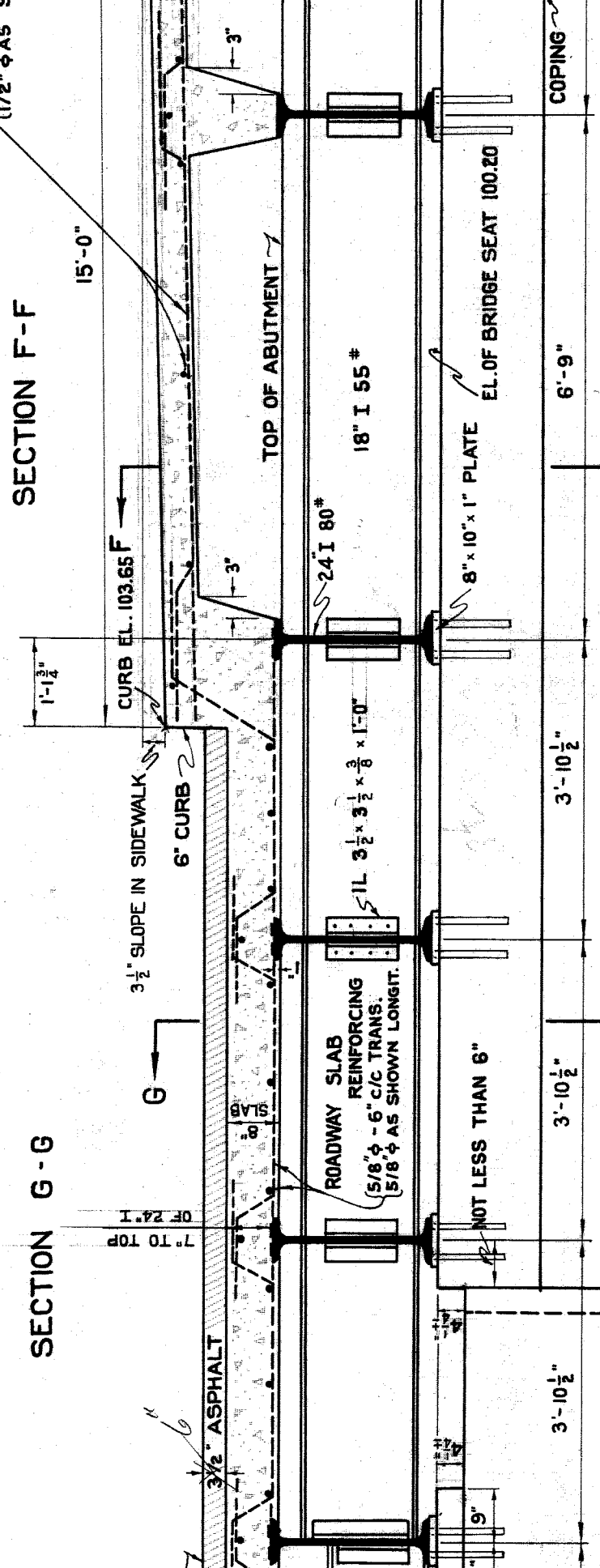
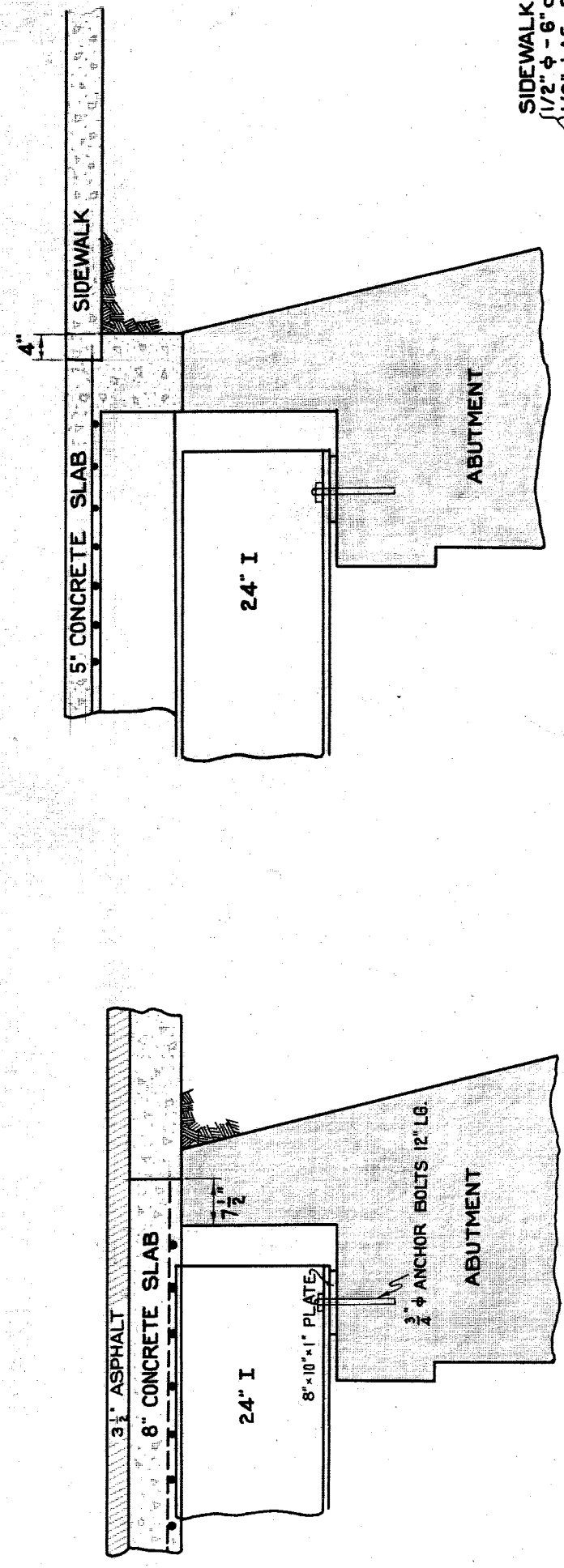
SHEET -1

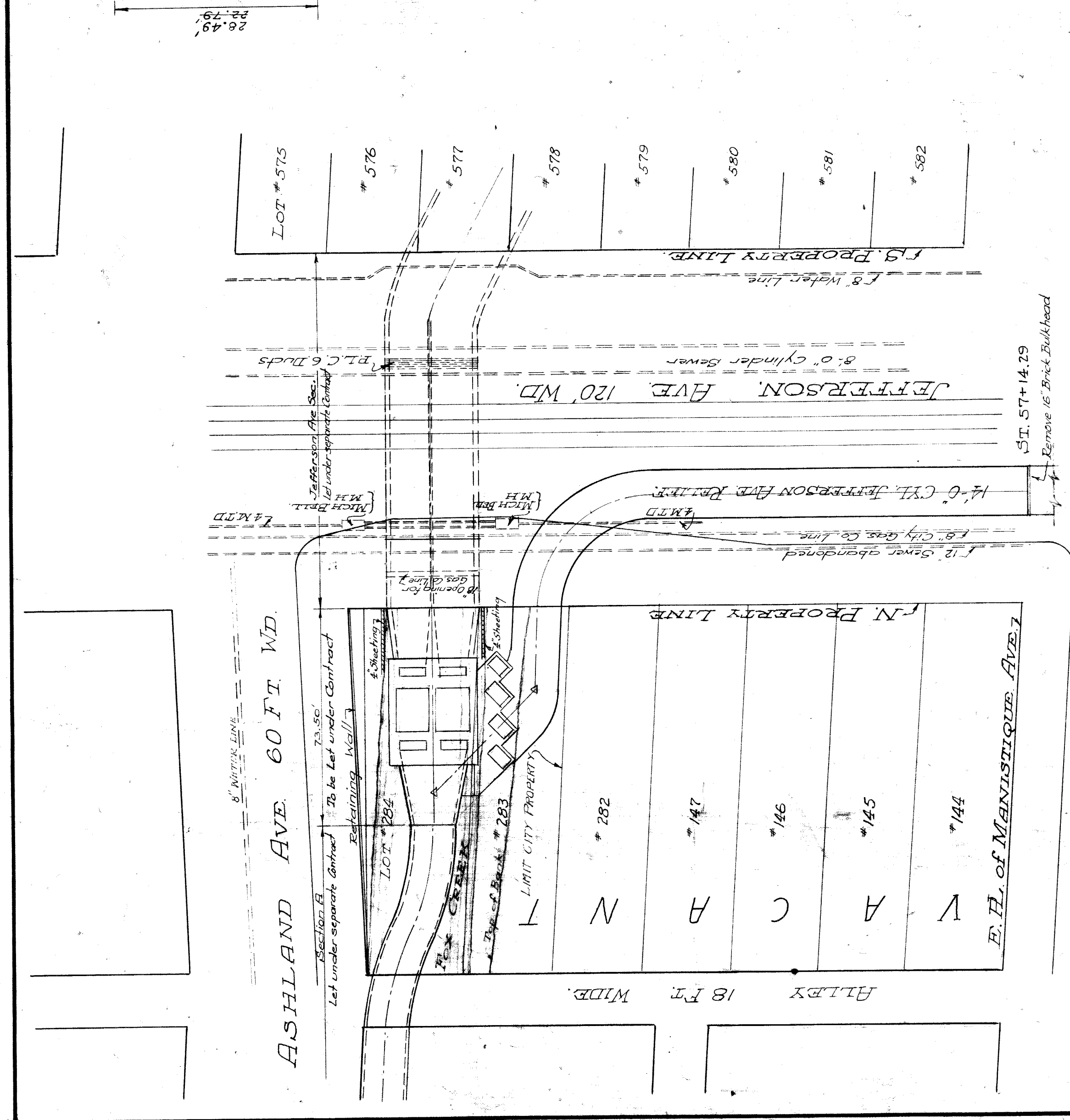
File BW43-1



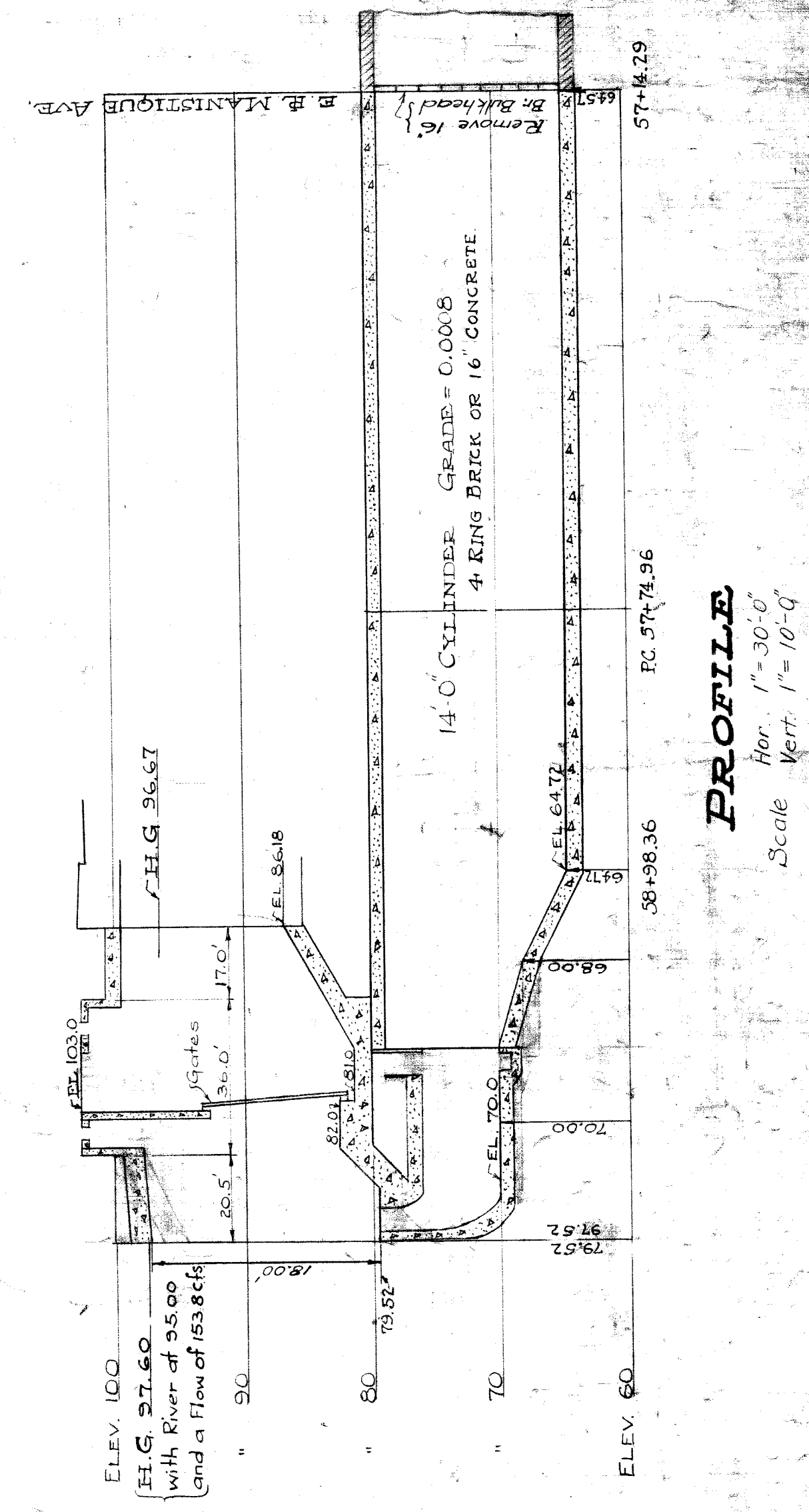
PLAN SHOWING EXISTING BRIDGE
 SCALE 1" = 20'



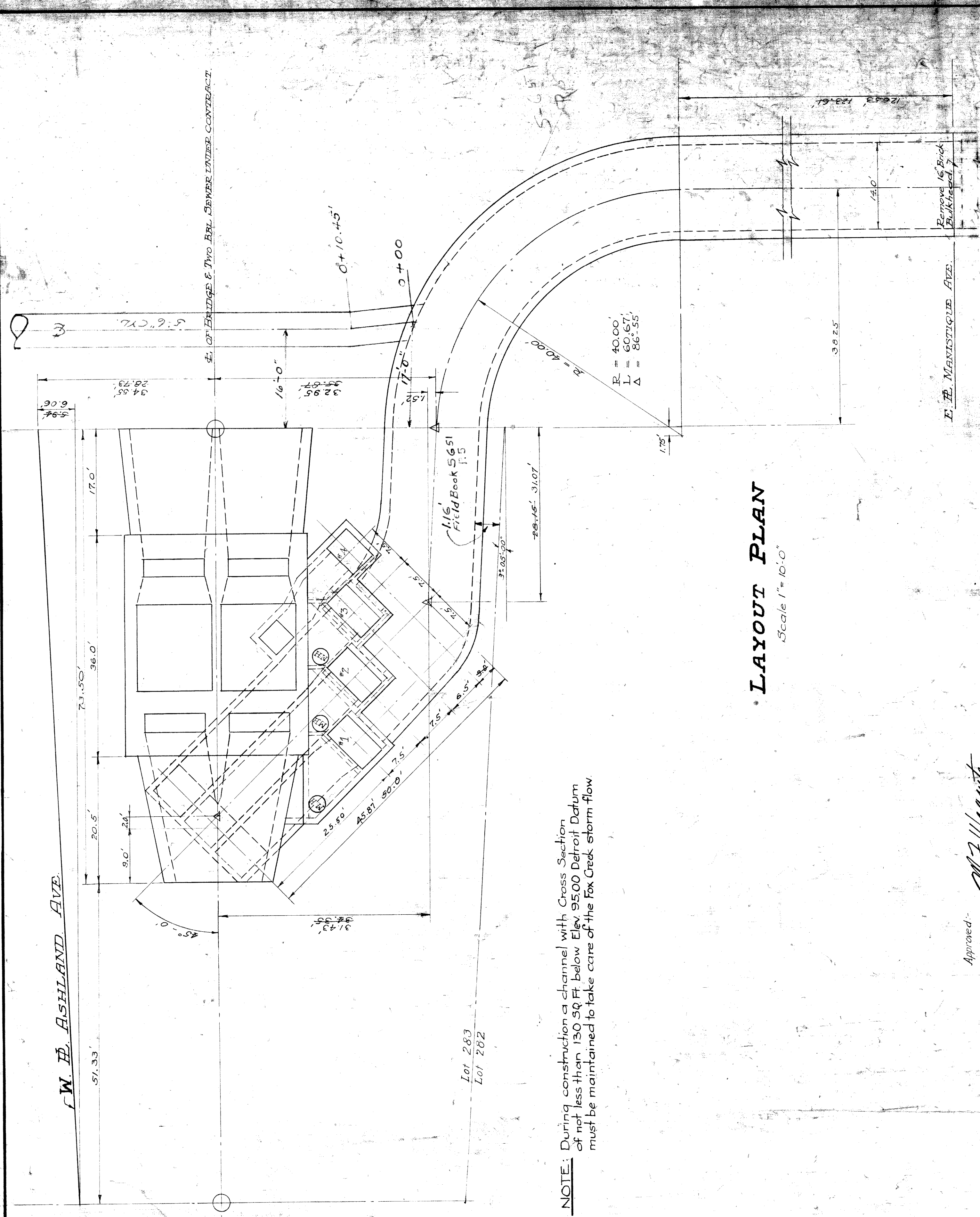




LOCATION PLAN
Scale 1"=30'-0"



PROFILE
Hor. 1"=30'-0"
Vert. 1"=10'-0"

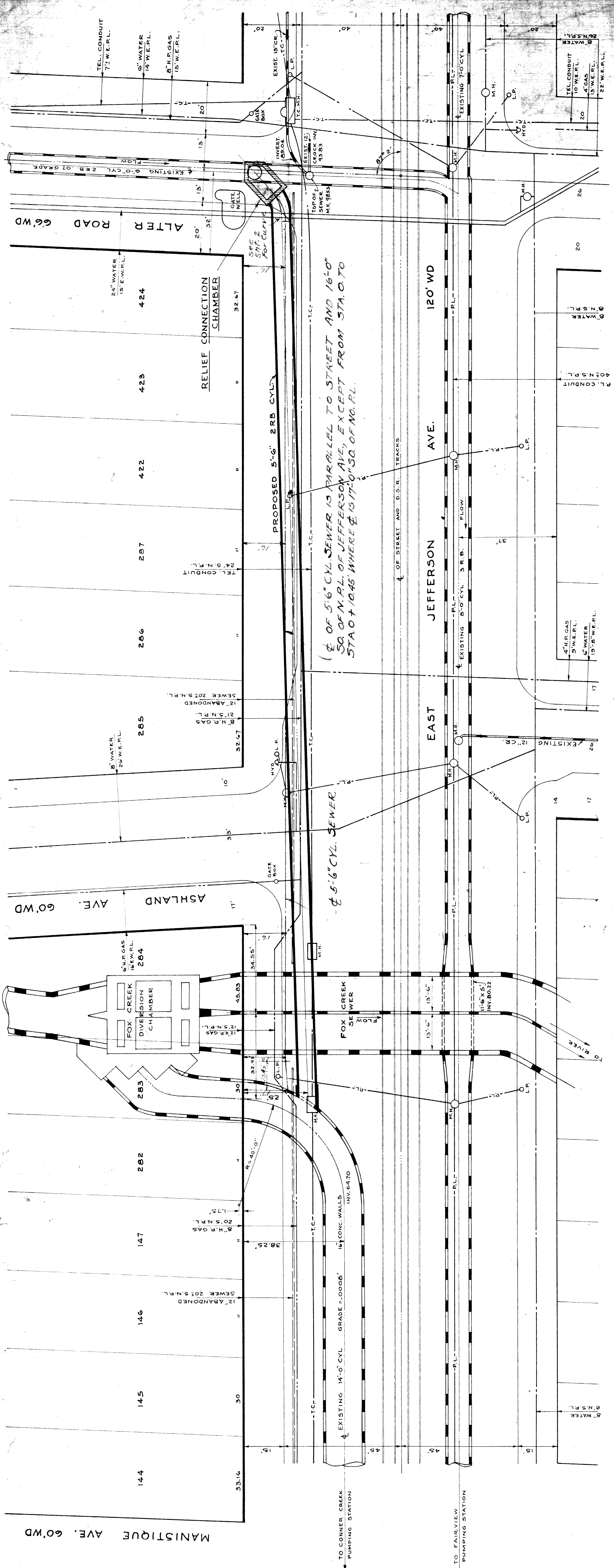


LAYOUT PLAN
Scale 1"=10'-0"

NOTE: During construction a channel with Cross Section of not less than 130 sq ft below Elev 95.00 Detroit Datum must be maintained to take care of the Fox Creek storm flow.

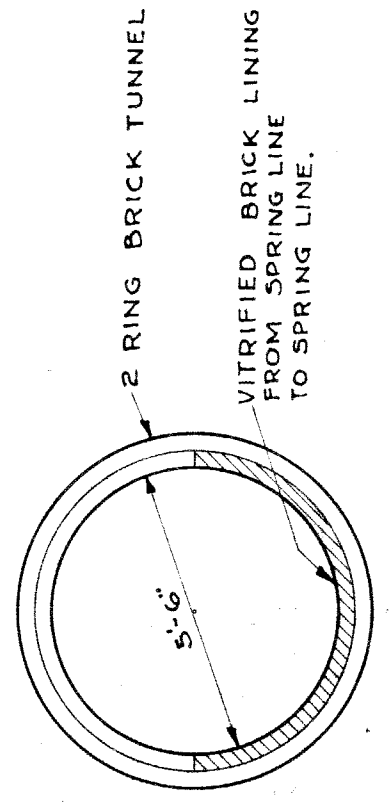
Approved: *M. F. Wagnath*
Engineer of Public Structures
Thru A. Williams
City Engineer

CITY OF DETROIT
DEPARTMENT OF PUBLIC WORKS
CITY ENGINEER'S OFFICE
FOX CREEK BACKWATER GATES
LOCATION PLAN
SCALES AS NOTED
DRAWN BY CFK
TRACED BY CFK
SHEET NO. 1 OF 10 SHEETS
MAY 1929
CHECKED BY

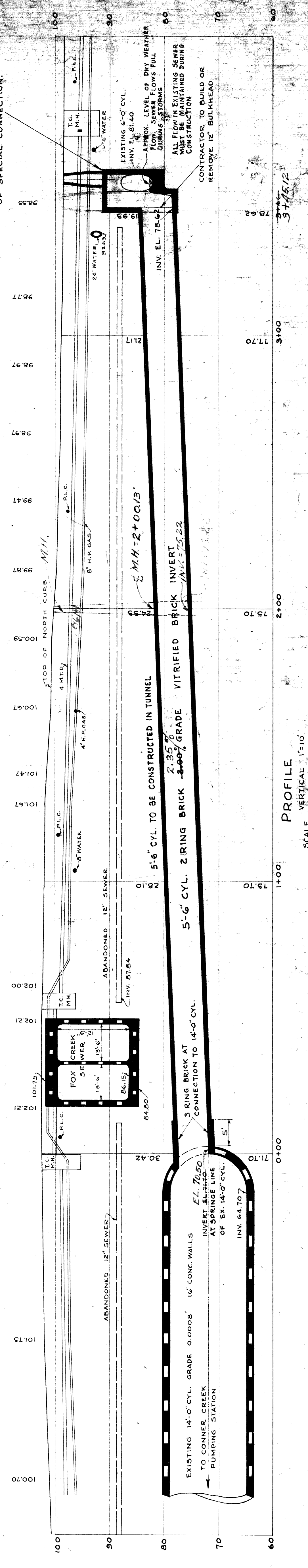


*This job was done in two parts
The Sewer built by D.P.M. is completed 4-25-38*

NOTE
THE 346'± OF 5'-6" CYLINDER TUNNEL SEWER
WILL BE BUILT BY THE D.P.W. SEWER MAINTENANCE DIVISION.



TYPICAL CROSS SECTION
SCALE 1"=40'



| | |
|-------------|--------------|
| DESIGNED BY | C. L. PALMER |
| DRAWN BY | J. E. EARL |
| CHECKED BY | J. E. EARL |
| APPROVED BY | J. W. ORTON |

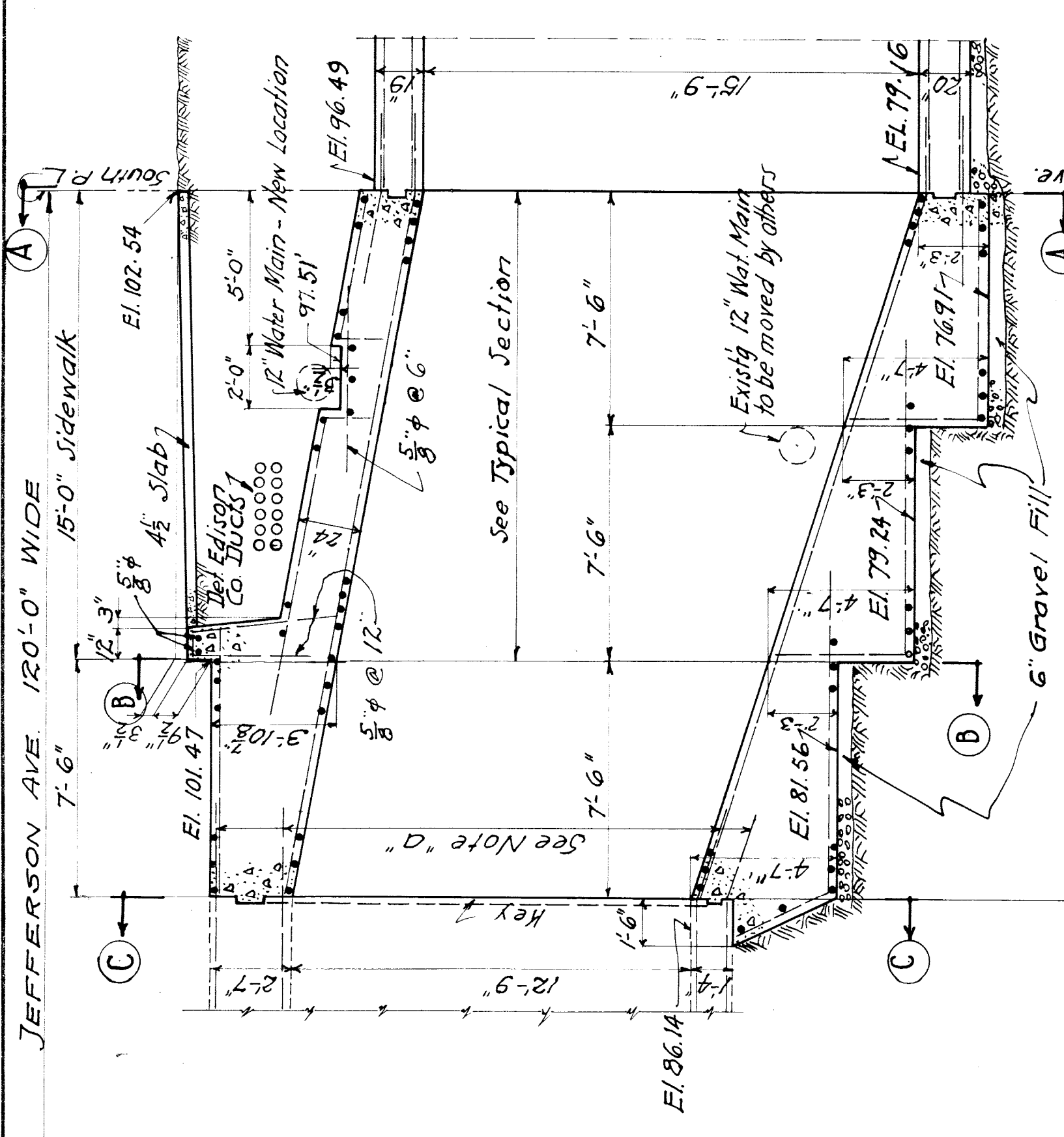
APPROVED
Arthur B. Merrill
CITY ENGINEER
M. F. Wagnery
SUPERVISOR OF PUBLIC WORKS
J. R. Thompson
ENGINEER

RELIEF CONNECTION
BETWEEN
6 FOOT ALTER ROAD SEWER
AND
14 FOOT JEFFERSON AVE. RELIEF SEWER
SEPT. 13, 1937.

CITY OF DETROIT
DEPARTMENT OF PUBLIC WORKS
ENGINEERING DIVISION

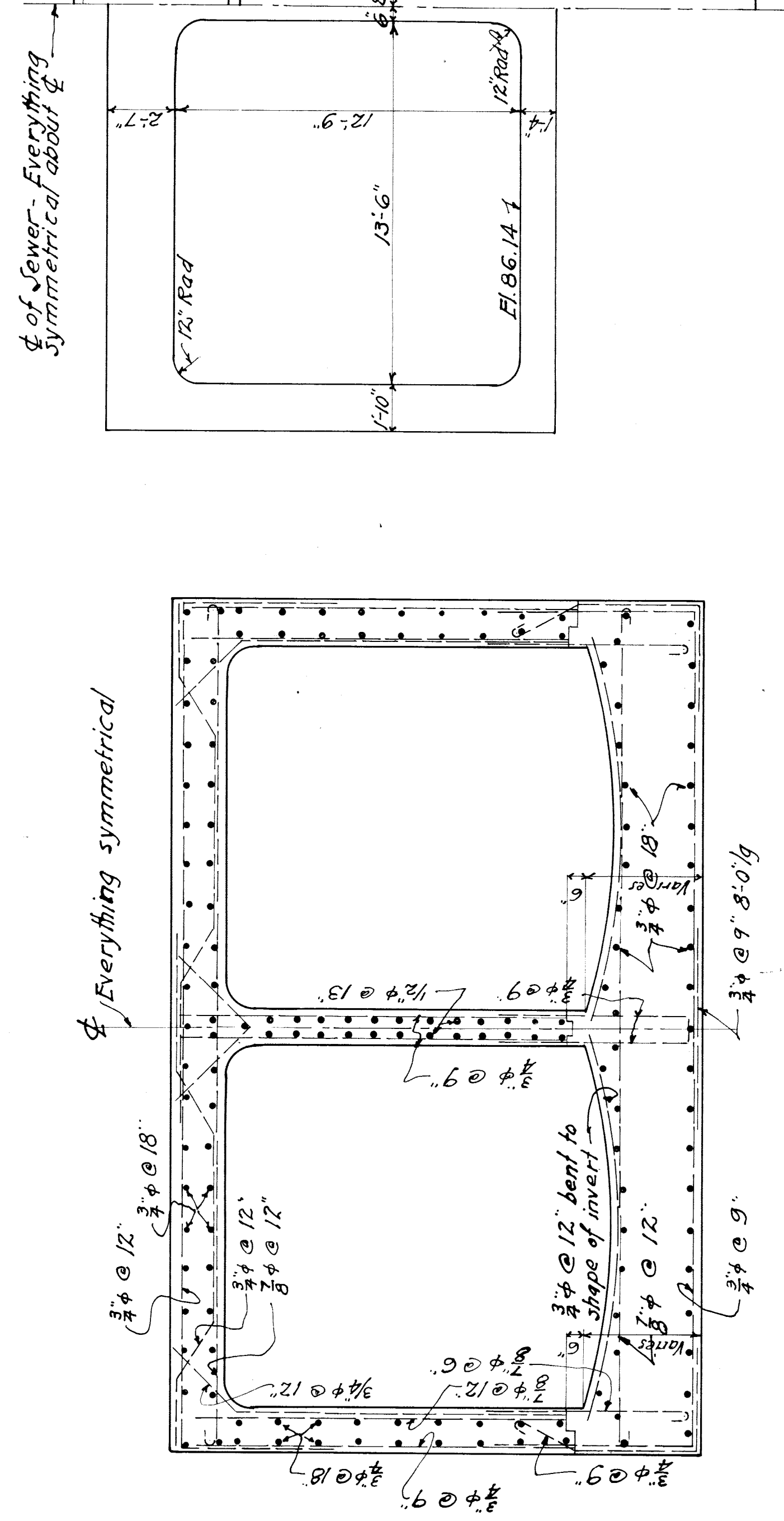
SHEET NO. 2 OF 2 SHEETS
CONTRACT E.S.F. 3
C-1515

300 SOUTH LIVERMORE AVENUE

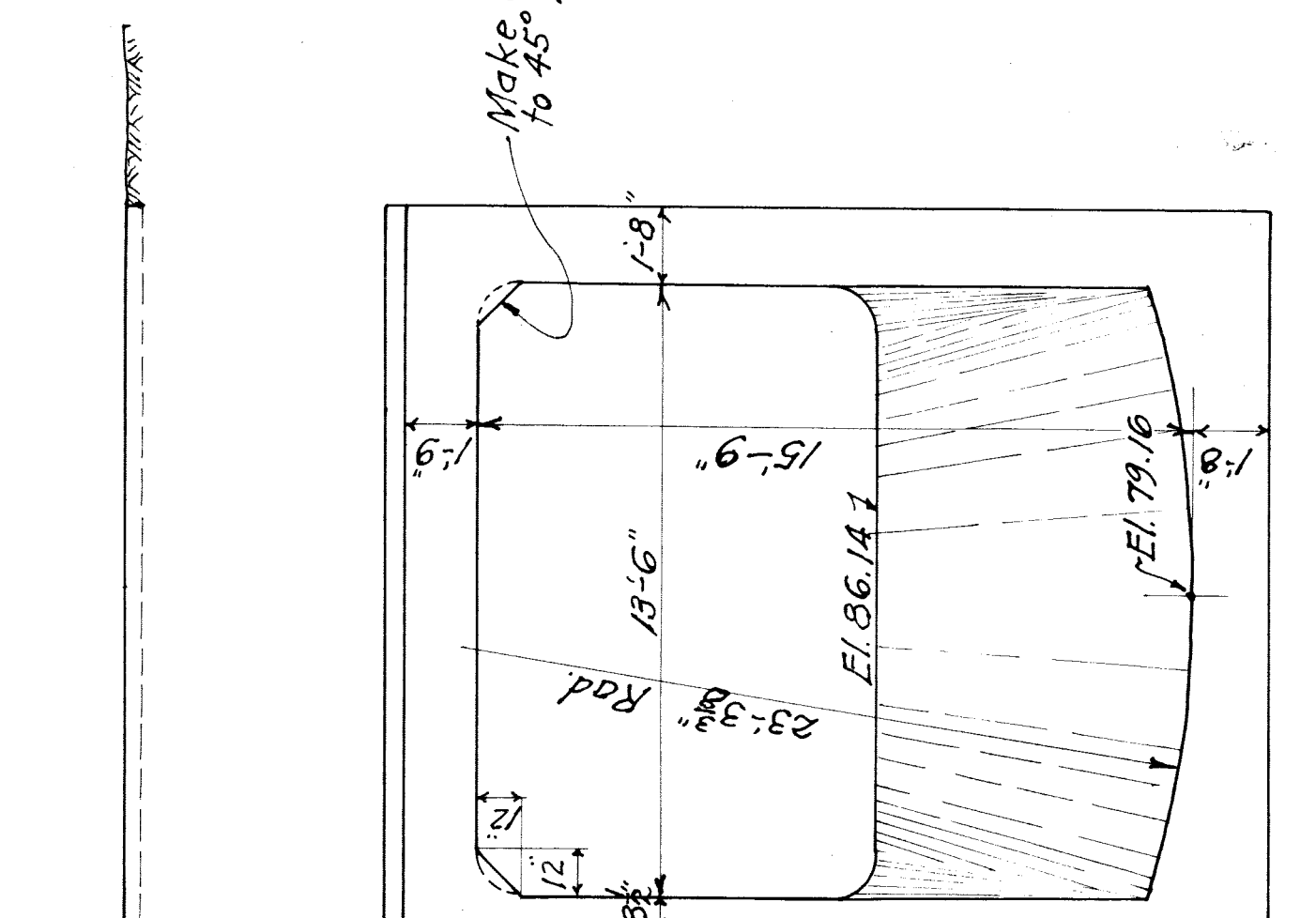


Note "a"
About 93-5/8" bars in existing sewer to be cut 25" or more beyond face to form a splice. Weld on piece if less than 25" remains. Cut suitable key in existing sewer face.

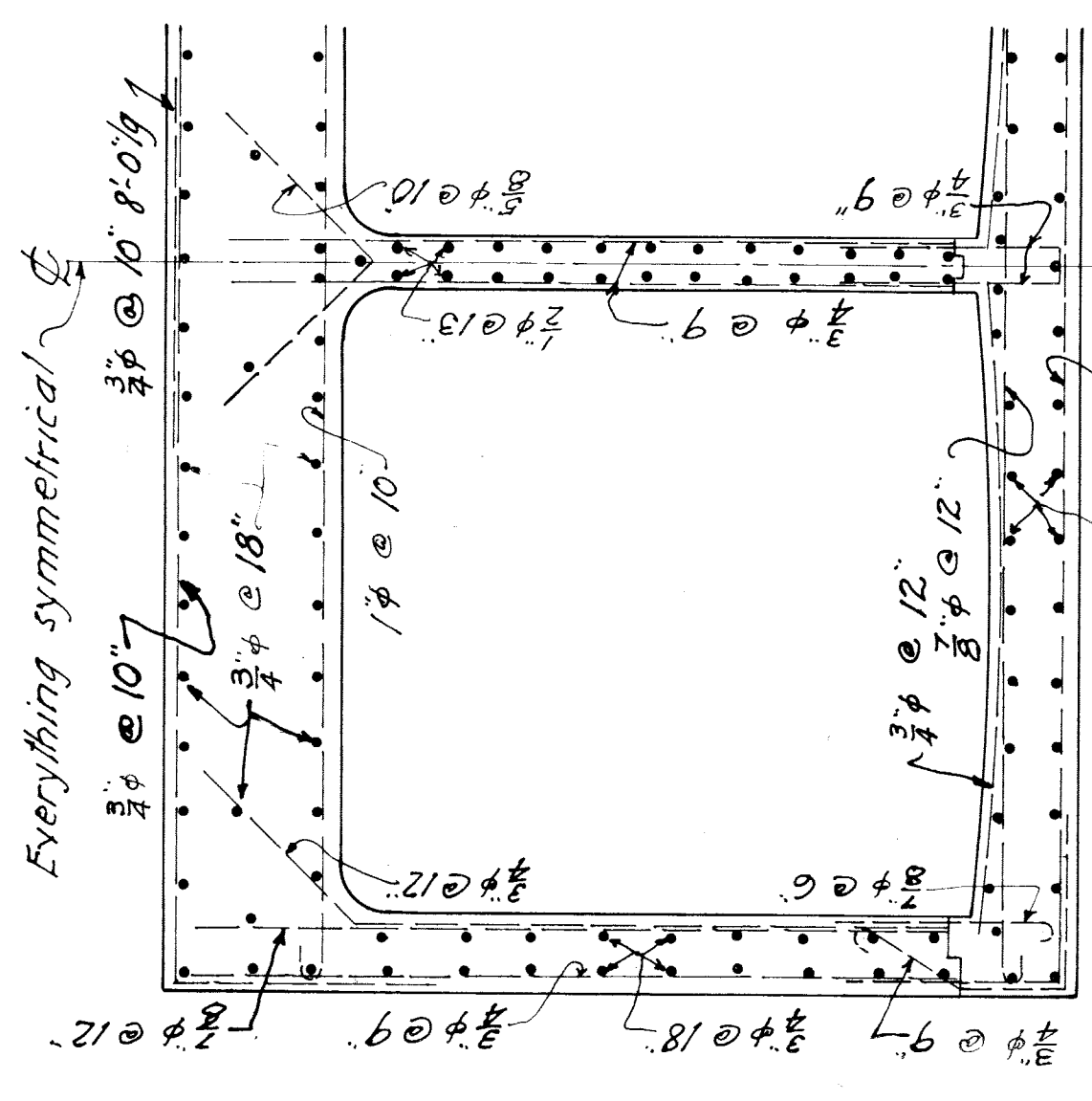
SECTION ON & OF INVERT



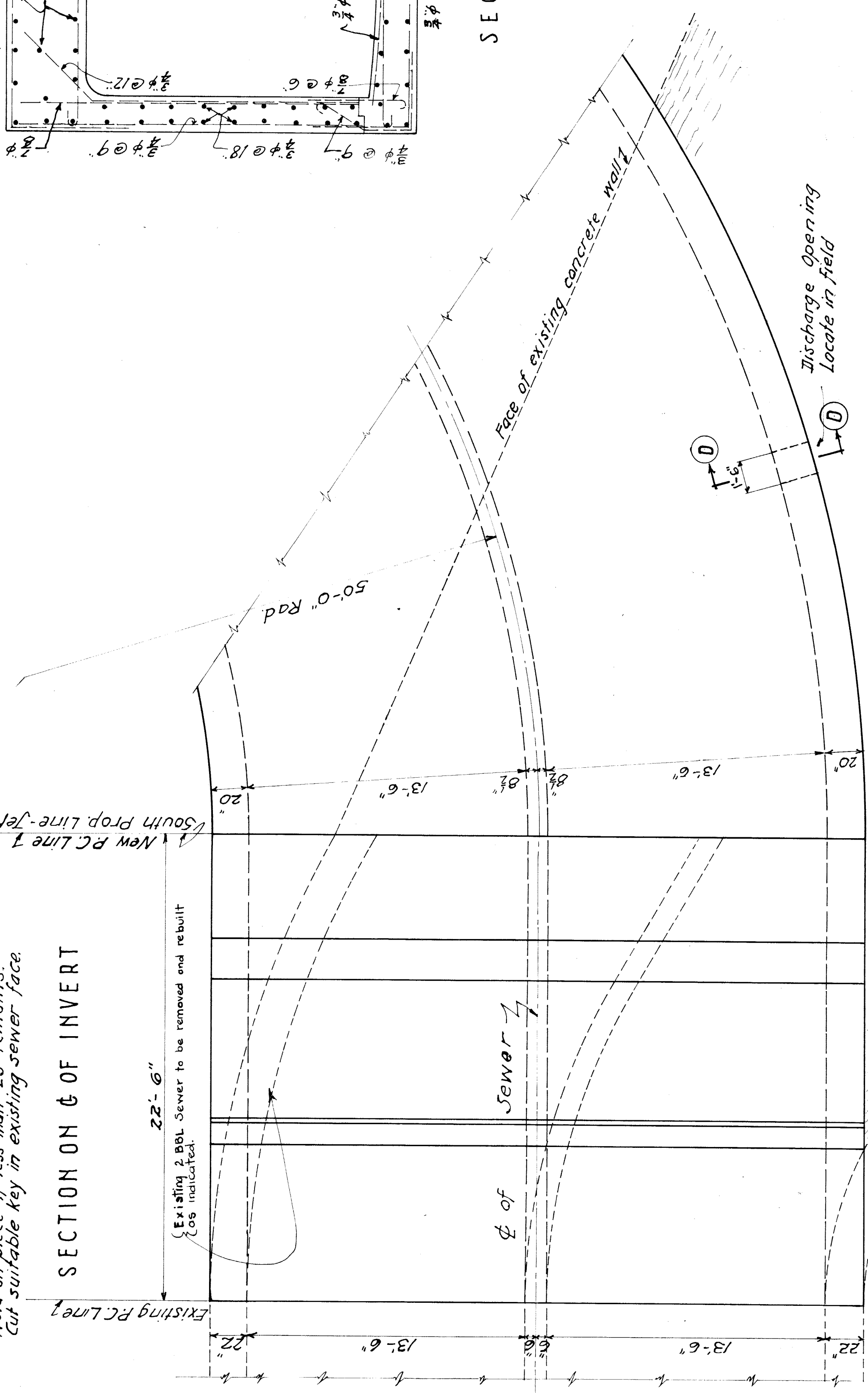
TYPICAL SECTION



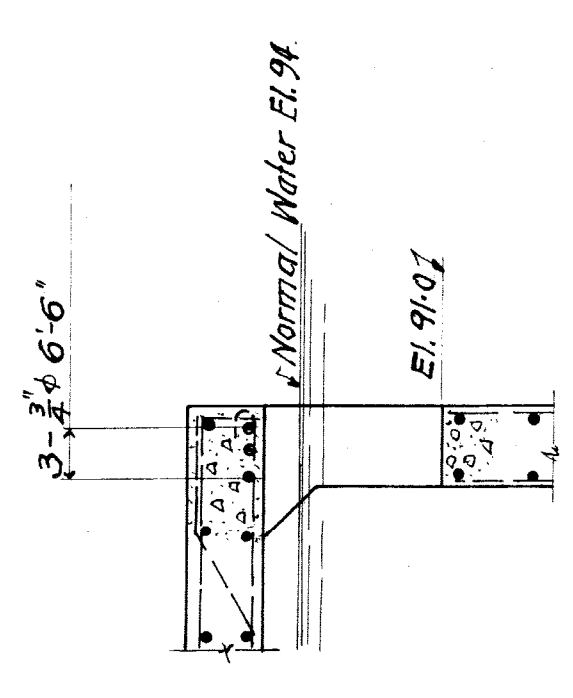
HALF SECTION C-C



SECTION B-B



PLAN



SECTION D-D

| | | | |
|---|-------------|-------------------------------|-------------------------------------|
| CITY OF DETROIT DEPARTMENT OF PUBLIC WORKS CITY ENGINEERS OFFICE BUREAU OF PUBLIC STRUCTURES | | SHEET 5 OF 6 SHEETS | |
| FOX CREEK SEWER SECTION 1 JUNCTION AT JEFFERSON | | CONTRACT | |
| Scale - 1/4" = 1'-0" | | DRWG NO. | |
| DESIGNED BY | R. SCHULHOF | APPROVED | <i>C. Woodward</i> CITY ENGINEER |
| DRAWN BY | R. SCHULHOF | ASSISTANT CIVIL ENGINEER | <i>M. F. Wagner</i> |
| TRACED BY | R. SCHULHOF | ENGINEER OF PUBLIC STRUCTURES | <i>G. W. Thompson</i> |
| CHECKED BY | C. WOODWARD | CITY ENGINEER | |
| DESCRIPTION | | DATE | |
| REVISIONS | | | |

