

REVISED	DATE	BY	REVISIONS

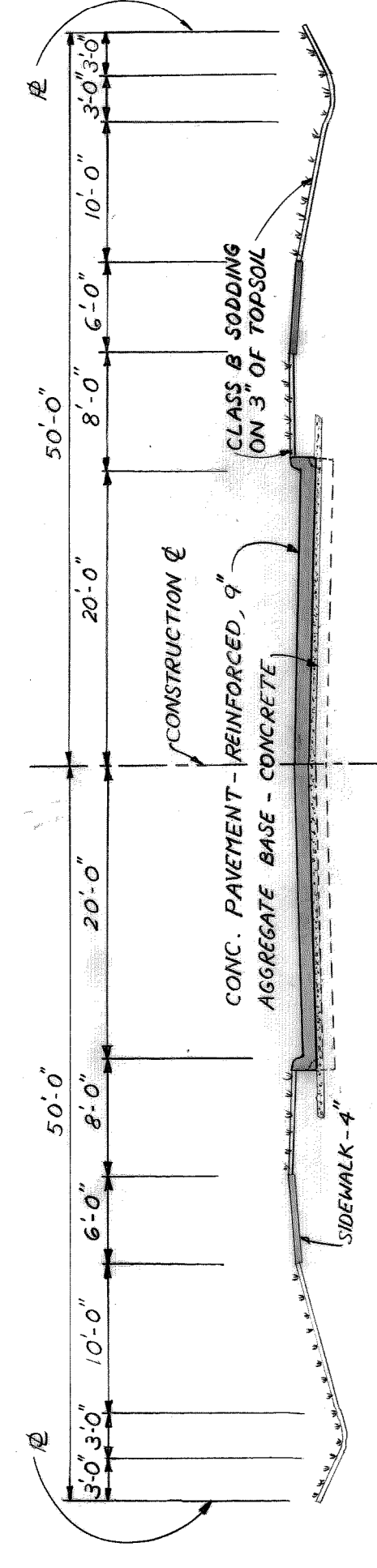
designed by  
 drawn by J.J.  
 checked by  
 approved:

**CITY OF DETROIT**  
 city engineering department  
 for D P W

BRIDGE RECONSTRUCTION  
 RIVERSIDE AVENUE OVER CANAL  
 BW 242

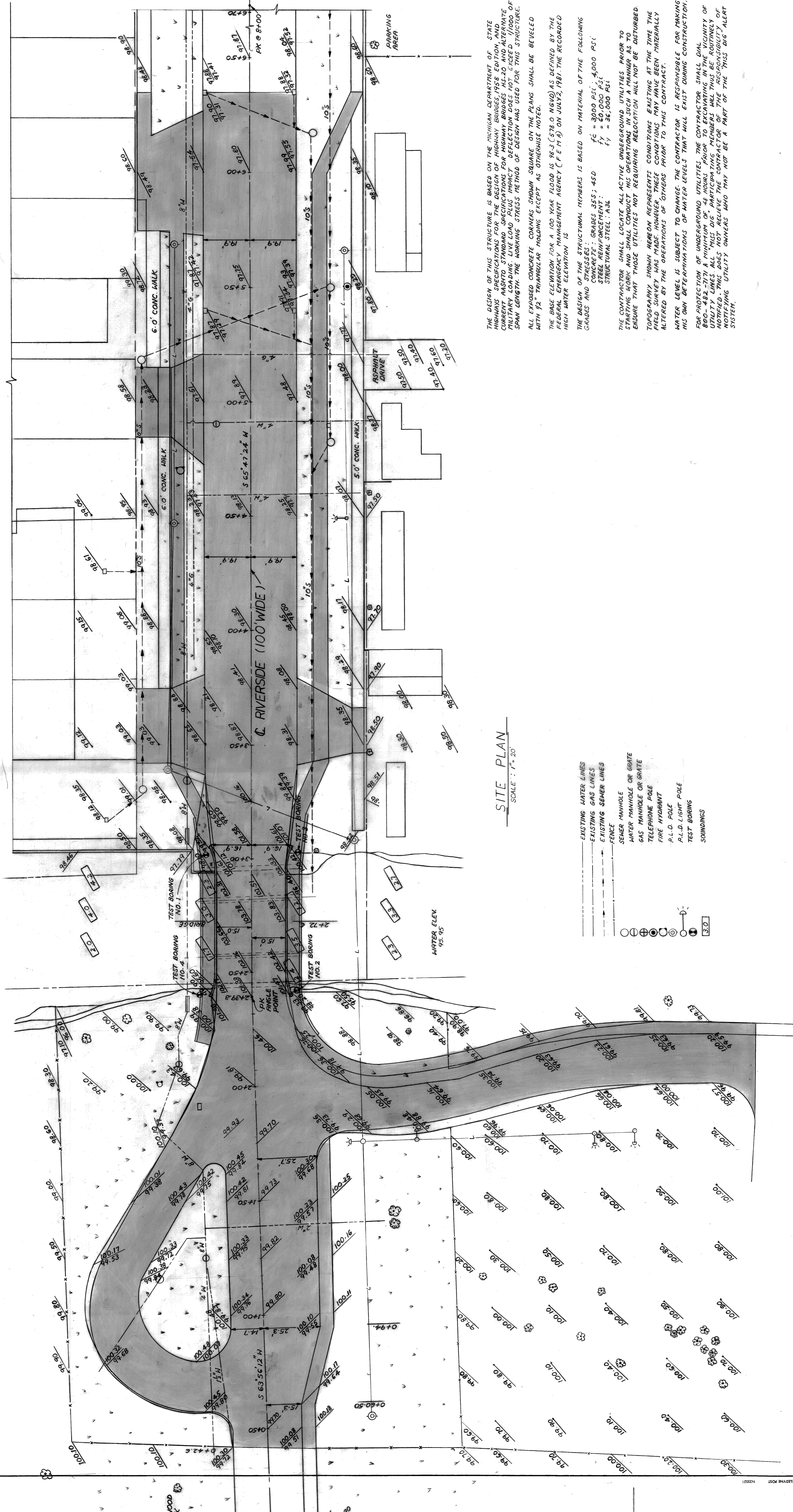
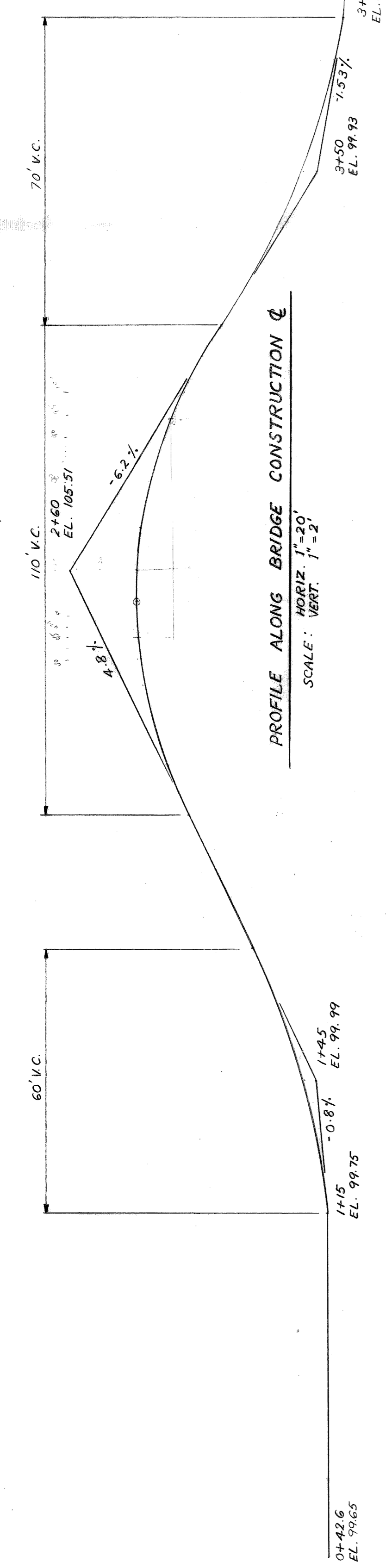
GENERAL PLAN OF SITE

a.o. 85-33-46  
 contract no.  
 sheet of  
 drawing no.  
 date



RIVERSIDE AVENUE APPROACH  
 SCALE: 3/32" = 1'-0"

PROFILE ALONG BRIDGE CONSTRUCTION  
 SCALE: HORIZ. 1" = 20'  
 VERT. 1" = 2'



SITE PLAN  
 SCALE: 1" = 20'

- EXISTING WATER LINES
- EXISTING GAS LINES
- EXISTING SEWER LINES
- FENCE
- SEWER MANHOLE OR GRATE
- GAS MANHOLE OR GRATE
- TELEPHONE POLE
- FIRE HYDRANT
- P.L.D. POLE
- P.L.D. LIGHT POLE
- TEST BORING
- SOUNDINGS

THE DESIGN OF THIS STRUCTURE IS BASED ON THE MICHIGAN DEPARTMENT OF HIGHWAY CONSTRUCTION SPECIFICATIONS FOR HIGHWAY BRIDGES AS TO CURRENT ASBESTO STANDARD SPECIFICATIONS FOR HIGHWAY BRIDGES AS TO MILITARY LOADING. LIVE LOAD PLUS IMPACT DEFLECTION DOES NOT EXCEED 1/1000 OF SPAN LENGTH. THE WORKING STRESS METHOD OF DESIGN WAS USED FOR THIS STRUCTURE. ALL EXPOSED CONCRETE CORNERS SHOWN SQUARE ON THE PLANS SHALL BE BEVELED WITH 1/2" TRIANGULAR MOLDING EXCEPT AS OTHERWISE NOTED.

THE BASE ELEVATION FOR A 100 YEAR FLOOD IS 98.3 (STR.0 NGVD) AS DEFINED BY THE FEDERAL EMERGENCY MANAGEMENT AGENCY (FEMA) ON JULY 2, 1987. THE RECORDED HIGH WATER ELEVATION IS 98.0.

THE DESIGN OF THE STRUCTURAL MEMBERS IS BASED ON MATERIAL OF THE FOLLOWING GRADES AND STRESSES:  
 CONCRETE: GRADES 35S; 45D  
 STEEL: A36; A572-50  
 STRUCTURAL STEEL: A36

THE CONTRACTOR SHALL LOCATE ALL ACTIVE UNDERGROUND UTILITIES PRIOR TO STARTING WORK AND SHALL CONDUCT HIS OPERATIONS IN SUCH A MANNER AS TO ENSURE THAT THOSE UTILITIES NOT REQUIRING RELOCATION WILL NOT BE DISTURBED. TOPOGRAPHY SHOWN HEREON REPRESENTS CONDITIONS EXISTING AT THE TIME THE FIELD SURVEY WAS MADE. HOWEVER, THESE CONDITIONS MAY HAVE BEEN MATERIALLY ALTERED BY THE OPERATIONS OF OTHERS PRIOR TO THIS CONTRACT. WATER LEVEL IS SUBJECT TO CHANGE. THE CONTRACTOR IS RESPONSIBLE FOR MAKING HIS OWN DETERMINATIONS OF WATER LEVELS THAT WILL EXIST DURING CONSTRUCTION. FOR PROTECTION OF UNDERGROUND UTILITIES, THE CONTRACTOR SHALL LOCATE ALL UTILITIES TO A MINIMUM OF 48 HOURS PRIOR TO EXCAVATING IN THE VICINITY OF THE BRIDGE. THE CONTRACTOR SHALL BE RESPONSIBLE FOR NOTIFYING UTILITY OWNERS WHO MAY NOT BE A PART OF THE "THIS DIG" ALERT SYSTEM.

DESIGNED BY	DATE
DRAWN BY	DATE
CHECKED BY	DATE
APPROVED BY	DATE

designed by  
 drawn by  
 checked by  
 approved:

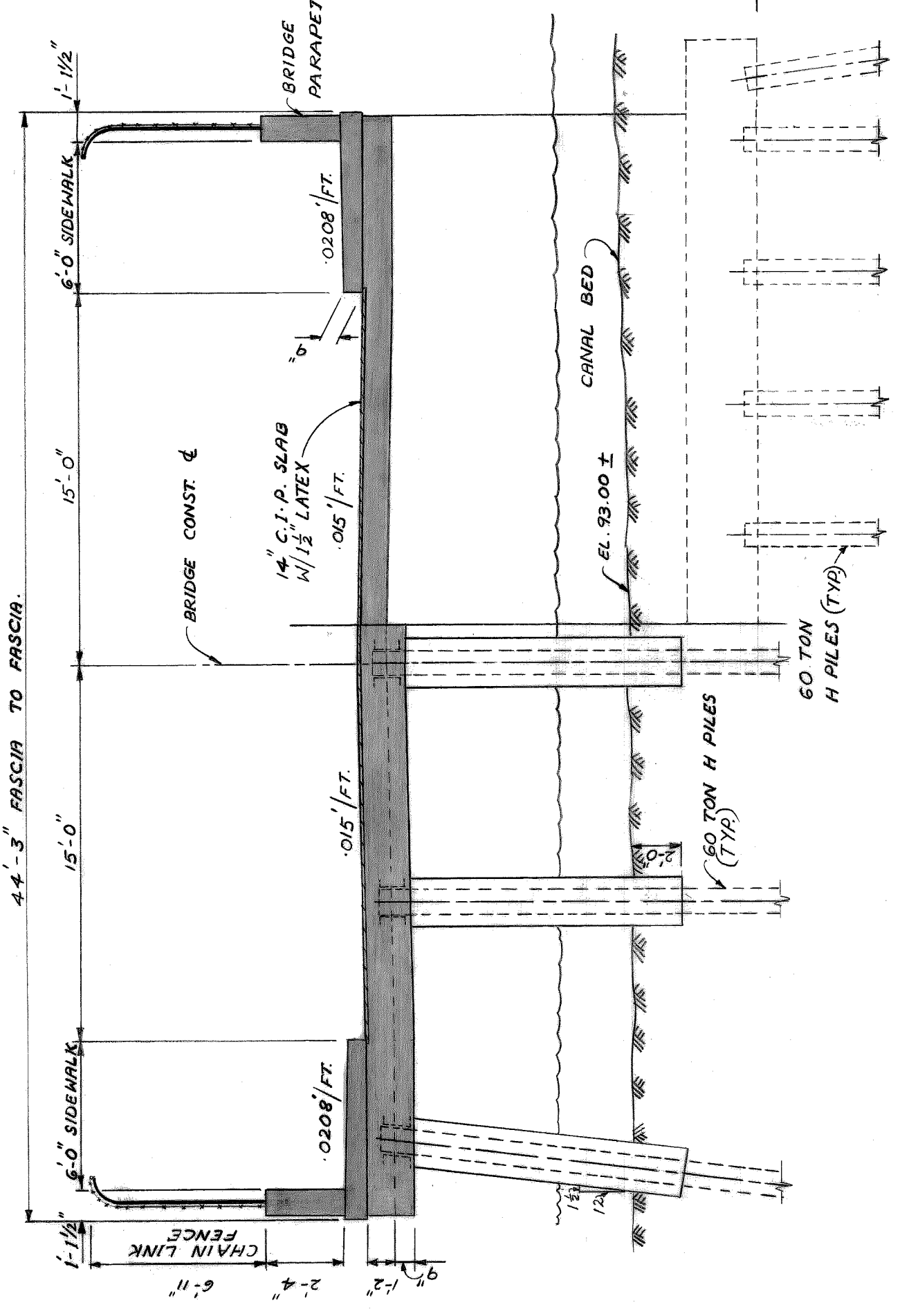
**CITY OF DETROIT**  
 city engineering department  
 for DPW

BRIDGE RECONSTRUCTION.

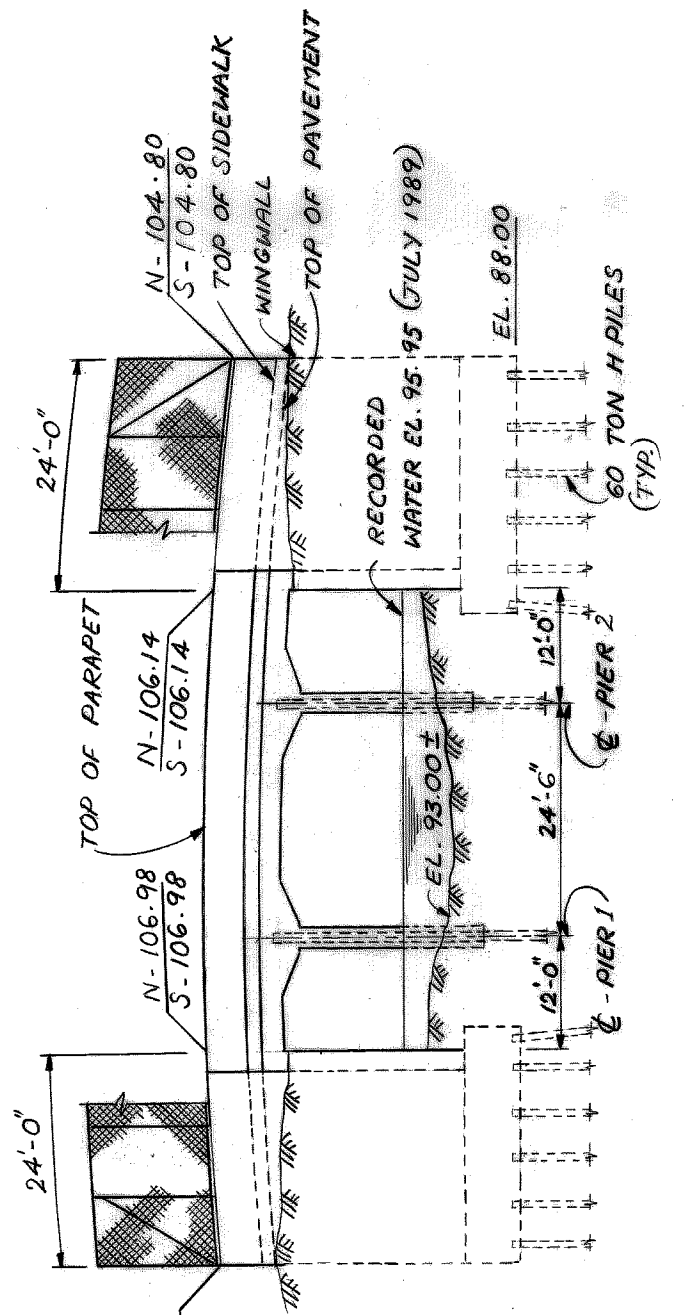
RIVERSIDE AVENUE OVER CANAL  
 BW - 242

GENERAL PLAN OF STRUCTURE AND DETAILS

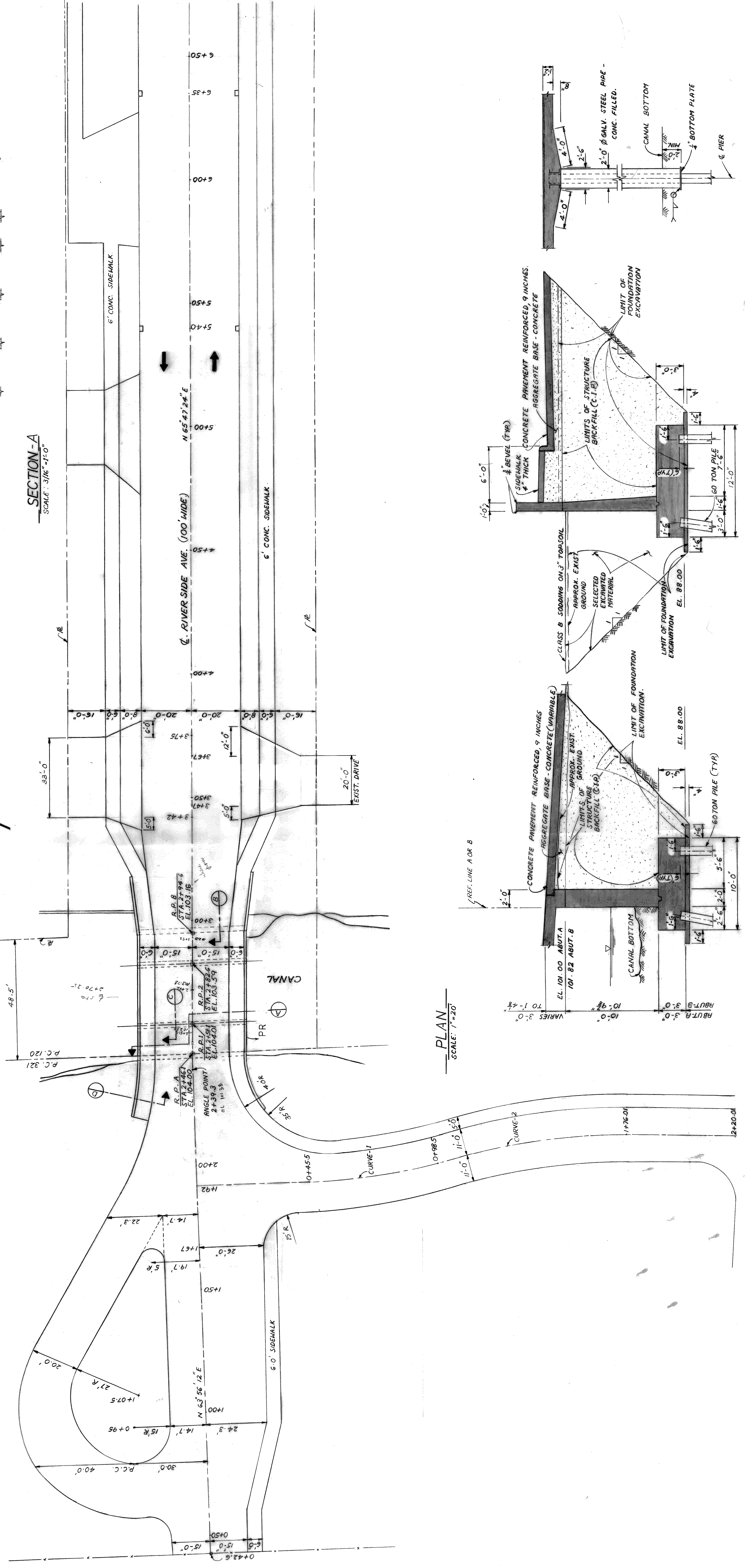
a.o. contract no.  
 sheet of drawing no.  
 date



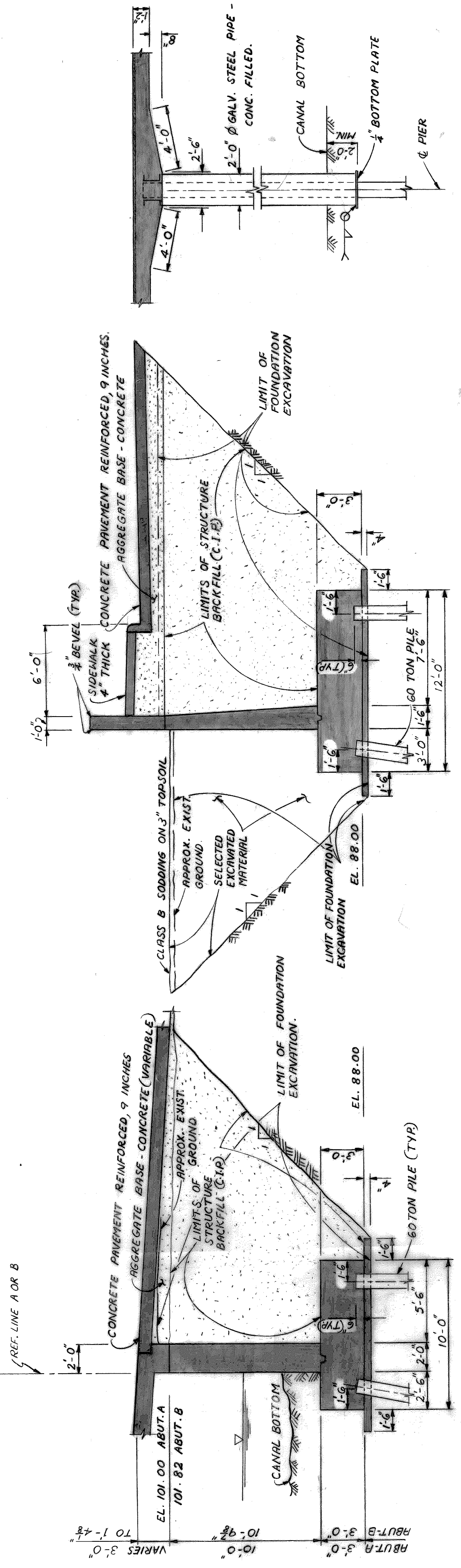
SECTION-A  
 SCALE: 3/16" = 1'-0"



ELEVATION  
 SCALE: HORIZ. 1" = 20'  
 VERT. 1" = 10'



PLAN  
 SCALE: 1" = 20'



SECTION-B  
 SCALE: 3/8" = 1'-0"

SECTION-C  
 SCALE: 3/8" = 1'-0"

SECTION-D  
 SCALE: 3/8" = 1'-0"