

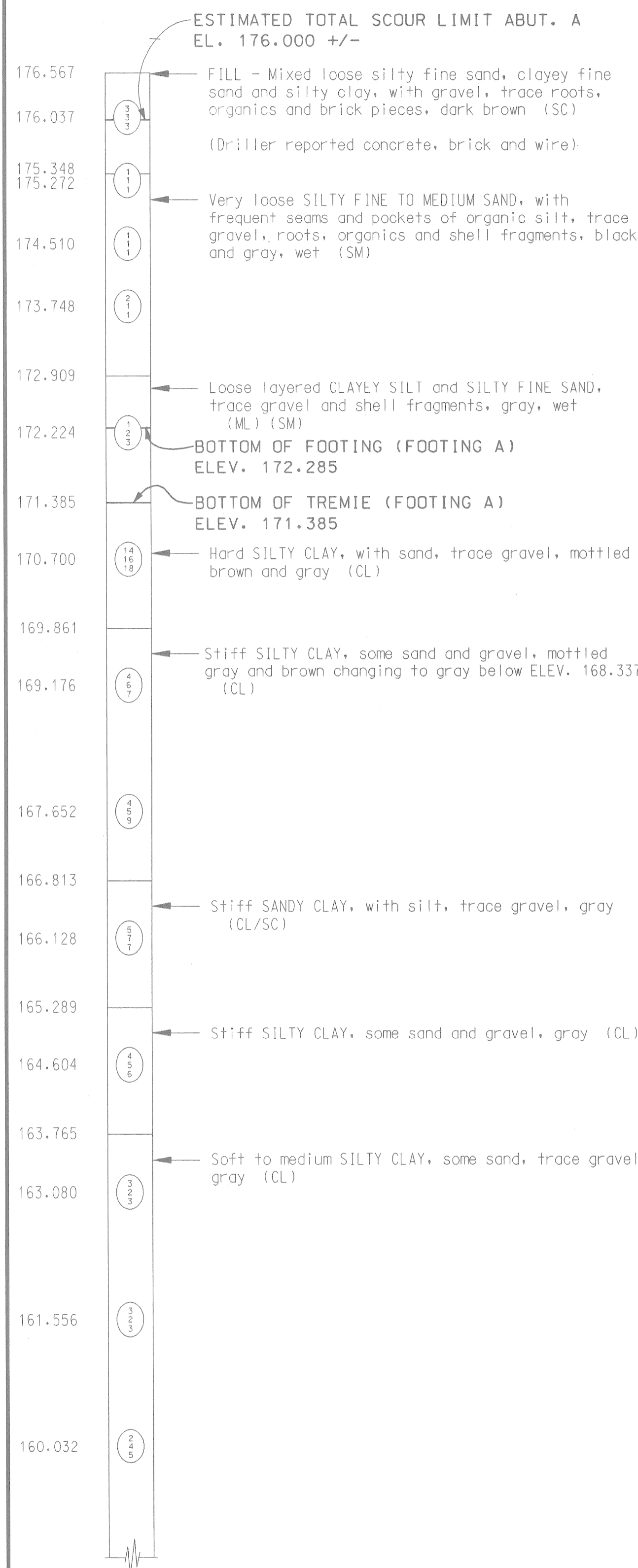
TEST HOLE TB-#R-1

LOCATION STATION 9+986.350 6939 LT.

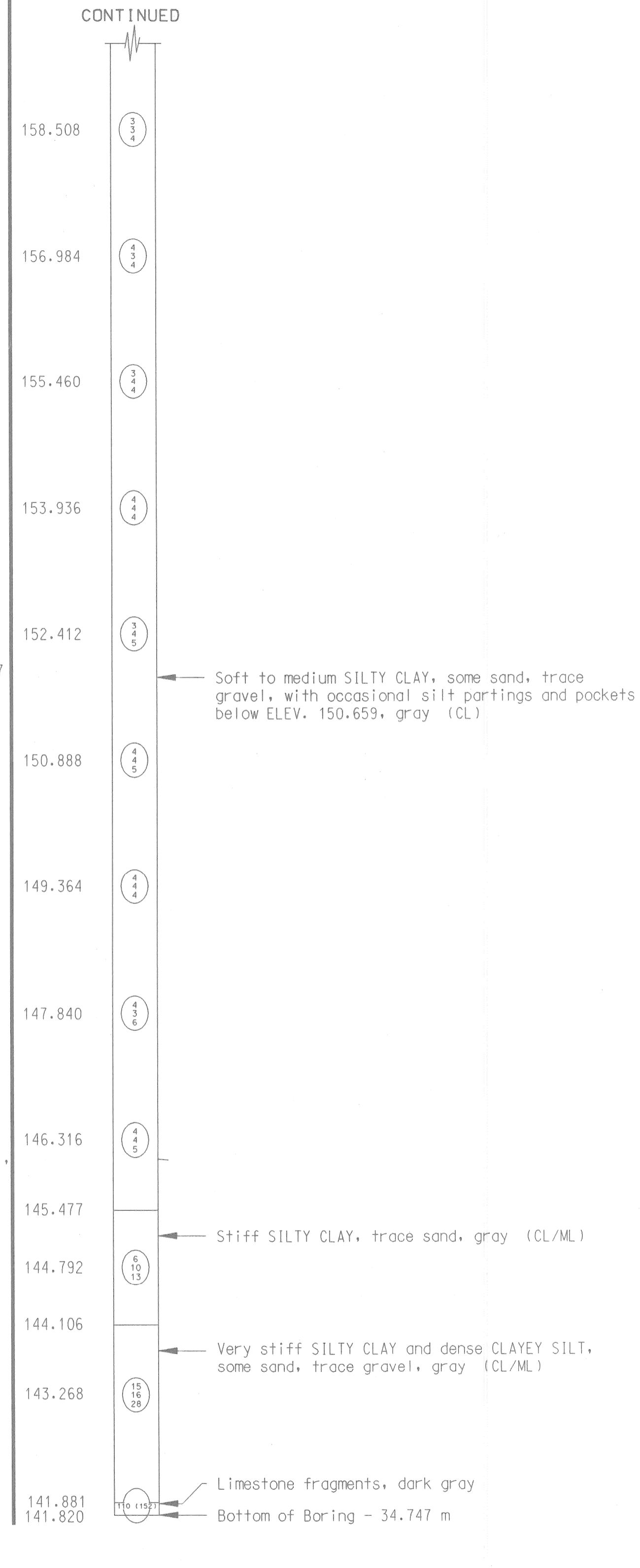
RIVERSIDE AVE. OVER CANAL

ELEV. GROUND SURFACE ELEVATION 176.567

ELEV.



CONTINUED



NOTE: WATER FIRST ENCOUNTERED AT ELEV. 175.043

BORING DATE 4/ 4/97

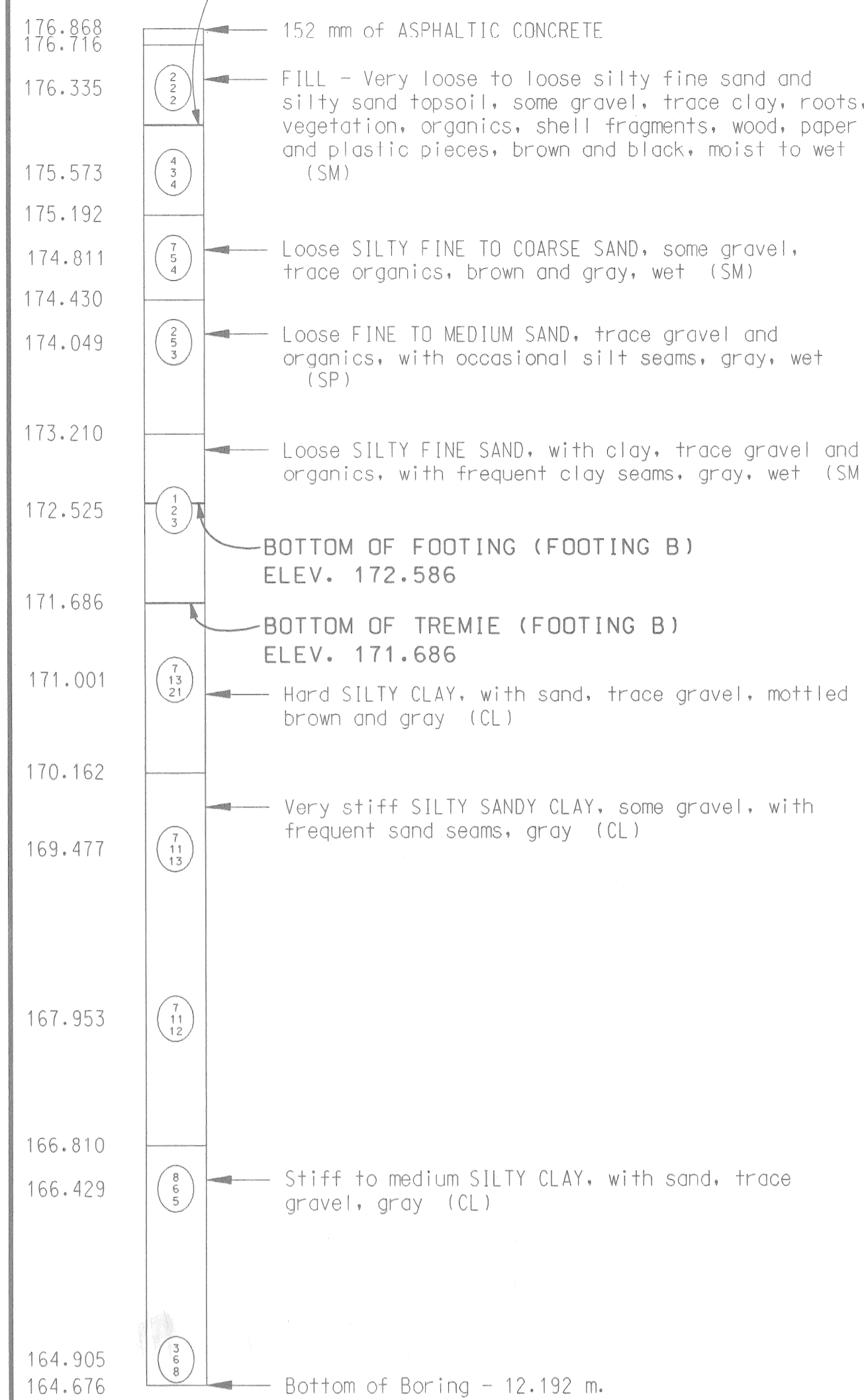
TEST HOLE TB-#R-2

LOCATION STATION 10+011.894 3242 LT.

RIVERSIDE AVE. OVER CANAL

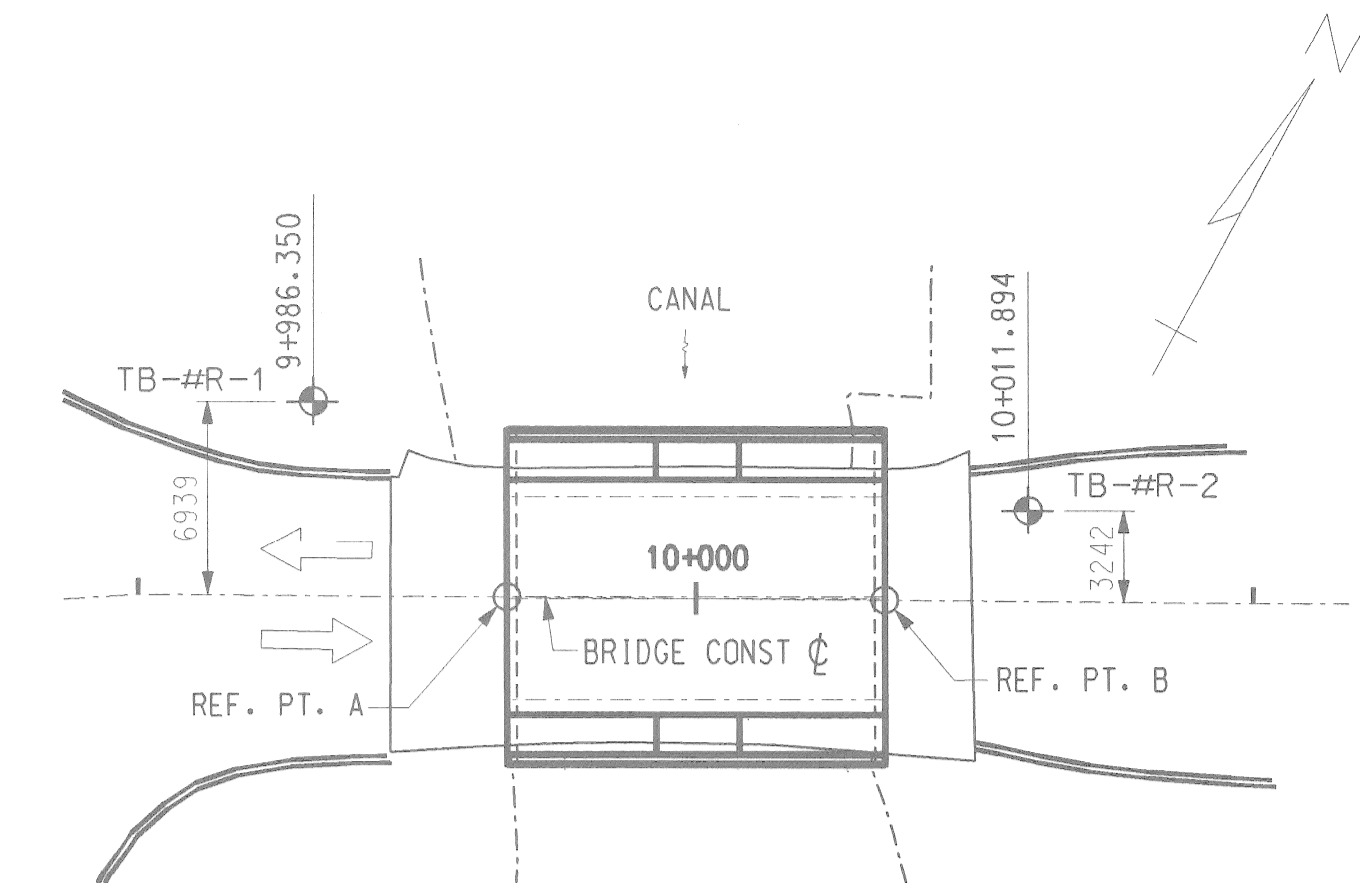
ELEV. GROUND SURFACE ELEVATION 176.868

ESTIMATED TOTAL SCOUR LIMIT ABUT. B EL. 176.000 +/-



NOTE: WATER FIRST ENCOUNTERED AT ELEV. 175.649

BORING DATE 4/ 4/97



PLAN SCALE: NTS

NOTES:

NUMBERS IN CIRCLES DENOTE NUMBER OF BLOWS REQUIRED TO DRIVE A 50.8 mm SPLIT SPOON SAMPLER 3 SUCCESSIVE 0.15 m INCREMENTS USING A 63.5 kg HAMMER FALLING 0.76 m. WHERE THE SAMPLER IS DRIVEN DISTANCES OTHER THAN THE 0.15 m INCREMENT, THE DISTANCE IS SHOWN IN PARENTHESIS TO THE RIGHT OF THE NUMBER OF BLOWS.

- (X) NUMBER OF BLOWS PER 0.15 m
- (X X) NUMBER OF BLOWS PER 0.15 m
- (X X X) NUMBER OF BLOWS PER 0.15 m
- (X) NUMBER OF BLOWS PER 0.15 m
- (X X) NUMBER OF BLOWS PER 0.15 m
- XX (XX) NUMBER OF BLOWS PER DISTANCE (mm)
- (XX) NUMBER OF BLOWS PER DISTANCE (mm)

CONSISTENCY WAS DETERMINED BY INSPECTION OF SAMPLES AND SUBSTANTIATED BY SOILS RESISTANCE TO DRILLING TOOLS.

WATER LEVELS MAY BE INFLUENCED BY RESIDUAL BORING WATER.

THE SOIL BORING LOGS REPRESENT POINT INFORMATION. PRESENTATION OF THIS INFORMATION IN NO WAY IMPLIES THAT SUBSURFACE CONDITIONS ARE THE SAME AT LOCATIONS OTHER THAN THE EXACT LOCATION OF THE BORING.

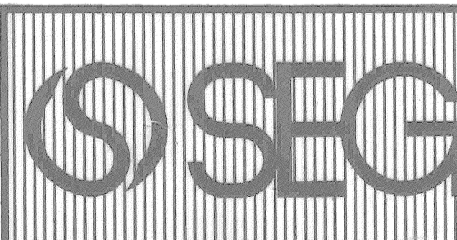
SOIL BORINGS WERE PERFORMED ON DATES SHOWN BELOW BORING.

BY: SOMAT ENGINEERING, INC.
26445 Northline Rd
Taylor, Michigan 48180
PHONE: (313) 946-4966

METRIC

DIMENSIONS ARE IN MILLIMETERS UNLESS OTHERWISE SHOWN. ELEVATIONS, COORDINATES, CURVE AND ALIGNMENT DATA ARE IN METERS. STATIONS ARE IN KILOMETERS + METERS.

REVISIONS	DSGN BY	C.D.P.	12-97
	DR'N BY	R.J.D.	4-97
	CR'D BY	R.G.W.	5-97
	FINAL CK'D BY	M.D.W.	2-99
	APP'D BY		



SNELL ENVIRONMENTAL GROUP, INC.
A DLZ Company
151 W. CONGRESS, SUITE 328
DETROIT, MICHIGAN 48226
TELEPHONE (313) 961-4040



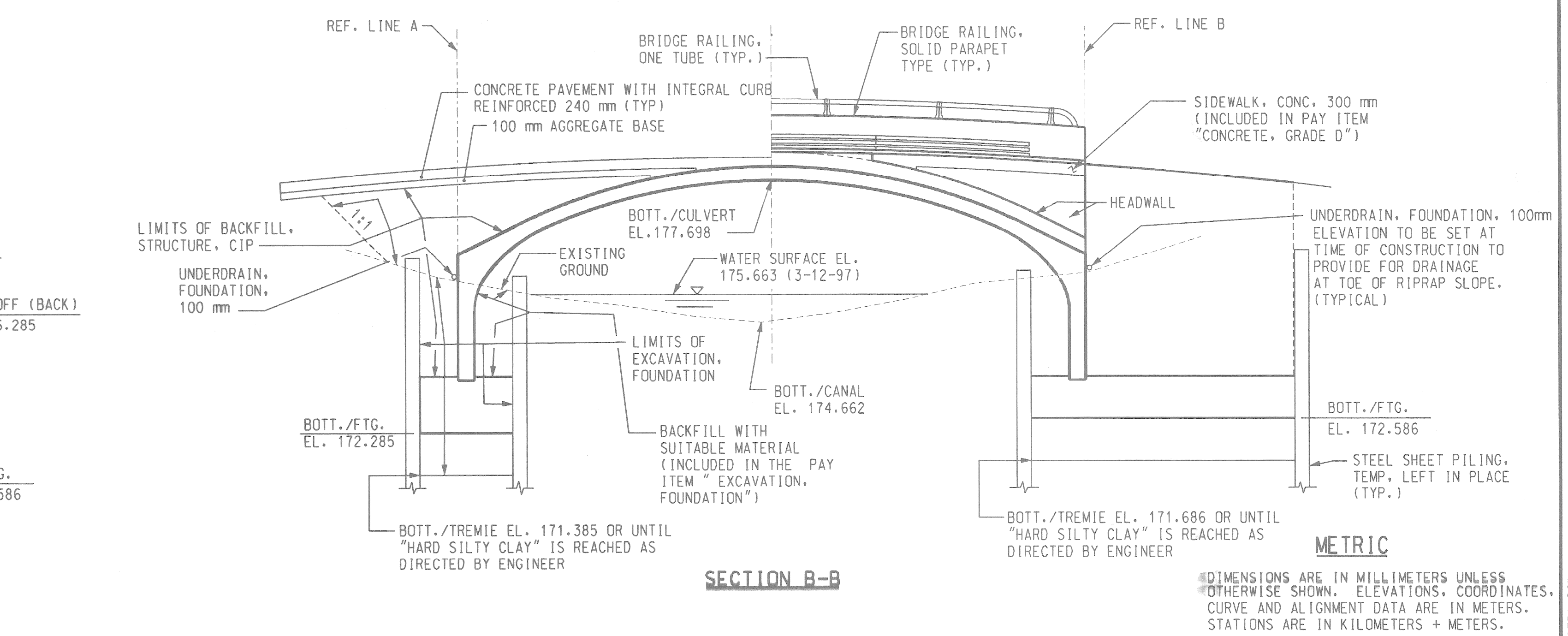
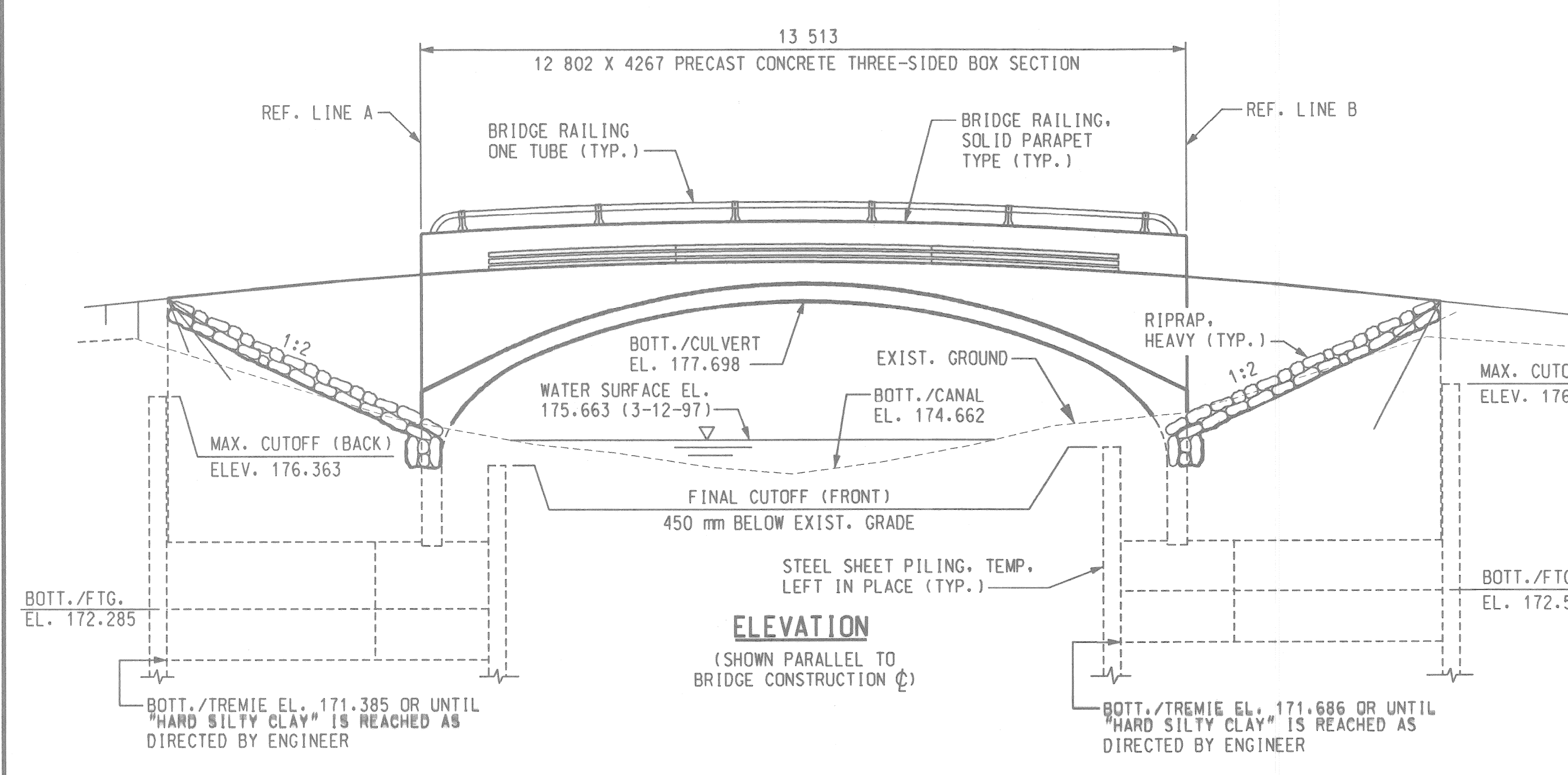
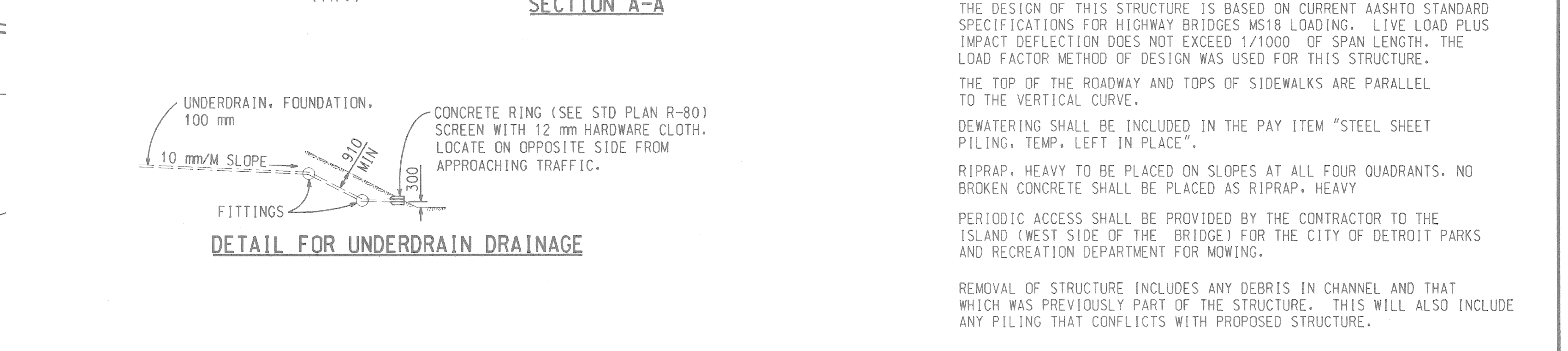
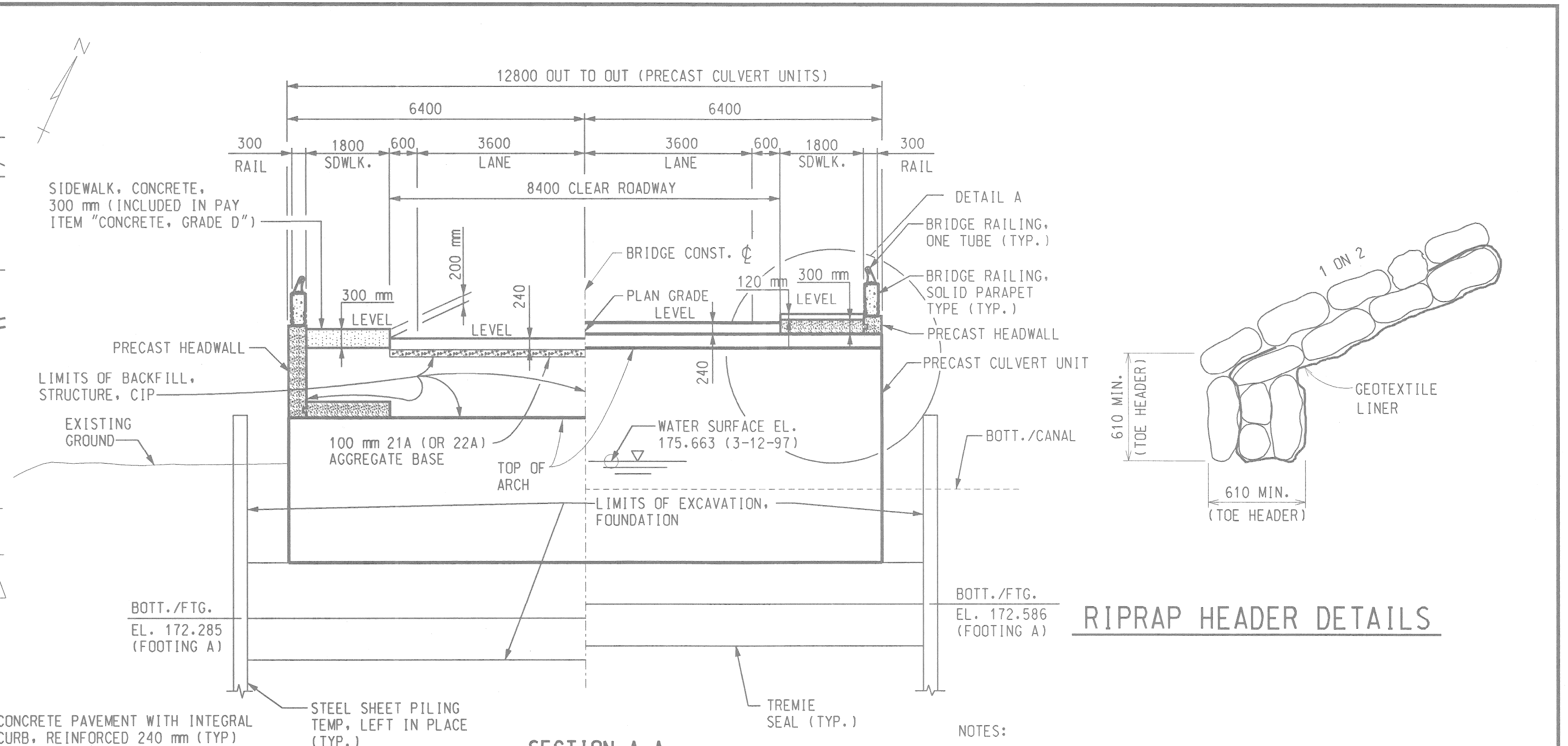
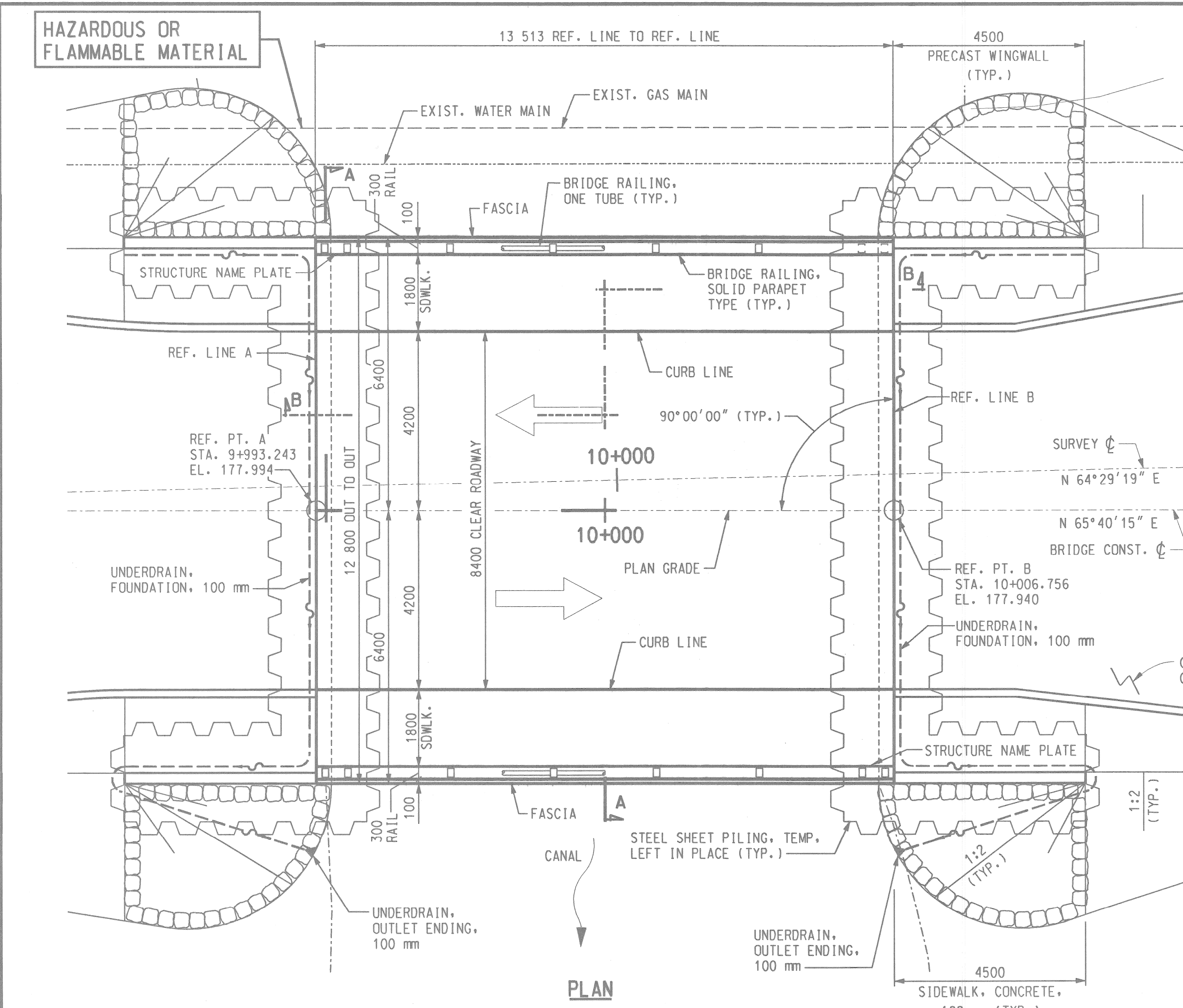
CITY OF DETROIT MICHIGAN

RIVERSIDE AVE. OVER CANAL (BW-242)

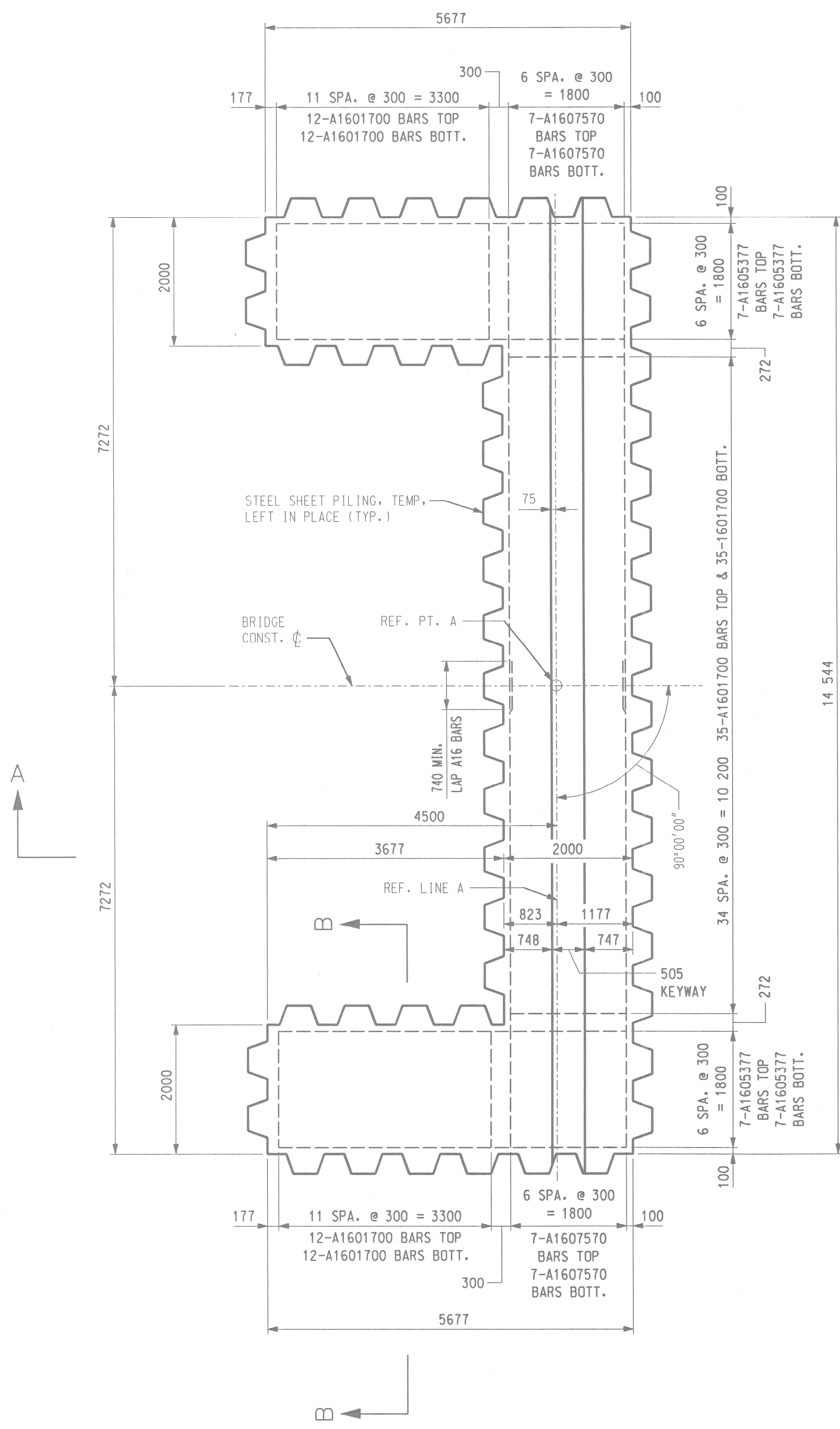
LOG OF BORINGS

SCALE	NOT TO SCALE
PROJECT NO.	9641-5160-01
SHEET NO.	R3 OF 19

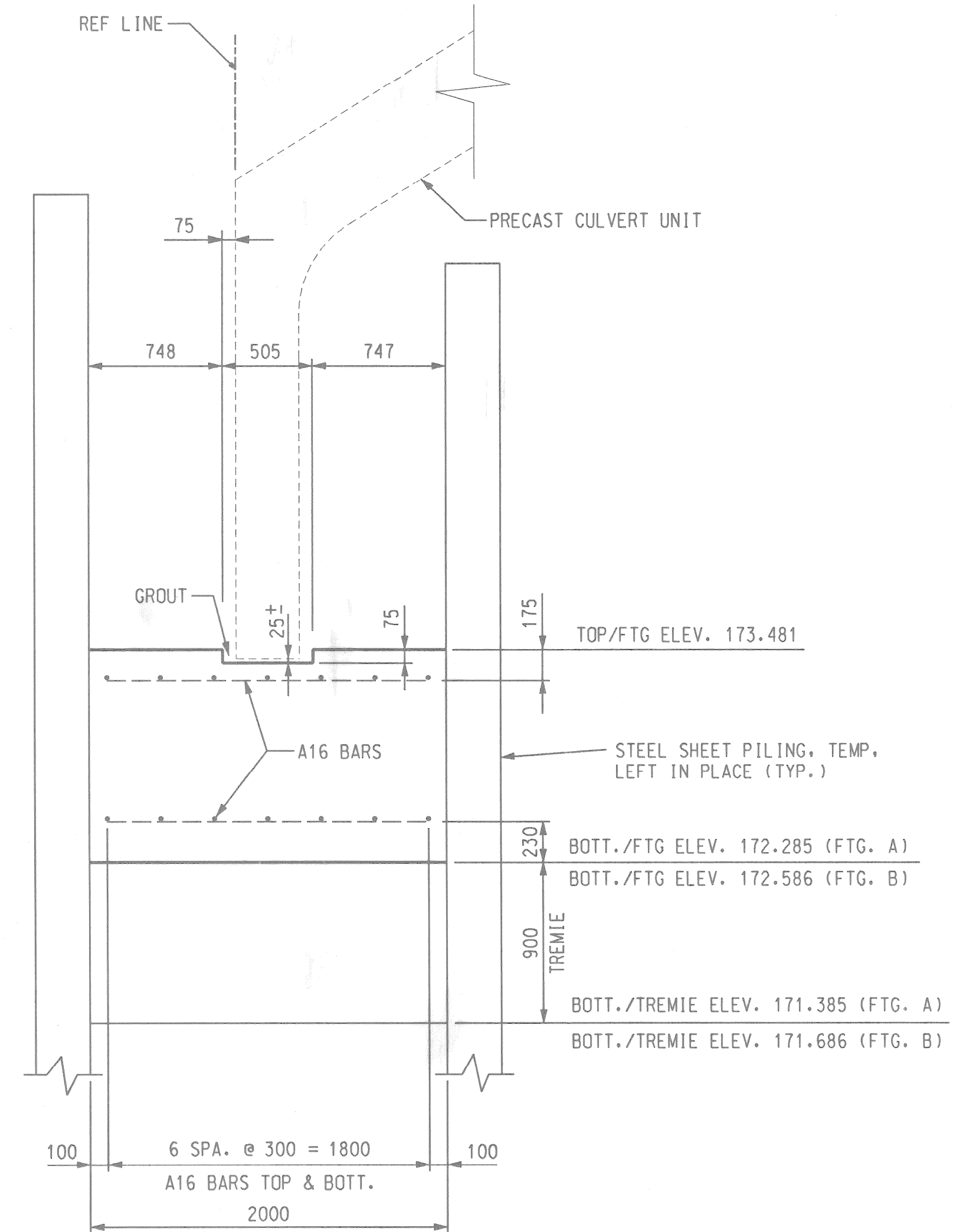
FILE NAME: 02BORING.DGN



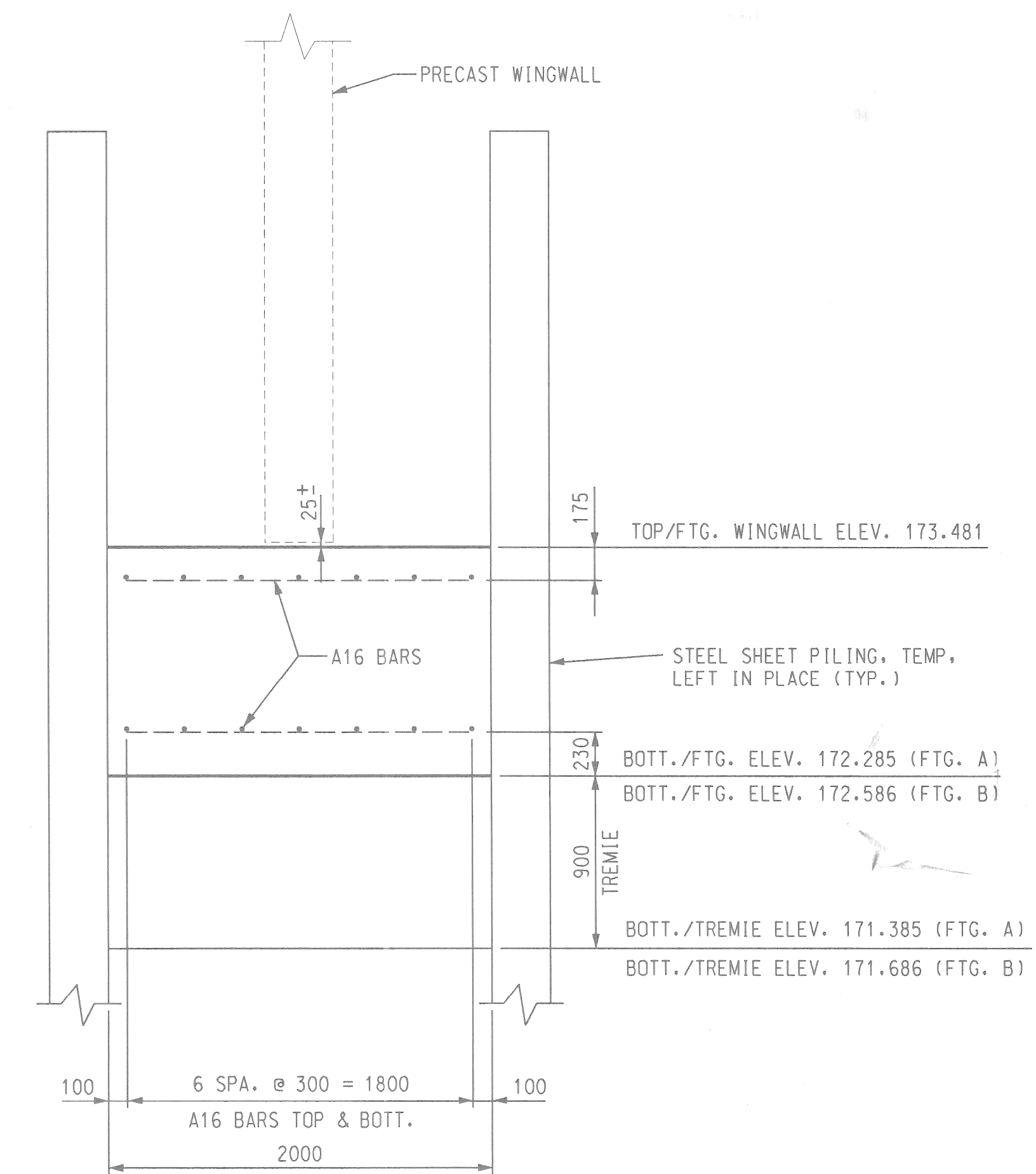
REVISIONS	DSGN BY	C.D.P.	12-97		SNELL ENVIRONMENTAL GROUP, INC. A DLZ Company 151 W. CONGRESS, SUITE 328 DETROIT, MICHIGAN 48226 TELEPHONE (313) 961-4040		CITY OF DETROIT MICHIGAN	RIVERSIDE AVE. OVER CANAL (BW-242)	GENERAL PLAN OF STRUCTURE	SCALE	NOT TO SCALE
	DR'N BY	R.J.D.	5-97							PROJECT NO.	9641-5160-01
	CK'D BY	R.G.W.	5-97							SHEET NO.	R4 OF 19
	FINAL CK'D BY	M.D.W.	2-99							APP'D BY	



PLAN OF FOOTING LAYOUT
(ABUTMENT A SHOWN ABUTMENT B OPPOSITE HAND)



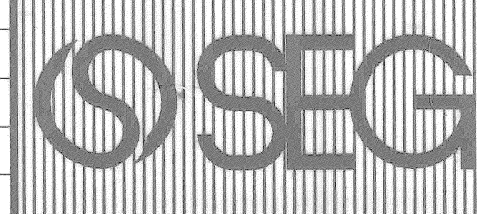
SECTION A-A



SECTION B-B

METRIC
DIMENSIONS ARE IN MILLIMETERS UNLESS OTHERWISE SHOWN. ELEVATIONS, COORDINATES, CURVE AND ALIGNMENT DATA ARE IN METERS. STATIONS ARE IN KILOMETERS + METERS.

REVISIONS	DSGN BY	C.D.P.	12-97
	DR'N BY	R.J.D.	5-97
	CK'D BY	R.G.W.	5-97
	FINAL CK'D BY	M.D.W.	2-99
	APP'D BY		



SNELL ENVIRONMENTAL GROUP, INC.
A DLZ Company
151 W. CONGRESS, SUITE 328
DETROIT, MICHIGAN 48226
TELEPHONE (313) 961-4040



CITY OF DETROIT MICHIGAN

RIVERSIDE AVE OVER CANAL (BW-242)

FOOTING DETAILS

SCALE	NOT TO SCALE
PROJECT NO.	9641-5160-01
SHEET NO.	R5 OF 19

FILE NAME: 05CA1301.DGN