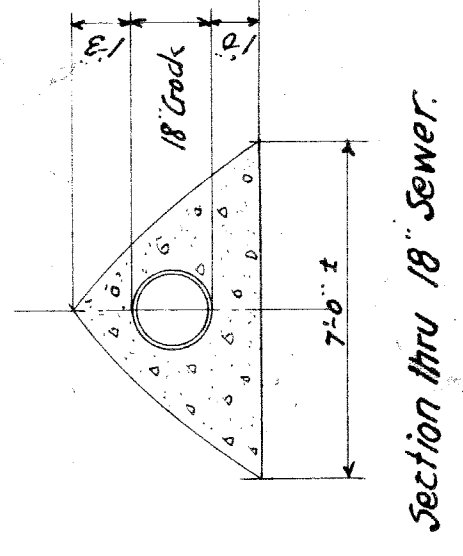
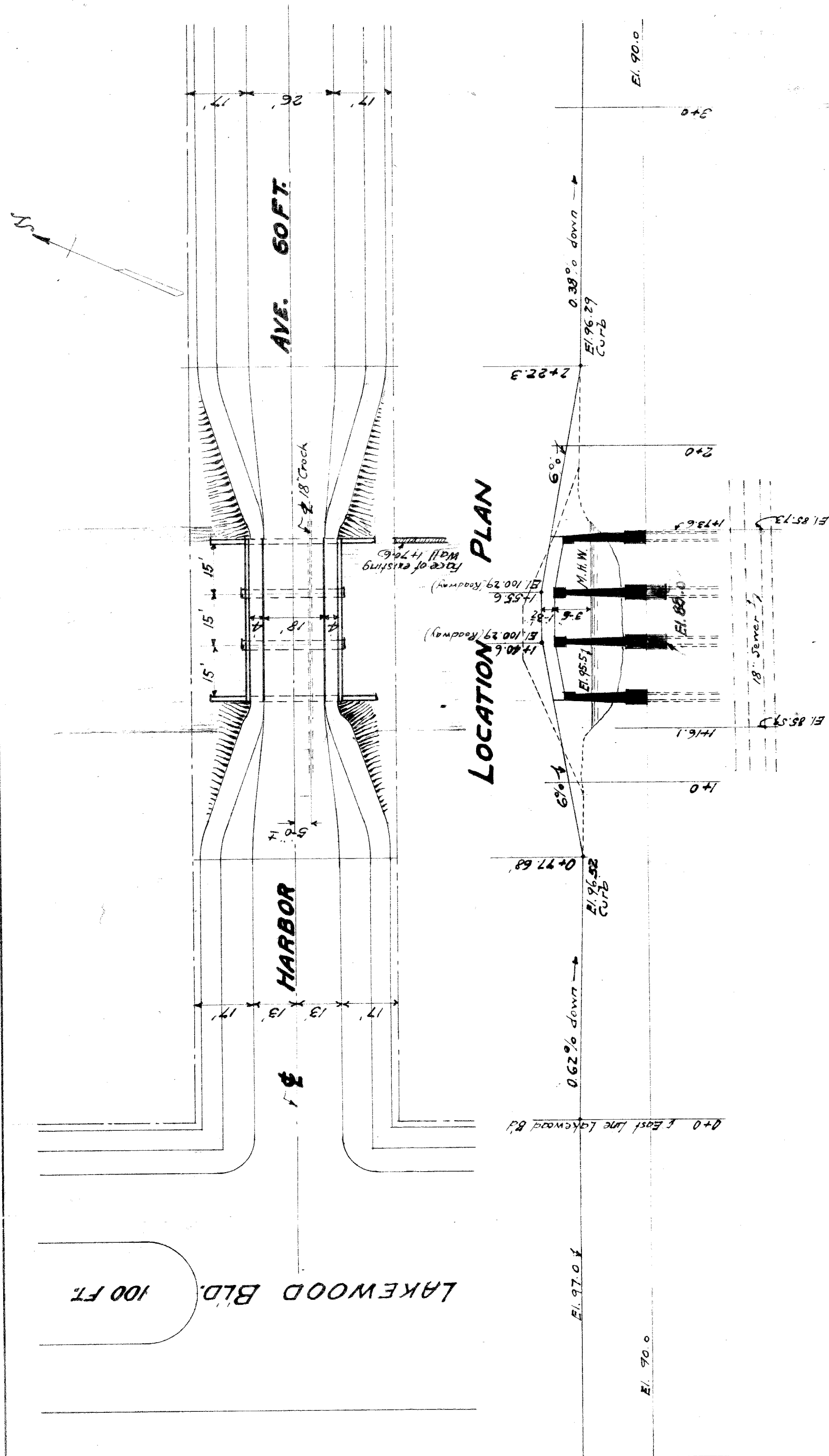
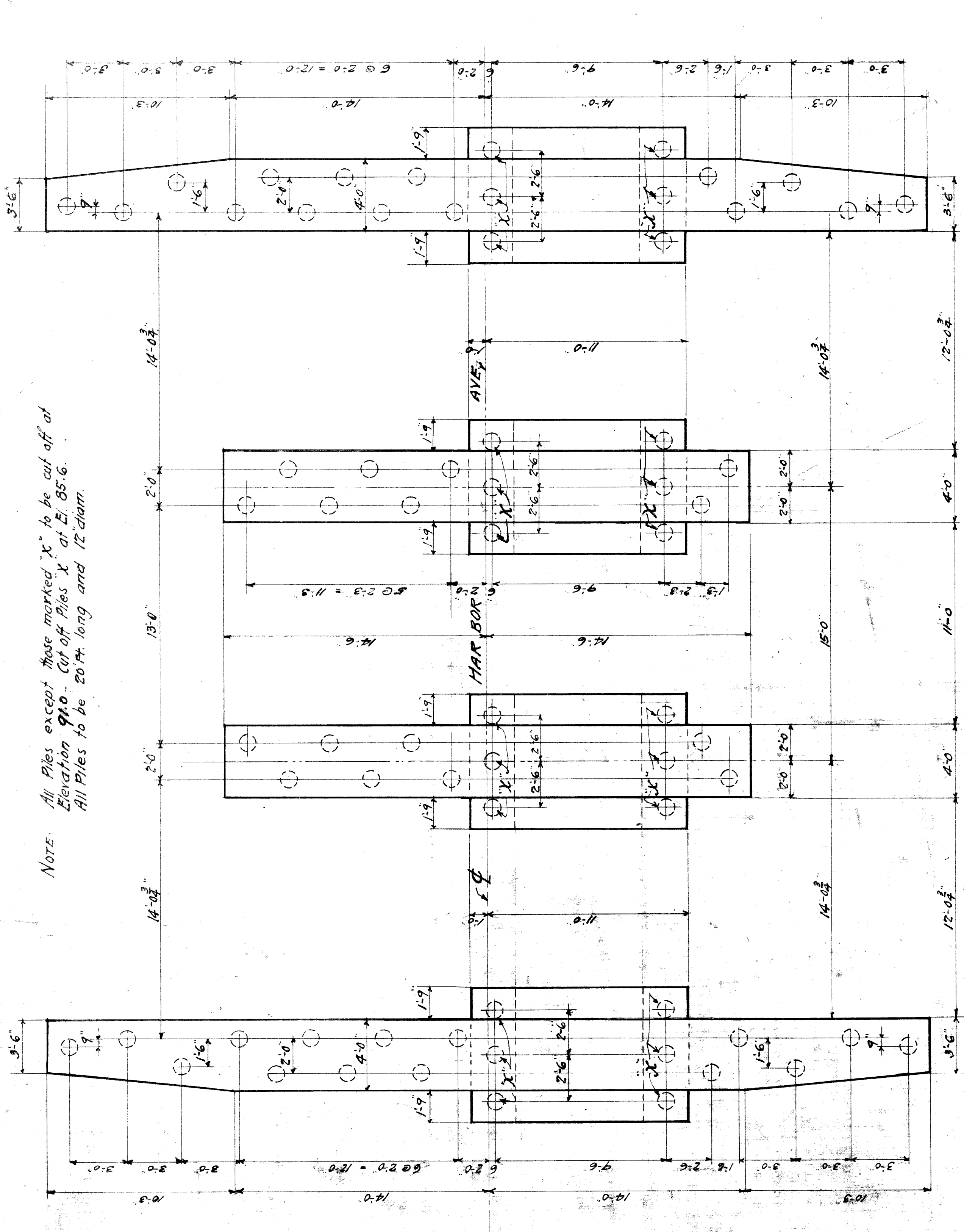


HARBOR AVE - CANALBRIDGELOCATION*Harbor Ave N. of Fox Creek over Canal*MAINTAINED BY*D.P.W. City of Detroit*BUILT*1921*REPAIRSDATE OF COMMON COUNCIL RESOLUTION *7-26, 8-23, 9-20-23.*CONTRACTOR*Thos. E. Curry*COST*8,306.08 (in 1921)*DESCRIPTION OF SPANS*3 Steel Girder Spans 15' long*OVERALL LENGTH*48'-0"*CLEAR ROADWAY*18'-0"*TYPE OF ABUTMENTS*Concrete Abutment Pile Foundation*TYPE OF PAVEMENT*Asphalt on Concrete base*TYPE OF SIDEWALK*4' Cement*TYPE OF HANDRAIL*Concrete*TYPE OF GUARD*Concrete Curb*DRAWINGS MADE BY*City Engineer's Office*REMARKS

BW241-2

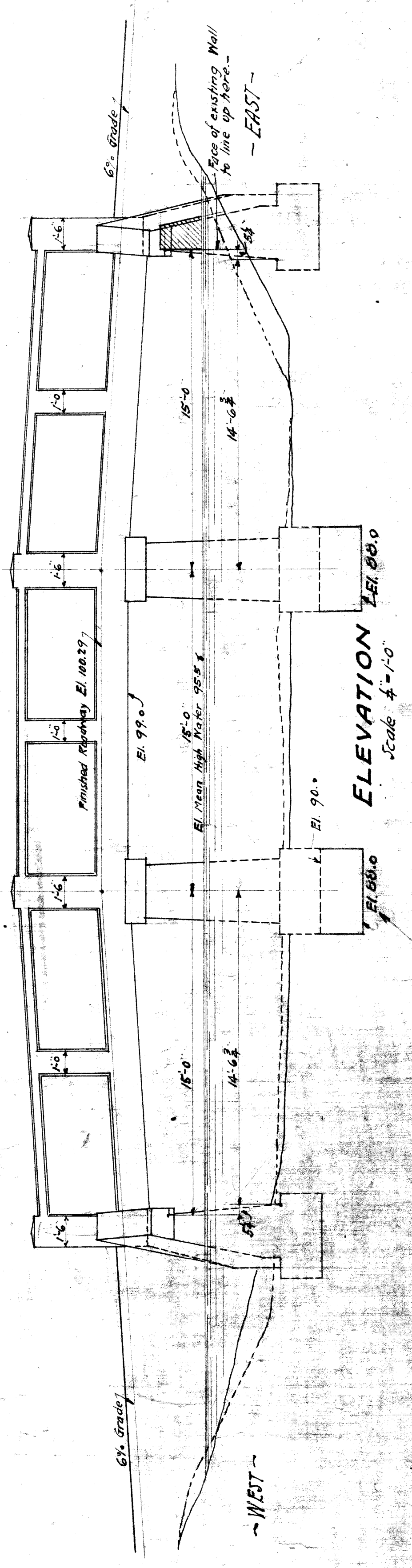


PROFILE
Scale: Horiz. 1" = 30'
Vert. 1" = 10'



NOTE: All Piles except those marked "X" to be cut off at Elevation 91.0 - Cut off Piles "X" at El. 85.6. All Piles to be 20 ft. long and 12 diam.

FOUNDATION AND PILING PLAN
Scale: 1/4" = 1'-0"



ELEVATION
Scale: 1/4" = 1'-0"

Piers built 2 ft. lower on account of muck encountered in center of channel.

GENERAL NOTES:

- LOADING: Roadway (Impact, 25%) 18 Ton Truck
- Slideways: 100 #/sq ft
- UNIT STRESSES:
 - Concrete in Compression 650 #/sq in
 - Reinforcing Steel in Tension 16000 #/sq in
 - Steel Beams 16000 #/sq in
 - Pile Pressure 13 Tons
- CONCRETE MIX: 1:2:4

CITY OF DETROIT
DEPARTMENT OF PUBLIC WORKS
OFFICE OF CITY ENGINEER
DIVISION OF GRADE SEPARATION AND BRIDGES
HARBOR AVE. BRIDGE
OVER
FIRST CHANNEL
EAST LAKEWOOD BLVD.
AUG. 15, 1921
DRAWN BY: R.S.
CHECKED BY:
SHEET 1 OF 2
BW 241-1