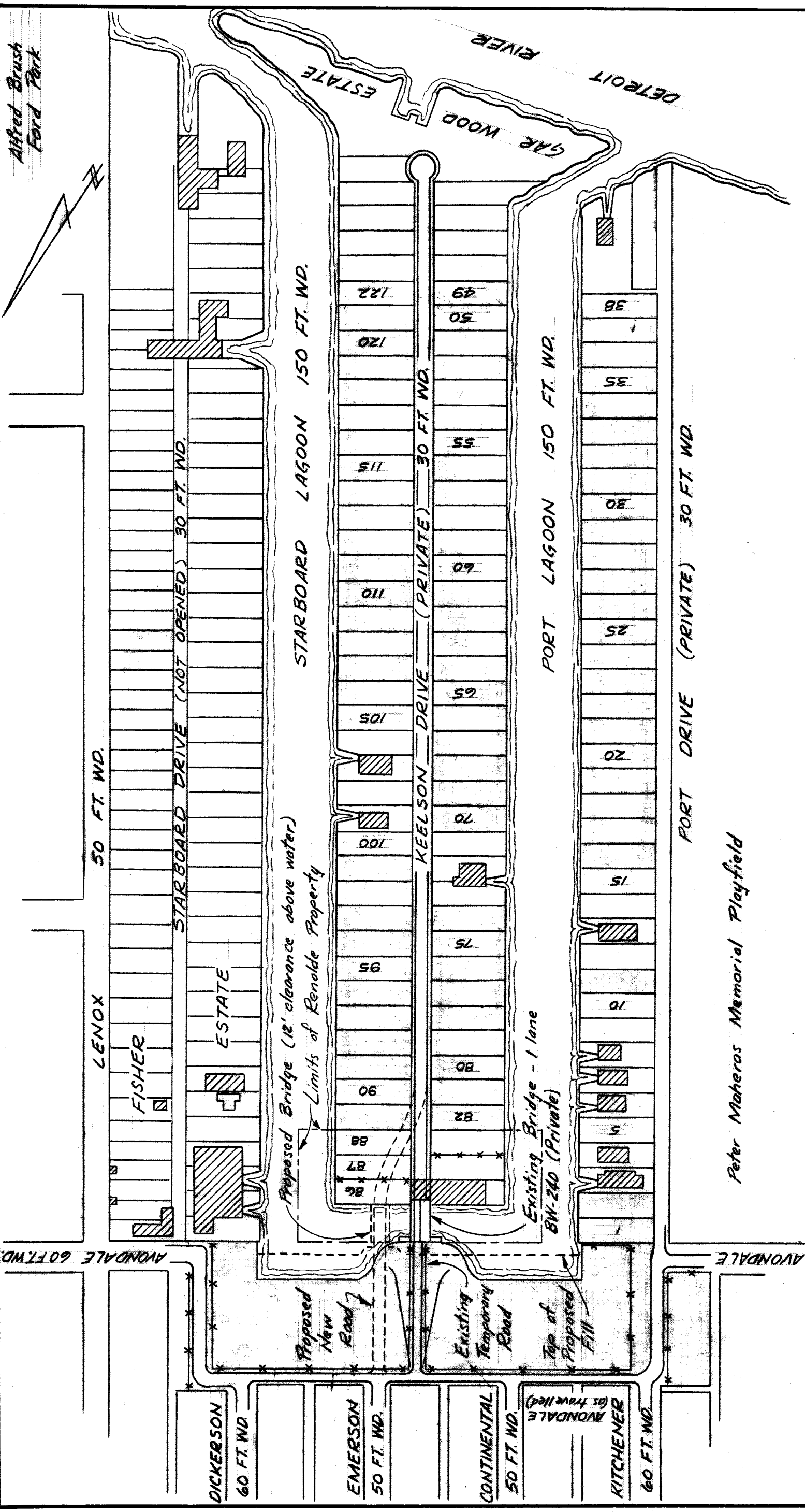


Alfred Brush Ford Park



LOCATION PLAN

Peter Maheras Memorial Playfield

City Owned Property
Typical Lot

REVISIONS	DESCRIPTION	DRW.	CHKD.	APR.	DATE
F					
E					
D					
C					
B					
A					

DESIGNED BY
A. Hanson

DRAWN BY
[Signature]

TRACED BY
[Signature]

CHECKED BY
[Signature]

CITY OF DETROIT
DEPARTMENT OF PUBLIC WORKS
CITY ENGINEER'S OFFICE
BUREAU OF DESIGN

PROPOSED IMPROVEMENTS
GRAYHAVEN AREA

BOOK NO. _____

PAGE NO. _____

SCALE 1" = 200'

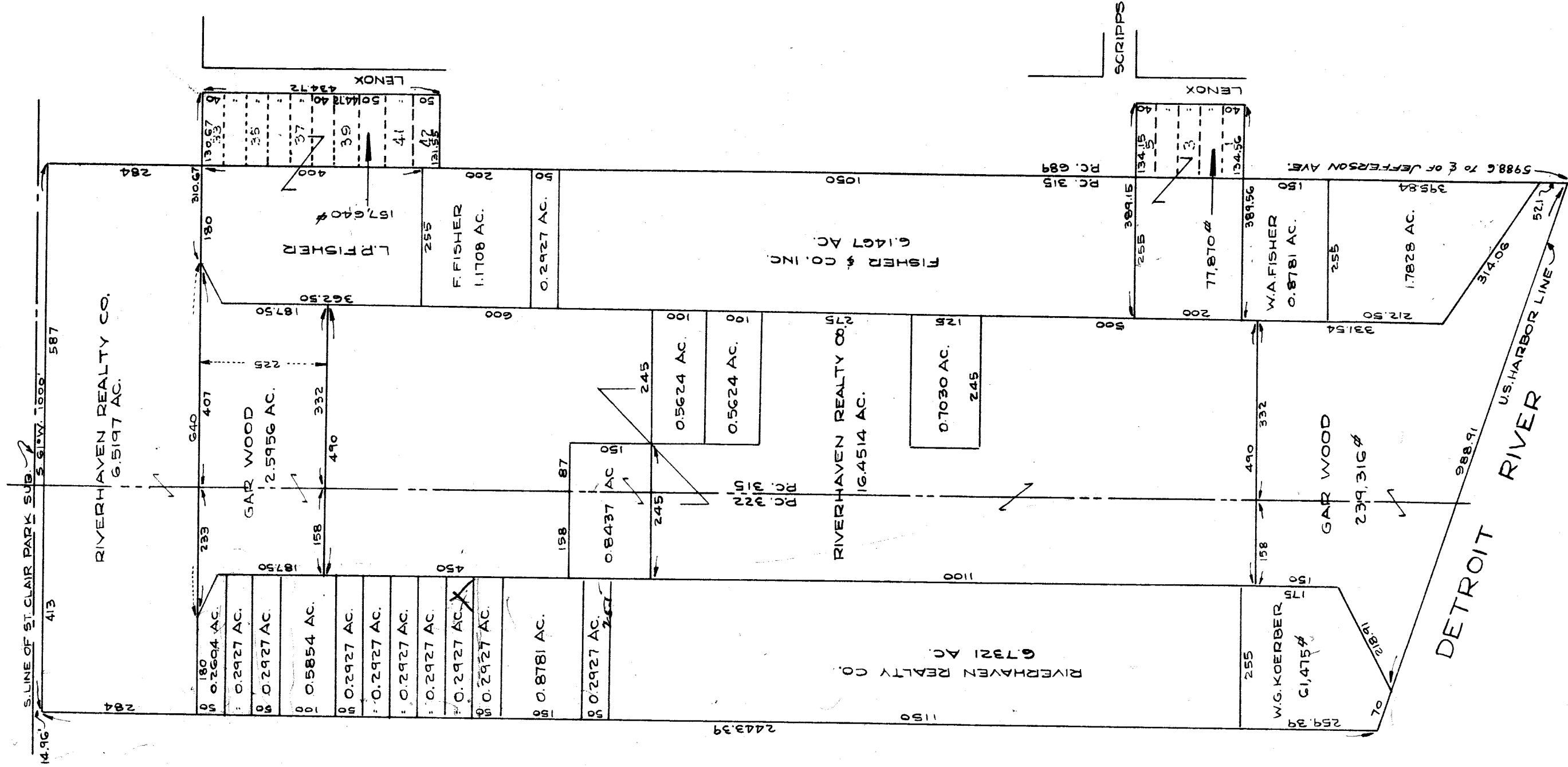
DATE 1-2-64

DRG. NO. C-101 P

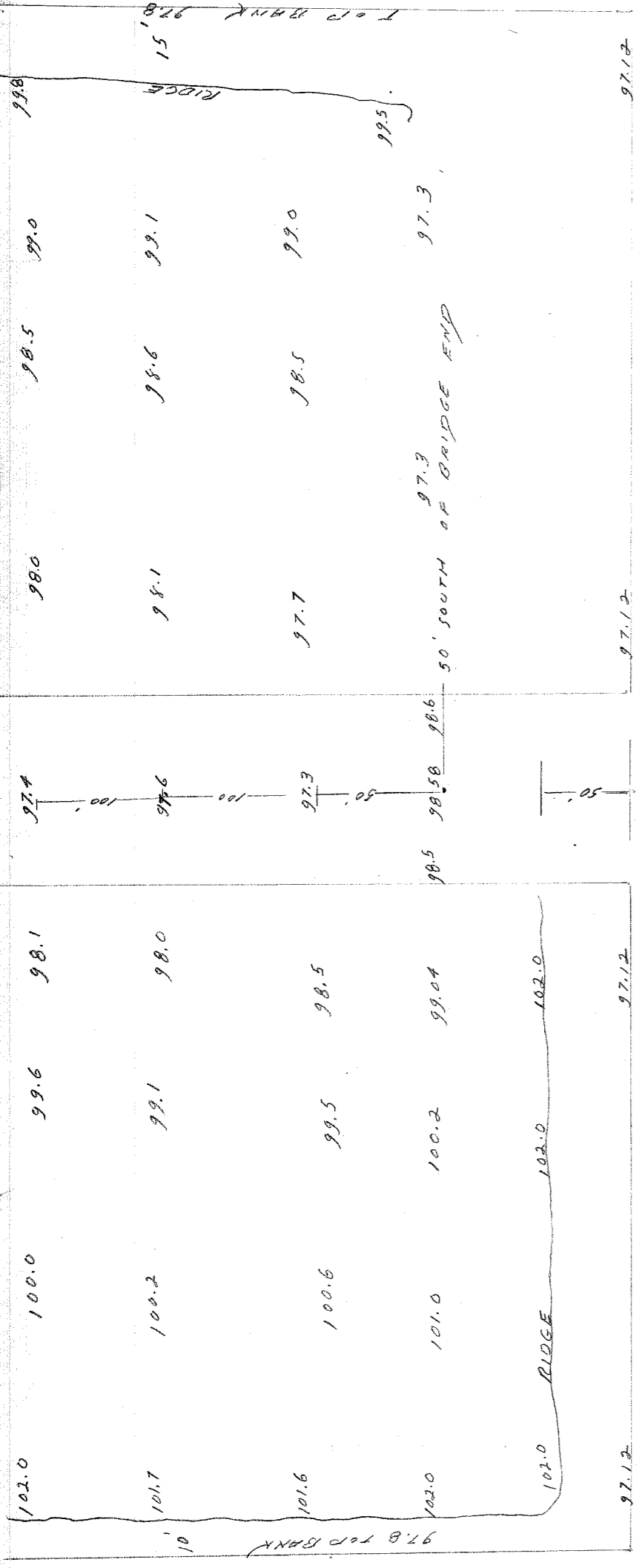
RT File with
Dwgs
6/29/67

GRAYHAVEN

WARD 21-ASSESSED FROM S. JEFFERSON



PREPARED BY
 BOARD OF ASSESSORS
 CITY OF DETROIT
 10-1-43 L.R. FLANDERS
 SCALE 1" = 200'
 REVISIONS:



SET RR SPINE

3000' TRK. & CONNER + SOUTH LINE RR.

SET PK. & RR. + WEST LINE GREYHAWK

SET PK W/L KITCHENER + HANDBL

98.1

90.00'

SET STA.

86.00'

15'

SET STA.

102.0'

101.5

LAST CURELL

8.55

WATER

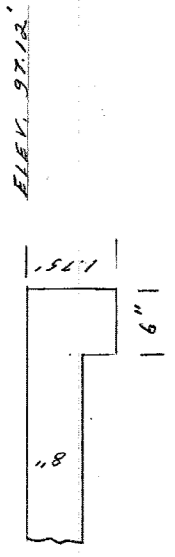
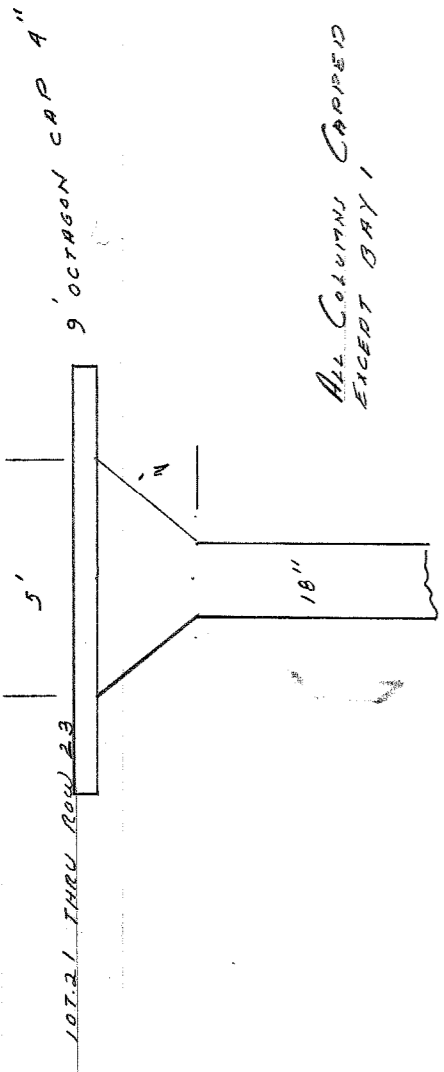
AVONDALE

TRAIL LINE 85.00' NORTH OF AVONDALE

HIGH GROUND RIDGE UNDERNEATH OVER HANG

98.4	98.4	98.3	98.1	97.9	97.7	95.3	95.4	95.4
96.7	96.4	96.2	96.0	95.8	95.7	95.4	95.4	95.4
95.9	95.7	95.6	95.5	95.4	95.3	95.3	95.4	95.4
95.7	95.6	95.5	95.4	95.4	95.3	95.3	95.4	95.4
95.6	95.4	95.3	95.2	95.1	95.0	95.0	95.4	95.4

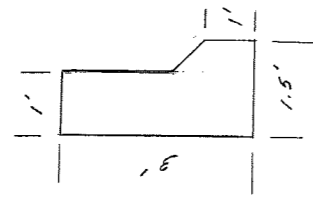
BM 240
 Grayhaven
 Survey Notes
 Sh 2 of 3
 9/12/57



85' x 114' PLATFORM
6" WALL SOLID TO BOTTOM ON THREE SIDES

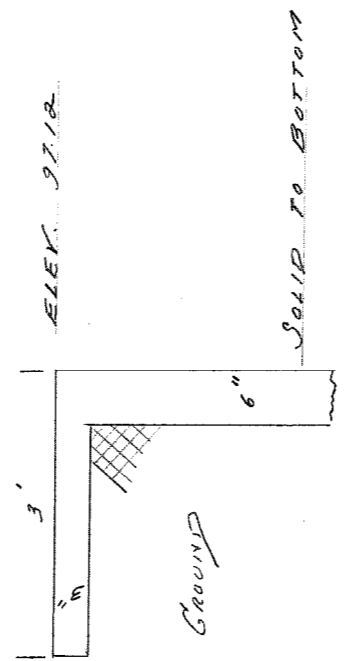
ALL COLUMNS CORRODED
SHEAR BRAY 1

ALL COLUMNS 18" DIA.

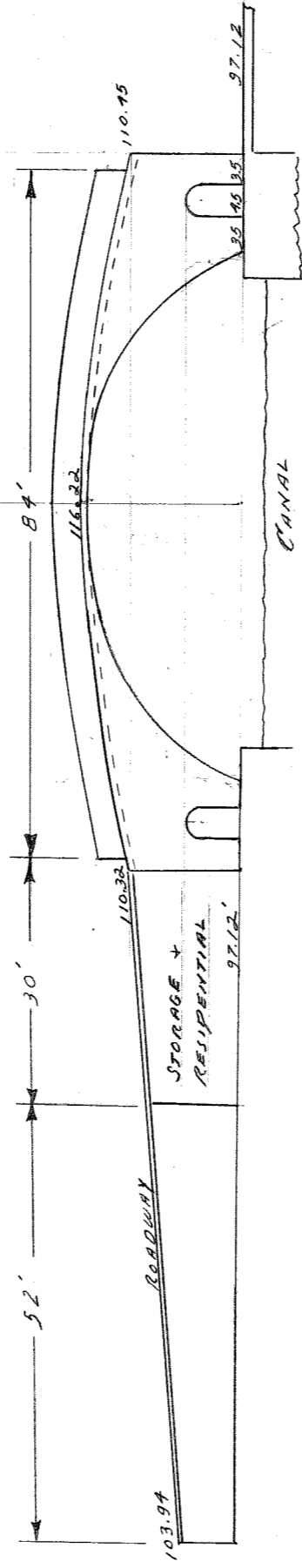


THIS IS PLATFORM

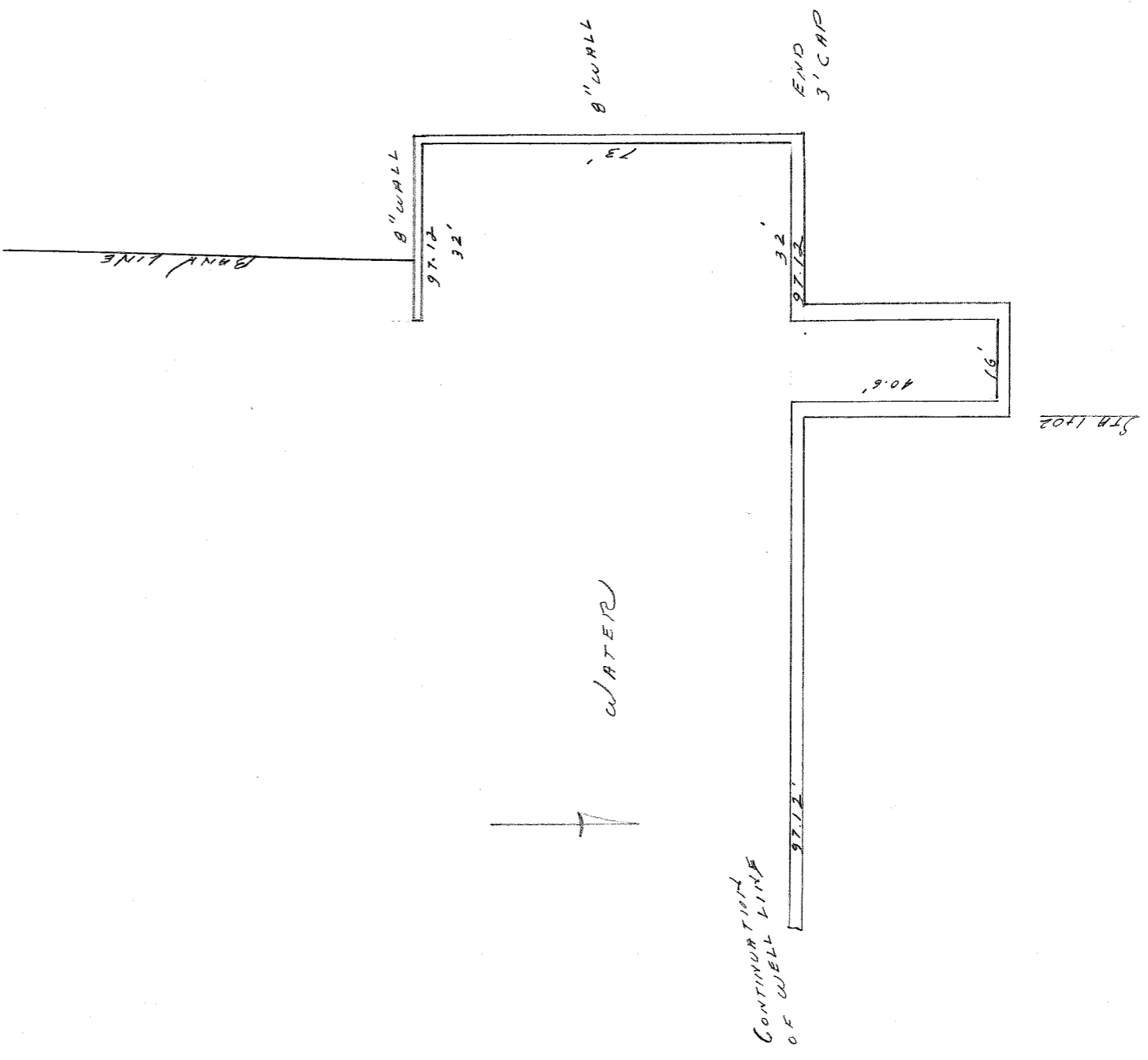
2 BEAMS - 11" BY 11" LINE



BOWTIE WALL

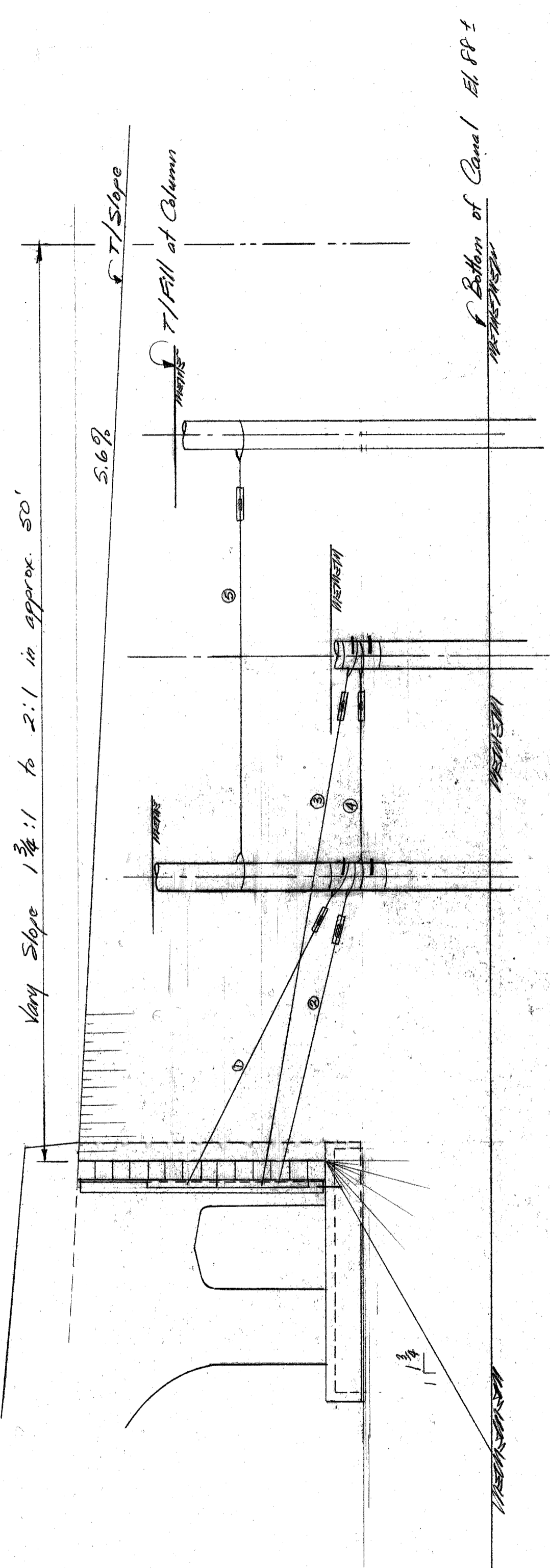
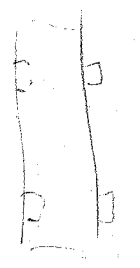
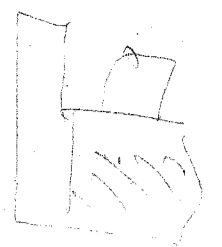
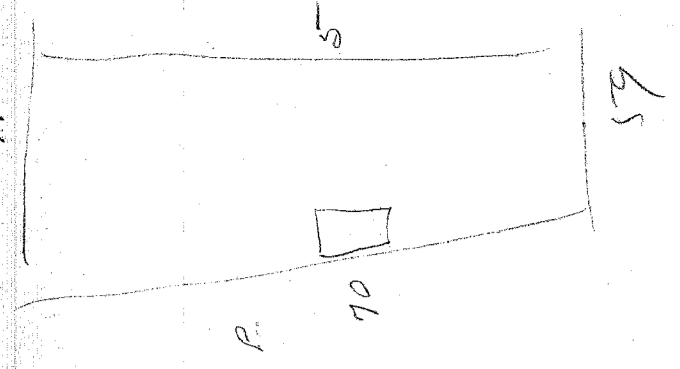


REINFORCED CONC. BRIDGE ARCH



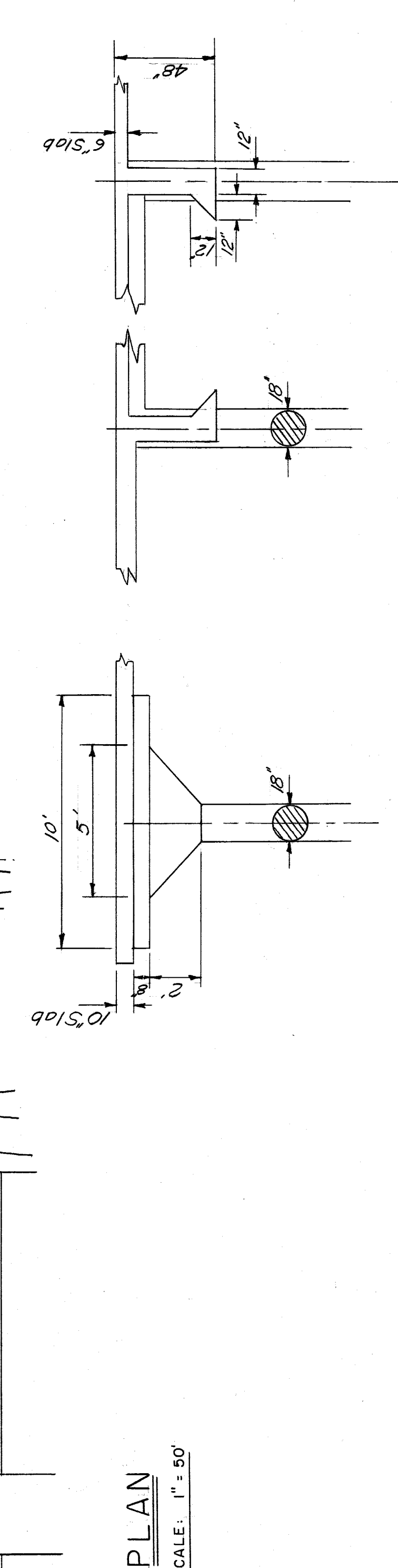
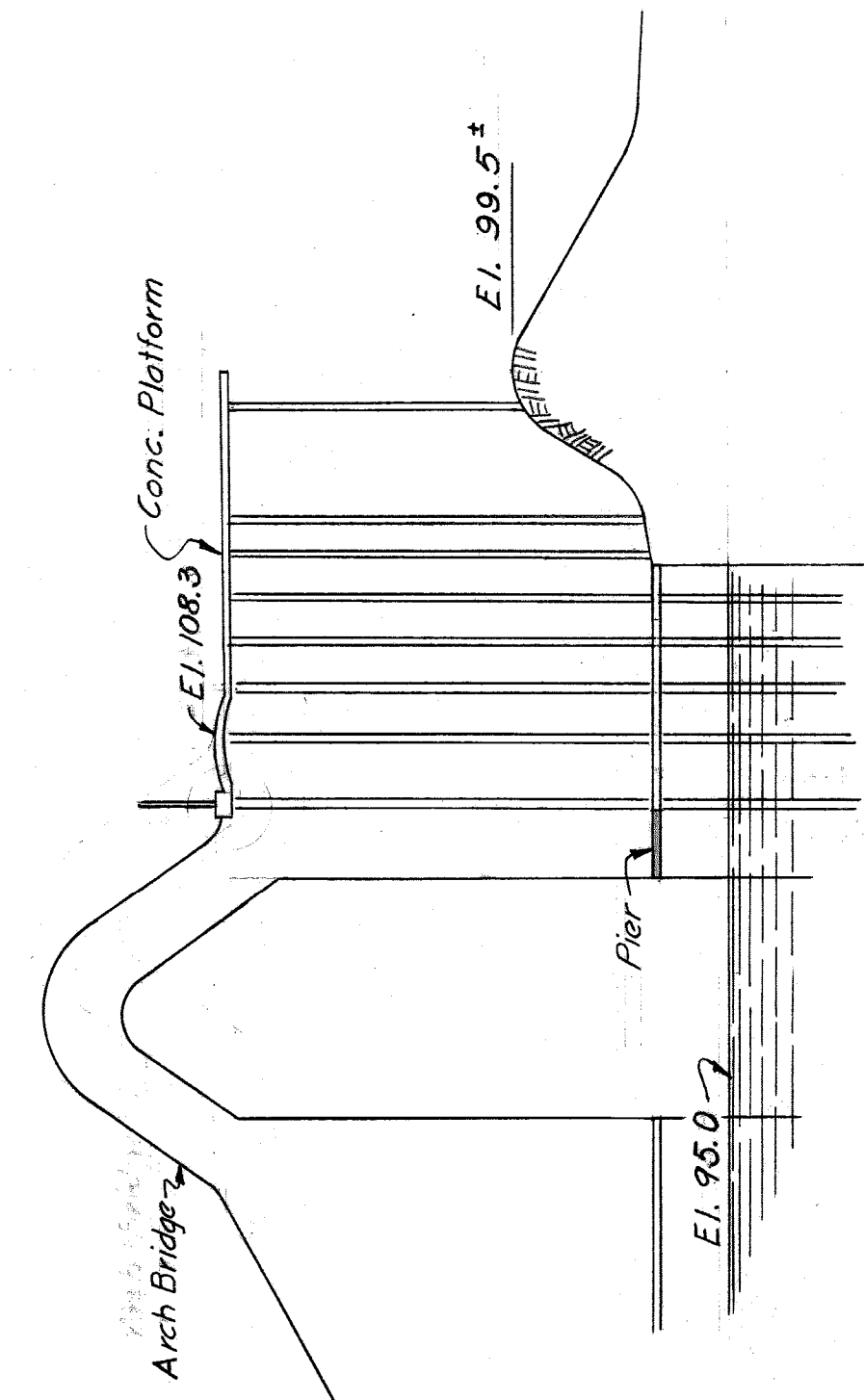
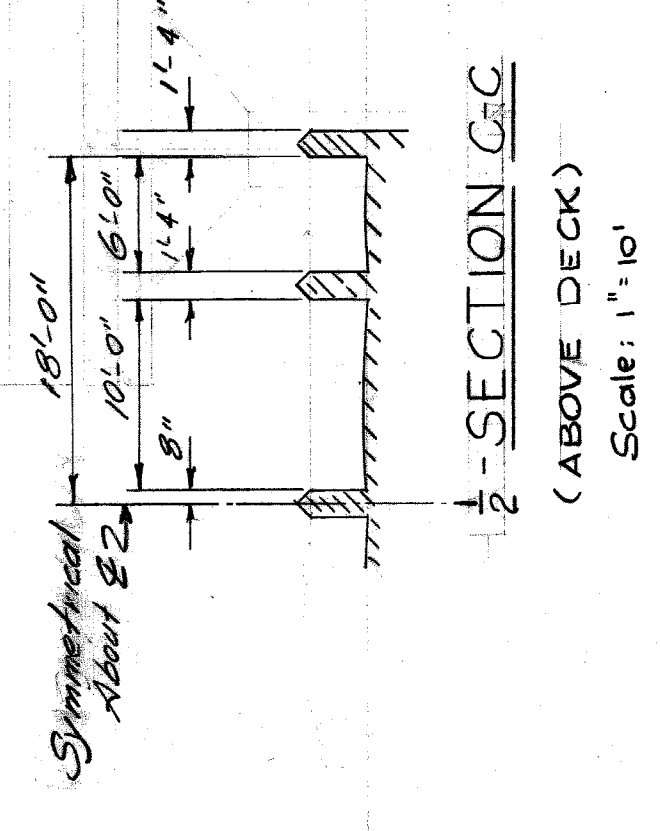
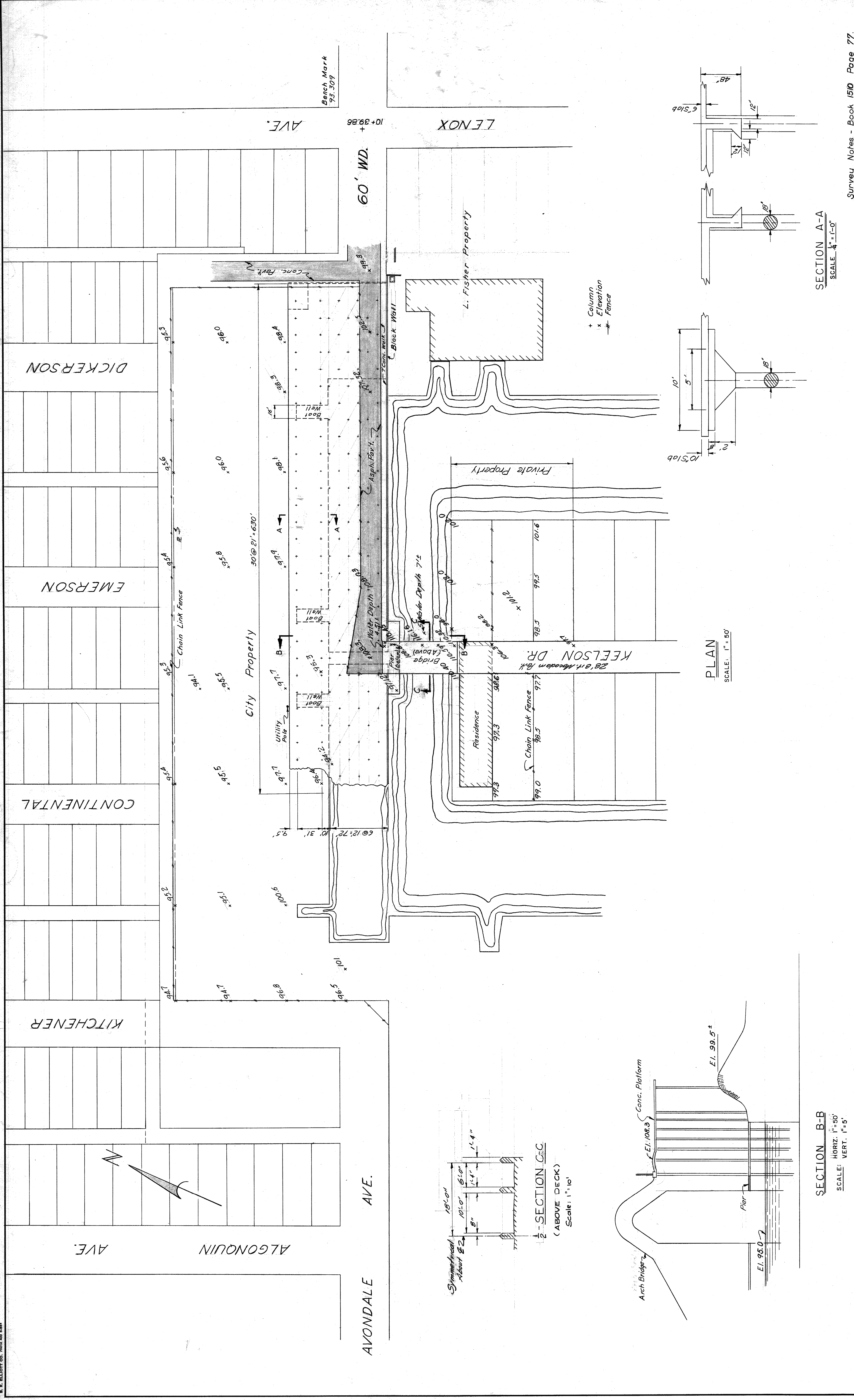
BN240
Grayhaven
Survey Notes
Sh. 3 of 3
9/12/57
G.C.L.

110



SECTION B-B
 SCALE 3/16" = 1'-0"

05'8
 11/5



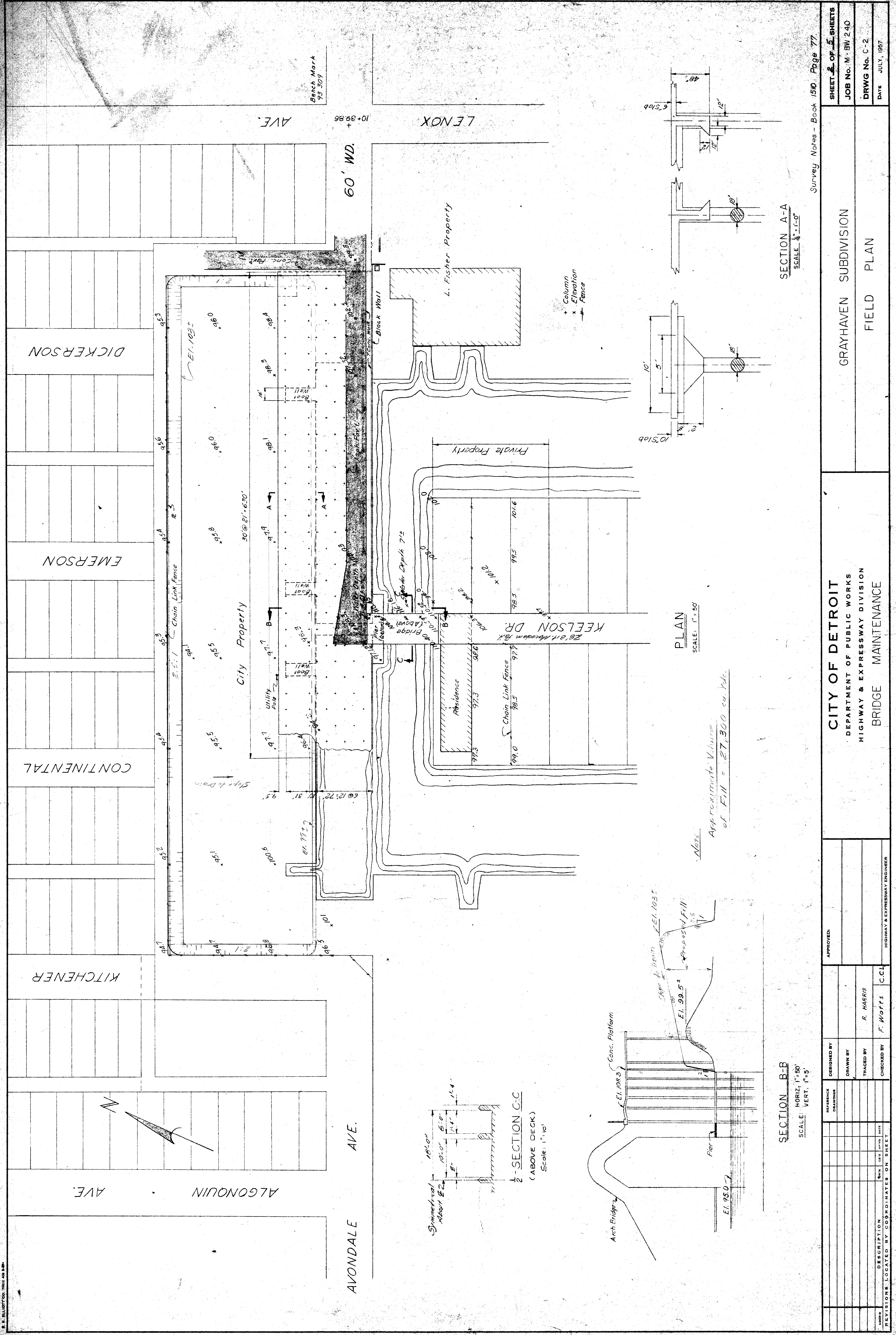
SECTION B-B
 HORIZ. 1" = 50'
 SCALE: VERT. 1" = 5'

SECTION A-A
 SCALE: 1/4" = 1'-0"

Survey Notes - Book 150 Page 77.

SHEET 2 OF 5 SHEETS JOB No. M - BW 240 DRWG No. C-2 DATE JULY, 1957		CITY OF DETROIT DEPARTMENT OF PUBLIC WORKS HIGHWAY & EXPRESSWAY DIVISION BRIDGE MAINTENANCE		GRAYHAVEN SUBDIVISION FIELD PLAN	
DESIGNED BY	APPROVED:	DESIGNED BY	DESIGNED BY	DESIGNED BY	DESIGNED BY
DRAWN BY		DRAWN BY	DRAWN BY	DRAWN BY	DRAWN BY
TRACED BY		TRACED BY	TRACED BY	TRACED BY	TRACED BY
CHECKED BY		CHECKED BY	CHECKED BY	CHECKED BY	CHECKED BY
DATE		DATE	DATE	DATE	DATE
BY		BY	BY	BY	BY
REVISIONS LOCATED BY COORDINATES ON SHEET		REVISIONS LOCATED BY COORDINATES ON SHEET	REVISIONS LOCATED BY COORDINATES ON SHEET	REVISIONS LOCATED BY COORDINATES ON SHEET	REVISIONS LOCATED BY COORDINATES ON SHEET

E. E. ELIOTT CO. 2011 400 1-800



Bench Mark
93 309

AVONDALE AVE. + 10+39.86

60' WD.

LENOX AVE.

DICKERSON

EMERSON

CONTINENTAL

KITCHENER

ALGONQUIN AVE.

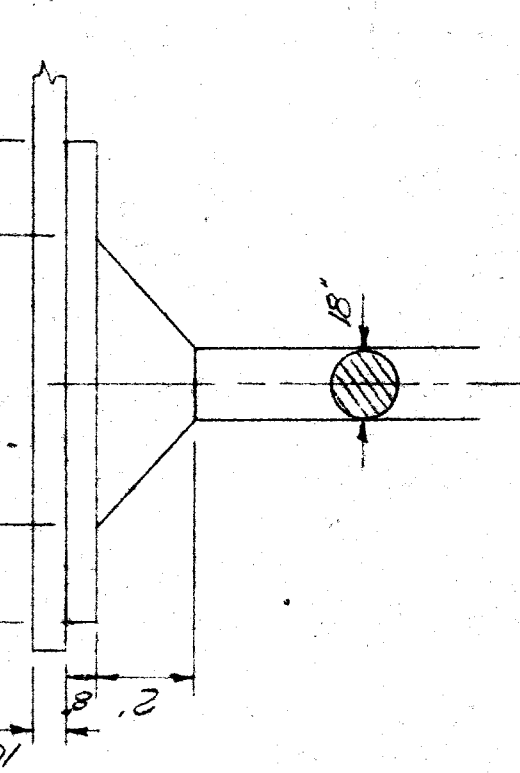
City Property

L. Fisher Property

Private Property

KEELSON DR.
28' 2 1/2' Median R/W

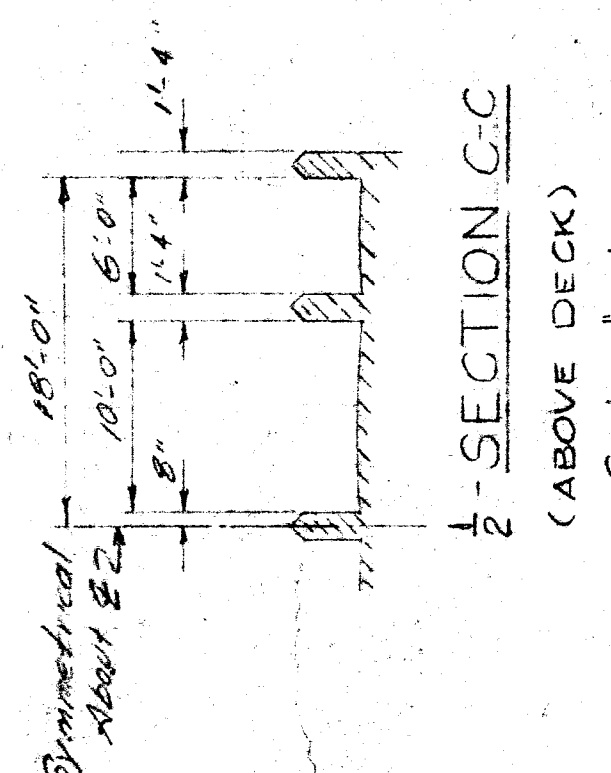
Column
x
Elevation
Fence



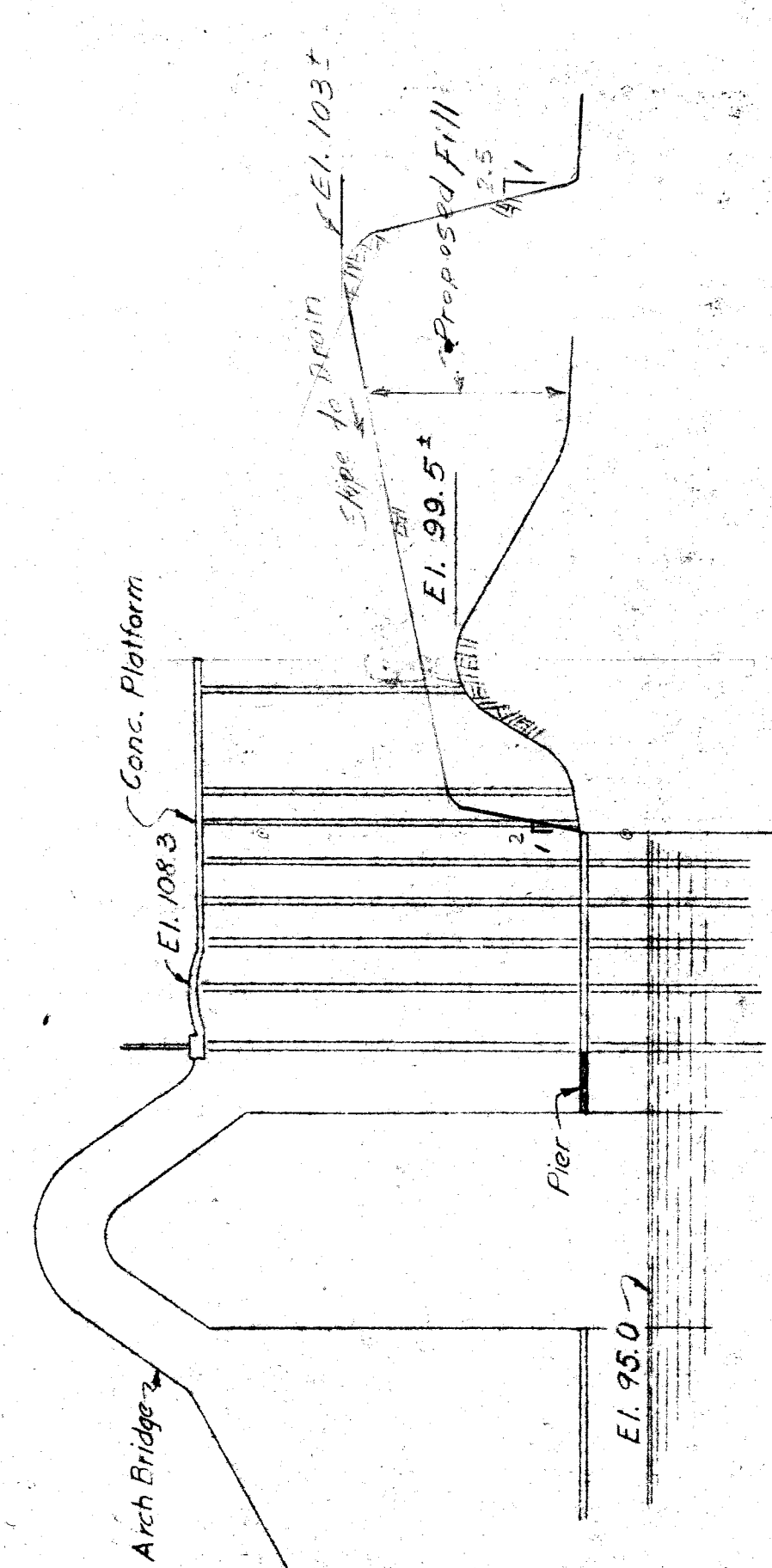
SECTION A-A
SCALE: 1/4" = 1'-0"

PLAN
SCALE: 1" = 50'

NOTE:
Approximate Volume
of Fill = 27,300 cu. Yds.

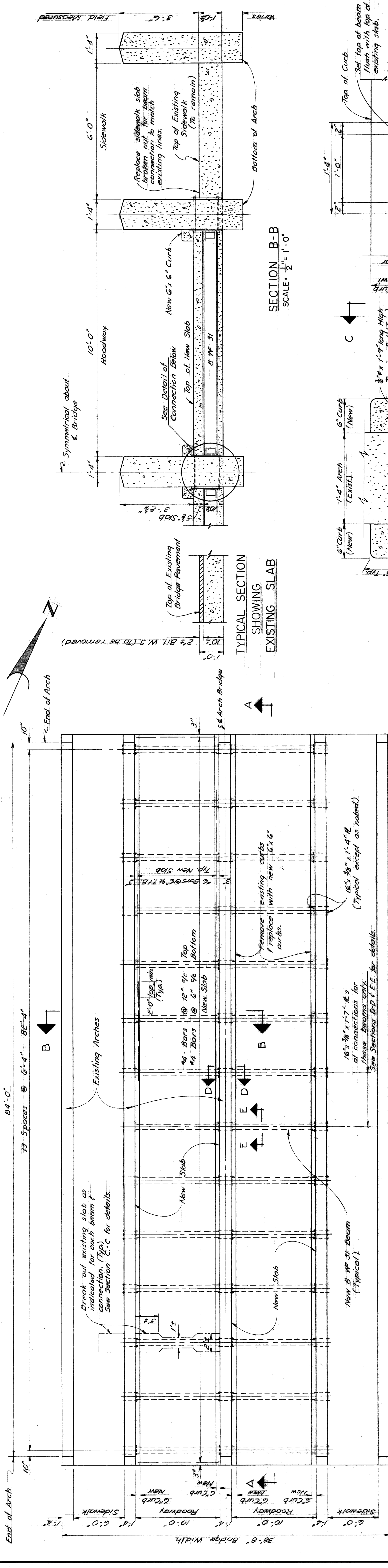


SECTION C-C
(ABOVE DECK)
Scale: 1" = 10'

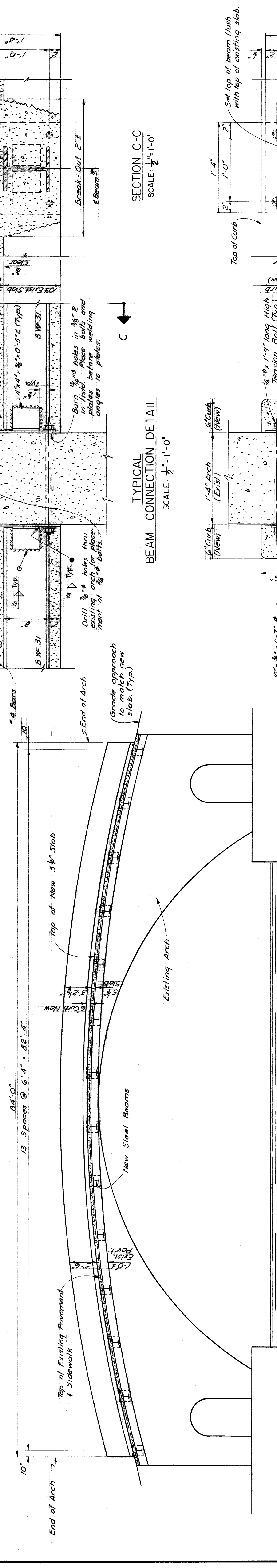


SECTION B-B
SCALE: HORIZ. 1" = 50'
VERT. 1" = 5'

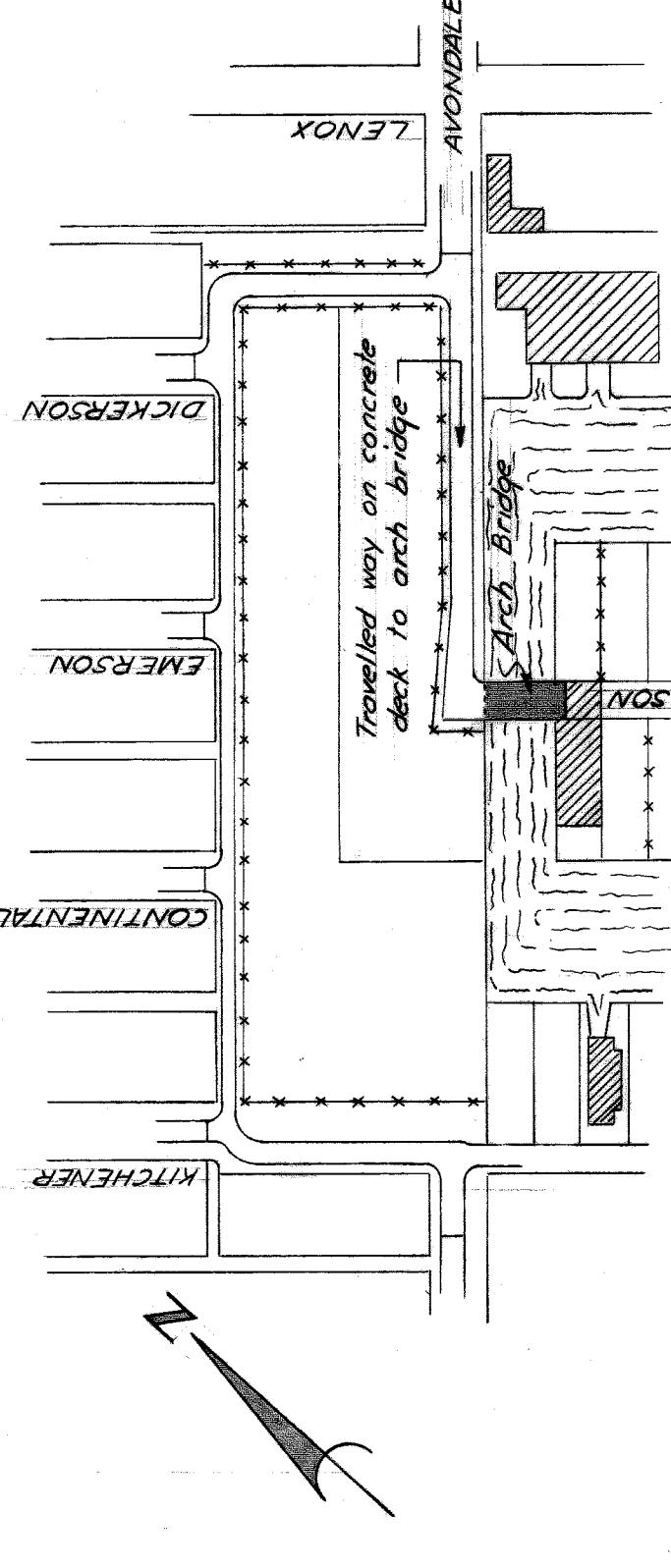
CITY OF DETROIT DEPARTMENT OF PUBLIC WORKS HIGHWAY & EXPRESSWAY DIVISION		GRAYHAVEN SUBDIVISION		FIELD PLAN	
BRIDGE MAINTENANCE		Survey Notes - Book 1510, Page 77		SHEET 2 OF 5 SHEETS	
APPROVED:		JOB No. M. BW 240		DRWG No. C-2	
DESIGNED BY		DRAWN BY		DATE	
TRACED BY		CHECKED BY		JULY, 1957	
REVISIONS LOCATED BY COORDINATES ON SHEET		R. HARRIS		F. Watts	
C.C.L.		HIGHWAY & EXPRESSWAY ENGINEER		C.C.L.	



PLAN SCALE: $\frac{1}{16}'' = 1'-0''$



SECTION A-A SCALE: $\frac{3}{16}'' = 1'-0''$



SITE PLAN SCALE: $1'' = 200'$

ITEM	QUANTITIES	AMOUNT
Wearing Surface Removal	1680 sq. ft.	
Concrete Slab Removal	32 cu. ft.	
Sidewalk Slab Removal	112 cu. ft.	
Curb Removal	336 lin. ft.	
Structural Steel, Fab. & Erect	12200 lbs.	
Concrete Grade A (G.A.)	47.1 cu. yd.	
Reinforcing Steel	43900 lbs.	
Bituminous Wearing Surface	2 Tons	

NO.	DESCRIPTION	DATE	BY	CHECKED BY

DESIGNED BY
DRAWN BY
TRACED BY
CHECKED BY

APPROVED:
A. Harris

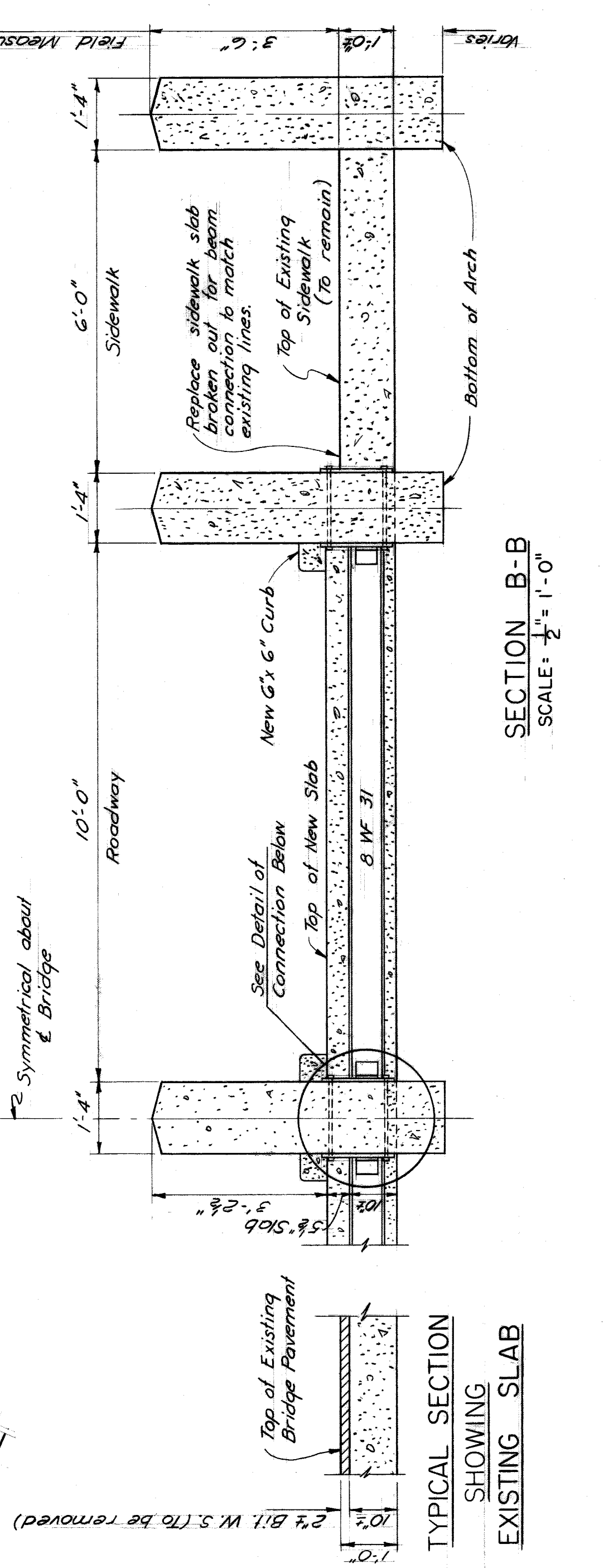
REVISIONS LOCATED BY COORDINATES ON SHEET

HIGHWAY & EXPRESSWAY ENGINEER

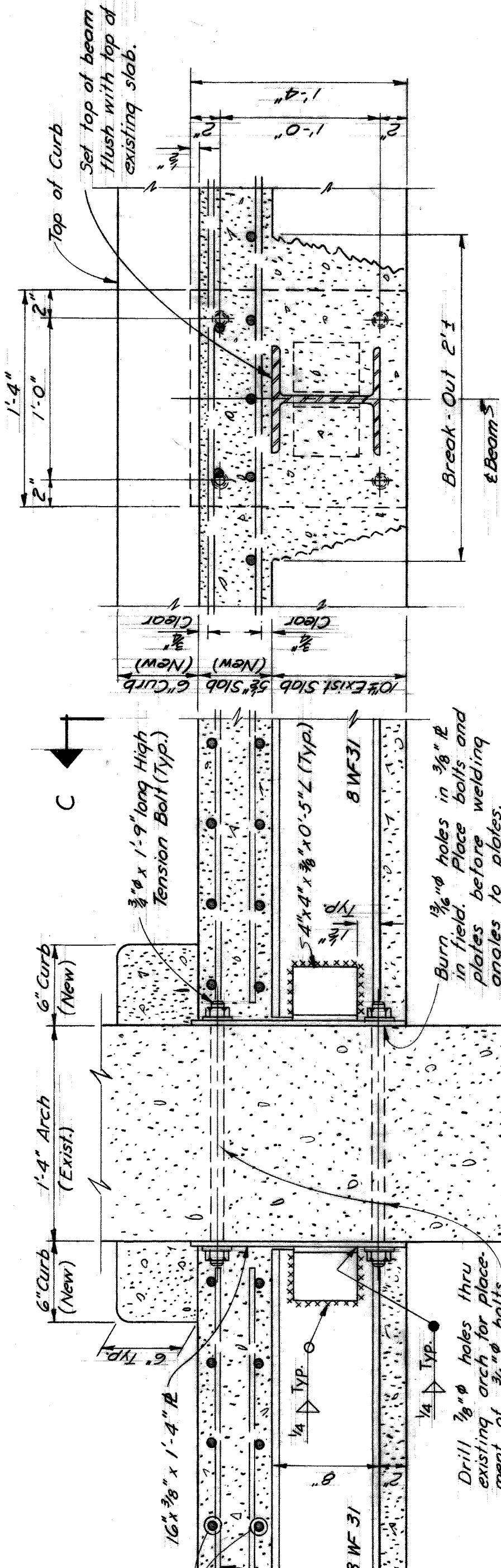
CITY OF DETROIT
DEPARTMENT OF PUBLIC WORKS
HIGHWAY & EXPRESSWAY DIVISION
BRIDGE MAINTENANCE

GRAYHAVEN SUBDIVISION
DECK REPAIRS TO ARCH BRIDGE (BW-240)

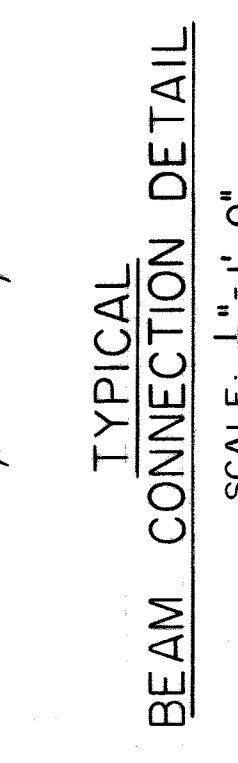
SHEET 1 OF 1 SHEETS
JOB No. M-BW240
DRWG No. C-9
DATE FEB., 1959



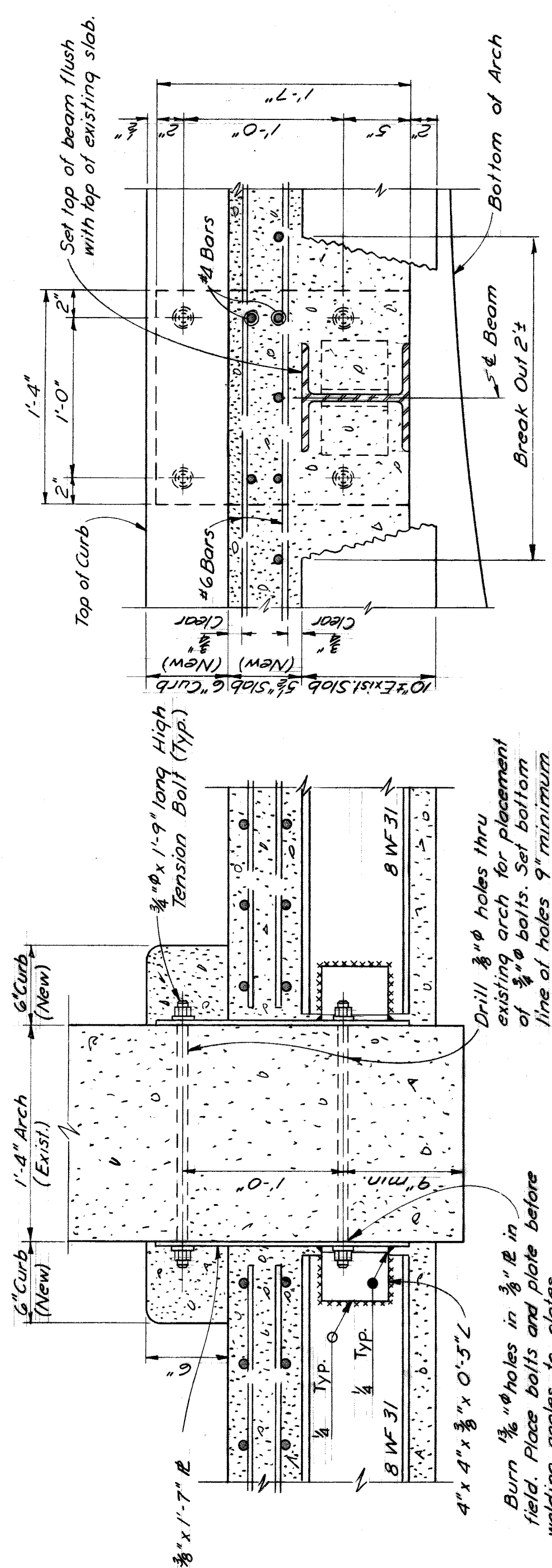
SECTION B-B SCALE: $\frac{1}{2}'' = 1'-0''$



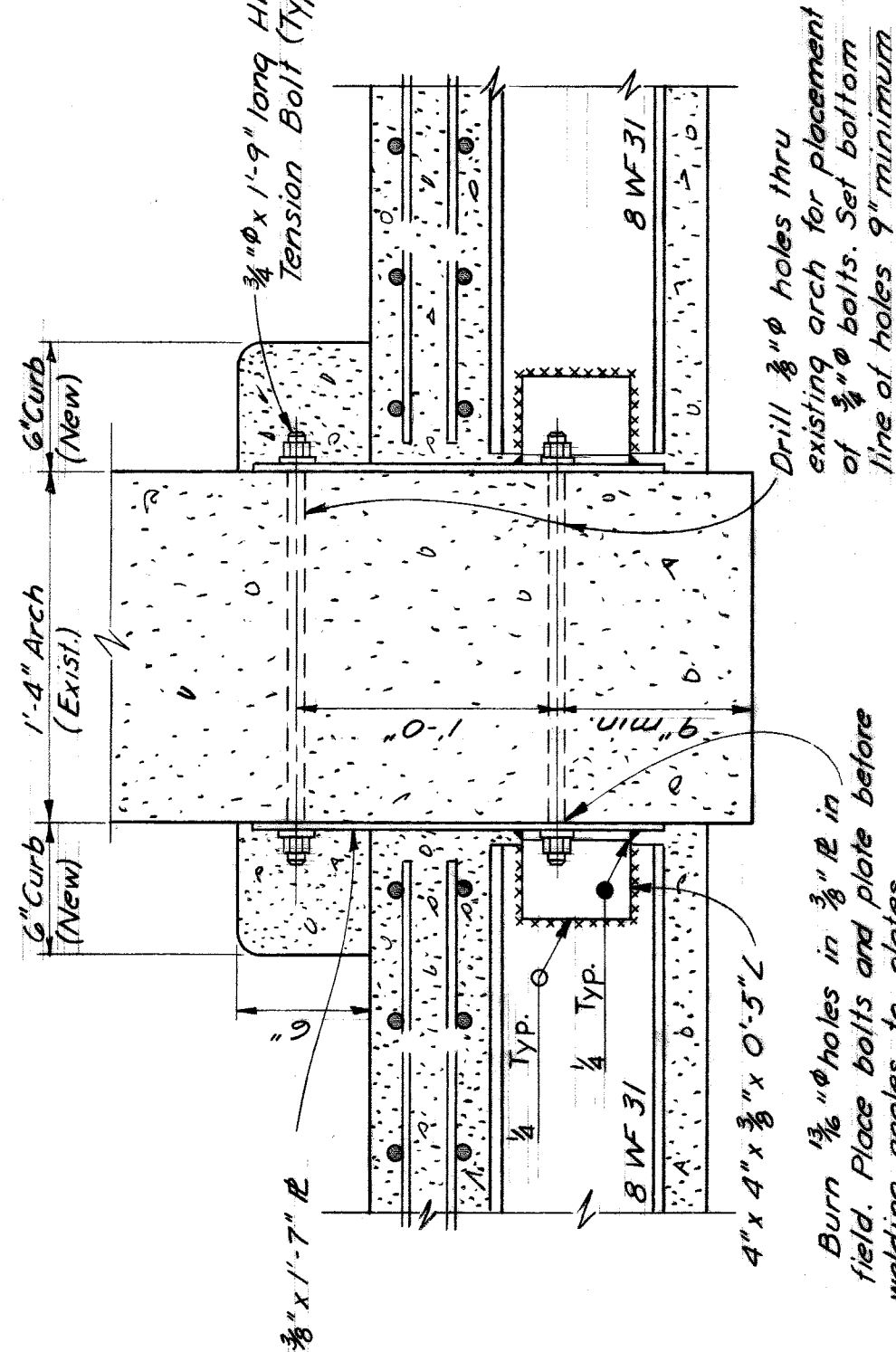
SECTION C-C SCALE: $\frac{1}{2}'' = 1'-0''$



TYPICAL CONNECTION DETAIL SCALE: $\frac{1}{2}'' = 1'-0''$

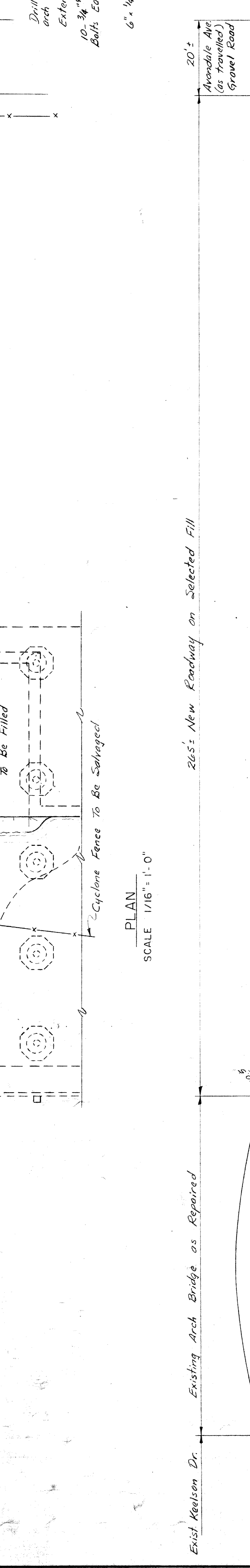
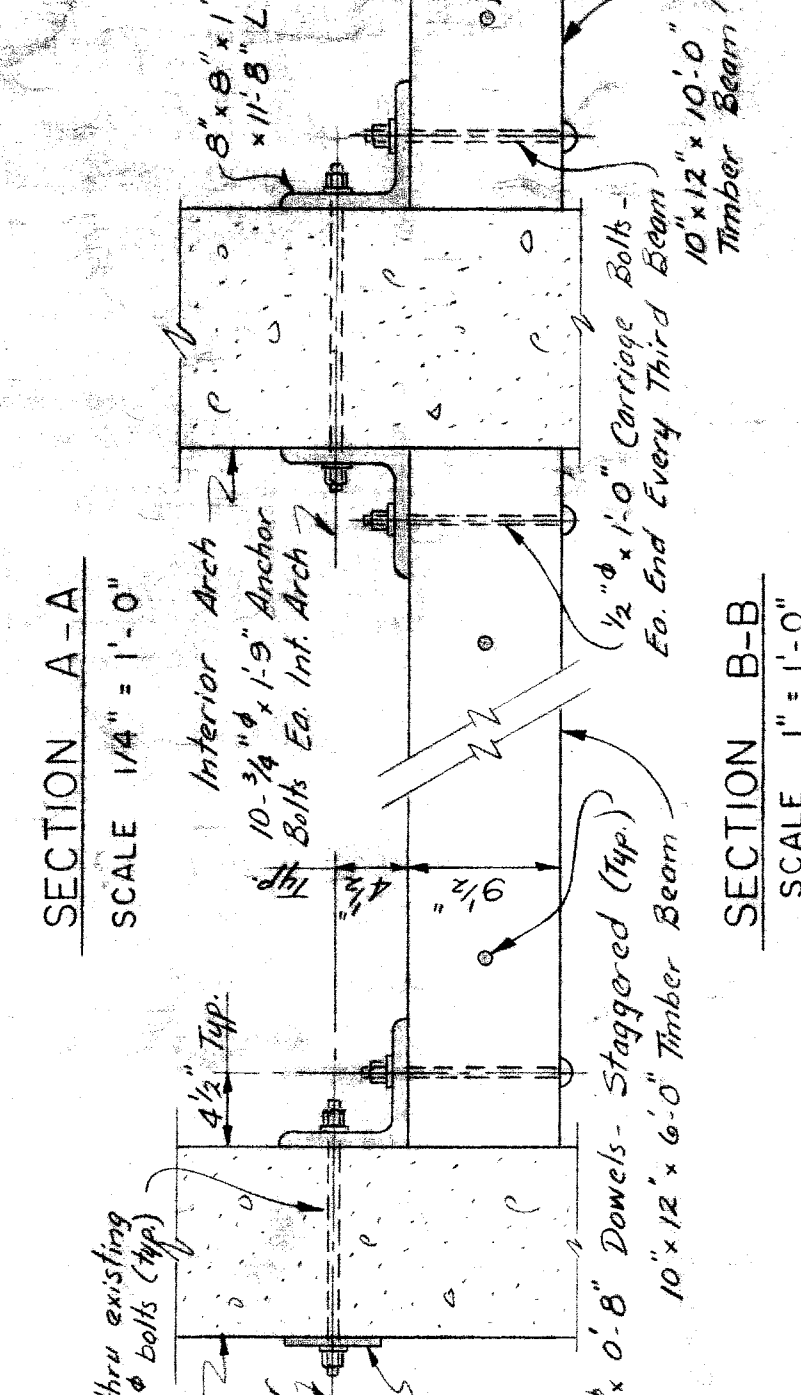
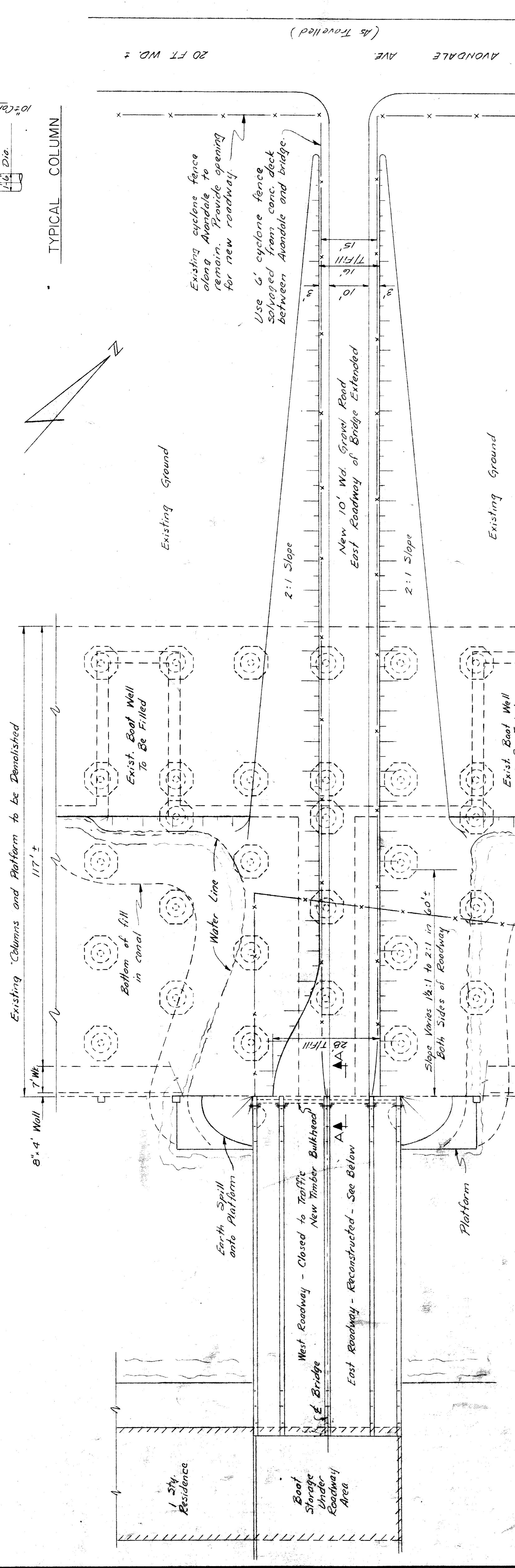
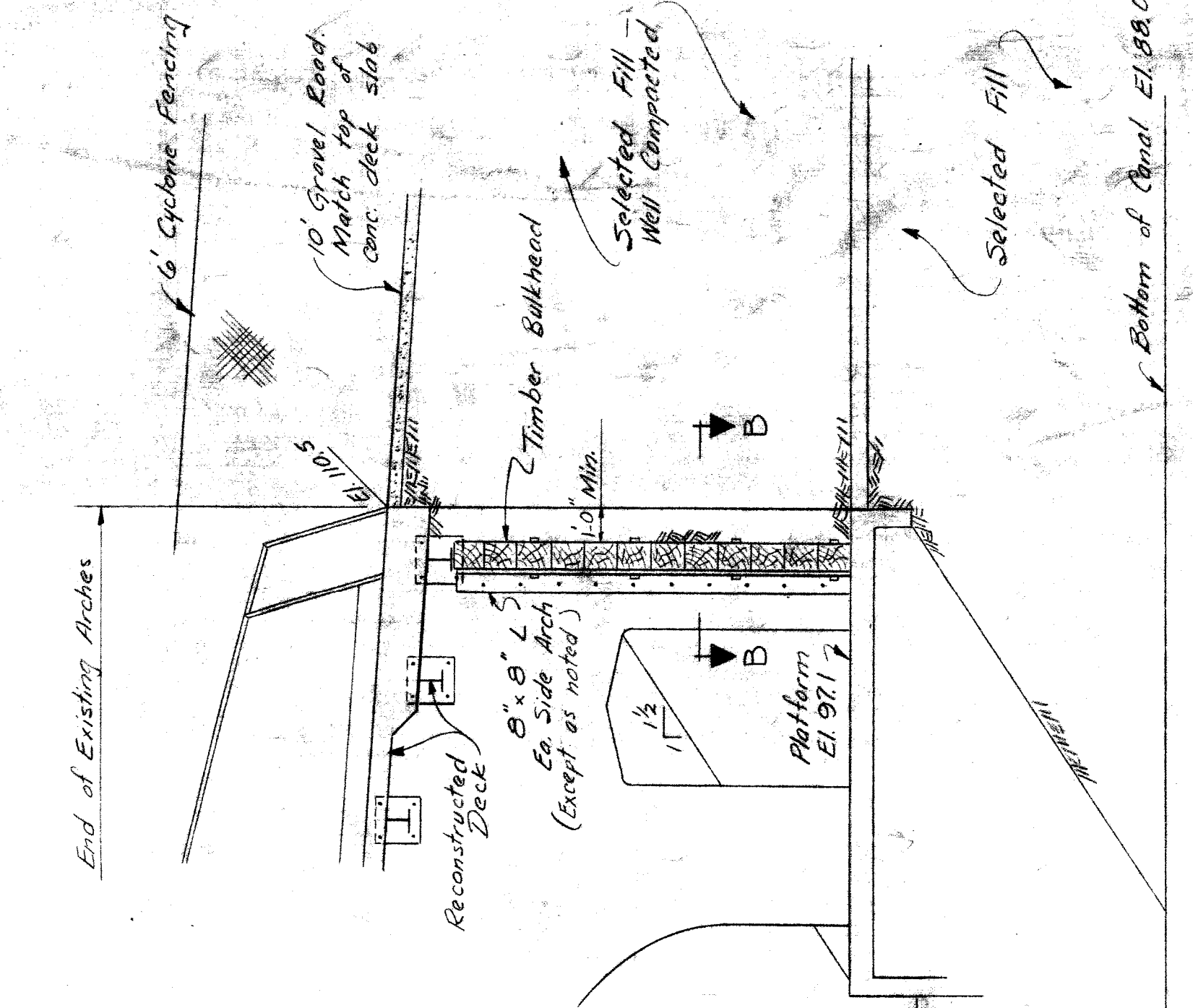
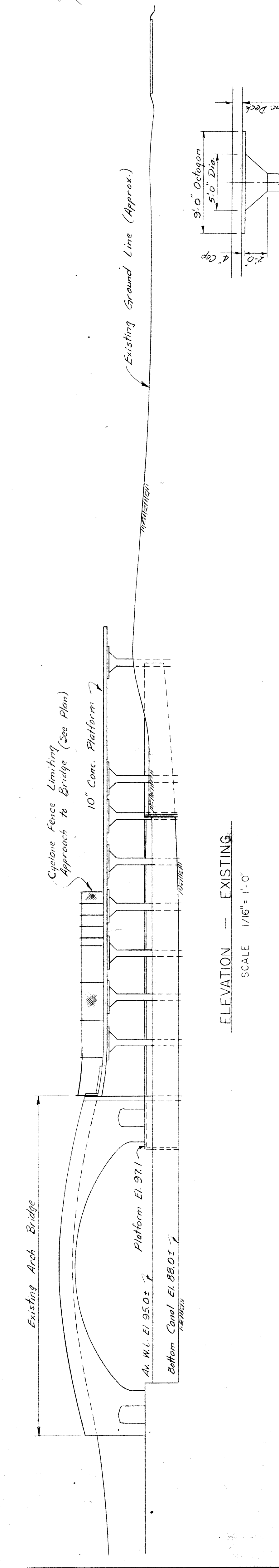
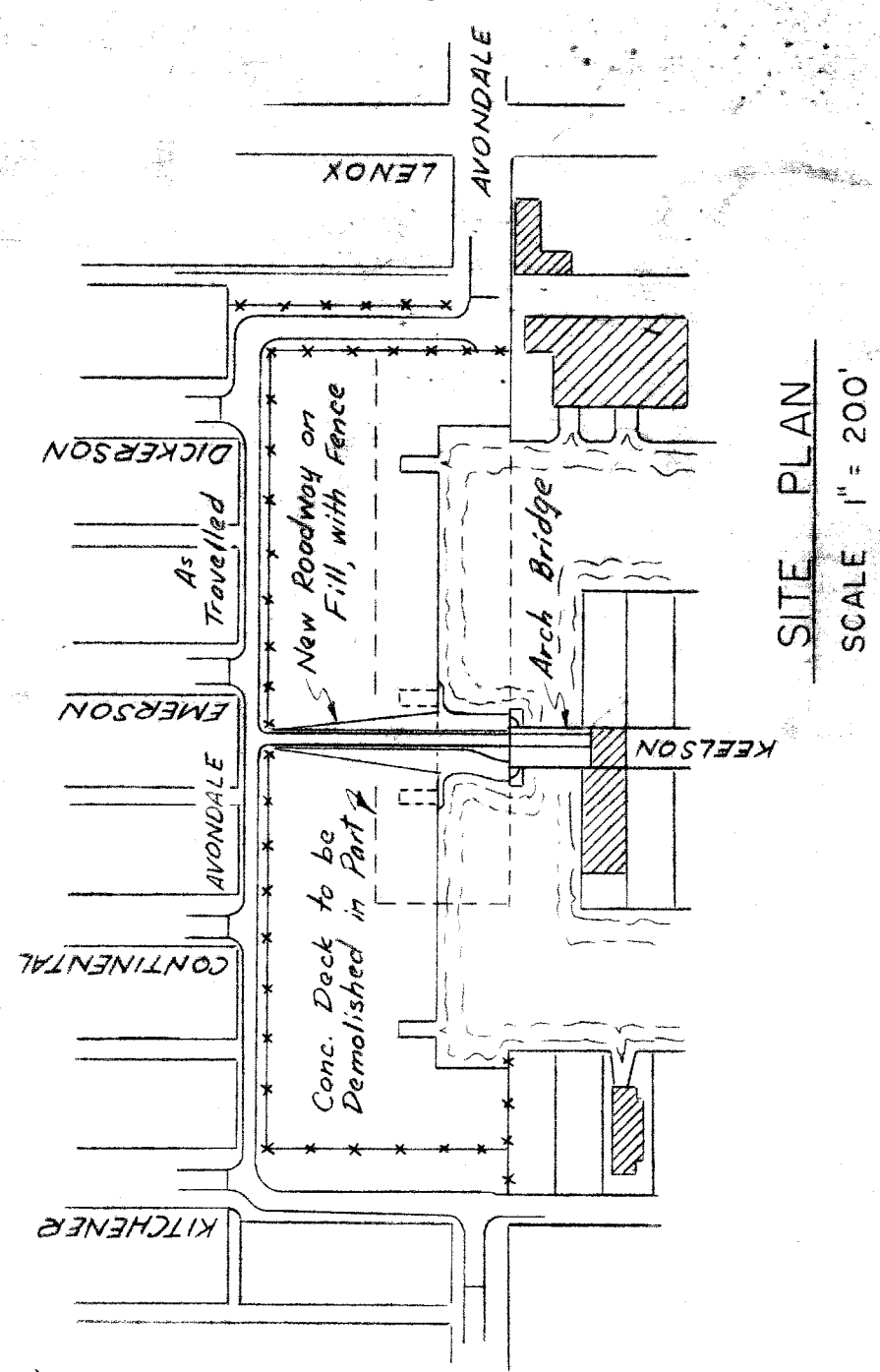


SECTION D-D SCALE: $\frac{1}{2}'' = 1'-0''$

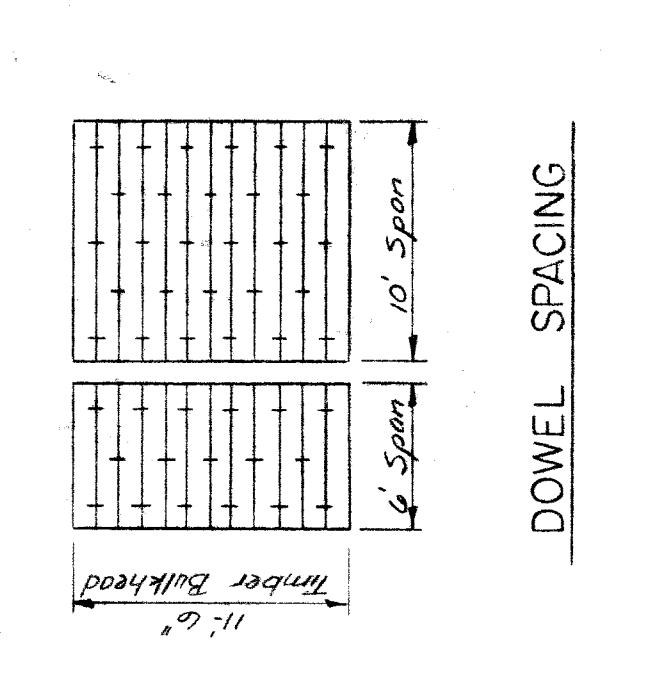


SECTION E-E SCALE: $\frac{1}{2}'' = 1'-0''$

H. K. ELLIOTT CO. 214 E. W. 800 B-27

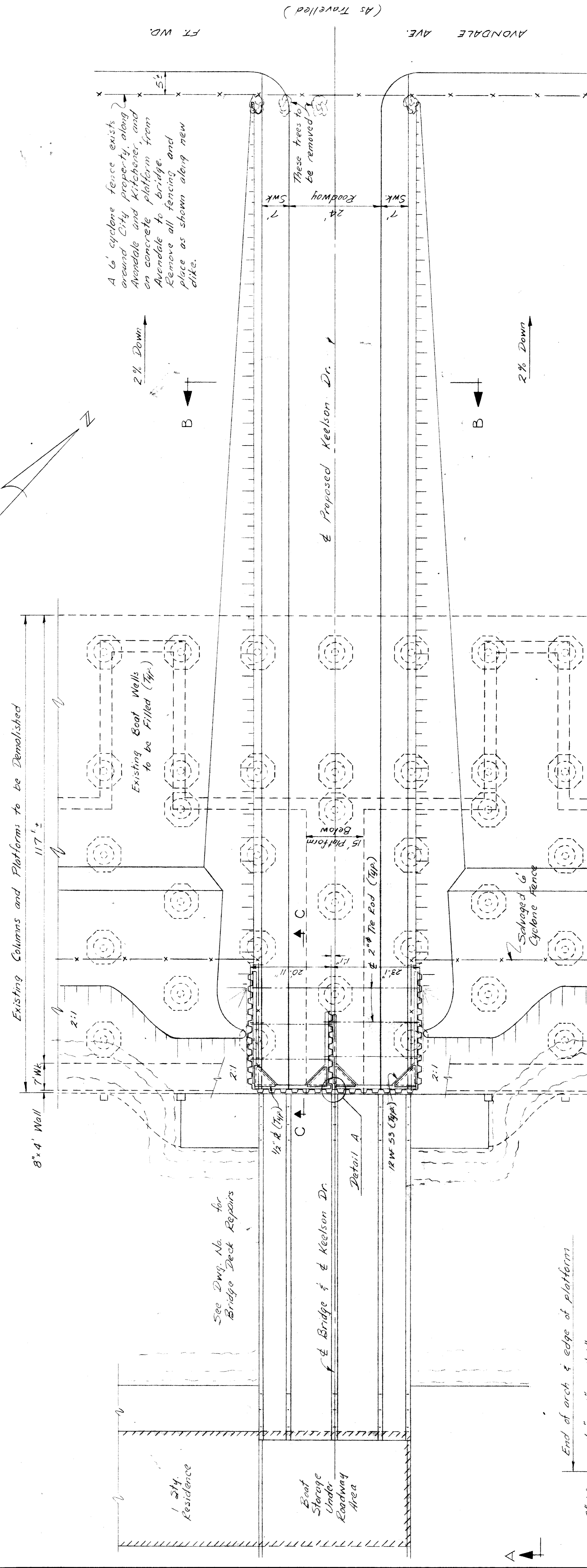


ITEM	QUANTITIES	AMOUNT
Demolition	Lump Sum	4,800.00
Selected Fill Material	4,000 cu yd	4,000.00
Bulkhead Timber	3,700' lbs.	525.00
Structural Steel	20 ea.	20.00
Fence Relocation	3/4" x 1/2" Bolts / nuts, washers	22.00
Grading, Seeding	3/4" x 1/2" Bolts	22.00
10' x 12' x 10'-0" Timber Beams	10' x 12' x 10'-0" Dowels	90.00



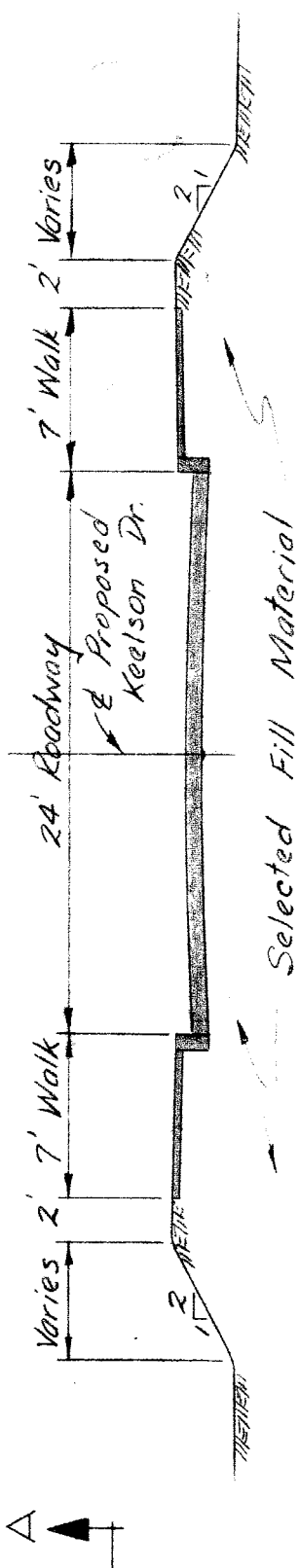
Note: Dimensions and elevations of existing structures were based on field measurements.

CITY OF DETROIT DEPARTMENT OF PUBLIC WORKS HIGHWAY & EXPRESSWAY DIVISION BRIDGE MAINTENANCE		SHEET <u>1</u> OF <u>1</u> SHEETS JOB No. 992 DRWG No. C-12 DATE OCT., 1959
GRAYHAVEN SUBDIVISION PROPOSED ROADWAY TO ARCH BRIDGE (BW-240)		
DESIGNED BY DRAWN BY TRACED BY CHECKED BY	APPROVED: A. HANVON	REVISIONS LOCATED BY COORDINATES ON SHEET DATE BY

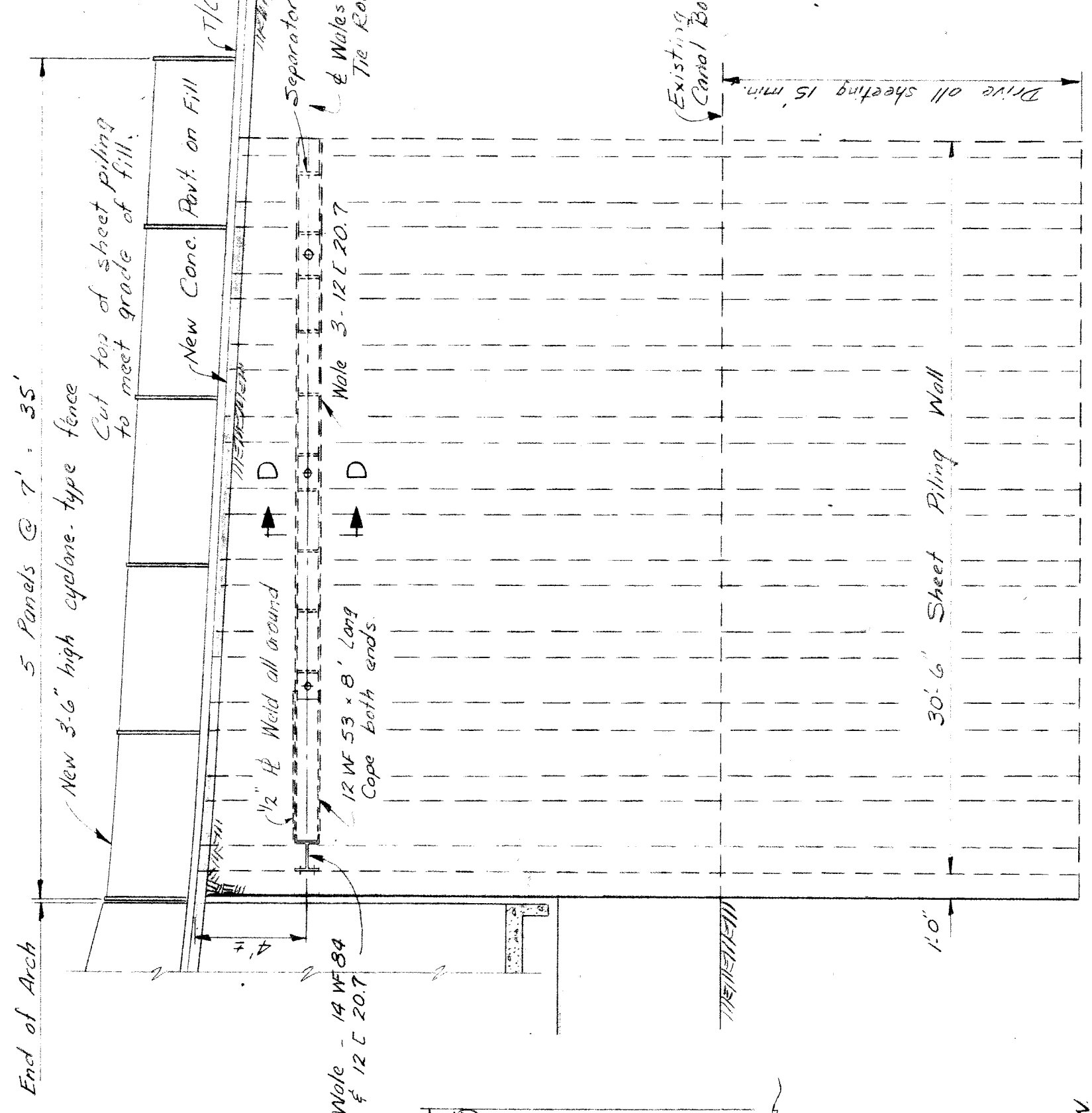


SITE PLAN
SCALE 1" = 200'

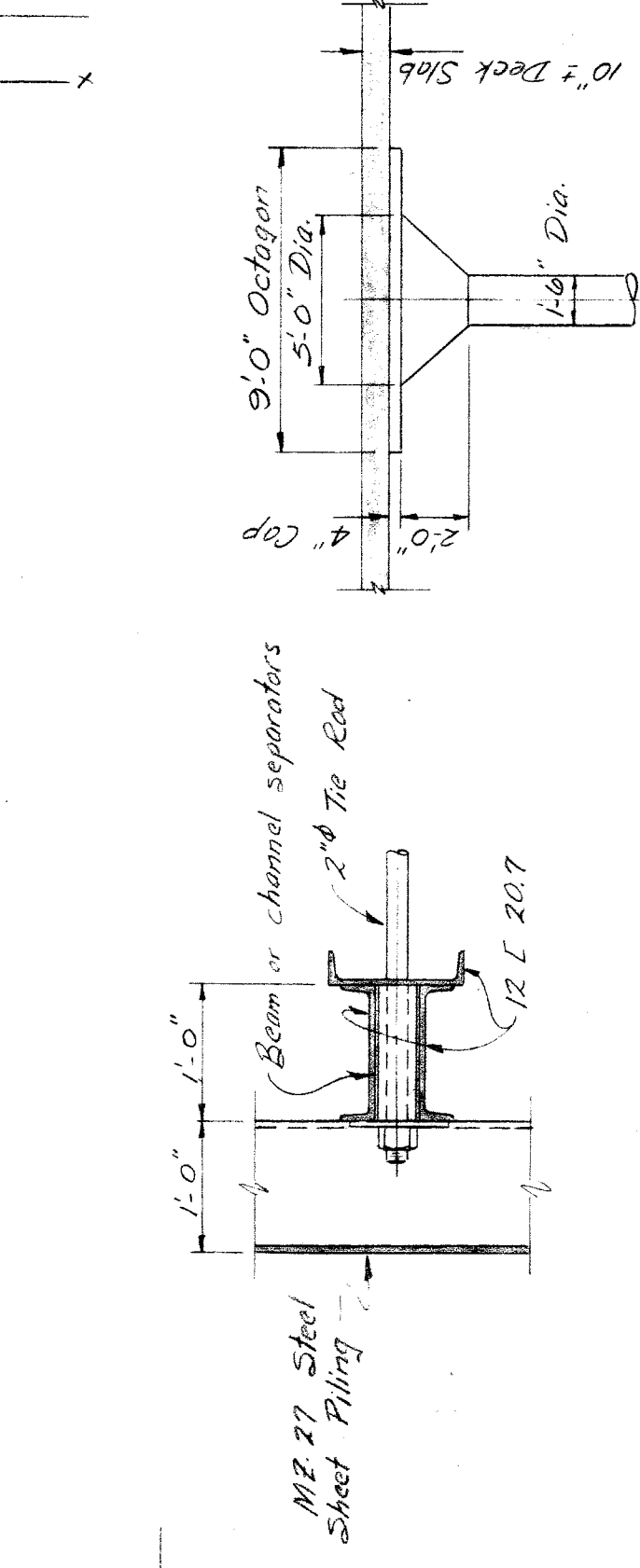
ITEM	QUANTITIES	AMOUNT
Demolition	Lump Sum	4,800 sq. ft.
Steel Sheet Piling		16,000 lbs.
Structural Steel		27,000 cu. yds.
Selected Fill Material		710 sq. yds.
Reinforcement		70 lin. ft.
New Fence, 3' 6" High		70 lin. ft.
Grading, seeding	Lump Sum	415 sq. yds.
Concrete Sidewalk		



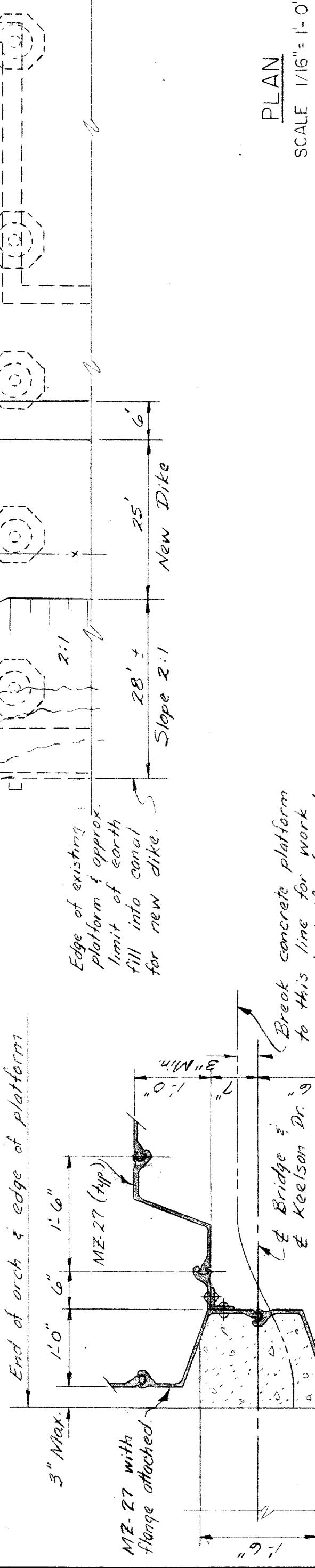
SECTION B-B
SCALE 1/8" = 1'-0"



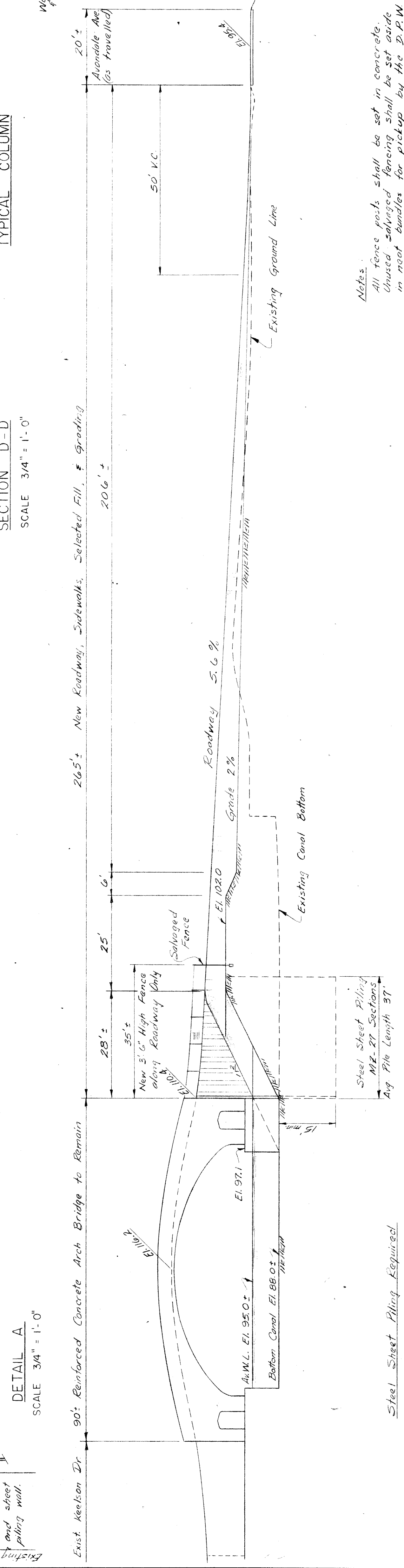
SECTION C-C
SCALE 3/16" = 1'-0"



TYPICAL COLUMN
SECTION D-D
SCALE 3/4" = 1'-0"



PLAN
SCALE 1/16" = 1'-0"



Notes:
All fence posts shall be set in concrete.
Unused salvaged fencing shall be set aside
in neat bundles for pickup by the D.P.W.

SECTION A-A
SCALE 1/16" = 1'-0"

<p>CITY OF DETROIT DEPARTMENT OF PUBLIC WORKS HIGHWAY & EXPRESSWAY DIVISION BRIDGE MAINTENANCE</p>		<p>GRAYHAVEN SUBDIVISION</p>	<p>SHEET — OF — SHEETS JOB No. AP-511-20 DRWG No. C-10 DATE JUNE, 1959</p>
<p>DESIGNED BY DRAWN BY A. HANSON TRACED BY CHECKED BY</p>		<p>APPROVED:</p>	
<p>REFERENCE DRAWINGS</p>		<p>REVISIONS LOCATED BY COORDINATES ON SHEET</p>	