

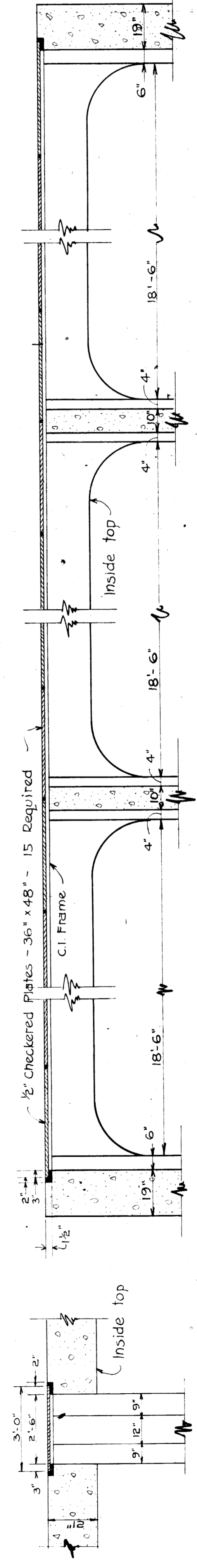
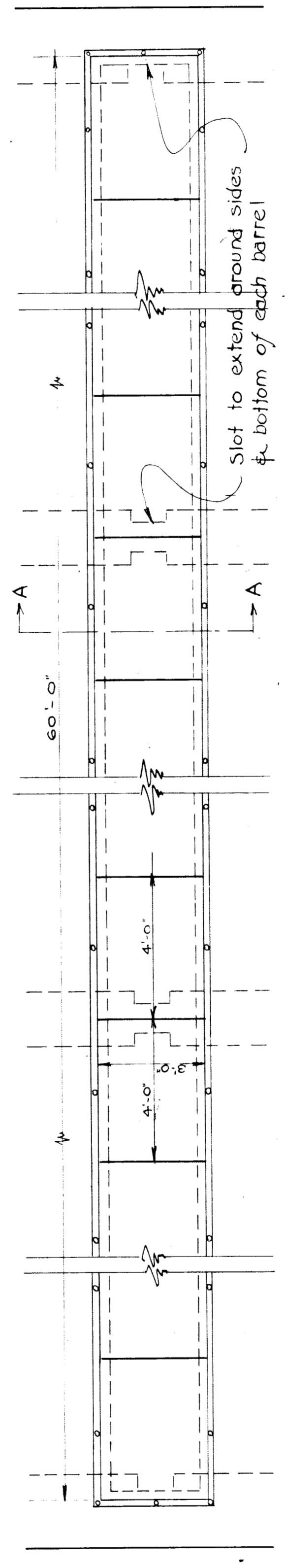
Each bidder is expected to examine the drawings, to visit the locality of the work, to make his own estimate of the facilities and difficulties attending the execution of the work, including pipes, sewers, water mains, conduits, overhead and underground structures, local conditions, etc., all other contingencies, whether or not indicated on the drawings, the location of public utilities is taken from the best available data. City will not be responsible for variations from locations indicated on drawings.

The contractor will be required to construct & remove any coffer dams & do all pumping of water necessary to fully complete the sewer.

During the construction of this sewer the contractor must maintain a by-pass for flow in Connors Creek, including both sanitary & storm water of not less than 400 sq. ft. cross sectional area below elev. 95.0 from Sta. 0+00 to Sta. 0+82.

Contractor must protect existing sewer in alley west of Clairpointe Ave & will be responsible for any damages to same.

Should the condition of the ground anywhere along the line of sewer warrant in the opinion of the City Engineer the use of additional or longer piles, the same are to be placed as & where directed at the unit price per foot in place submitted in contractor's proposal.



**CONNORS CREEK-OUTFALL-SEWER**  
SEC. C.

— DETAILS —

CITY OF DETROIT  
DEPARTMENT OF PUBLIC WORKS  
CITY ENGINEERS' OFFICE

SCALES	COMPUTED	DRAWN	TRACED	CHECKED	DRAWING NO.
As Indicated	W. W.	Baxter	Baxter		1323

SHEET 2 OF 2

BW-237-2