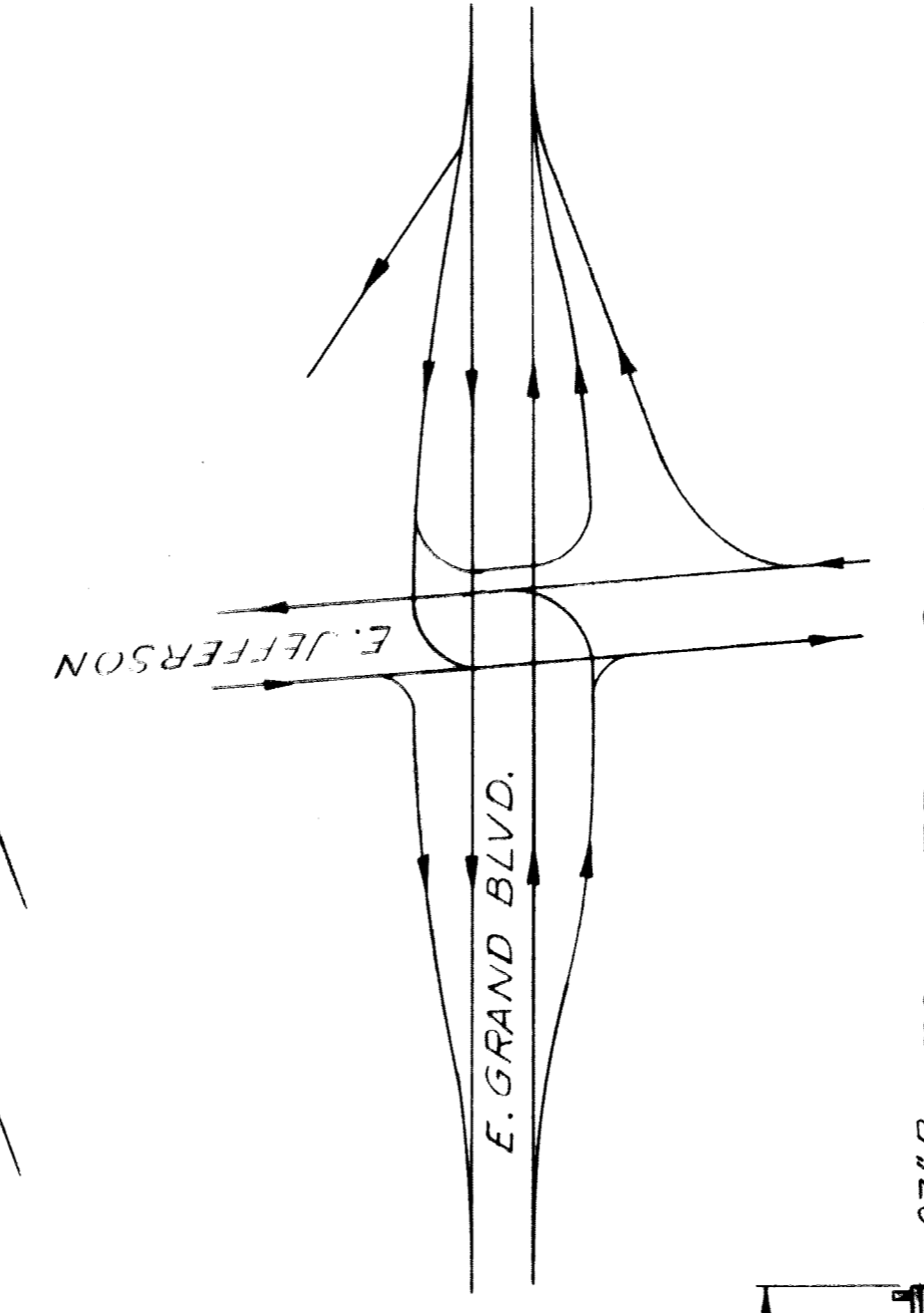
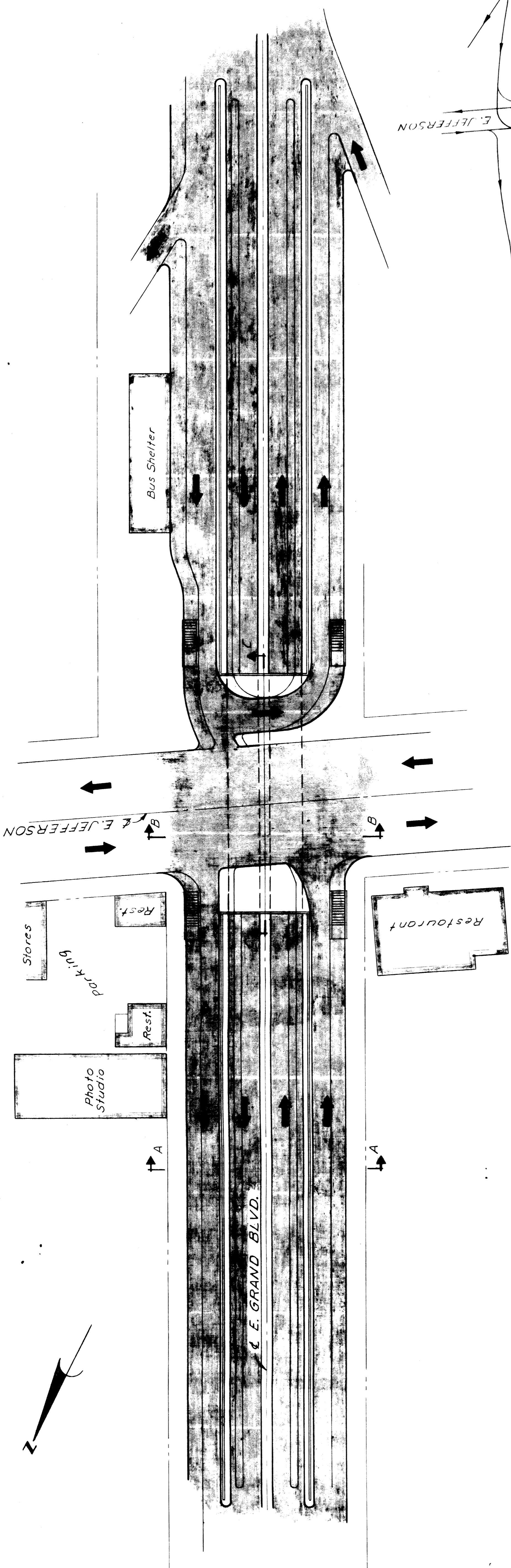


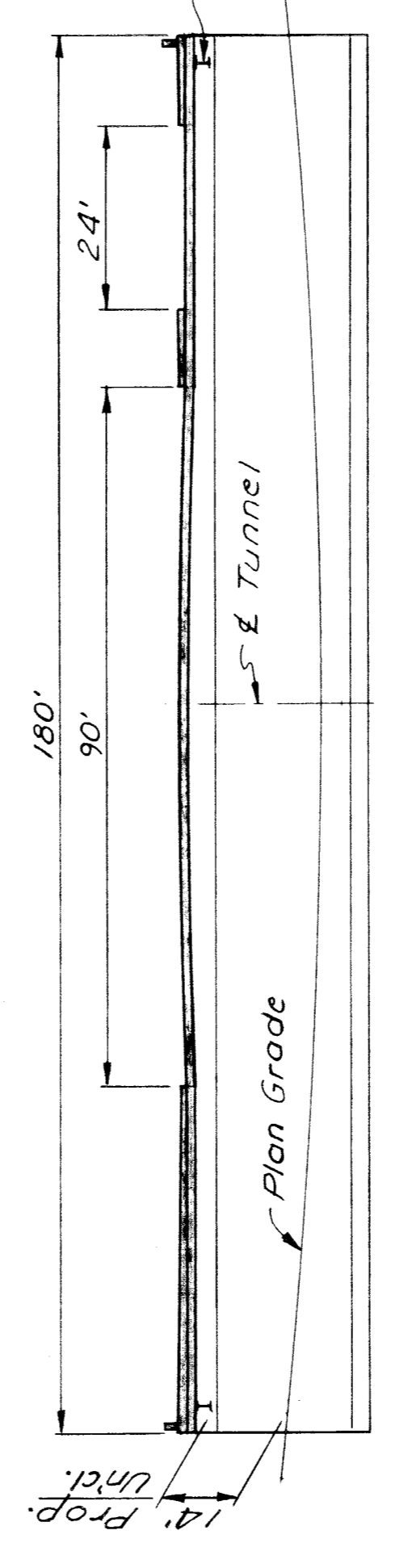
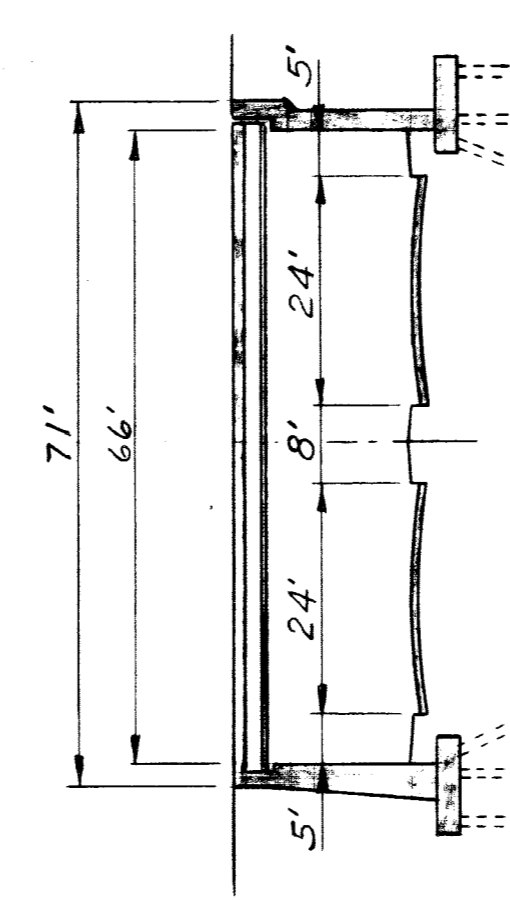
Handwritten signature

BW-233

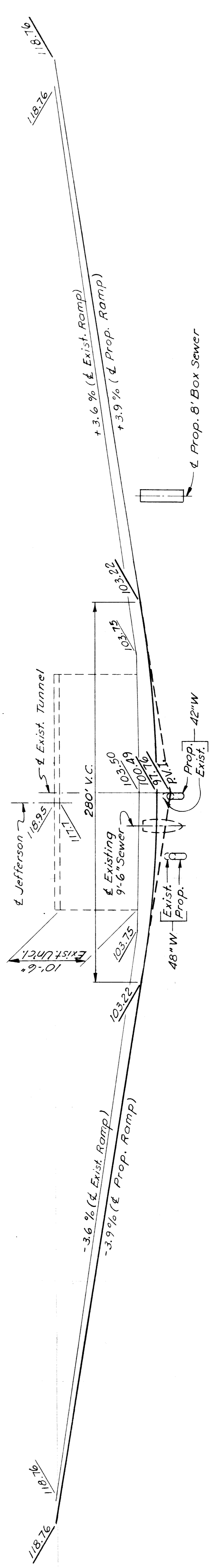
CITY OF DETROIT		EAST GRAND BLVD. - JEFFERSON AVE.		SHEET _____ OF _____ SHEETS
CITY ENGINEERING DIVISION		GRADE SEPARATION		CONTRACT NO. 76-22-11
E. P. M. D.		GENERAL PLAN		DRWG NO. _____
APPROVED:		DESIGNED BY:		DATE 6-18-76
DRAWN BY: <i>MMB</i>		DRAWN BY:		
TRACED BY:		TRACED BY:		
CHECKED BY:		CHECKED BY:		
REFERENCE DRAWINGS	DESCRIPTION	DATE	DATE	
	REVISIONS LOCATED BY COORDINATES ON SHEET			



PLAN
Scale: 1"=40'

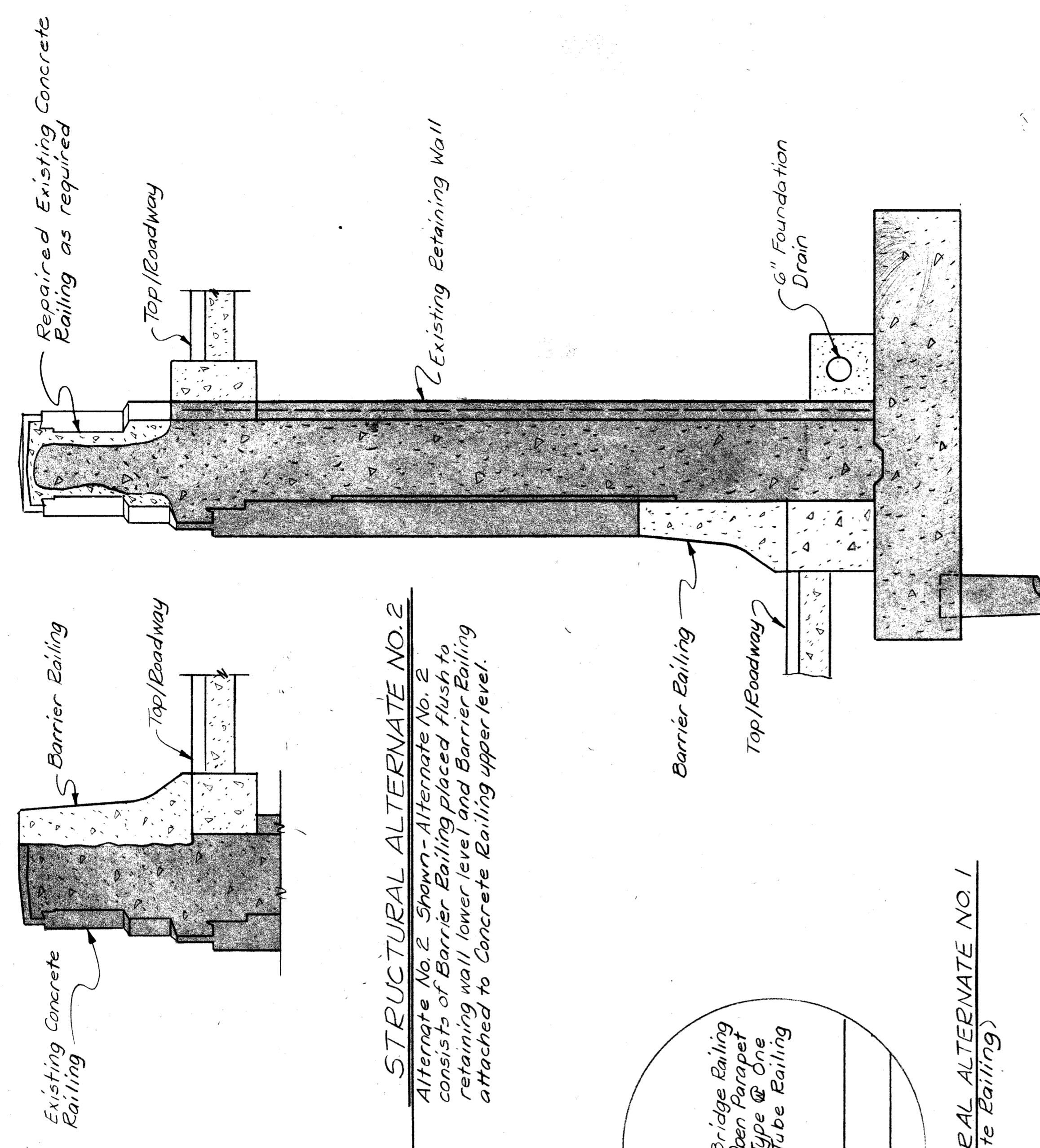
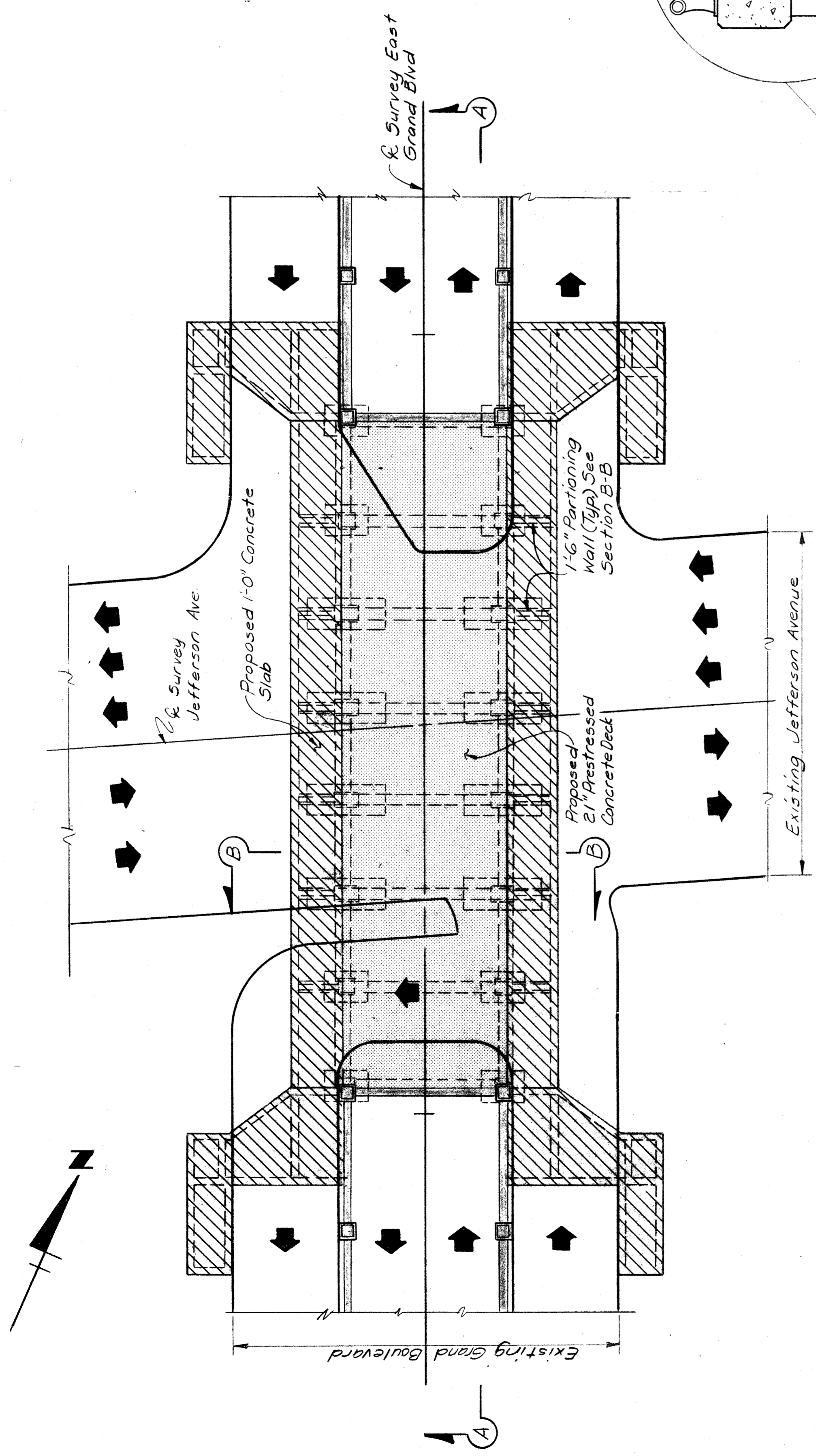


SECTION C-C



PROFILE ALONG & EXIST. E. GRAND BLVD.
Scale: 1"=40' Horiz., 1"=10' Vert.

SHEET OF SHEETS		CONTRACT NO. AD 2056		DRWG NO.	
E. GRAND BOULEVARD-E. JEFFERSON		GRADE SEPARATION		PROPOSED PLAN, PROFILE AND CROSS SECTIONS	
CITY OF DETROIT DEPARTMENT OF PUBLIC WORKS CITY ENGINEERS OFFICE				FOR DEPARTMENT OF PUBLIC WORKS	
DESIGNED BY	M. C.	APPROVED:			
DRAWN BY	R. Harris				
TRACED BY					
CHECKED BY	J. Mc Guire				
DESCRIPTION					
REVISIONS LOCATED BY COORDINATES ON SHEET					



STRUCTURAL ALTERNATE NO. 2
Alternate No. 2 Shown - Alternate No. 2 consists of Barrier Railing placed flush to retaining wall lower level and Barrier Railing attached to Concrete Railing upper level.

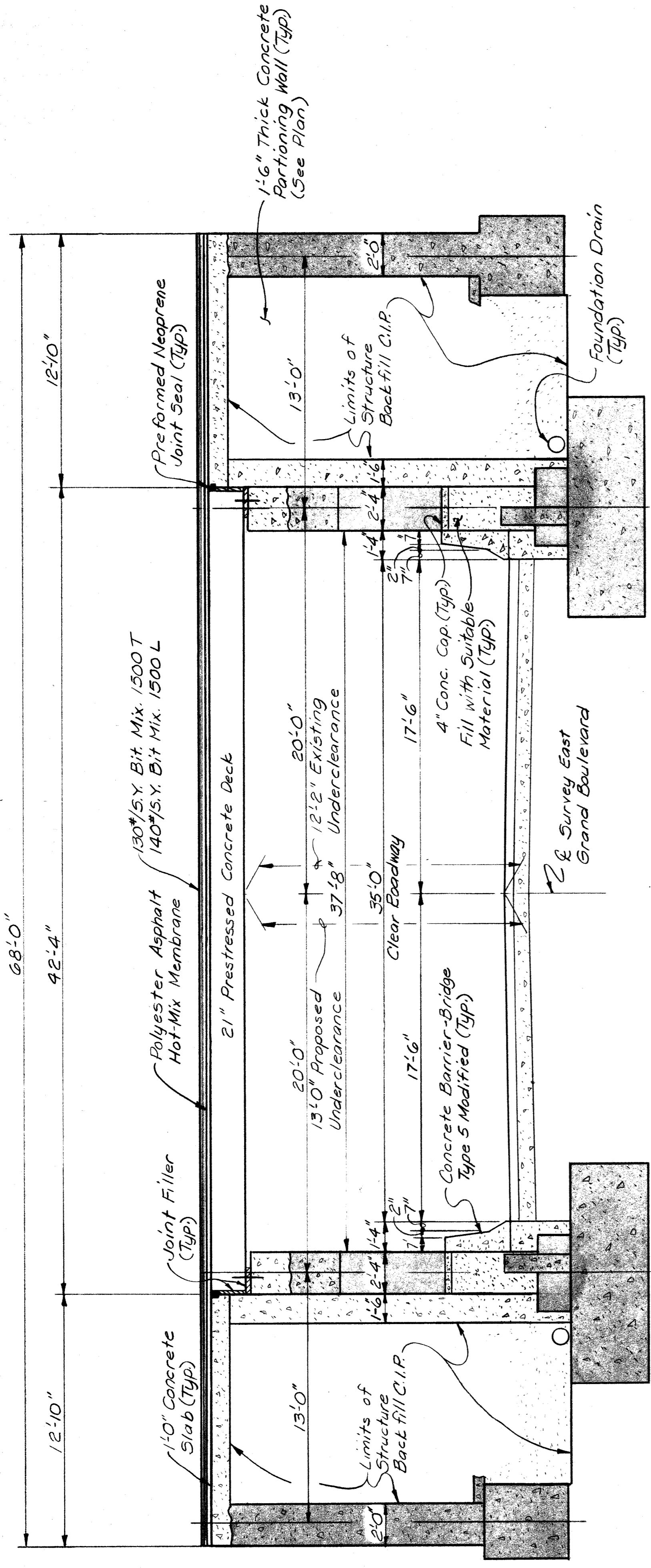
STRUCTURAL ALTERNATE NO. 1
(Alternate Railing)

- LEGEND**
- Existing Concrete
 - Existing Concrete in Section
 - New Concrete
 - New Concrete in Section
 - Limits of 21" Prestressed Concrete Deck
 - Limits of 1'-0" Concrete Slab over Earth Filled Pedestrian Walkway Area

STUDIES FOR
RENOVATION OF
BW - 233
NOT DONE
8/2/84 TRK

SECTION A-A
Option A

DSGN BY:	M.D.H.	4-83	REVISIONS			
DRN BY:						
CHKD BY:						
APP'D BY:						
CITY OF DETROIT				SNELL ENVIRONMENTAL GROUP		
STUDY "A"				Renovation of Jefferson Avenue Bridge over East Grand Boulevard, City of Detroit, Michigan		
Plan, Section A-A, & Retaining Wall Sections				SCALE:		
				DRN. NO: 1 of 2		



SECTION B-B

DESIGN BY:
DRAWN BY: M.D.H.
CHECKED BY:
APPROVED BY:

4-93

REVISIONS

CITY OF DETROIT



STUDY "A"
Renovation of Jefferson Avenue Bridge
over East Grand Boulevard, City of Detroit
Michigan

Section B-B

SCALE:

DRN. NO: 2 of 2