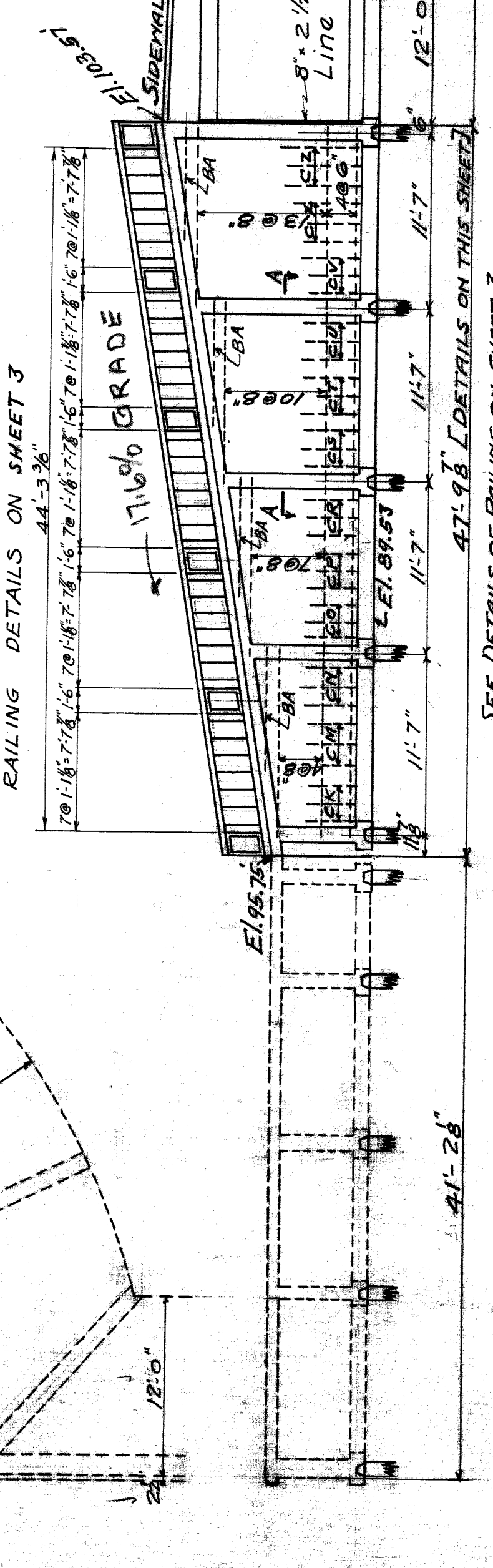
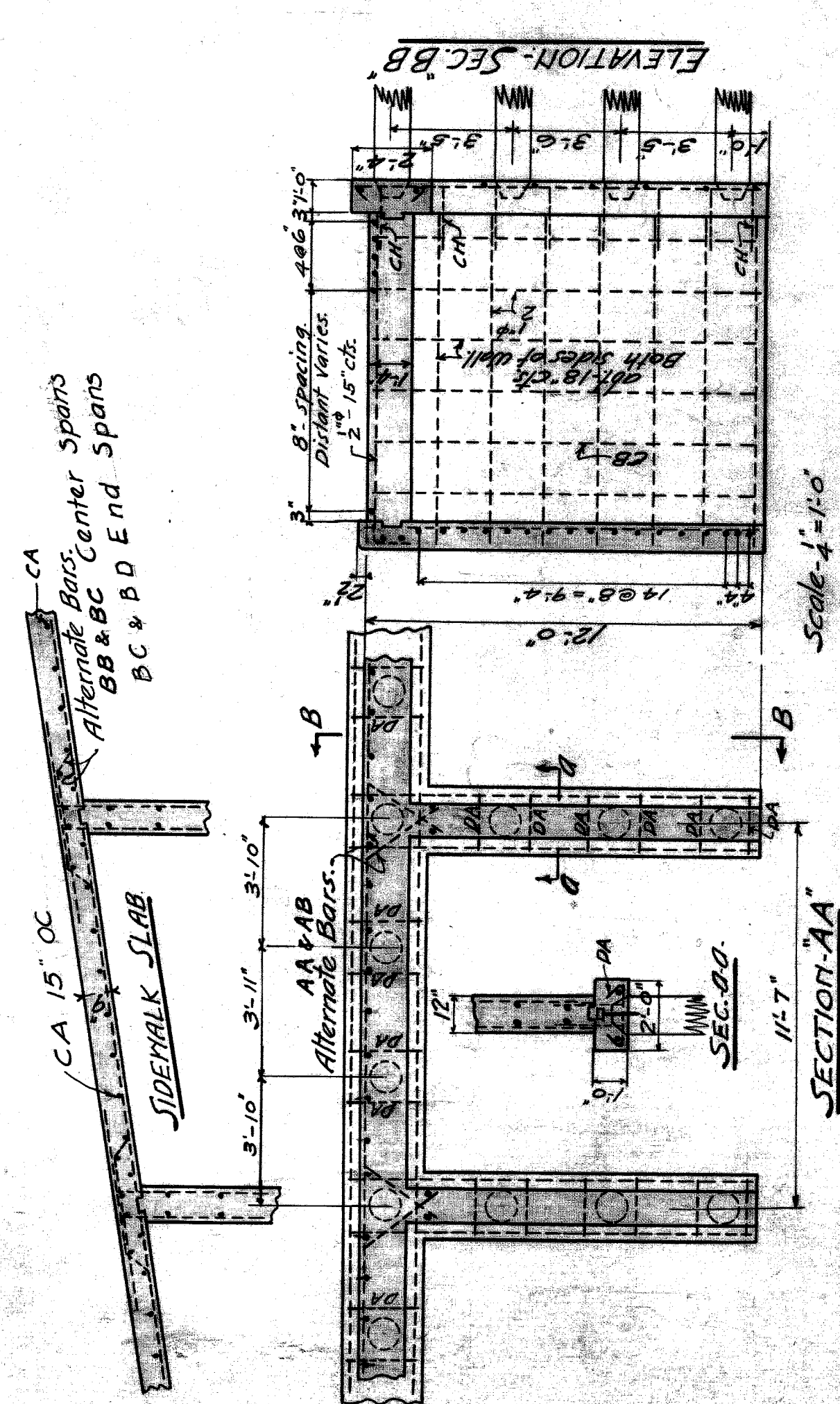


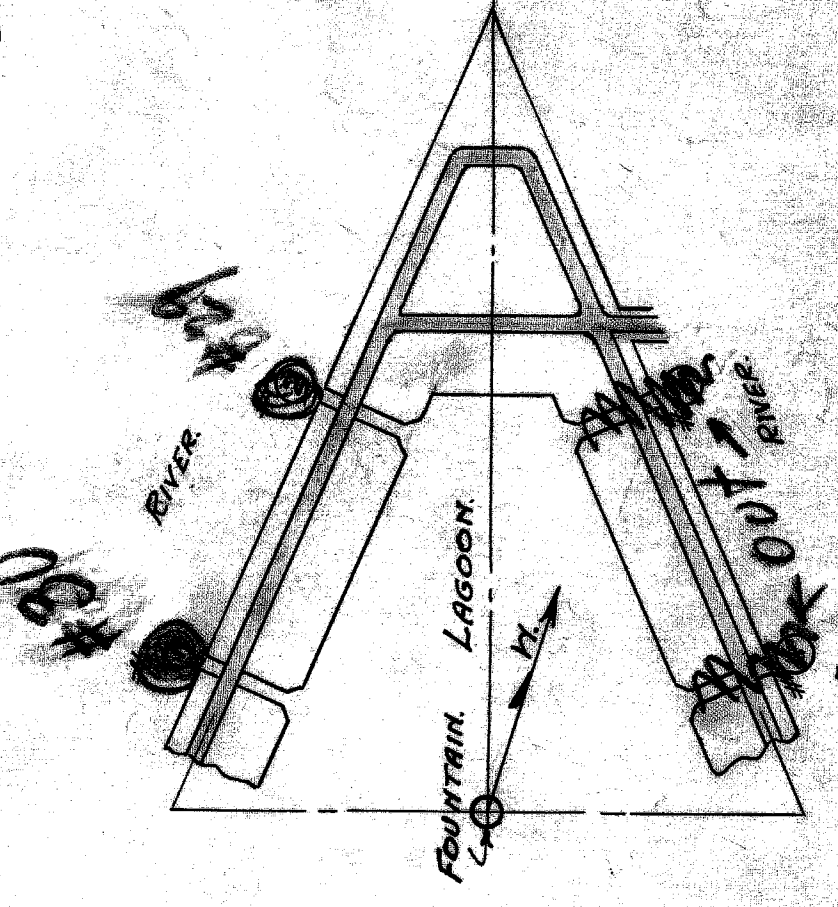
PLAN
Scale 3/8"=1'-0"



ELEVATION
Scale 3/8"=1'-0"



SECTION-AA
Scale 1/2"=1'-0"



Location of Bridges
Reinforcing steel 11459"
1-2 1/2% Concrete 126 Cu Yards
1-1 1/2% Concrete 8 Cu Yards

LIST OF BARS - APPROACHES FOR ONE BRIDGE

NO	REQ. SIZE	LENGTH	MARK	LOCATION	BEND	DRAWING	NO. BARS	SIZE	MARK	LOCATION	BEND	DRAWING
54	1 1/4"	15	0	AA	Face rail		6	11	0	CS	Face rail	Vertical
55	1 1/4"	18	6	AB	"		6	11	6	CU	"	"
56	5/8"	8	0	BA	"		6	11	0	CU	"	"
57	5/8"	15	6	BB	"		6	11	6	CU	"	"
58	5/8"	18	6	BC	"		6	11	6	CU	"	"
104	3/4"	11	10	CA	"		6	14	0	CX	"	"
120	1 1/8"	11	8	CB	"		20	12	0	CW	"	"
28	5/8"	5	0	CC	"		12	17	0	CY	"	"
28	5/8"	7	1	CD	"		92	3	2	DA	"	"
28	5/8"	9	0	CE	"		32	3	13	DB	"	"
28	5/8"	11	0	CF	"		18	2	13	DD	"	"
28	5/8"	12	0	CG	"		70	2	3	EA	"	"
212	2	6	CH	"	"		36	"	11	4	CAC	"
6	"	7	6	CI	"		60	"	3	5	CAD	"
6	"	8	0	CJ	"		"	"	"	"	"	"
6	"	9	6	CK	"		"	"	"	"	"	"
6	"	10	0	CL	"		"	"	"	"	"	"
6	"	10	0	CM	"		"	"	"	"	"	"
6	"	10	0	CN	"		"	"	"	"	"	"
6	"	10	0	CO	"		"	"	"	"	"	"
6	"	10	0	CP	"		"	"	"	"	"	"
6	"	10	0	CQ	"		"	"	"	"	"	"
6	"	10	0	CR	"		"	"	"	"	"	"

REINFORCEMENT CONTINUED

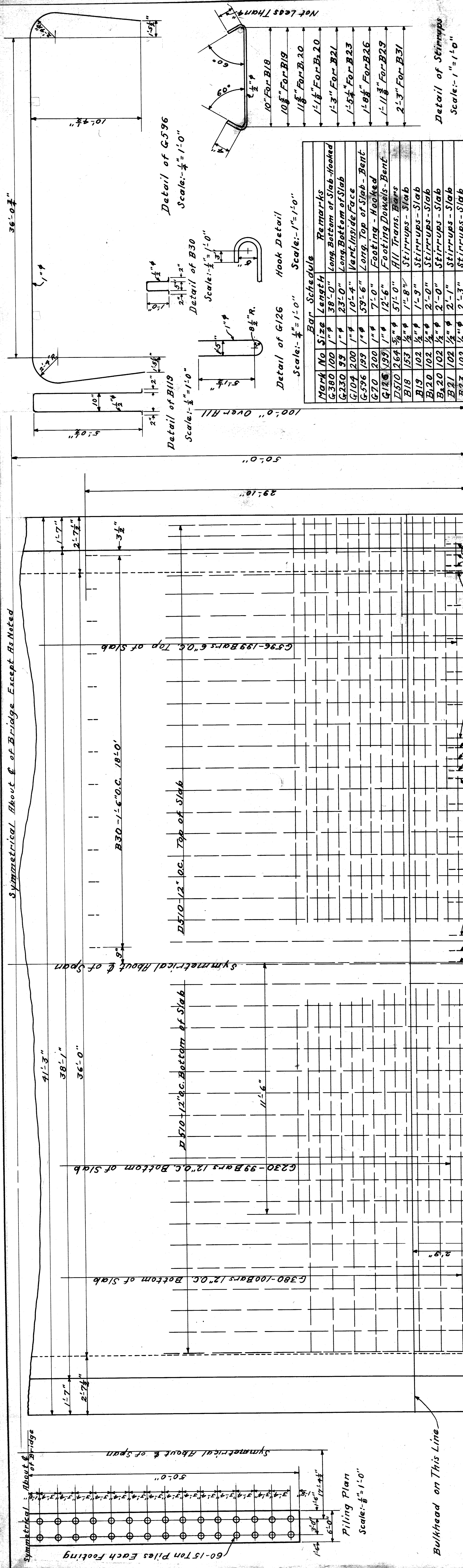
- BILL OF MATERIAL**
- 14 - 3/4" x 1-6" Bolts
 - 24 - 3/4" x 1-9" Bolts
 - 80 - 3/4" Cut Washers
 - 4 - 1/2" x 3-2" Rods Upset to 1/8" Dia. Thread with Nuts
 - 2 - 80# Washers with 2" Hole
 - 44 - of Pipe Rolling with 24-3/4" Exp. Bolt
 - MESH
 - 2 - 44' x 22' 1/2" Wire
 - 6 Ga. 2 1/2" x 44' Copper Bearing Wire Mesh
 - Timber 3' x 12' x 22'-0"
 - 30 - 3' x 12' x 22'-0"
 - 18 - 2' x 12' x 14'-0"
 - 2 - 10' x 10' x 10'-6"
 - 2 - 10' x 10' x 16'-6"
 - Piles
 - 60 - 12' x 4' x 20'-0"

CITY OF DETROIT
DEPT. OF PUBLIC WORKS
OFFICE OF CITY ENGINEER
BUREAU OF STRUCTURES
SCOTT FOUNTAIN BRIDGES
GENERAL PLAN

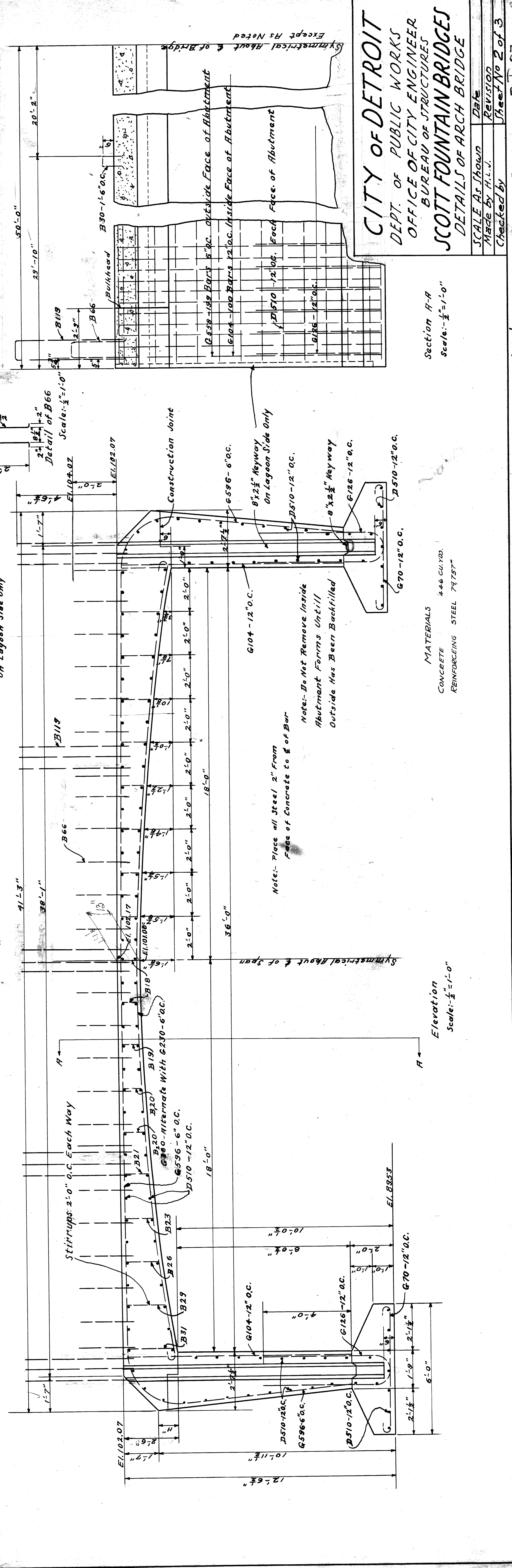
SCALE As Shown. Date SF 1
Made by H.A.A. Revision
Checked by H.L.D. Sheet No 1 of 3

Draw # 4

DW 2281 & 0-2307



Mark No	Size	Length	Remarks
G596	100	1" #	Long Bottom of Slab-Hooked
G596	99	1" #	Long Bottom of Slab
G104	200	1" #	Vert. Inside Face
G596	199	1" #	Long Top of Slab-Bent
G70	200	1" #	Footings-Hooked
G126	199	1" #	Footings-Dowels-Bent
D510	264	3/4" #	All Trans. Bars
B18	102	1/2" #	Stirrups-Slab
B19	102	1/2" #	Stirrups-Slab
B20	102	1/2" #	Stirrups-Slab
B21	102	1/2" #	Stirrups-Slab
B22	102	1/2" #	Stirrups-Slab
B23	102	1/2" #	Stirrups-Slab
B26	102	1/2" #	Stirrups-Slab
B29	102	1/2" #	Stirrups-Slab
B31	102	1/2" #	Stirrups-Slab
B66	48	1/2" #	Dowels-Railing Bent
B30	52	1/2" #	Dowels-Curb Bent
B127	30	1/2" #	Dowels Posts Bent



CITY OF DETROIT
 DEPT. OF PUBLIC WORKS
 BUREAU OF STRUCTURES
SCOTT FOUNTAIN BRIDGES
 DETAILS OF ARCH BRIDGE

Section A-A
 Scale: 1/2" = 1'-0"
 Date
 Revision
 Made by H.L.V.
 Checked by
 Sheet No 2 of 3
 Drawn by B.L. 37

MATERIALS
 CONCRETE 446 CU.YDS.
 REINFORCING STEEL 74757'

Elevation
 Scale: 1/2" = 1'-0"

Bar Schedule		Remarks
Mk. No.	Size	Length
B36	1/2" φ	3'-6"
B389	1/2" φ	38'-9"
B379	1/2" φ	37'-9"
B	1/2" φ	37'-9"

MATERIAL

CONCRETE 17 CU YDS.

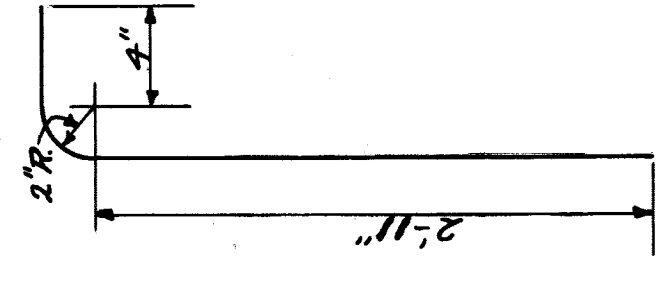
REINFORCING STEEL 799 *

PRE-CAST SPINDLES 56

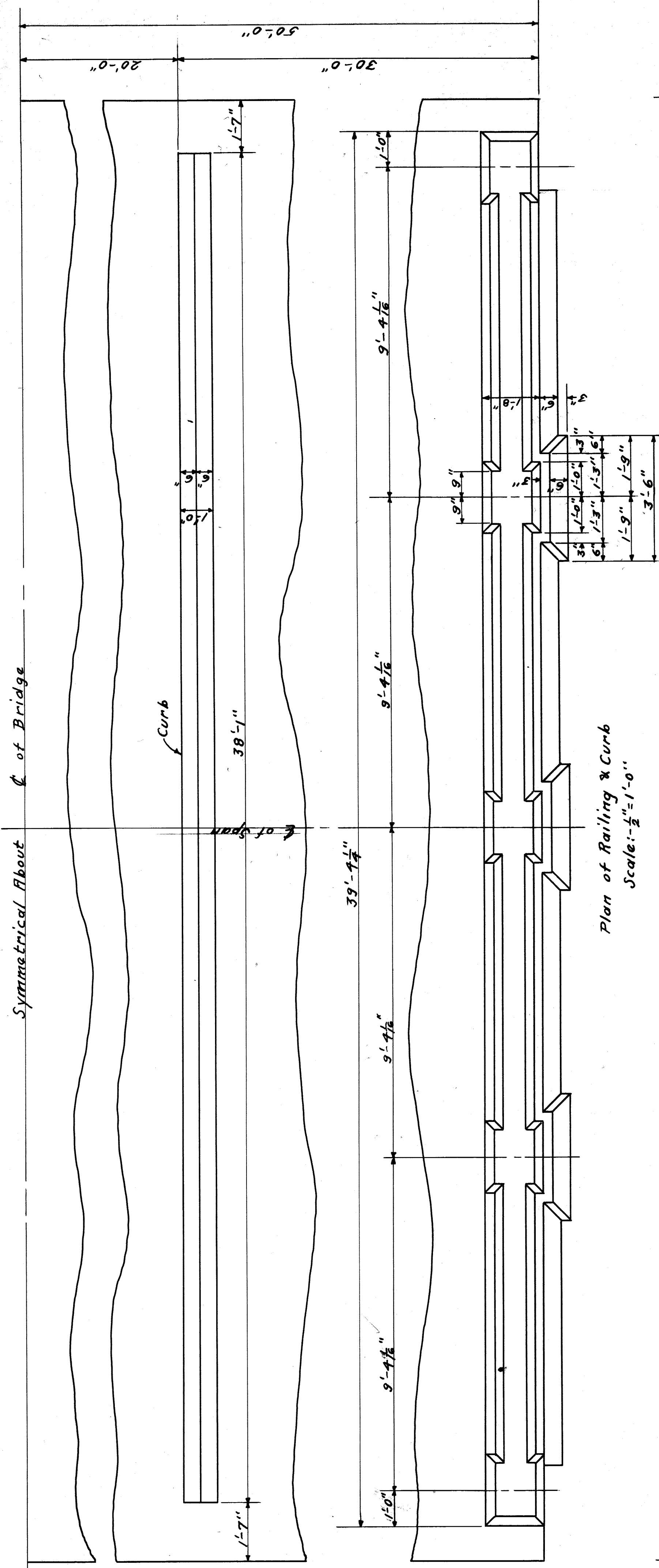
GENERAL NOTES

All elevations refer to City Datum.
 All work to be done in accordance with specifications accompanying these drawings.
 Concrete Mix for railing 1-1/2-2-1/2. All other mix 1-2-1/2-3-1/2.
 No concrete to be placed under water.
 Waterproofing as per specifications.
 Construction joints: All construction joints to have keys of suitable dimensions.
 All construction joints in deck abutments and wing walls to be covered with a double thickness of asphalt saturated fabric 24" wide. Each layer to be placed in a hot asphalt mopping.
 Piling: All piles to be in accordance with specifications. Test piles to be driven after excavation to determine proper length of piling in order to develop a carrying capacity of 15 Tons per pile.
 Entire present structure to be removed.

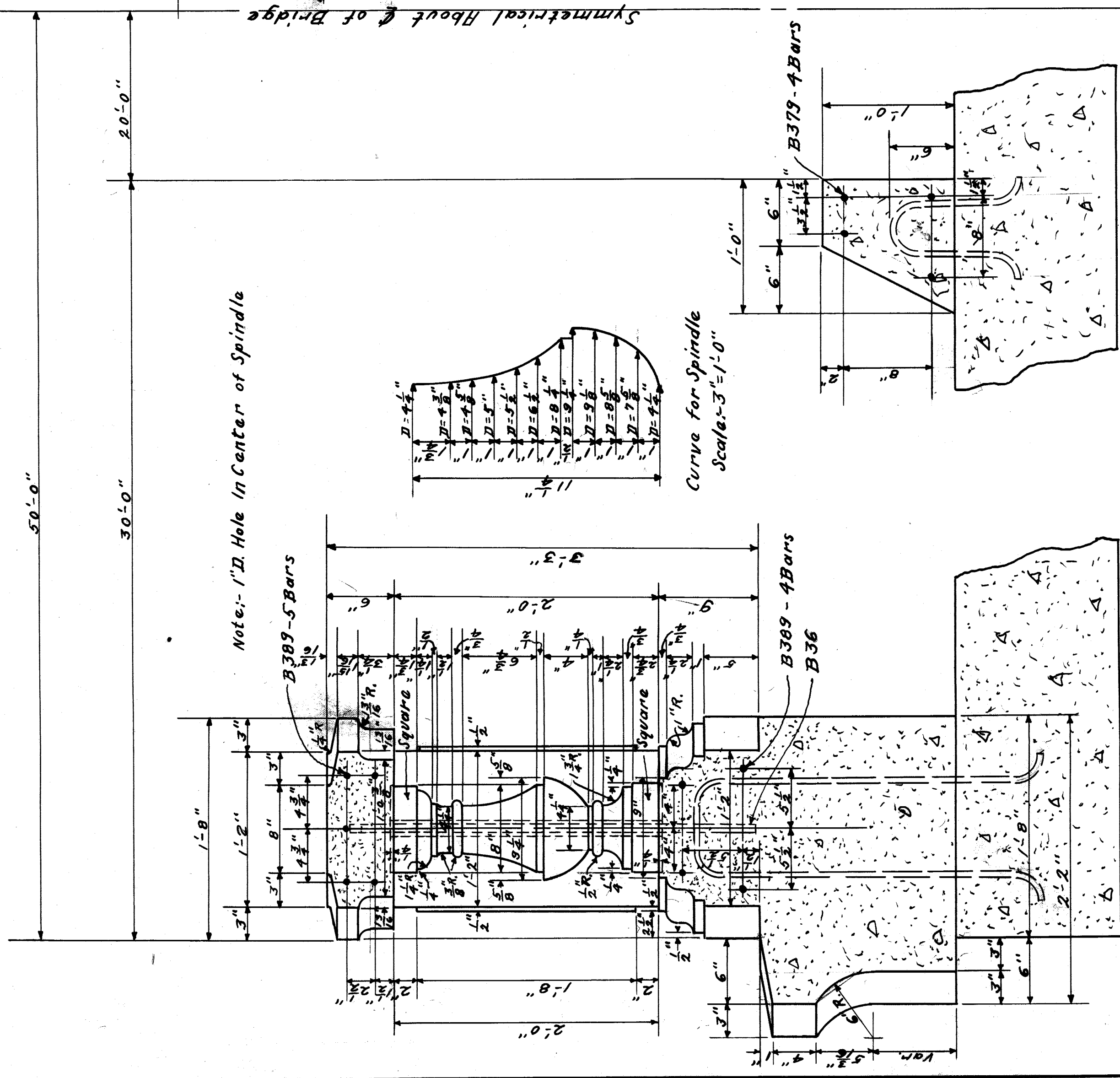
Detail of B36
 Scale: 1/2" = 1'-0"



Symmetrical About C of Bridge

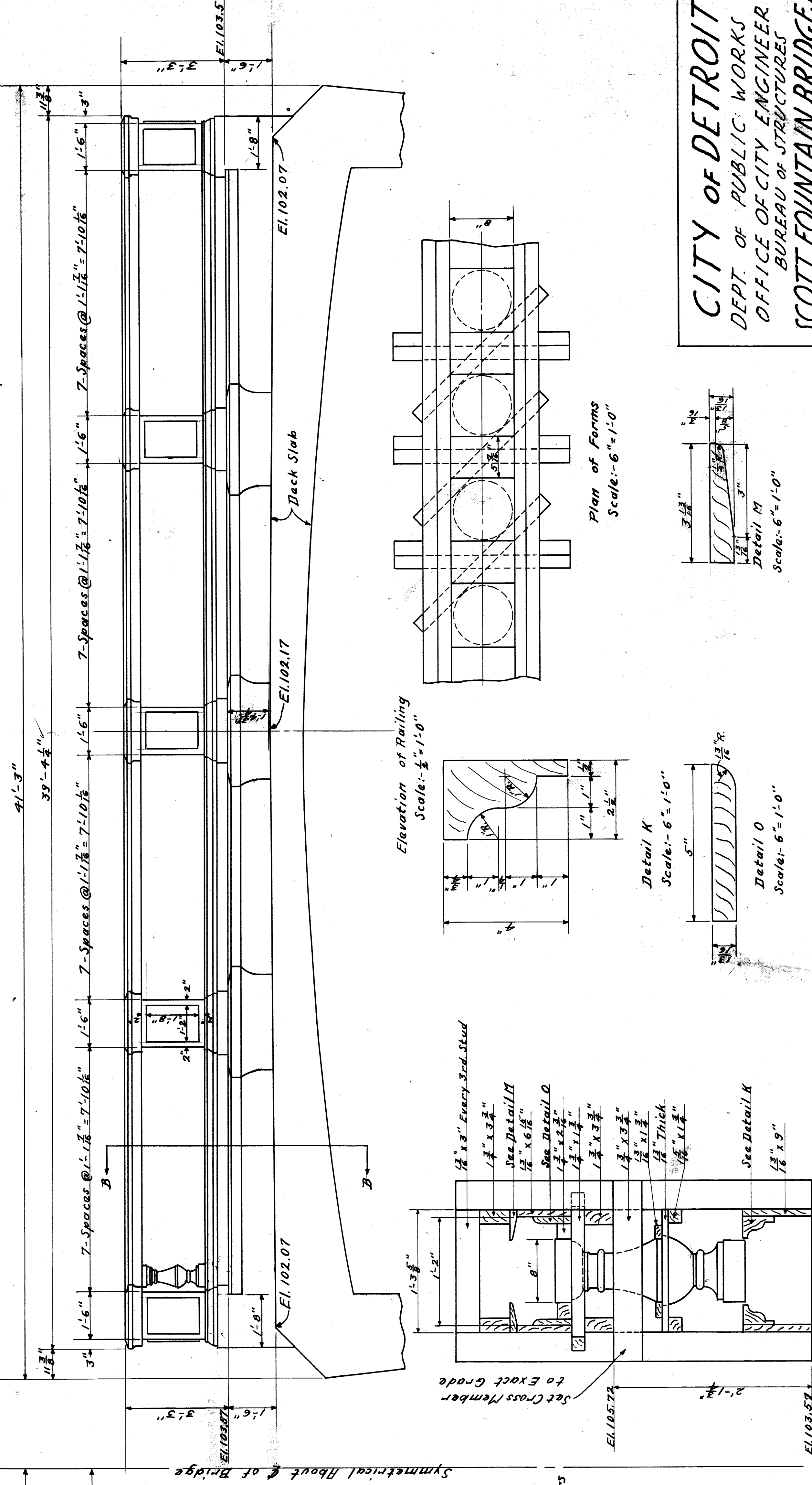


Plan of Railing & Curb
 Scale: 1/2" = 1'-0"



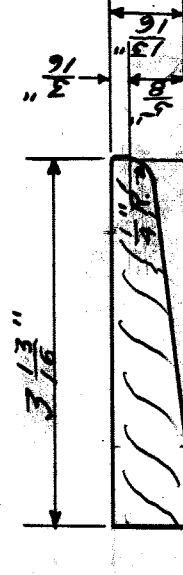
Section B-B

Scale: 1/2" = 1'-0"

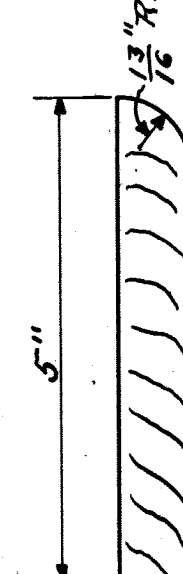


Elevation of Railing
 Scale: 1/2" = 1'-0"

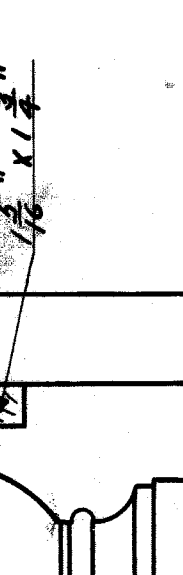
Plan of Forms
 Scale: 6" = 1'-0"



Detail M
 Scale: 6" = 1'-0"



Detail K
 Scale: 6" = 1'-0"



Detail O
 Scale: 6" = 1'-0"

Section of Forms
 Scale: 1/2" = 1'-0"

CITY OF DETROIT
 DEPT. OF PUBLIC WORKS
 OFFICE OF CITY ENGINEER
 BUREAU OF STRUCTURES
 SCOTT FOUNTAIN BRIDGES
 DETAILS-RAILING & CURB

SCALE AS SHOWN
 Made by H.L.V.
 Checked by

Date
 REVISION
 Sheet No. 3 of 3

BWS 237-3 of 200-3

Draw. 4

B.I. 37