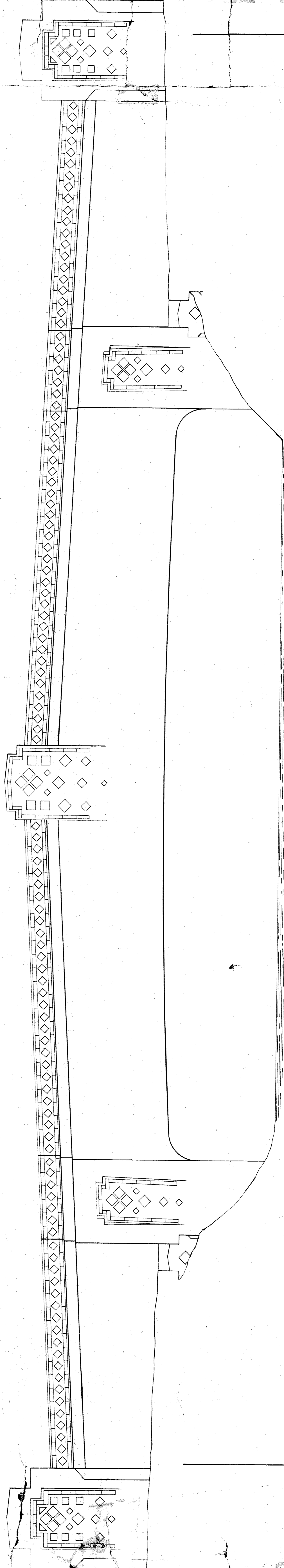


INSIDE OF  
OFFSET PANEL

END VIEW



SIDE VIEW

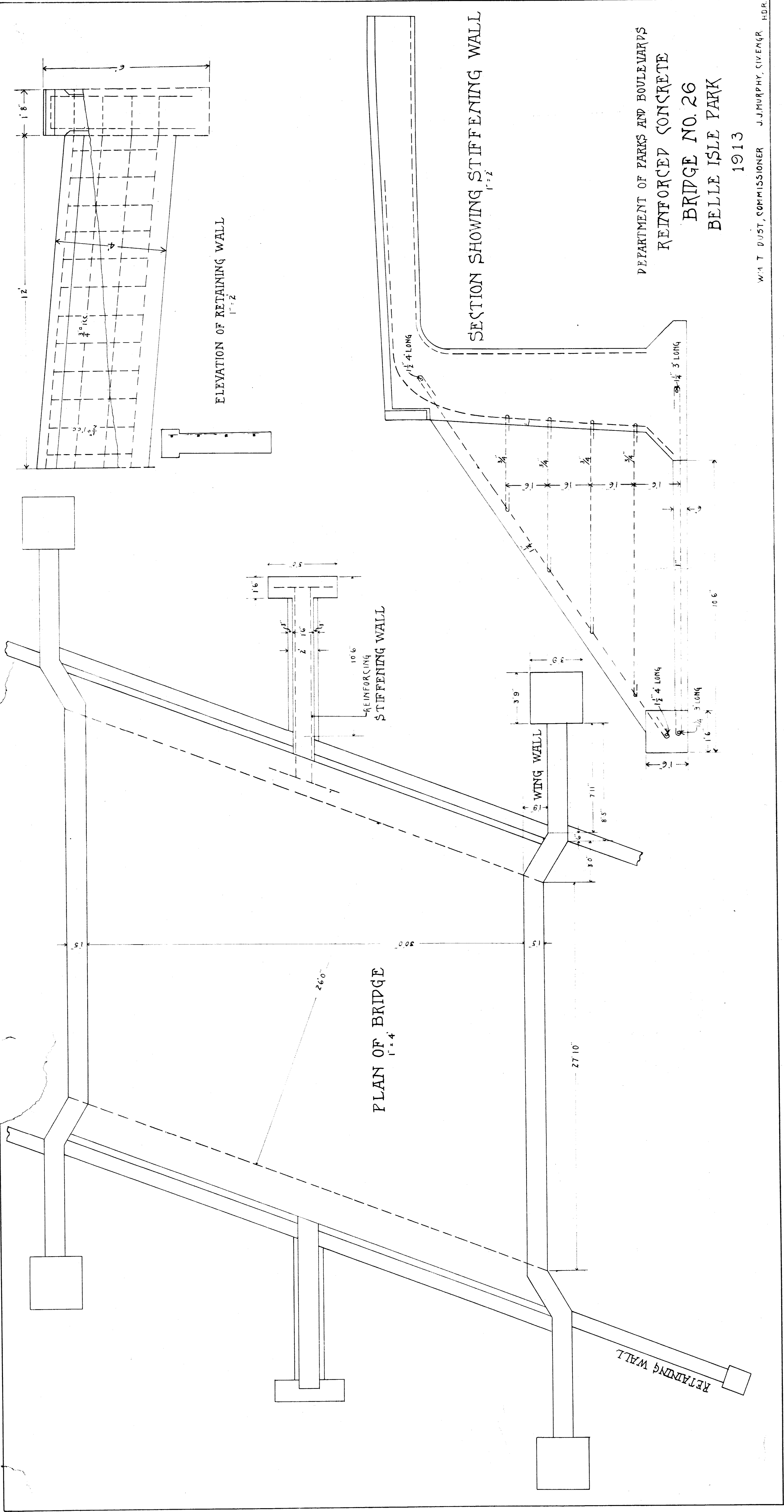
DEPARTMENT OF PARKS AND BOULEVARDS  
REINFORCED CONCRETE

BRIDGE NO. 26.

BELLE ISLE PARK

1913.

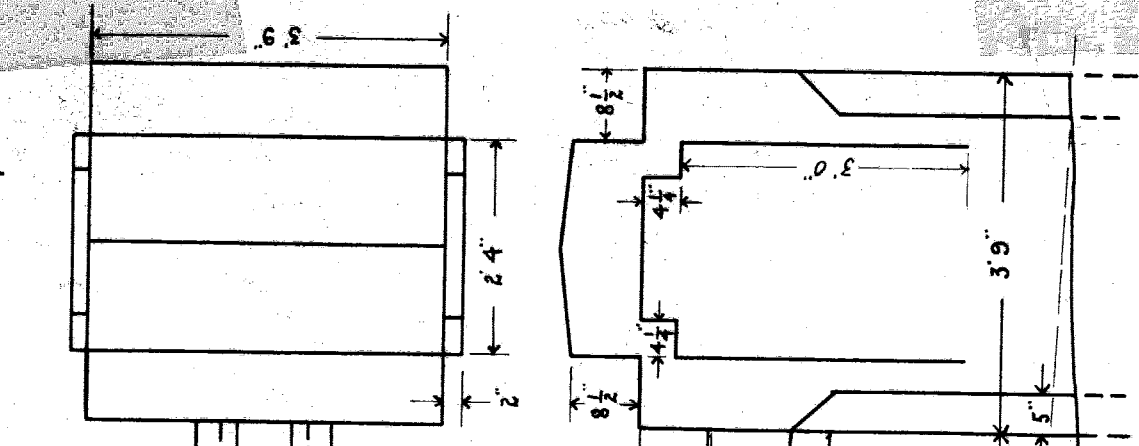
WM. T. DUST, COMMISSIONER J. J. MURPHY, CIVIL ENGR. CHDR.



DEPARTMENT OF PARKS AND BOULEVARDS  
 REINFORCED CONCRETE  
 BRIDGE NO. 26  
 BELLE ISLE PARK  
 1913

W. T. DUST, COMMISSIONER J. J. MURPHY, CIVIL ENGR. H.D.R.



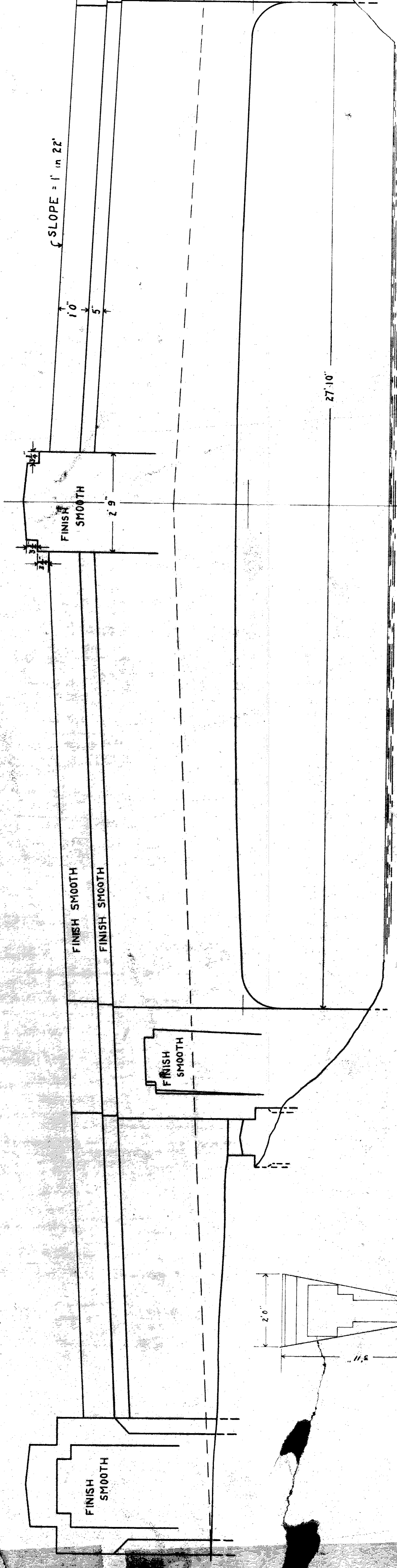


PLAN OF PARAPET  
1/2" = 1'

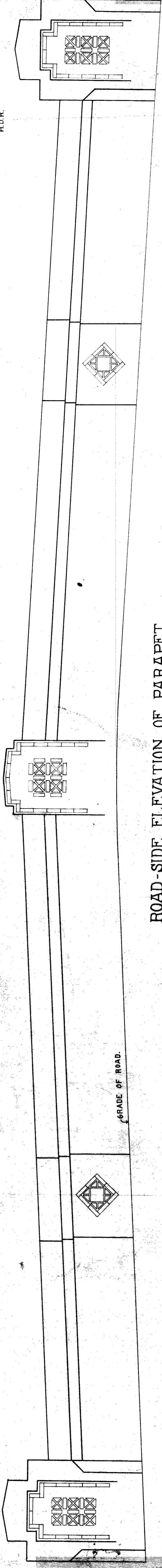
DEPARTMENT OF PARKS AND BOULEVARDS  
 REINFORCED CONCRETE  
 BRIDGE NO. 26.  
 BELLE ISLE PARK

WM. T. PUST, COMMISSIONER  
 J. J. MURPHY CIV. ENGR.  
 1913  
 SCALE 1/2" = 1'  
 H.D.R.

SLOPE = 1" IN 22'

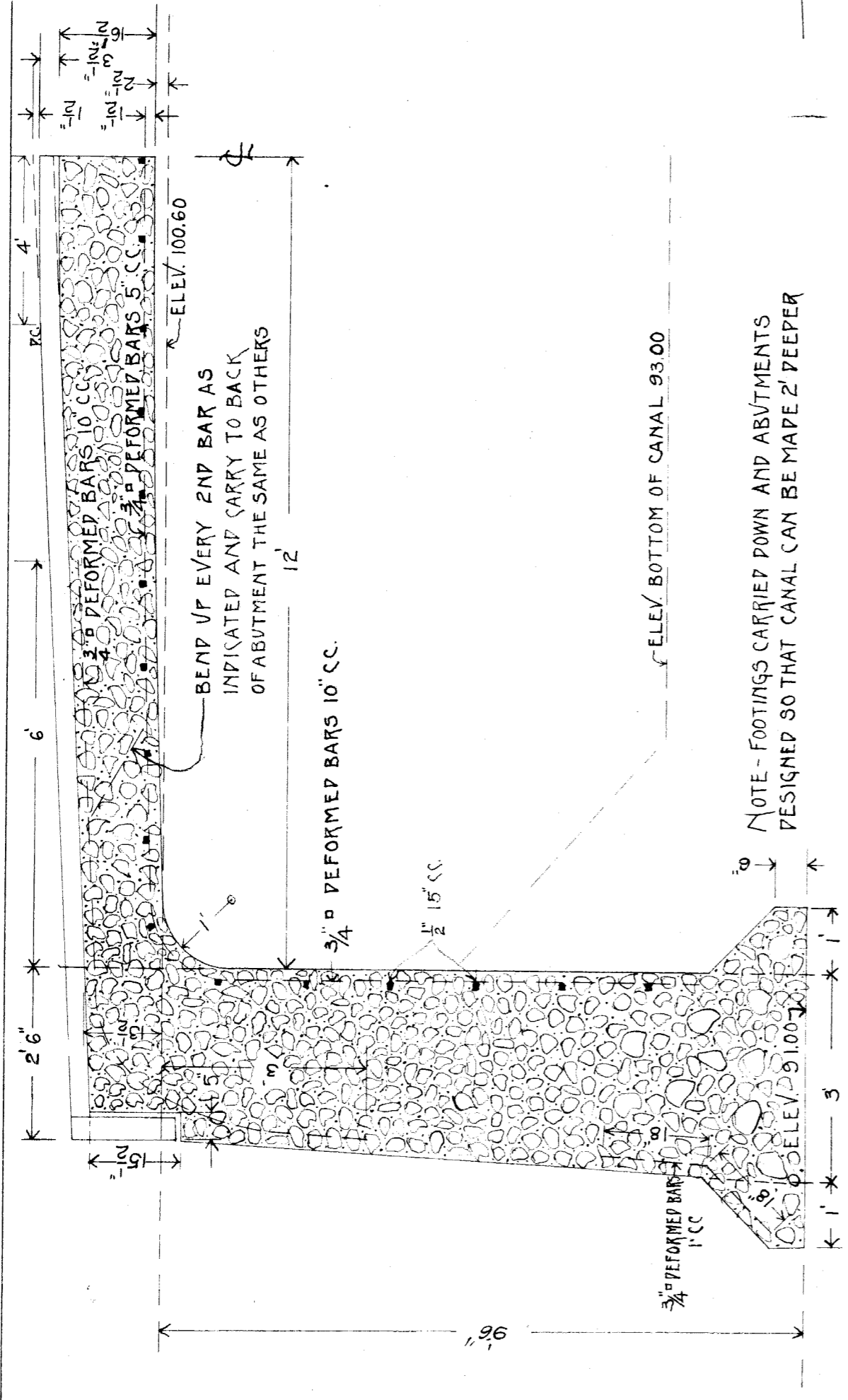


SIDE ELEVATION OF BRIDGE  
1/2" = 1'

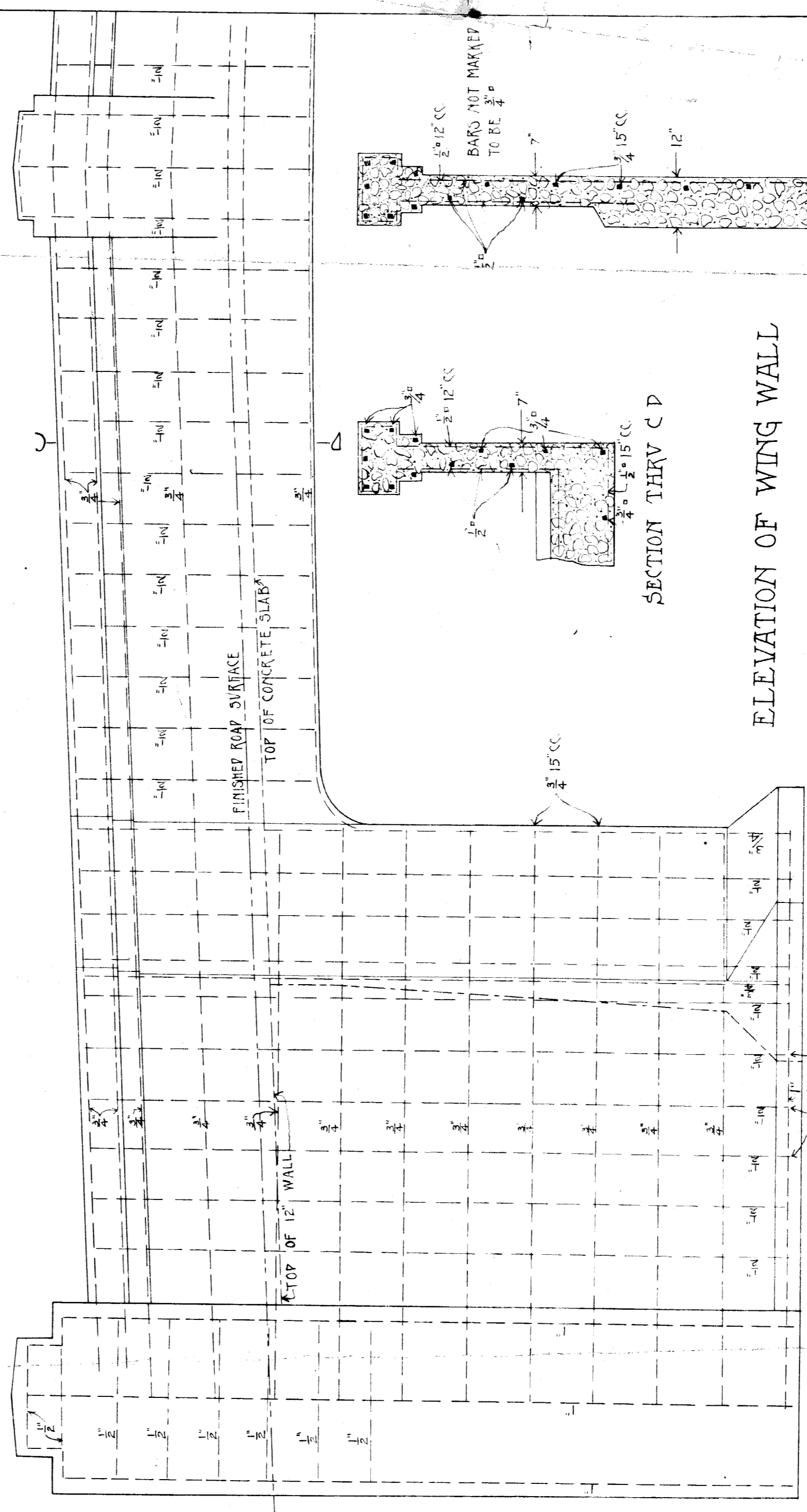
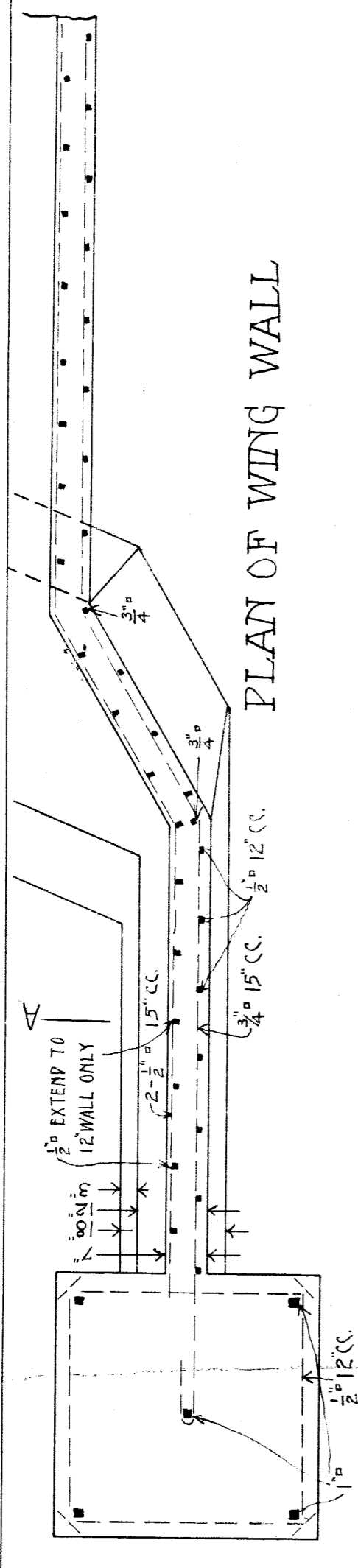


ROAD-SIDE ELEVATION OF PARAPET  
1/2" = 1'

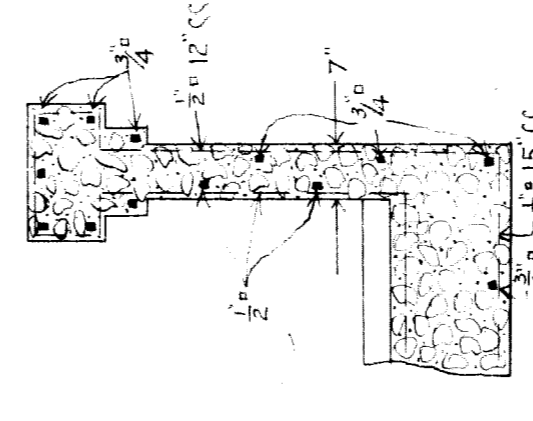
SECTION C-C



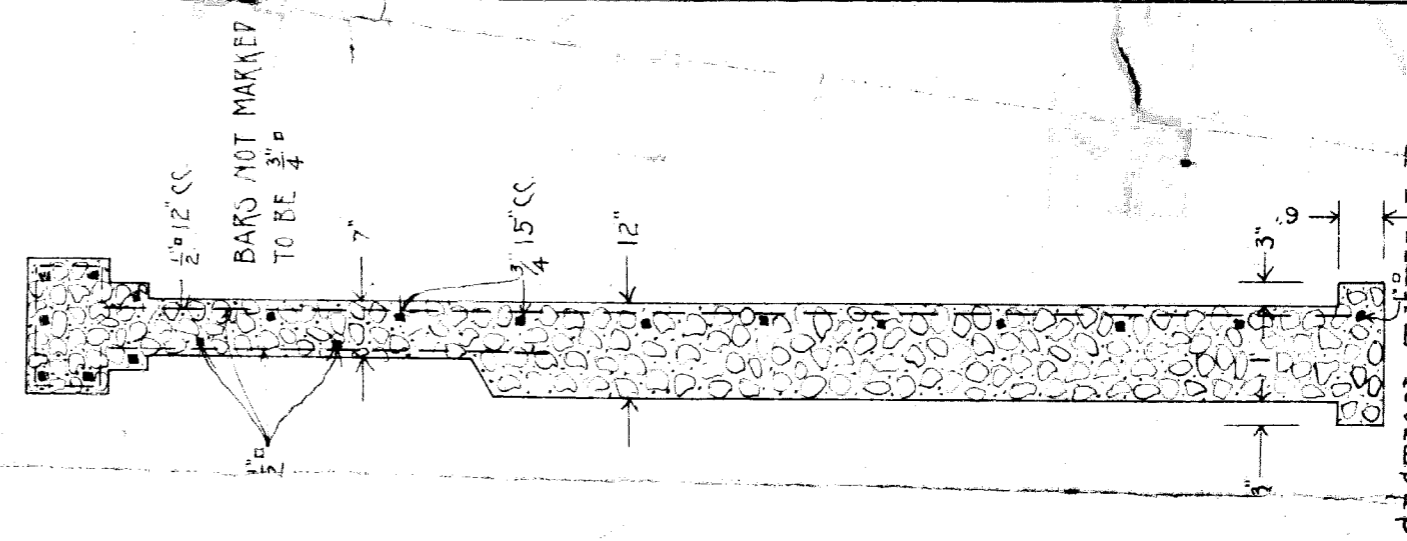
PLAN OF WING WALL



ELEVATION OF WING WALL



SECTION THRU C D



SECTION THRU A B

DEPARTMENT OF PARKS AND BOULEVARDS  
 REINFORCED CONCRETE  
 BRIDGE NO. 26  
 BELLE ISLE PARK  
 1913

WM. T. PUST, COMMISSIONER  
 J. J. MURPHY, CIV. ENGR.

APPROVED BY *Wm T. Pust*