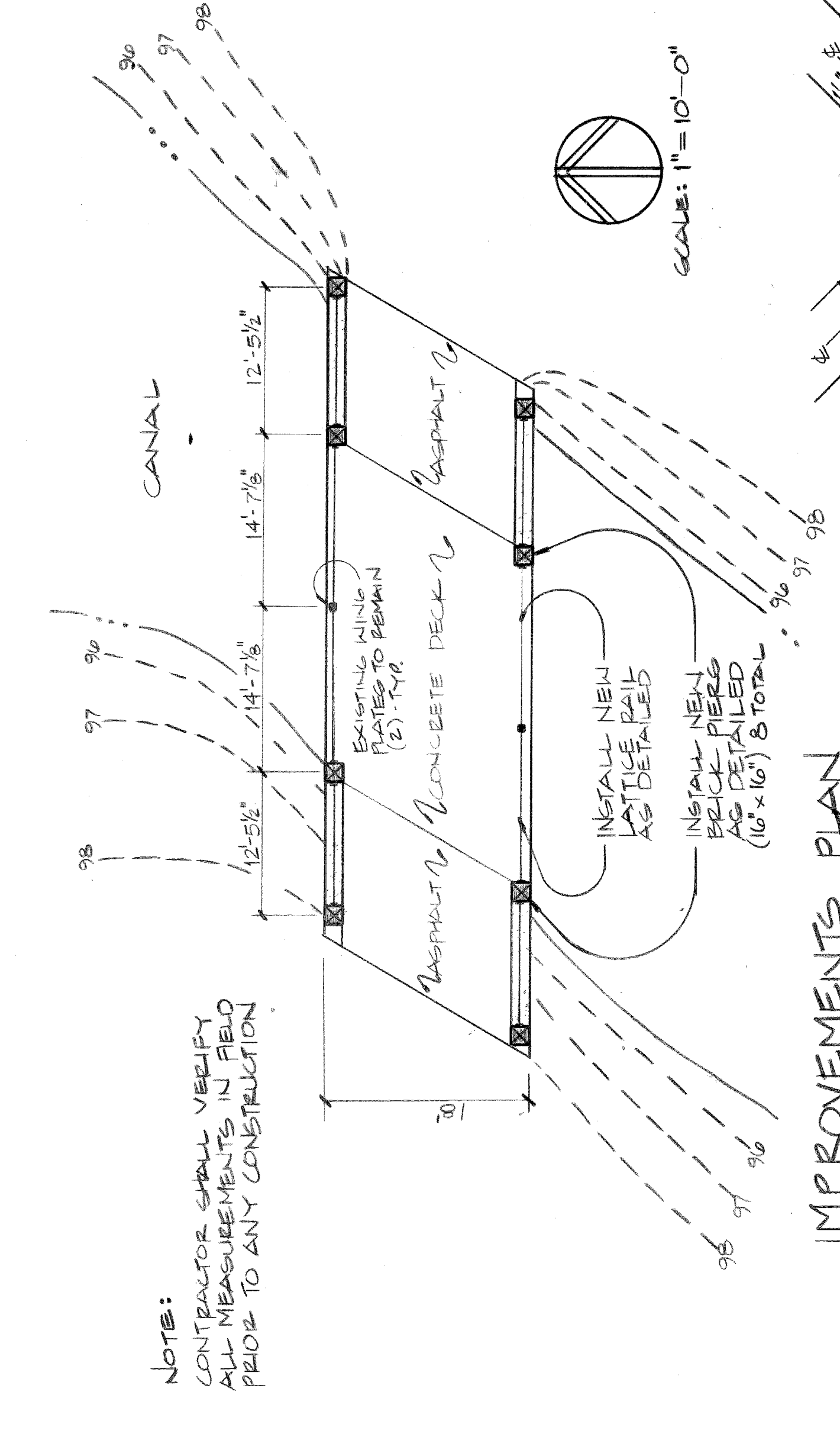
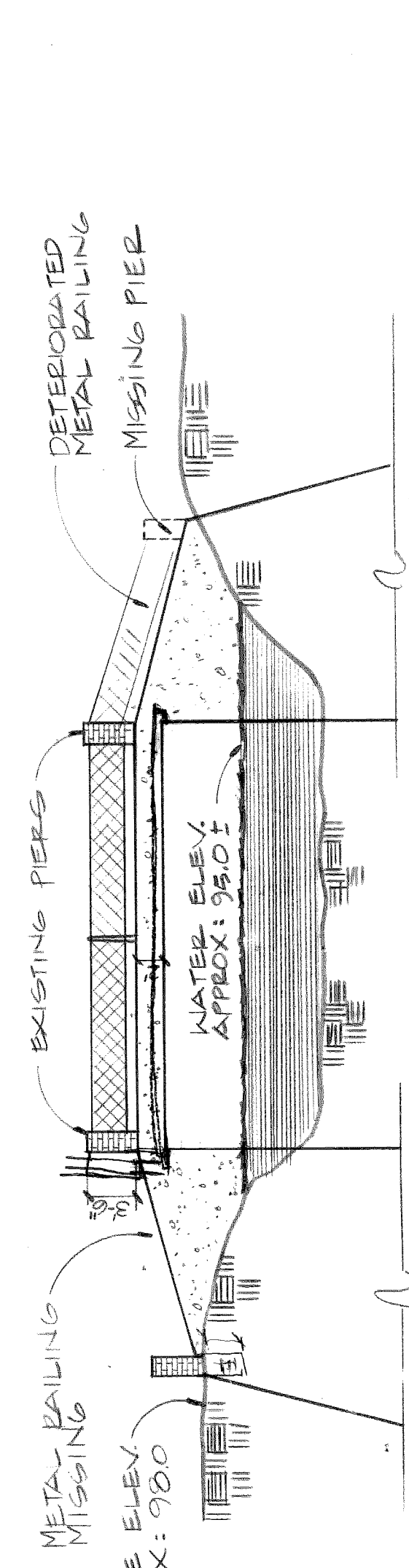
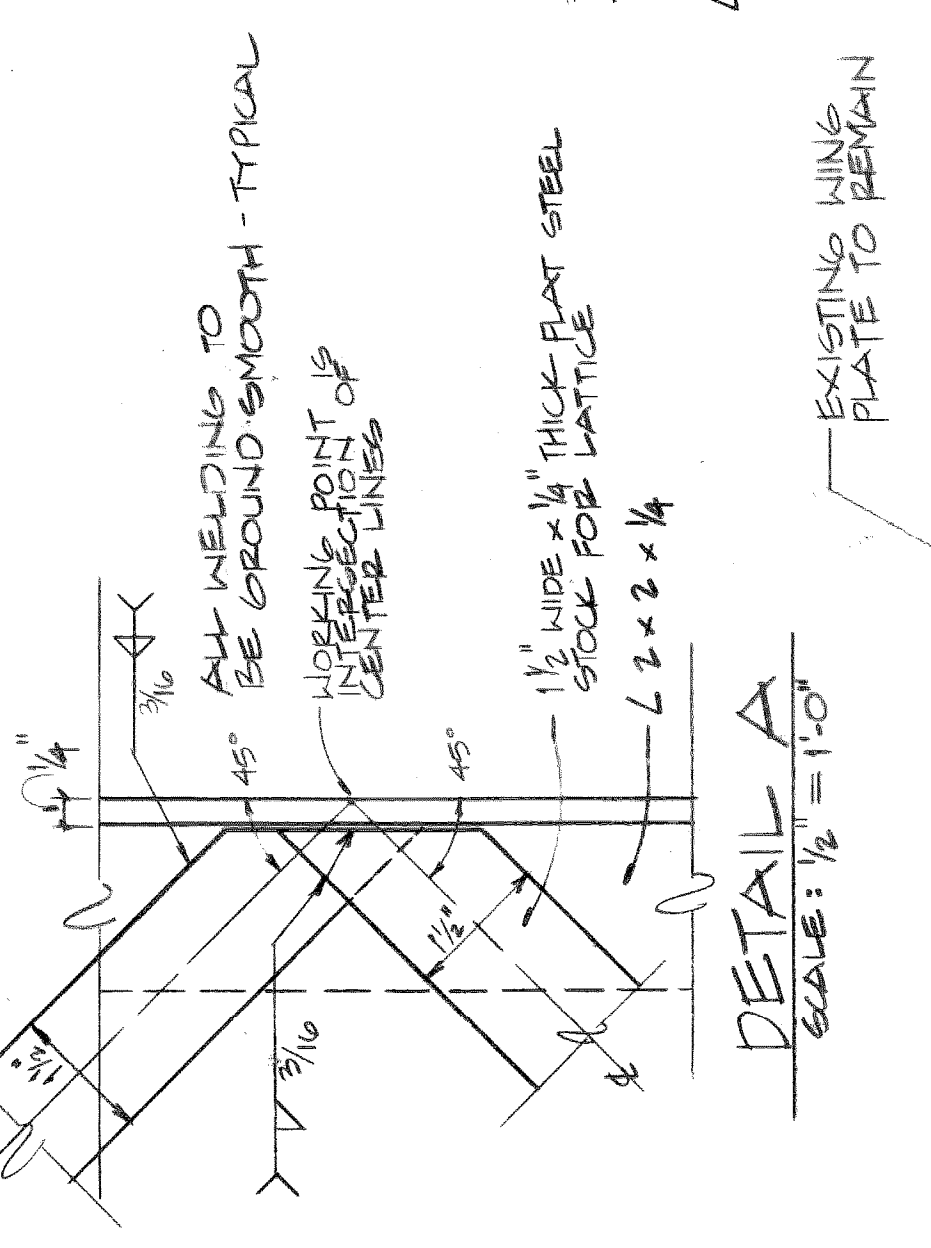
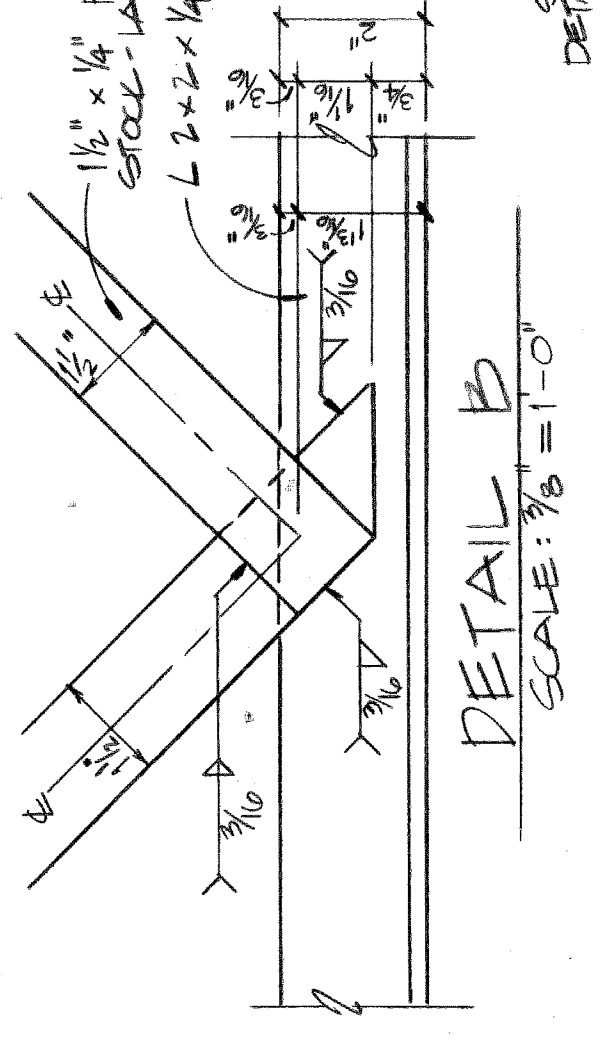
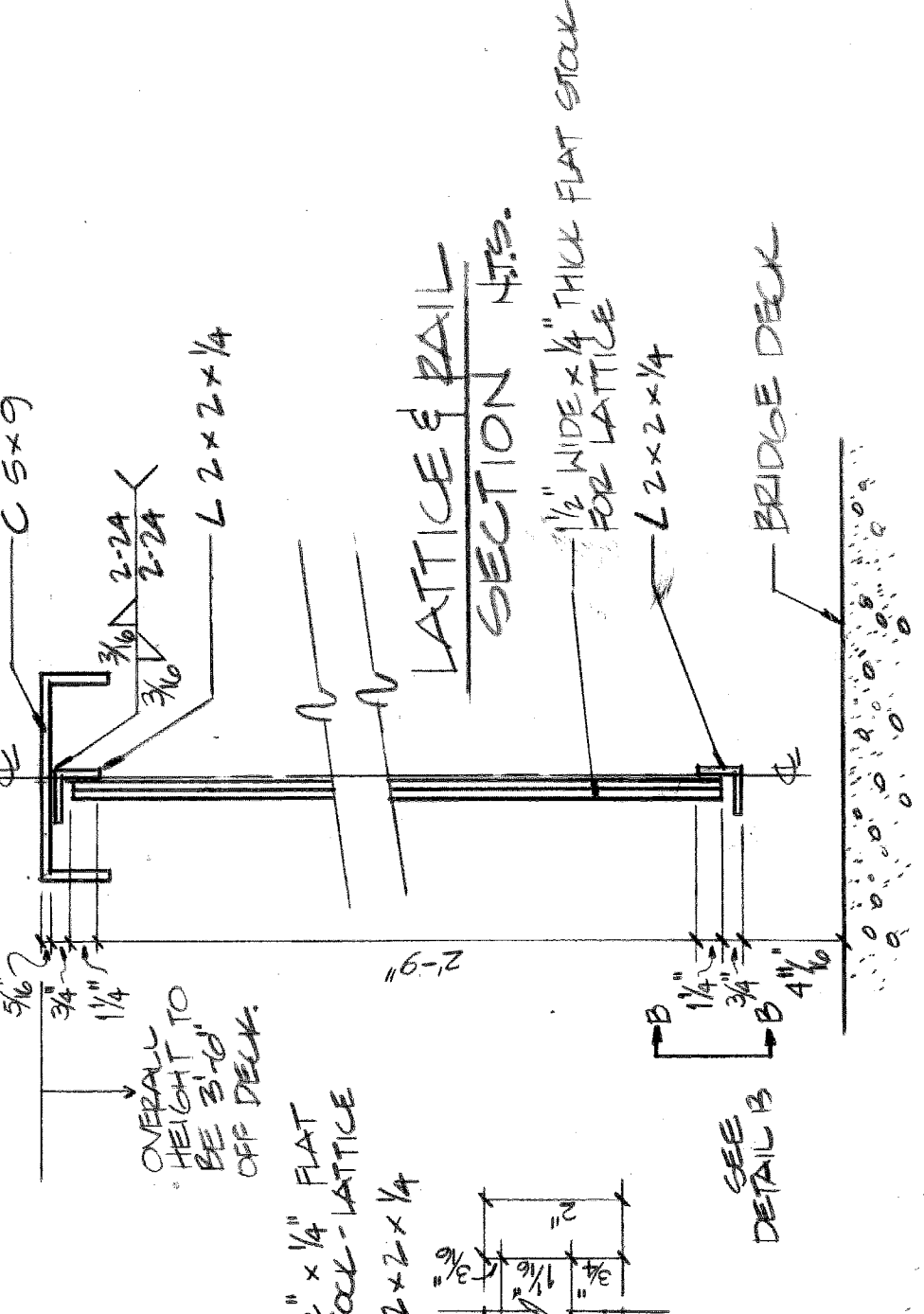


EXISTING CONDITIONS  
SITE PLAN  
SCALE: 1" = 10'-0"

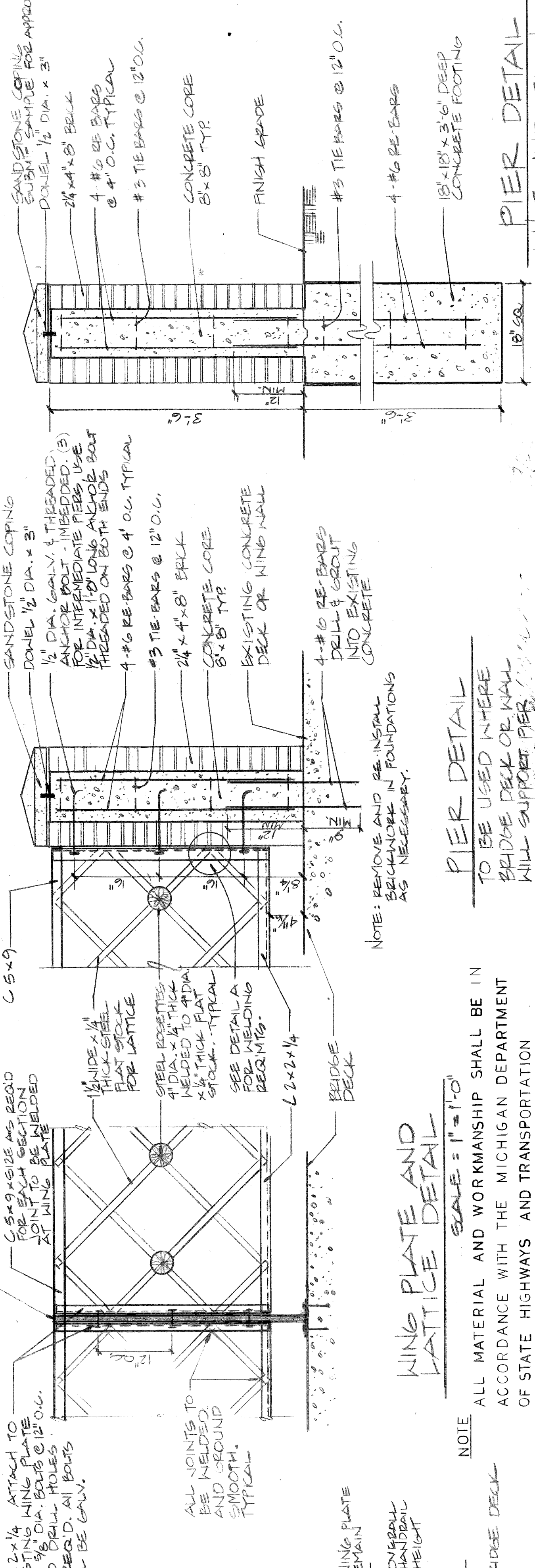


IMPROVEMENTS PLAN  
SCALE: 1" = 10'-0"

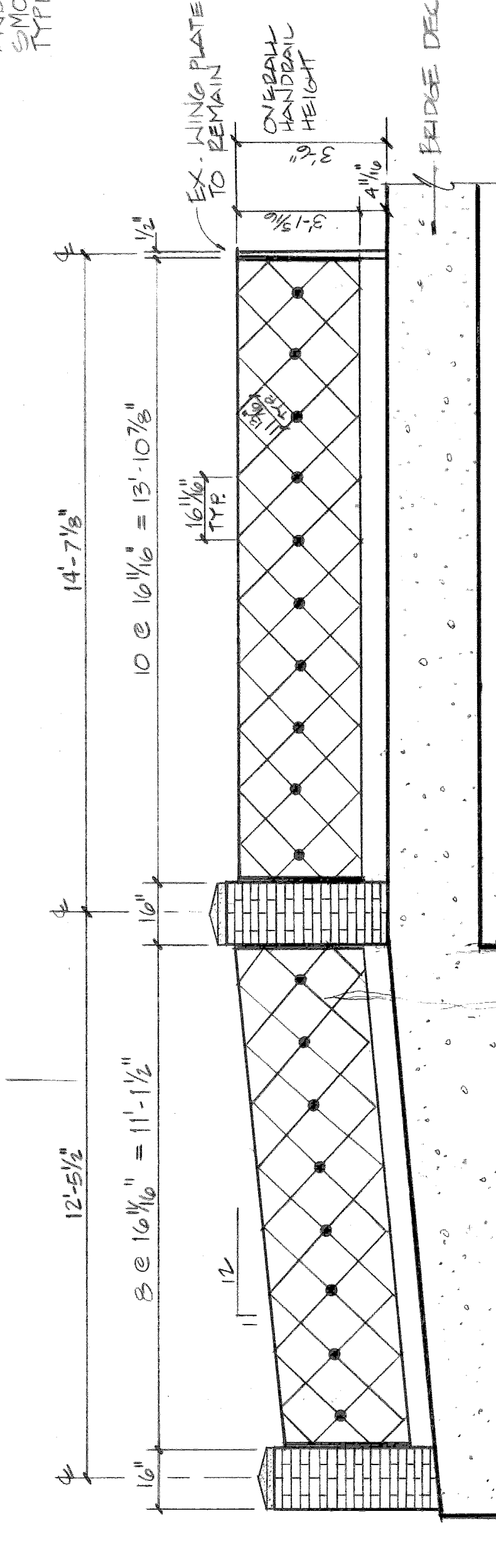
- GENERAL NOTES**
1. DEMOLISH AND REMOVE ALL EXISTING PIERS AND LATTICE RAIL.
  2. CONSTRUCT NEW PIERS AS DETAILED AND AT LOCATIONS SHOWN.
  3. FABRICATE AND INSTALL NEW LATTICE RAIL AS DETAILED.
  4. ALL METAL JOINTS TO BE WELDED AND GROUND SMOOTH.
  5. COMMERCIAL BLAST CLEAN THE EXISTING 2 WING PLATES. PRIME PAINT THE PLATES AND NEW LATTICE RAILING SECTIONS WITH TNE MEC SERIES 65 FOSXPRIME; INTERMEDIATE COAT WITH TNE MEC SERIES 66 HI-BUILD EPOXYLINE E H 1/2 (GRAPHITE) FINISH COAT WITH TNE MEC SERIES 73 ENDURA-SHIELD III - SERIES 66 AND 73 COATINGS SHALL HAVE THE ALL STRUCTURAL STEEL SHALL CONFORM TO ASTM A 36.
  6. ALL BRICKS SHALL BE SOLID LOAD BEARING UNITS SHALL CONFORM TO ASTM C 216, GRADEISM, TYPE I, FE-8.
  7. ALL MORTAR SHALL CONFORM TO ASTM C 270 TYPE M, CEMENT TYPE I, UNIFORM TO ASTM C 150.
  8. ALL PORTLAND CEMENT SHALL CONFORM TO ASTM C 94 WITH 3,500 PSI @ 28 DAYS.
  9. ALL REINFORCING SHALL CONFORM TO ASTM A 307 A395.
  10. ALL CONSTRUCTION SHALL CONFORM TO CITY OF DETROIT STD. SPEC. FOR PAVING AND RELATED CONSTRUCTION.



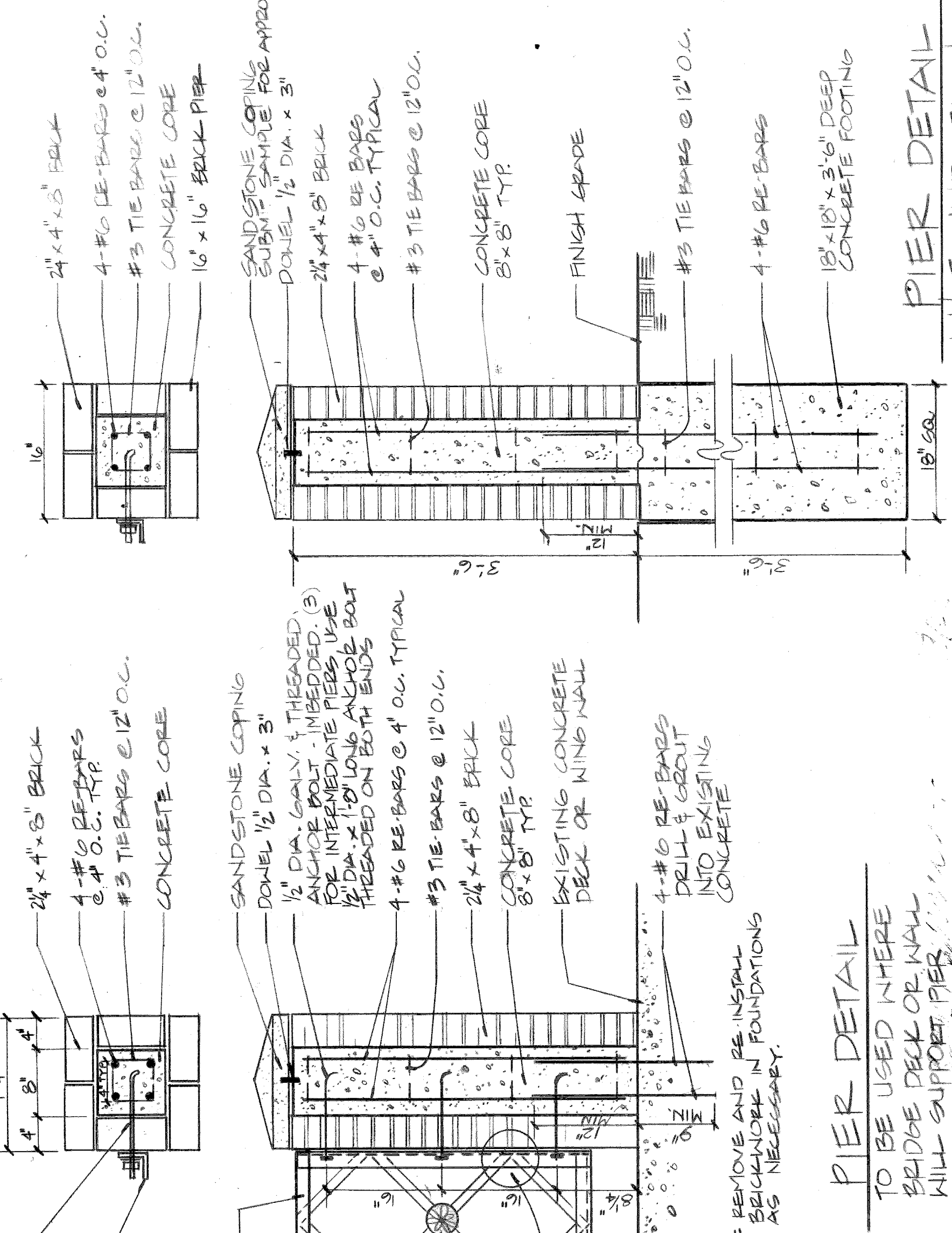
EXISTING SOUTH ELEVATION  
SCALE: 1" = 10'-0"



WING PLATE AND LATTICE DETAIL  
SCALE: 1" = 10'-0"



HALF ELEVATION  
SCALE: 1" = 10'-0"



PIER FOUNDATION  
SCALE: 1" = 10'-0"

NOTE: REMOVE AND REINSTALL REINFORCING IN FOUNDATIONS AS NECESSARY.

PIER DETAIL TO BE USED WHERE BRIDGE DECK OR WING WILL SUPPORT PIER.

NOTE: ALL MATERIAL AND WORKMANSHIP SHALL BE IN ACCORDANCE WITH THE MICHIGAN DEPARTMENT OF STATE HIGHWAYS AND TRANSPORTATION STANDARD SPECIFICATION FOR HIGHWAY CONSTRUCTION, 1990 EDITION.

CITY ENGINEERS BENJAMIN FINAL REVIEW & REVISIONS		DESIGNED BY CITY ENGINEERS STRUCTURAL	APPROVED M.C.M.	CITY OF DETROIT ENGINEERING DEPARTMENT		BELLE ISLE GOLF COURSE SERVICE BRIDGE (BW - 223)		SHEET 1 OF 4 SHEETS
DATE	BY	DATE	BY	DRAWING NO. A-1		CONTRACT NO.		ASSIGNMENT NO. 91-56-07
COORD.	DESCRIPTION	DATE	BY	TRACED BY		DATE		DATE MAY 1991
REVISIONS LOCATED BY COORDINATES ON SHEET		CHECKED BY		DRAWING NO. A-1		CONTRACT NO.		ASSIGNMENT NO. 91-56-07