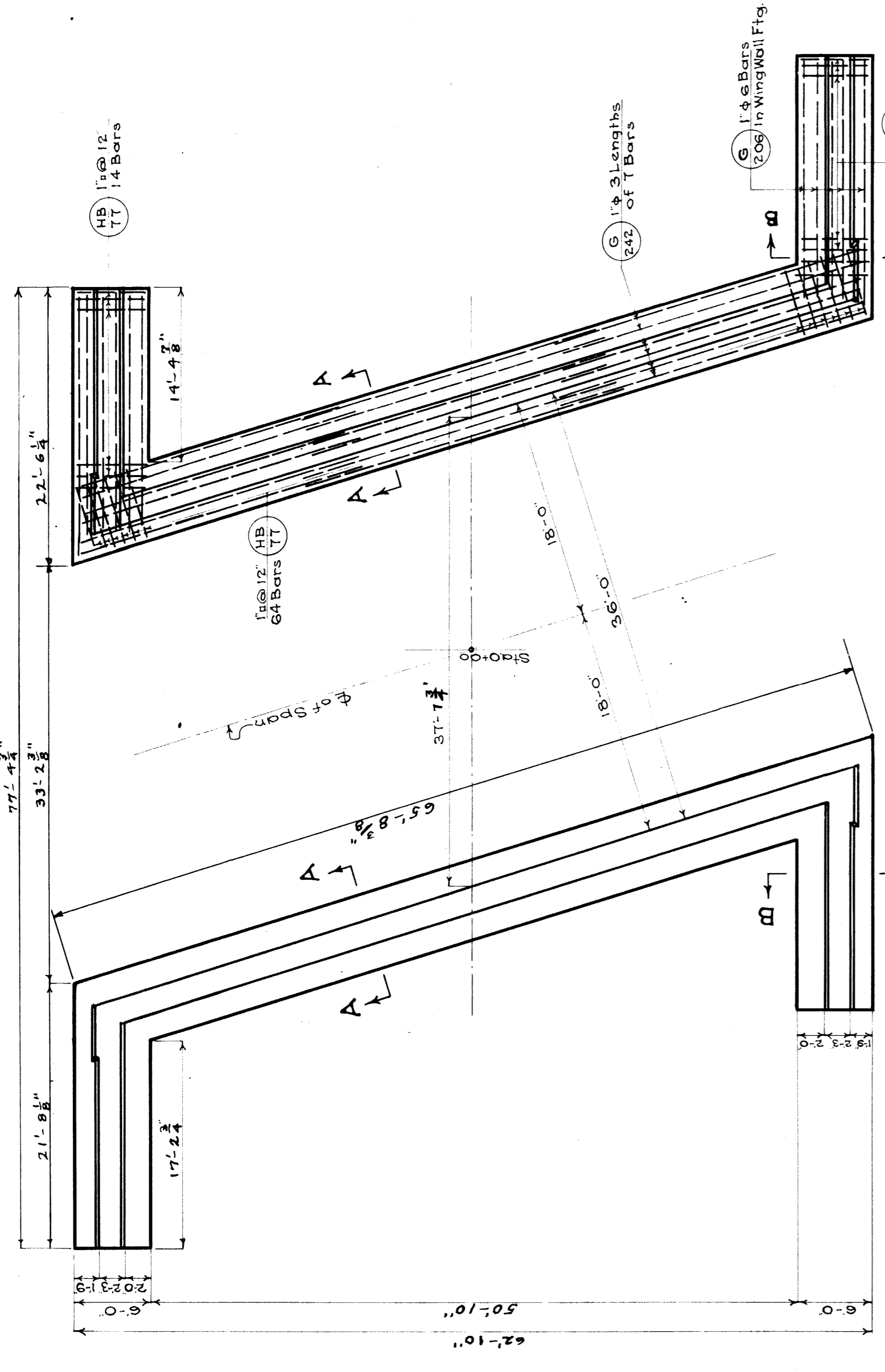
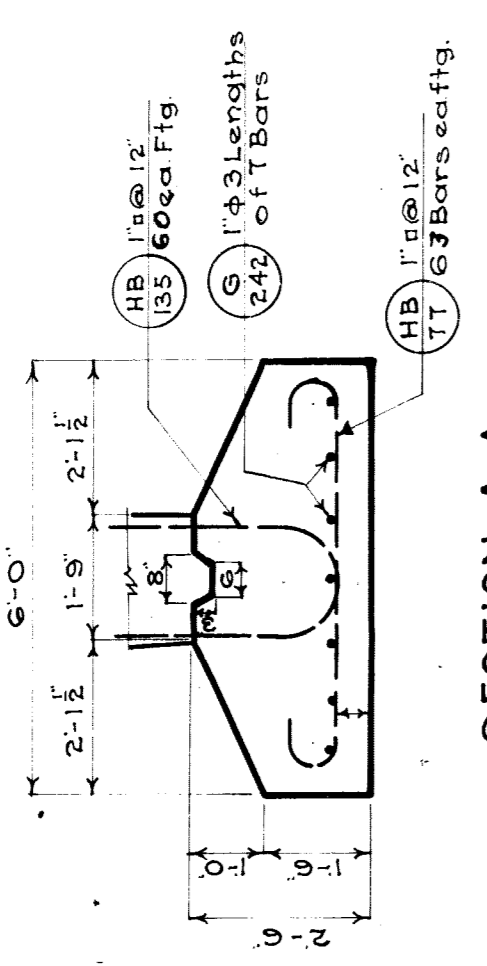


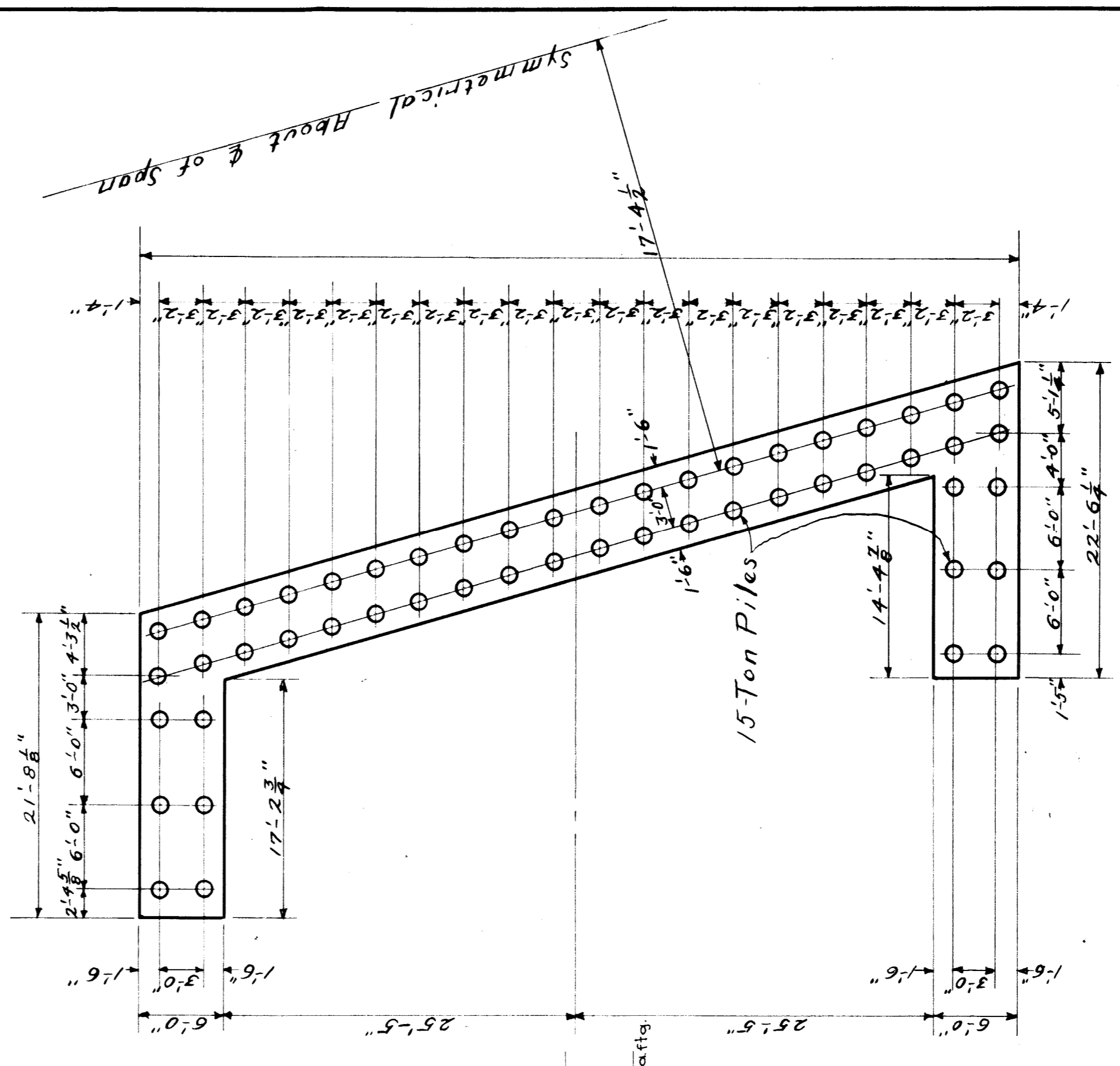
Mark No.	Size	Length	Remarks
HB135 120	1 1/2"	13'-5"	Vertical-Abutment Footings
G242 42	1 1/2"	24'-2"	Horizontal
HBTT 198	1 1/2"	1'-0"	Abutment and Wall Figs.
EB60 48	3/4"	6'-0"	Wall Footings, only
FB124 66	3/4"	12'-4"	Vertical - Wall
G206 24	1 1/2"	20'-6"	Horiz Wall Footings
B104 44	2 1/2"	10'-4"	Vertical - Wall
B190 48	1 1/2"	19'-0"	Horizontal

**GENERAL NOTES**

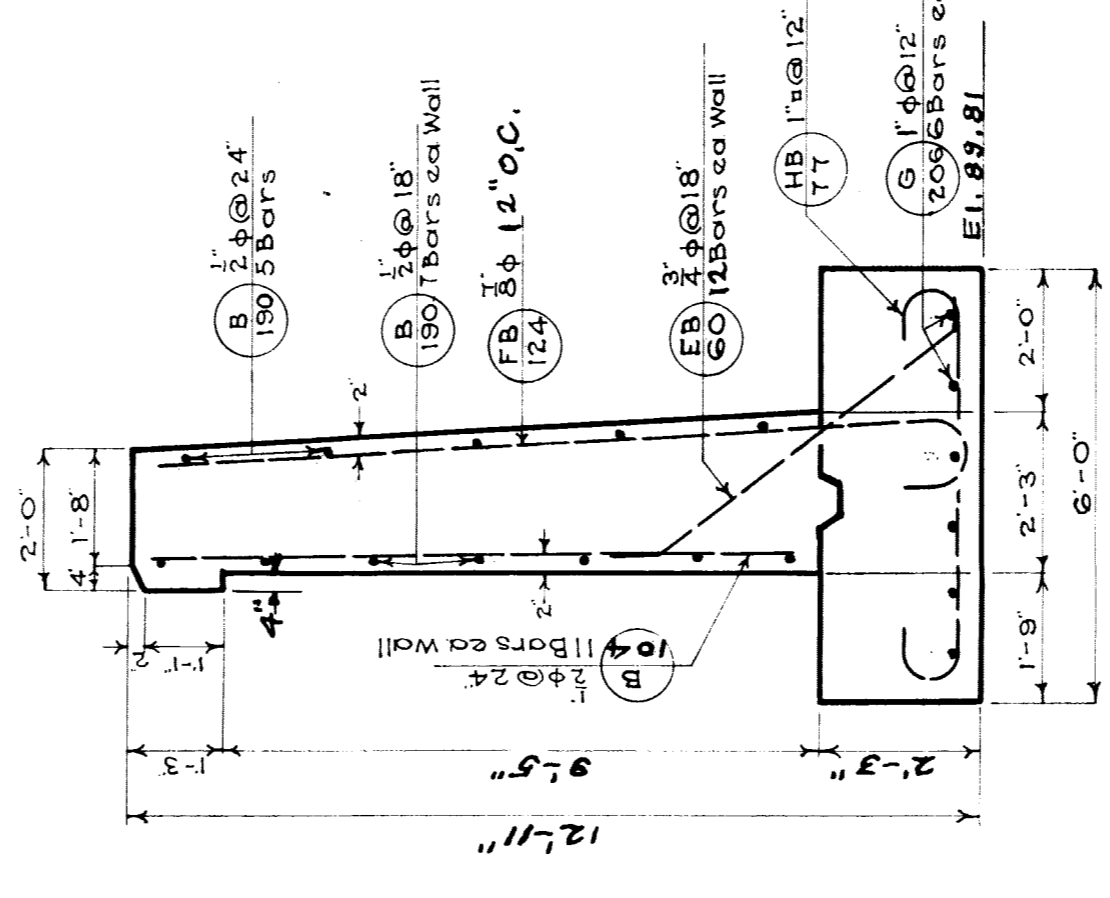
All Elevations Refer to City Datum  
 All Work to be Done in Accordance With The Specifications  
 Accompanying These Drawings  
 Concrete:- Mix For Railings - 1-1 1/2-2 1/2  
 All Other Mix - 1-2 1/2-3 1/2  
 No Concrete to be Placed Under Water  
 Waterproofing:- As per Specifications  
 Construction Joints:- All construction Joints to have Keys of Suitable Dimensions, Joints in Deck, Abutments, and Wing Walls to be Covered With a Double Thickness of Asphalt Saturated Fabric 24" Wide. Each Layer to be Placed in a Hot Asphalt Mopping  
 Piling:- All Piles to be in Accordance With The Specifications  
 Test Piles to be Driven After Excavation to Determine Proper Length of Piling to Develop a Carrying Capacity of 15-Tons Per Pile  
 Entire Present Structure to be Removed



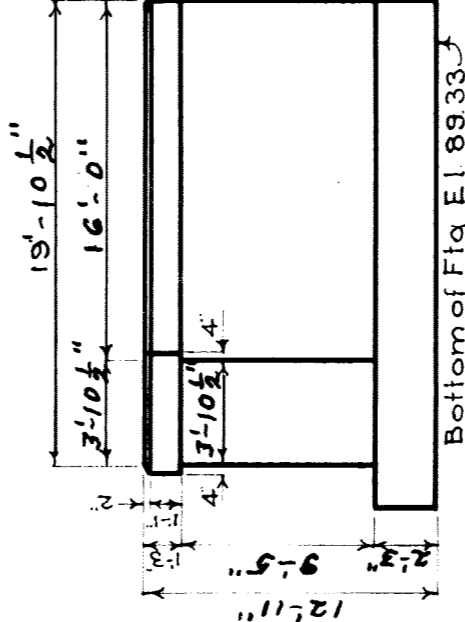
PLAN  
Scale 3/8"=1'-0"



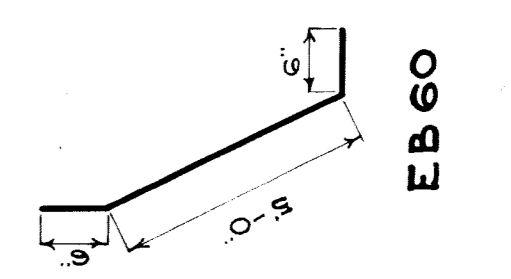
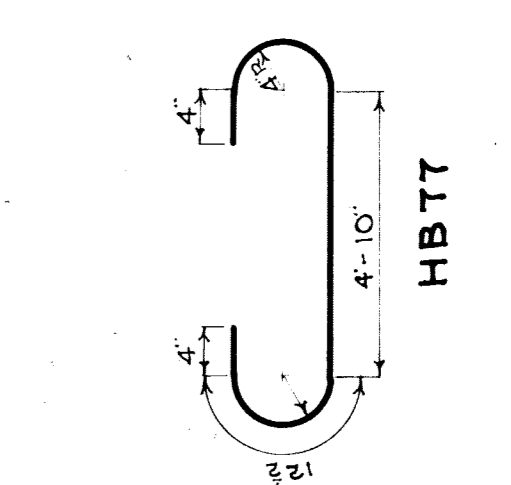
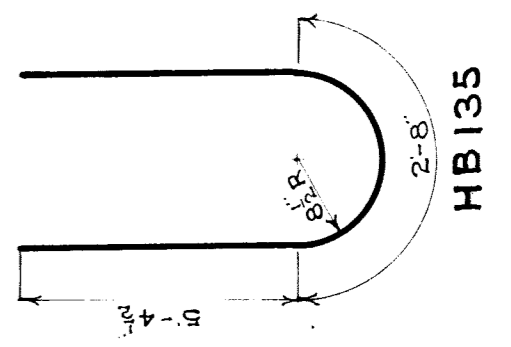
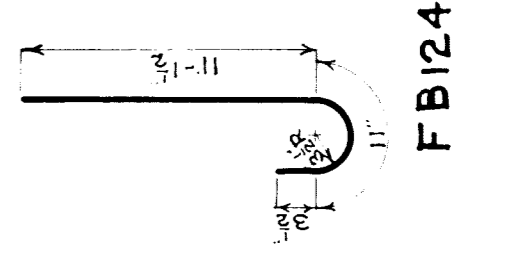
Piling Plan  
Scale 1/8"=1'-0"



SECTION B-B  
Scale 3/8"=1'-0"



SIDE ELEVATION  
Scale 3/8"=1'-0"

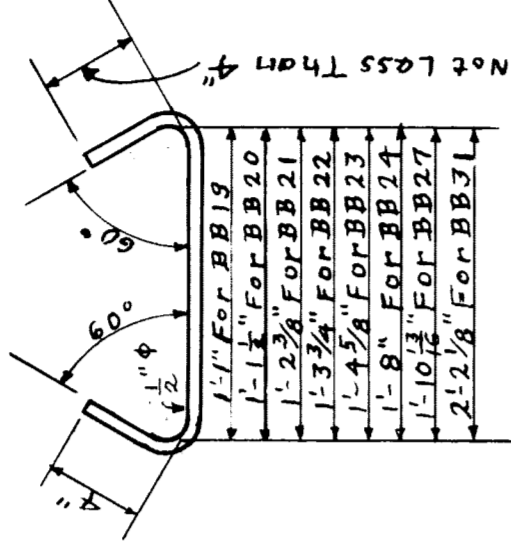


CITY OF DETROIT  
 DEPARTMENT OF PUBLIC WORKS  
 OFFICE OF CITY ENGINEER  
 BUREAU OF STRUCTURES  
**BELLE ISLE BRIDGE No 18**  
 ABUTMENT AND FOOTINGS  
 WINGWALL DETAILS

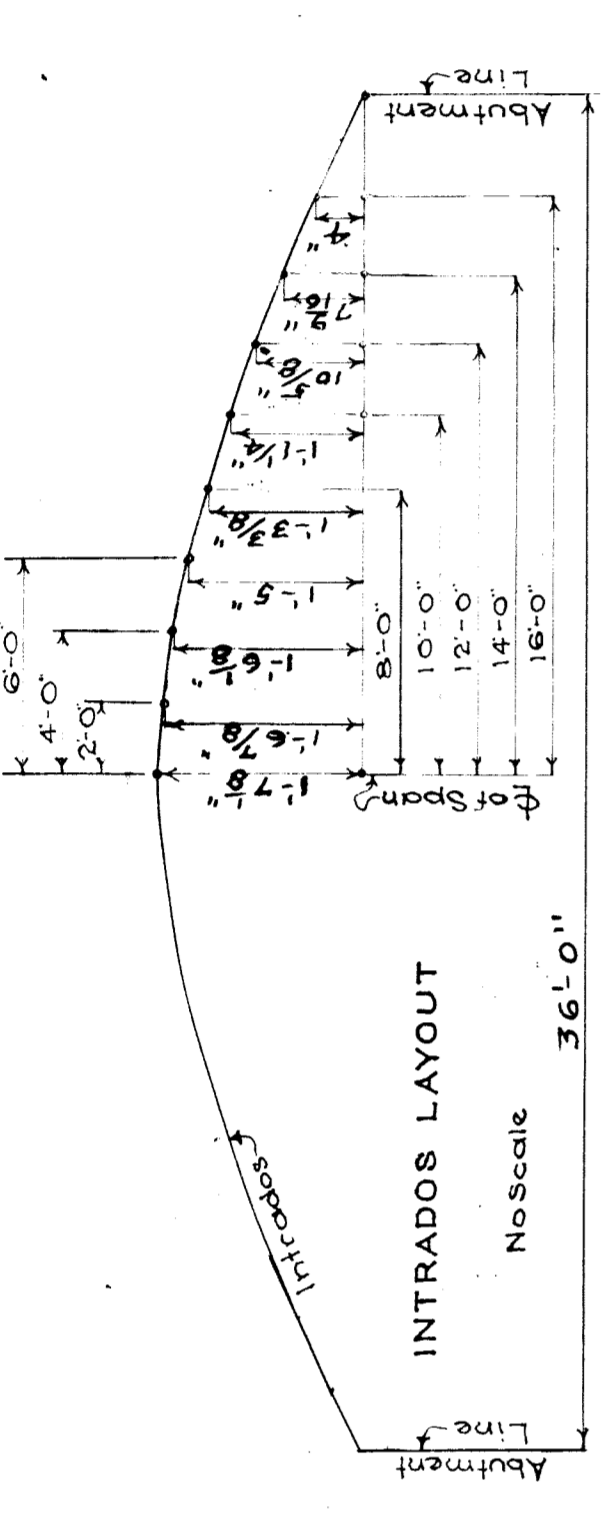
Scale - As shown	Date
Made by S.A.	Revision
Checked by H.L. Joseph	Sheet # 1 of 2

MARK	NO	SIZE	LENGTH	REMARKS
HB189	238	1" x 1/2"	12'-9"	Vert. - Rbt.
H260	119	1" x 1/2"	26'-0"	Long. - Top of Slab
CB80	120	1" x 1/2"	8'-0"	Vert. - Rbt.
CB400	119	1" x 1/2"	40'-0"	Long. - Bot. of Slab - Hooked
F236	104	1/2" x 1/2"	27'-6"	Trans. - Slab & Rbt.
BB20	20	1/2" x 1/2"	1'-9"	Stirrups - Slab
BB21	60	1/2" x 1/2"	2'-1"	"
BB22	60	1/2" x 1/2"	2'-2"	"
BB23	60	1/2" x 1/2"	2'-3"	"
BB24	60	1/2" x 1/2"	2'-4"	"
BB25	60	1/2" x 1/2"	2'-5"	"
BB26	60	1/2" x 1/2"	2'-6"	"
BB27	60	1/2" x 1/2"	2'-7"	"
BB28	60	1/2" x 1/2"	2'-8"	"
BB29	60	1/2" x 1/2"	2'-9"	"
BB30	60	1/2" x 1/2"	2'-10"	"
BB31	60	1/2" x 1/2"	2'-11"	"
BB32	60	1/2" x 1/2"	2'-12"	"
BB33	60	1/2" x 1/2"	2'-13"	"
BB34	60	1/2" x 1/2"	2'-14"	"
BB35	60	1/2" x 1/2"	2'-15"	"
BB36	60	1/2" x 1/2"	2'-16"	"
BB37	60	1/2" x 1/2"	2'-17"	"
BB38	60	1/2" x 1/2"	2'-18"	"
BB39	60	1/2" x 1/2"	2'-19"	"
BB40	60	1/2" x 1/2"	2'-20"	"
BB41	60	1/2" x 1/2"	2'-21"	"
BB42	60	1/2" x 1/2"	2'-22"	"
BB43	60	1/2" x 1/2"	2'-23"	"
BB44	60	1/2" x 1/2"	2'-24"	"
BB45	60	1/2" x 1/2"	2'-25"	"
BB46	60	1/2" x 1/2"	2'-26"	"
BB47	60	1/2" x 1/2"	2'-27"	"
BB48	60	1/2" x 1/2"	2'-28"	"
BB49	60	1/2" x 1/2"	2'-29"	"
BB50	60	1/2" x 1/2"	2'-30"	"

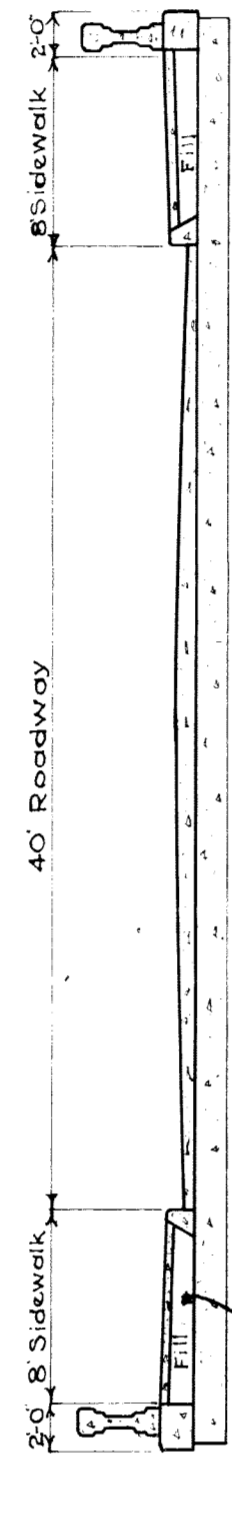
Bill of Material  
 1-2 1/2 - 3 1/2 Concrete 407 Cu. Yds.  
 1-1 1/2 - 2 1/2 Concrete 26 Cu. Yds.  
 Reinforcing Steel 6828/1  
 Pipes Required - 104



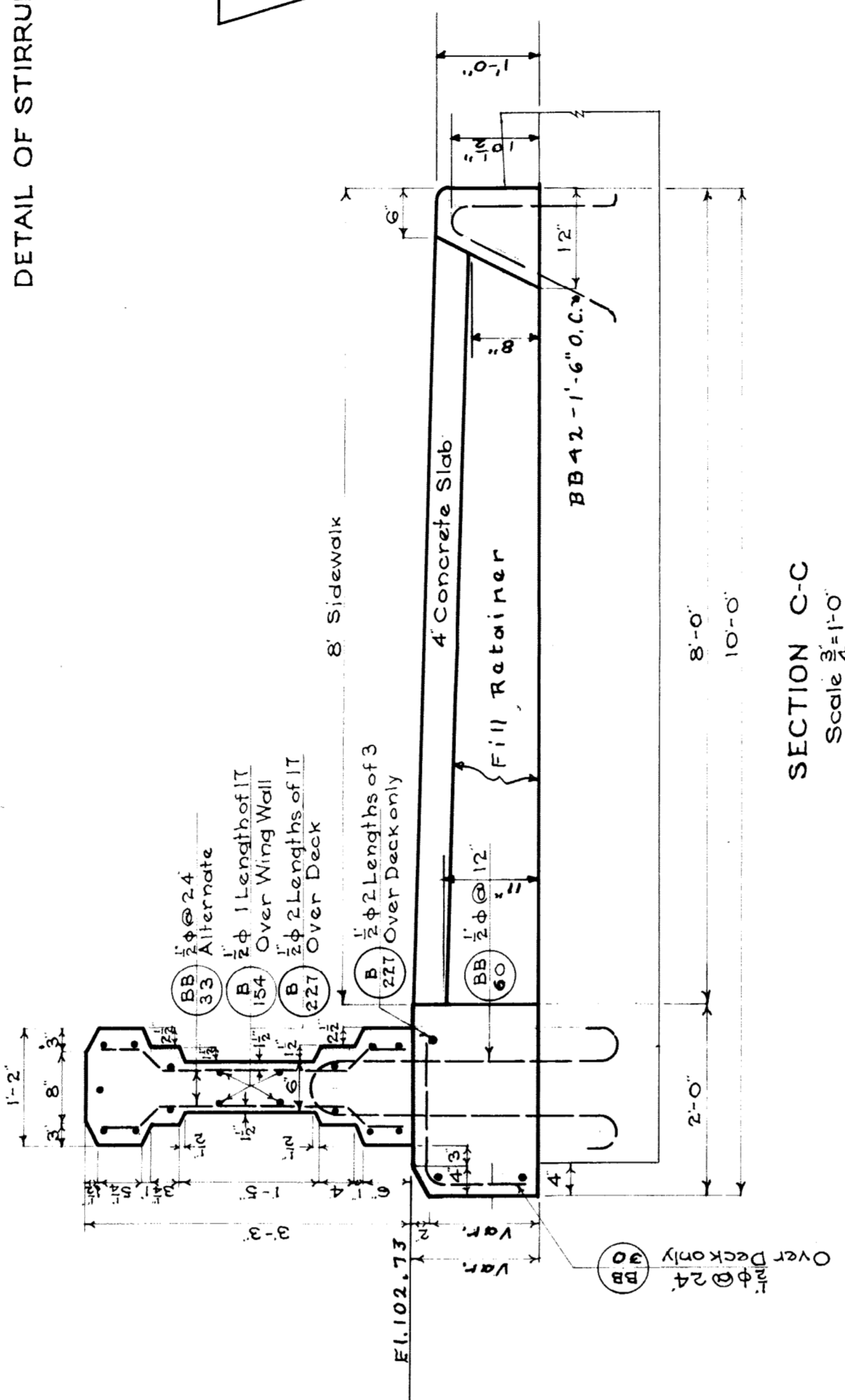
DETAIL OF STIRRUPS



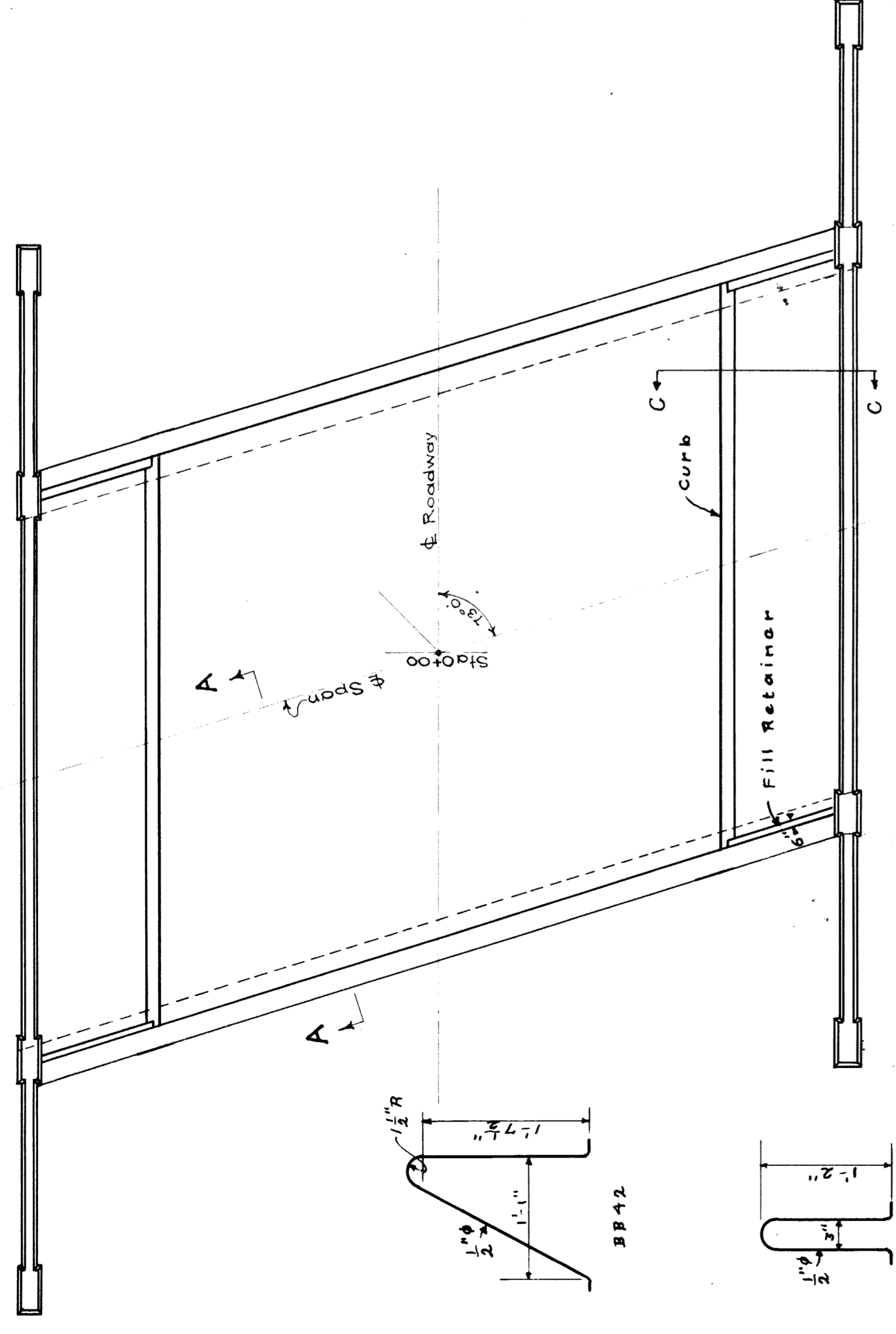
INTRADOS LAYOUT



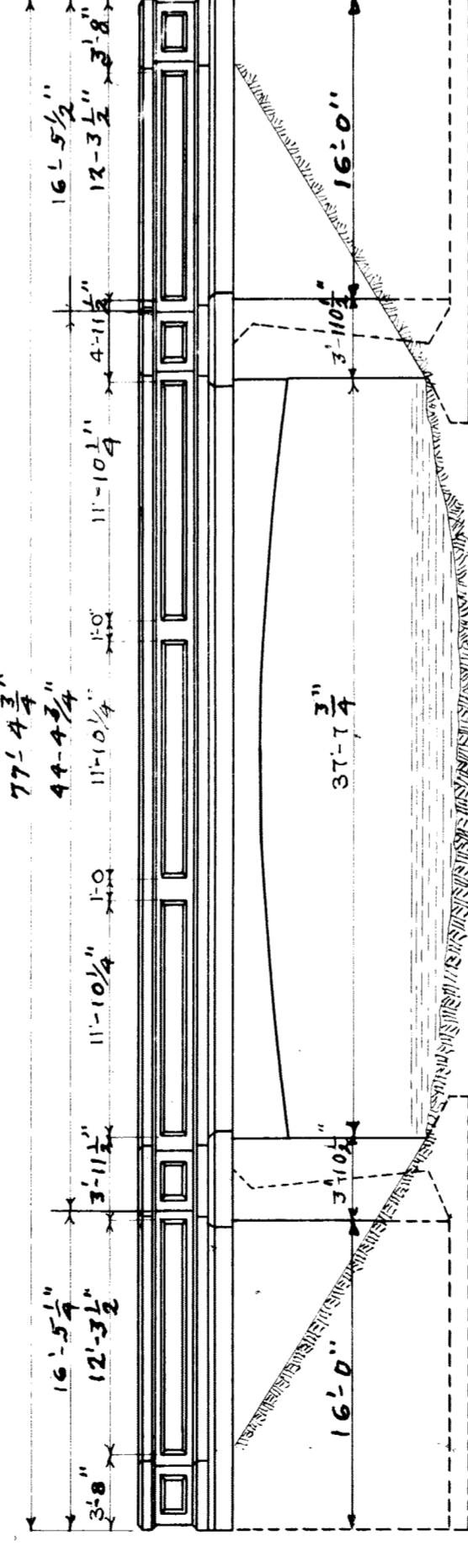
CROSS SECTION OF DECK  
 At Right angle to  $\Phi$  of Roadway  
 Scale 1/8" = 1'-0"



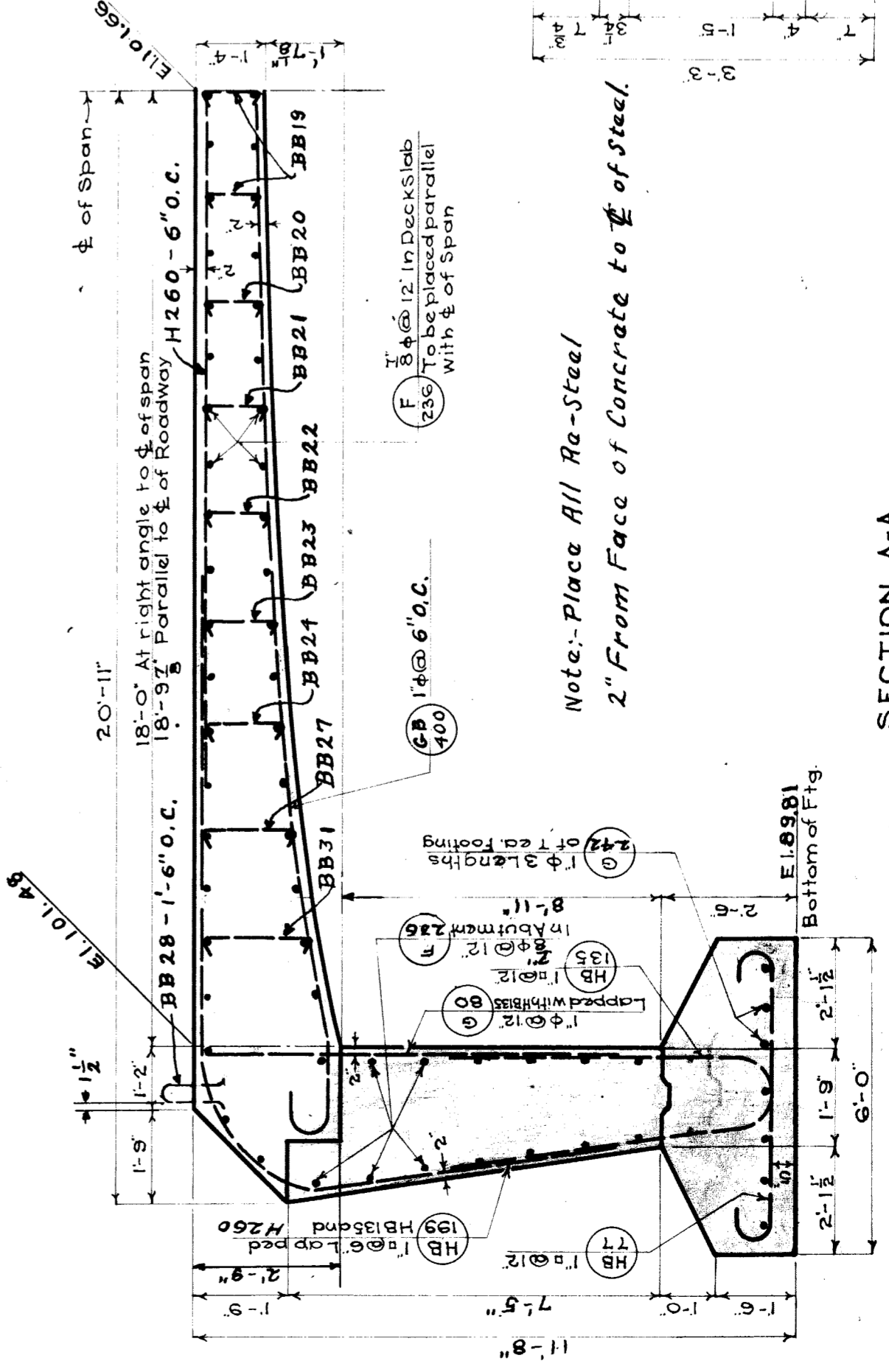
SECTION C-C  
 Scale 3/8" = 1'-0"



PLAN OF RAIL & CURB  
 Scale 1/8" = 1'-0"

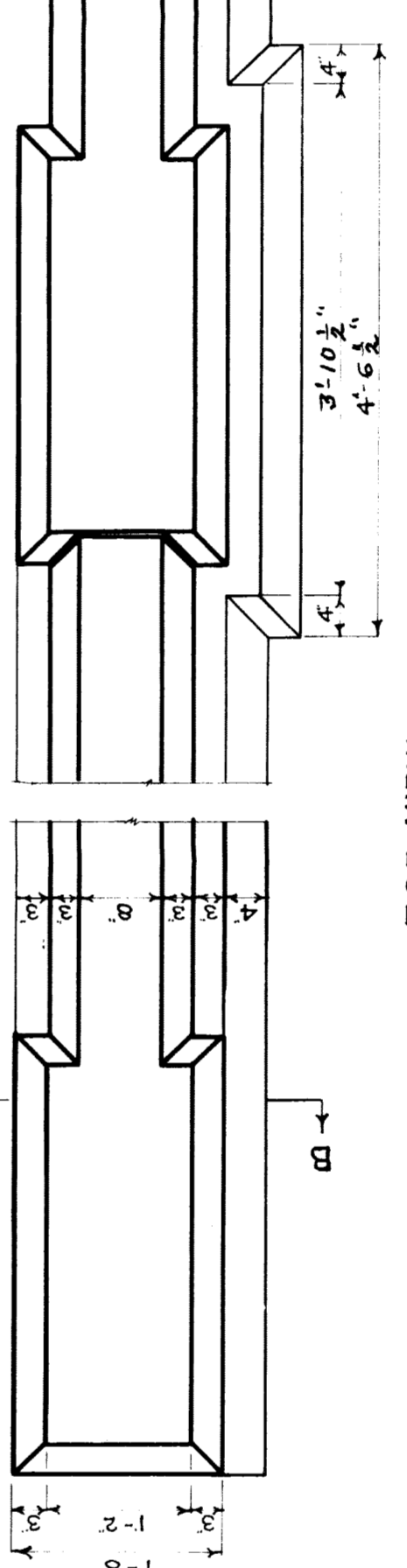


SIDE ELEVATION  
 Scale 1/8" = 1'-0"

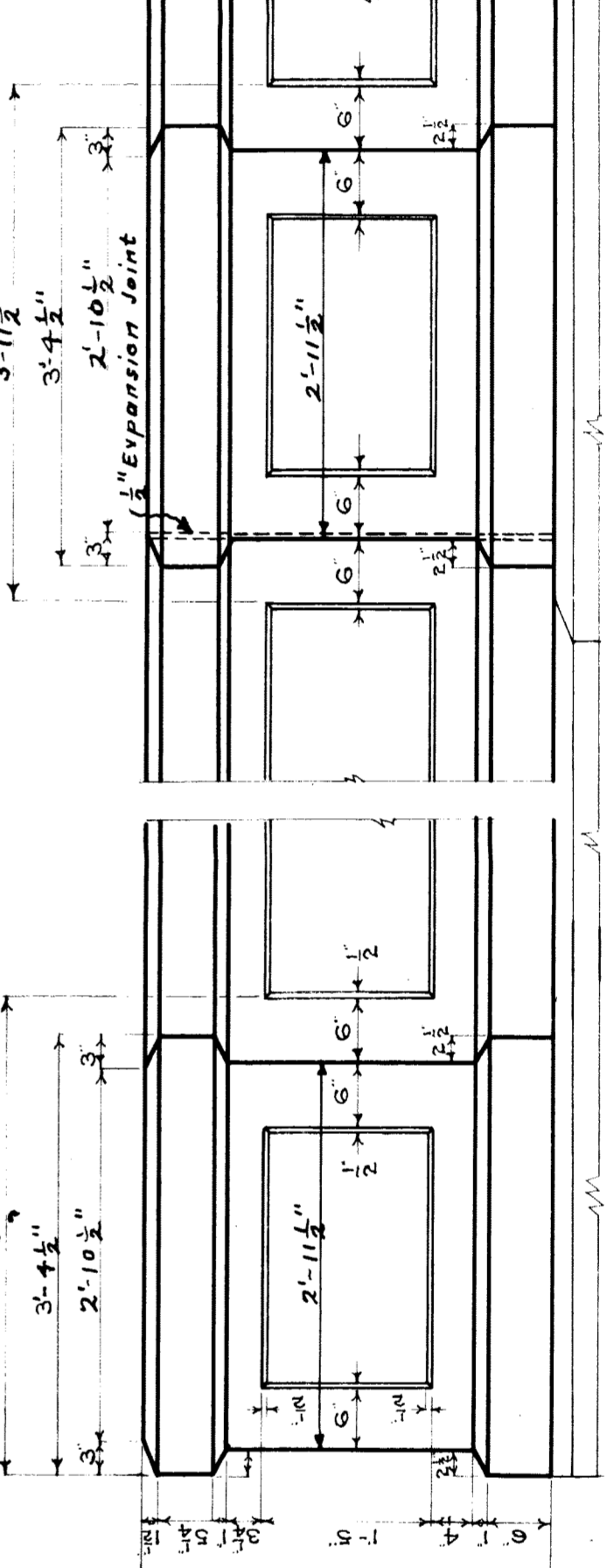


SECTION A-A  
 Scale 1/8" = 1'-0"

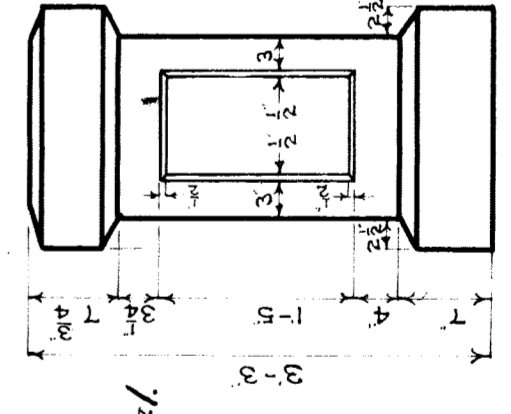
Note: Place All Re-Steel  
 2" From Face of Concrete to  $\Phi$  of Steel.



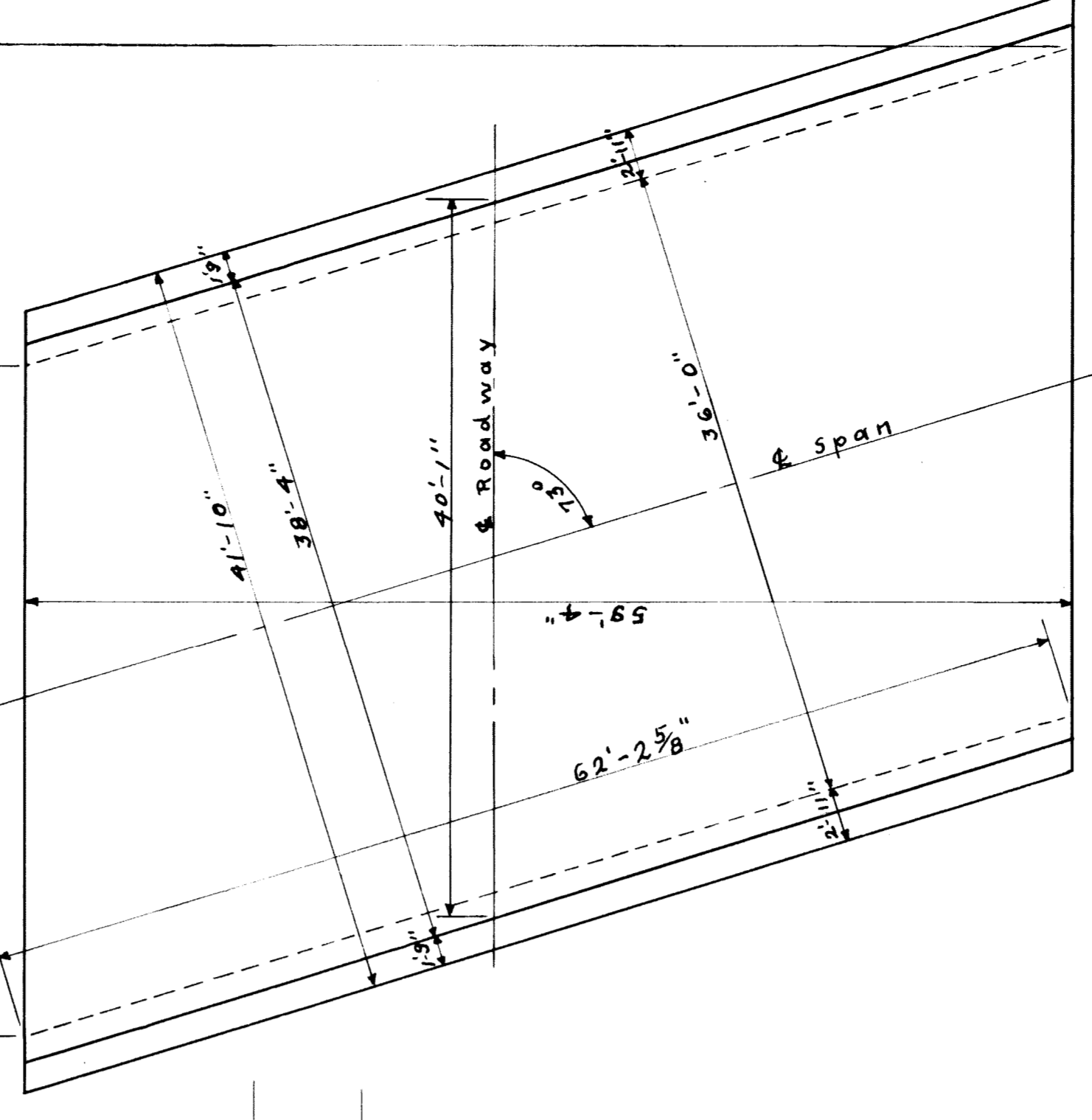
TOP VIEW



ELEVATION



END VIEW



PLAN OF BRIDGE  
 SCALE: 1/8" = 1'-0"

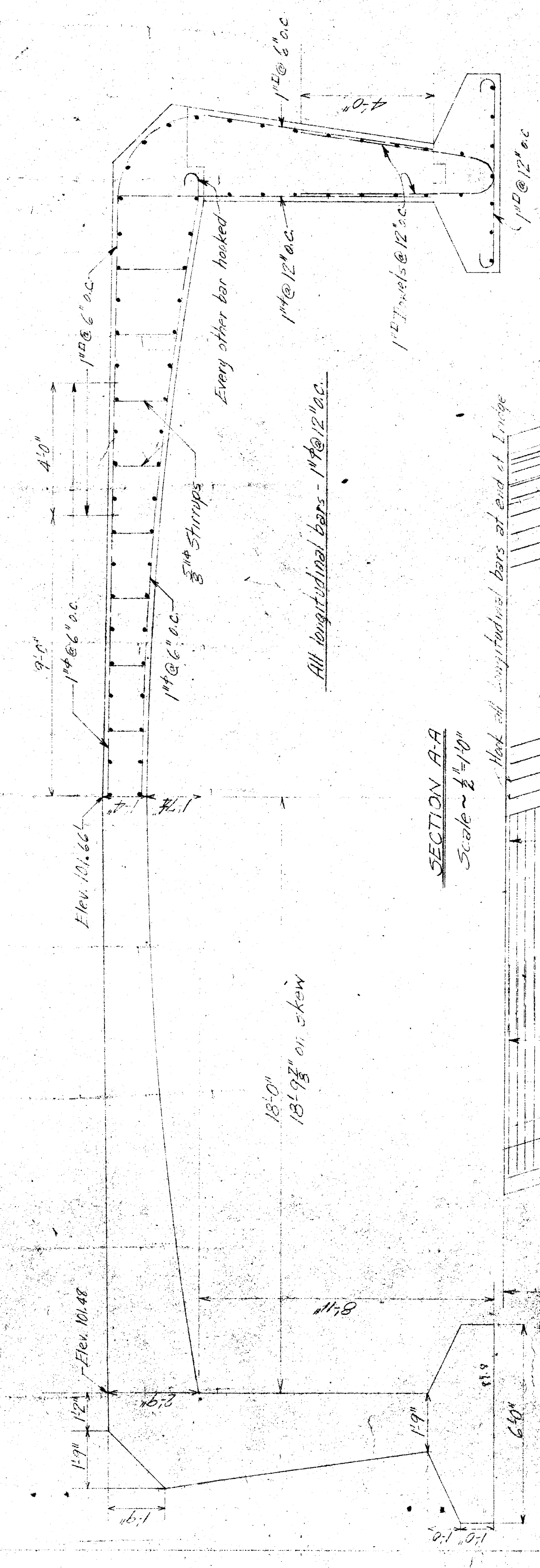
For General Notes See Sheet 1  
 Field Book 732

CITY OF DETROIT  
 DEPARTMENT OF PUBLIC WORKS  
 OFFICE OF CITY ENGINEER  
 BUREAU OF STRUCTURES  
**BELLE ISLE BRIDGE No 18**  
 SUPERSTRUCTURE  
 AND  
 ABUTMENT DETAILS

Scale - As shown  
 Made by S.A.  
 Checked by M.L. Joseph  
 Date  
 Revision  
 Sheet # 2 of 2



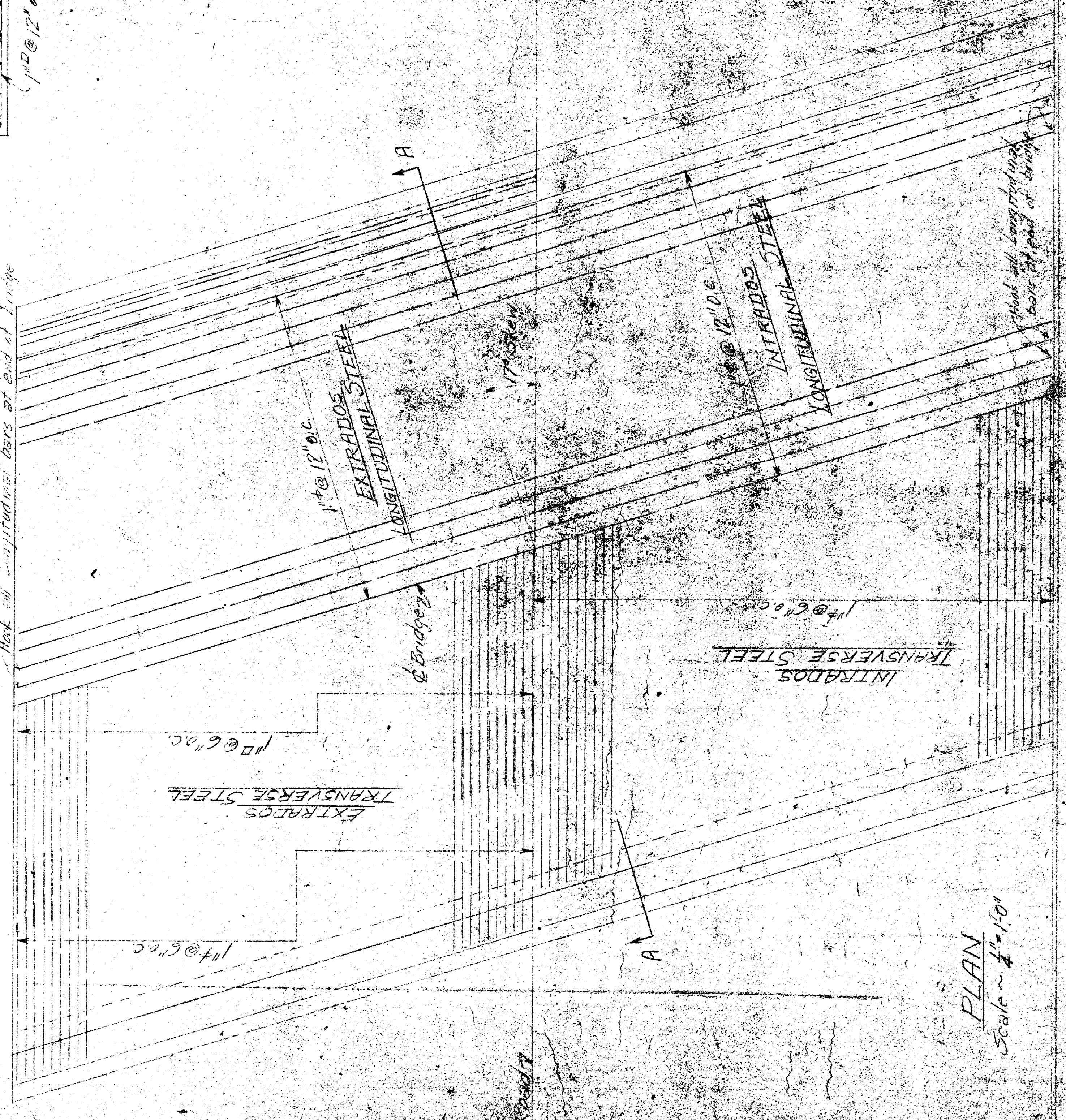
# 2



18'-0\"/>

SECTION A-A  
Scale ~ 1/4" = 1'-0"

Mark all longitudinal bars at end of 1' edge

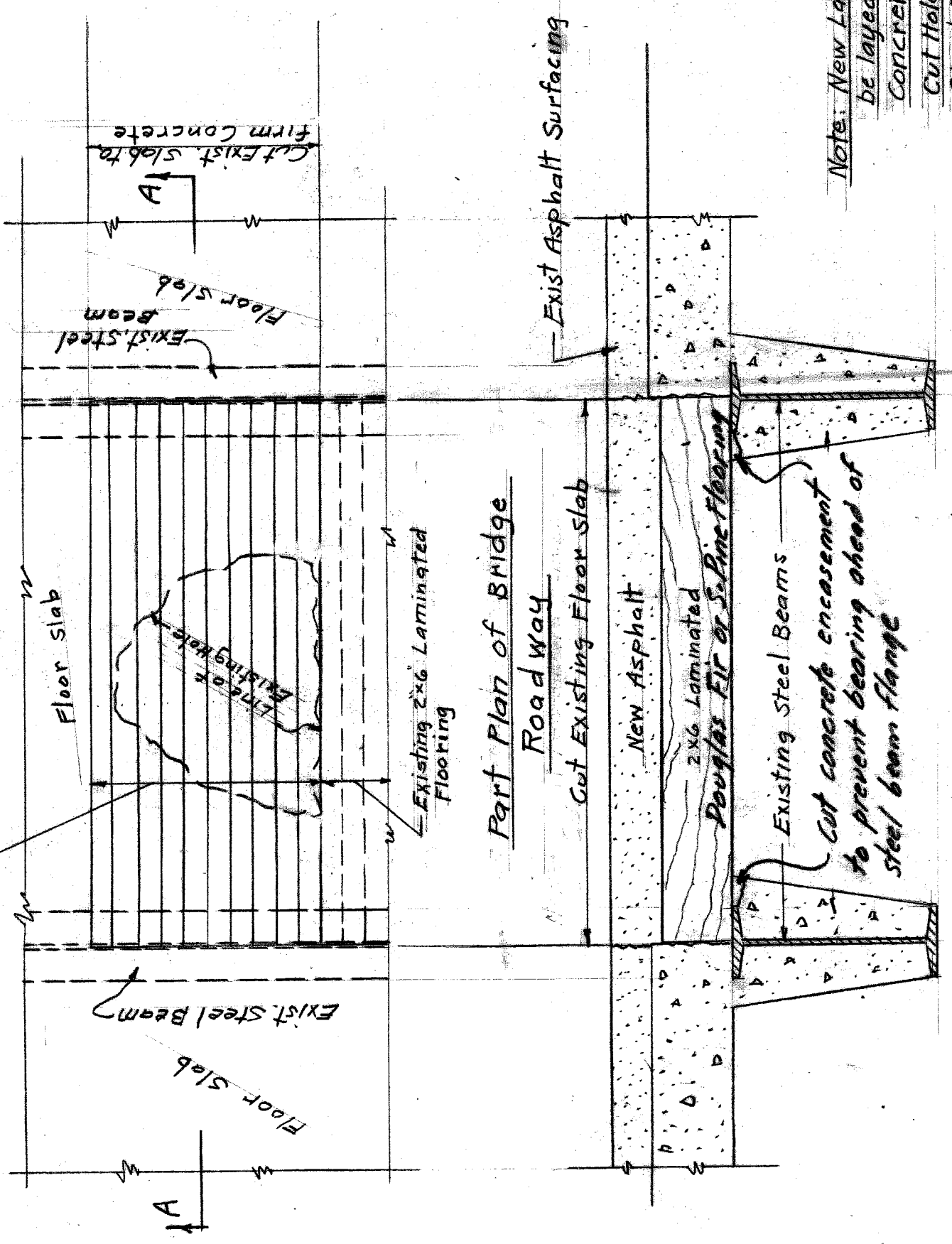


PLAN  
Scale ~ 1/4" = 1'-0"

Mark all longitudinal bars at end of bridge



New 2x6 Laminated Flooring to be  
Constructed same as existing Flooring

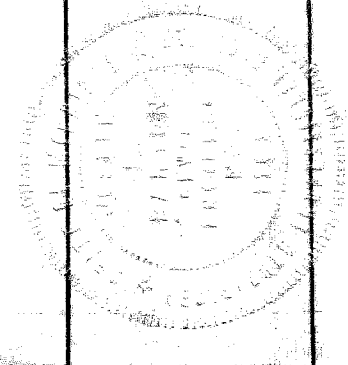


Exist Asphalt Surfacing

Note: New Laminated Flooring to  
be laced tight against adjacent  
Concrete Slab.  
Cut Hole transversely to & of  
Steel Beams no more & no less

No Scale

Section "A-A"



DRAWN BY DMS/SPK	APPROVED M. Wallace ENGINEER OF STREETS	CITY OF DETROIT DEPARTMENT OF PUBLIC WORKS CITY ENGINEERS OFFICE BUREAU OF DESIGN	BELLE ISLE BRIDGES BRIDGE No. 18 REPAIRS TO ROADWAY SLAB	SHEET 1 OF 1 SHEETS
				JMS CHECKED BY

Draw. # 4