

**CITY OF DETROIT
 COLEMAN A. YOUNG -- MAYOR
 CITY ENGINEERING DEPARTMENT**

PLANS FOR PROPOSED BRIDGE REPAIRS

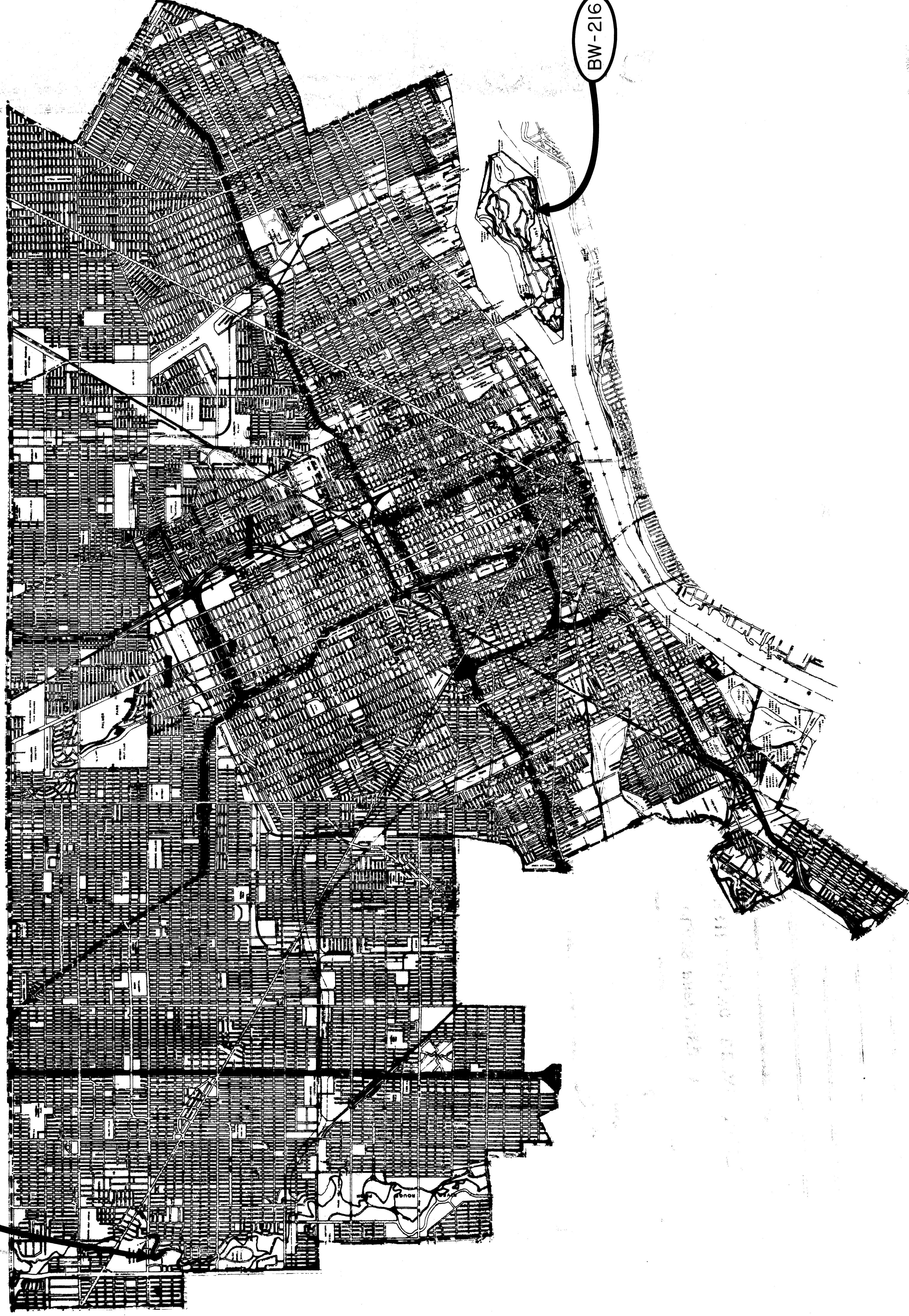
FOR

DEPARTMENT OF PUBLIC WORKS

WOODSIDE OVER CANAL (BELLE ISLE) BW-216

RIDGE ROAD OVER ROUGE RIVER BW-283

BW-283



INDEX OF SHEETS

SHEET NO.	TITLE SHEET	DESCRIPTION
1.	BRIDGE REPAIR PLAN (BW-216)	
2.	BRIDGE REPAIR DETAILS (BW-216)	
3.	RAILING REPLACEMENT (BW-283)	
4.	GUARDRAIL REPLACEMENT (BW-283)	
5.		

PROJECT:

BRIDGE REPAIRS FOR WOODSIDE OVER CANAL
 (BELLE ISLE) AND RIDGE ROAD OVER ROUGE
 RIVER.

**CONTRACT
 NO.**

PW-6751

**PLANS PREPARED BY
 CITY ENGINEERING DEPARTMENT**

RECOMMENDED
 FOR APPROVAL

Mark A. ...
 CIVIL ENGINEER

4-21-87
 DATE

RECOMMENDED
 FOR APPROVAL

John J. ...
 STRUCTURAL ENGINEER

4-21-87
 DATE

APPROVED

James A. ...
 HEAD ENGINEER

4-21-87
 DATE

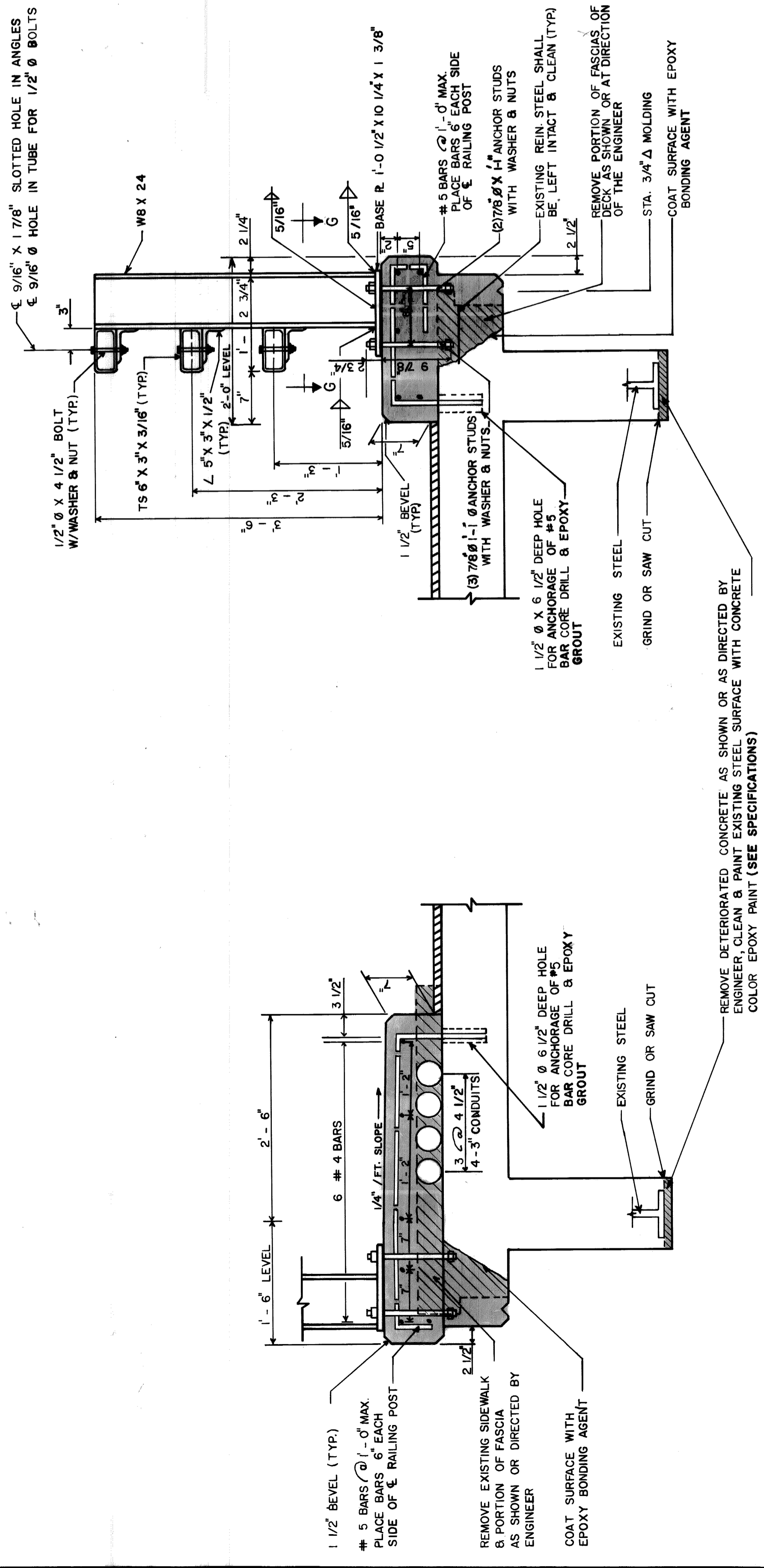
APPROVED

C. L. ...
 DIRECTOR

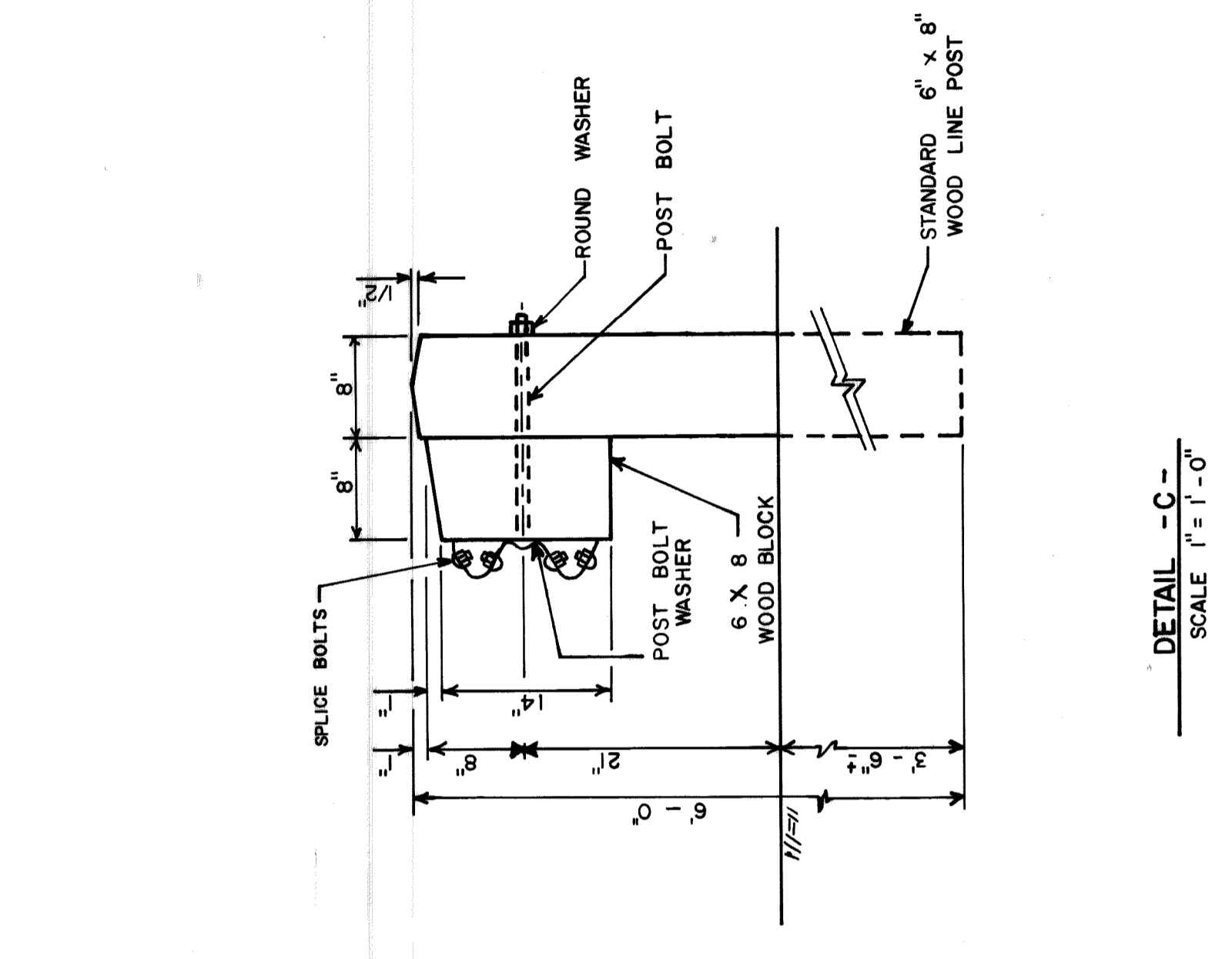
9-21-87
 DATE

DATE 10/31/86

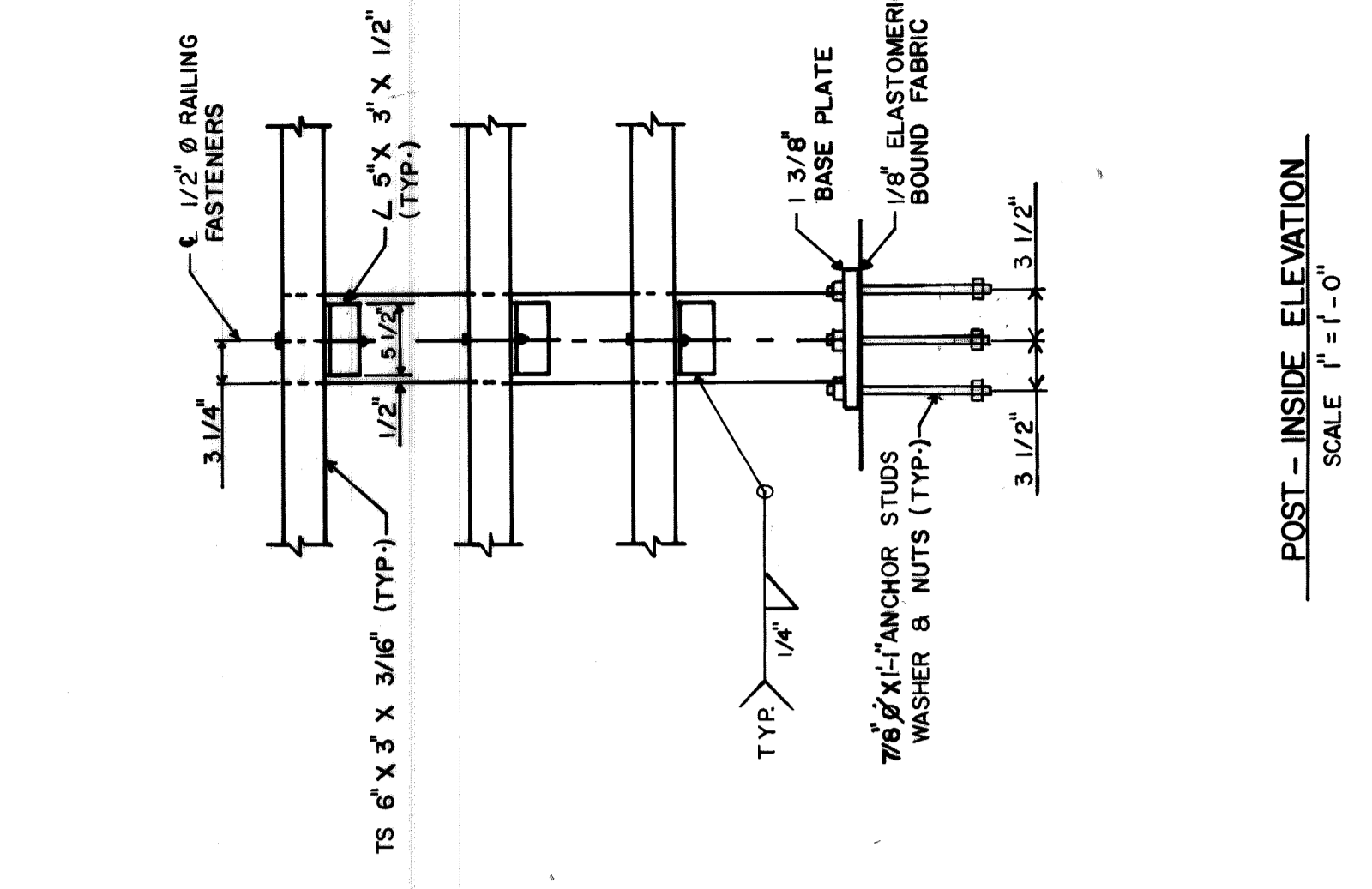
DRWG. NO. 1 of 5



DETAIL - A
SCALE 1" = 1'-0"

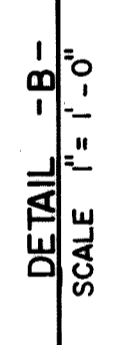


DETAIL - C
SCALE 1" = 1'-0"

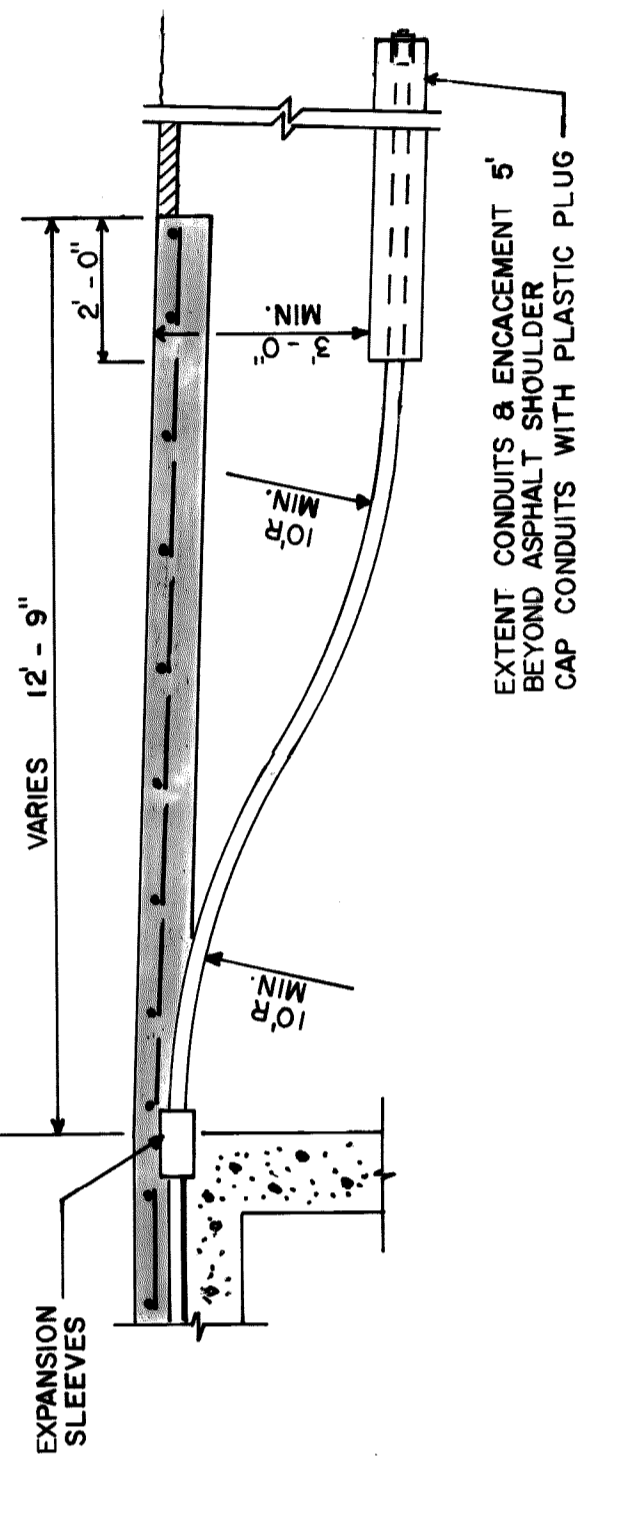


POST - INSIDE ELEVATION
SCALE 1" = 1'-0"

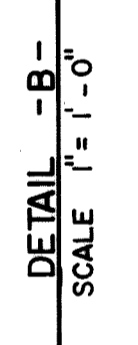
DETAIL - B
SCALE 1" = 1'-0"



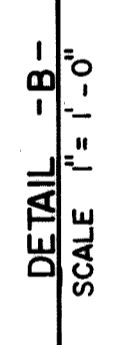
SECTION F - F
SCALE 3/8" = 1'-0"



DETAIL - B
SCALE 1" = 1'-0"



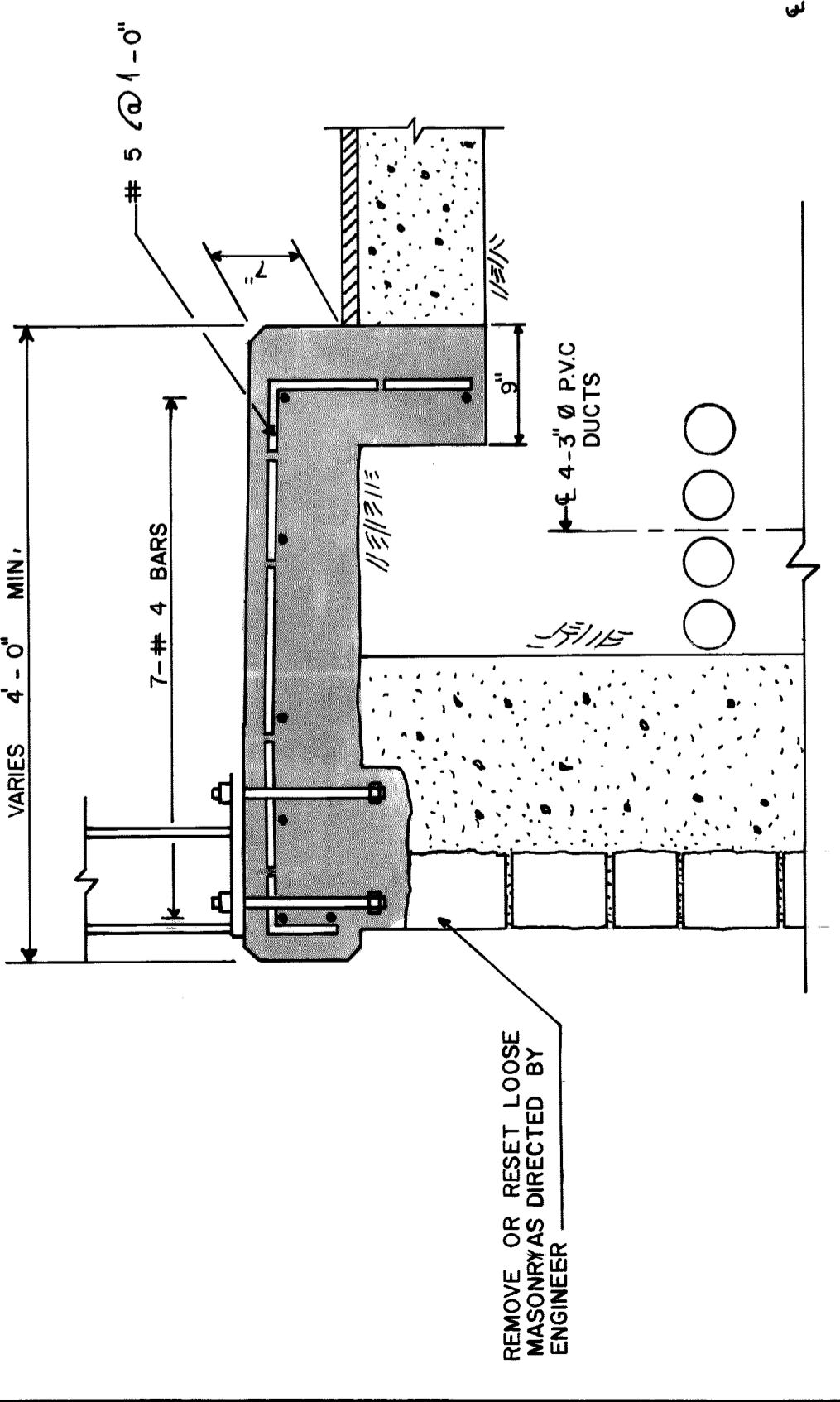
DETAIL - B
SCALE 1" = 1'-0"



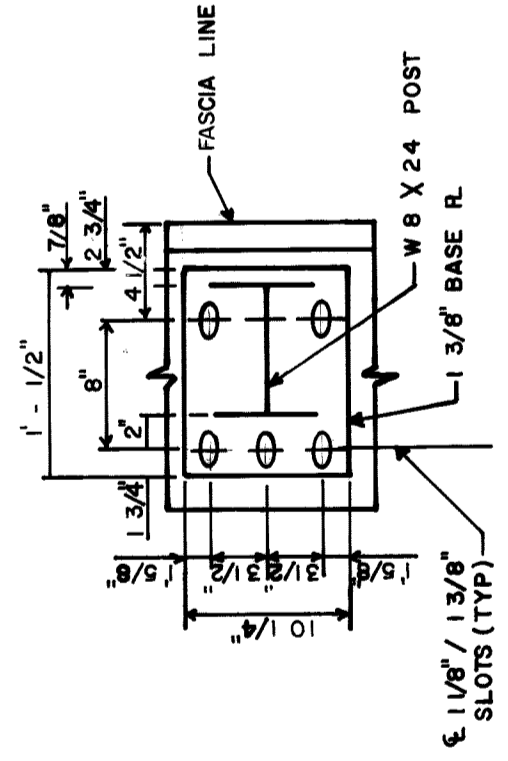
DETAIL - B
SCALE 1" = 1'-0"

- GENERAL NOTES**
- EXCEPT WHERE OTHERWISE INDICATED ON THESE PLANS OR IN THE PROPOSALS AND SUPPLEMENTAL SPECIFICATIONS CONTAINED THEREIN, ALL WORKMANSHIP AND MATERIALS SHALL BE IN ACCORDANCE WITH MICHIGAN DEPARTMENT OF TRANSPORTATION STANDARD SPECIFICATIONS FOR CONSTRUCTION, 1984 EDITION.
 - CONCRETE GRADE 45D $F_c = 4000$ PSI
 - STEEL REINFORCEMENT (EPOXY COATED) $F_y = 60000$ PSI
 - FOR BEAM GUARD RAIL TYPE B AND BRIDGE RAILING NOTES AND DETAILS (SEE SPECIFICATIONS)
 - THE CONTRACTOR SHALL FURNISH INSTALL AND MAINTAIN ALL NECESSARY TRAFFIC CONTROL DEVICES AND SIGNALS UNDER TRAFFIC MAINTENANCE AND CONTROL, SECTION 651 OF MDOT STANDARD SPECIFICATION
 - BITUMINOUS FALSE JOINTS SHALL BE RAN OVER AS IT THEY DID NOT EXIST. THEY SHOULD THEN BE SAW CUT TO CUT TO A DEPTH OF 1/2" ROUND BUTY RUBBER BACK UP ROD SHALL BE INSERTED AND THE TOP 1/2" FILLED WITH ALLED PRODUCTS #9005, HOT POURED SEALANT, OR APPROVED EQUAL
 - APPLY PENETRATING CONCRETE SEALER TO SIDE WALK, BRUSH BLOCK AND CURB FACE (SEE SPECIFICATIONS)
 - PROVIDE EXPANSION SLEEVES FOR 3" SCHEDULE 80 PVC CONDUIT AT ABUTMENTS
 - METHOD OF DRILLING SHALL BE WITH HIGH SPEED ROTARY DRILL APPROVED BY THE ENGINEER
 - BLAST CLEAN EXPOSED REBARS THOSE BARS THAT HAVE LOST 1/4" OR MORE OF THEIR ORIGINAL DIAMETER SHALL BE SUPPLEMENTED BY SPLICING IN NEW BARS.
 - WATER REPELLENT SEALANT SHALL BE "HYDROZO CLEAR 56" MANUFACTURED BY HYDROZO COATINGS CO OR APPROVED EQUAL. APPLICATION METHOD SHALL BE IN ACCORDANCE WITH THE MANUFACTURER RECOMMENDATION.

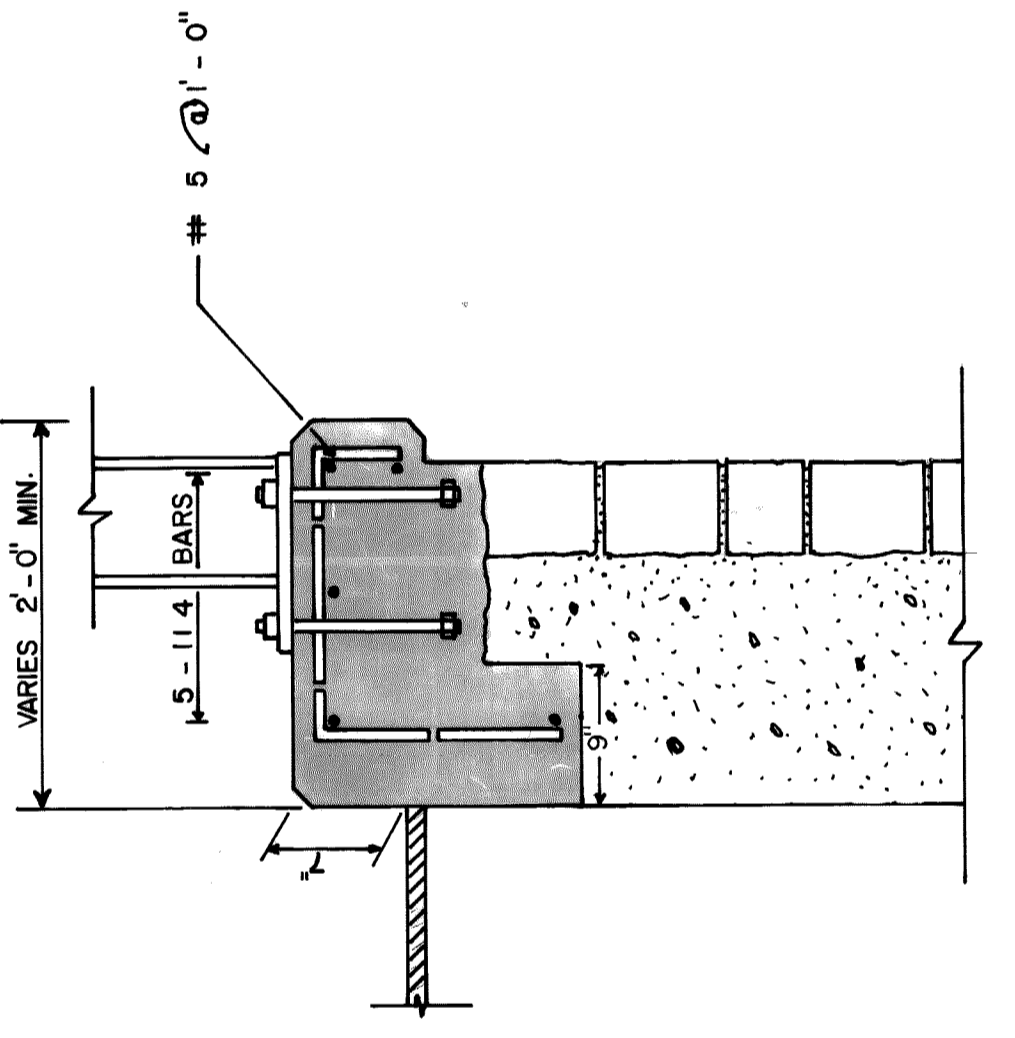
SECTION B - B
SCALE 1" = 1'-0"



SECTION G - G
SCALE 1" = 1'-0"



SECTION C - C
SCALE 1" = 1'-0"



CITY OF DETROIT CITY ENGINEERING DEPARTMENT FOR DEPARTMENT OF PUBLIC WORKS		WOODSIDE BRIDGE OVER CANEL (BW - 216) BRIDGE REPAIR DETAILS		SHEET 3 OF 5 SHEETS
APPROVED: <i>[Signature]</i> STRUCTURAL ENGINEER		DESIGNED BY H. DICKOW		CONTRACT PW-6751
DRAWN BY <i>[Signature]</i> HEAD ENGINEER		DRAWN BY H. DICKOW		ASSIGNMENT NO.
CHECKED BY M. CHAN		TRACED BY		DATE 10-31-86
REVISIONS LOCATED BY COORDINATES ON SHEET		COORD DESCRIPTION		
1		2		
3		4		
5		5		
6		6		
7		7		
8		8		
9		9		
10		10		
11		11		

