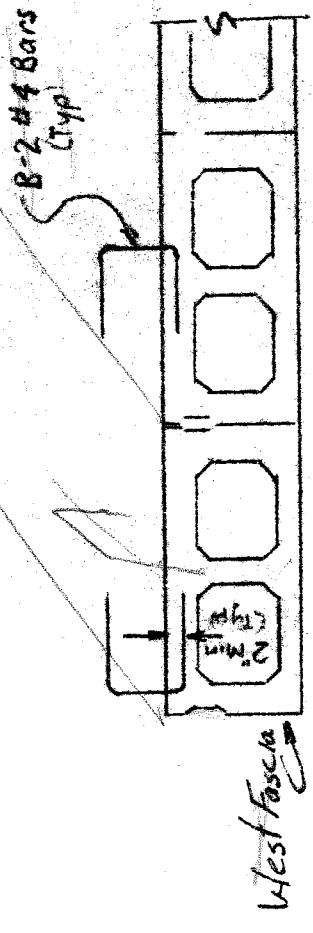
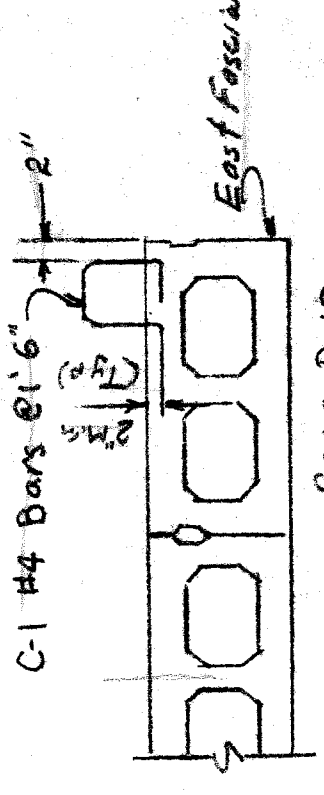


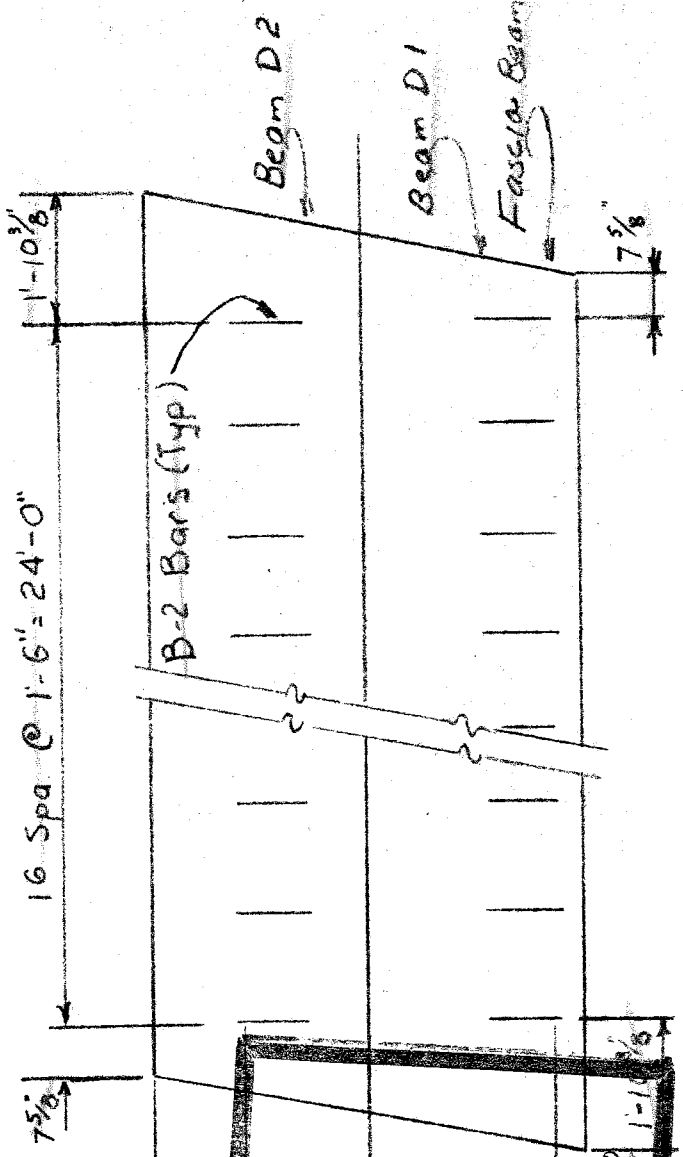
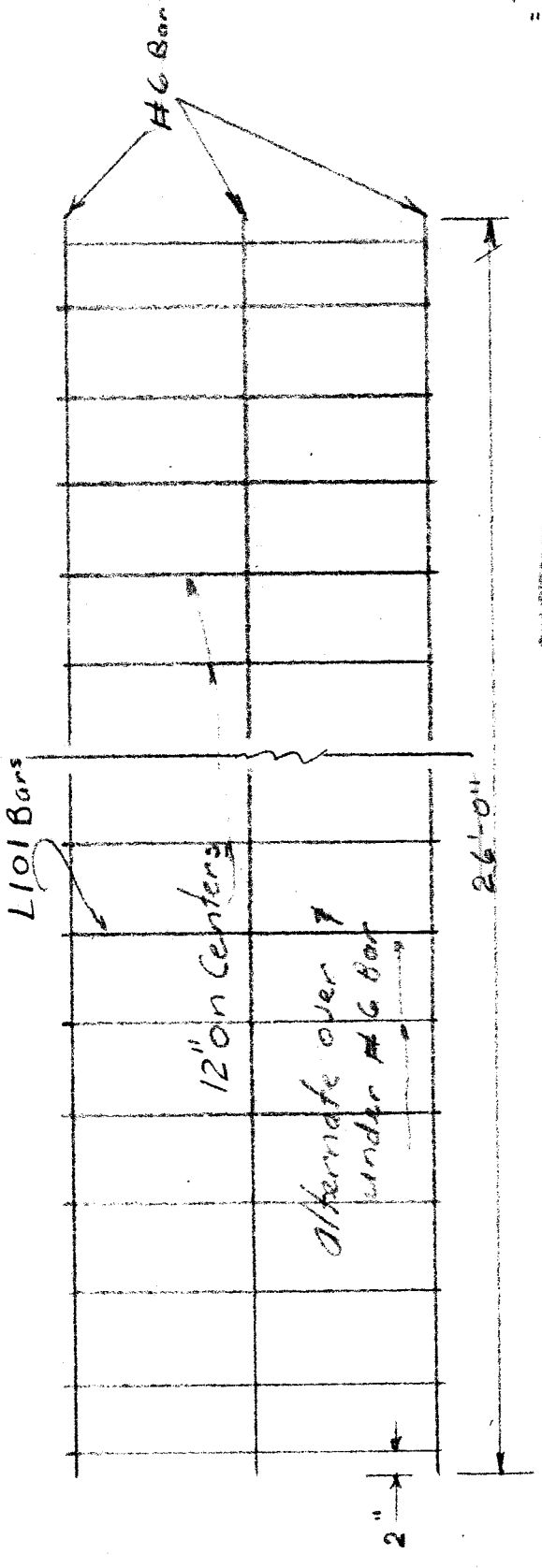
Elevation



Beams # D1 & D2
 Sidewalk Re-steel
 Detail (SH.1)



Beam D 10
 Curb Re-steel
 Detail (SH.1)



CITY OF DETROIT
 DEPARTMENT OF PUBLIC WORKS
 CITY ENGINEERS OFFICE
 BUREAU OF HIGHWAYS AND EXPRESSWAYS

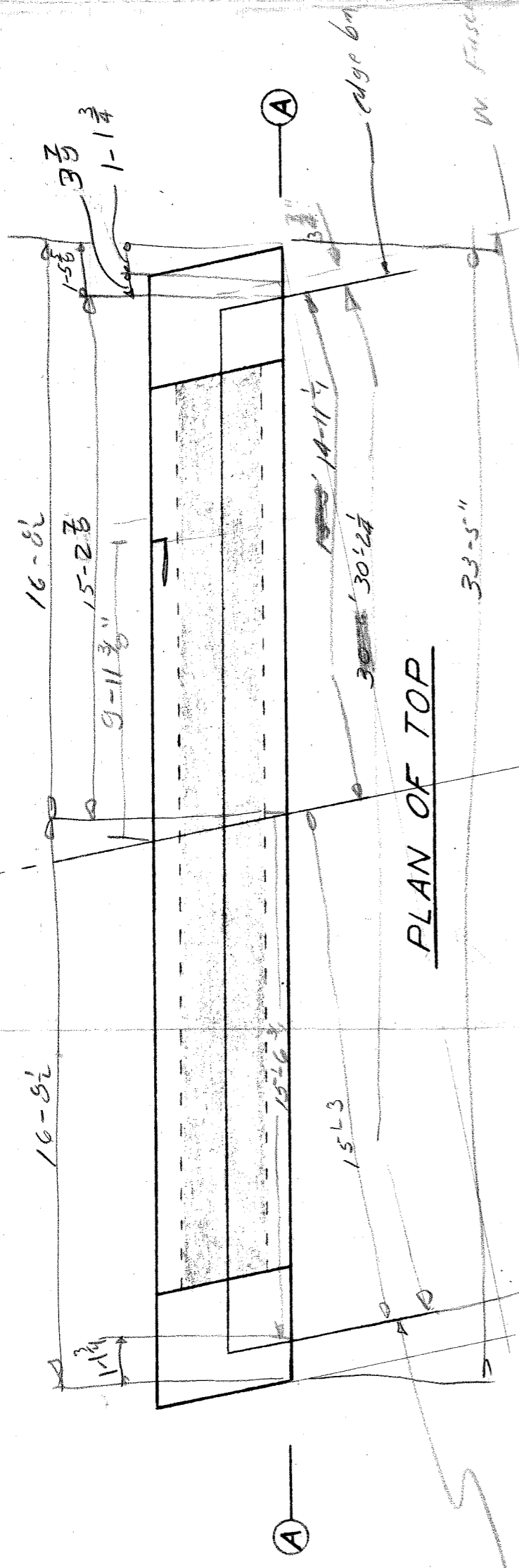
APPROVED

BY *[Signature]* DATE *[Date]*

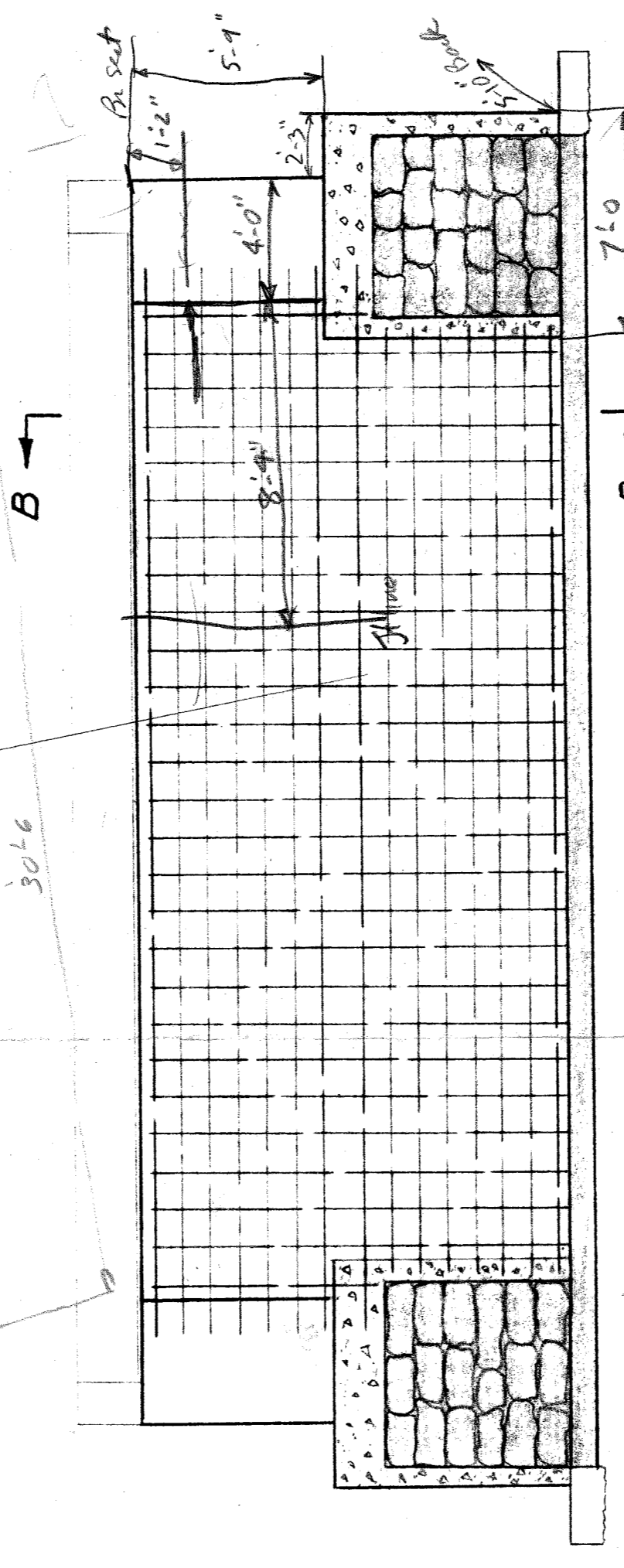
Beam Re-steel (Typ)

SIDEWALK STEEL REINFORCEMENT

PLAN



PLAN OF TOP



ELEVATION - ALONG LINE AA

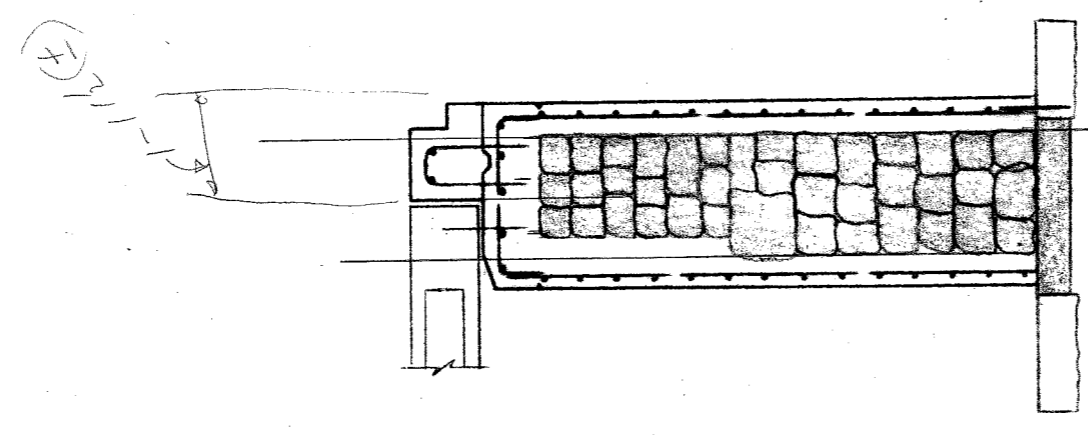
Scale 3/16" = 1'-0"

SECTION ALONG & BRIDGE

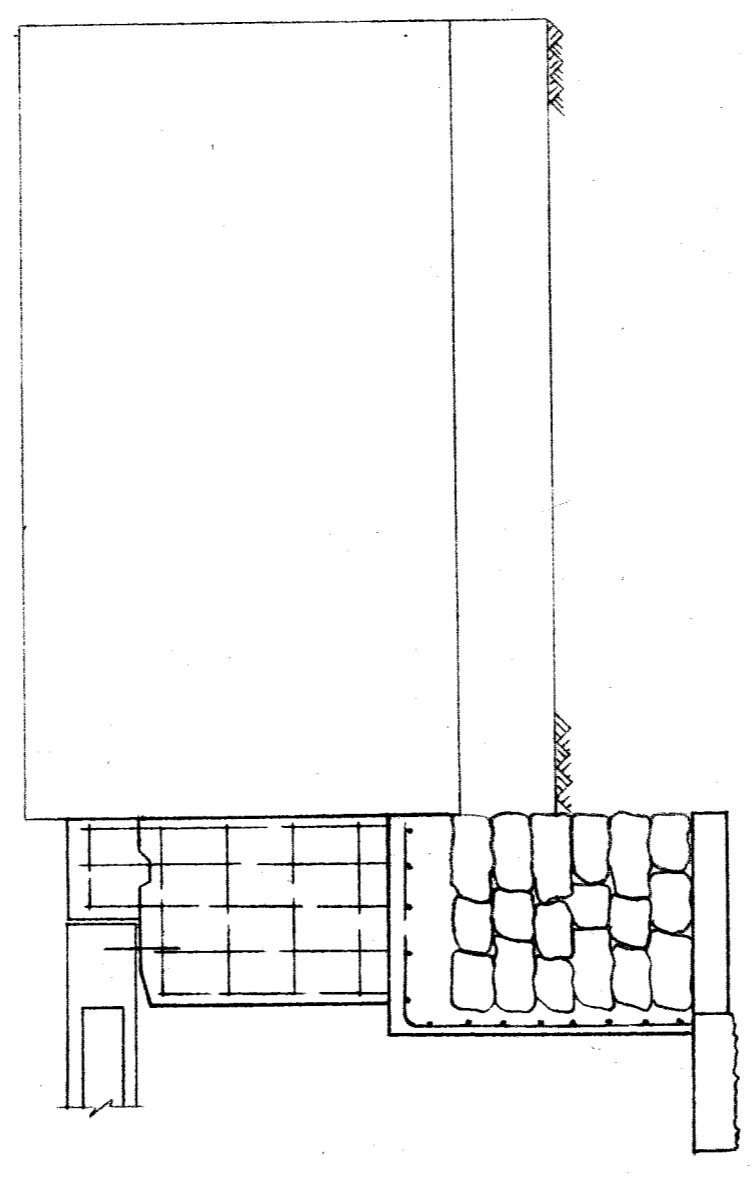
SECTION ALONG & BRIDGE



FOUNDATION PLAN



SECTION "B-B"



$$\frac{2 \cdot 8 \cdot 11}{1 - 11} = \frac{176}{-10} = -17.6$$

$$\frac{6 \cdot 10 \cdot 11}{1 - 11} = \frac{726}{-10} = -72.6$$

$$\frac{7 \cdot 6 \cdot 5}{1 - 11} = \frac{210}{-10} = -21$$

edges & E
br. fascia line

$$\frac{15-6 \frac{3}{4}}{15-2 \frac{3}{4}} = \frac{30-9 \frac{3}{4}}{30-9 \frac{3}{4}}$$

Handwritten signature or initials.