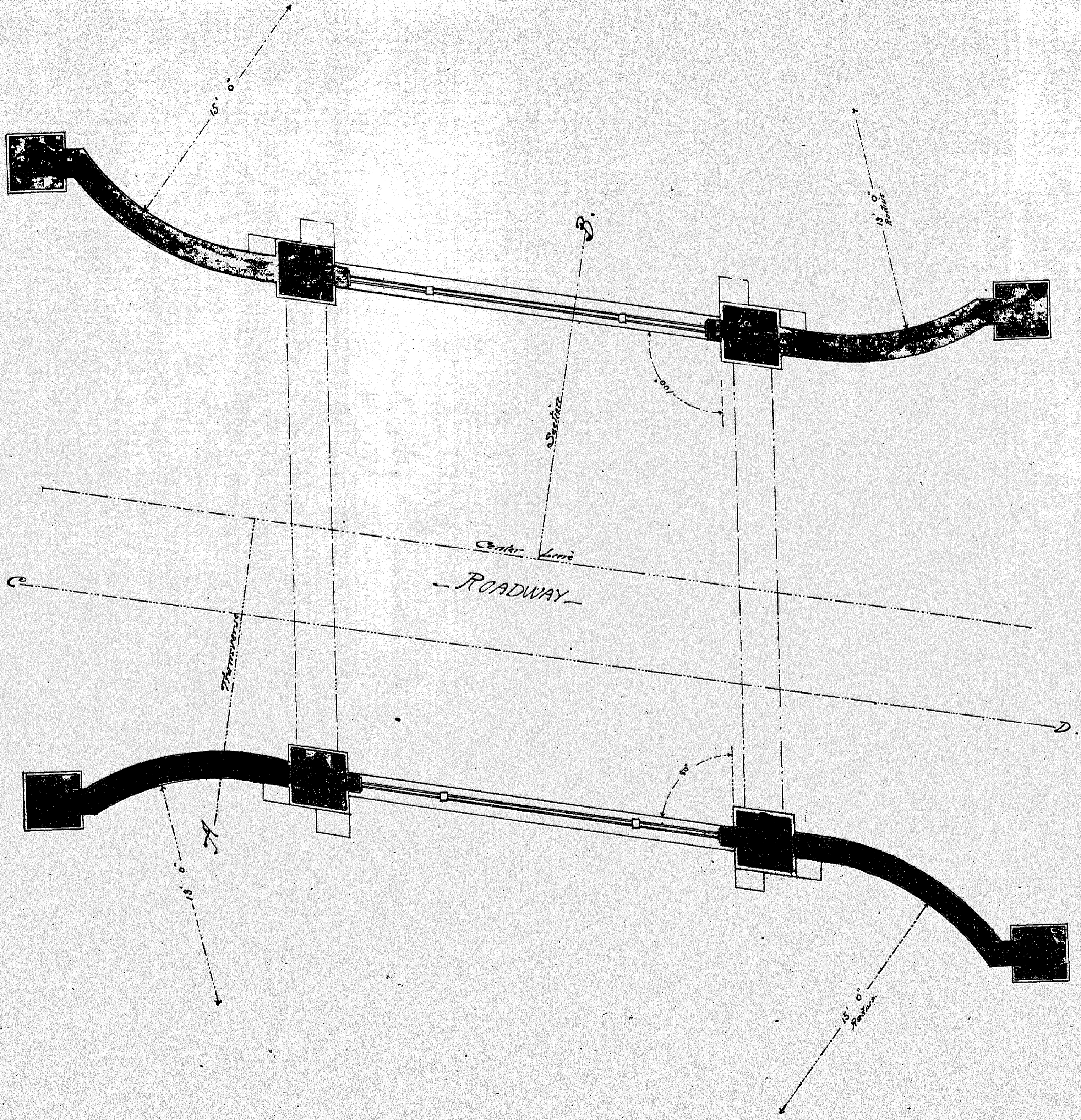


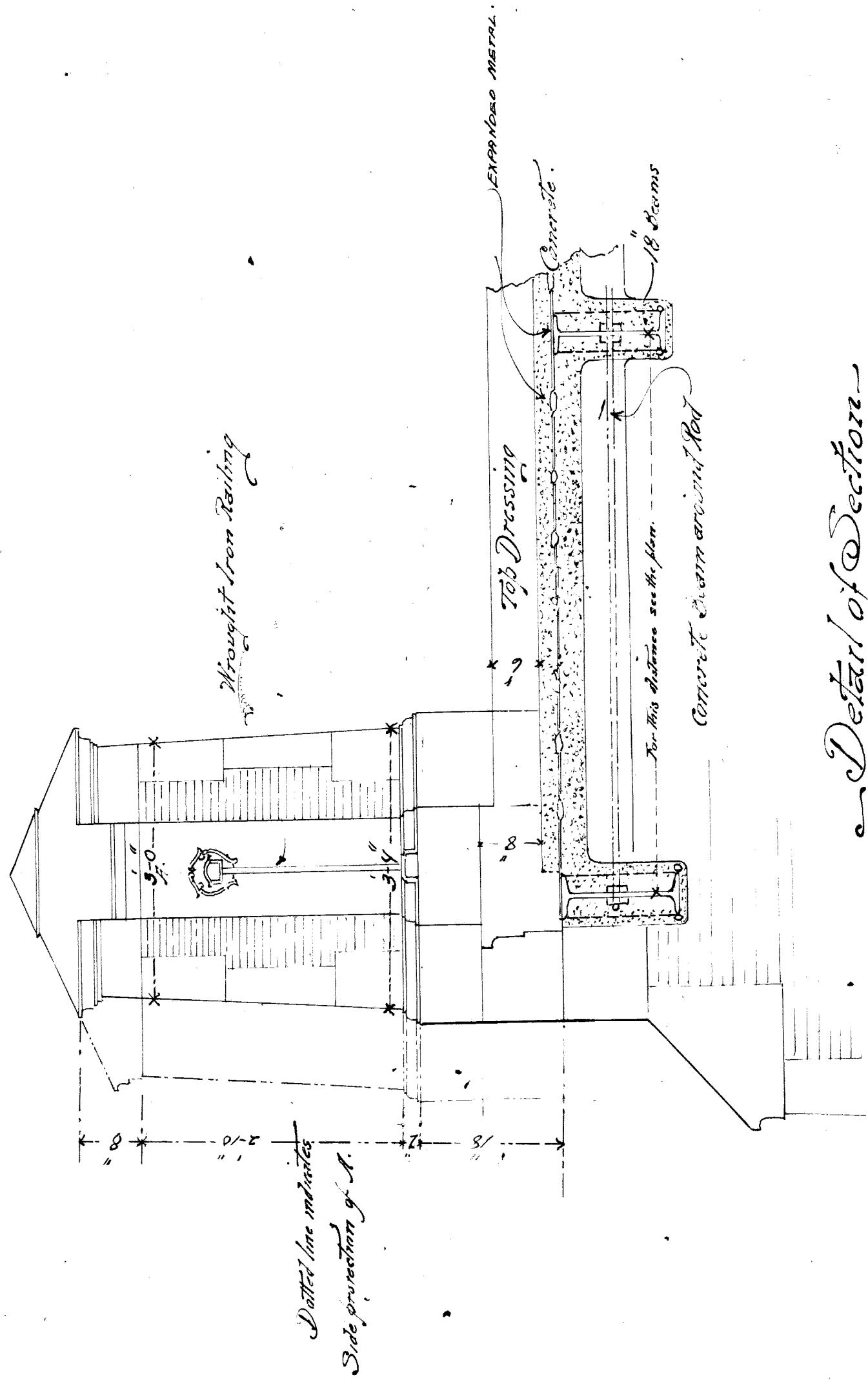
Longitudinal Section
Scale 1/4" = 1'-0"

BRIDGE No 1A.

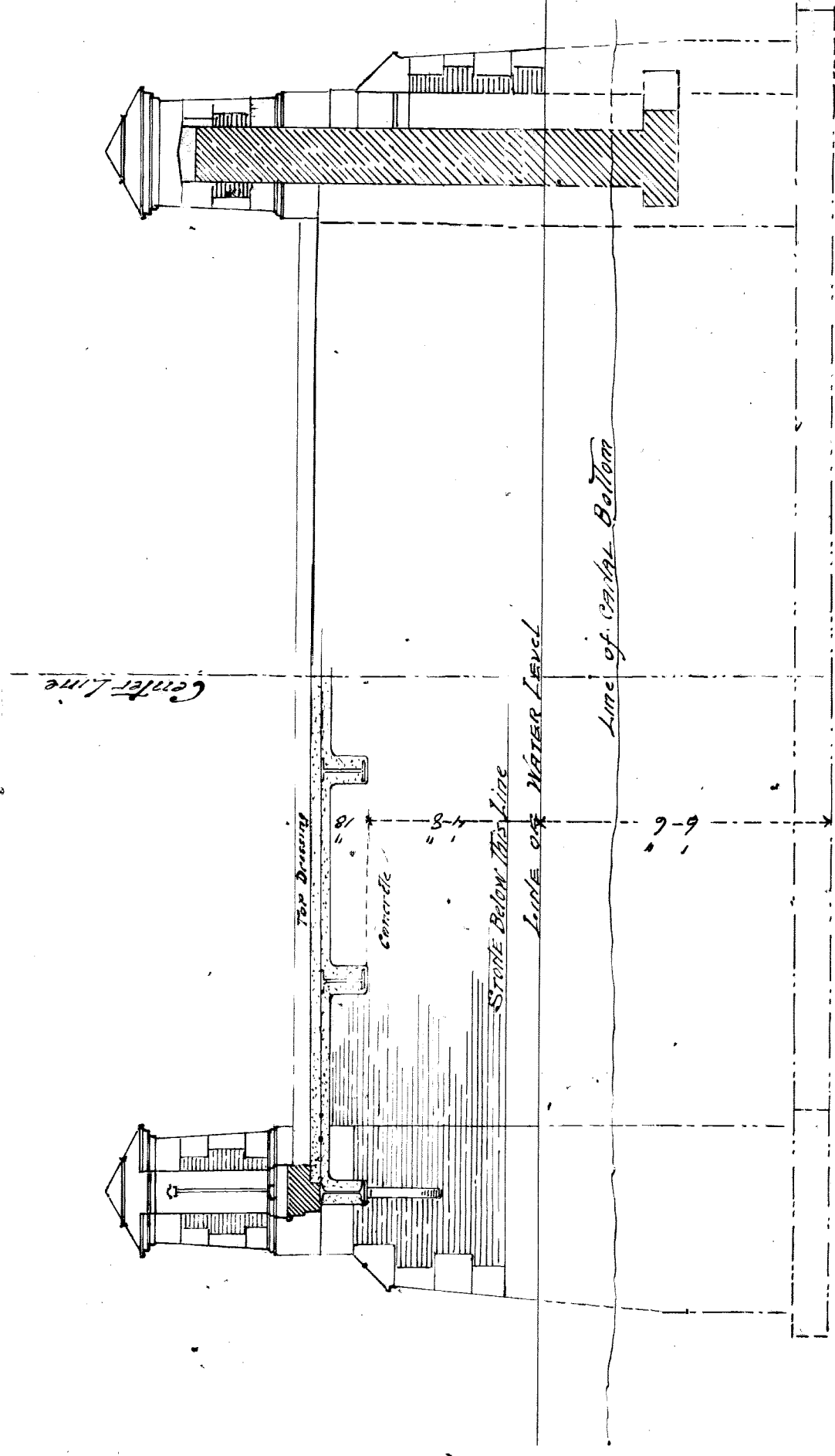


PLAN OF ROADWAY OF BRIDGE

SCALE 1/4" = 1 FT.



Detail of Section
SCALE 1/4" = 1-FOOT



TRANSVERSE SECTION
ON LINE A. B.

SCALE 1/4" = 1-FOOT

