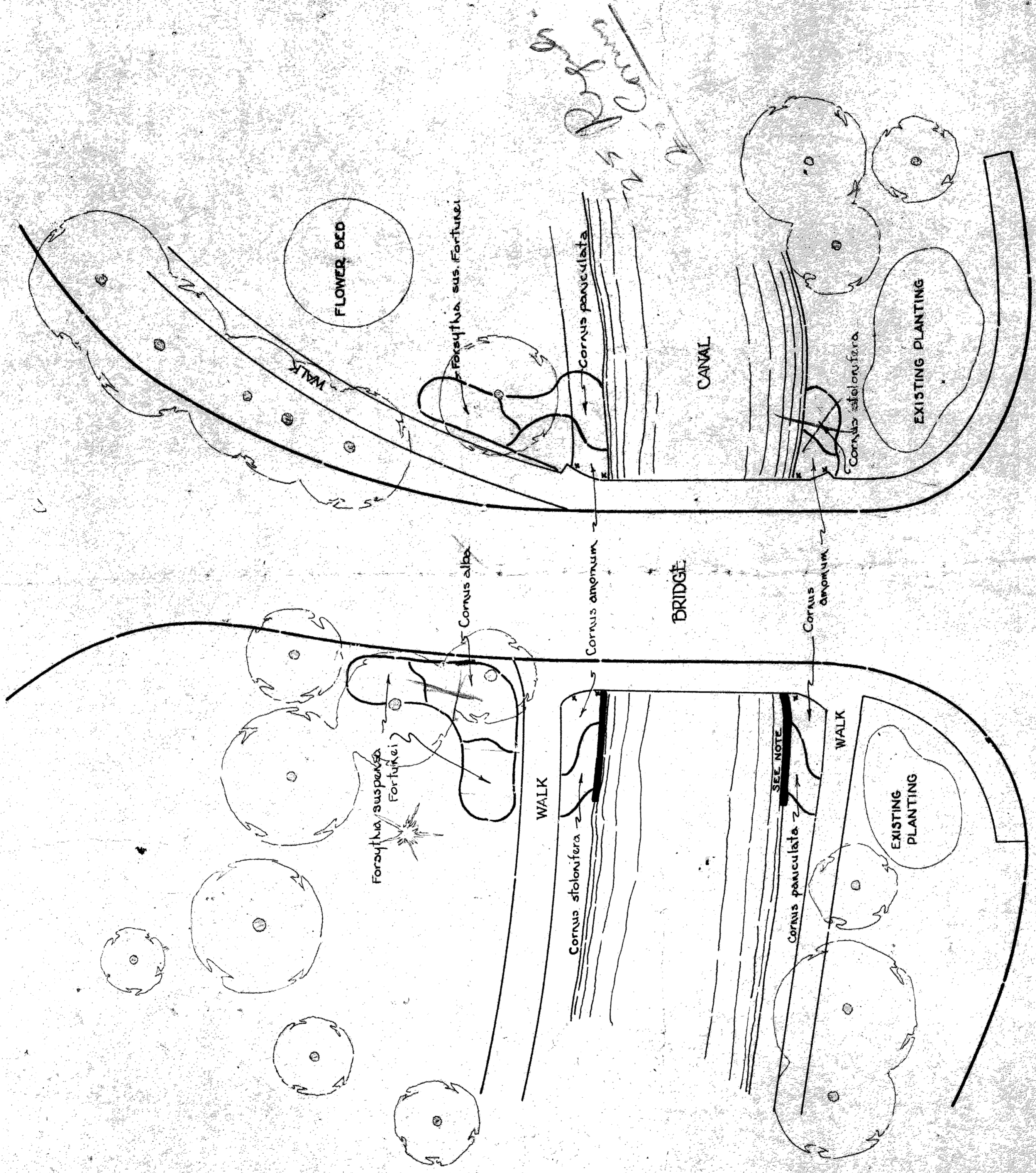


DEPT. OF PARKS & DIVISIONS  
 REPAIRS TO BRIDGE NO. 1  
 BELLE ISLE PARK.  
 WATSON COMM.  
 S. M. MURPHY ENG. SCALE 1/2" = 1'

BRIDGE #1

FRONT ELEVATION

REAR ELEVATION



# BELLE ISLE PARK

PLANTING PLAN AT BRIDGE No 1

DEPT OF PARKS & BLYDS

JUNE 25, 1928

SCALE-1 INCH=20 FEET.

NOTE: BANK SHOULD BE RAISED APPROX 2 FEET ABOVE WATER LEVEL, REINFORCED WITH WALL OF STONE AND BROKEN CONCRETE. FILL IN WITH GOOD SOIL.

x Celastrous Scudder

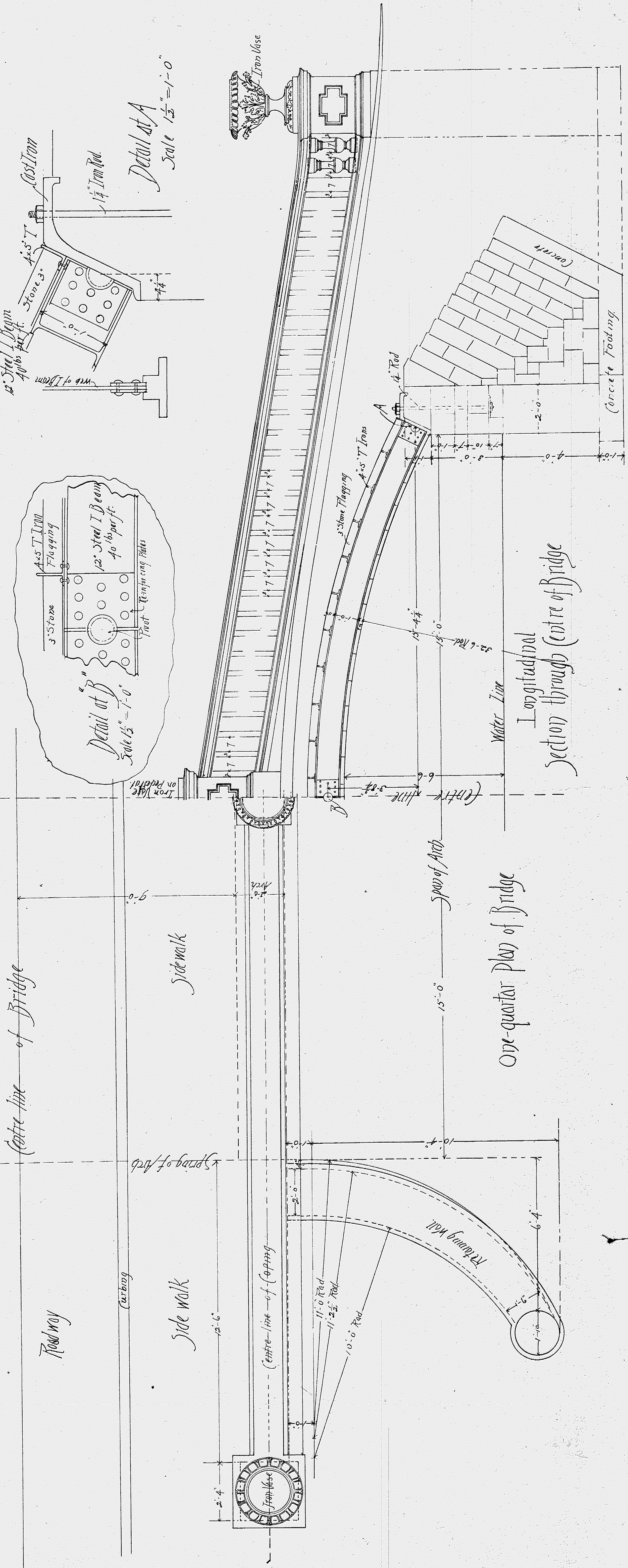
DRW 4  
Fol 4

# Bridge B

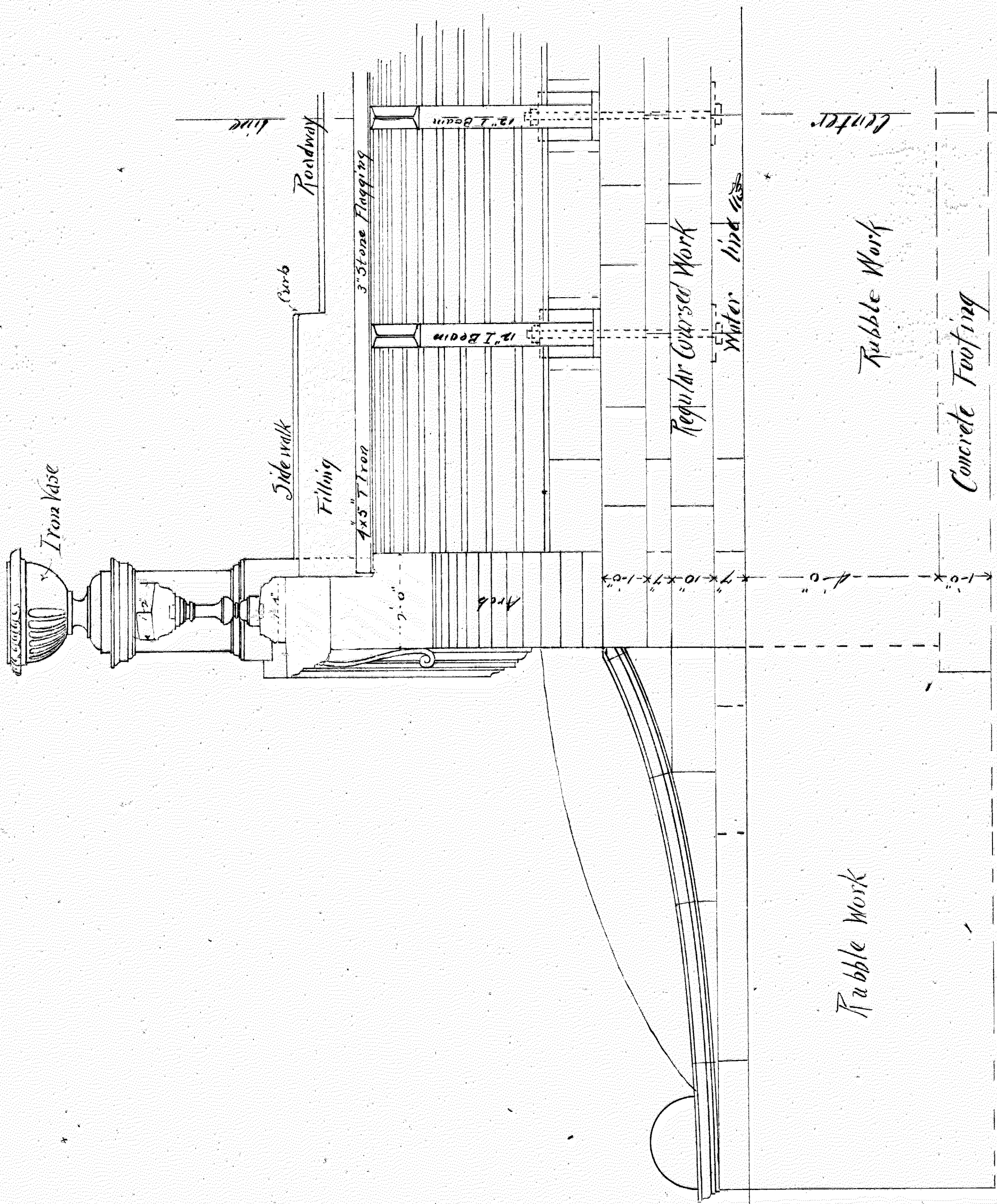
Working Drawings for  
 Stone Bridge to be erected over  
 Canal to Bath House at  
 Belle Isle Park.

Martiner L. Smith & Jap.  
 Architects  
 DETROIT MICH.

Scale  $\frac{1}{2}'' = 1'-0''$

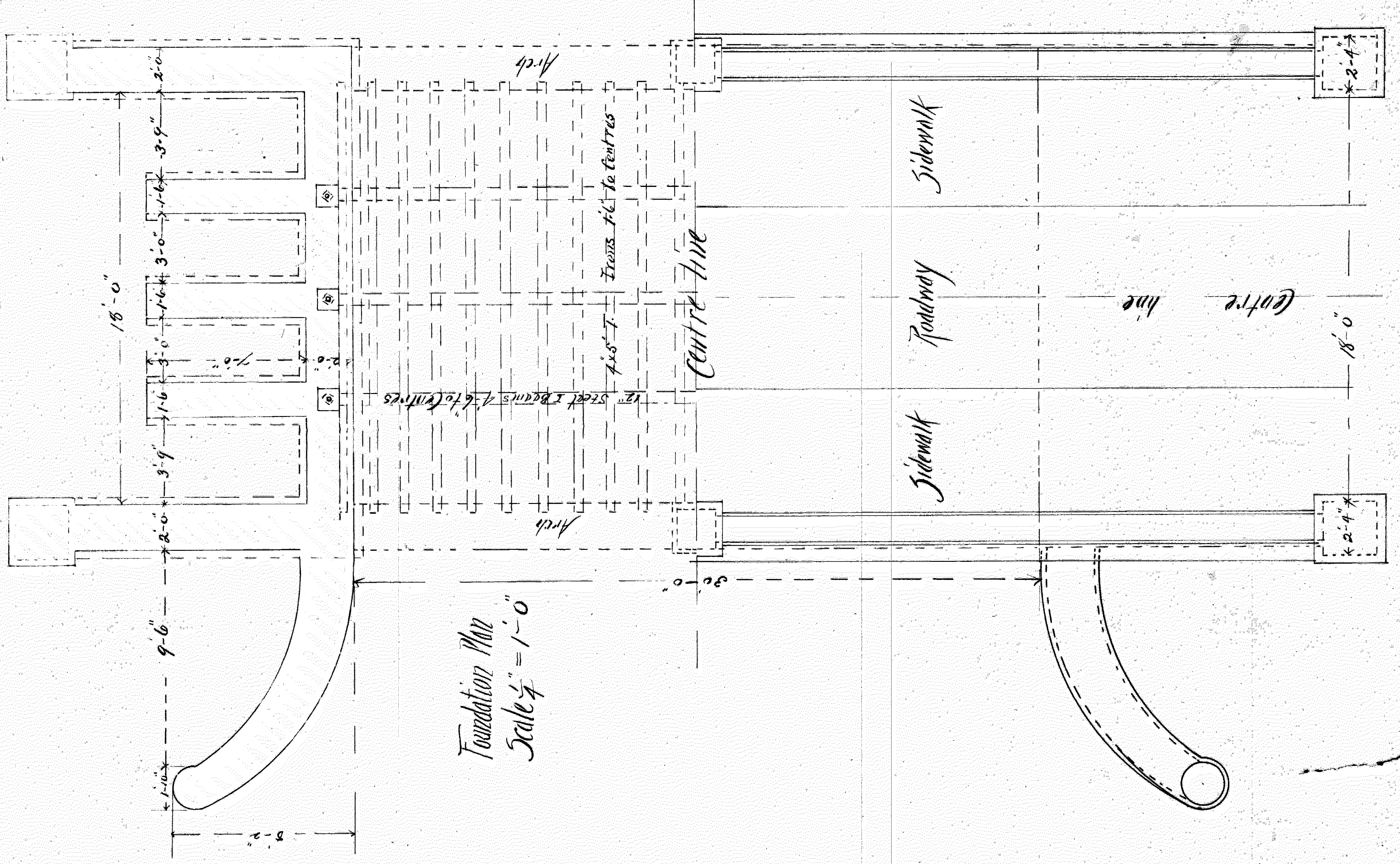


# Bridge B



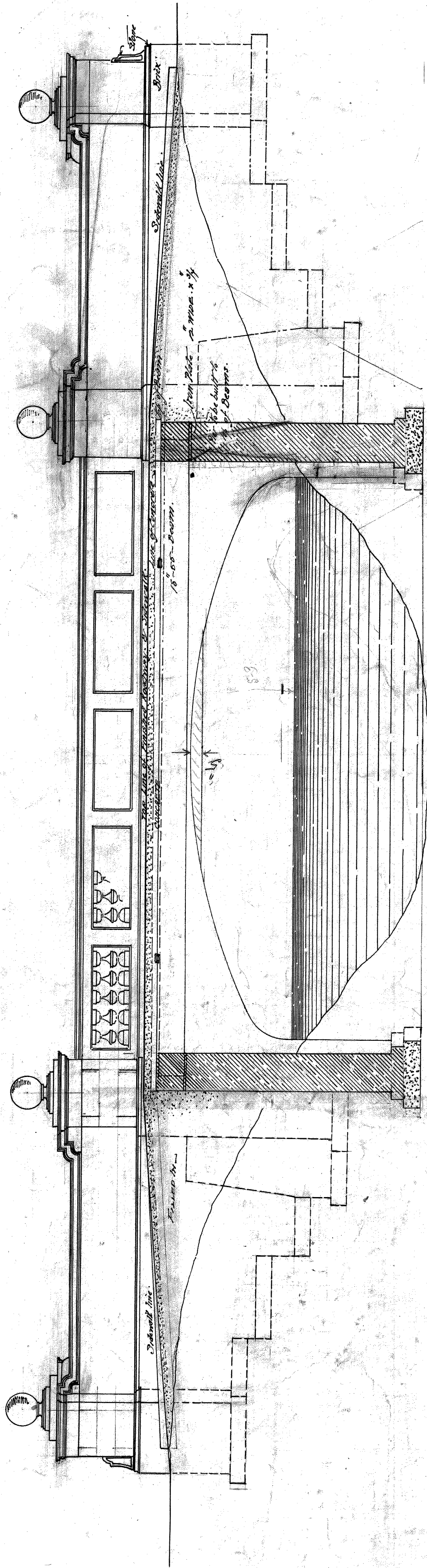
Transverse Section thro. A-B. Scale  $\frac{1}{2}'' = 1'-0''$

Mortimer L. Smith & Son  
Architects.



Foundation Plan  
Scale  $\frac{1}{4}'' = 1'-0''$

Plan of Bridge Scale  $\frac{1}{4}'' = 1'-0''$



Longitudinal Section  
 1/4" = 1'-0"

BRIDGE No. 10.

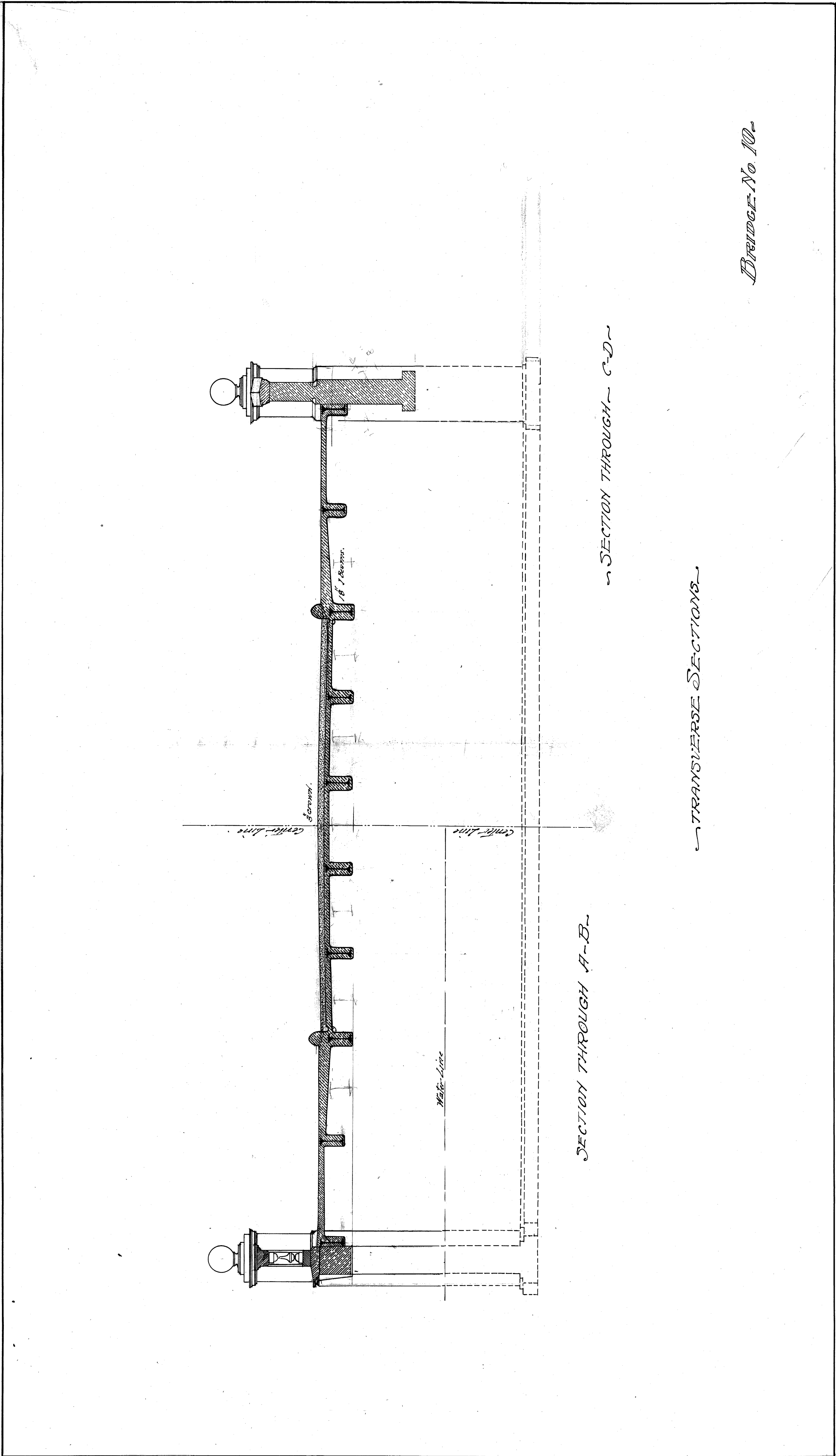
B.I. 25

FOLDER 31  
 DRAWER 4.

BW 10-1

6044

1911



SECTION THROUGH A-B

SECTION THROUGH C-D

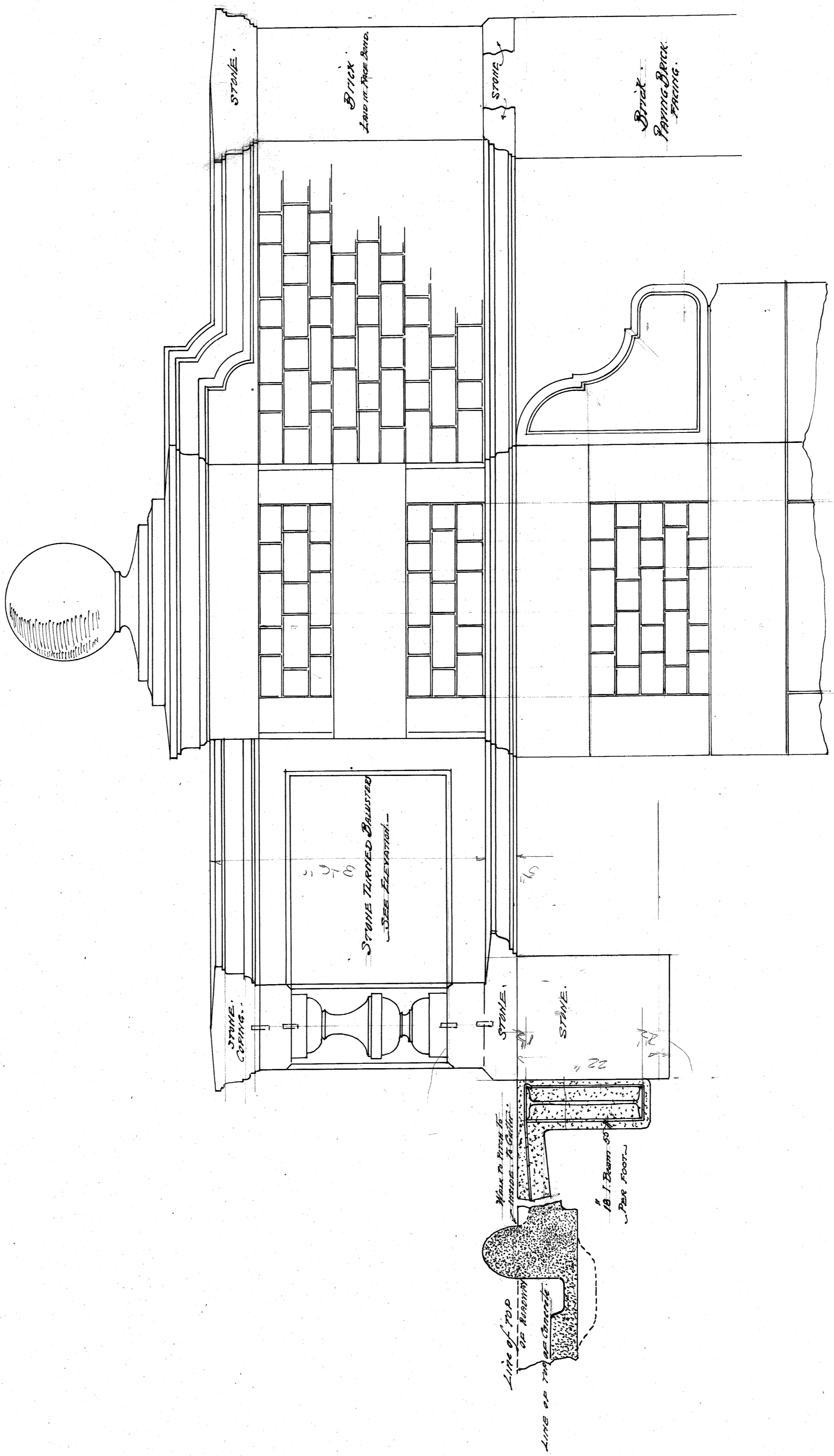
TRANSVERSE SECTIONS

BRIDGE No 10

DW 210.2

B.I. 26

Draw. A



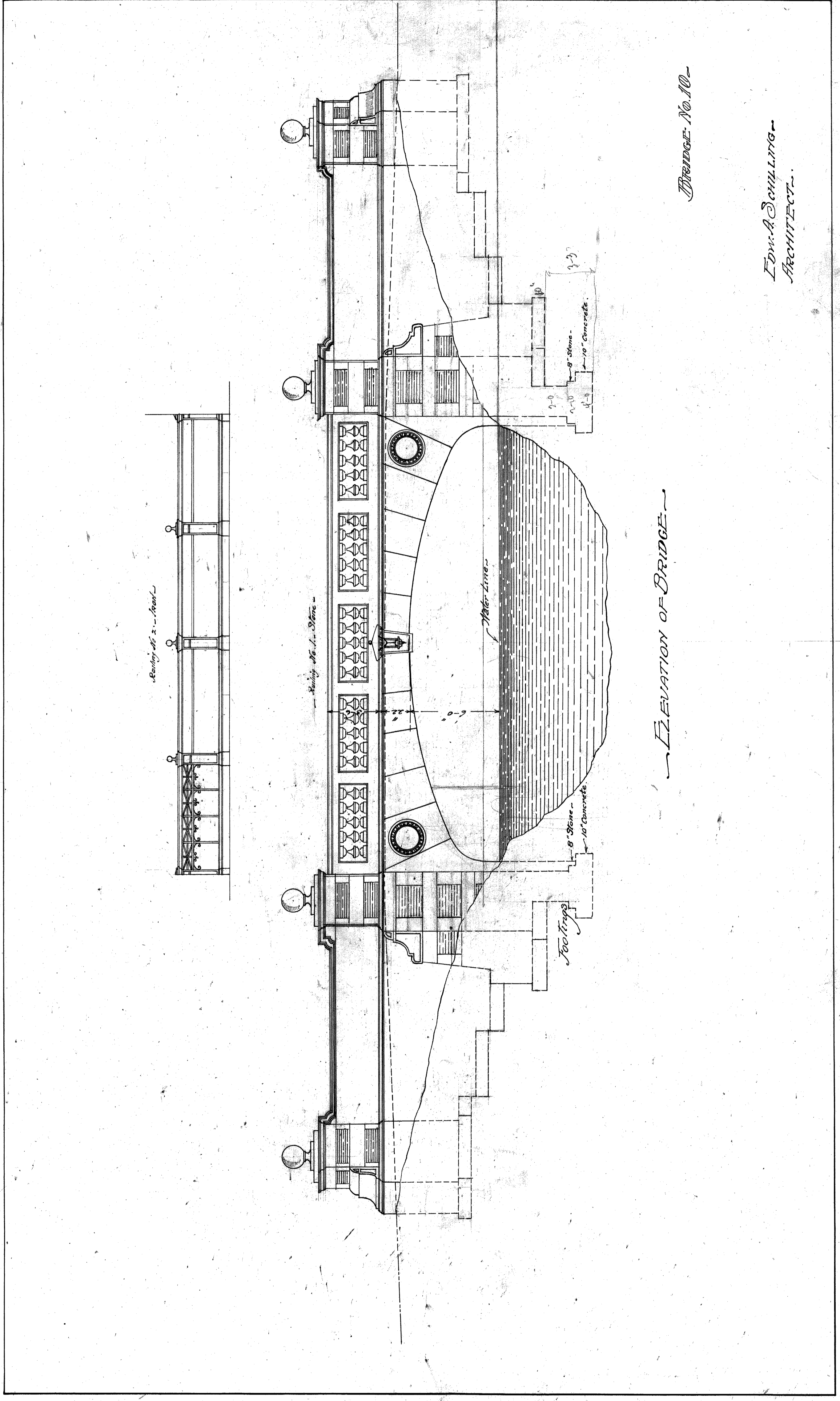
BRIDGE No. 100

1/4" INCH SCALE. DETAIL.

DW. 210.3  
 B.I. 27  
 Draw. 4

#22

4.8  
6.9  
2.1



ELEVATION OF BRIDGE

BRIDGE No. 10

Edw. A. Schulling  
ARCHITECT.

6-210-4

B.I. 28

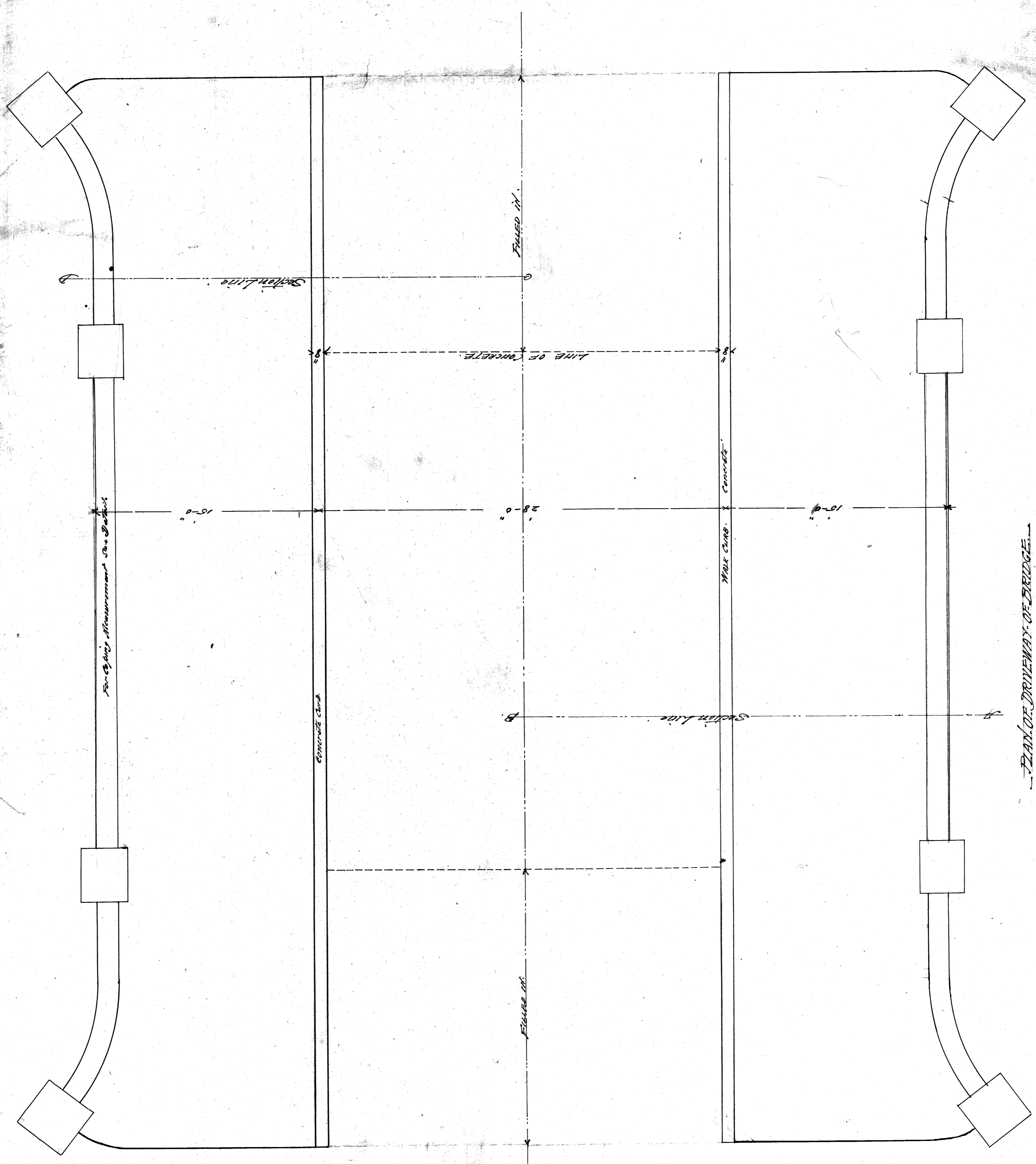
Draw. 4





DW-210-6  
BRIDGE No. 100

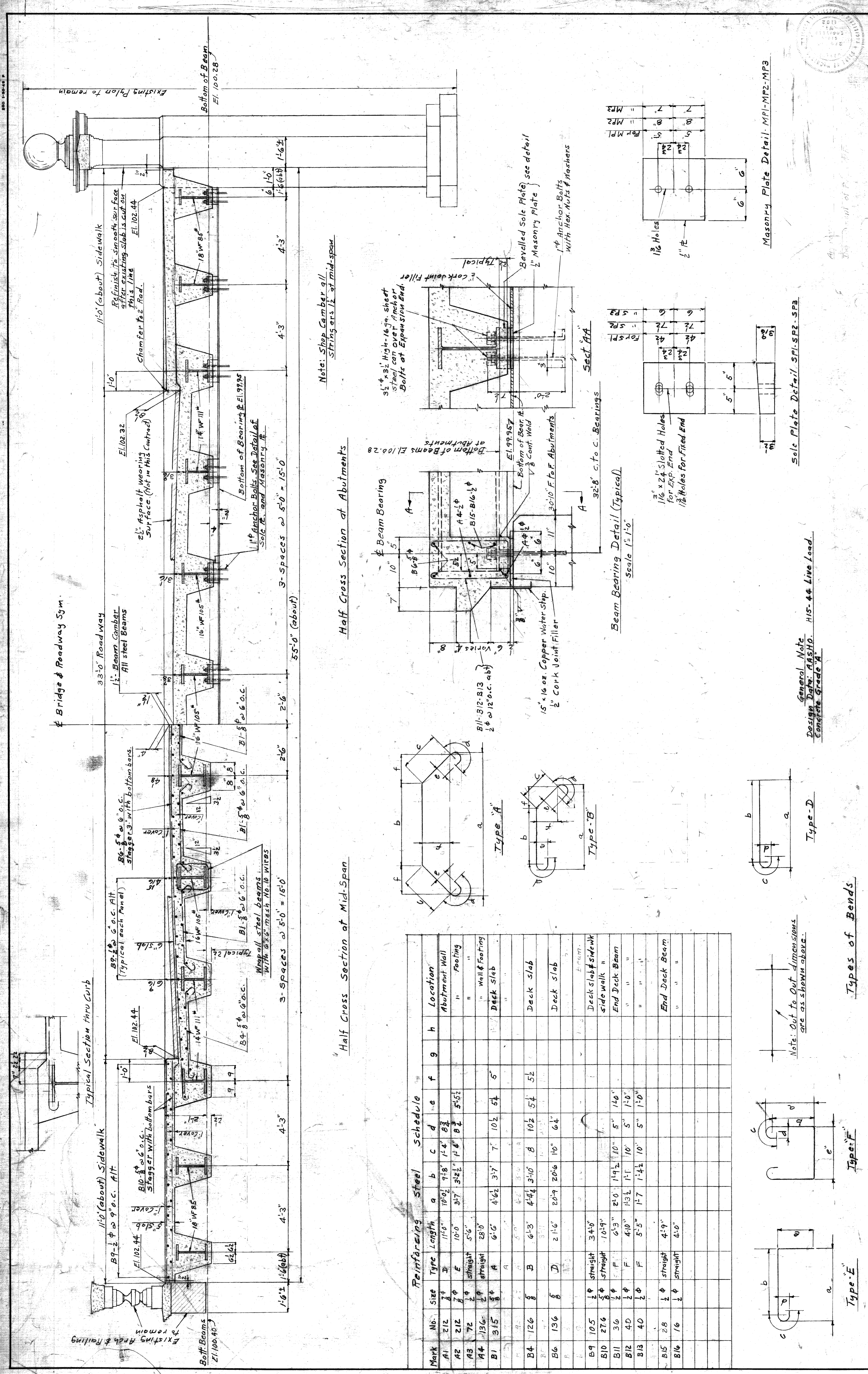
Draw. 4 B.I. 30



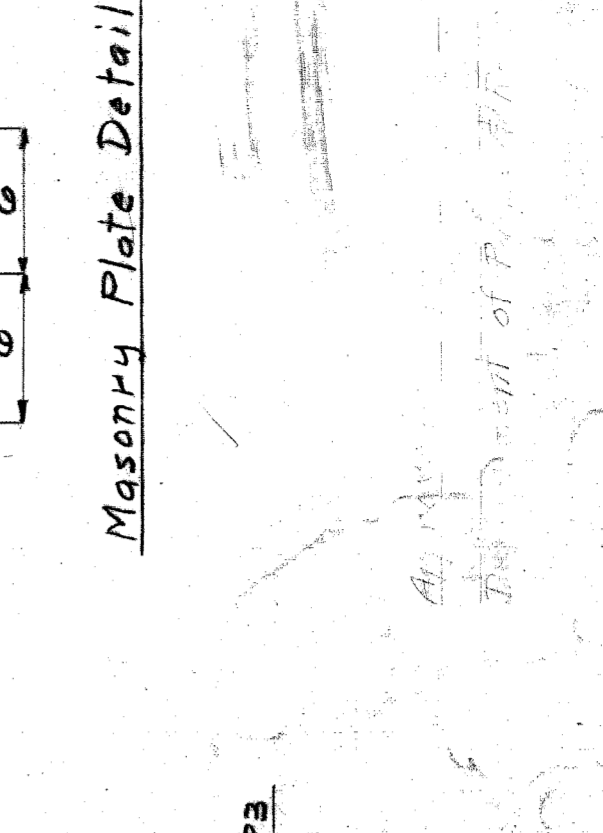
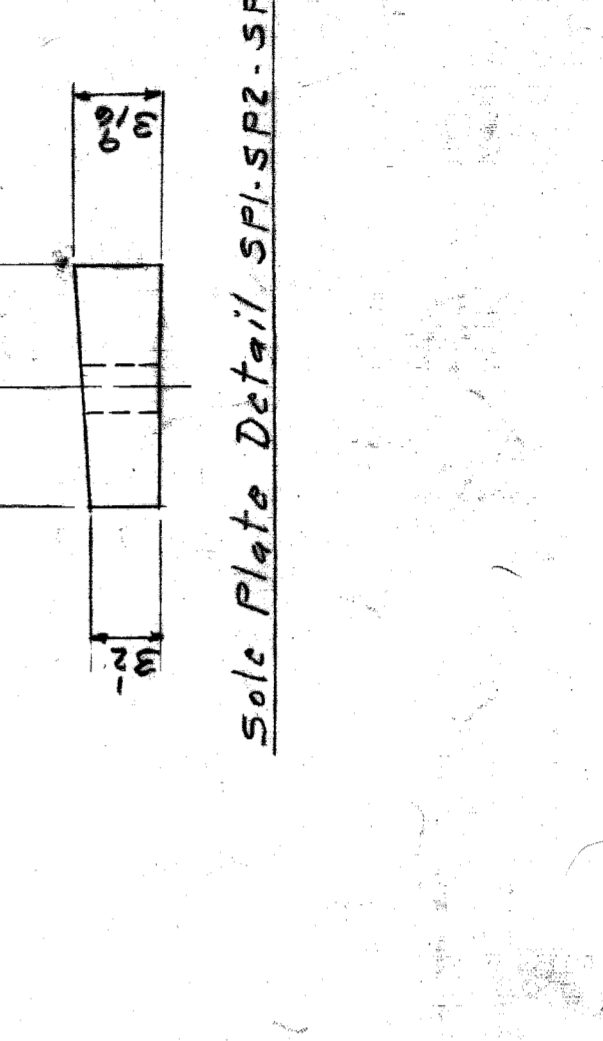
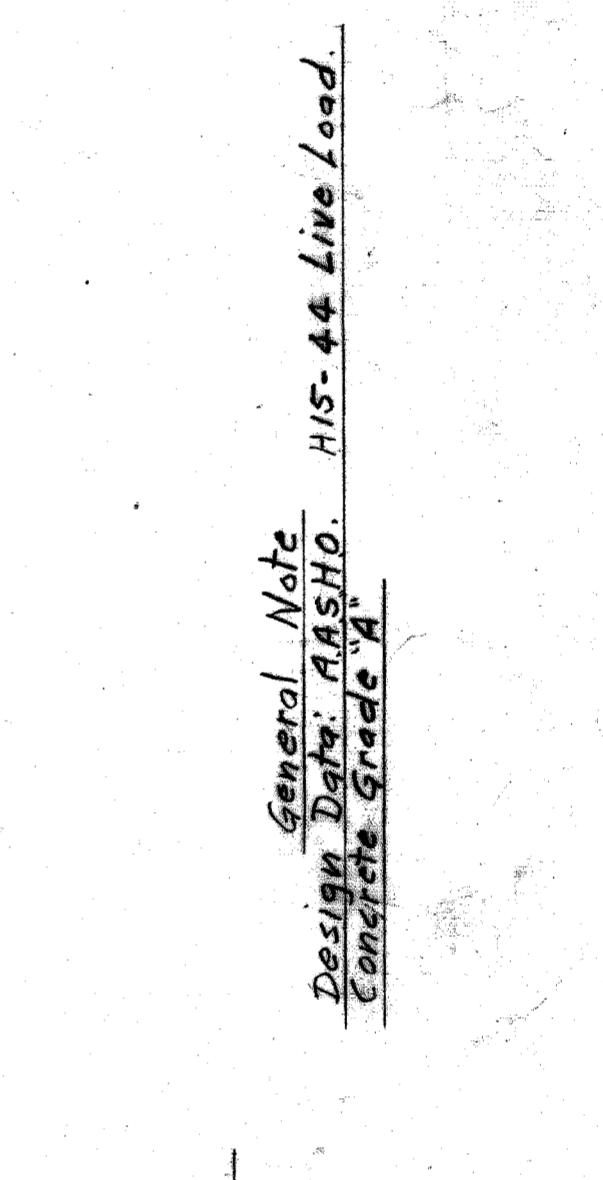
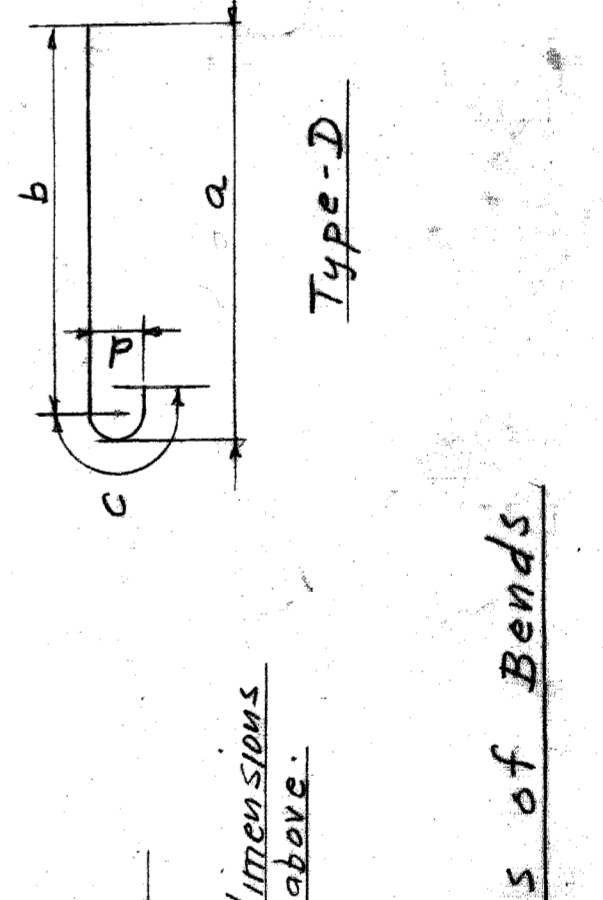
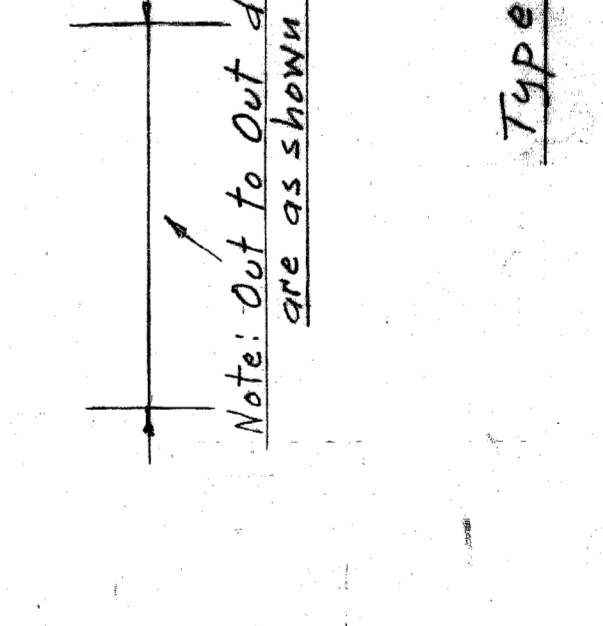
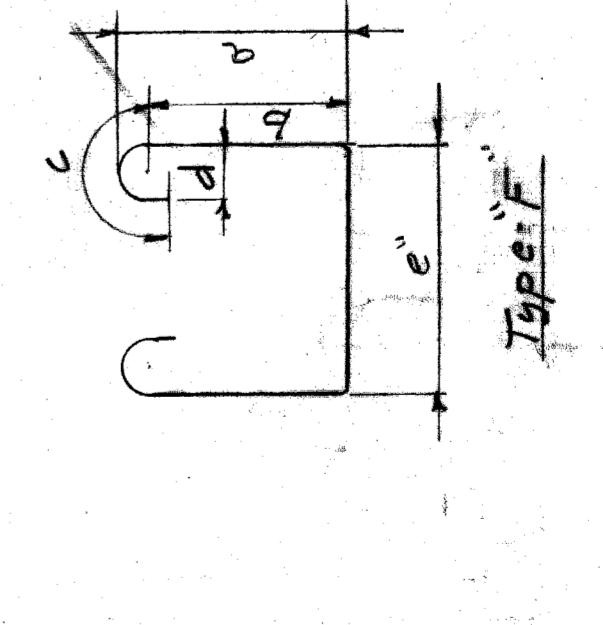
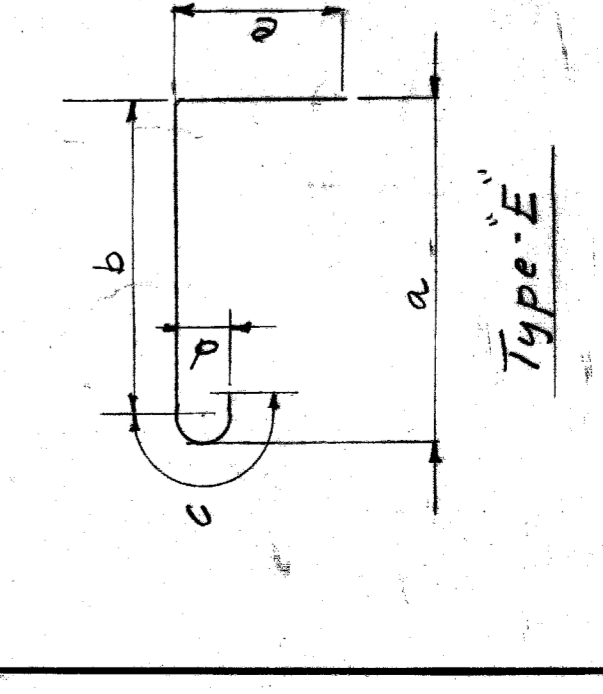




1-287 2-21-41  
 1-317 1-13-42  
 2-217 4/1/42  
 1-217 4/1/42  
 1-217 4/1/42  
 1-217 4/1/42



Mark	No.	Size	Type	Length	a	b	c	d	e	f	g	h	Location
A1	212	2 1/2"	D	11'-0"	10'-0"	9'-8"	1'-4"	B3					Abutment Wall
A2	212	2 1/2"	E	10'-0"	3'-7"	3'-2 1/2"	1'-4"	B2	5'-5 1/2"				Footing
A3	72	2 1/2"	straight	5'-6"									"
A4	136	2 1/2"	straight	28'-0"									Wall & Footing
B1	315	5 1/8"	A	6'-6"	4'-6 1/2"	3'-7"	7"	10 1/2"	5 1/2"				Deck Slab
B2	126	5 1/8"	B	6'-3"	4'-4 1/4"	3'-10"	8"	10 1/2"	5 1/2"				Deck slab
B3	136	5 1/8"	D	2'-11 1/2"	2'-9"	2'-6 1/2"	1'-0"	6 1/2"					Deck slab
B4	105	1 1/2"	straight	3'-4 1/2"									Deck slab & sidewalk
B5	276	3 1/2"	straight	10'-9"									side walk "
B6	36	1 1/2"	F	6'-5"	2'-0"	1'-9 1/2"	1'-0"	5"	1'-0"				End Deck Beam
B7	40	1 1/2"	F	4'-0"	1'-3 1/2"	1'-1"	1'-0"	5"	1'-0"				"
B8	40	1 1/2"	F	5'-5"	1'-7"	1'-4 1/2"	1'-0"	5"	1'-0"				"
B9	28	1 1/2"	straight	4'-9"									End Deck Beam
B10	16	1 1/2"	straight	4'-0"									"



Half Cross Section at Mid-Span

Half Cross Section at Abutments

Note: Shop Camber all stringers 1/2" at mid-span

Note: Out to Out dimensions are as shown above.

Types of Bends

General Note  
 Design Data: AASHTO, HS-44 Live Load, Concrete Grade A

Sole Plate Detail SPl-SP2-SP3

Beam Bearing Detail (Typical)  
 Scale 1" = 1'-0"

Masonry Plate Detail MPI-MP2-MP3

APPROVED:	<i>J. L. Britton</i>	DESIGNED BY:	<i>R. H. Spack</i>
STRUCT. ENGINEER		DRAWN BY:	<i>D. H. Spack</i>
ENGINEER OF DESIGN	<i>W. J. Wallace</i>	TRACED BY:	<i>R. H. Spack</i>
DESIGNED	<i>A. Colan</i>	CHECKED BY:	<i>A. Colan</i>

REVISIONS

NO.	DESCRIPTION	DATE

CITY OF DETROIT  
 DEPARTMENT OF PUBLIC WORKS  
 CITY ENGINEERS OFFICE  
 BUREAU OF DESIGN

BELLE ISLE BRIDGES  
 RECONSTRUCTION OF BRIDGE NO. 10  
 FLOOR FRAME DETAILS

SHEET 2 OF 2 SHEETS  
 JOB NO. PW-77  
 DRAWG NO. S-2  
 DATE MAY 1946

BOOK NO. 1430  
 PAGE 5-16-7  
 SCALE 1/2" = 1'-0" EXCEPT NOTED  
 DRAW #4  
 AP-69