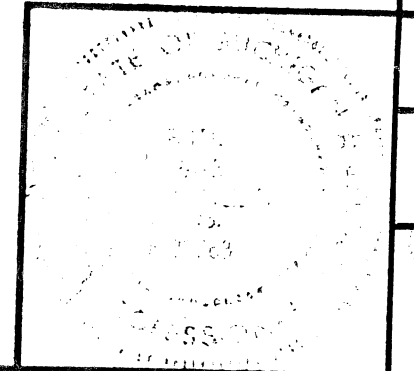


- General Notes:**
- The design of this structure is based on current AASHTO Standard Specifications for Highway Bridges, HS-20 Loading.
 - Except where otherwise indicated on these structure sheets or in the proposal and supplemental specifications contained herein, all materials and workmanship for the bridge shall be in accordance with the Michigan Department of Transportation Standard Specifications for construction (1984 Edition). Roadways, curbs, sidewalks and site restoration shall conform to City of Detroit standards.
 - Live Load plus impact deflection does not exceed 1/1000 of the span length.
 - The Load Factor Method of design was used for this structure.
 - The superstructure is designed to allow for a future wearing surface dead load of 25 p.s.f. on the roadway surface.
 - The design of the structural members is based on material of the following grades and stresses:
Concrete: Grade 45D ————— $f'_c = 4,000$ p.s.i.
Steel Reinforcement ————— $f_y = 60,000$ p.s.i.

BW-20 Picnic Way over Canal



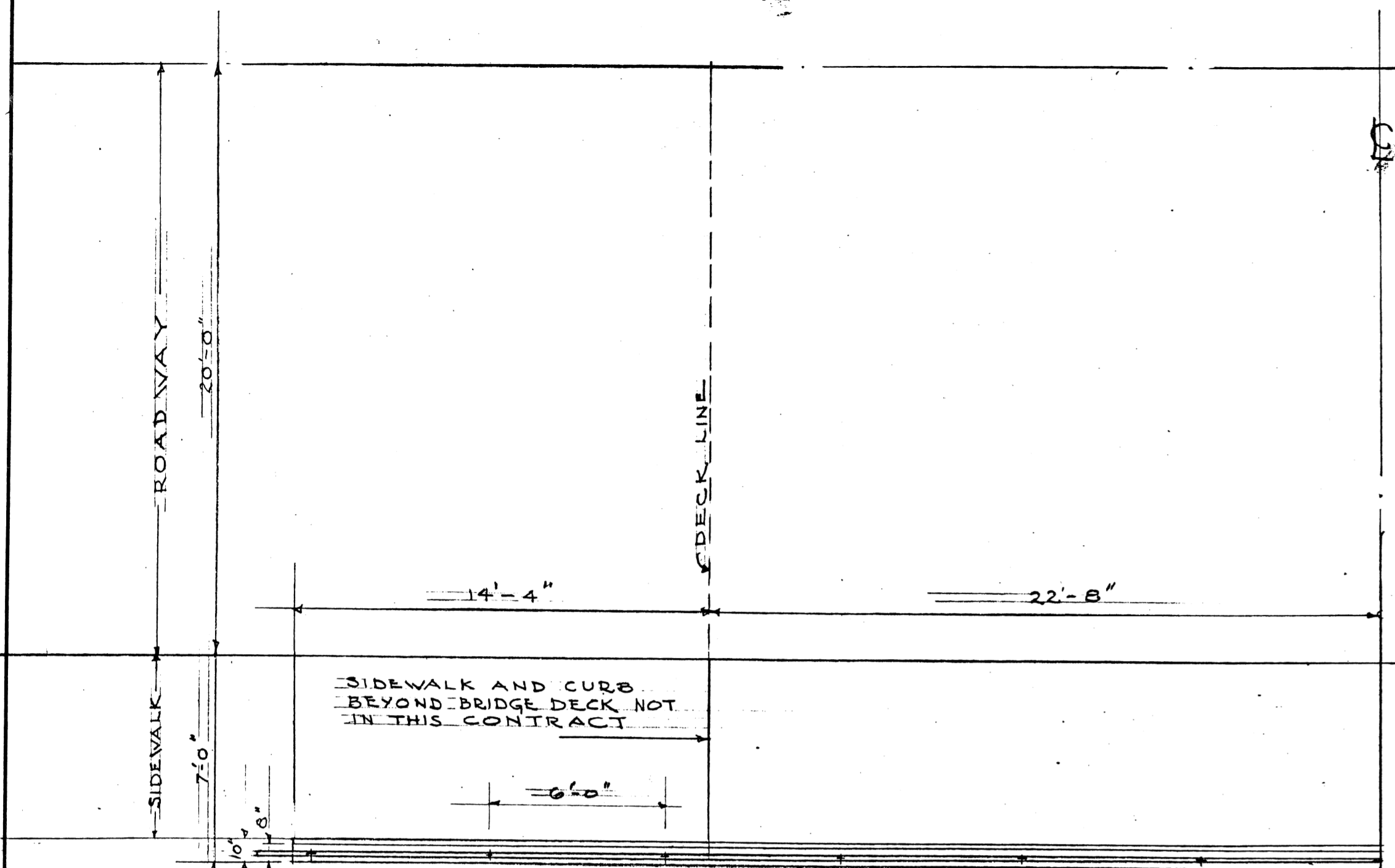
Project: CITY OF DETROIT
 Picnic Way Bridge Reconstruction
 Sheet Title: GENERAL PLAN OF STRUCTURE
 Project No.: 8205
 Sheet No.: S-1

MADISON MADSON
 INTERNATIONAL OF MICHIGAN
 Engineers, Architects, Planners
 615 Griswold
 Detroit, Michigan 48226

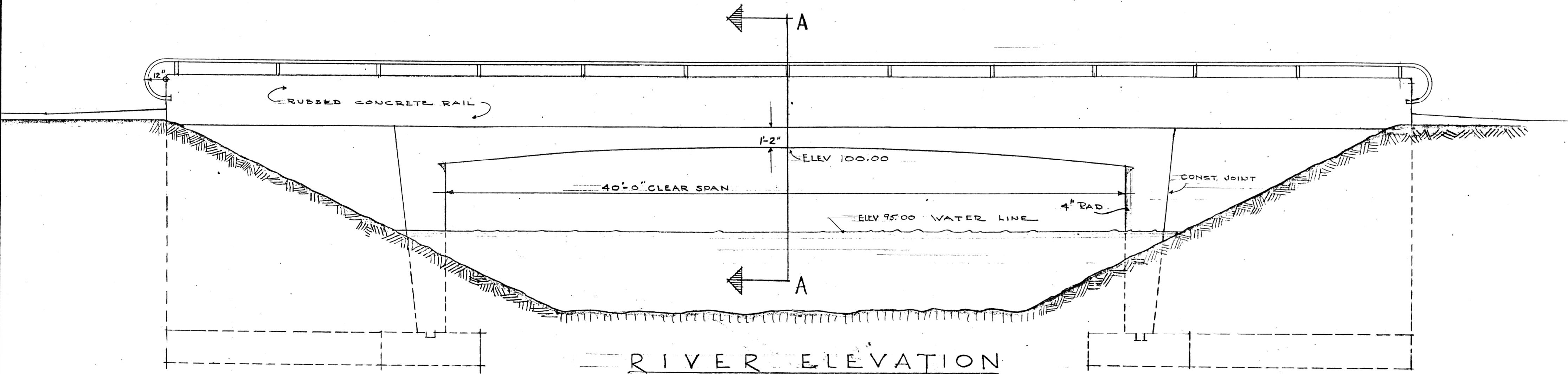
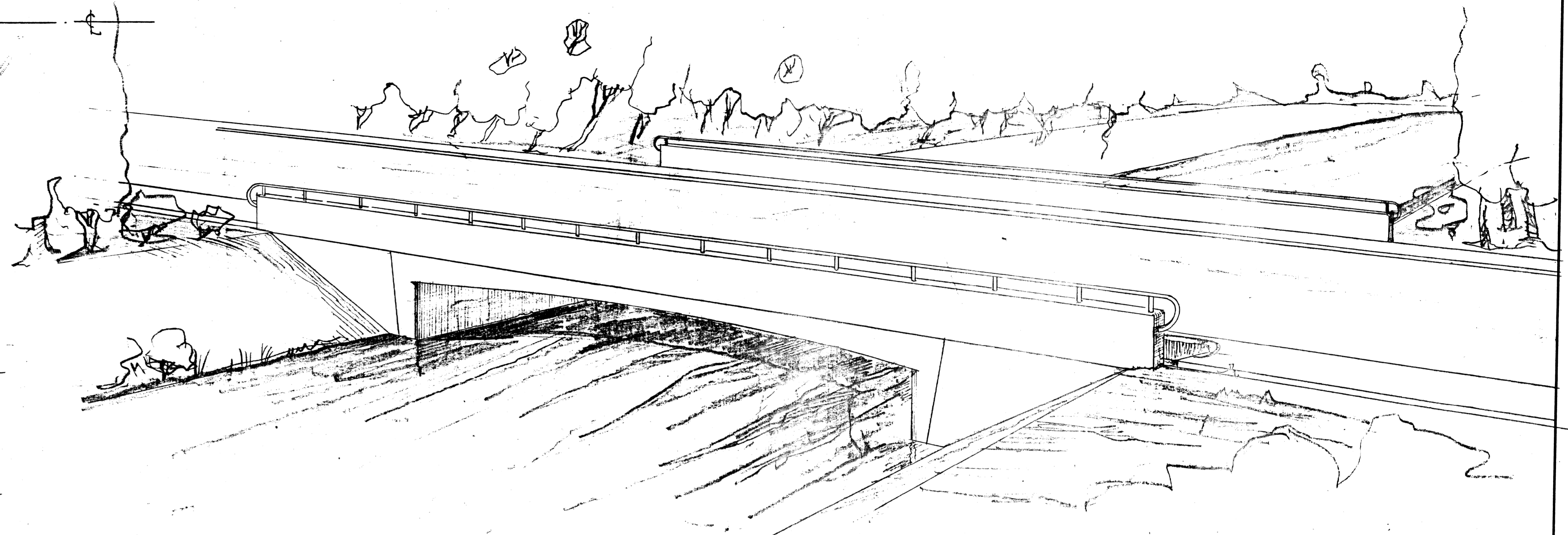
DESIGN BY K.C.H./S.O.
 DRAWN BY K.C.H.
 CHECKED BY K.C.H./S.O.
 DATE
 PROJECT NO. 8205
 SHEET NO. S-1

BW 210

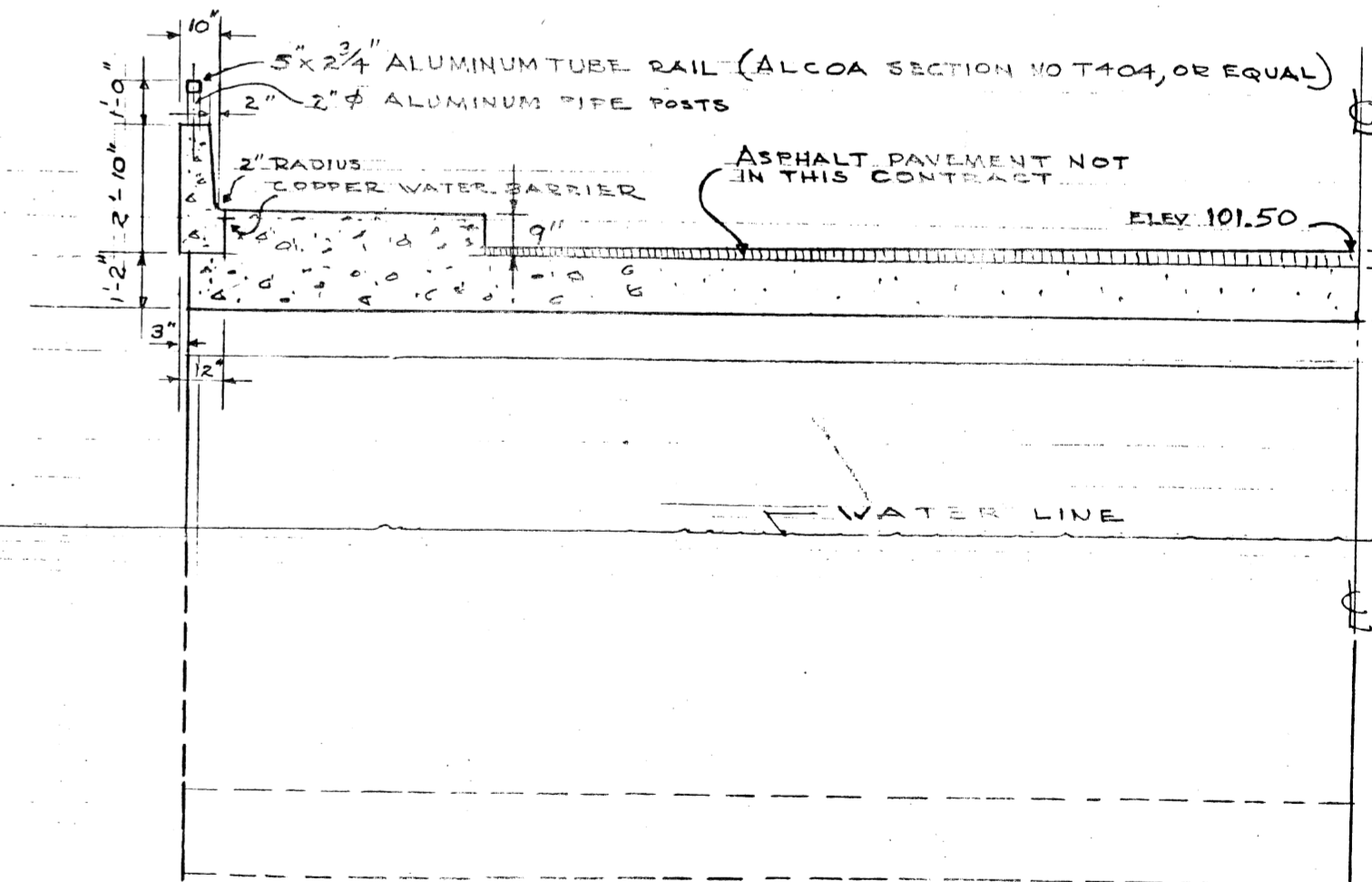
BP 4/1/46
 3.P. 4/25/46
 3.P. 8-2-46
 B.P. 7-11-47



QUARTER PLAN
 SCALE 1/4" = 1'-0"



RIVER ELEVATION
 SCALE 1/4" = 1'-0"



HALF CROSS SECTION
 A-A
 SCALE 1/4" = 1'-0"

DESIGNED BY	Oakie & Johnson	APPROVED:	R.G. Johnson
DRAWN BY	Oakie & Johnson	SR. ASSOC. REGR. ENGINEER	M. Thompson
TRACED BY	Oakie & Johnson	ENGINEER OF PUBLIC STRUCTURES	G.B. Johnson
CHECKED BY	R.B.J.	CITY ENGINEER	

CITY OF DETROIT
 DEPARTMENT OF PUBLIC WORKS
 CITY ENGINEERS OFFICE
 BY
 ADVANCE PLAN DIVISION

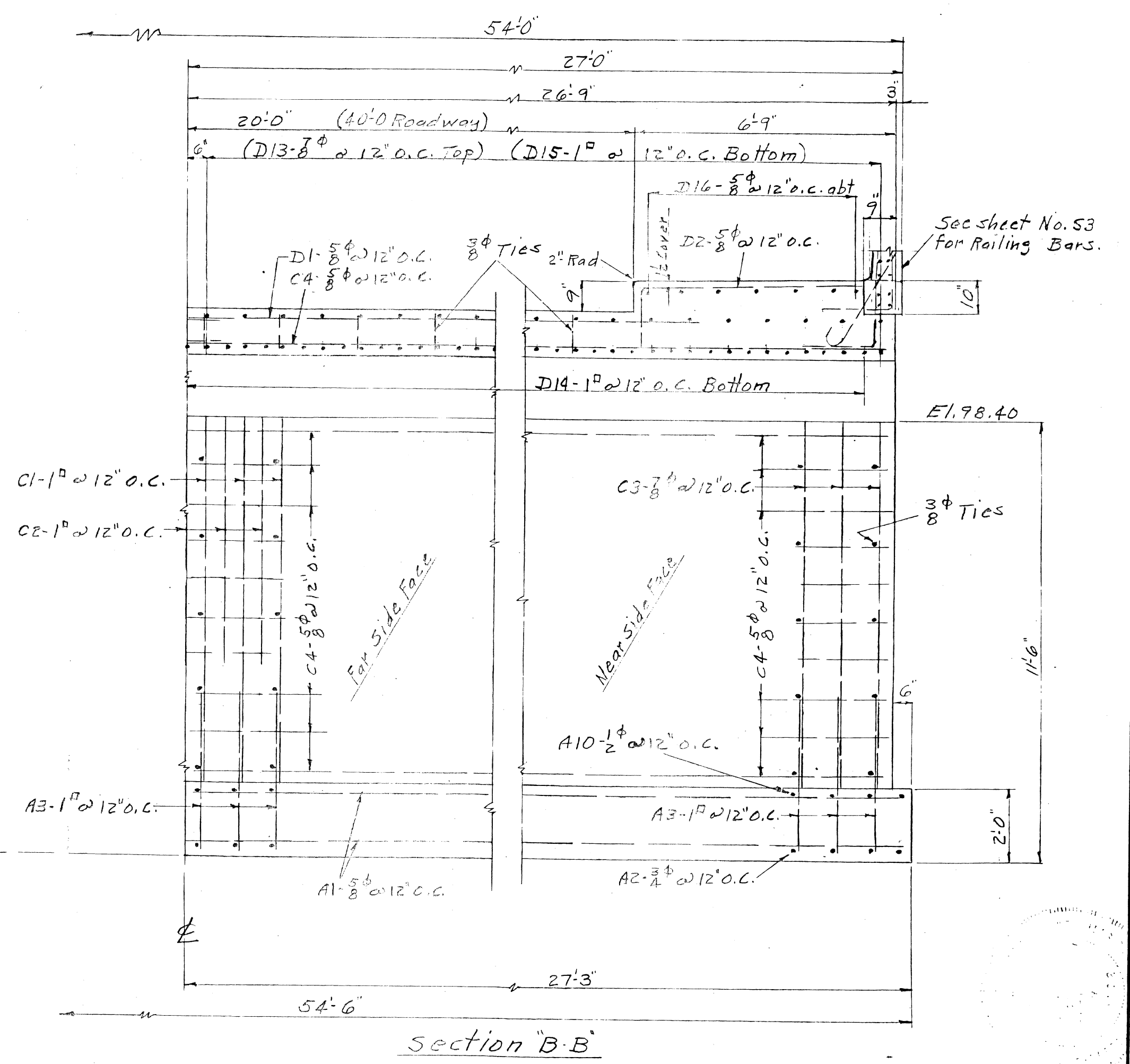
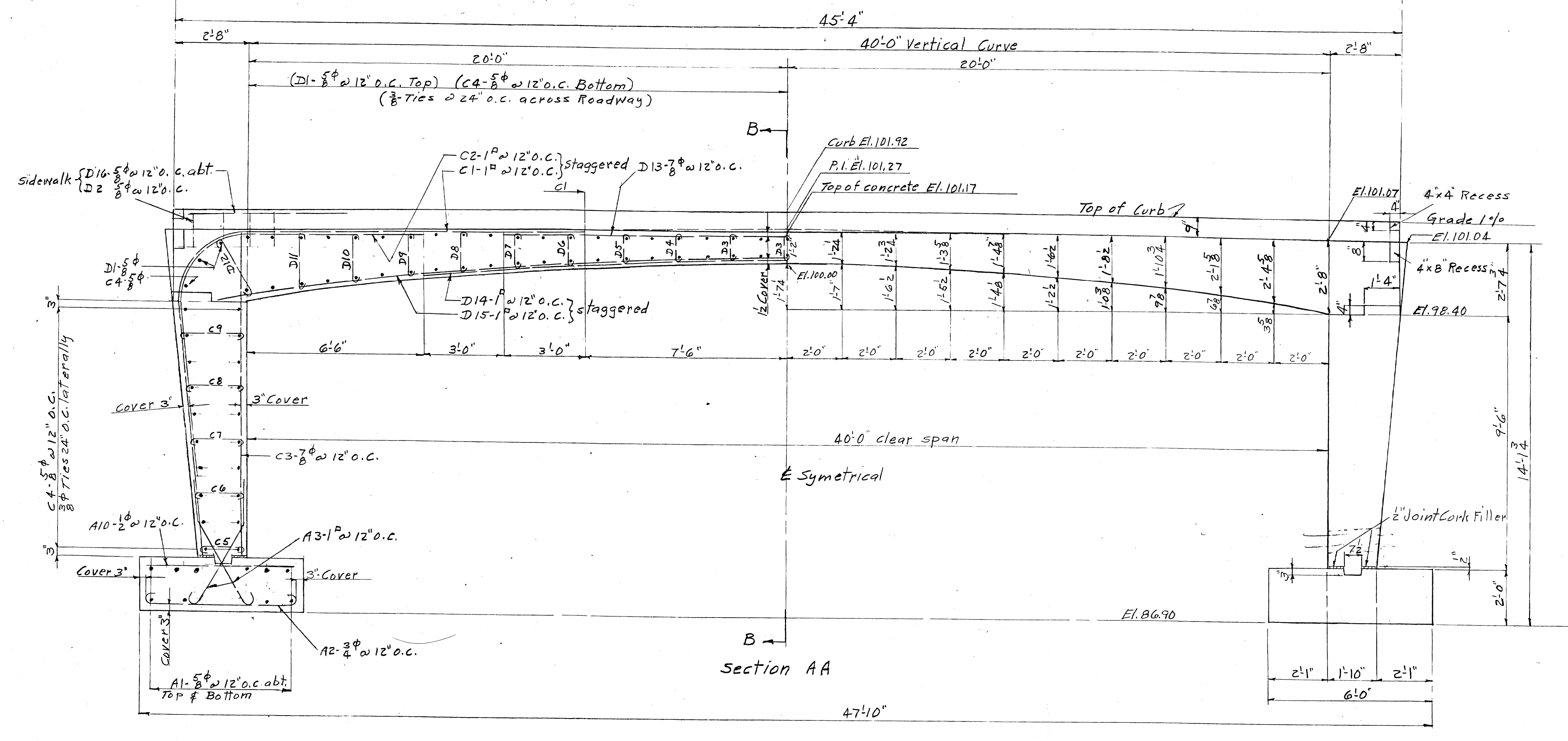
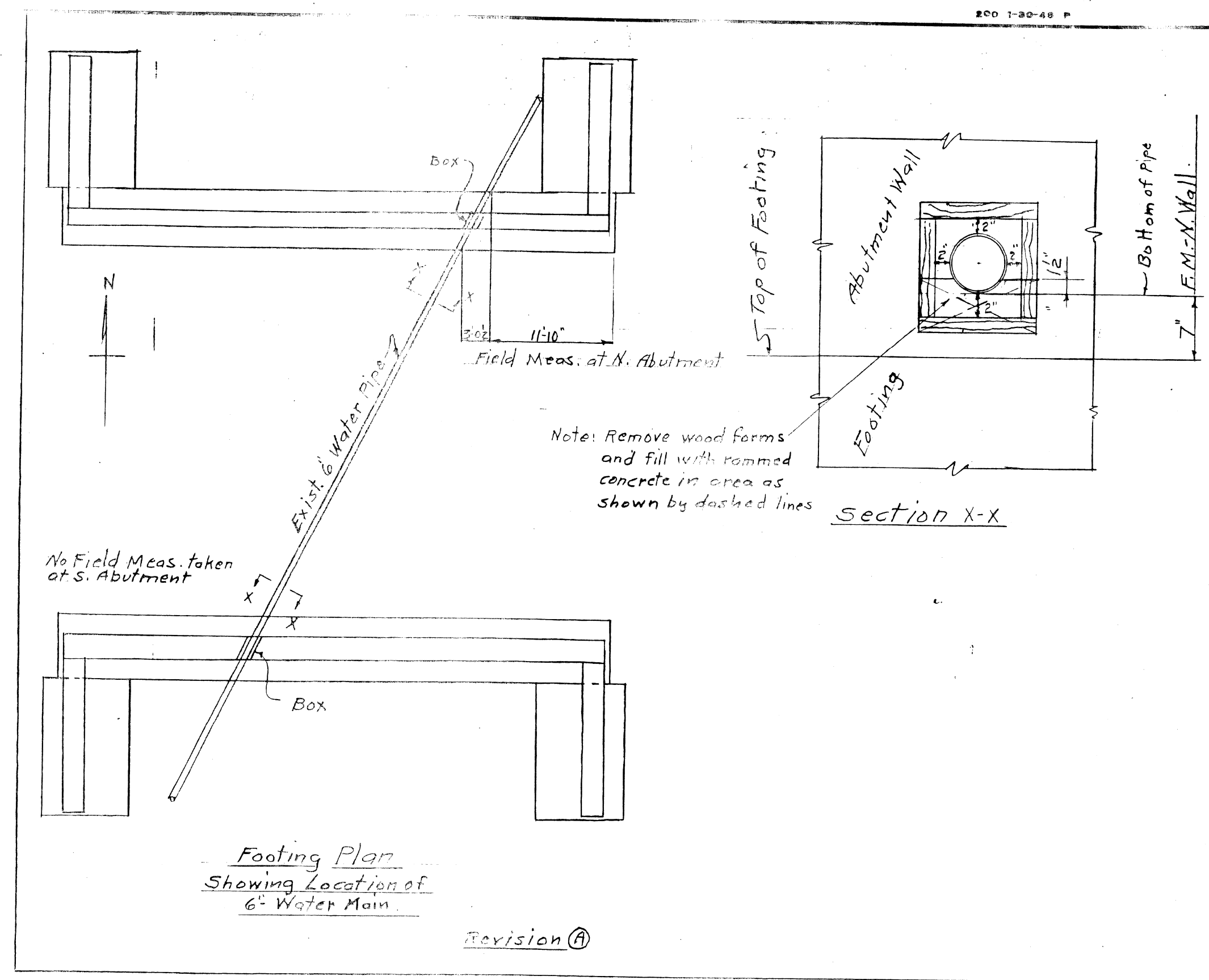
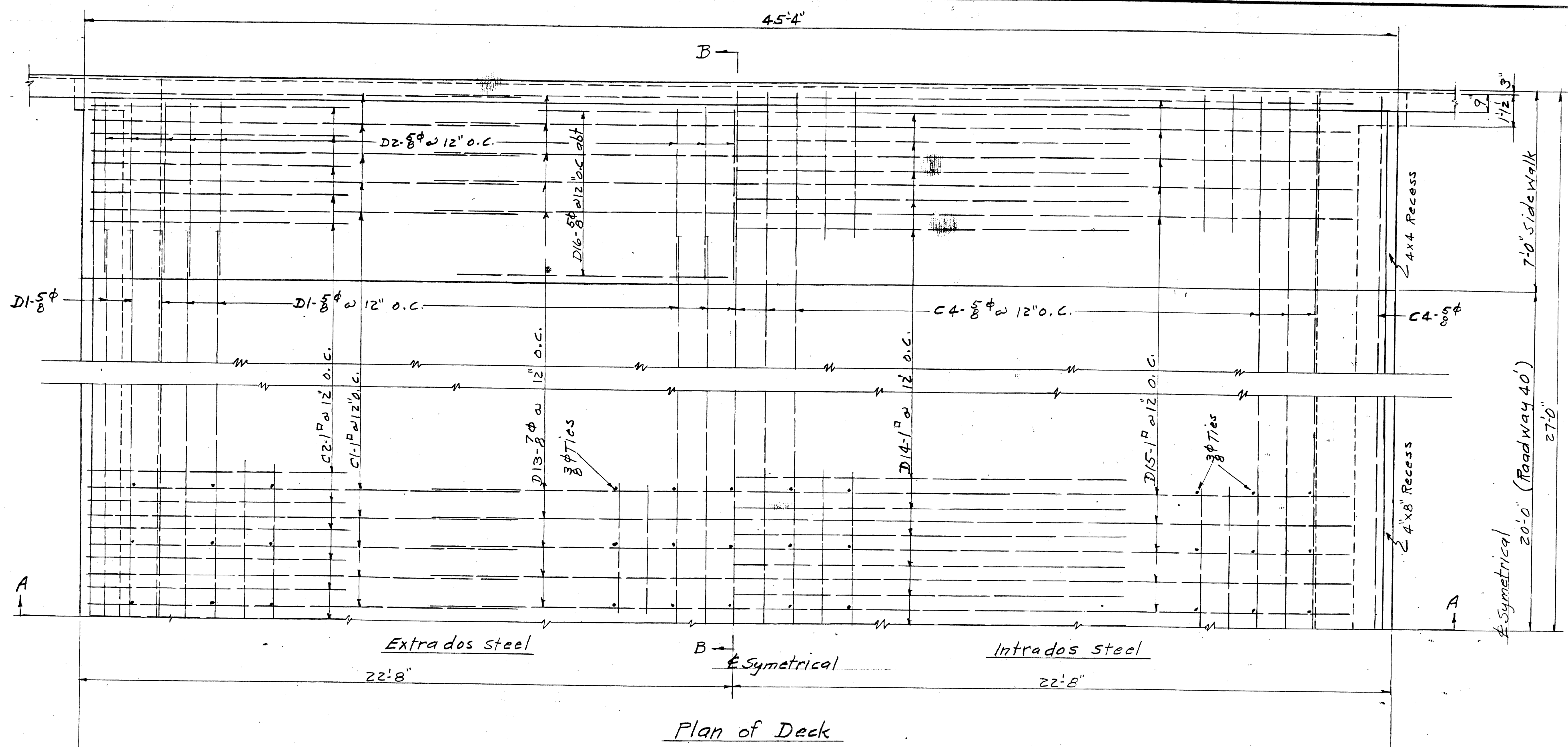
BW-202 - Casino Way Over Canal BW-202
 BELLE ISLE BRIDGES
 BRIDGE NO. 2.
 ARCHITECT LAYOUT

SHEET 1 OF 4 SHEETS
JOB No. FW-75
DRWG No. A-1
DATE MAY 1946

Draw 1 7-17-46-1 AP-60 1/21

3BP 4/1/46
 18P 4/1/46
 8 B.R. 8-2-46
 A.P.P. 7-11-47
 4-27-10-8-47

800 1-30-48 P



DESIGNED BY	R.H. Speck	APPROVED	J.L. Barton SR. ASSOC. STRUCT. ENGINEER
DRAWN BY	R.H. Speck	ENGINEER OF DESIGN	W. Wallace
TRACED BY	R.H. Speck	CHECKED BY	Martin R. Fisher ASS'TY CITY ENGINEER
NOTED BY			

CITY OF DETROIT
 DEPARTMENT OF PUBLIC WORKS
 CITY ENGINEERS OFFICE
 BUREAU OF DESIGN

BW 202 - Casino Way Over Canal
 BELLE ISLE BRIDGES
 BRIDGE NO. 2
 ARCH. TAILS

SHEET 2 OF 4 SHEETS
 JOB No. PW-75
 DRWG No. S-1 B.I.
 DATE MAY 1946

NO. 1574-5366

SCALE 3/8" = 1'-0"