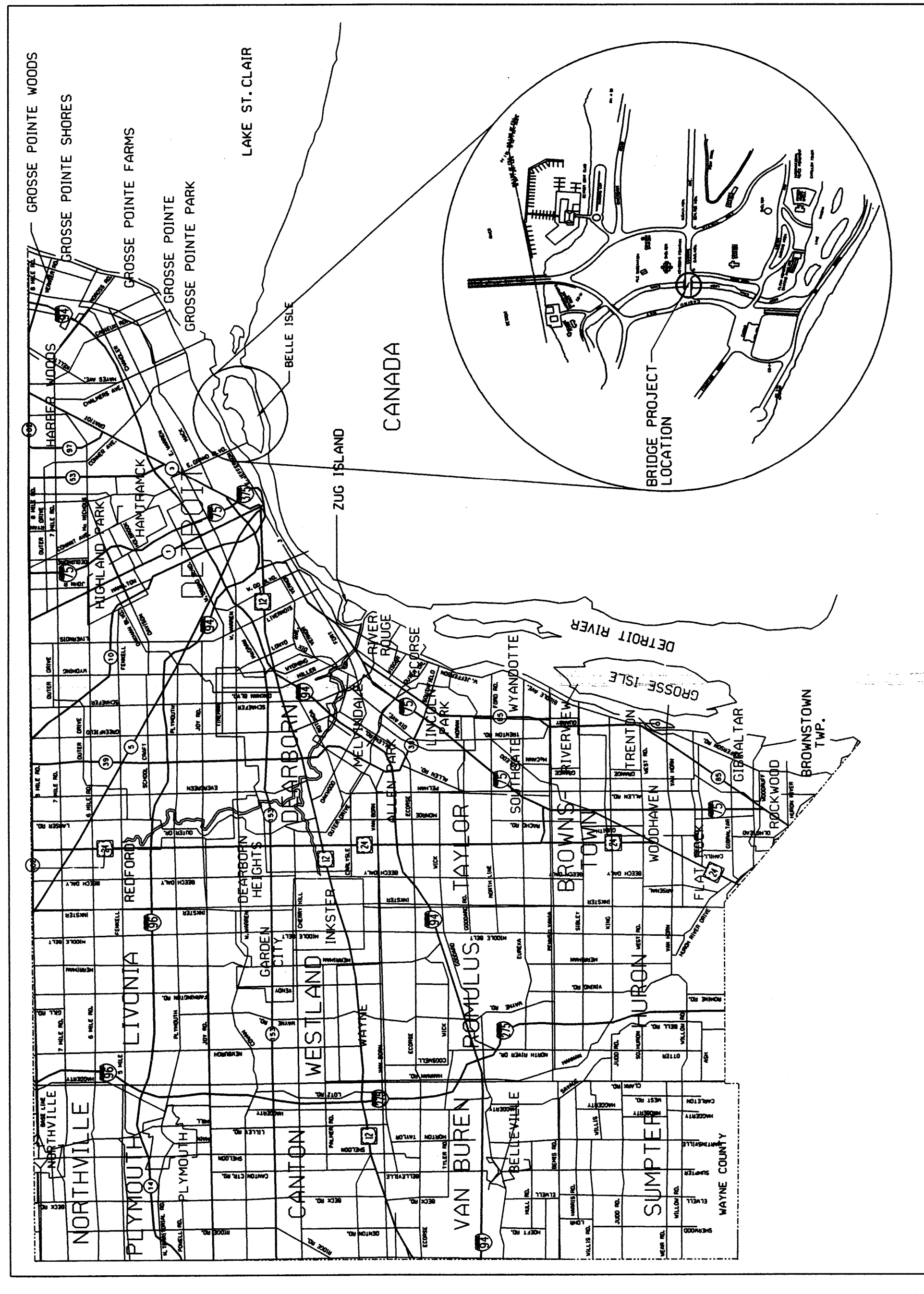


CITY OF DETROIT MICHIGAN

DEPARTMENT OF PUBLIC SERVICE

PLAN AND PROFILE OF PROPOSED BRIDGE REPLACEMENT PROJECT CITY OF DETROIT BRIDGE NO. BW 206, MDOT STRUCTURE NO. 12453 JOB NO. PARTS 1 & 2

REPLACEMENT OF THE CENTRAL AVENUE BRIDGE OVER LOOP CANAL



THE DESIGN OF THIS STRUCTURE IS BASED ON CURRENT AASHTO STANDARD SPECIFICATIONS FOR HIGHWAY BRIDGES HS-20 LOADING. LIVE LOAD PLUS IMPACT DEFLECTION DOES NOT EXCEED 1/1000 OF THE SPAN LENGTH. THE LOAD FACTOR METHOD OF DESIGN WAS USED FOR THIS STRUCTURE.

EXCEPT WHERE OTHERWISE INDICATED ON THESE PLANS THE PROPOSAL AND SUPPLEMENTAL SPECIFICATIONS CONTAINED HEREIN. ALL MATERIALS AND WORKMANSHIP SHALL BE IN ACCORDANCE WITH RECENT THE MICHIGAN DEPARTMENT OF TRANSPORTATION STANDARD SPECIFICATIONS FOR CONSTRUCTION 2003 EDITION.

THE STATIONING AS SHOWN ON THESE PLANS FOR THE INTERSECTION OF THE CENTERLINE OF BRIDGE AND ROADWAY CENTERLINE IS BELIEVED TO BE CORRECT. IT SHALL, HOWEVER, BE CHECKED AT THE TIME OF STARTING CONSTRUCTION, AND IF THE STATIONING SHOWN ON THE PLANS IS INCORRECT, IT SHALL BE REPORTED TO THE DESIGN OFFICE, AND THE STRUCTURE SHALL BE STAKED OUT USING THE ACTUAL INTERSECTION OF THE CENTERLINE AS THE CONTROL POINT. VERIFY ALL MEASUREMENTS/DIMENSIONS BEFORE START OF CONSTRUCTION.

ALL EXPOSED CONCRETE CORNERS SHOWN SQUARE ON THE PLANS SHALL BE BEVELED WITH 1/2" TRIANGULAR MOLDINGS EXCEPT AS OTHERWISE NOTED.

THE DESIGN OF THE STRUCTURAL MEMBERS IS BASED ON MATERIAL OF THE FOLLOWING GRADES AND STRESSES:

LIVE LOAD -METHOD OF DESIGN-8.02 A

CONCRETE: GRADE 35S, f'c = 3,000 PSI PRESTRESSED CONCRETE f'c = 5,000 PSI (SUPERSTRUCTURE) f'c = 4,000 PSI PRESTRESSED STRANDS f's = 270,000 PSI

STEEL REINFORCEMENT: f'y = 60,000 PSI PRESTRESSED BEAM STIRRUPS f'y = 40,000 PSI

ORIGINAL DESIGN IS PERFORMED BY SEG (SMELL ENVIRONMENTAL GROUP, INC IN 1999) IN THE METRIC SYSTEM. CITY OF DETROIT (CITY ENGINEERING DIVISION) CONVERTED THESE DESIGN DRAWINGS INTO THE ENGLISH SYSTEM. NO CHANGE WAS MADE IN THE DESIGN OF THIS PROJECT

ALL ELEVATIONS ARE BASED ON CITY OF DETROIT DATUM

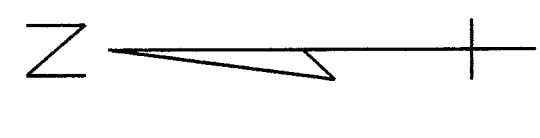
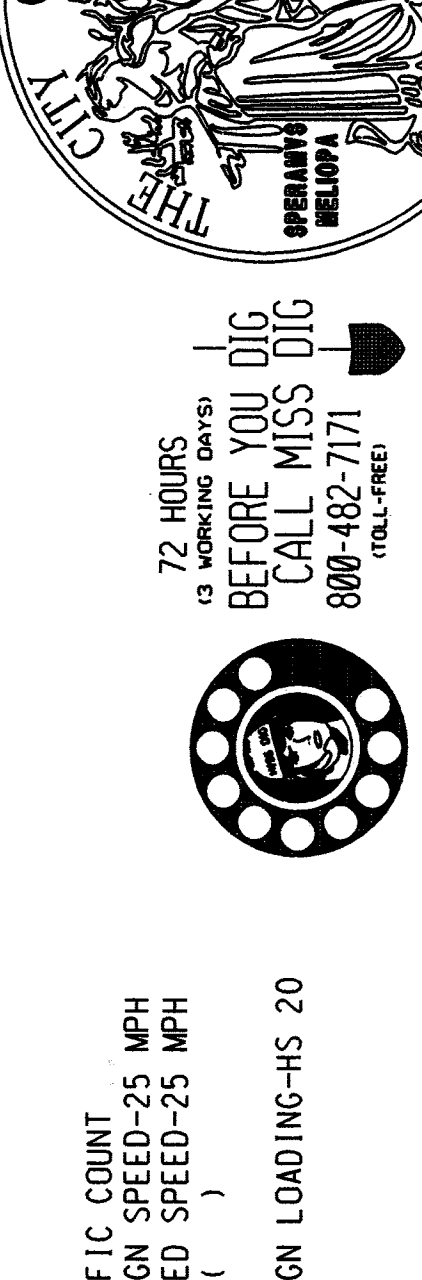
TO CONVERT INTO THE INTERNATIONAL GREAT LAKE DATUM (I.G.L.D.) USE THE FOLLOWING FORMULA:

IGLD 1985 ELEV. = CITY OF DETROIT ELEV. + 479.07

(ARMY CORP OF ENGINEERS)

TRAFFIC COUNT
DESIGN SPEED-25 MPH
POSTED SPEED-25 MPH
ADT ()
DESIGN LOADING-HS 20

72 HOURS
(3 WORKING DAYS)
BEFORE YOU DIG
CALL MISS DIG
800-482-7171
(TOLL-FREE)



- #### CITY OF DETROIT SPECIAL PROVISIONS
- CITY OF DETROIT-SPECIAL PROVISIONS
 - PUBLIC UTILITIES
 - SHOP DRAWINGS
 - WORKING AREA AND PROJECT CLEANUP
 - CHECKING EXISTING STRUCTURE DIMENSIONS
 - FIELD OFFICE
 - ANTI NOISE CONTROL
 - SWEEPING
 - OBTAINING REQUIRED NPDES PERMITS FOR STORAGE AREAS AND BORROW AREAS
 - NPDES REQUIREMENTS FOR PORTABLE PLAN OPERATIONS
 - QUALITY STANDARDS FOR WORK ZONE DEVICES
 - PROTECTION OF ENVIRONMENTAL AND CONTROL OF HAZARDOUS MATERIALS AND POLLUTING MATERIALS
 - REMOVING MISCELLANEOUS STRUCTURES AND MATERIALS
 - MAINTAINING TRAFFIC
 - HMA APPLICATION ESTIMATE
 - CURB, CONC. DETAIL CD, MODIFIED
 - SPECIAL NOTES
 - ABUTMENT STONE VENEER
 - END FACIA AND ARCHES
- * = SPECIAL DETAIL WILL BE INCLUDED IN THE CONSTRUCTION PLAN

INDEX OF SHEETS

PLANS	SHEET No.
TITLE SHEET	1
GENERAL PLAN OF SITE	2
LOC OF BORINGS	3
GENERAL PLAN OF STRUCTURE 1	4
GENERAL PLAN OF STRUCTURE 2	5
ABUTMENT DETAILS	6
SUPERSTRUCTURE DETAILS	7
SUPERSTRUCTURE DETAILS	8
SUMMARY OF STEEL REINFORCEMENT AND QUANTITIES	9
DETOUR PLAN	10

MOOT STANDARDS	
LIGHTED ARROWS AND BARRICADES	VI-125 H
SOIL EROSION AND SEDIMENTATION CONTROL MEASURES	R-96 D*
APPROACH CURB AND GUTTER, DOWNSPOUTS (FOR BRIDGE APPROACH CURB AND GUTTER)	R-32-E
MOLDING, BEVEL, LIGHT STANDARD ANCHOR BOLT ASSEMBLY AND NAME PLATE DETAILS	B-103-D
BRIDGE BARRIER RAILING, TYPE 4	B-17-C
CONCRETE CURB & CONCRETE CURB GUTTER	R-30-E
CONVENTIONAL PAVEMENT REINFORCEMENT	R-45-E
TEMPORARY CONCRETE BARRIER	R-52-E
GUARDRAIL APPROACH TERMINAL TYPES 1B & 1T	R-61-F
SODDING & SEEDING	R-100-D
LONGITUDINAL PAVEMENT JOINTS	R-41-E
COFFER DAM	EAS-34-A

CONTRACT FOR G. S. P. & UTILITIES

LOCAL AUTHORITY APPROVAL
CITY OF DETROIT
CITY ENGINEERING DIVISION
DEPARTMENT OF PUBLIC WORKS

APPROVED BY *[Signature]* DATE 10/21/07

APPROVED BY *[Signature]* DATE 10/21/07

PREPARED UNDER SUPERVISION OF
Rodolfo Flano 19128
REGISTERED PROFESSIONAL ENGINEER

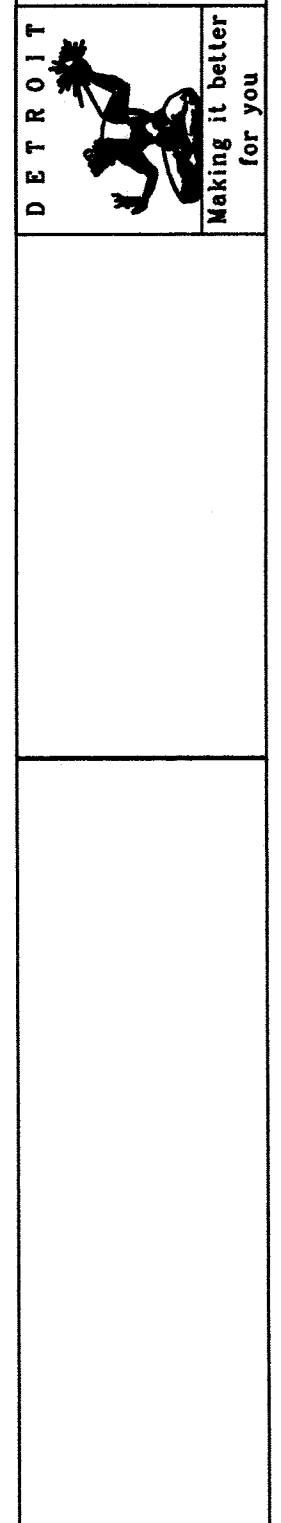
CITY OF DETROIT
DETROIT, MICHIGAN

(SEAL)

SCALE	NOT TO SCALE
PROJECT NO.	PW-6947
SHEET NO.	1 OF 10

TITLE SHEET

CENTRAL AVE.



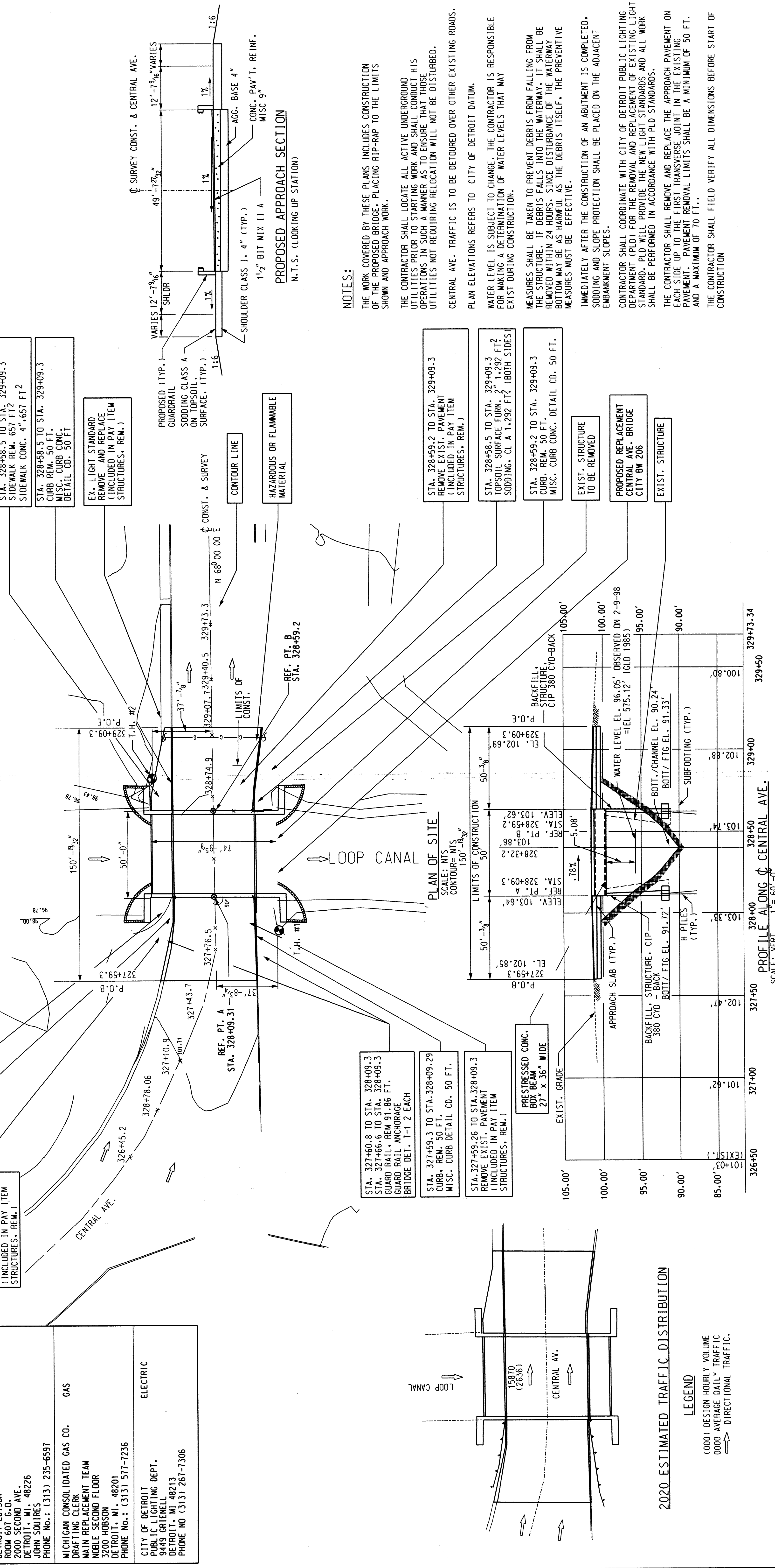
REVISIONS	100% COMPLETED	08-21-07	DSGN BY S. RAVALDT/23/07
			DR'N BY R. FLORODT/23/07
			CK'D BY R. FLORODT/23/07
			APP'D BY R. FLORODT/23/07

UTILITIES	
AMERITECH ROOM 101 4000 ALLEN RD. ALLEN PARK, MI. 48101 DAVE BUCIENSKI PHONE NO.: (313) 389-9819	TELEPHONE
CITY OF DETROIT WATER & SEWER DEPT. 735 RANDOLPH ST. DETROIT, MI. 48226 PHONE NO.: (313) 224-4800	WATER & SEWAGE
DETROIT EDISON ROOM 607 G.O. 2000 SECOND AVE. DETROIT, MI. 48226 JOHN SOURRES PHONE NO.: (313) 235-6597	ELECTRIC
MICHIGAN CONSOLIDATED GAS CO. DRAFTING CLERK MAIN REPLACEMENT TEAM NOBLE SECOND FLOOR 3200 HOBSON DETROIT, MI. 48201 PHONE NO.: (313) 577-7236	GAS
CITY OF DETROIT PUBLIC LIGHTING DEPT. 9449 GREENELL DETROIT, MI. 48213 PHONE NO (313) 267-7306	ELECTRIC

EXISTING STRUCTURE	
ONE SPAN STEEL STRUCTURE BUILT IN 1940. 48 FT CLEAR ROADWAY BRIDGE NO. 206	B.M. #1 ELEV. 102.31' - ARROW ON TOP OF FIRE HYDRANT 375' + EAST OF THE C. OF FOUNTAIN DRIVE AND 10' SOUTH CURB OF GRAND PRIX P.T. ROAD
STA. 327+59.3 TO 328+09.3 1/2 FT TOPSOIL SURFACE FURN. 1,076 FT ² SODDING CL. A @ 1,076 FT ² (BOTH SIDES)	B.M. #2 ELEV. 99.95' - TOP OF EAST BOLT OF LIGHT POLE AT SOUTHWEST CORNER OF THE INTERSECTION OF GRAND PRIX ROAD & CASINO WAY
STA. 327+59.3 TO 328+09.3 CURB. REM. 50 FT. MISC. CURB CONC. DETAIL CD. 50.0 FT	B.M. #252 ELEV. 101.62' - 5' NORTH OF NORTH CURB OF CENTRAL AVE. AND 44' EAST OF BRIDGE OVER LOOP CANAL IT IS A STANDARD CITY OF DETROIT MONUMENT

BENCH MARKS	
B.M. #1 ELEV. 102.31' - ARROW ON TOP OF FIRE HYDRANT 375' + EAST OF THE C. OF FOUNTAIN DRIVE AND 10' SOUTH CURB OF GRAND PRIX P.T. ROAD	
B.M. #2 ELEV. 99.95' - TOP OF EAST BOLT OF LIGHT POLE AT SOUTHWEST CORNER OF THE INTERSECTION OF GRAND PRIX ROAD & CASINO WAY	
B.M. #252 ELEV. 101.62' - 5' NORTH OF NORTH CURB OF CENTRAL AVE. AND 44' EAST OF BRIDGE OVER LOOP CANAL IT IS A STANDARD CITY OF DETROIT MONUMENT	

WITNESSES	
REFERENCE PT. A STA. 328+09.3 N 36 32' 25" E 145.39' S 55 21' 00" E 223.70' S 36 27' 10" W 107.57' N 68 59' 20" W 128.75'	(P.K. NAIL)
REFERENCE PT. B STA. 328+59.2 N 22 24' 20" E 104.98' S 43 19' 20" E 200.63' S 46 20' 40" W 152.47' N 80 37' 15" W 168.86'	(P.K. NAIL)



NOTES:

THE WORK COVERED BY THESE PLANS INCLUDES CONSTRUCTION OF THE PROPOSED BRIDGE, PLACING RIP-RAP TO THE LIMITS SHOWN AND APPROACH WORK.

THE CONTRACTOR SHALL LOCATE ALL ACTIVE UNDERGROUND UTILITIES PRIOR TO STARTING WORK AND SHALL CONDUCT HIS OPERATIONS IN SUCH A MANNER AS TO ENSURE THAT THOSE UTILITIES NOT REQUIRING RELOCATION WILL NOT BE DISTURBED.

CENTRAL AVE. TRAFFIC IS TO BE DETOURED OVER OTHER EXISTING ROADS.

PLAN ELEVATIONS REFERS TO CITY OF DETROIT DATUM.

WATER LEVEL IS SUBJECT TO CHANGE. THE CONTRACTOR IS RESPONSIBLE FOR MAKING A DETERMINATION OF WATER LEVELS THAT MAY EXIST DURING CONSTRUCTION.

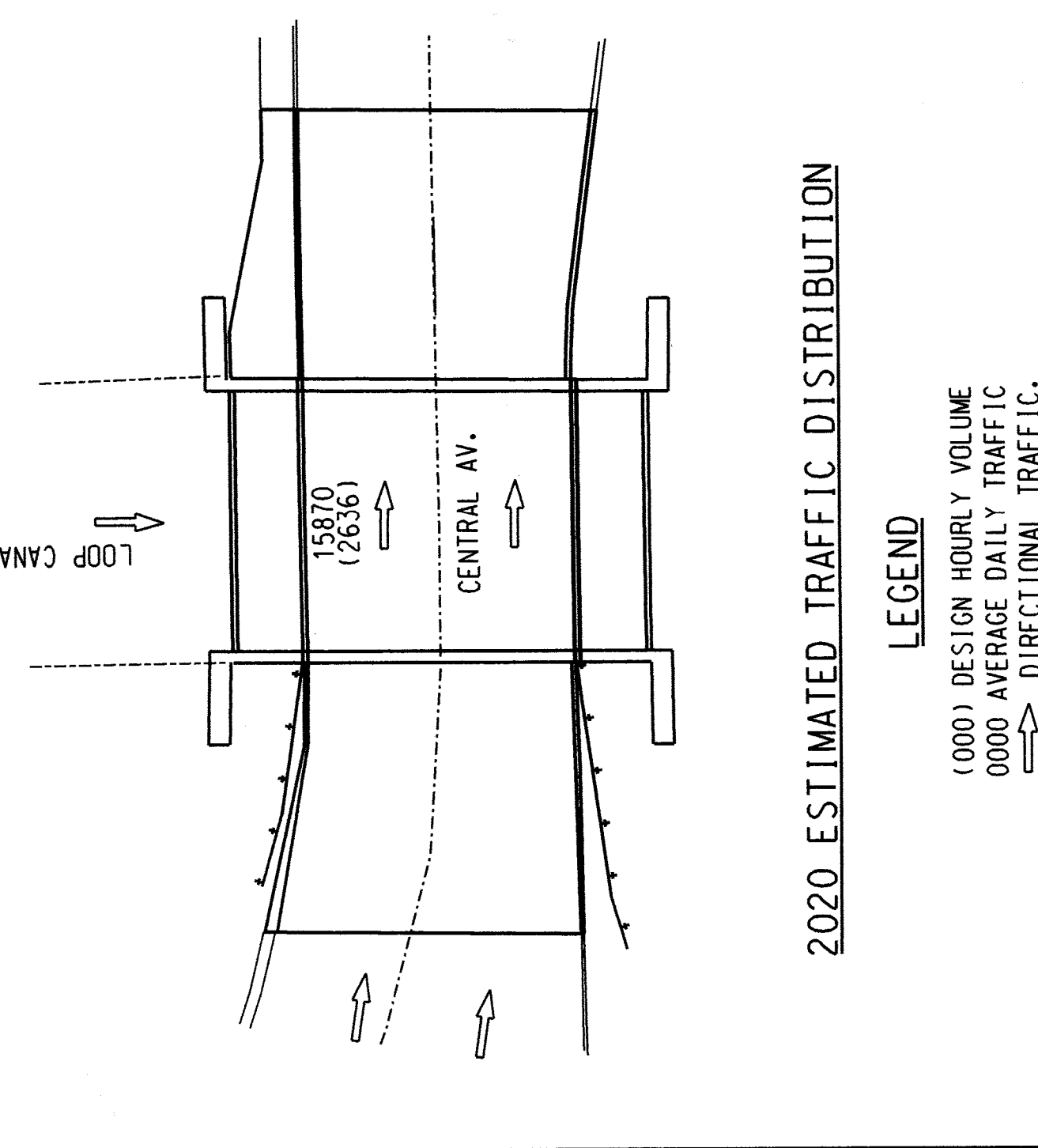
MEASURES SHALL BE TAKEN TO PREVENT DEBRIS FROM FALLING FROM THE STRUCTURE. IF DEBRIS FALLS INTO THE WATERWAY, IT SHALL BE REMOVED WITHIN 24 HOURS. SINCE DISTURBANCE OF THE WATERWAY BOTTOM MAY BE AS HARMFUL AS THE DEBRIS ITSELF, THE PREVENTIVE MEASURES MUST BE EFFECTIVE.

IMMEDIATELY AFTER THE CONSTRUCTION OF AN ABUTMENT IS COMPLETED, SODDING AND SLOPE PROTECTION SHALL BE PLACED ON THE ADJACENT EMBANKMENT SLOPES.

CONTRACTOR SHALL COORDINATE WITH CITY OF DETROIT PUBLIC LIGHTING DEPARTMENT (PLD) FOR THE REMOVAL AND REPLACEMENT OF EXISTING LIGHT STANDARD. PLD WILL PROVIDE THE NEW LIGHT STANDARDS AND ALL WORK SHALL BE PERFORMED IN ACCORDANCE WITH PLD STANDARDS.

THE CONTRACTOR SHALL REMOVE AND REPLACE THE APPROACH PAVEMENT ON EACH SIDE UP TO THE FIRST TRANSVERSE JOINT IN THE EXISTING PAVEMENT. PAVEMENT REMOVAL LIMITS SHALL BE A MINIMUM OF 50 FT. AND A MAXIMUM OF 70 FT..

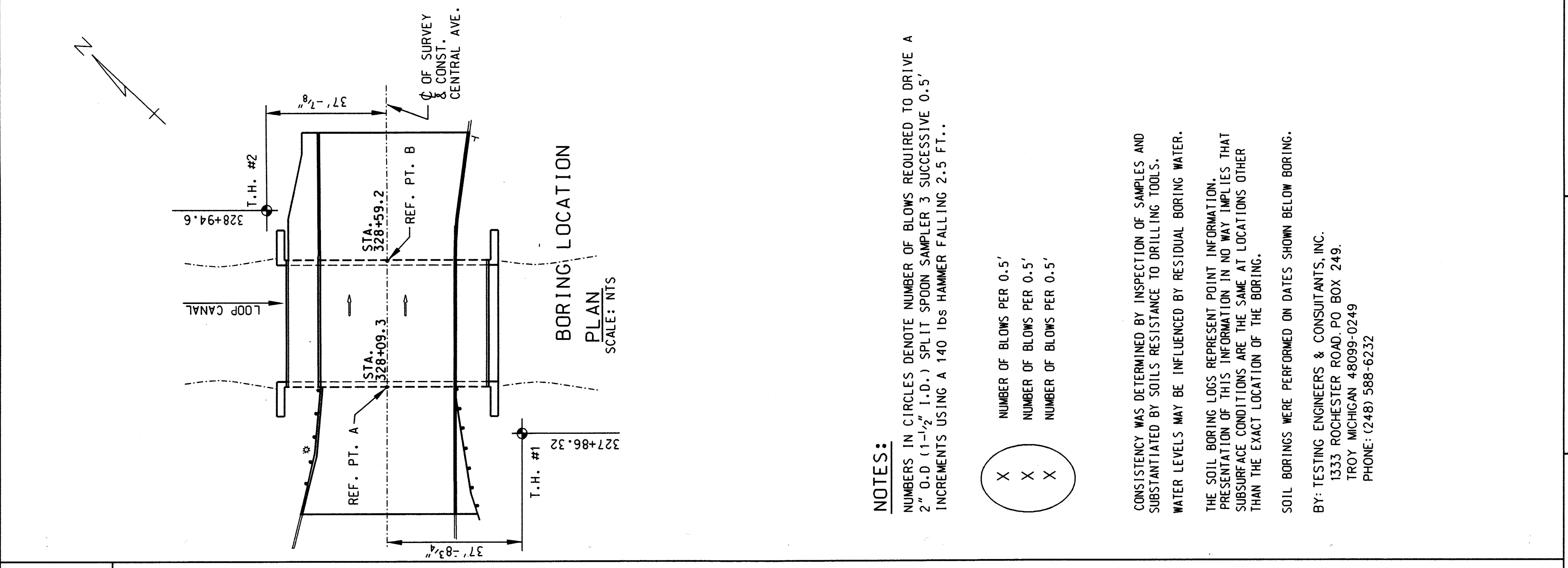
THE CONTRACTOR SHALL FIELD VERIFY ALL DIMENSIONS BEFORE START OF CONSTRUCTION



REVISIONS	

DESIGN BY	S.I.R.
DR'N BY	R.F.F.
CK'D BY	R.F.F.
APP'D BY	R.F.F.

GENERAL PLAN OF SITE	
CITY OF DETROIT MICHIGAN	CENTRAL AVE.
SCALE	NOT TO SCALE
PROJECT NO.	PW-6947
SHEET	2 OF 10



NOTES:
 NUMBERS IN CIRCLES DENOTE NUMBER OF BLOWS REQUIRED TO DRIVE A 2" O.D. (1-1/2" I.D.) SPLIT SPOON SAMPLER 3 SUCCESSIVE 0.5' INCREMENTS USING A 140 LBS HAMMER FALLING 2.5 FT..

(X)	NUMBER OF BLOWS PER 0.5'
(X)	NUMBER OF BLOWS PER 0.5'
(X)	NUMBER OF BLOWS PER 0.5'

CONSISTENCY WAS DETERMINED BY INSPECTION OF SAMPLES AND SUBSTITATED BY SOILS RESISTANCE TO DRILLING TOOLS.
 WATER LEVELS MAY BE INFLUENCED BY RESIDUAL BORING WATER.

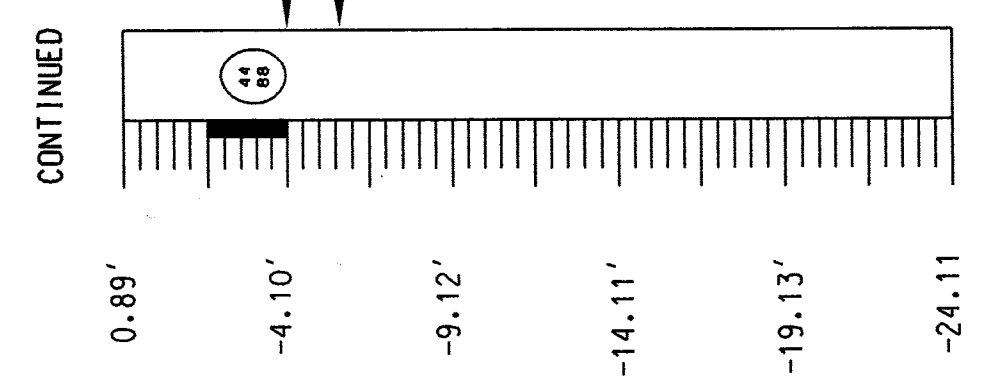
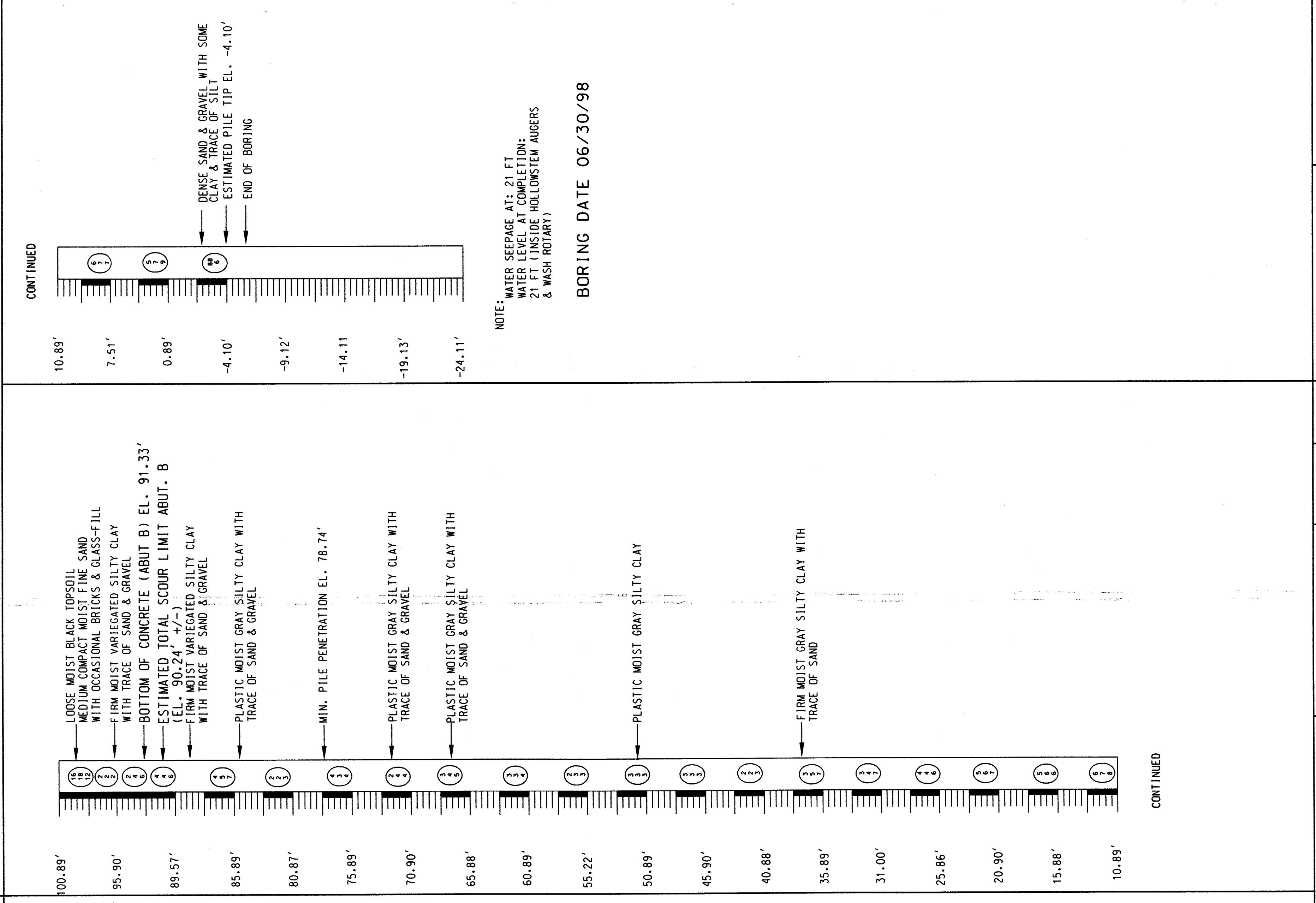
THE SOIL BORING LOGS REPRESENT POINT INFORMATION. PRESENTATION OF THIS INFORMATION IN NO WAY IMPLIES THAT SUBSURFACE CONDITIONS ARE THE SAME AT LOCATIONS OTHER THAN THE EXACT LOCATION OF THE BORING.

SOIL BORINGS WERE PERFORMED ON DATES SHOWN BELOW BORING.

BY: TESTING ENGINEERS & CONSULTANTS, INC.
 1333 ROCHESTER ROAD, P.O. BOX 249.
 TROY, MICHIGAN 48069-0249
 PHONE: (248) 568-6232

SCALE	NOT TO SCALE
PROJECT NO.	PW-6947
SHEET NO.	3 OF 10

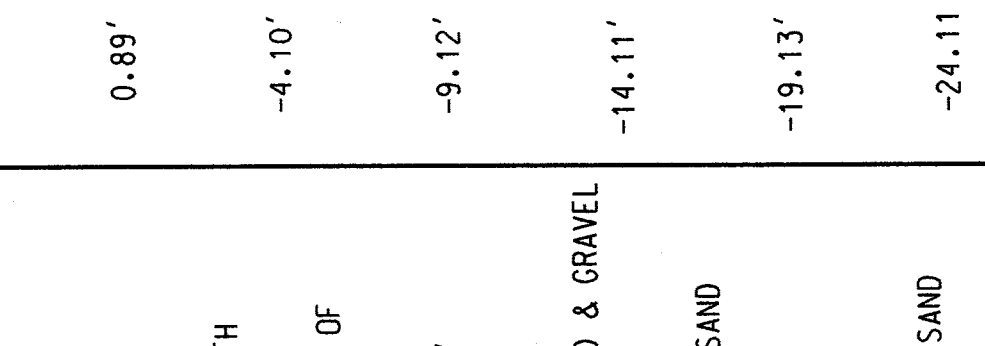
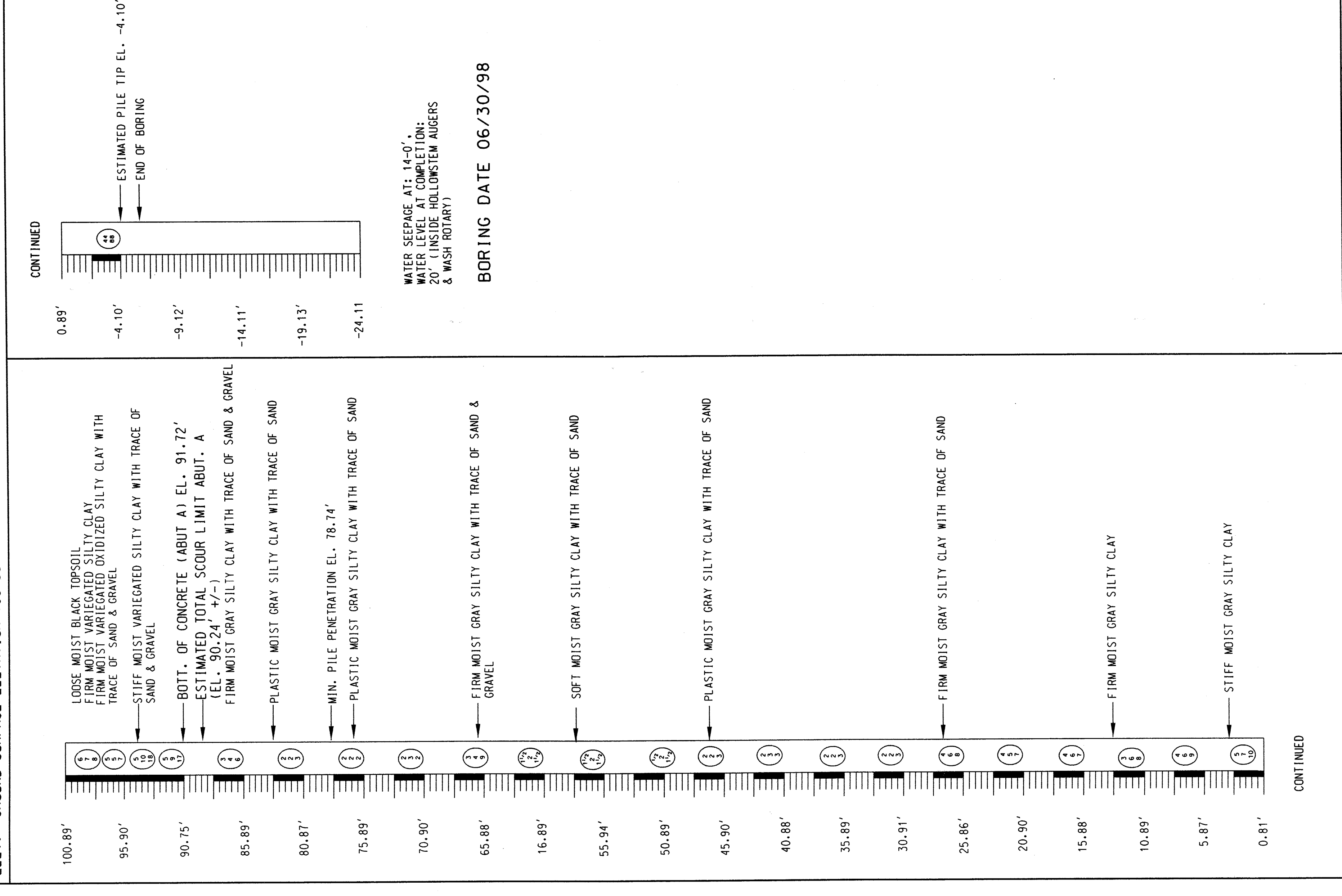
TEST HOLE TB-#R-1 37'-8 3/4"
 LOCATION STATION 327+88.79 11500 RT.
 CENTRAL AVE. OVER LOOP CANAL
 ELEV. GROUND SURFACE ELEVATION 100.89 FT.



WATER SEEPAGE AT: 14'-0"
 WATER LEVEL AT COMPLETION:
 20' (INSIDE HOLLOWSTEM AUGERS
 & WASH ROTARY)

BORING DATE 06/30/98

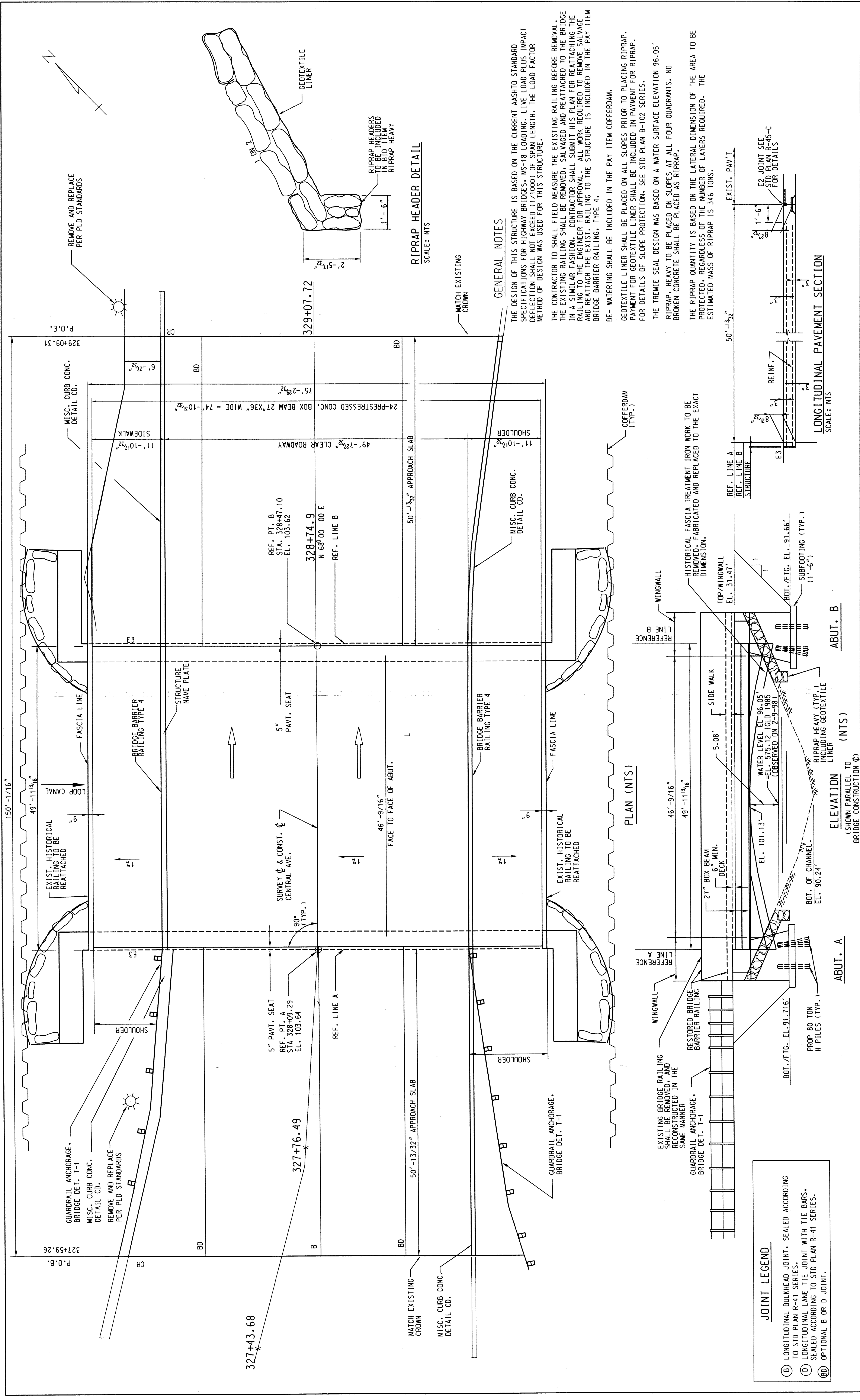
TEST HOLE TB-#R-2 37'-7 1/8" LT.
 LOCATION STATION 328+94.6
 CENTRAL AVE. OVER LOOP CANAL
 ELEV. GROUND SURFACE ELEVATION 100.88'



NOTE: WATER SEEPAGE AT: 21 FT
 WATER LEVEL AT COMPLETION:
 21 FT (INSIDE HOLLOWSTEM AUGERS
 & WASH ROTARY)

BORING DATE 06/30/98

REVISIONS	DESIGN BY	S. RAVAL	7/19/07
	DR'N BY	R. FLORE	7/19/07
	CK'D BY	R. FLORE	7/19/07
	APP'D BY	R. FLORE	7/19/07
	CITY OF DETROIT MICHIGAN		
	CENTRAL AVE.		
	LOG OF BORING		
	SCALE NOT TO SCALE		



REVISIONS		DESIGN		DATE	
		DR'N BY	S. RAVAL	6/15/07	
		CK'D BY	R. FLORO	6/15/07	
		APP'D BY	R. FLORO	6/15/07	

SCALE	NOT TO SCALE
PROJECT NO.	PW-6947
SHEET NO.	4 OF 10

APPROACHES

ITEM CODE	ITEM	UNIT	AMOUNT
1000001	MOBILIZATION, MAX	Lsum	1
2040005	CURB, REM	FT	200
2040008	GUARDRAIL, REM	FT	92
2040013	SIDEWALK, REM	SYD	73
3020010	AGGREGATE BASE 4 INCH	SYD	553
3020010	SHOULDER C1 1, 4 INCH	SYD	292
5020033	HMA, 11A	T	92
6020016	CONC. PAVT MISC REINF. 9 INCH	SYD	553
8030002	CONC. CURB, DETAIL CD, MODIFIED	SFT	657
8070022	GUARDRAIL ANCH., BRIDGE DET T 1	ea	2
8120102	PLASTIC DRUM, HIGH INTENSITY, LIGHTED, FURN.	ea	30
8120103	PLASTIC DRUM, HIGH INTENSITY, LIGHTED, OPER.	ea	30
8120005	BARRICADE, TYPE III, HIGH INTENSITY, LIGHTED, FURN.	ea	6
8120006	BARRICADE, TYPE III, HIGH INTENSITY, LIGHTED, OPER.	ea	6
8120120	STON, TYPE B, TEMP, FURN	SFT	323
8160055	SODDING	SYD	263
8160060	TOP SOIL SURFACE, FURN 2 INCH	SYD	263
3040020	WATER	UNIT	7

BRIDGE

ITEM CODE	ITEM	UNIT	AMOUNT
2040020	STRUCTURES, REM	Lsum	1
2060002	BACKFILL, STRUCTURE, CIP	CYD	759
2060011	EXCAVATION, ROCK FUN	CYD	759
6050100	CONCRETE QUALITY ASSURANCE	CYD	305
6050101	CONCRETE QUALITY INITIATIVE	dir	1400
7040007	COFFERDAMS	Lsum	1
7050034	PILE, STEEL, FURN AND DRIVEN, 14 INCH	FT	3491
7050035	TEST PILE, STEEL, 14 INCH	ea	2
7050002	PILE DRIVING EQUIPMENT, FURN.	Lsum	1
7060004	CONC. GRADE 1	CYD	88
7060010	SUBSTRUCTURE CONC	CYD	209
7060020	SUBSTRUCTURE CONC	CYD	101
7060034	REINFORCEMENT, STEEL, FINISH & CURE	Lsum	1
7060035	REINFORCEMENT, STEEL, EPOXY COATED	LBS	17054
7060040	STRUCTURE NAME PLATE	ea	1
7070065	WATER REPELLENT TREATMENT, PENETRATING	SYD	56
7080004	BEARING, ELASTOMERIC, 1 INCH	SFT	71
7080015	POST TENSIONING	SFT	3744
7100001	JOINT WATERPROOFING	Lsum	1
7110001	BRIDGE BARRIER RAILING, TYPE 4	SFT	783
8130005	RIPRAP, HEAVY	FT	102
8190301	LIGHT STD SHAFT, INSTALL SALV	SYD	383
8190306	LIGHT STD SHAFT, REM AND SALV	ea	2
		ea	2

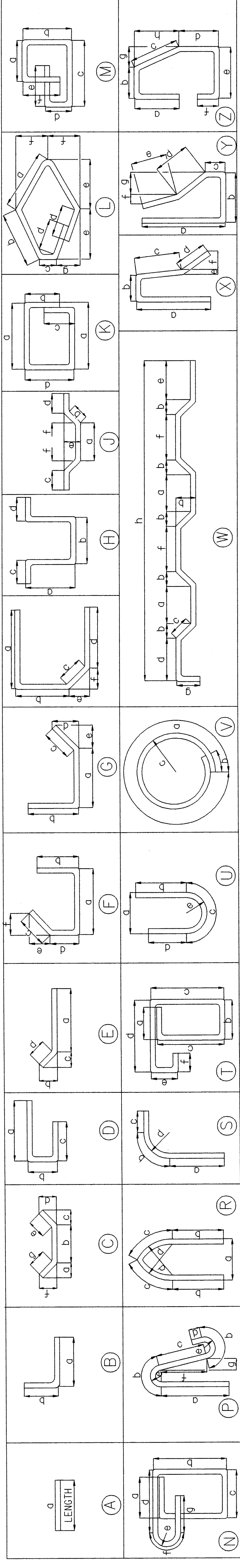
STEEL REINFORCEMENT

BAR	DIMENSIONS IN FT.										LENGTH IN FT.	NO. REQ'D	TOTAL WT. (lbs)
	a	b	c	d	e	f	g	h					
EB041403	11'-3 ³ / ₈ "	3'-0"									14'-3 ³ / ₈ "	12	114.64
EB041509	12'-9 ¹ / ₂ "	3'-0"									15'-9 ¹ / ₂ "	12	125.66
ED040709	3'-7 ⁵ / ₈ "	0'-6"	1'-7 ⁵ / ₈ "								7'-8 ¹ / ₂ "	60	308.64
A061503	15'-3 ¹ / ₈ "										15'-3 ¹ / ₈ "	56	1,283.07
A064010	40'-10 ³ / ₈ "										40'-10 ³ / ₈ "	20	1,227.95
B060806	4'-1 ⁵ / ₈ "	4'-5 ³ / ₈ "									8'-6 ³ / ₈ "	40	511.46
C061110	1'-2 ⁵ / ₈ "	1'-6"									11'-10 ⁶ / ₈ "	280	4,980.16
F061310	3'-5 ¹ / ₈ "	5'-3"	0	5'-1 ¹ / ₂ "	5'-1 ¹ / ₂ "	5'-1 ¹ / ₂ "	5'-3"				13'-9 ³ / ₈ "	280	5,809.08
F061208	4'-10 ³ / ₈ "	0	7'-9 ¹ / ₈ "	0	7'-3 ³ / ₈ "	2'-9 ³ / ₈ "					40'-10 ³ / ₈ "	4	77.16
A084010	40'-10 ³ / ₈ "										408'-5 ¹ / ₂ "	20	2,180.34
B080800	4'-1 ⁵ / ₈ "	4'-8 ³ / ₈ "									8'-2 ¹ / ₈ "	8	176.37
B081202	4'-3 ³ / ₈ "	7'-10 ¹ / ₂ "									12'-1 ¹ / ₈ "	8	260.14
TOTAL STEEL REINFORCEMENT													17,054.67 lbs=8.5 TON

ABUTMENTS

STEEL REINFORCEMENT, EPOXY

BAR	DIMENSIONS IN FT.										LENGTH IN FT.	NO. REQ'D	TOTAL WT. (lbs)
	a	b	c	d	e	f	g	h					
EA 032501	25'-2 ³ / ₈ "										25'-23 ³ / ₂ "	172	1,622.57
EA 043711	37'-11 ³ / ₈ "										37'-11 ³ / ₈ "	196	4,966.93
EA 042506	25'-5 ⁵ / ₈ "										25'-5 ⁵ / ₈ "	34	577.60
EA 041201	12'-8 ³ / ₈ "										12'-8 ³ / ₈ "	35	282.19
ED 040211	0'-10 ⁵ / ₈ "	11'-2"									2'-10 ⁵ / ₈ "	70	134.48
EP 040702	2'-11 ¹ / ₈ "	0'-6 ¹ / ₈ "	2'-10 ¹ / ₈ "	0'-3"	0'-1 ¹ / ₈ "	2'-9 ¹ / ₈ "	0'-3 ³ / ₄ "				7'-2 ¹ / ₈ "	77	370.37
EZ 050501	1'-10 ¹ / ₄ "	0'-3 ³ / ₄ "	1'-5 ¹ / ₈ "	0'-8 ¹ / ₄ "	0'-5 ¹ / ₈ "	0'-4 ¹ / ₈ "	0'-10 ¹ / ₄ "	1'-2"			5'-1 ⁵ / ₈ "	52	277.78
TOTAL STEEL REINFORCEMENT													8,232 lbs= 4.1 TON



NOTES:

TOLERANCE IN CUTTING AND BENDING BARS ARE AS ESTABLISHED IN THE MANUAL OF STANDARD PRACTICE OF THE CONCRETE REINFORCING INSTITUTE AND THE DETAILING MANUAL OF THE AMERICAN CONCRETE INSTITUTE. STEEL FOR REINFORCING SHALL BE INTERMEDIATE OR HARD GRADE ONLY.

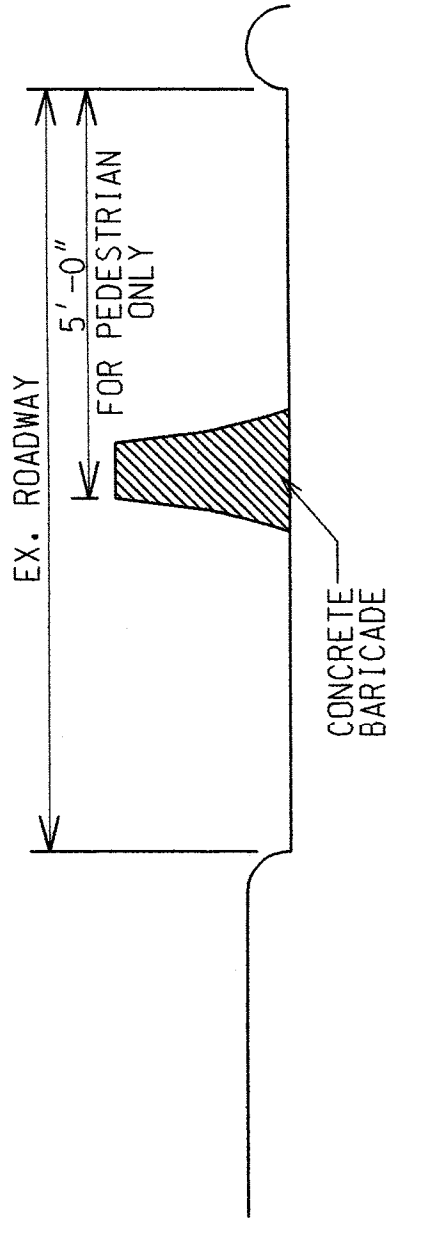
ALL RIGHT ANGLE BENDS IN REINFORCING STEEL TO BE MADE ABOUT A PIN OF MINIMUM DIAMETER ALLOWED BY THE STANDARD SPECIFICATIONS.

Revised for PW-6947	08/2007	DSGN BY R. RAVAL	07/23/07	CITY OF DETROIT MICHIGAN	CENTRAL AVE.	SUMMARY OF STEEL REINFORCEMENT	SCALE NOT TO SCALE
		DR'N BY R. FLORO	07/23/07				PROJECT NO. PW-6947
		APP'D BY R. FLORO	07/23/07				SHEET NO. 9 OF 10

SIGN CHART			
I.D. NUMBER	SIGN	SIZE	NUMBER REQUIRED
1		48" X 48"	0
2		48" X 48"	2
3		48" X 48"	5
4		36" X 12" 21" X 15"	1
5		48" X 30" 36" X 12"	0
6		36" X 12" 30" X 24"	3
7		36" X 12" 30" X 24"	7
8		36" X 12" 30" X 24"	24
9		48" X 30"	2
10		48" X 48" 36" X 12"	4
11		24" X 24"	8
12			4
13			2
14			1
15			5
16			2
17			2
18			4
19			2
20			2

MISCELLANEOUS QUANTITIES		
ITEM	UNIT	AMOUNT
BARRICADE, TYPE 111, LIGHTED, OPER	ea	6
BARRICADE, TYPE 111, LIGHTED, FURN	ea	6
PLASTIC DRUM, LIGHTED, FURN	ea	30
PLASTIC DRUM, LIGHTED, OPER	ea	30
SIGN, TYPE B, TEMPORARY, RETROREFLECTIVE SHEETING	ea	29

SIGN TYPE LEGEND	
	SIGN, TYPE B
	TYPE 111 BARRICADE



SECTION X-X (PEDESTRIAN PATHWAY)
N.T.S.

THE CONTRACTOR WILL FURNISH AND ERECT THE SIGNS LISTED ON THE SIGN CHART AT LOCATIONS SHOWN.

AS DIRECTED BY THE ENGINEER, THE CONTRACTOR SHALL PROVIDE AND MAINTAIN ANY ADDITIONAL SIGNS, BARRICADES AND LIGHTS WITHIN THE PROJECT TO PROTECT THE TRAFFIC AND WORK AREA.

THE CONTRACTOR SHALL PLACE SANDBAGS ON BARRICADES TO PREVENT MOVEMENT OF THE BARRICADES. THE CONTRACTOR SHALL ATTACH AND MAINTAIN THREE (3) STEADY BURN AMBER LIGHTS (TYPE "C") ON EACH OF THE BARRICADES.

THE CONTRACTOR SHALL ATTACH AND MAINTAIN ONE (1) BATTERY OPERATED AMBER FLASHER LIGHTS (TYPE "A") AND ONE (1) ORANGE FLUORESCENT DAY-GLO FLAG ON EACH ADVANCE CONSTRUCTION SIGN (SIGNS 1, 2 & 3).

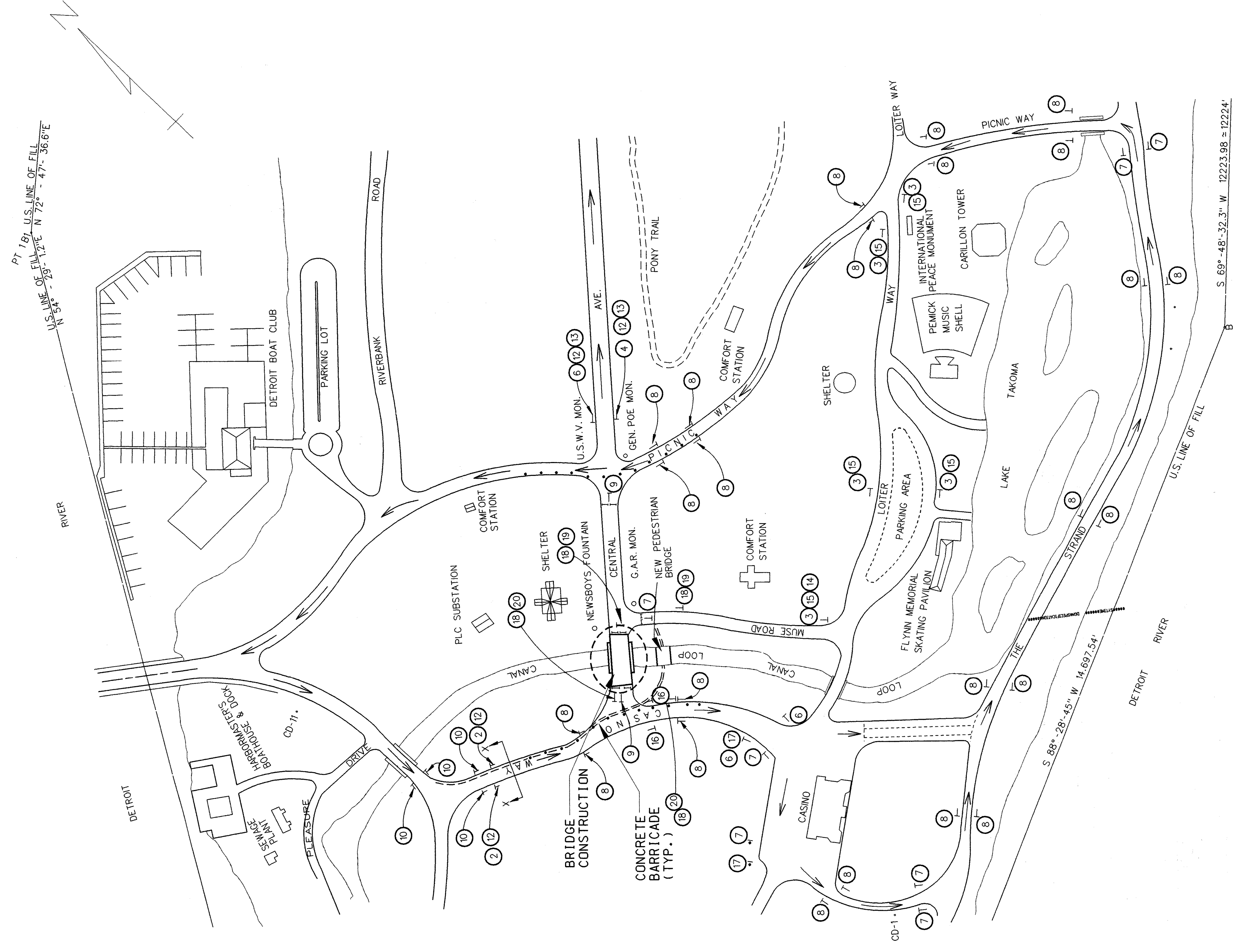
TRAFFIC CONTROL SIGNS WHICH ARE REMOVED FROM THE VICINITY OF THE PROJECT DUE TO INTERFERENCE SHALL BE TURNED OVER TO THE CITY. UPON COMPLETION OF THE PROJECT, TRAFFIC CONTROL SIGNS AND STREET NAME SIGNS WILL BE RESET IN THEIR PROPER POSITION BY THE CONTRACTOR.

THE CONTRACTOR SHALL NOT BEGIN ANY OPERATIONS ON THE PROJECT UNTIL ALL OF THE SIGNS HAVE BEEN POSITIONED AND FLASHER LIGHTS AND FLAGS ARE ATTACHED TO ALL REQUIRED SIGNS AND BARRICADES.

ANY OTHER SIGNS WHICH THE CONTRACTOR MAY BE REQUIRED TO FURNISH SHALL CONFORM TO MICHIGAN MANUAL OF UNIFORM TRAFFIC CONTROL DEVICES.

ALL CONSTRUCTION SIGNS SHALL CONFORM TO MOOT 1996 STANDARD SPECIFICATIONS FOR CONSTRUCTION 812.02-B.1.

THE "DETOUR PLAN" WHICH INCLUDES THE VEHICULAR AND PEDESTRIAN ROUTES MAY BE CHANGED AT THE DISCRETION OF THE ENGINEER/PARK RECREATION AUTHORITY.



REVISIONS

DSGN BY	S. RAVAL
DR'N BY	-
CK'D BY	R. FLORE
APP'D BY	R. FLORE

CITY OF DETROIT MICHIGAN

DETOUR PLAN

CENTRAL AVE.

SCALE NOT TO SCALE

PROJECT NO. PW-6947

SHEET NO. 10 OF 10