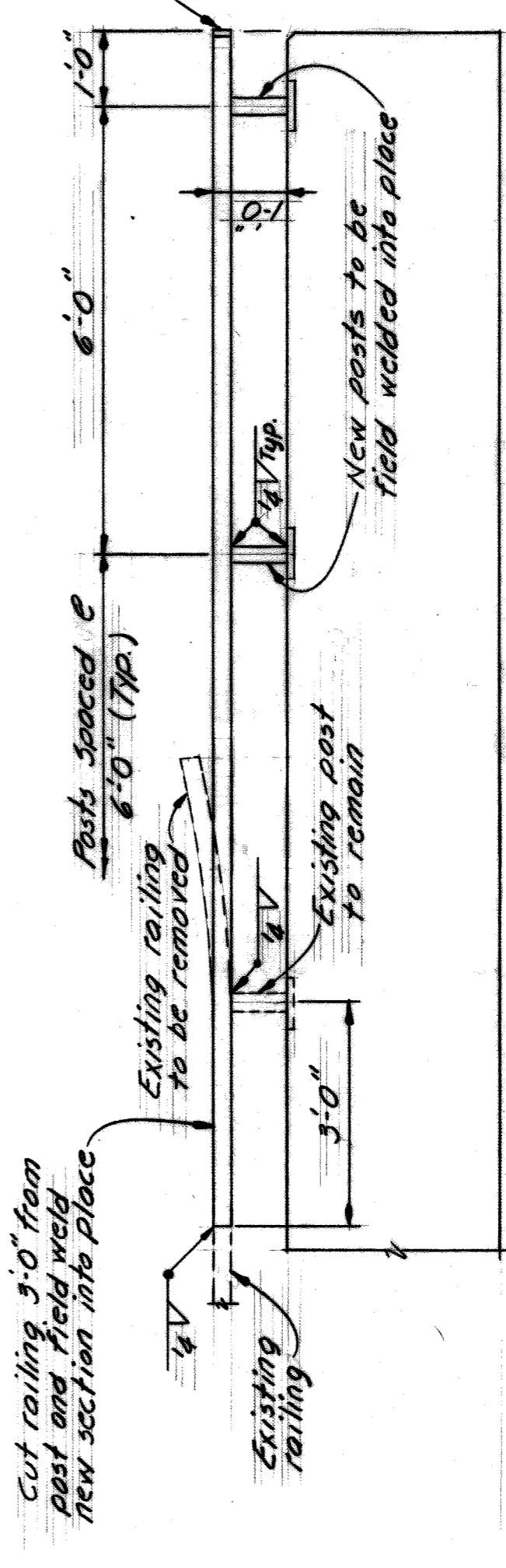
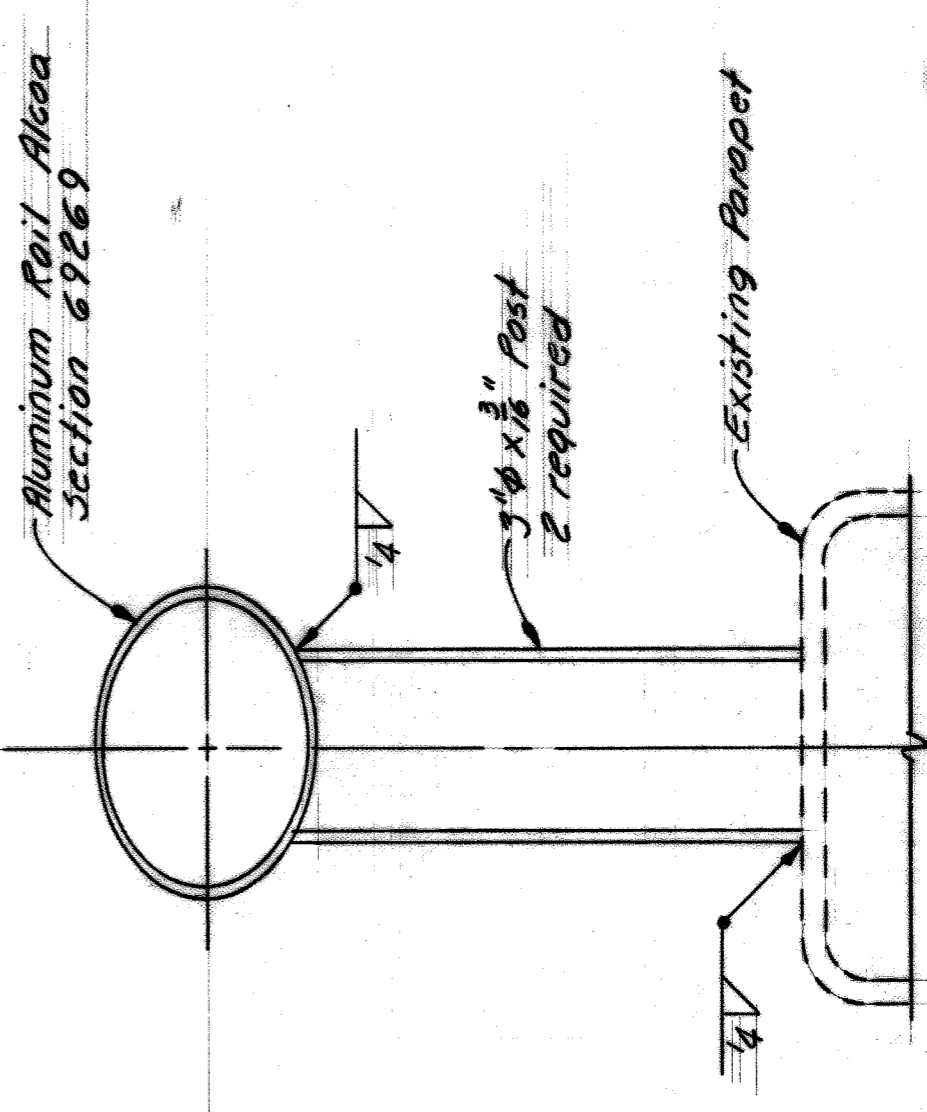
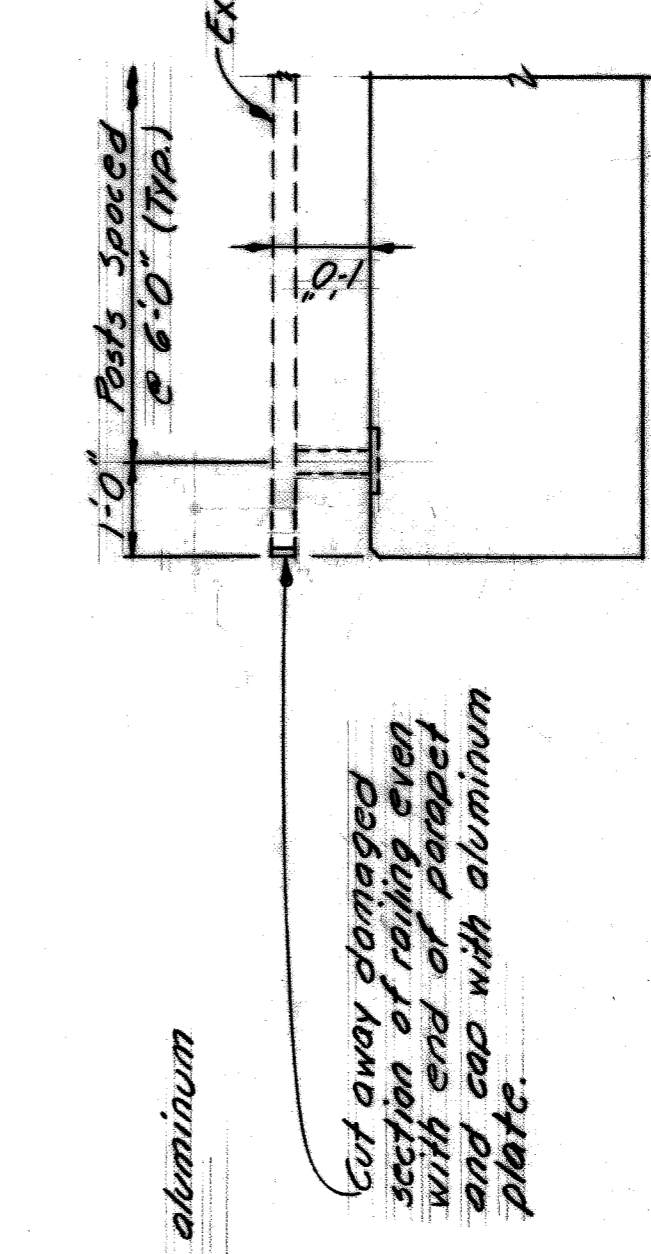


PLAN



RAILING ELEVATION S.W. Wingwall



RAILING ELEVATION N.E. Wingwall

GENERAL NOTES:

Remove any debris between the N.E. & S.W. Wingwalls and their respective sidewalks. Relocate the wall parapets on the wingwalls to their original positions as near as possible. Fill any remaining cracks with Grade A Concrete.

Remove the damaged section of railing on the N.E. Wingwall flush with the end of the parapet and cap with an aluminum plate.

Cut out the damaged section of railing on the S.W. Wingwall, 16 feet from the end of the parapet. Leave the railing post under this damaged section in place. Field weld new section into place and cap with an aluminum plate.

Repair spalled or cracked concrete by epoxy bonding a high strength concrete. Thoroughly clean all areas to be patched to remove all loose concrete dust, etc. Apply bonding agent such as Sika Calma Fix as per manufacturer's recommendations. Fill cracks with high strength concrete within the contact time of the resin. Cure in accordance with the requirements of the resin and concrete.

CITY OF DETROIT DEPARTMENT OF PUBLIC WORKS CITY ENGINEERS OFFICE		FOR DEPARTMENT OF PUBLIC WORKS		BW 202 SUNSET DR. OVER LOOP CANAL ON BELLE ISLE		SHEET ___ OF ___ SHEETS	
APPROVED:		DESIGNED BY		DRAWN BY		CONTRACT NO.	
A. G.		A. G.		A. G.		DRWG NO.	
J. Mc Guire		J. Mc Guire		J. Mc Guire		DATE	
NOV 1977							