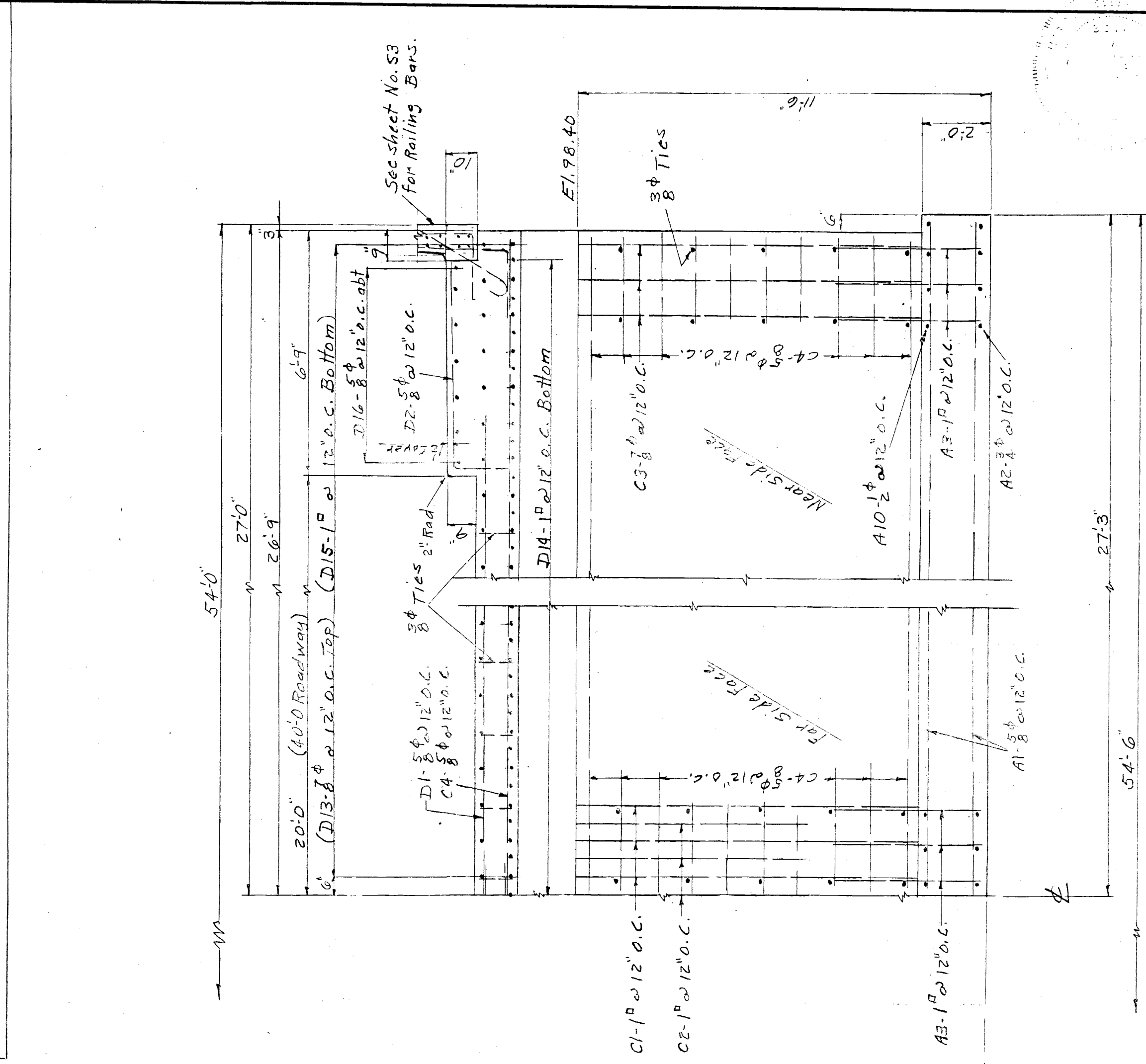
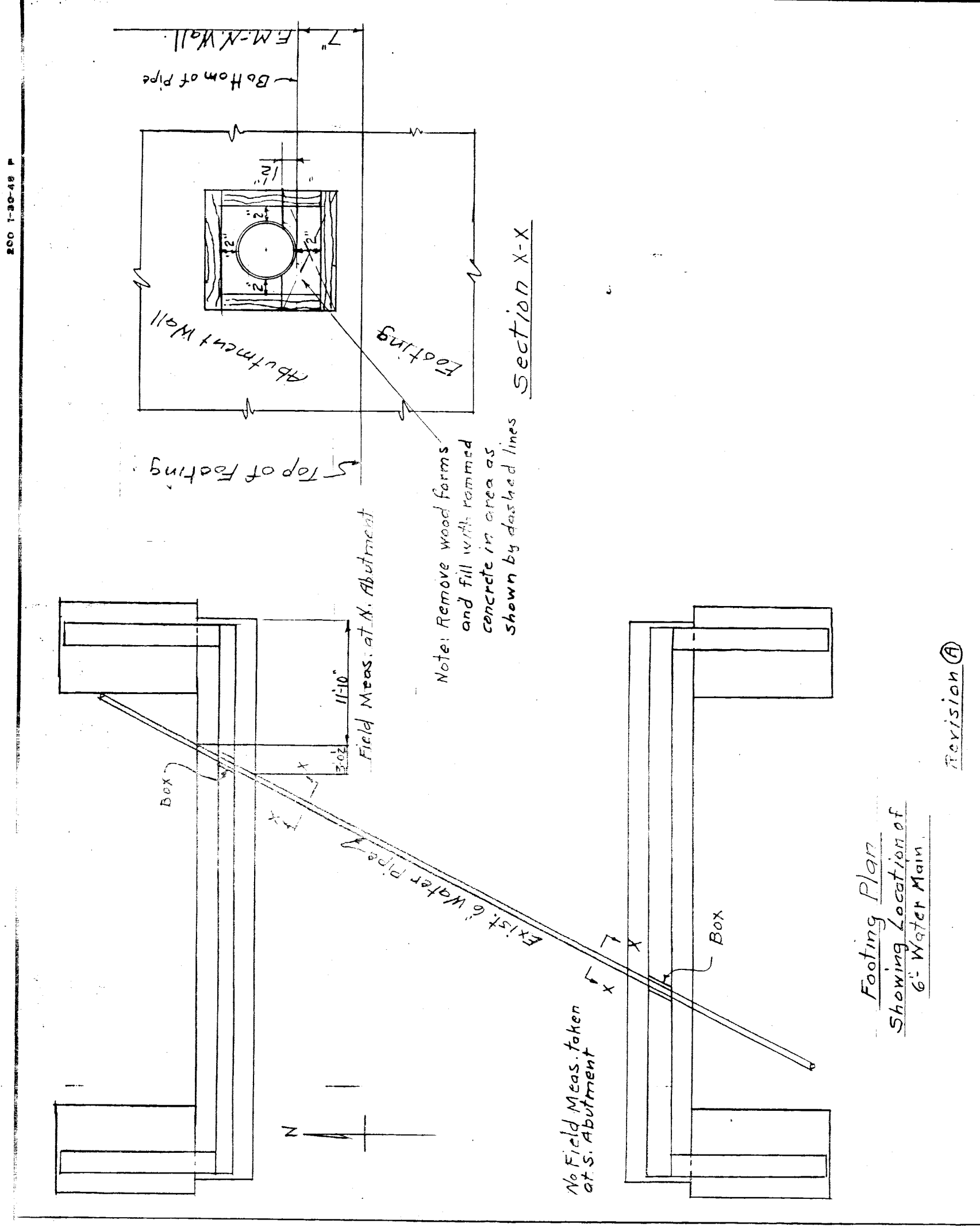
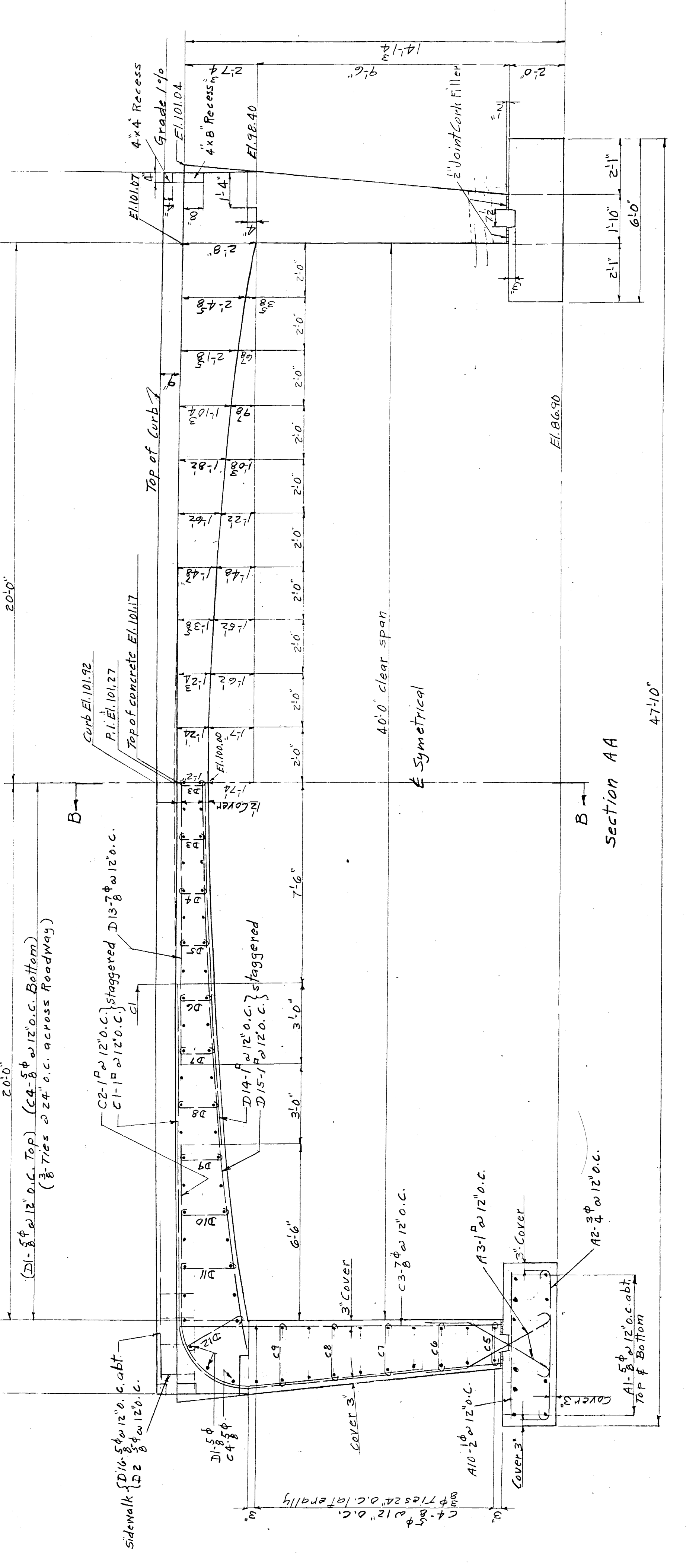
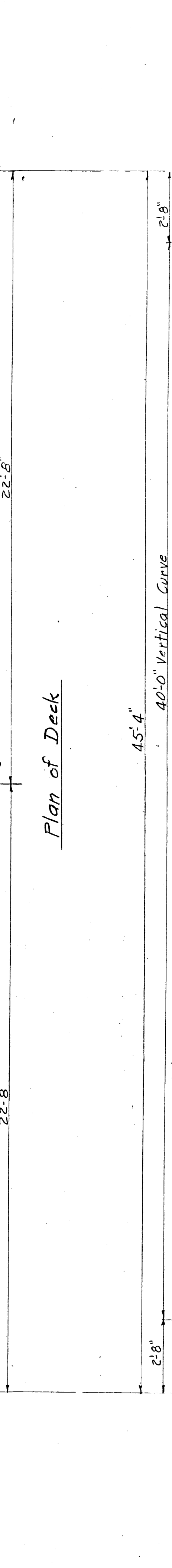
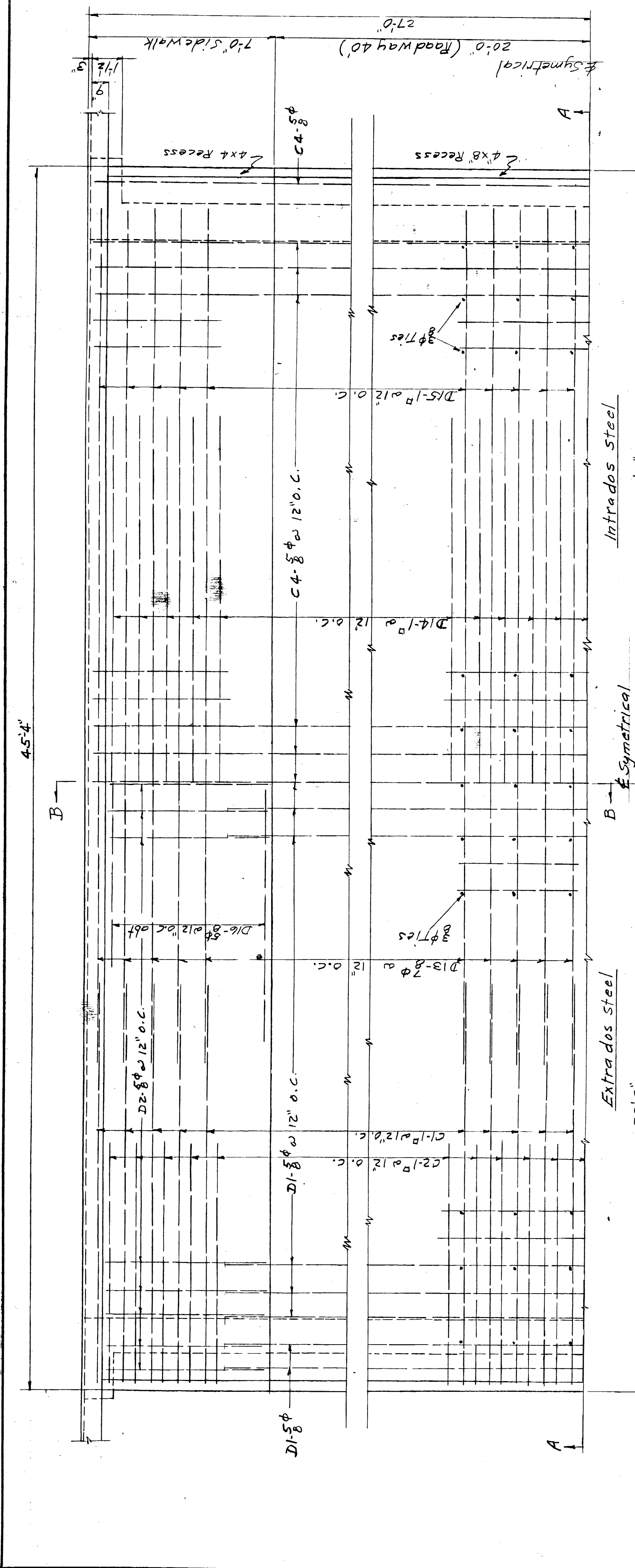


101 7/14/46
 38P 4/4/46
 18P 4/27/46
 86P 2-1-46
 48P 2-1-45
 48P 10-8-47



CITY OF DETROIT DEPARTMENT OF PUBLIC WORKS CITY ENGINEERS OFFICE BUREAU OF DESIGN		APPROVED <i>J. L. Garton</i> SR. ASST. CITY ENGINEER		SHEET 2 OF 4 SHEETS	
DESIGNED BY <i>REK:pack</i>		DRAWN BY <i>REK:pack</i>		JOB NO. PW-75	
TRACED BY <i>REK:pack</i>		CHECKED BY <i>A. Chan</i>		DRWG NO. S-1 01	
INTERIOR		REVISIONS		DATE MAY 1947	
A. Box opening for 6" Water Main		DESCRIPTION		SCALE 3/8" = 1'-0"	
B. Box opening for 6" Water Main		DESCRIPTION		AP-60	
C. Box opening for 6" Water Main		DESCRIPTION		AP-60	
D. Box opening for 6" Water Main		DESCRIPTION		AP-60	
E. Box opening for 6" Water Main		DESCRIPTION		AP-60	
F. Box opening for 6" Water Main		DESCRIPTION		AP-60	
G. Box opening for 6" Water Main		DESCRIPTION		AP-60	
H. Box opening for 6" Water Main		DESCRIPTION		AP-60	
I. Box opening for 6" Water Main		DESCRIPTION		AP-60	
J. Box opening for 6" Water Main		DESCRIPTION		AP-60	
K. Box opening for 6" Water Main		DESCRIPTION		AP-60	
L. Box opening for 6" Water Main		DESCRIPTION		AP-60	
M. Box opening for 6" Water Main		DESCRIPTION		AP-60	
N. Box opening for 6" Water Main		DESCRIPTION		AP-60	
O. Box opening for 6" Water Main		DESCRIPTION		AP-60	
P. Box opening for 6" Water Main		DESCRIPTION		AP-60	
Q. Box opening for 6" Water Main		DESCRIPTION		AP-60	
R. Box opening for 6" Water Main		DESCRIPTION		AP-60	
S. Box opening for 6" Water Main		DESCRIPTION		AP-60	
T. Box opening for 6" Water Main		DESCRIPTION		AP-60	
U. Box opening for 6" Water Main		DESCRIPTION		AP-60	
V. Box opening for 6" Water Main		DESCRIPTION		AP-60	
W. Box opening for 6" Water Main		DESCRIPTION		AP-60	
X. Box opening for 6" Water Main		DESCRIPTION		AP-60	
Y. Box opening for 6" Water Main		DESCRIPTION		AP-60	
Z. Box opening for 6" Water Main		DESCRIPTION		AP-60	

BW 202 - Canoe Bay Over Canal
 BELLE ISLE BRIDGES
 BRIDGE NO. 2
 ARCH PILES
 SCALE 3/8" = 1'-0"
 DATE MAY 1947
 AP-60