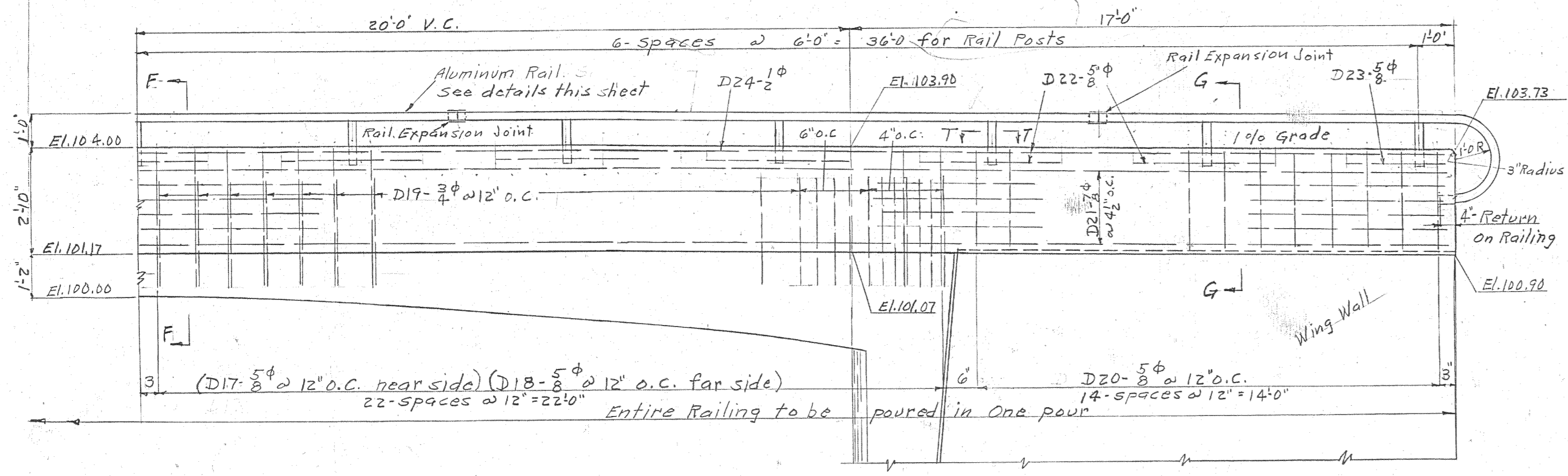
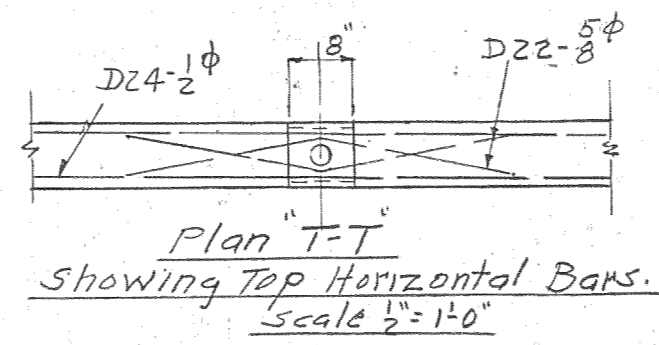


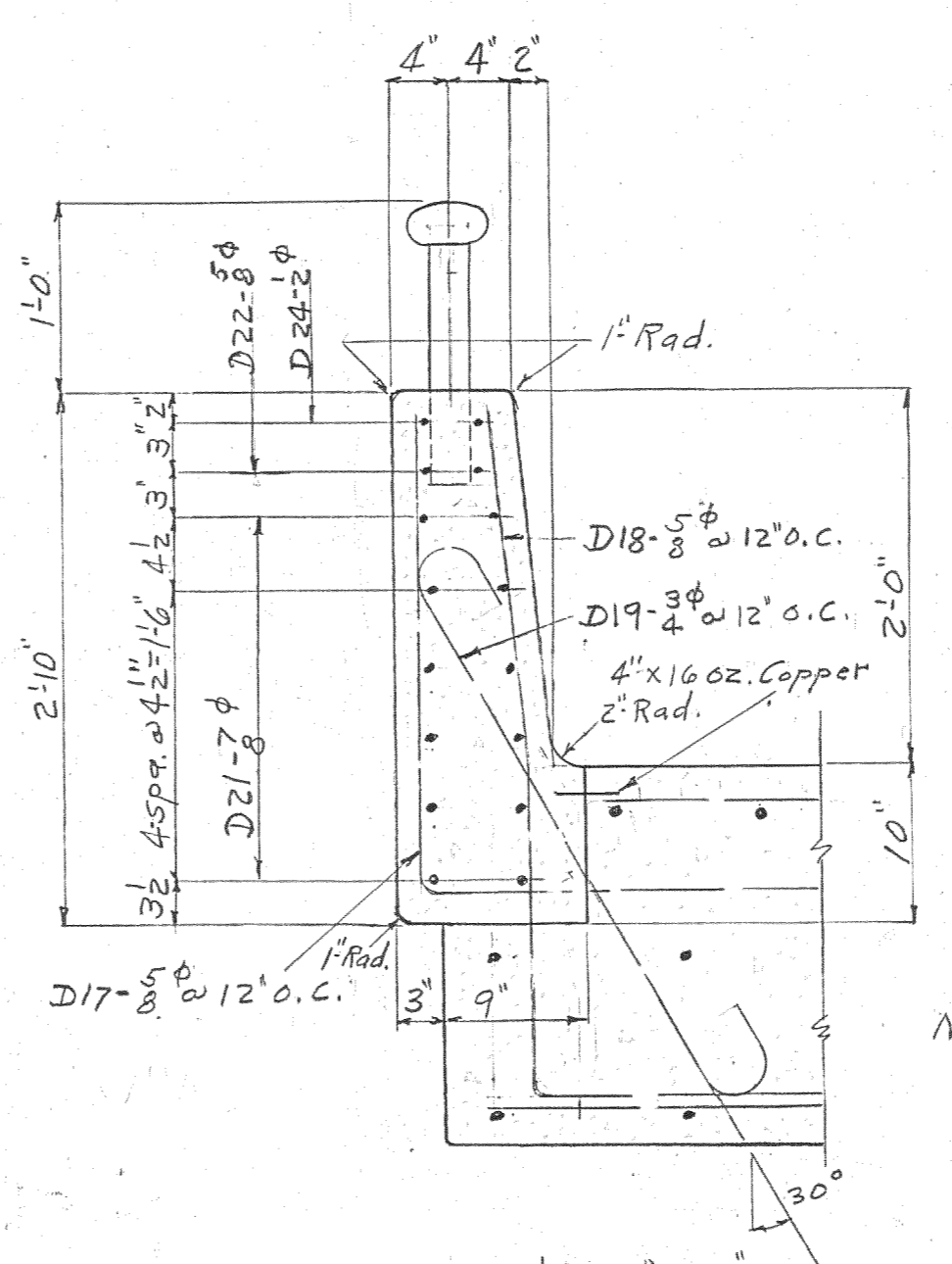
D.P. 7/10/46
 3BP 4/11/46
 1BP 4/15/46
 S.O.P. 8-2-46
 10 B.P. 7-11-49



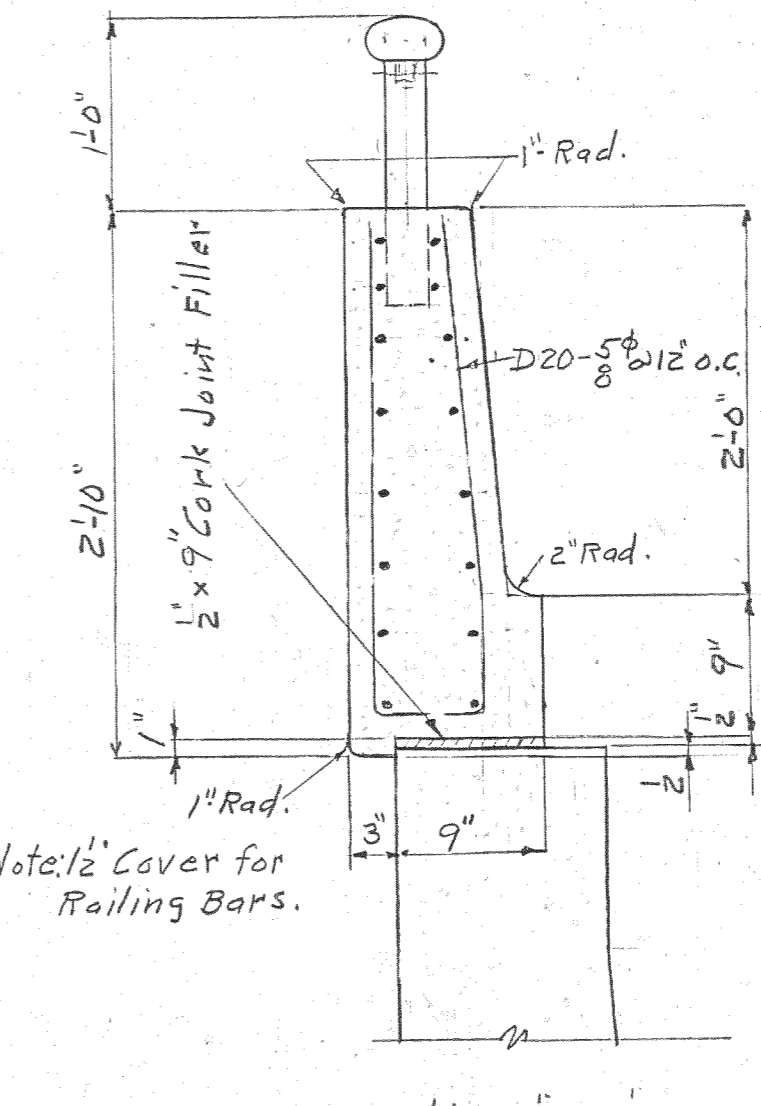
Half Elevation of Railing
 Scale 3/8" = 1'-0"



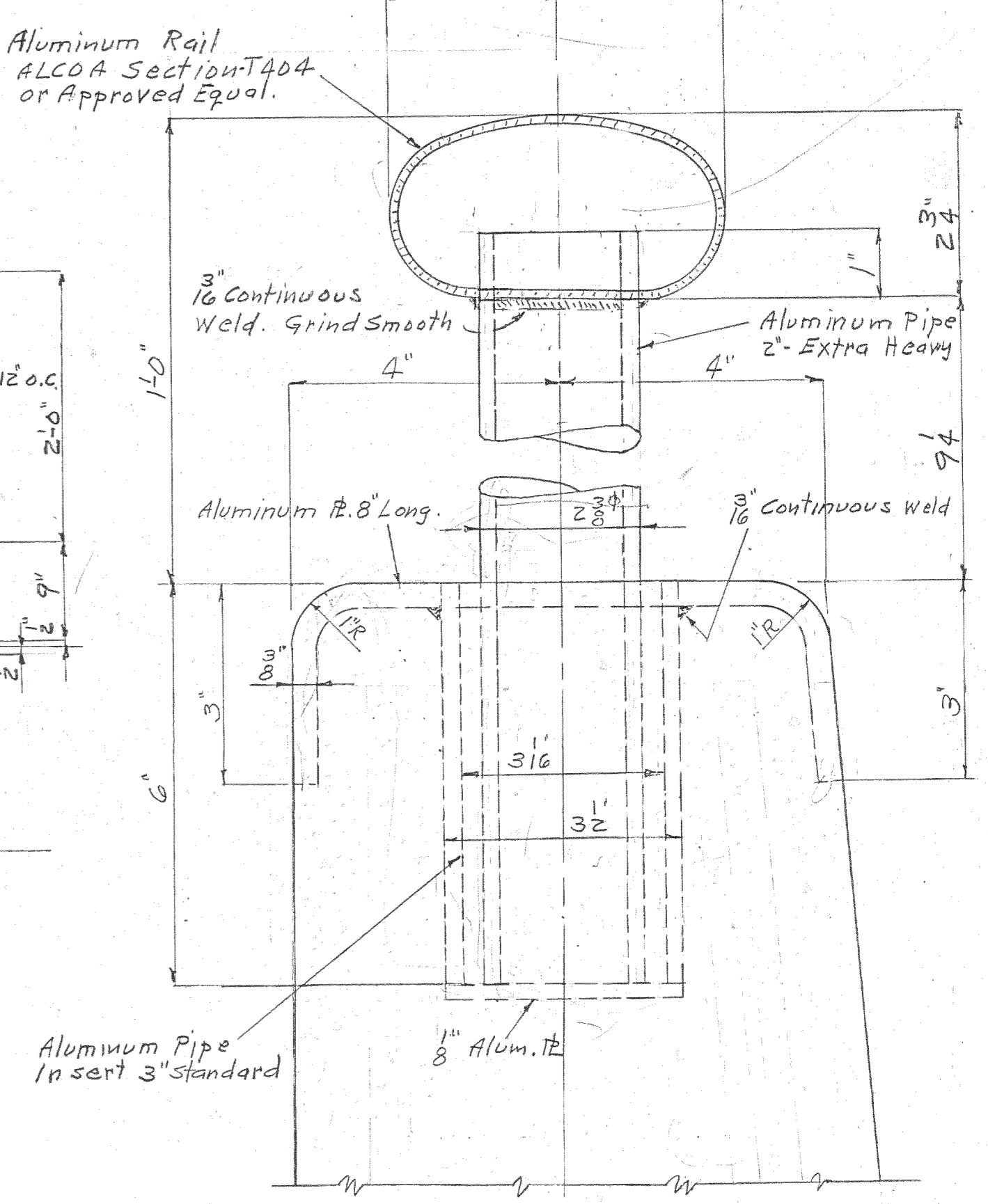
Plan T-T
 Showing Top Horizontal Bars.
 Scale 1/2" = 1'-0"



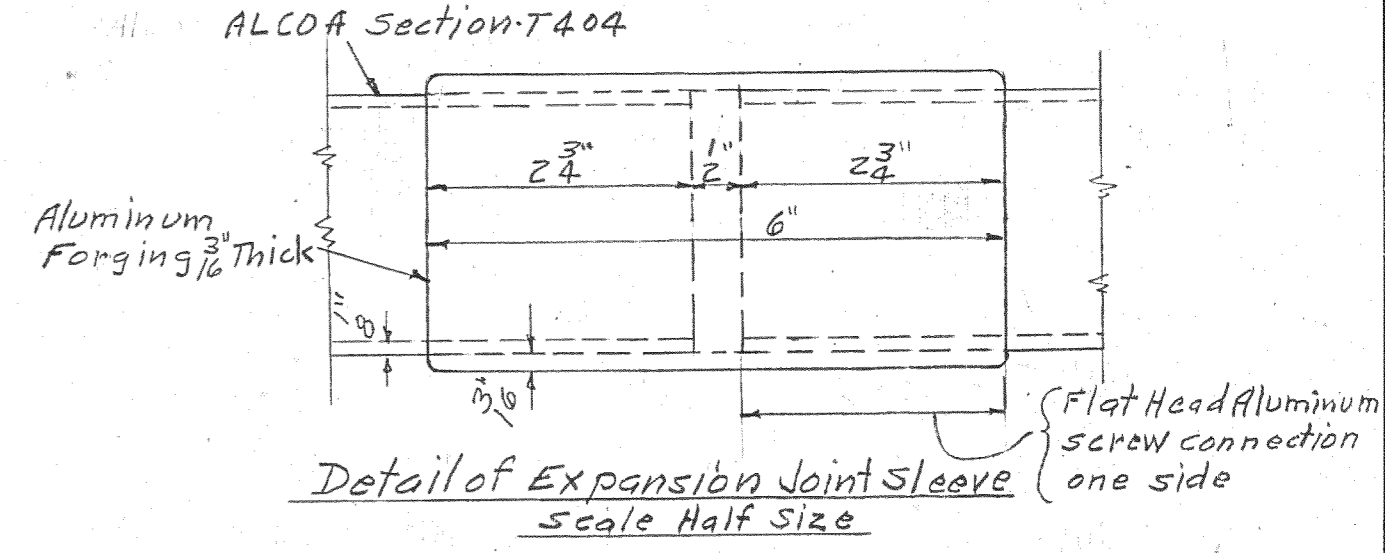
Section F-F
 Scale 1/2" = 1'-0"



Section G-G
 Scale 1/2" = 1'-0"

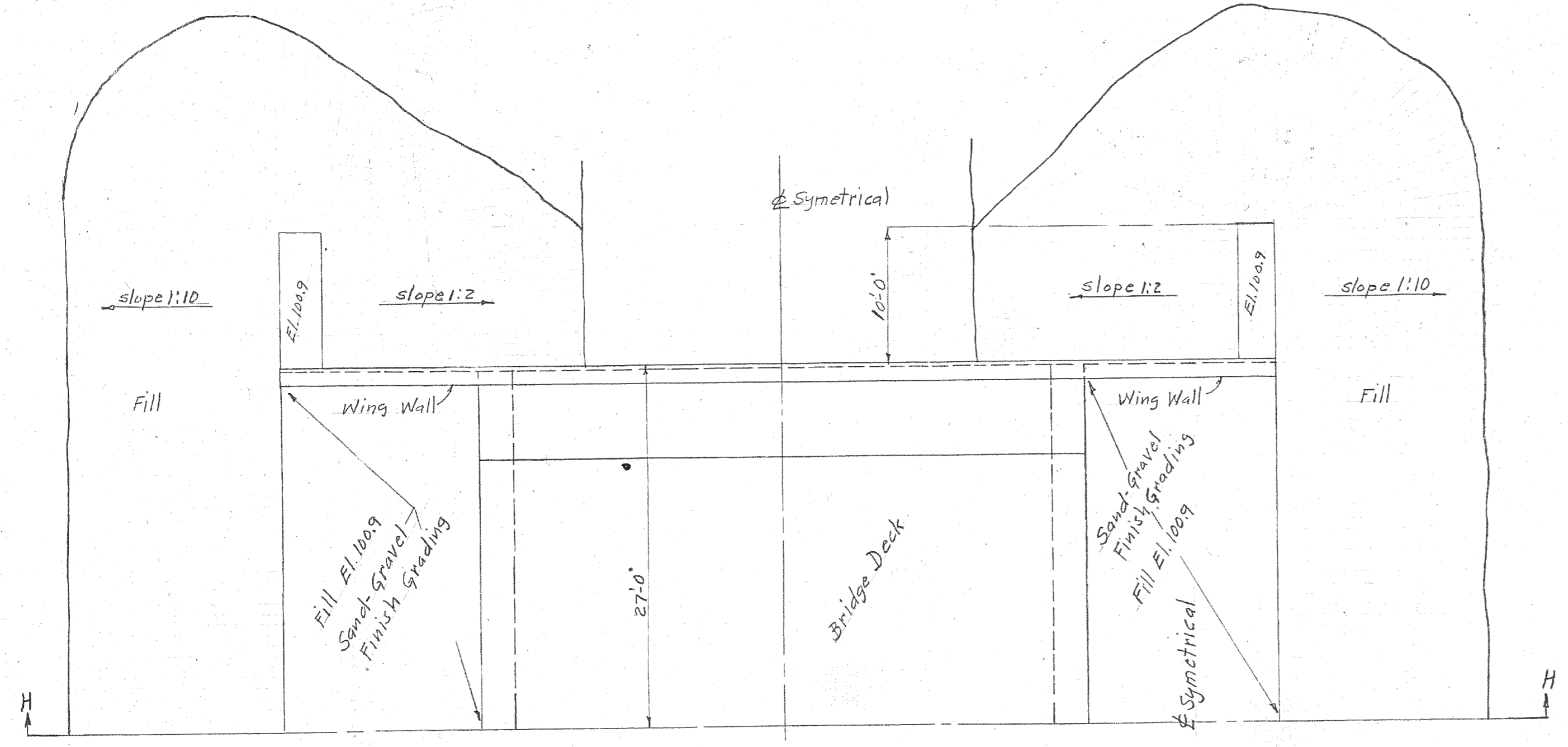


Detail of Aluminum Rail
 Scale: Half Size

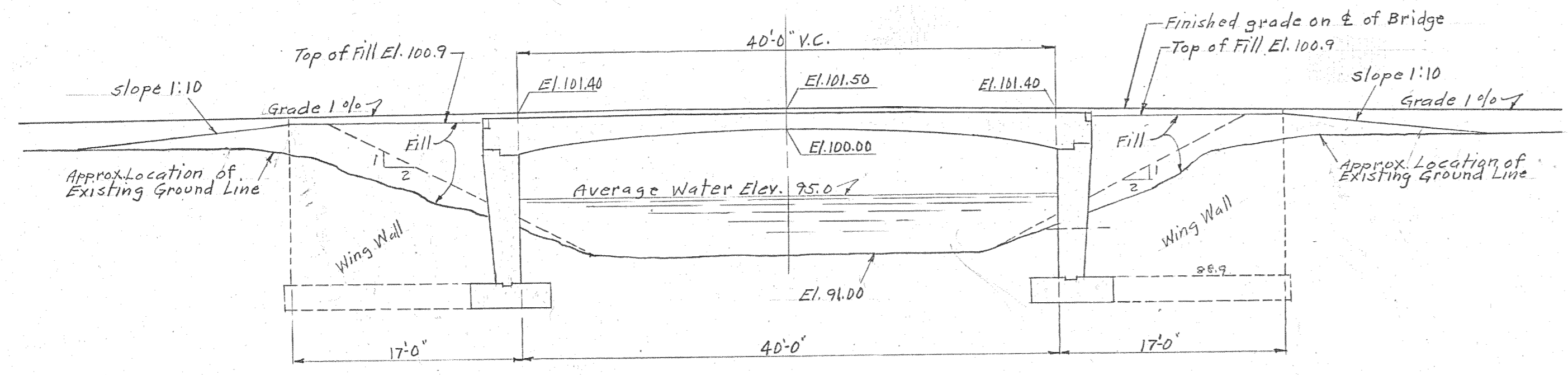


Detail of Expansion Joint Sleeve
 Scale Half Size

Note:
 Asphalt pavement on bridge is not included in this Contract. Existing ground lines, channel bottom and lines indicating where fill slopes meet the existing ground surface are only rough approximations. This plan of backfill and Section H-H are intended only to indicate the top elevations of the backfill and the final slopes that will be required upon completion of the structure. The Contractor shall make his own determination of the amount of fill required to meet existing ground surfaces.

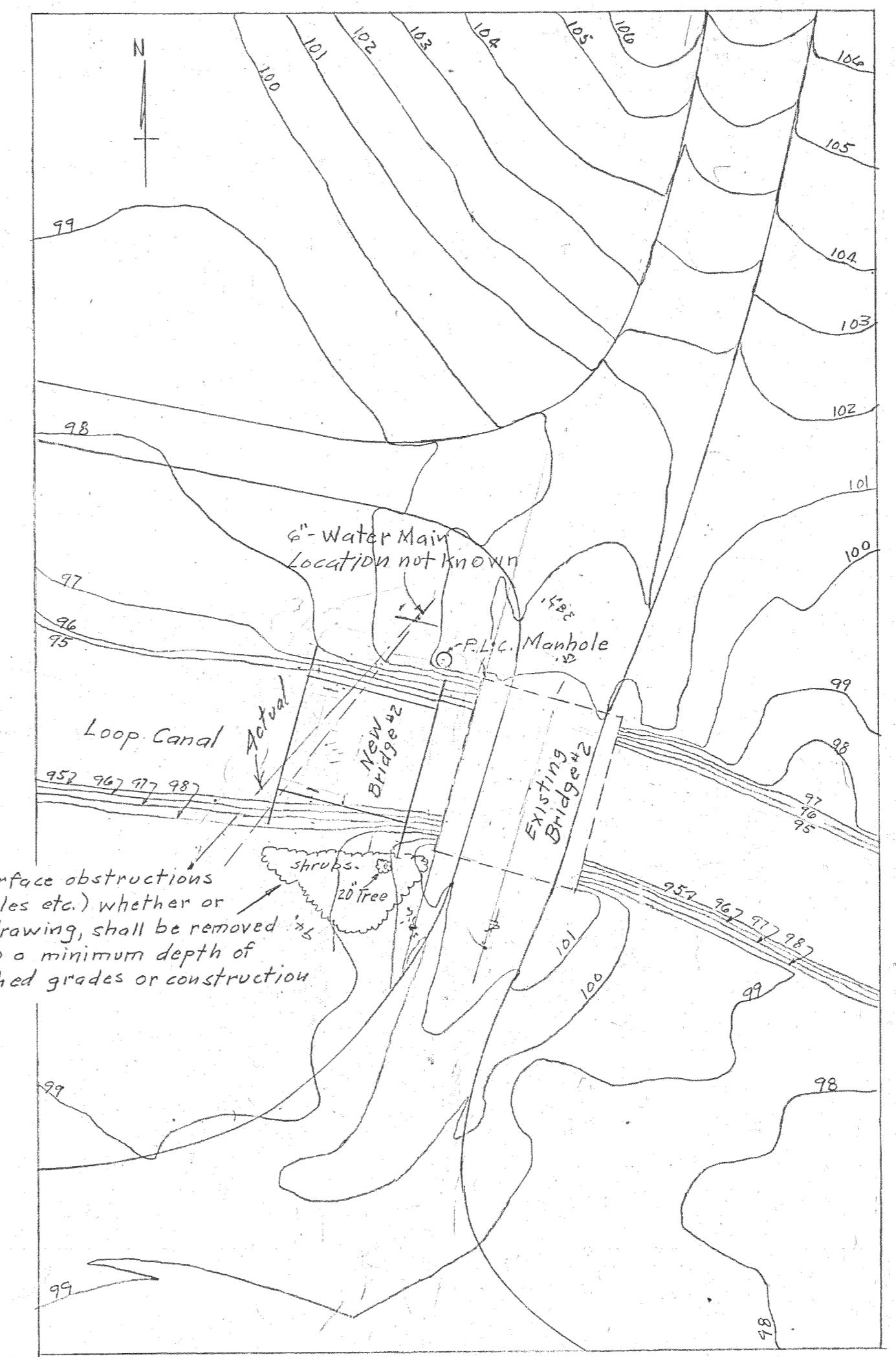


Half Plan of Bridge showing Backfill
 Scale 1/8" = 1'-0"

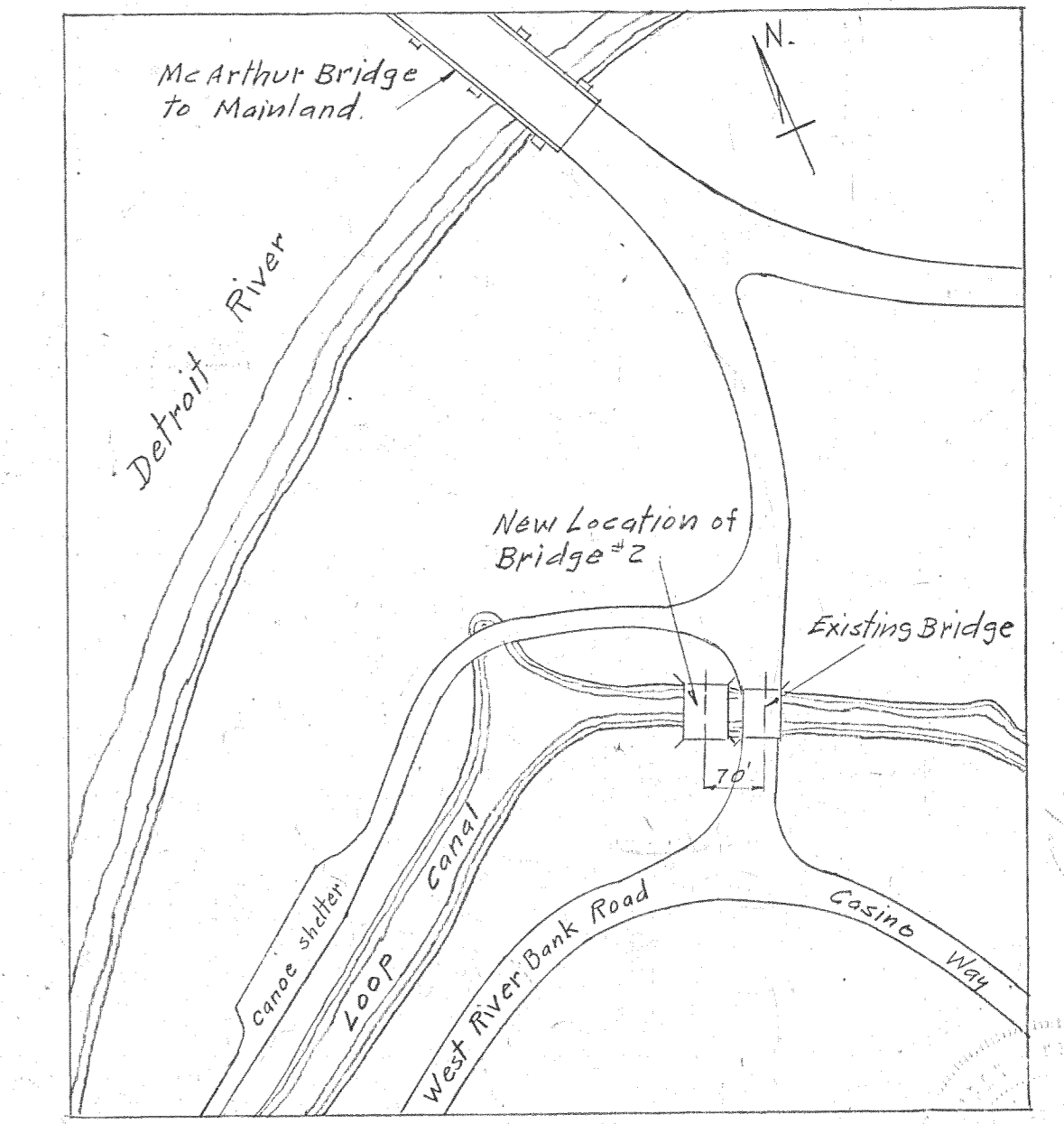


Section H-H
 Scale 3/8" = 1'-0"

Note: All surface or subsurface obstructions (trees, shrubs, manholes etc.) whether or not shown on this drawing, shall be removed by the Contractor to a minimum depth of two feet below finished grades or construction grades.



Contour Map of Bridge Site
 Scale 1" = 50'



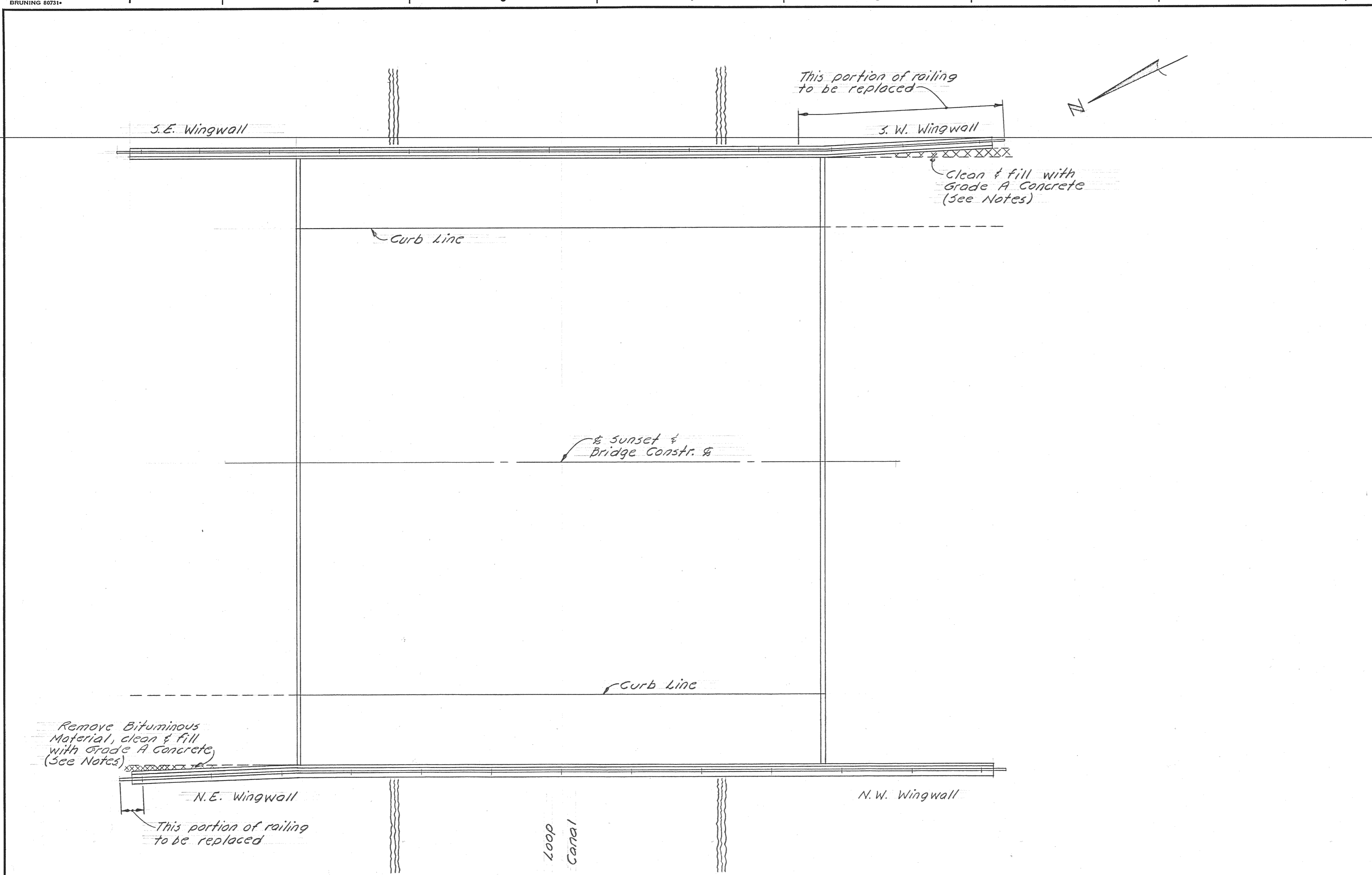
Location Plan Bridge #2
 Scale 1" = 200'

DESIGNED BY	RETHPACK	APPROVED:	J. L. Barton
DRAWN BY	RETHPACK	SR. ASST. STRUCT. ENGINEER	W. Wallace
TRACED BY	RETHPACK	ENGINEER OF DESIGN	Martin R. Fisher
CHECKED BY	A. Chan	ASST. CITY ENGINEER	
REFERENCE DRAWINGS			
NOTED BY			
DESCRIPTION	OWN	CHKD	APVD
REVISIONS			

CITY OF DETROIT
 DEPARTMENT OF PUBLIC WORKS
 CITY ENGINEERS OFFICE
 BUREAU OF DESIGN

BELLE ISLE BRIDGES
 BRIDGE NO. 2
 RAILING AND BACKFILL

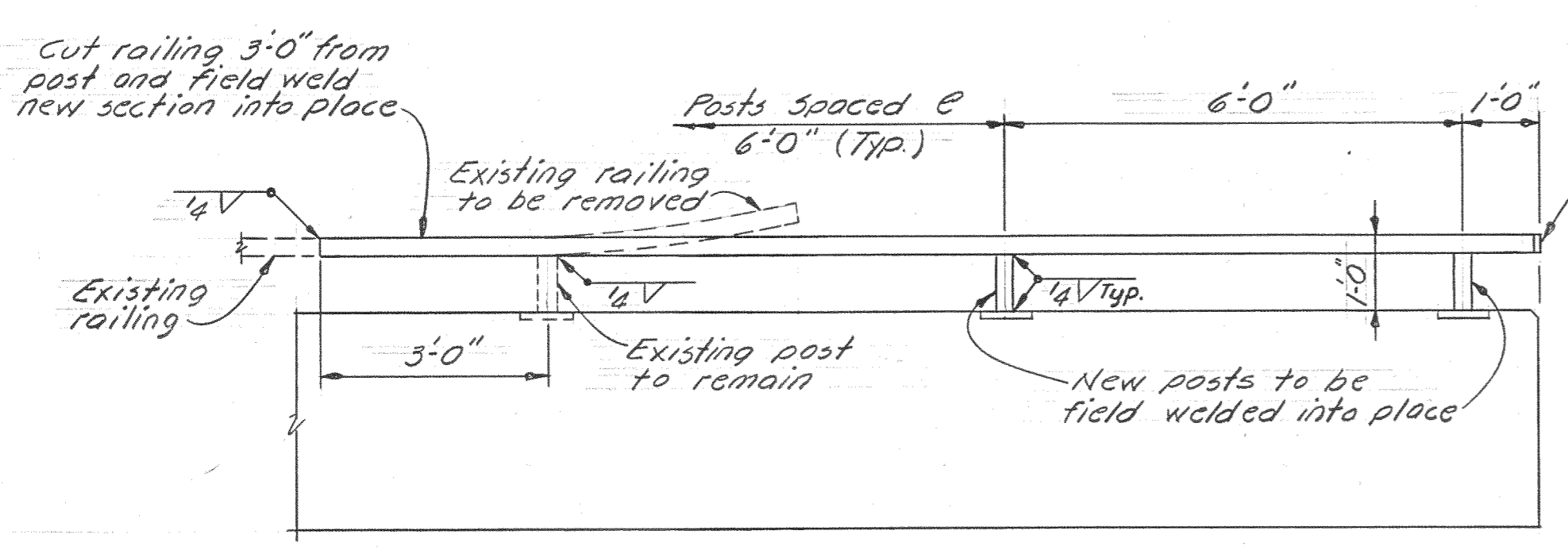
SHEET 4 OF 4 SHEETS
 JOB NO. PW-75
 DRWG No. S-3
 DATE MAY 1946



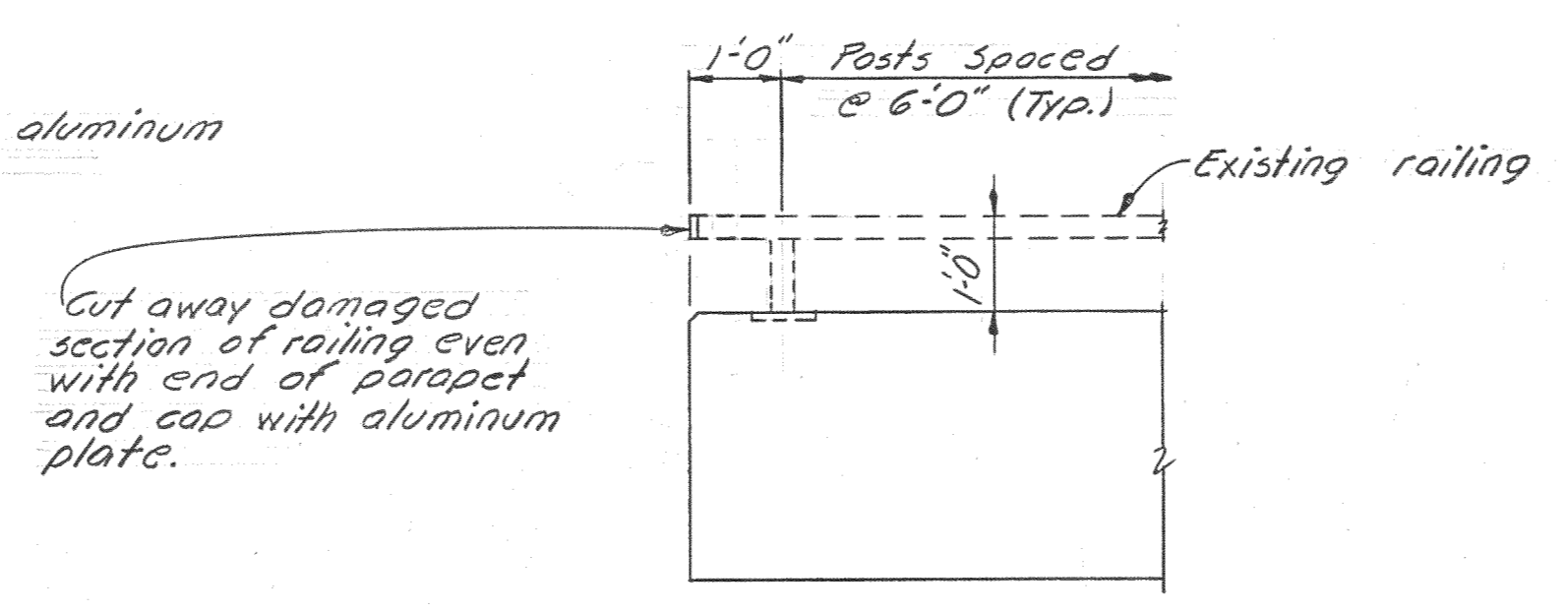
PLAN

GENERAL NOTES:

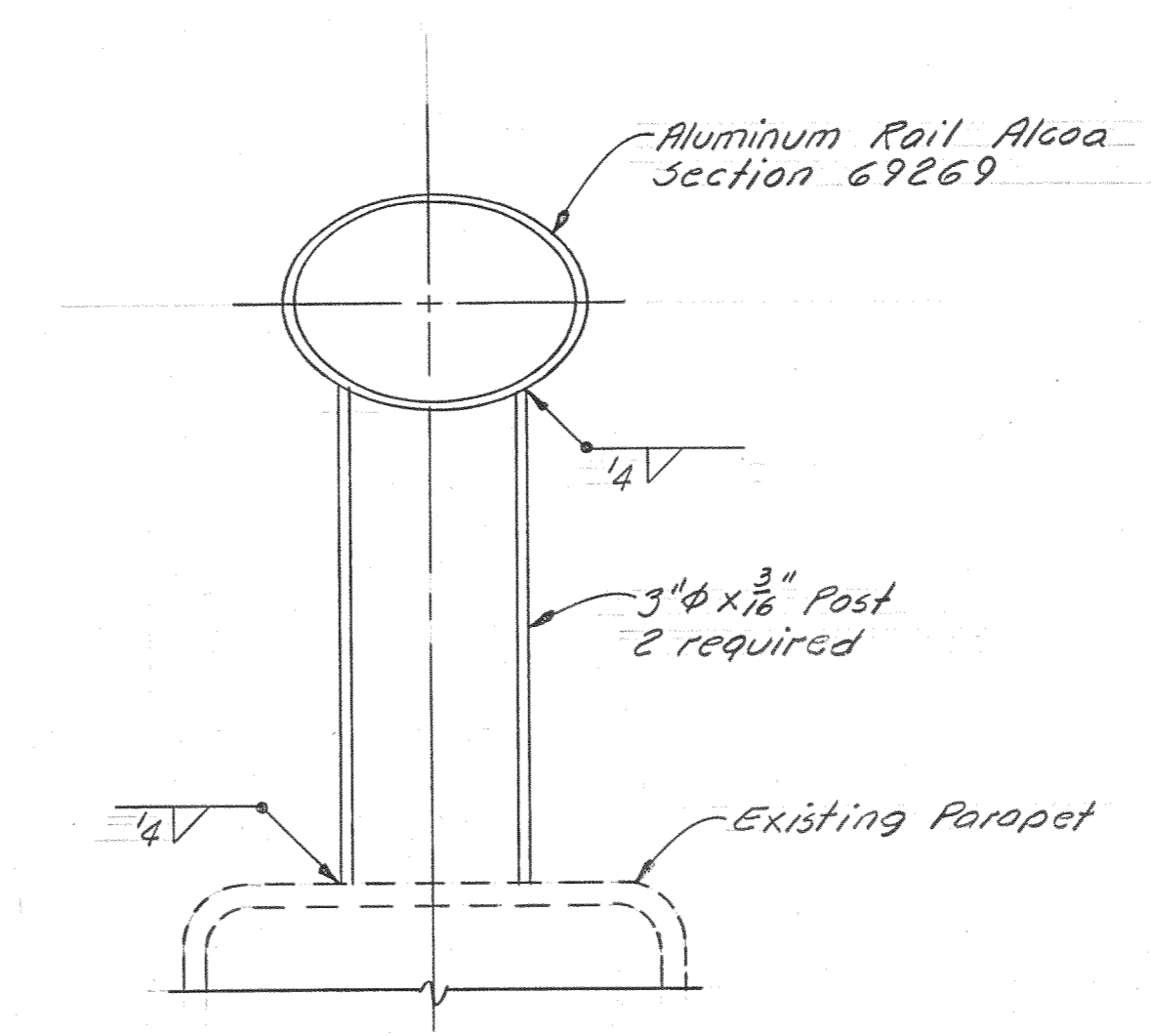
- Remove any debris between the N.E. & S.W. Wingwalls and their respective sidewalks.
- Relocate the wall parapets on the wingwalls to their original positions or as near as possible. Fill any remaining cracks with Grade A Concrete.
- Remove the damaged section of railing on the N.E. Wingwall flush with the end of the parapet and cap with an aluminum plate.
- Cut off the damaged section of railing on the S.W. Wingwall 16 feet from the end of the parapet. Leave the railing post under this damaged section in place. Field weld new section into place and cap with an aluminum plate.
- Repair spalled or cracked concrete by epoxy-bonding a high-strength concrete. Thoroughly clean all areas to be patched to remove all loose concrete, dust, etc. Apply bonding agent such as Sika Colma Fix as per manufacturer's recommendations. Fill cracks with high-strength concrete within the contact time of the resin. Cure in accordance with the requirements of the resin and concrete.



RAILING ELEVATION
S.W. Wingwall



RAILING ELEVATION
N.E. Wingwall



SECTION THRU
RAILING POST

<p>REVISIONS LOCATED BY COORDINATES ON SHEET</p> <table border="1"> <thead> <tr> <th>COORD</th> <th>DESCRIPTION</th> <th>DRN</th> <th>CKD</th> <th>APVD</th> <th>DATE</th> </tr> </thead> <tbody> <tr> <td> </td> <td> </td> <td> </td> <td> </td> <td> </td> <td> </td> </tr> </tbody> </table>										COORD	DESCRIPTION	DRN	CKD	APVD	DATE							<p>REFERENCE DRAWINGS</p>	<p>DESIGNED BY</p>	<p>APPROVED:</p>	<p>CITY OF DETROIT DEPARTMENT OF PUBLIC WORKS CITY ENGINEERS OFFICE FOR DEPARTMENT OF PUBLIC WORKS</p>			<p>BW 202 SUNSET DR. OVER LOOP CANAL ON BELLE ISLE</p> <p>PARAPET AND RAILING REPAIR</p>			<p>SHEET 1 OF 1 SHEETS</p>
COORD	DESCRIPTION	DRN	CKD	APVD	DATE																										
<p>DRAWN BY A.G.</p>		<p>CITY ENGINEER</p>		<p>CONTRACT No.</p>																											
<p>TRACED BY</p>		<p>CITY ENGINEER</p>		<p>DRWG No.</p>																											
<p>CHECKED BY J. Mc Guire</p>		<p>CITY ENGINEER</p>		<p>DATE NOV. 1971</p>																											