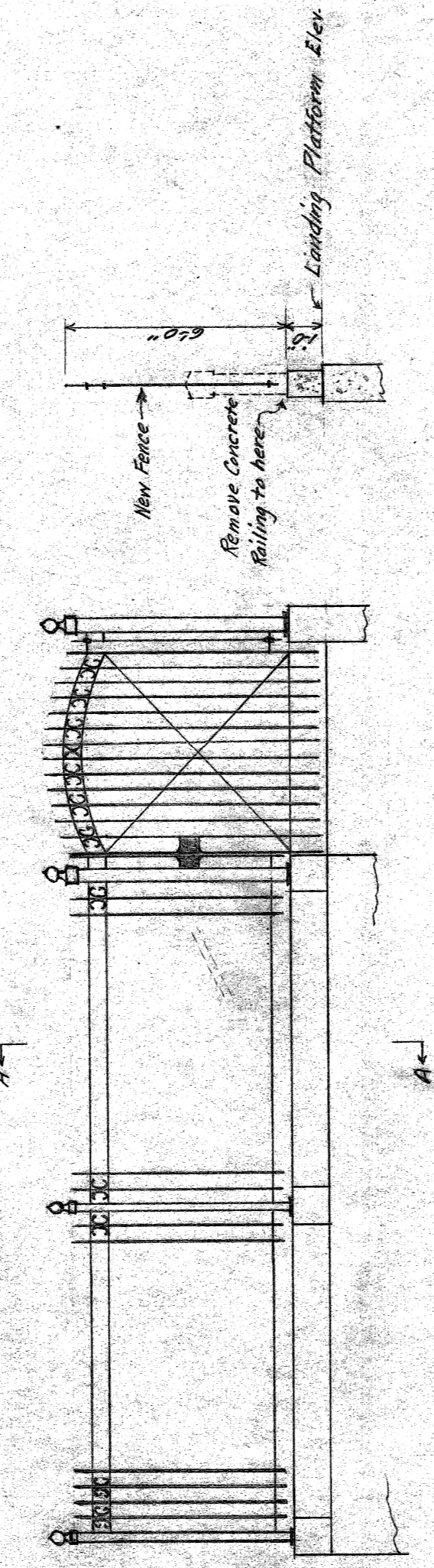


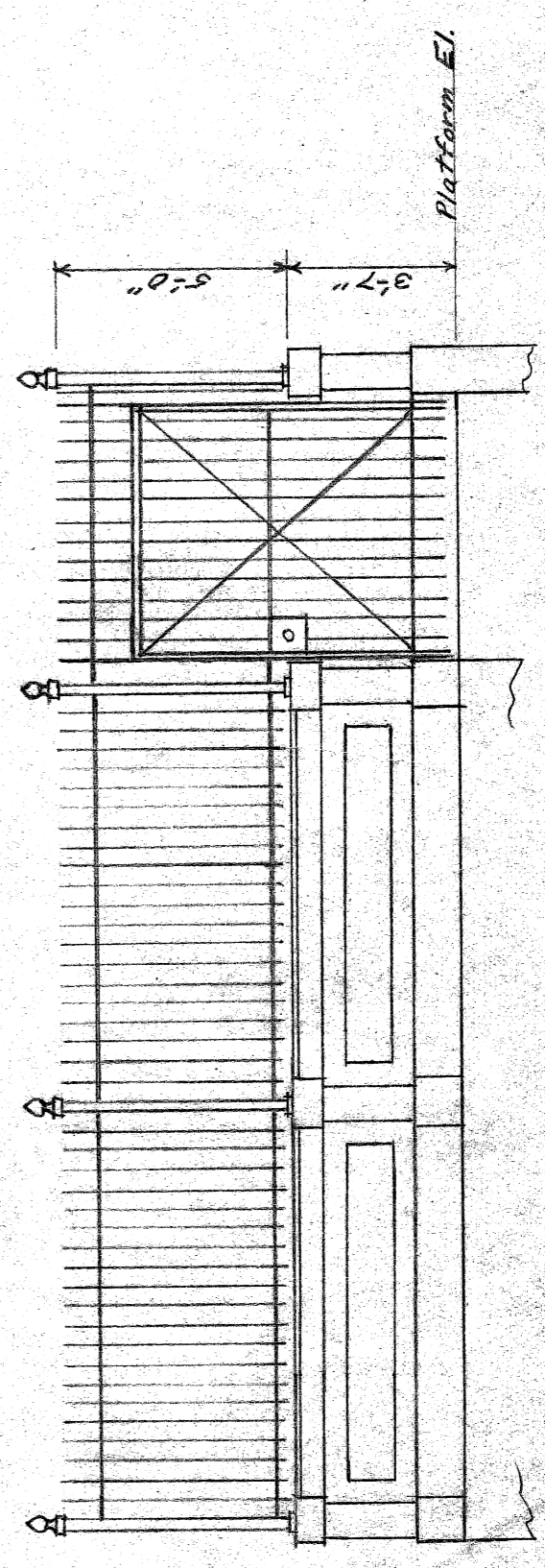
PLAN



ELEVATION

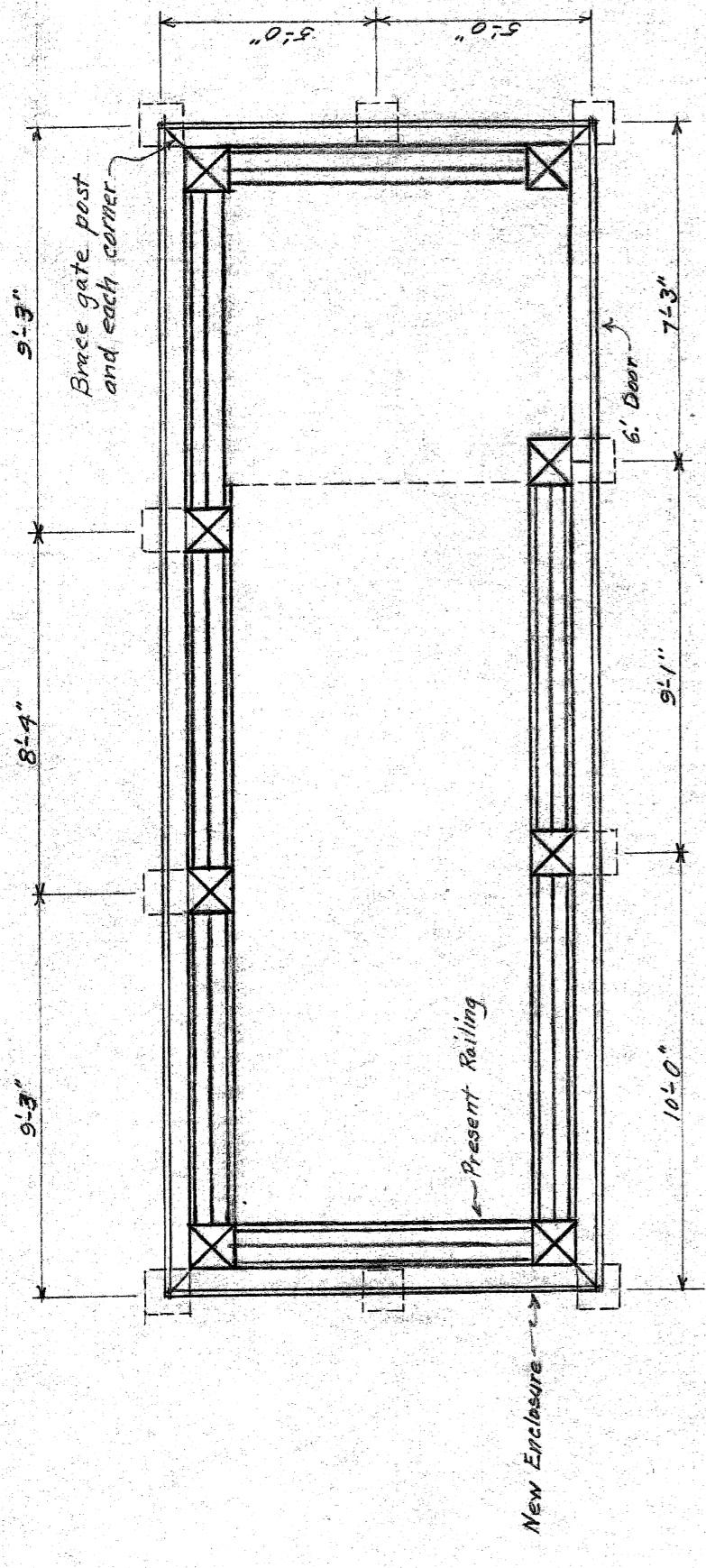
SECT. A-A

SCHEME - "A"

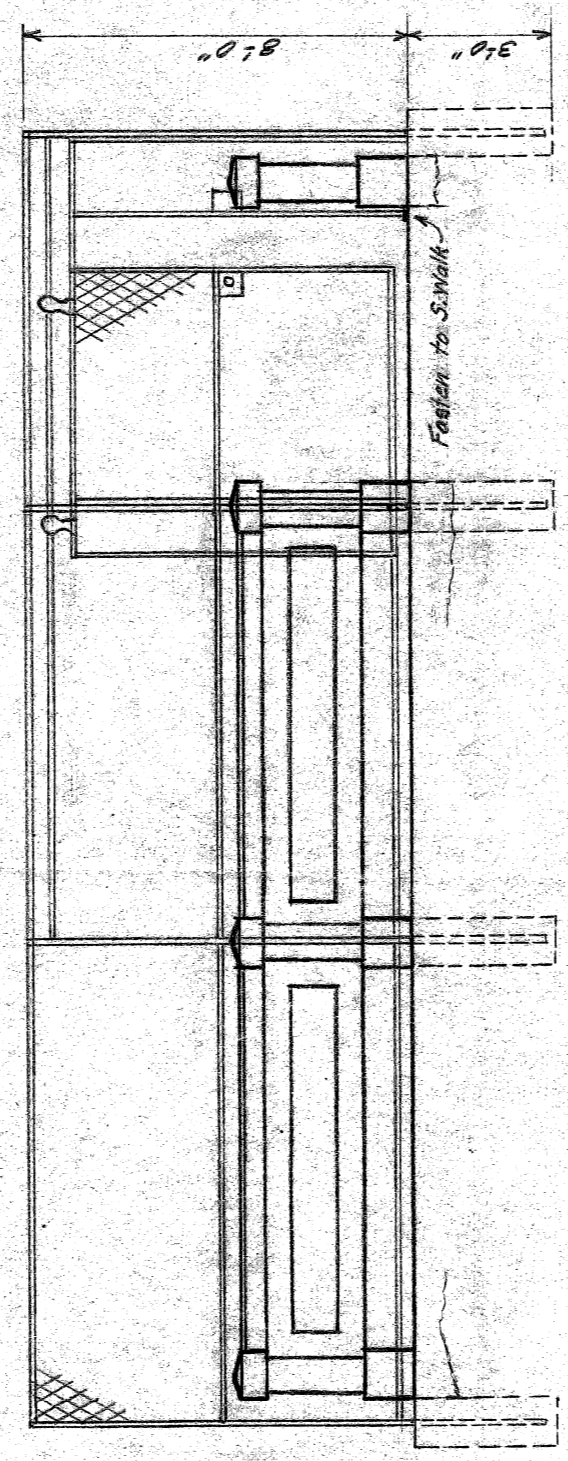


ELEVATION

SCHEME - "C"

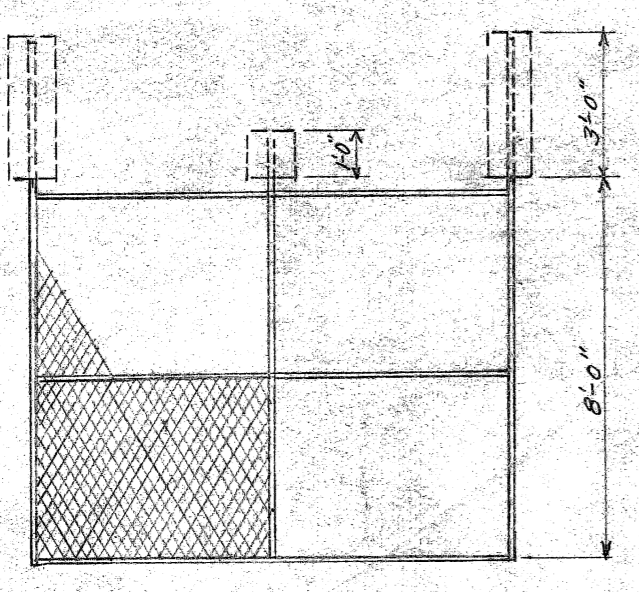


PLAN



FRONT ELEVATION

SCHEME - "B"



SIDE ELEVATION

SUMMARY OF PRICE ESTIMATES.

| | |
|---|------------|
| Scheme "A" - 2 entrances | - \$475.00 |
| Scheme "B" - 2 " | - 275.00 |
| Scheme using "A" for west and "B" for east entrance | - 375.00 |
| Scheme "C" - 2 entrances | - 350.00 |
| Scheme "C" - 2 " using "A" type fence | - 400.00 |

CITY OF DETROIT
 DEPARTMENT OF PUBLIC WORKS
 OFFICE OF CITY ENGINEER
 DIVISION OF GRADE SEPIV & BRIDGES
 CASS AVE. PEDESTRIAN SUBWAY
 AT PETERBORO ST.

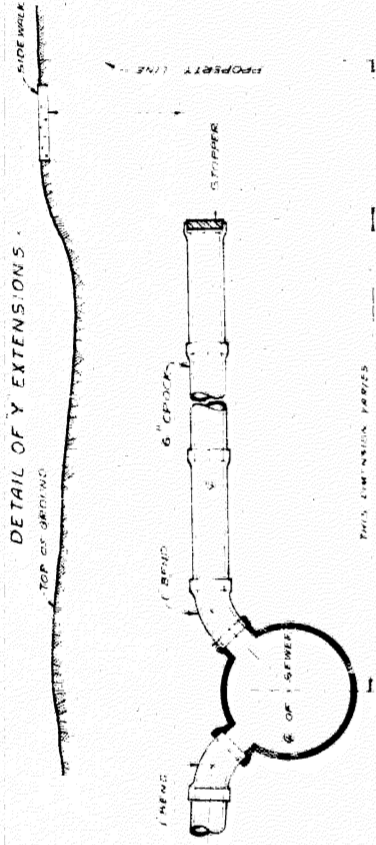
ENTRANCE RAILINGS REBUILD - 9/1930
 Scale: 1/4" = 1'-0"
 Drawn by J.P.
 Checked by

BT 64
 File

SEWER DRAINING

PEDESTRIAN TUNNEL UNDER CASS AT PETERBORO DETAILS

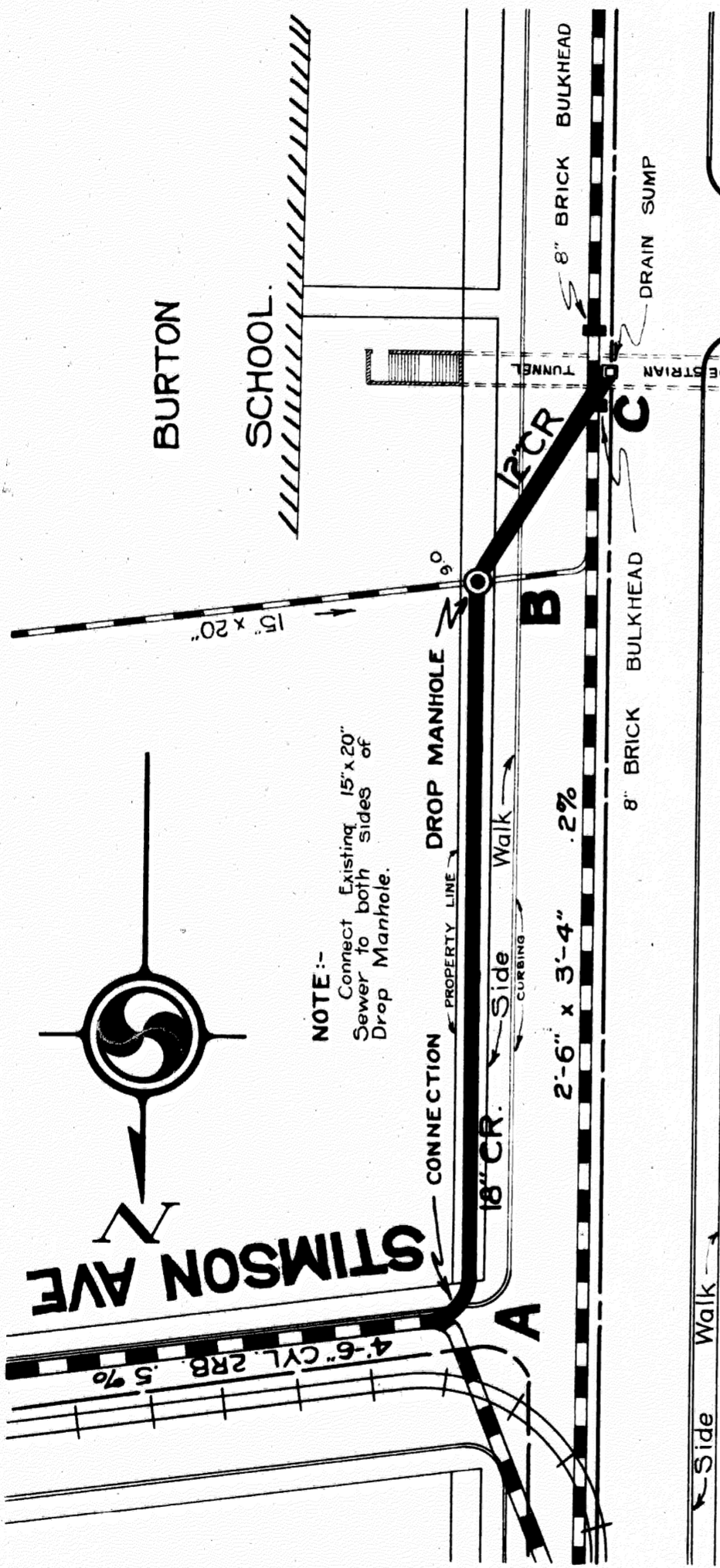
TOTAL LENGTH OF SEWER _____ FT. M. OR L.



DEPARTMENT OF PUBLIC WORKS
CITY ENGINEER'S OFFICE
DETROIT, MICH.

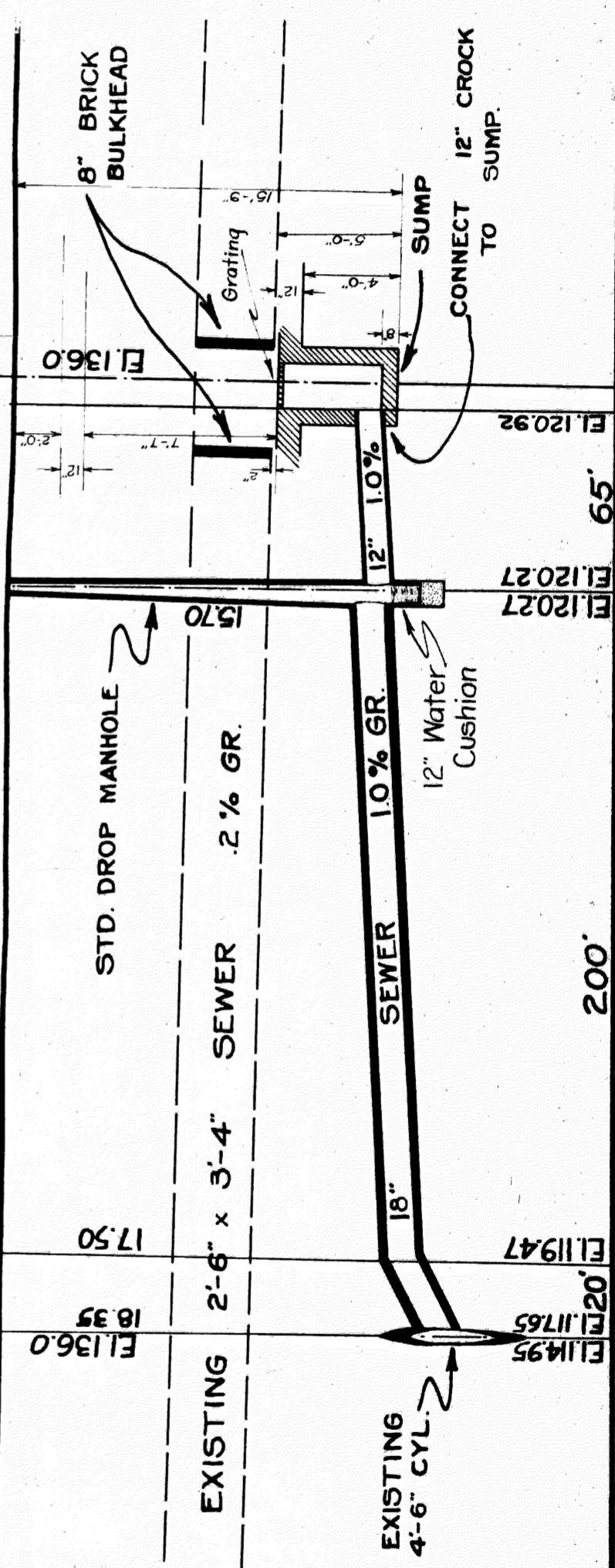
SEWER No. 4907
ROLL No. ARM

PETITION No. _____
PETITION DATE _____
RESOLUTION _____
BIDS OPENED _____
CONTRACT CONF'D _____
COMPLETED _____
CONTR _____



CASS AVE

Ground Elev. = 136.00



NOTE--Contractor to furnish and set as markers for all connections 1/2 inch iron rods 2 feet long with 3 inch tile collar 6 inches long.

IMPORTANT NOTICE--The location of all public utilities are taken from best available data. City is not responsible for variations from locations shown. Sidewalks, pavements, and other existing surface and underground public utilities, whether shown on drawings or not, must be adequately protected, and when damaged the contractor must restore them to their original status. Water mains and water service pipes if damaged, are to be repaired in a manner to meet the requirements of the Water Board. Where sewer is to be built in tunnel under pavement, the backfill must be of Class "C" concrete. Each bidder is expected to make his estimates of the facilities and difficulties attending the execution of the work, to do all necessary pumping and build or remove bulkheads when directed by City Engineer. All above costs to be borne by Contractor.

| SCALE | | DRAWN | | H.W.S. | | CHECK | |
|---------------------|--|--------|--|--------|--|-----------|--|
| VERTICAL 1" = 6' | | DRAWN | | L.M.H. | | CHECK | |
| HORIZONTAL 1" = 40' | | TRACED | | L.H.H. | | NOTE BOOK | |

File 1

