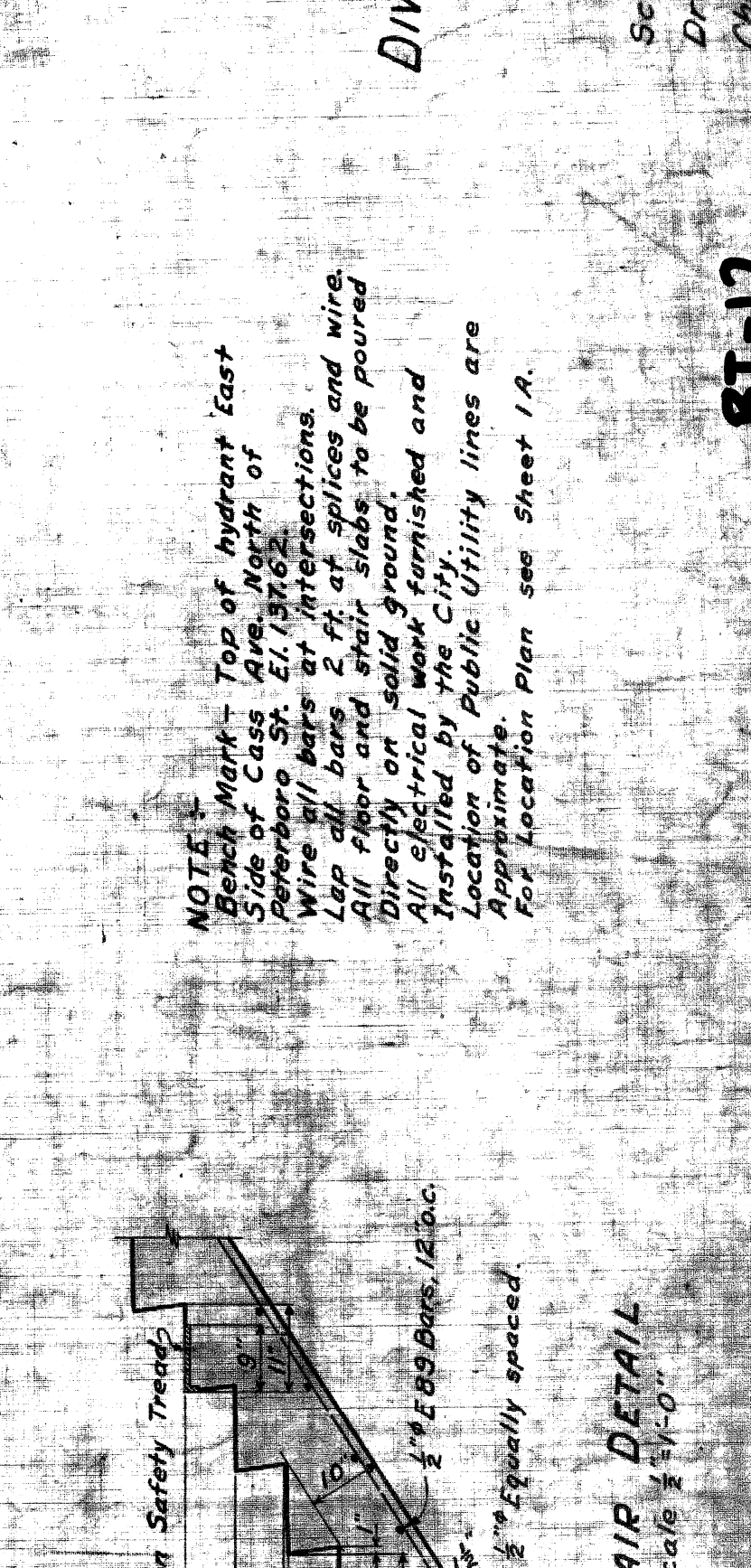


BILL OF REINFORCING BARS

No.	Size	Length	Mark	Location
104	3/4"	24'-0"	F240	Main Section, Longitudinal
326	3/4"	8'-9"	C89	Main Sect., Transverse Top & Bottom
326	3/4"	2'-0"	E20	Stairway Walls - Vertical
8	3/4"	5'-0"	E36	Stairway Walls - Vertical
8	3/4"	5'-0"	E50	"
16	3/4"	6'-0"	E60	"
16	3/4"	7'-0"	E70	"
16	3/4"	8'-0"	E80	"
16	3/4"	9'-6"	E96	"
16	3/4"	10'-6"	E106	"
8	3/4"	16'-0"	F160	Horizontal
4	3/4"	13'-6"	F136	"
4	3/4"	8'-0"	F80	"
4	3/4"	6'-0"	F60	"
12	10"	10'-6"	F106	Stairways - Longitudinal
12	10"	4'-0"	F40	"
12	10"	9'-6"	F96	"
46	3/4"	8'-9"	F89	Transverse
180	3/4"	3'-6"	F36	Railing and Posts - Vertical
180	3/4"	3'-6"	F30	Vert. Dowels
16	3/4"	18'-9"	F89	"
32	3/4"	8'-6"	F86	"

CITY OF DETROIT
 DEPARTMENT OF PUBLIC WORKS
 OFFICE OF CITY ENGINEER
 DIVISION OF GRADE SEPARATION & BRIDGES
CASS AVE PEDESTRIAN SUBWAY AT PETERBORO ST.

Scale - As Shown
 Drawn by J.T.M.
 Checked by
 June 23, 1927
 Revised 7-19-27
 Sheet 1



City of Detroit

INTER-OFFICE CORRESPONDENCE

TO: J. J. COVERT

DATE 1-14-74

FROM: T. E. MCGOWAN

SUBJECT: BT 12 - PETERBORO TUNNEL

THE SITE WAS INSPECTED 1-14-74 WITH REPRESENTATIVES FROM STREET MAINT. TUNNEL IS STRUCTURALLY SOUND. RECOMMENDATIONS FOR TUNNEL CLOSURE:

1. DISCONNECT ELECTRICAL.
2. PLUG DRAIN.
3. 12" MASONRY WALLS AT BASE OF STEPS (INSTALL).
4. REMOVE CONCRETE WALLS TO 1'-0" BELOW GRADE.
5. BACKFILL WITH SAND.
6. 5" CONCRETE SIDEWALK - WEST SIDE
7. 5" ASPHALT PAVING - EAST SIDE

TOTAL ESTIMATED COST: \$ 6,000

T. E. McGowan
S. E.