

Nathan Levine & Associates Inc.
 26600 Telegraph Road
 Suite 309
 Southfield, Mich. 48076
 Phone 313 358 3400



architecture
 environmental planning
 merchandising
 graphics

project

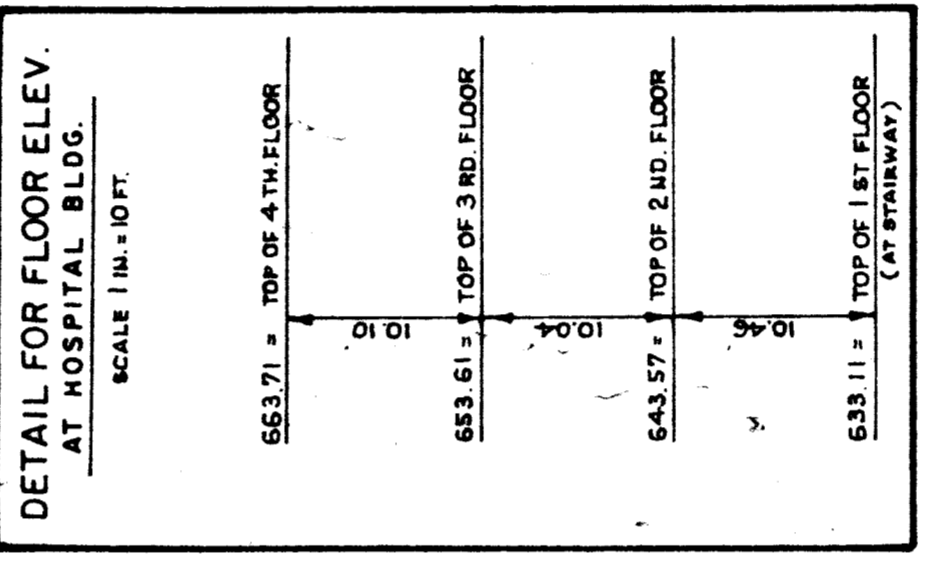
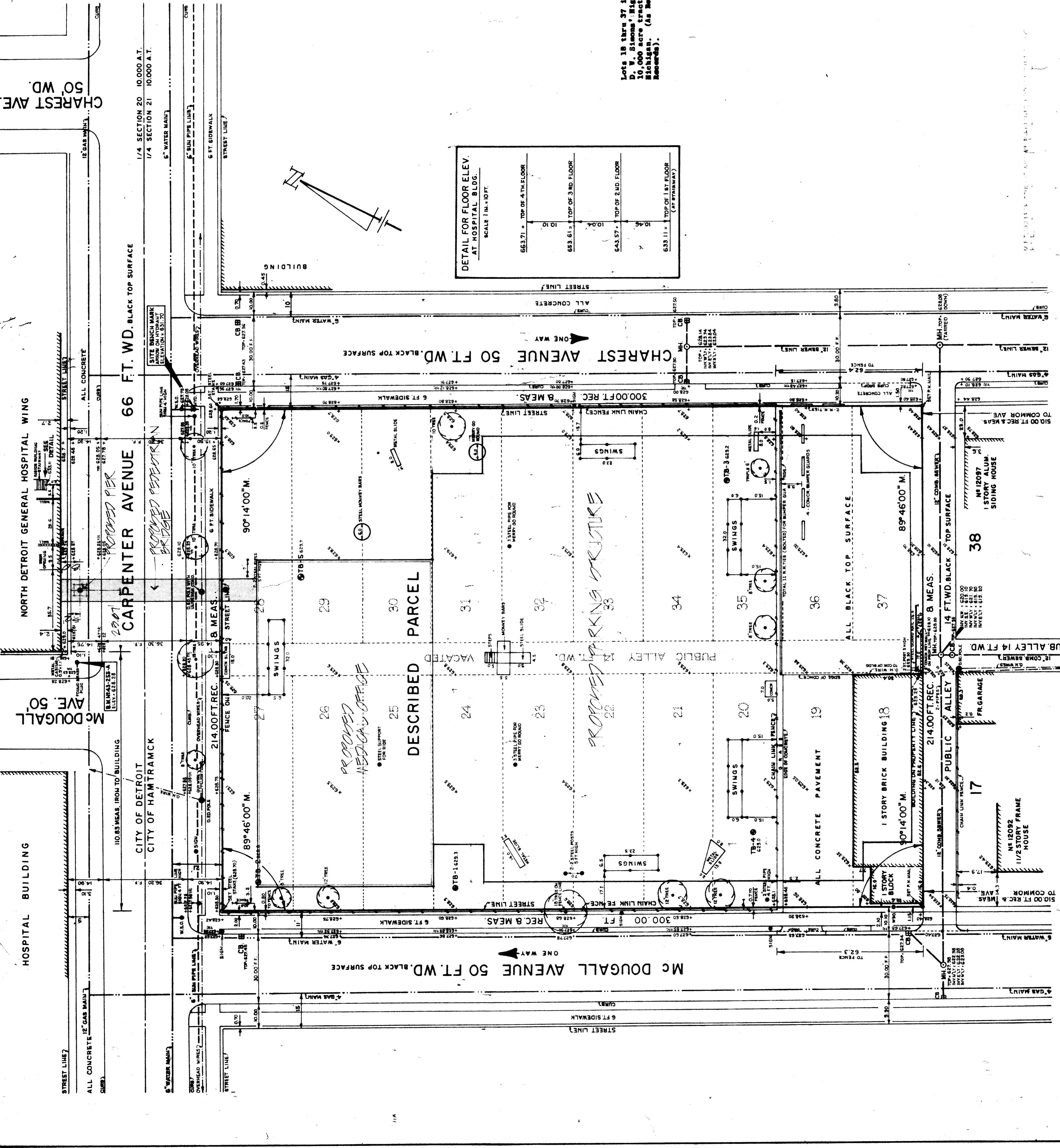
CARPENTER MEDICAL PLAZA

NORTH DETROIT GENERAL HOSPITAL
 HAMTRAC, MICHIGAN

SITE SURVEY
 SCALE: 1"=20'-0"

issued for:
 O preliminary
 ● construction
 (V.L.P. 1982)
 drawn MASON BROWN, INC.
 checked
 approved
 revisions

job sheet
 \$2.05



Clarance Sign?
NOT REAR?

LEGAL DESCRIPTION

Lots 18 thru 37 inclusive and vacated alley adjacent thereto, Block 10 D. W. Simons' Highland Subdivision being the West half of Sec. 17, 10,000 acre tract, T. 1 S., R. 12 E., 4th Principal Meridian, Wayne County, Michigan. (As recorded in Liber 11 of Plans, Page 46, Wayne County Records).



NOTE:
 UNDERGROUND UTILITIES AS SHOWN INDICATE APPROXIMATE LOCATIONS OF UTILITIES ONLY, AS DISCLOSED BY THE MUNICIPAL RECORDS AND OF THE VACATED ALLEYS AS SHOWN. THE SURVEYOR HAS NOT MADE ANY EXCAVATIONS TO VERIFY THE COMPLETENESS OR ACCURACY THEREOF. BUILDING PLANS MADE SUBSEQUENT TO THIS DATE SHOULD BE CHECKED WITH THE UTILITY COMPANIES CONCERNED BEFORE CONSTRUCTION BEGINS.

Since our survey work does not include a title search, there may be easements or other encumbrances on the land which are not shown on our plan. If such encumbrances are required, please furnish the necessary information.

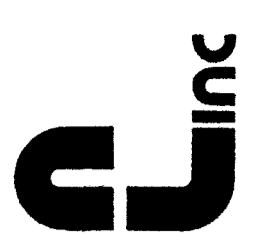
WE HEREBY CERTIFY THAT WE HAVE SURVEYED THE HEREON SHOWN LOTS AND ALLEYS AND THAT THE MEASUREMENTS AS SHOWN ON THIS PLAN ARE CORRECT.
MASON L. BROWN & SON, INC.
 BY: *Mason L. Brown*
 WILLIAM G. CARLSON, P.E.S. N.E.S. No. 14789

MASON L. BROWN & SON, INC.
 CIVIL ENGINEERS & SURVEYORS
 118 HADSDON AVENUE
 DETROIT, MICHIGAN 48226

SCALE: 1 in. = 20 FT.
 DATE: AUGUST 2, 1982
 JOB NO. S-38524
 SHEETS 1 OF 1

FOLDER NO. 1742

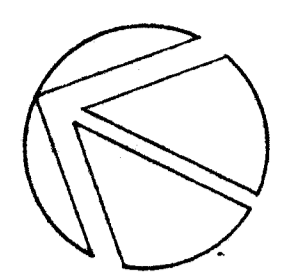
nathan levine &
 associates inc.
 26600 telegraph road
 suite 309
 southfield, mich. 48034
 phone 313-358 3400



architecture
 environmental planning
 merchandising
 graphics

project

**CARPENTER
 MEDICAL PLAZA**
 NORTH DETROIT GENERAL HOSPITAL
 HANTRAMCK, MICHIGAN



SITE PLAN
 SCALE 1" = 20' - 0"

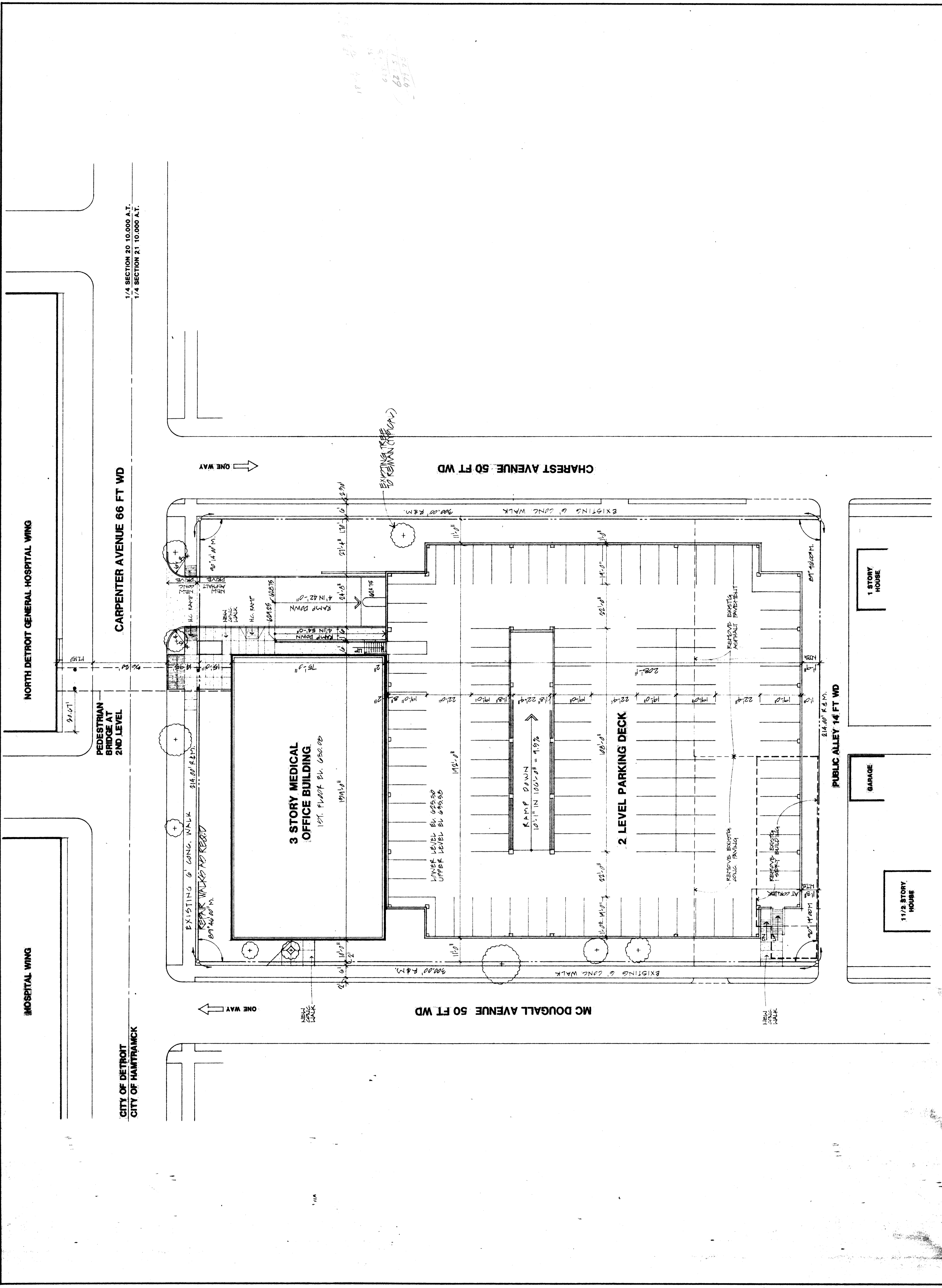
issued for
 O preliminary
 ● construction
 NOV. 1982
 drawn P.S.B., E.D.
 checked D.E.K., D.S.
 approved N.L.
 revisions

all ideas, designs, arrangements and plans in-
 cluded on this drawing are the property of the
 architects and engineers, and were created,
 evolved and developed for the use on, and in
 connection with, the project. No part of the
 plans shall be used by or disclosed to any
 person, firm or corporation for any purpose
 of the project architects and engineers.

job #2.05

sheet

SP-2



nathan Levine & associates inc.
 28600 telegraph road
 suite 309
 southfield, mich. 48034
 phone 313-388 3400



architecture
 environmental planning
 merchandising
 graphics

project
CARPENTER MEDICAL PLAZA
 NORTH DETROIT GENERAL HOSPITAL
 HANTRAMCK, MICHIGAN

CITY OF DETROIT
 CITY ENGINEERING DEPARTMENT
APPROVED
 FOR COMPLIANCE WITH CONTRACT No. *****
 HIS APPROVAL SHALL NOT RELIEVE THE CONTRACTOR OF ANY RESPONSIBILITY COVERED BY THE CONTRACT.
 DATE: 2-18-83 R. K.

RAY W. CONVEY & ASSOCIATES, INC.
 STRUCTURAL ENGINEERS
 17000 TWELVE MILE 313 297-8880
 SOUTHFIELD, MICHIGAN 48076

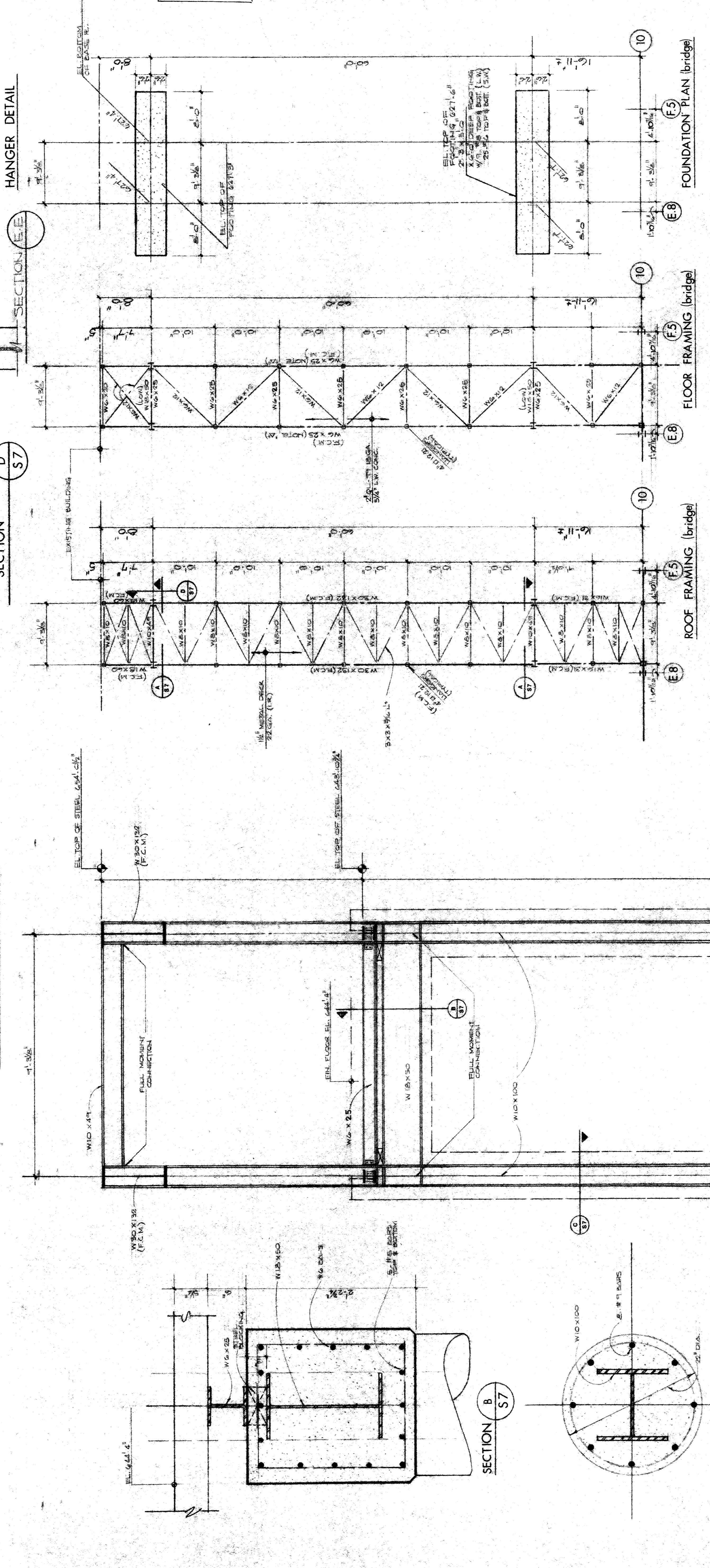
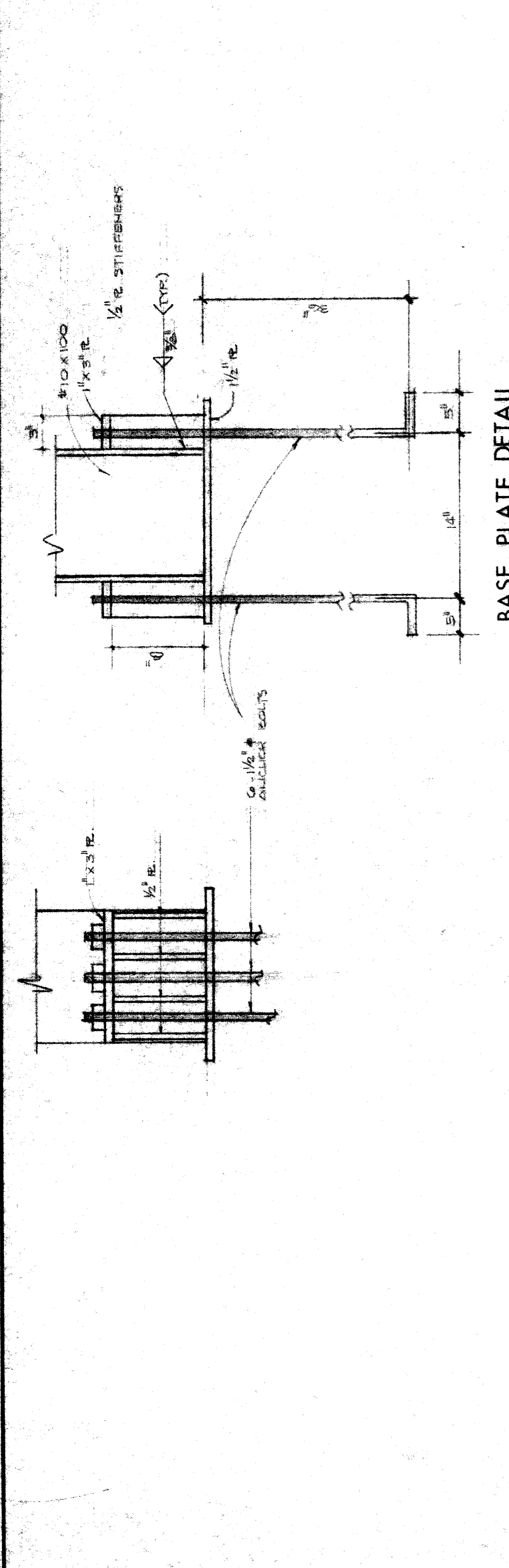
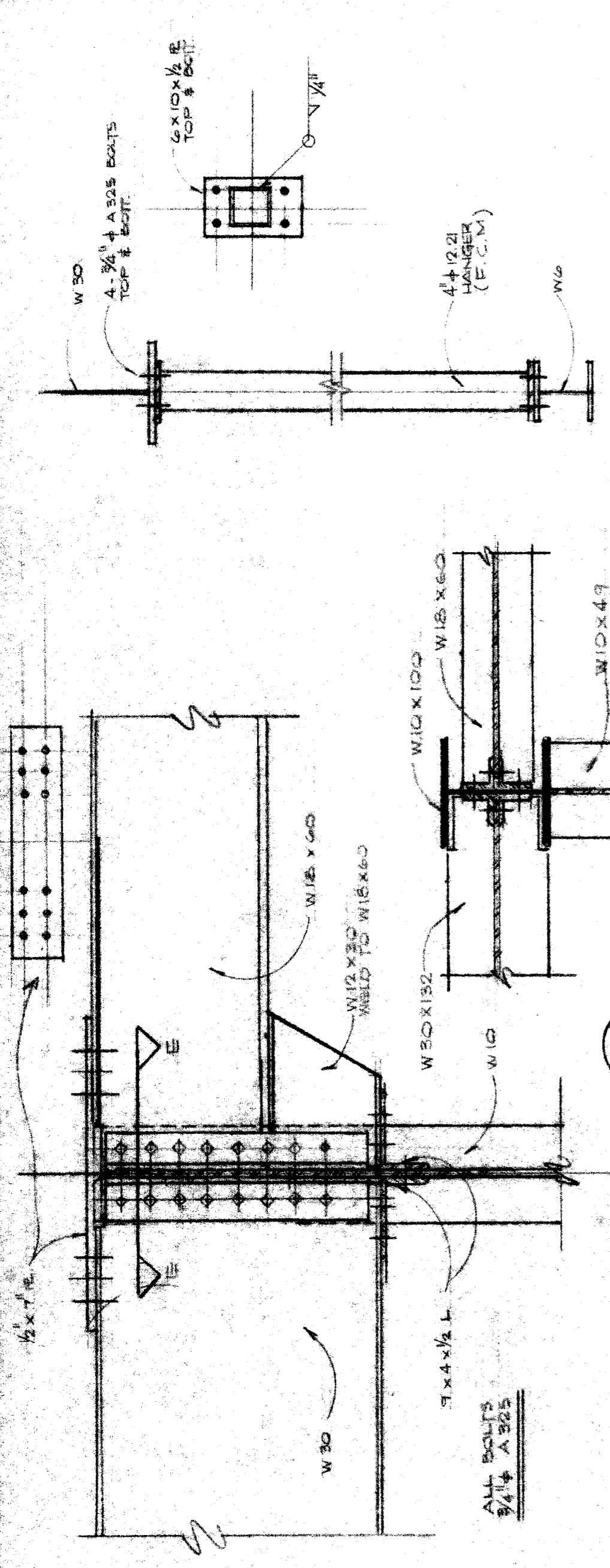
Issued for
 preliminary
 construction NOV. 15, 1982
 REV. #1 FEB. 2, 1983
 drawn
 checked
 approved
 revisions

All ideas, designs, arrangements and plans in this drawing are the property of the project engineer and shall remain confidential and shall not be used or reproduced in any form or by any means without the written permission of the project architect and engineer.

job 82-05

sheet

S-7



NOTES:

DESIGN CRITERIA:

LIVE LOAD FLOOR	= 100 P.S.F.
ROOF	= 30 P.S.F.
WIND LOAD TRANSVERSE	= 50 P.S.F.
LONGITUDINAL	= 12 P.S.F.

1. ALL REINFORCING SHALL BE ASTM A615 - GRADE 60.
 2. ALL CONCRETE SHALL BE 3500 P.S.F. AT 28 DAYS.
 3. ASSUME SOIL PRESSURE 4000 P.S.F. (CONTRACTOR TO VERIFY IN FIELD)
 4. ALL BOLTS SHALL BE A325.
 5. ALL FRACTURE CRITICAL MEMBER (F.C.M.) SHALL BE FABRICATED AND ERRECTED IN ACCORDANCE WITH AASHTO "BRIDGE SPECS.", FOR FRACTURE CRITICAL NON-REDUNDANT STEEL BRIDGE MEMBERS.

NOTE:
 PROVIDE 1" CAMBER IN W30 X 132.

NOTE:
 PROVIDE TENSION AND COMPRESSION SPLICE.

SECTION C S7

SECTION A S7

SECTION B S7

SECTION D S7

SECTION E E