

SIXTH STREET BRIDGE OVER JEFFERSON AVE. BH - 273

COLEMAN A. YOUNG, MAYOR
CITY OF DETROIT

CITY ENGINEERING DEPARTMENT
CLYDE R. HOPKINS, DIRECTOR

APPROVED

[Signature]
ASSISTANT CITY ENGINEER

[Signature]
DATE

[Signature]
DIRECTOR

3-27-84
DATE

CONTRACT

PW - 6687

MARCH 1984

SCHEDULE OF DRAWINGS

SHEET NO.

ROAD WORK

- R-1 TYPICAL CROSS SECTIONS
- R-2 ALIGNMENT
- R-3 SOUTH APPROACH PLAN - REMOVALS - UTILITIES - CONTOURS
- R-4 NORTH APPROACH REMOVAL - UTILITIES
- R-5 NORTH APPROACH PLAN - CONTOURS
- R-6 PROFILE
- R-7 SOUTH APPROACH DETAILED GRADES
- R-8 NORTH APPROACH DETAILED GRADES
- R-9 WEST JEFFERSON AVE. MEDIAN MODIFICATIONS
- R-10 WEST JEFFERSON ALIGNMENT - (REFERENCE DRAWING)

WATER SYSTEM ALTERATIONS

- W-1 GENERAL NOTES
- W-2 8" WATER LINE RELOCATION
- W-3 MISCELLANEOUS DETAILS

BRIDGE WORK

- 5-1 GENERAL DRAWING
- 5-2 GENERAL PLAN OF SITE
- 5-3 LOG OF SOIL BORINGS
- 5-4 GENERAL PLAN OF STRUCTURE
- 5-5 GENERAL PLAN OF STRUCTURE DETAILS
- 5-6 GENERAL PLAN OF RETAINING WALLS AND DETAILS
- 5-7 EXISTING UTILITIES AND PROPOSED ALTERATIONS
- 5-8 PILES LAYOUT PLAN AND DETAILS
- 5-9 PILE DETAILS
- 5-10 SOUTH ABUTMENT 'A' DETAILS
- 5-11 PIER #1 DETAILS
- 5-12 PIER #2 DETAILS
- 5-13 PIER #3 DETAILS
- 5-14 PIER #4 DETAILS
- 5-15 PIER #5 AND #6 DETAILS
- 5-16 NORTH ABUTMENT 'B' DETAILS
- 5-17 STEEL REINFORCEMENT DETAILS
- 5-18 RETAINING WALL 'A' AND DETAILS
- 5-19 RETAINING WALL 'B' AND DETAILS
- 5-20 RETAINING WALL 'C' AND DETAILS
- 5-21 RETAINING WALL 'D' AND DETAILS
- 5-22 RETAINING WALLS TYP. SECTION - DETAILS A, B, C & D
- 5-23 FASCIA WALL 'E' AND DETAILS
- 5-24 FASCIA WALL 'F' AND DETAILS
- 5-25 STRUCT. STEEL DETS. & GIRDER CAMBER, DEFLECTION AND EL. DIAGRAM - SPAN 1, 2 & 3
- 5-26 STRUCT. STEEL DETS., BM. CAMBER, DEFLECTION AND EL. DIAGRAM - SPAN 4 & 5
- 5-27 STRUCT. STEEL DETS., BM. CAMBER, DEFLECTION AND EL. DIAGRAM - SPAN 6 & 7
- 5-28 STRUCTURAL STEEL DETAILS, ELEVATION - SPAN 1, 2 & 3
- 5-29 STRUCTURAL STEEL DETAILS, ELEVATION - SPAN 4, 5, 6 & 7
- 5-30 STRUCTURAL STEEL DETAILS, BEARING DETAILS
- 5-31 STRUCTURAL STEEL DETAILS, DIAGRAM AND MISCELLANEOUS DETAILS
- 5-32 SUPERSTRUCTURE DETS., TYP. CROSS SECTION, SPAN 1, 2 & 3 AND SPAN 4, 5, 6 & 7
- 5-33 SUPERSTRUCTURE DETAILS, SPAN 1
- 5-34 SUPERSTRUCTURE DETAILS, SPAN 2
- 5-35 SUPERSTRUCTURE DETAILS, SPAN 3
- 5-36 SUPERSTRUCTURE DETAILS, SPAN 4
- 5-37 SUPERSTRUCTURE DETAILS, SPAN 5
- 5-38 SUPERSTRUCTURE DETAILS, SPAN 6
- 5-39 SUPERSTRUCTURE DETAILS, SPAN 7
- 5-40 SUPERSTR. DETS., BOT. OF SLAB, SCREED, TOP OF SLAB FINAL ELS., SPAN 1, 2 & 3
- 5-41 SUPERSTR. DETS., BOT. OF SLAB, SCREED, TOP OF SLAB FINAL ELS., SPAN 4 & 5
- 5-42 SUPERSTR. DETS., BOT. OF SLAB, SCREED, TOP OF SLAB FINAL ELS., SPAN 6 & 7
- 5-43 BRIDGE RAILING STANDARDS
- 5-44 DRAIN CASTING STANDARDS
- 5-45 EXPANSION JOINT DETAILS

ELECTRICAL WORK

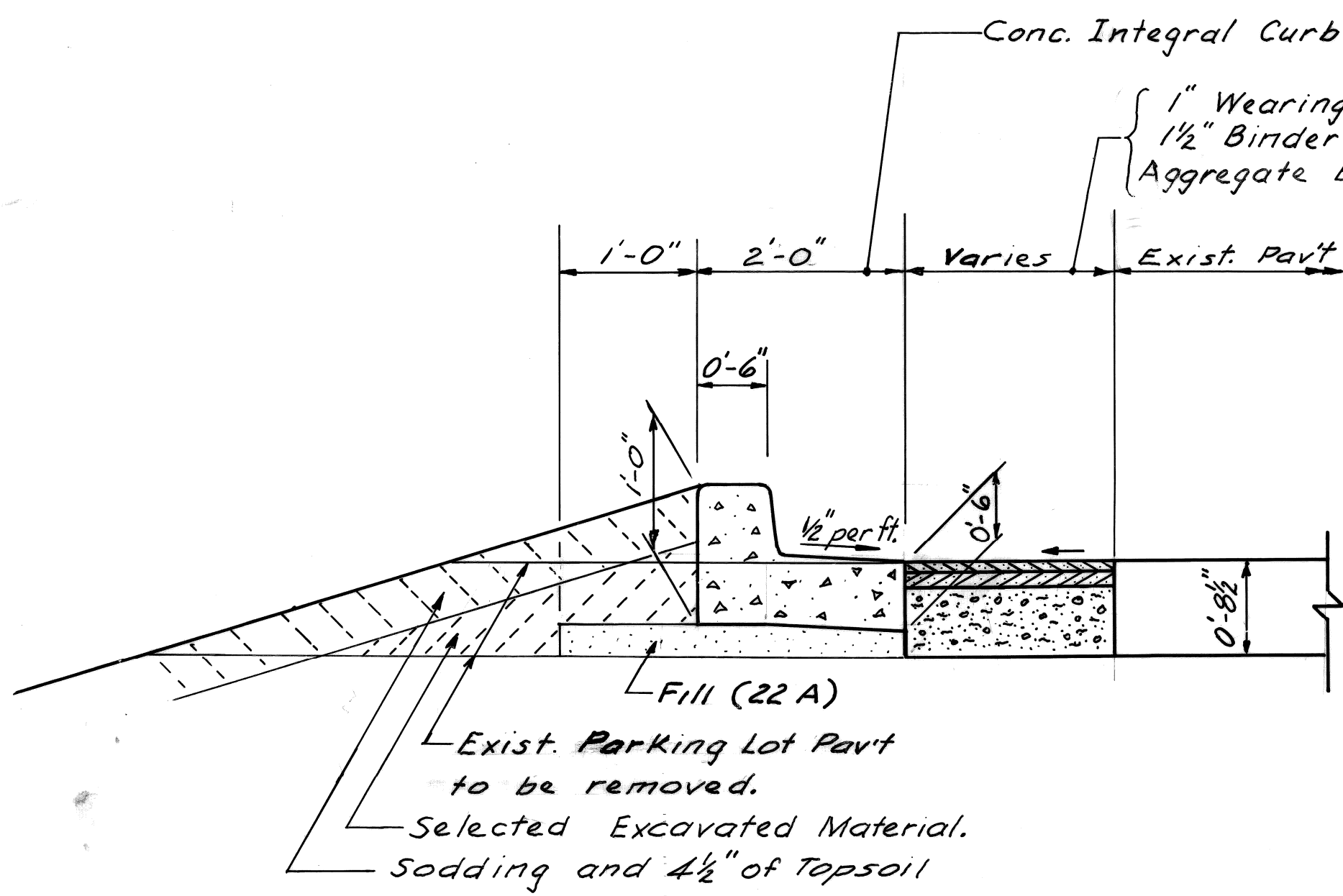
- E-1 LEGEND
- E-2 GENERAL INFORMATION
- E-3 THRU E-5 GENERAL PLAN
- E-6 TRAFFIC SIGNALS AT FORT AND 6TH
- E-7 TRAFFIC SIGNALS AT JEFFERSON - EAST OF CABACIER
- E-8 THRU E-22 TYPICAL DETAILS AND STANDARDS

LAWN SPRINKLER SYSTEM

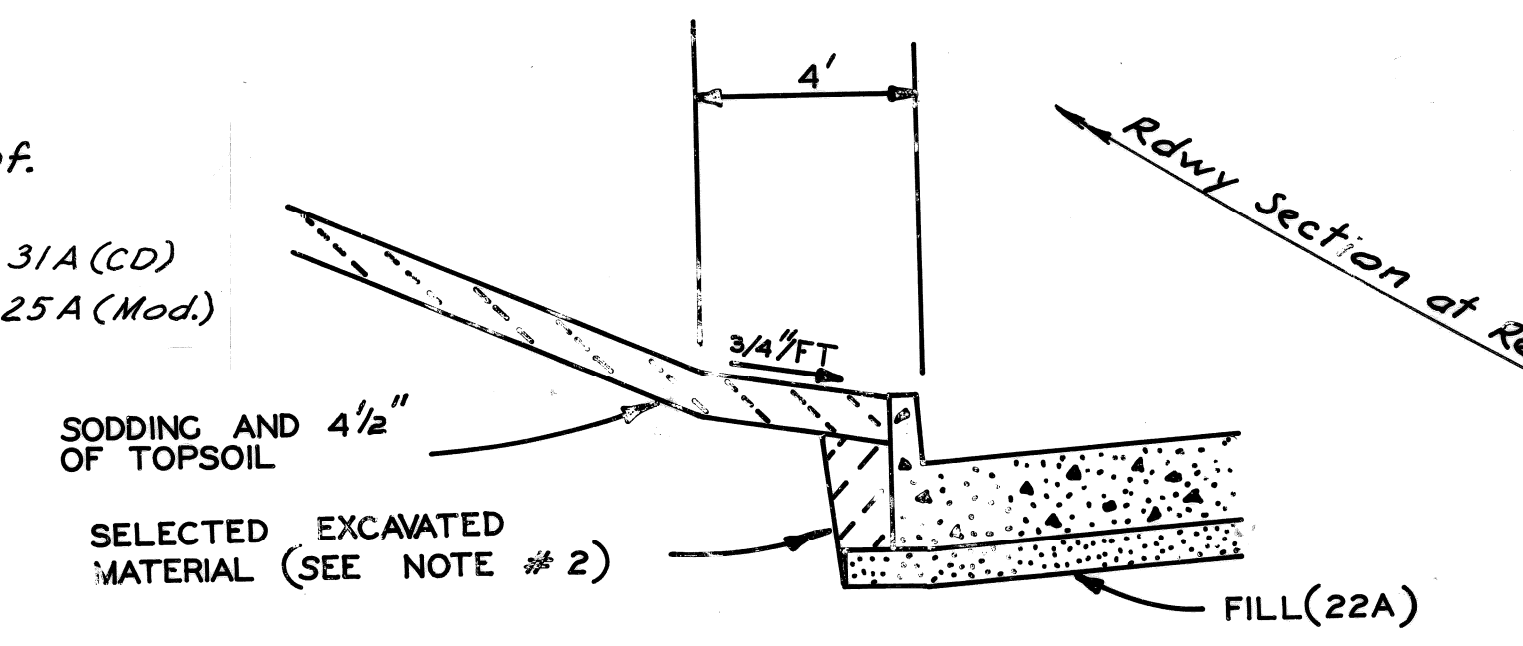
- M-1 IRRIGATION SYSTEM MODIFICATIONS
- M-2 IRRIGATION SYSTEM MODIFICATIONS

QUANTITY SHEETS

- Q-1 QUANTITIES
- Q-2 QUANTITIES

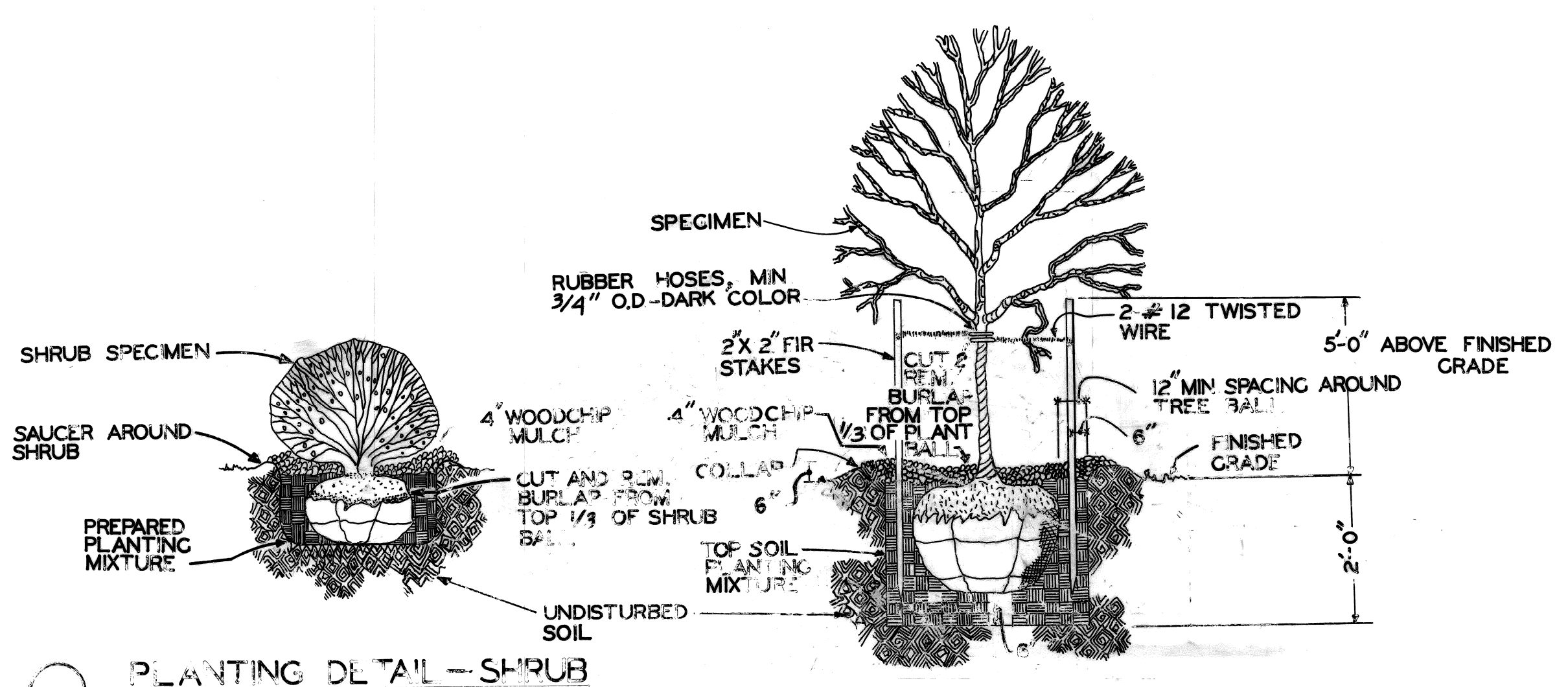


TYPICAL SECTIONS
 PARKING LOT CURB & GUTTER
 PARKING LOT PAVEMENT



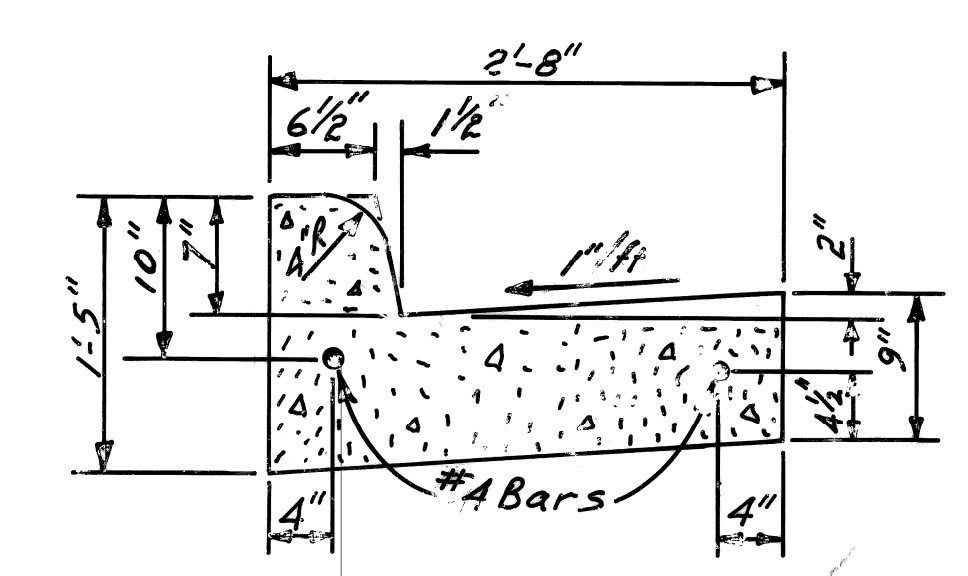
TYPICAL SECTION
 WEST SIDE OF SIXTH
 STA 5+50 TO FORT

TRANSITION DETAIL
 RETAINING WALL TO CURB
 S'BD SIXTH ST., S. OF FORT ST.

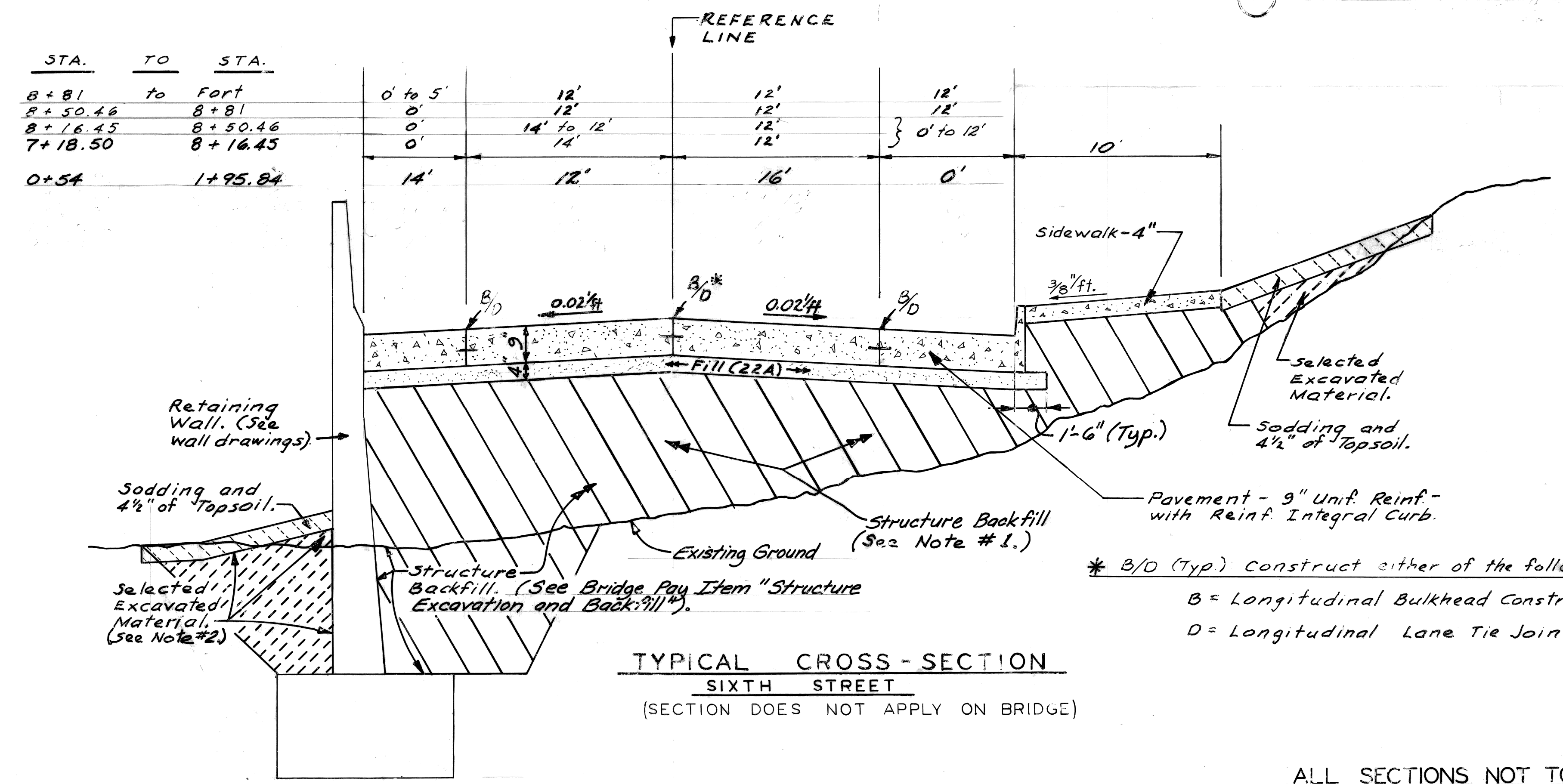


PLANTING DETAIL - SHRUB

PLANTING AND STAKING DETAIL - TREE



INTEGRAL CURB & GUTTER - REINFORCED
 (See Sheet No. B-9, "West Jefferson Avenue
 Median Modifications")



TYPICAL CROSS-SECTION
 SIXTH STREET
 (SECTION DOES NOT APPLY ON BRIDGE)

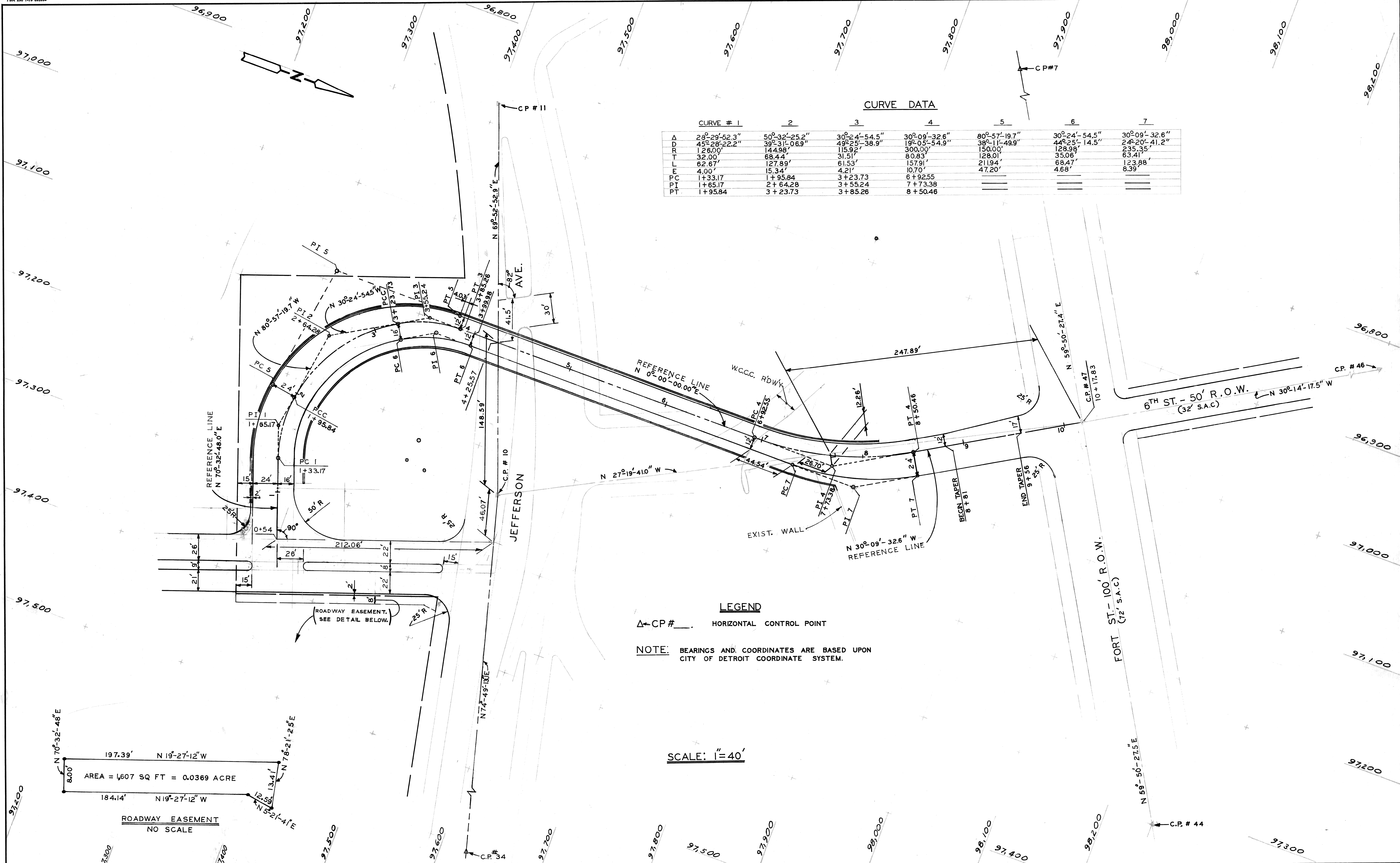
ALL SECTIONS NOT TO SCALE

NOTES:

- Where Sixth St. is between retaining walls (walls on both sides of the pavement), all of the fill between the walls below the 4" of "Fill (22A)" (immediately under the pavement) and below the sidewalk shall be "Structure Backfill", which is billed with the bridge and wall plans. The 4" of "Fill (22A)" is billed with the road plans, as is the pavement and sidewalk.
- This fill shall be "Structure Backfill" if under sidewalk.

* B/D (Typ) Construct either of the following:
 B = Longitudinal Bulkhead Construction Joint.
 D = Longitudinal Lane Tie Joint.

| | | | | | | |
|---|--|--|--|--|---|------------------------------------|
| DESIGNED BY RBP | | APPROVED: <i>Allen E. Pappas</i> ENGINEER OF STREETS HIGHWAY ENGINEER | | CITY OF DETROIT CITY ENGINEERING BUREAUS OF STREETS AND HIGHWAYS | SIXTH STREET BRIDGE OVER JEFFERSON AVE. | SHEET 2 OF 85 SHEETS |
| DRAWN BY RBP | | CHECKED BY WB | | | | CONTR. NO. PW 6687 |
| TRACED BY | | | | TYPICAL CROSS-SECTIONS | | DATE March, 1984 |
| COORD. | | DESCRIPTION | | | | |
| REVISIONS LOCATED BY COORDINATES ON SHEET | | | | | | |

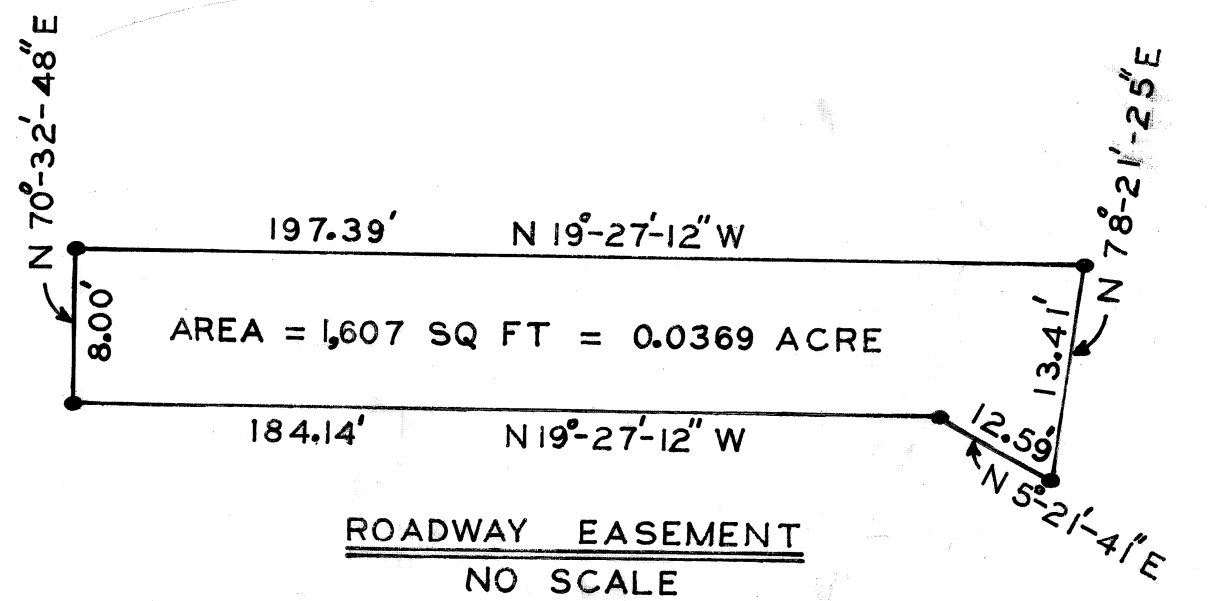


| CURVE DATA | | | | | | | |
|------------|---------------|---------------|---------------|---------------|---------------|---------------|---------------|
| CURVE # | 1 | 2 | 3 | 4 | 5 | 6 | 7 |
| Δ | 28°-29'-52.3" | 50°-32'-25.2" | 30°-24'-54.5" | 30°-09'-32.6" | 80°-57'-19.7" | 30°-24'-54.5" | 30°-09'-32.6" |
| D | 45°-28'-22.2" | 39°-31'-06.9" | 49°-25'-38.9" | 19°-05'-54.9" | 38°-11'-49.9" | 44°-25'-14.5" | 24°-20'-41.2" |
| R | 126.00' | 144.98' | 115.92' | 300.00' | 150.00' | 128.98' | 235.35' |
| T | 32.00' | 68.44' | 31.51' | 80.83' | 128.01' | 35.06' | 63.41' |
| L | 62.67' | 127.89' | 61.53' | 157.91' | 211.94' | 68.47' | 123.88' |
| F | 4.00' | 15.34' | 4.21' | 10.70' | 47.20' | 4.68' | 8.39' |
| PC | 1+33.17 | 1+95.84 | 3+23.73 | 6+92.55 | | | |
| PT | 1+65.17 | 2+64.28 | 3+55.24 | 7+73.38 | | | |
| PI | 1+95.84 | 3+23.73 | 3+85.26 | 8+50.46 | | | |

LEGEND
 Δ CP# _____ HORIZONTAL CONTROL POINT

NOTE: BEARINGS AND COORDINATES ARE BASED UPON CITY OF DETROIT COORDINATE SYSTEM.

SCALE: 1" = 40'



| | | | | | | | | | | | | | |
|---|----|-------------|----|----------|----|-----------|--|------------|----|--|--|--|---|
| <table border="1"> <tr> <td>DESIGNED BY</td> <td>RP</td> </tr> <tr> <td>DRAWN BY</td> <td>RP</td> </tr> <tr> <td>TRACED BY</td> <td></td> </tr> <tr> <td>CHECKED BY</td> <td>WB</td> </tr> </table> | | DESIGNED BY | RP | DRAWN BY | RP | TRACED BY | | CHECKED BY | WB | APPROVED: ENGINEER OF STREETS HIGHWAY ENGINEER | CITY OF DETROIT CITY ENGINEERING BUREAUS OF STREETS AND HIGHWAYS | SIXTH STREET BRIDGE OVER JEFFERSON AVE. ALIGNMENT | SHEET 3 OF 85 SHEETS CONTRACT NO. PW 6687 R-2 DATE March, 1984 |
| DESIGNED BY | RP | | | | | | | | | | | | |
| DRAWN BY | RP | | | | | | | | | | | | |
| TRACED BY | | | | | | | | | | | | | |
| CHECKED BY | WB | | | | | | | | | | | | |