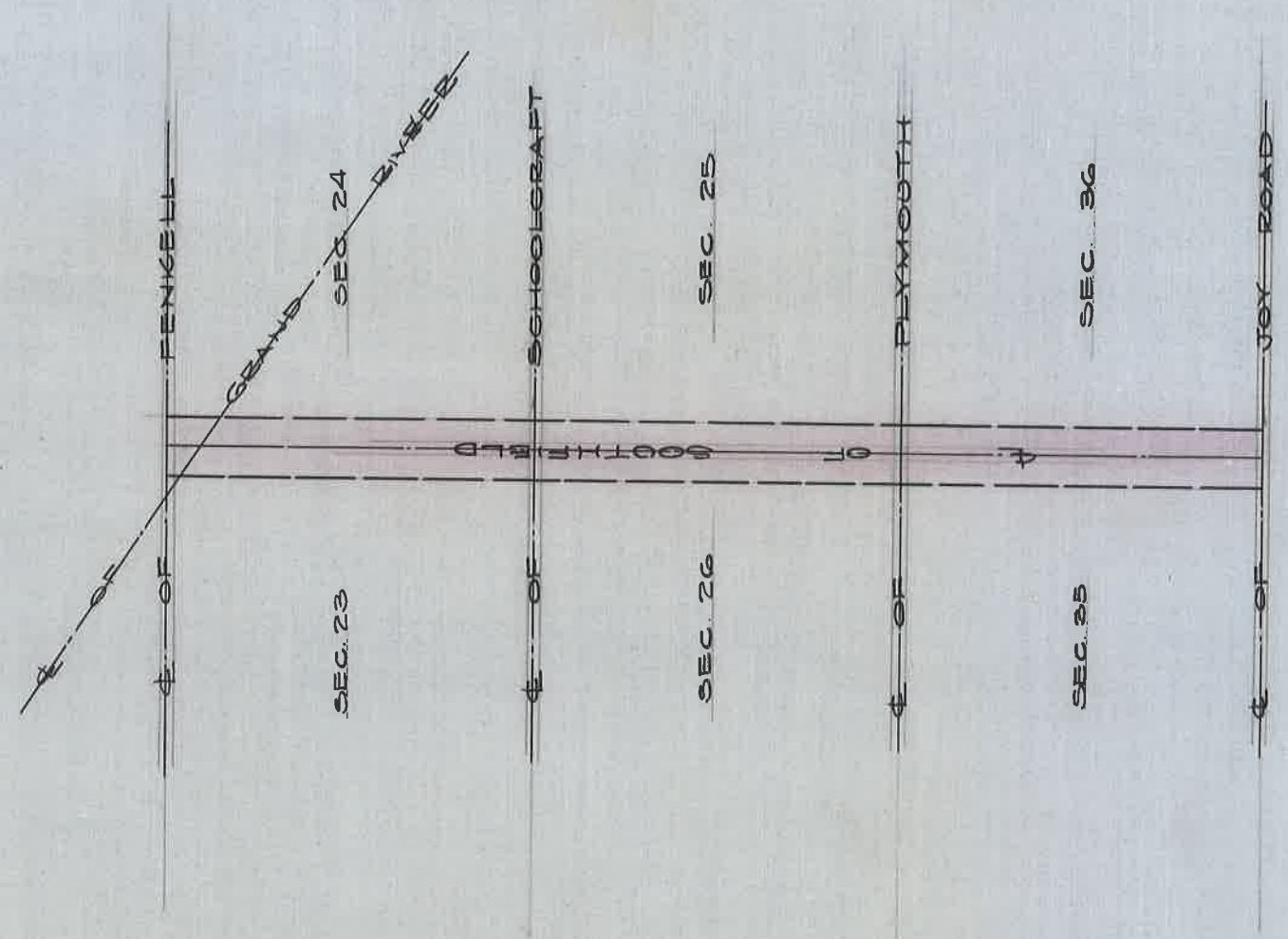


# RECORD OF SOUTHFIELD AVE (RD. 31)

FROM JOY ROAD TO FENKELL AVE  
H. WILLMARTH & H. SEGER BEDFORD TWP. HWY COMMS.  
JULY 5 1884



DEPARTMENT OF PUBLIC WORKS  
 CITY ENGINEER'S OFFICE  
 412 CITY HALL  
 SCALE 1"=NO SCALE  
 G.F.C.