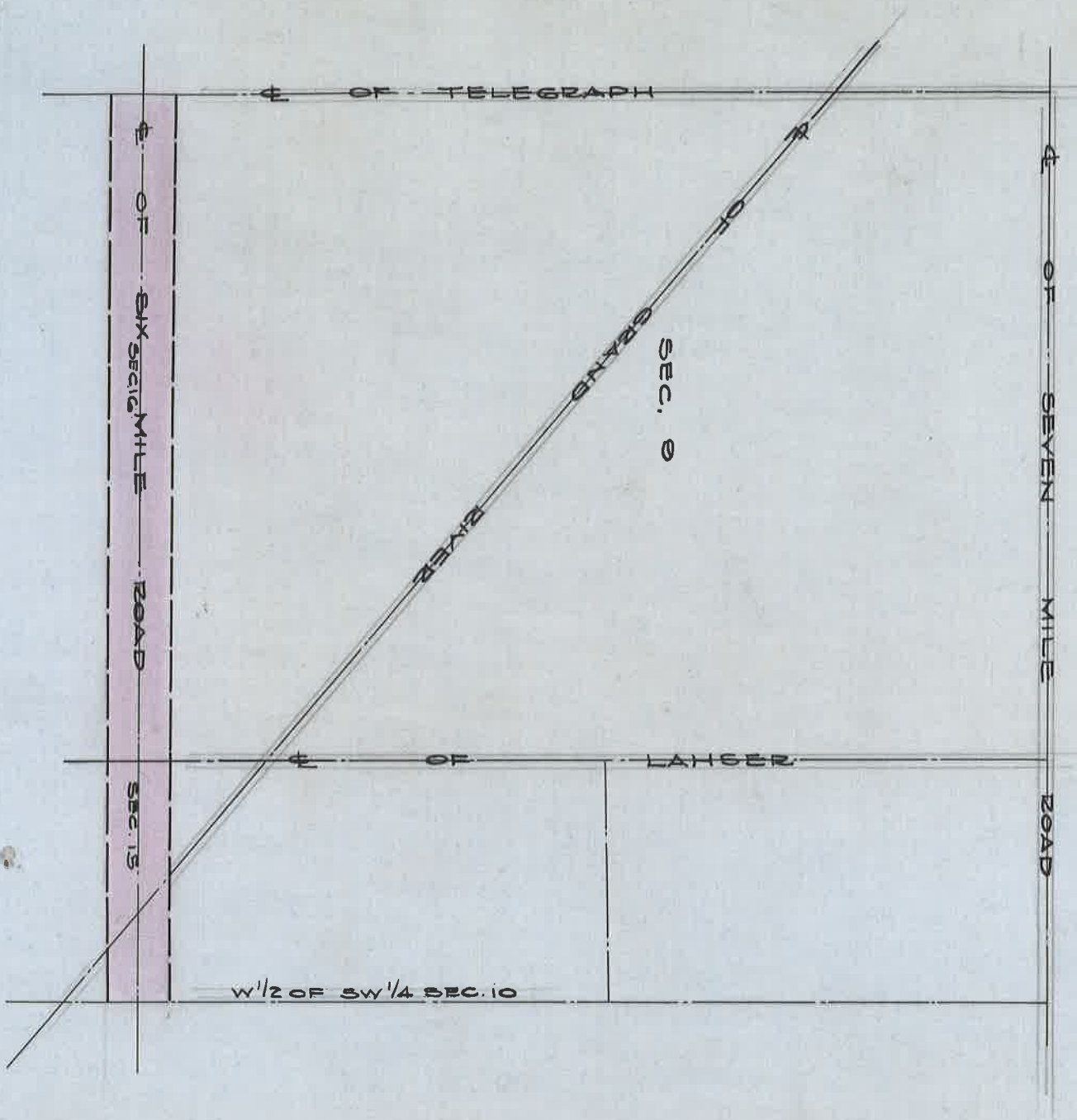


RECORD OF SIX MILE ROAD (RD. 30)

FROM TELEGRAPH AVE TO 1320 FT E. OF LAH SER RD.
H. WILLMARTH & H. SEGER BEDFORD TWP. HWY COMMISS.

JULY 5 1854.



ST. OPG - BK C - PG. 144.
A.P.R.

DEPARTMENT OF PUBLIC WORKS
 CITY ENGINEER'S OFFICE
 412 CITY HALL
 SCALE 1" = 40' SCALE
 G.F.C