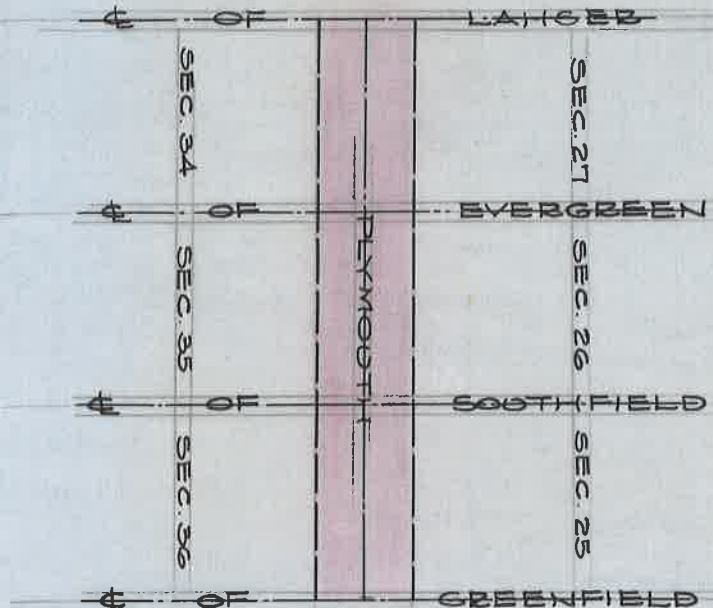


**OPENING OF PLYMOUTH AVE (RDS. 21-29)**

FROM GREENFIELD TO E.L. OF SEC. 28

H. WILLMARTH & DAVID LYON BEDFORD TWP. HWY COMMRS.

APRIL 4, 1835



DEPARTMENT OF PUBLIC WORKS  
 CITY ENGINEER'S OFFICE  
 412 CITY HALL  
 SCALE 1"=NO. SCALE

ST. OFG. B.R.G. - PG. 145.

A.R.P.

G.F.C.