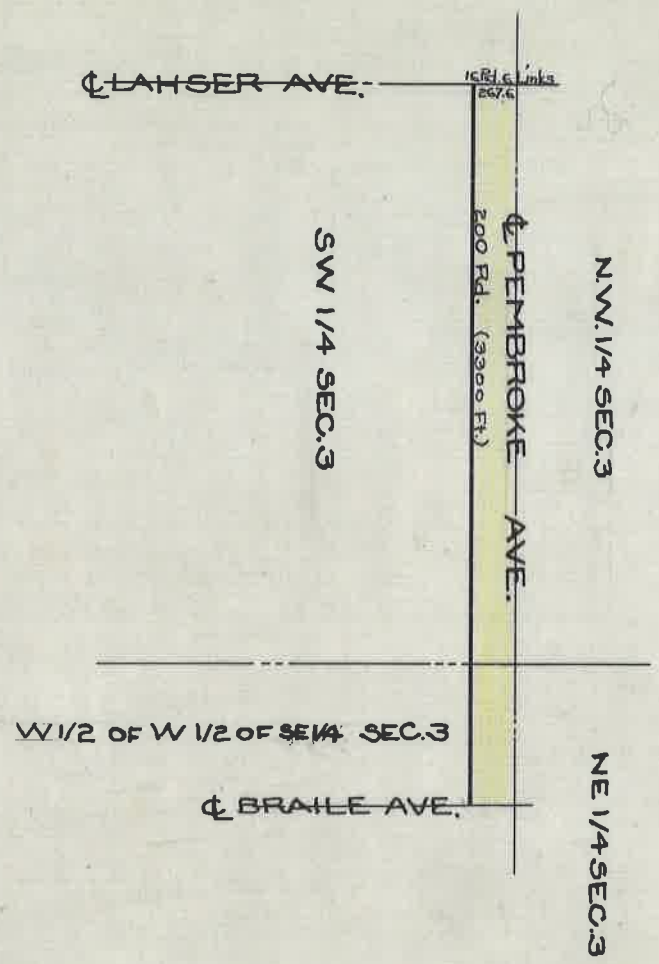


DEDICATION OF A 3300' STRIP OF LAND  
SOUTH OF  $\phi$  PEMBROKE AVE. FROM  $\phi$  LAHSER AVE. TO  $\phi$  BRAILLE AVE.  
RECORDED MAY 29, 1962  
L 94 P 98 DEEDS



ST. OF G. B.K.G. - PG. 142  
A.F.F.

DEPARTMENT OF PUBLIC WORKS  
CITY ENGINEERS OFFICE  
412 CITY HALL  
SCALE 1" = NO SCALE  
4-9-29

A.F.