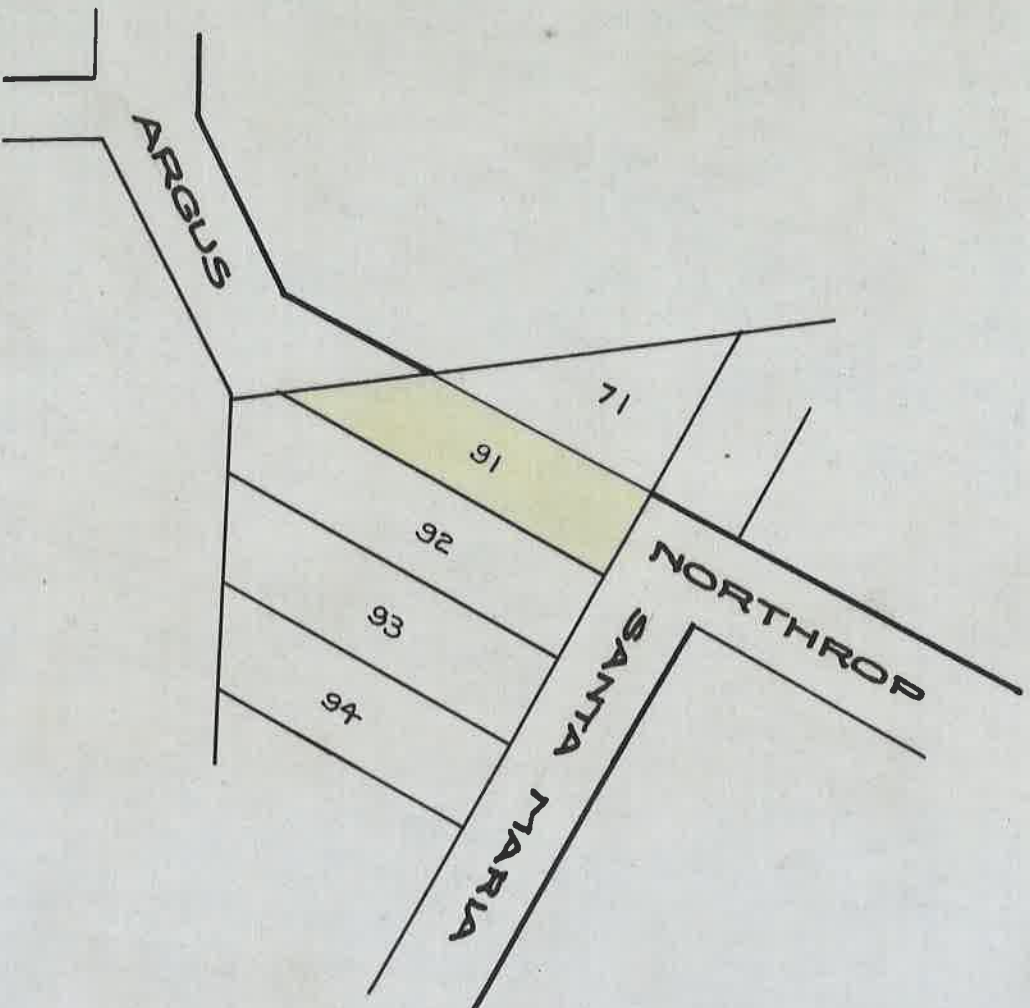


OPENING OF NORTHROP AVE.
FROM SANTA MARIA TO ARGUS AVE.
PURCHASED FROM LEO ASSELIN FOR \$3500 NOV. 5, 1924
PAGES 110, 115, 146 REDFORD VILLAGE BOARD PROC. 1924-5



DEPARTMENT OF PUBLIC WORKS
CITY ENGINEER'S OFFICE
412 CITY HALL

SCALE 1"=100'

3-12-30

A.F.