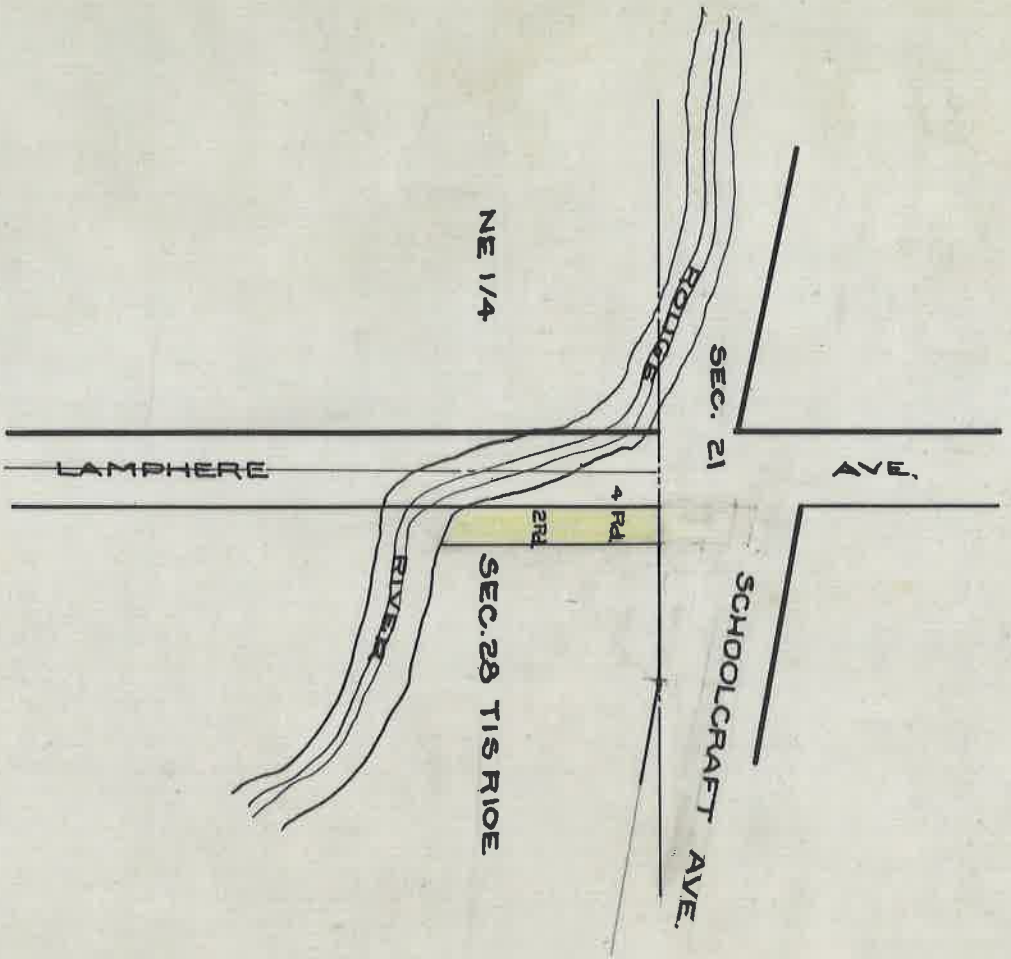


WIDENING OF LAMPHERE AVE.
 FROM SCHOOLCRAFT AVE. TO ROUGE RIVER
 DEEDED BY GUSTAVE HESSE
 L-3326 P 51 Deeds
 AUG. 17, 1901
 REC. Feb 6, 1930



ST. OF G. - BK. G. - PG. 142

A.F.F.

DEPARTMENT OF PUBLIC WORKS
 CITY ENGINEERS' OFFICE
 412 CITY HALL
 SCALE 1" = 40' SCALE
 4-8-29

A.F.